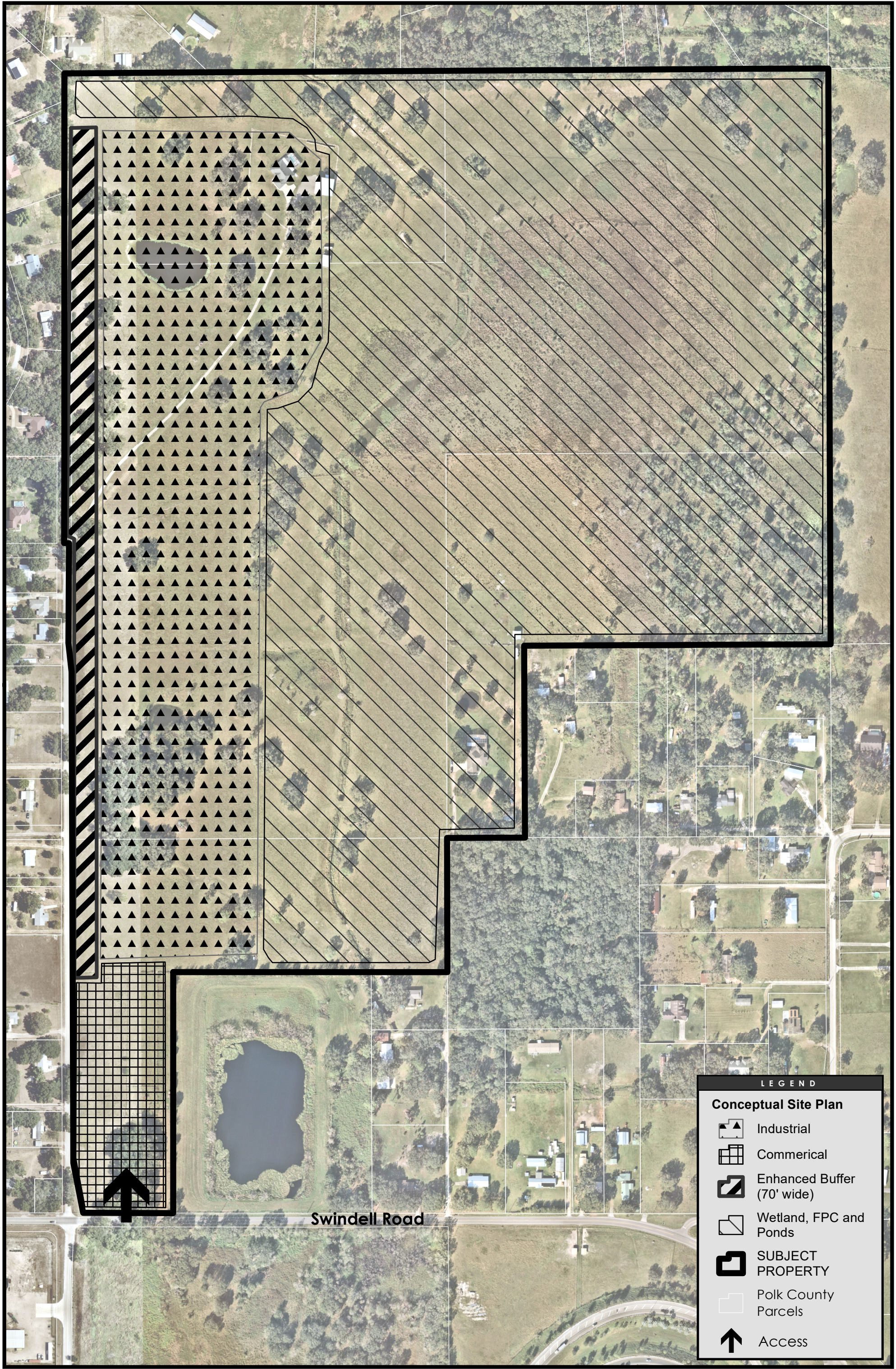









\\us0222-pp1st01\shared\_projects\215617786\_gis\mxd\17786\_MapC\_SitePlan\_20240306.mxd Revised: 202403-06 By: ehlenke



**LEGEND**

**Conceptual Site Plan**

-  Industrial
-  Commercial
-  Enhanced Buffer (70' wide)
-  Wetland, FPC and Ponds
-  **SUBJECT PROPERTY**
-  Polk County Parcels
-  Access

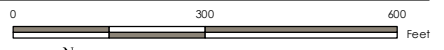
Disclaimer: Stantec assumes no responsibility for data supplied in electronic format. The recipient accepts full responsibility for verifying the accuracy and completeness of the data. The recipient releases Stantec, its officers, employees, consultants and agents, from any and all claims arising in any way from the content or provision of the data.

**Notes:**

1. Coordinate System: NAD 1983 StatePlane Florida West FIPS 9902 Feet
2. Source data: Stantec/Kimley-Horn Personnel; Polk County Parcels
3. Imagery: Nearmap Imagery, Image Date April 23, 2023

**Map C: Site Plan**  
**POLK COUNTY, FLORIDA**  
 March 2024

Stantec Consulting Services Inc.  
 6900 Professional Pkwy E.  
 Sarasota, FL 34240  
 Tel 941.907.6900  
 fax 941.907.6910



Prepared by: E.K.H. 03/06/24  
 Technical Review by: X.X.X MM/DD/YY  
 Independent Review by: X.X.X MM/DD/YY

