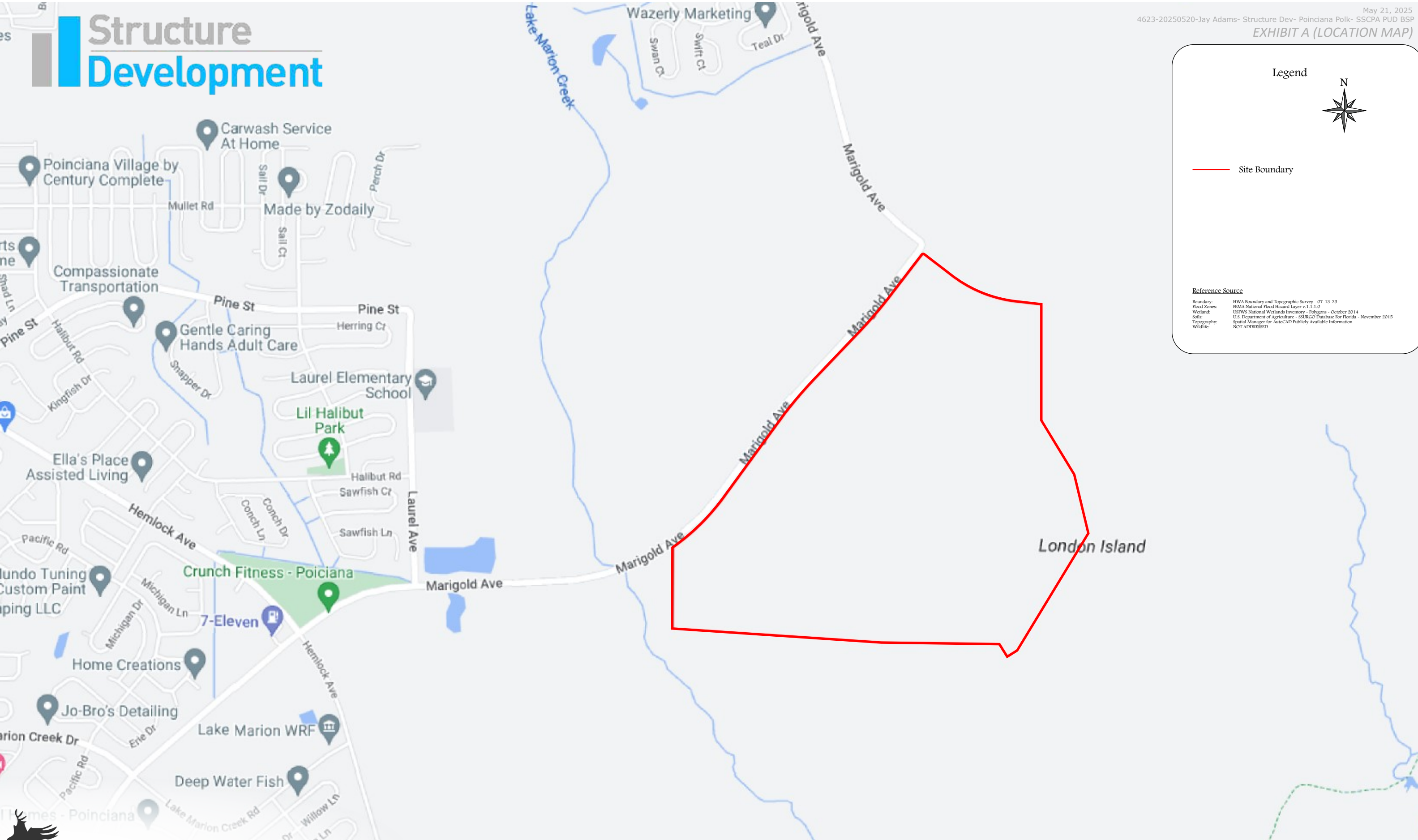


SHEET INDEX	
1	Cover Page
2	Location Map
3	Aerial Photograph
4	Site Plan
5	Open Space Plan
6	Amenity Plan
7-8	Boundary Survey
9	Topographic Map
10	Soils Map
11	FEMA Map
12	Wetlands Map
13	DRI's
14	PUD's
15	Future Land Use
16	Development Area



Structure Development



Legend

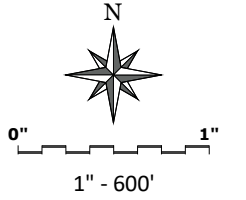


— Site Boundary

Reference Source

Boundary: HWA Boundary and Topographic Survey - 07-13-23
Flood Zones: FEMA National Flood Hazard Layer v.1.1.1.0
Wetland: USFWS National Wetlands Inventory - October 2014
Soils: U.S. Department of Agriculture - SSURGO Database For Florida - November 2015
Topography: Spatial Manager for AutoCAD Publicly Available Information
Width: NOT ADDRESSED

Legend



— Site Boundary

Reference Source

Boundary: HWA Boundary and Topographic Survey - 07-13-23
Flood Zones: FEMA National Flood Hazard Layer v.1.1.1.0
Wetland: USFWS National Wetlands Inventory - October 2014
Soils: U.S. Department of Agriculture - SSURGO Database For Florida - November 2015
Topography: Spatial Manager for AutoCAD Publicly Available Information
Wildlife: NOT ADDRESSED



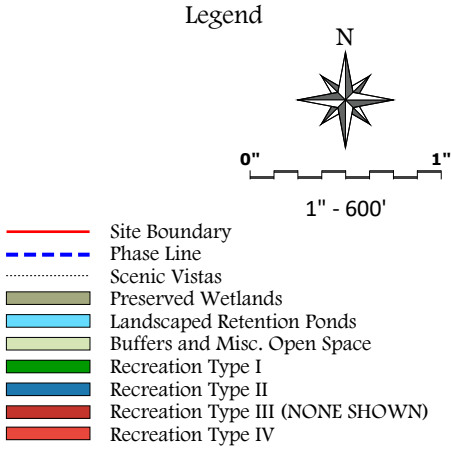
Rj WHIDDEN and
ASSOCIATES, INC.

LAND PLANNERS AND DEVELOPMENT CONSULTANTS
316 Church St. Kissimmee, FL. 34741 - 407 846 1880

This plan is a preliminary concept only and not intended to be an engineered plan. As such it is subject to modification pending environmental, engineering, design, agency review and permit considerations.

These documents and their contents are the property of Rj WHIDDEN and ASSOCIATES, INC. and are issued only for the specific project noted on these drawings. Any reproductions, revisions or modifications of these documents without the expressed written consent of Rj WHIDDEN and ASSOCIATES, INC. is prohibited by law.

Summary		
Description	Value	Unit
Gross Total Area	404.48	ac
Total Preserved Wetlands	139.18	ac
Marigold Ave R/W Dedication	5.65	ac
Net Total Area	259.65	ac
Stormwater Management	47.55	ac
(Calculations Exclusive of Preserved Wetlands)	18.3%	percent
Central Recreation Parcel	4.07	ac
Open Space	84.24	ac
(Inclusive of Recreation Areas & Landscaped Stormwater Ponds)	32.4%	Percent
Phase 1A		
	Value	%
40' x 120' Detached	53	53%
50' x 120' Detached	47	47%
Sub Total	100	du
Phase 1B (1)		
40' x 120' Detached	45	47%
50' x 120' Detached	51	53%
Sub Total	96	du
Phase 1B (2)		
40' x 120' Detached	0	0%
50' x 120' Detached	21	100%
Sub Total	21	du
Phase 2		
40' x 120' Detached	107	50%
50' x 120' Detached	106	50%
Sub Total	213	du
Phase 3		
40' x 120' Detached	68	49%
50' x 120' Detached	71	51%
Sub Total	139	du
Phase 4A		
40' x 120' Detached	114	62%
50' x 120' Detached	71	38%
Sub Total	185	du
Phase 4B		
40' x 120' Detached	100	51%
50' x 120' Detached	95	49%
Sub Total	195	du
All Phases		
40' x 120' Detached	487	51%
50' x 120' Detached	462	49%
Grand Total	949	du
Density	3.65	du/ac
Additional Parking Required (@1 per 7 units)	136	Spaces

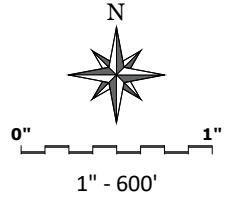


Reference Source

Boundary: HWA Boundary and Topographic Survey - 07-13-23
Flood Zones: FEMA National Flood Hazard Layer v.1.1.1.0
Wetland: USFWS National Wetlands Inventory - Polygons - October 2014
Soils: U.S. Department of Agriculture - SSURGO Database For Florida - November 2015
Topography: Spatial Manager for AutoCAD Publicly Available Information
Wildlife: NOT ADDRESSED



Legend



- Site Boundary
- Phase Line
- Scenic Vistas
- Open Space

Reference Source

Boundary: HWA Boundary and Topographic Survey - 07-13-23
Flood Zones: FEMA National Flood Hazard Layer v.1.1.1.0
Wetland: USFWS National Wetlands Inventory - October 2014
Soils: U.S. Department of Agriculture - SSURGO Database For Florida - November 2015
Topography: Spatial Manager for AutoCAD Publicly Available Information
Wildlife: NOT ADDRESSED

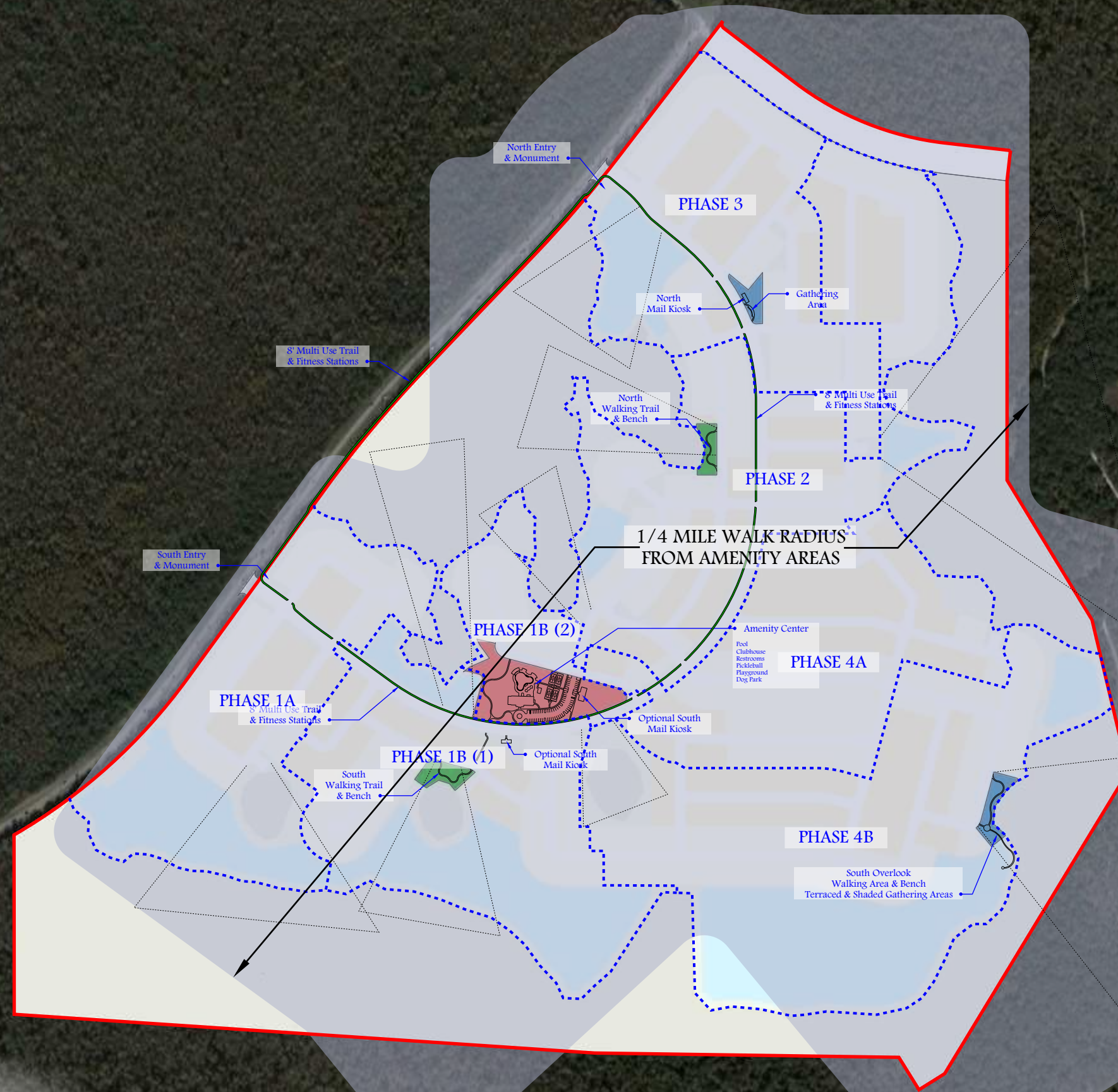


**Rj WHIDDEN and
ASSOCIATES, INC.**

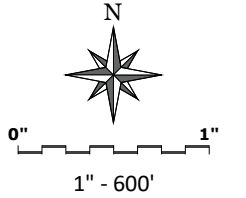
LAND PLANNERS AND DEVELOPMENT CONSULTANTS
316 Church St. Kissimmee, FL. 34741 - 407 846 1880

This plan is a preliminary concept only and not intended to be an engineered plan. As such it is subject to modification pending environmental, engineering, design, agency review and permit considerations.

These documents and their contents are the property of Rj WHIDDEN and ASSOCIATES, INC. and are issued only for the specific project noted on these drawings. Any reproductions, revisions or modifications of these documents without the expressed written consent of Rj WHIDDEN and ASSOCIATES, INC. is prohibited by law.



Legend



- Site Boundary
- Phase Line
- Scenic Vistas
- Recreation Type I
- Recreation Type II
- Recreation Type III (NONE SHOWN)
- Recreation Type IV

Reference Source

Boundary: HWA Boundary and Topographic Survey - 07-13-23
Flood Zones: FEMA National Flood Hazard Layer v.1.1.1.0
Wetland: USFWS National Wetlands Inventory - October 2014
Soils: U.S. Department of Agriculture - SSURGO Database For Florida - November 2015
Topography: Spatial Manager for AutoCAD Publicly Available Information
Wildlife: NOT ADDRESSED



Rj WHIDDEN and
ASSOCIATES, INC.

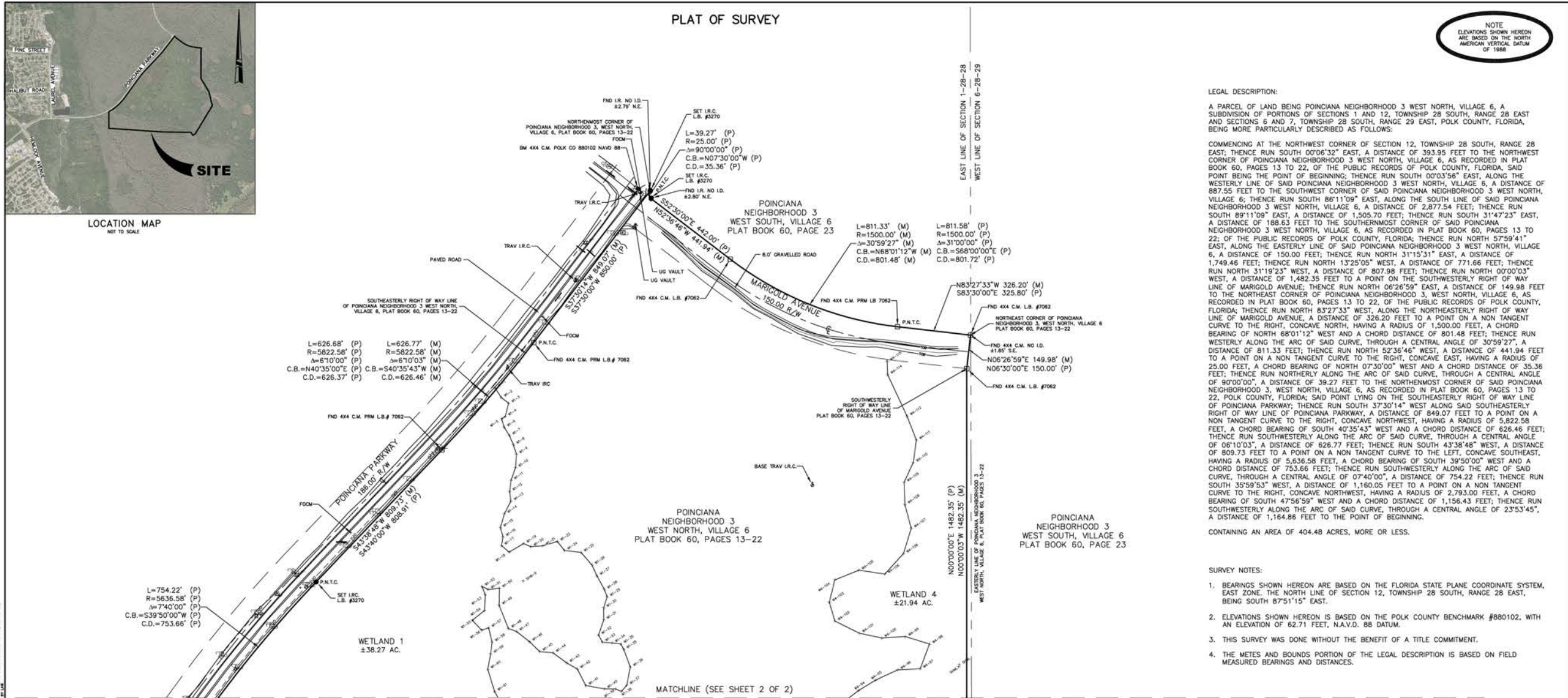
LAND PLANNERS AND DEVELOPMENT CONSULTANTS
316 Church St. Kissimmee, FL. 34741 - 407 846 1880

This plan is a preliminary concept only and not intended to be an engineered plan. As such it is subject to modification pending environmental, engineering, design, agency review and permit considerations.

These documents and their contents are the property of Rj WHIDDEN and ASSOCIATES, INC. and are issued only for the specific project noted on these drawings. Any reproductions, revisions or modifications of these documents without the expressed written consent of Rj WHIDDEN and ASSOCIATES, INC. is prohibited by law.



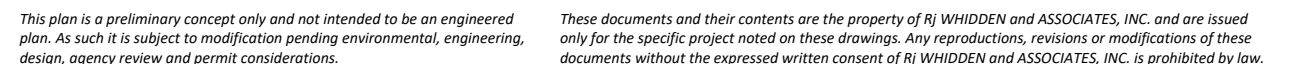
LOCATION MAP
NOT TO SCALE

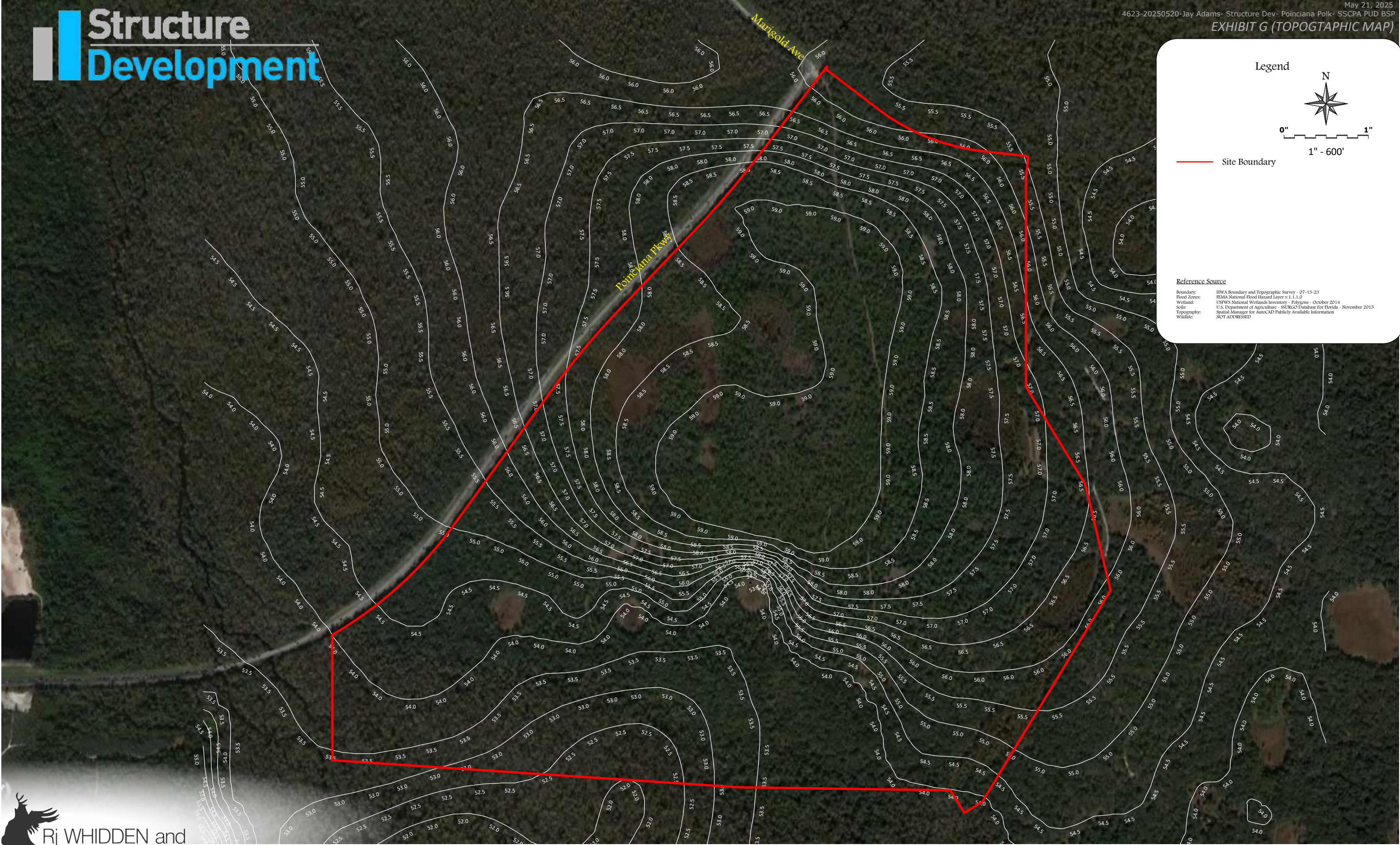


AC = AIR CONDITIONER BFP = BACK FLOW PREVENTER BK = BOOK BLDG. = BUILDING BM = BENCHMARK BDC = BACK OF CURB BOL = BOLLARD BWF = BARS WIRE FENCE BX = BOX C.H. = CHORD BEARING C.D. = CHORD DISTANCE C.B. = CONCRETE BLOCK STRUCTURE C.D. = COMMON ELEMENT C.F. = CHAIN LINK FENCE C.M. = CONCRETE MONUMENT CMP = CORRUGATED METAL PIPE C.O. = CLEAN OUT COM. = COMMUNICATION CONC. = CONCRETE	CLP = CONCRETE LIGHT POLE CPP = CONCRETE POWER POLE CR = CABLE RISER C.S. = CONTROL STRUCTURE D = DRAINAGE DBH = DIAMETER AT BREAST HEIGHT DCO = DRAINAGE CLEAN OUT DIA = DIAMETER DMH = DRAIN MANHOLE E = ELECTRIC EB = ELECTRIC BOX EL = ELEVATION EMH = ELECTRIC MAN HOLE EOP = EDGE OF PAVEMENT EOW = EDGE OF WATER ECP = CURBIL REINFORCED CONC. PIPE ESMT = EASEMENT FDC = FIRE DEPARTMENT CONNECTION F.F.E. = FINISH FLOOR ELEVATION F.M. = FORCED MAIN	FND = FOUND FOC = FACE OF CURB FOCM = FIBER OPTIC CABLE MARKER FOCV = FIBER OPTIC CABLE VAULT G = GAS GA = GUY ANCHOR GM = GAS MARKER GPST = GATE POST GR = GUARD RAIL GW = GUY WIRE GV = GAS VALVE HC = HANDICAP HWA = HANSON, WALTER & ASSOCIATES HWF = HOG WIRE FENCE HYD = FIRE HYDRANT I.C.V. = IRRIGATION CONTROL VALVE ID. = IDENTIFICATION IE = INVERT IP = IRON PIPE IR. = IRON ROD IR.C. = IRON ROD & CAP LENGTH	L.B. = LICENSED SURVEYING BUSINESS L.C.E. = LIMITED COMMON ELEMENT L.S. = LICENSED SURVEYOR MB = MAIL BOX MES. = MITERED END SECTION MTL = METAL MKR = MARKER N.T.S. = NOT TO SCALE N.R. = NON-RADIAL N&D = NAIL AND DISC OE = OVERHEAD ELECTRIC O/S = OFFSET O.R.B. = OFFICIAL RECORD BOOK P.B. = PLAT BOOK P.C. = POINT OF CURVATURE P.O. = PAGE P.I. = POINT OF INTERSECTION P.L.S. = PROFESSIONAL LAND SURVEYOR P.C.C. = POINT OF COMPOUND CURVE P.N.T.C. = POINT OF NON TANGENT CURVE	P.O.B. = POINT OF BEGINNING P.O.C. = POINT OF COMMENCEMENT P.R.C. = POINT OF REVERSE CURVE PR = PHONE RISER PRM = PERMANENT REFERENCE MONUMENT PSM = PROFESSIONAL SURVEYOR & MAPPER P.T. = POINT OF TANGENCY P.V. = POLY VINYL CHLORIDE R = RADIUS RCF = REINFORCED CONCRETE PIPE RCW = RECLAIM WATER RCWV = RECLAIM WATER VALVE RES. = RESIDENCE RGE = RANGE R.L.S. = REGISTERED LAND SURVEYOR RO = ROOF OVERHANG RU = RE-USE LINE RW = RIGHT OF WAY SCD = SEWER CLEAN OUT	SEC = SECTION SS = SANITARY SEWER SV = SEWER VALVE SW = SIDEWALK T = TANGENT LENGTH OF CURVE TBM = TEMPORARY BENCHMARK TOB = TOP OF BANK TOS = TOP OF GRATE TOS = TOE OF SLOPE TRAV = TRAVEL TRAN = TRANSFORMER TWP = TOWNSHIP U = UTILITY UG = UNDERGROUND W = WATER WDF = WOOD FENCE WF = WIRE FENCE WG = WATER GATE WK = WALK W.F. = WETLAND FLAG	WM = WATER METER WPP = WOOD POWER POLE WV = WATER VALVE W = WITH C = CENTERLINE L = DELTA (CENTRAL ANGLE) D = DEED DATA L = LEGAL DATA M = MEASURED DATA P = PLAT DATA PK = PK NAIL CONC. = CONCRETE MONUMENT NAIL & DISC O = IRON PIPE SET 5/8" IRON ROD & CAP L.B. #3270 (UNLESS NOTED OTHERWISE) F = FIRE HYDRANT	OE = BUILDING SETBACK LINE OHW = OVERHEAD ELECTRIC LINE G = GAS LINE W = WATER LINE UTL = UTILITY/POWER POLE GUY = GUY WIRE TELEPHONE BOX ELECTRIC BOX LIGHT POLE CLEANOUT SANITARY SEWER MANHOLE STORM DRAINAGE MANHOLE TREE CABLE BOX VALVE(W/NOTE) PARKING SPACES SIGN
DESIGN DT DRAWN JH CAD# SEE STAMP	TWP 28 S RGE 28 E	DATE BY REVISIONS	8 BROADWAY, SUITE 104, KISSIMMEE, FLORIDA 34741 PHONE (407) 847-9433 FAX (407) 847-2499 ENGINEERING, SURVEYING AND PLANNING Hanson, Walter & Associates, Inc.	PREPARED FOR: POINCIANA RESIDENTIAL DEVELOPMENT	BOUNDARY AND TOPOGRAPHIC SURVEY	SHEET NO. 1 of 2 JOB# 9322	

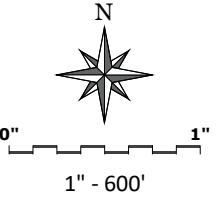
This plan is a preliminary concept only and not intended to be an engineered plan. As such it is subject to modification pending environmental, engineering, design, agency review and permit considerations.

These documents and their contents are the property of RJ WHIDDEN and ASSOCIATES, INC. and are issued only for the specific project noted on these drawings. Any reproductions, revisions or modifications of these documents without the expressed written consent of RJ WHIDDEN and ASSOCIATES, INC. is prohibited by law.





Legend



Site Boundary

Reference Source

Boundary: HWA Boundary and Topographic Survey - 07-13-23
Flood Zones: FEMA National Flood Hazard Layer v.1.1.1.0
Wetland: USFWS National Wetlands Inventory - October 2014
Soil: U.S. Department of Agriculture - SSURGO Database For Florida - November 2015
Topography: Spatial Manager for AutoCAD Publicly Available Information
Width: NOT ADDRESSED



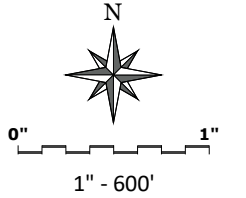
Rj WHIDDEN and
ASSOCIATES, INC.

LAND PLANNERS AND DEVELOPMENT CONSULTANTS
316 Church St. Kissimmee, FL. 34741 - 407 846 1880

This plan is a preliminary concept only and not intended to be an engineered plan. As such it is subject to modification pending environmental, engineering, design, agency review and permit considerations.

These documents and their contents are the property of Rj WHIDDEN and ASSOCIATES, INC. and are issued only for the specific project noted on these drawings. Any reproductions, revisions or modifications of these documents without the expressed written consent of Rj WHIDDEN and ASSOCIATES, INC. is prohibited by law.

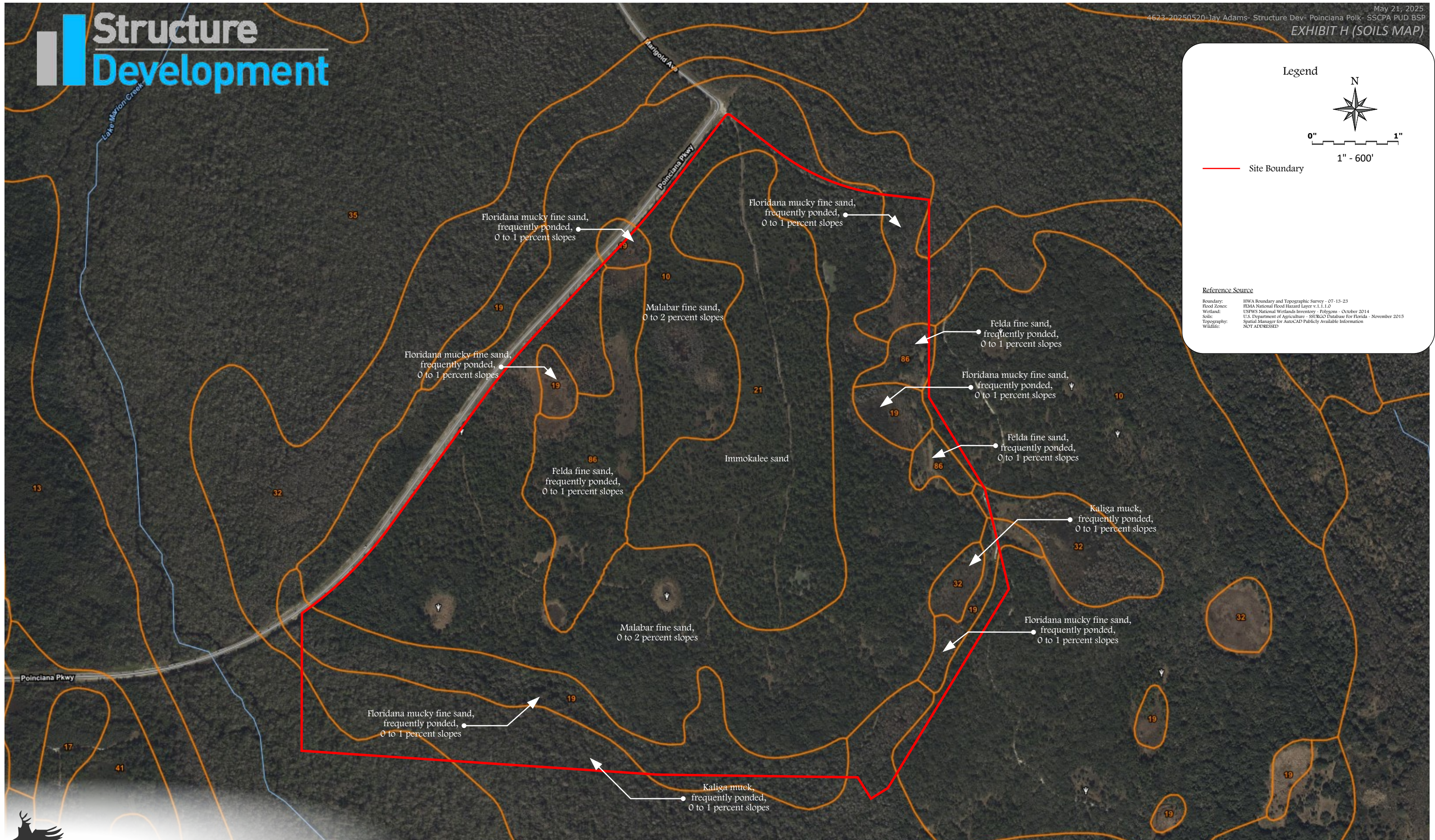
Legend

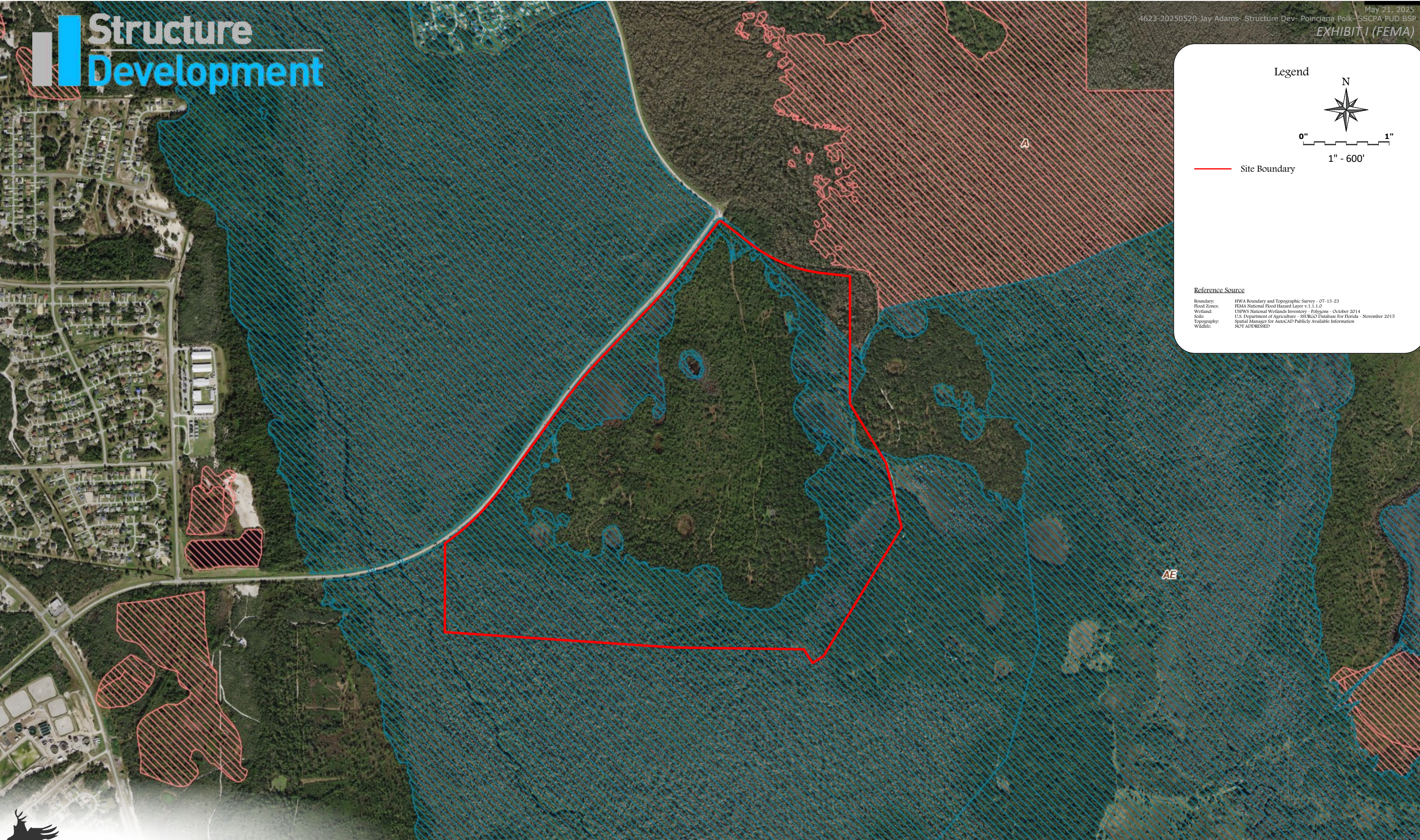


Site Boundary

Reference Source

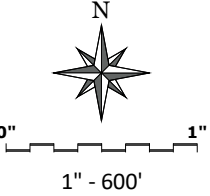
Boundary: HWA Boundary and Topographic Survey - 07-13-23
Flood Zones: FEMA National Flood Hazard Layer v.1.1.1.0
Wetland: USFWS National Wetlands Inventory - Polygon - October 2014
Soil: U.S. Department of Agriculture - SSURGO Database For Florida - November 2015
Topography: Spatial Manager for AutoCAD Publicly Available Information
Wildlife: NOT ADDRESSED





Structure Development

Legend

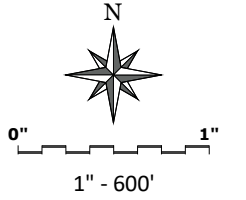


— Site Boundary

Reference Source

Boundary: HWA Boundary and Topographic Survey - 07-13-23
Flood Zones: FEMA National Flood Hazard Layer v.1.1.1.0
Wetland: USFWS National Wetlands Inventory - October 2014
Soil: U.S. Department of Agriculture - SSURGO Database For Florida - November 2015
Topography: Spatial Manager for AutoCAD Publicly Available Information
Wildlife: NOT ADDRESSED

Legend



— Site Boundary

Reference Source

Boundary: HWA Boundary and Topographic Survey - 07-13-23
Flood Zones: FEMA National Flood Hazard Layer v.1.1.1.0
Wetland: USFWS National Wetlands Inventory - October 2014
Soils: U.S. Department of Agriculture - SSURGO Database For Florida - November 2015
Topography: Spatial Manager for AutoCAD Publicly Available Information
Wildlife: NOT ADDRESSED



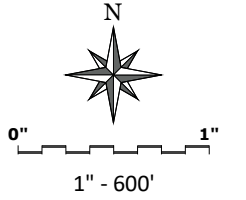
**Rj WHIDDEN and
ASSOCIATES, INC.**

LAND PLANNERS AND DEVELOPMENT CONSULTANTS
316 Church St. Kissimmee, FL. 34741 - 407 846 1880

This plan is a preliminary concept only and not intended to be an engineered plan. As such it is subject to modification pending environmental, engineering, design, agency review and permit considerations.

These documents and their contents are the property of Rj WHIDDEN and ASSOCIATES, INC. and are issued only for the specific project noted on these drawings. Any reproductions, revisions or modifications of these documents without the expressed written consent of Rj WHIDDEN and ASSOCIATES, INC. is prohibited by law.

Legend



Site Boundary

Reference Source

Boundary: HWA Boundary and Topographic Survey - 07-13-23
Flood Zones: FEMA National Flood Hazard Layer v.1.1.1.0
Wetland: USFWS National Wetlands Inventory - October 2014
Soils: U.S. Department of Agriculture - SSURGO Database For Florida - November 2015
Topography: Spatial Manager for AutoCAD Publicly Available Information
Wildlife: NOT ADDRESSED

Pre DRI #
1Poinciana

Pre DRI # 1Poinciana
OBJECTID 147
DRI_NAME Pre DRI # 1Poinciana
TYPE MP-PreDRI
DRI_NUMBER P1
Shape.STArea0 1036688915.156302
Shape.STLength0 361870.443670



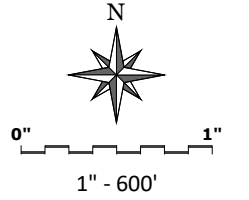
Rj WHIDDEN and
ASSOCIATES, INC.

LAND PLANNERS AND DEVELOPMENT CONSULTANTS
316 Church St. Kissimmee, FL. 34741 - 407 846 1880

This plan is a preliminary concept only and not intended to be an engineered plan. As such it is subject to modification pending environmental, engineering, design, agency review and permit considerations.

These documents and their contents are the property of Rj WHIDDEN and ASSOCIATES, INC. and are issued only for the specific project noted on these drawings. Any reproductions, revisions or modifications of these documents without the expressed written consent of Rj WHIDDEN and ASSOCIATES, INC. is prohibited by law.

Legend



Site Boundary

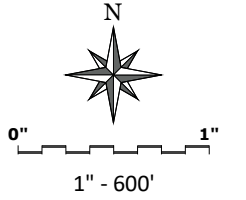
POINCIANA
OBJECTID 1231
NAME POINCIANA
STATUS VAR PHASES FINAL
NUM 10
STR T27-R28, T28-R28, T28-R29
DESC NEW PUD (98-12) INC. 7200 DU on 3900 AC and GOLF COURSE
YEAR 71
ACRES 19503.380559
PUDNAME PUD 71-10
Shape.STArea0 849437474.527072
Shape.STLength0 328505.155829

PUD 71-10

Reference Source

Boundary: HWA Boundary and Topographic Survey - 07-13-23
Flood Zones: FEMA National Flood Hazard Layer v.1.1.1.0
Wetland: USFWS National Wetlands Inventory - Polygons - October 2014
Soils: U.S. Department of Agriculture - SSURGO Database For Florida - November 2015
Topography: Spatial Manager for AutoCAD Publicly Available Information
Wildlife: NOT ADDRESSED

Legend



Site Boundary

Reference Source

Boundary: HWA Boundary and Topographic Survey - 07-13-23
Flood Zones: FEMA National Flood Hazard Layer v.1.1.1.0
Wetland: USFWS National Wetlands Inventory - October 2014
Soils: U.S. Department of Agriculture - SSURGO Database For Florida - November 2015
Topography: Spatial Manager for AutoCAD Publicly Available Information
Wildlife: NOT ADDRESSED

DRI
OBJECTID 1130
DEV_AREA RDA
FLUPAR_ID 100.000000
FLUNAME DRI
CITY_NAME
LAKES
SAP_NAME
DEV_AREA_DESC Rural Development Area
CPA_NUMBER
CPADATE 0
Acres 4151.887662
SPA_NAME
FLU_X
FLU_CP DRI
FLU_LDC DRI
Shape.STArea0 180855503.115703
Shape.STLength0 144146.325351



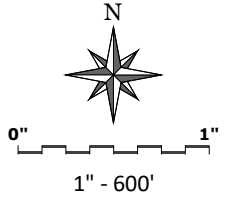
Rj WHIDDEN and
ASSOCIATES, INC.

LAND PLANNERS AND DEVELOPMENT CONSULTANTS
316 Church St. Kissimmee, FL. 34741 - 407 846 1880

This plan is a preliminary concept only and not intended to be an engineered plan. As such it is subject to modification pending environmental, engineering, design, agency review and permit considerations.

These documents and their contents are the property of Rj WHIDDEN and ASSOCIATES, INC. and are issued only for the specific project noted on these drawings. Any reproductions, revisions or modifications of these documents without the expressed written consent of Rj WHIDDEN and ASSOCIATES, INC. is prohibited by law.

Legend



Site Boundary

Reference Source

Boundary: HWA Boundary and Topographic Survey - 07-13-23
Flood Zones: FEMA National Flood Hazard Layer v.1.1.1.0
Wetland: USFWS National Wetlands Inventory - Polygons - October 2014
Soils: U.S. Department of Agriculture - SSURGO Database For Florida - November 2015
Topography: Spatial Manager for AutoCAD Publicly Available Information
Wildlife: NOT ADDRESSED

UEA

RDA
OBJECTID 9090
DEV_AREA RDA
DEV_AREA_DESC Rural Development Area
Acres 891490
Shape.STArea() 38833312711.995410
Shape.STLength() 4902119.752156

RDA



Rj WHIDDEN and
ASSOCIATES, INC.

LAND PLANNERS AND DEVELOPMENT CONSULTANTS
316 Church St. Kissimmee, FL. 34741 - 407 846 1880

This plan is a preliminary concept only and not intended to be an engineered plan. As such it is subject to modification pending environmental, engineering, design, agency review and permit considerations.

These documents and their contents are the property of Rj WHIDDEN and ASSOCIATES, INC. and are issued only for the specific project noted on these drawings. Any reproductions, revisions or modifications of these documents without the expressed written consent of Rj WHIDDEN and ASSOCIATES, INC. is prohibited by law.