

RESOLUTION NO.: \_\_\_\_\_

**WHEREAS**, the Board of County Commissioners, by adopting Resolution 2025-125, dated October 7, 2025, attached hereto as Exhibit "A", caused Bomber Road, a County-maintained Urban Collector road, to be posted 45 M.P.H., and

**WHEREAS**, the Polk County Roads & Drainage Division has since conducted speed studies for Bomber Road (Road Number 951406); from US Highway 17 to County Road 655 (Rifle Range Road). Located in S-14, T-29S, R-25E., and

**WHEREAS** said studies were made in accordance with the procedures established by the State of Florida Department of Transportation, and it was subsequently determined that postings of 35 M.P.H. and 45 M.P.H. are reasonable, and

**WHEREAS** under the laws of the State of Florida, the Board of County Commissioners is vested with the authority to establish speed limits on County maintained roads,

**NOW, THEREFORE, BE IT RESOLVED** that the Polk County Roads & Drainage Division is herewith directed to cause Bomber Road to be posted 35 M.P.H. from US Highway 17 to Ben Durance Road and 45 M.P.H. from Ben Durance Road to County Road 655 (Rifle Range Road). Further, Resolution 2025-125, dated October 7, 2025, attached hereto as Exhibit "A", is hereby repealed.

Adopted in Regular Session duly assembled this 16<sup>th</sup> day of June 2026.

Attest:  
Stacy M. Butterfield, Clerk

Board of County Commissioners  
Polk County, Florida

By: \_\_\_\_\_  
Deputy Clerk

By: \_\_\_\_\_  
Martha Santiago, Ed.D., Chair

RESOLUTION NO.: 2025-125

**WHEREAS**, the Board of County Commissioners, by adopting a Resolution dated March 24, 1987, attached hereto as Exhibit "A", caused Bomber Road, a County-maintained Urban Collector road, to be posted 45 M.P.H., and

**WHEREAS**, the Polk County Roads & Drainage Division has since conducted speed studies for Bomber Road (Road Number 951406); from US Highway 17 to County Road 655 (Rifle Range Road). Located in S-14, T-29S, R-25E., and

**WHEREAS** said studies were made in accordance with the procedures established by the State of Florida Department of Transportation, and it was subsequently determined that a posting of 45 M.P.H. is reasonable, and

**WHEREAS** under the laws of the State of Florida, the Board of County Commissioners is vested with the authority to establish speed limits on County maintained roads,

**NOW, THEREFORE, BE IT RESOLVED** that the Polk County Roads & Drainage Division is herewith directed to cause Bomber Road to be posted 45 M.P.H. from US Highway 17 to County Road 655 (Rifle Range Road). Further, that Resolution dated March 24, 1987, attached hereto as Exhibit "A", is hereby repealed.

DATED this 7<sup>th</sup> day of October 2025.



951406

RESOLUTION

WHEREAS the Polk County Engineer, through the Polk County Traffic Engineering Department, has made a speed study on CR 559, from US 17 to CR 655, which is located in Section 14, Township 29 South, Range 25 East, and

WHEREAS said study was made in accordance with procedures established by the State of Florida Department of Transportation, and

WHEREAS under the laws of the State of Florida, the Board of County Commissioners is vested with the authority to establish speed limits on County Maintained roads,

NOW, THEREFORE, BE IT RESOLVED that the County Engineer be and is herewith directed to cause said CR 559, from US 17 to CR 655, which is located in Section 14, Township 29 South, Range 25 East to be posted as follows:

- MP 0.00 to MP 0.50      45 M.P.H.
- MP 0.50 to MP 2.30      55 M.P.H.
- MP 2.30 to MP 3.30      45 M.P.H.

STATE OF FLORIDA  
COUNTY OF POLK

I, E. D. "BUD" DIXON, Clerk of the Board of County Commissioners of Polk County, Florida, hereby certify that the foregoing is a true and correct copy of a resolution adopted by the said Board in the *24<sup>th</sup>* day of *March*, 1987.

WITNESS my hand and official seal of said Board this *30<sup>th</sup>* day of *March*, 1987.

E. D. "BUD" DIXON, Clerk

(SEAL)

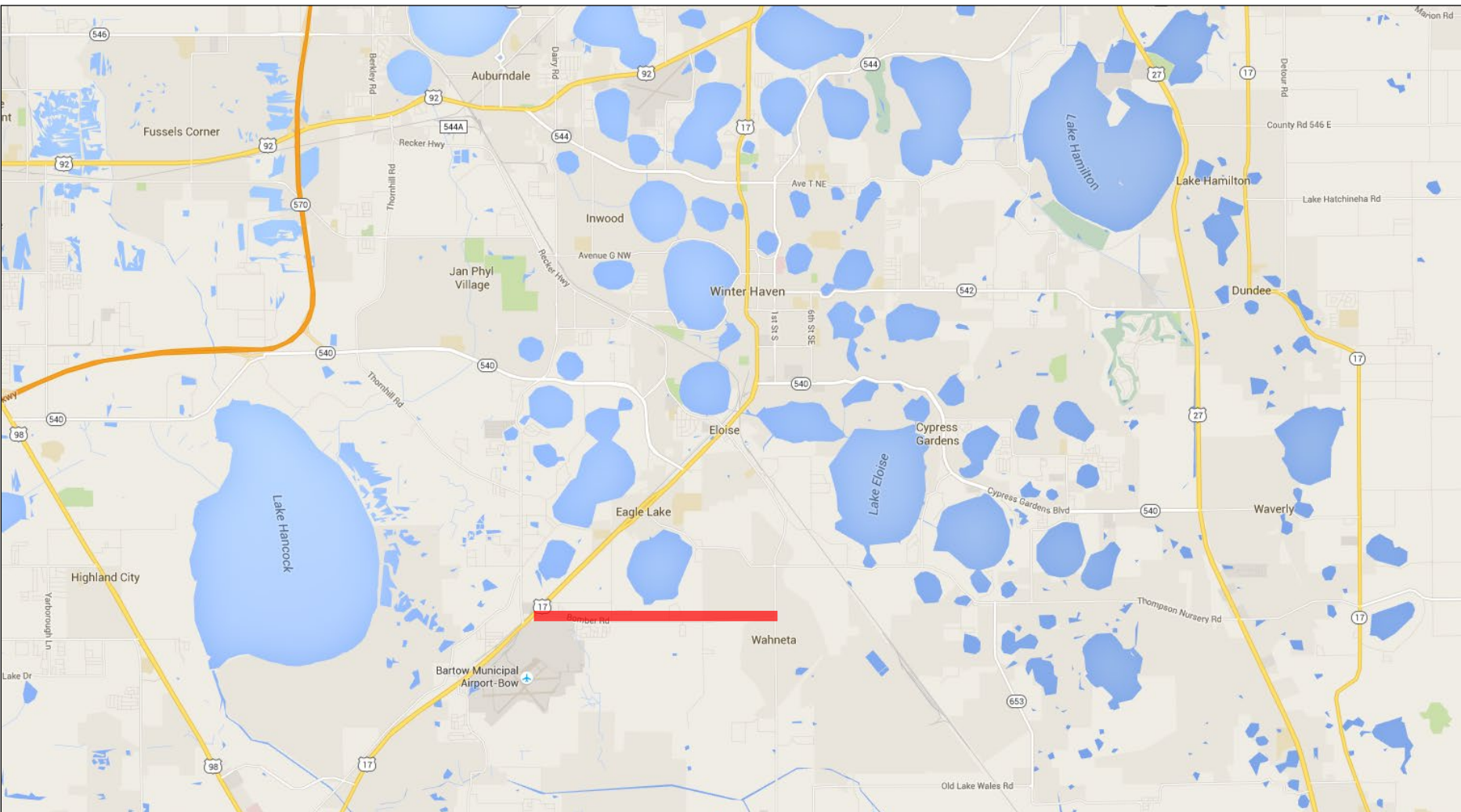
BY: *[Signature]*  
Deputy Clerk

03/24/87/dkn



# Bomber Rd (Winter Haven Area)

Request for Speed Limit Reduction





# Bomber Rd (Winter Haven Area)

Request for Speed Limit Reduction





**POLK COUNTY TRANSPORTATION DIVISION  
SPEED STUDY**

**ROAD DESCRIPTION**

|                            |           |                         |      |                                  |        |
|----------------------------|-----------|-------------------------|------|----------------------------------|--------|
| <b>Road Name</b>           | Bomber Rd |                         |      | <b>Road Number</b>               | 951406 |
| <b>Section</b>             | 14        | <b>Township</b>         | 29 S | <b>Range</b>                     | 25 E   |
| <b>Commission District</b> | 3         | <b>Maintenance Unit</b> | R3   | <b>Functional Classification</b> | UC     |
| <b>From</b>                | US 17     | <b>Node</b>             | N/A  | <b>Mile Post</b>                 | 0.00   |
| <b>To</b>                  | CR 655    | <b>Node</b>             | N/A  | <b>Mile Post</b>                 | 3.3    |

**REASON FOR RESOLUTION**

|   |        |                         |   |                         |   |
|---|--------|-------------------------|---|-------------------------|---|
| <b>Customer Service Request #</b>   | 100208 | <b>Internal Request</b> |   | <b>External Request</b> | ✓ |
| <b>New Posting</b>  |        | <b>Speed Adjustment</b> | ✓ |                         |   |
| <b>External Agency Name (If Applicable)</b>   |        |                         |   |                         |   |
| <b>Problem Statement:</b><br>Polk County received a citizen request to reduce the speed limit along the western portion of Bomber Rd. |        |                         |   |                         |   |

**TEST RUN SPEEDS**

|                                    |      |                  |                 |
|------------------------------------|------|------------------|-----------------|
| <b>Test Run Speed #1 in M.P.H.</b> | None | <b>Comments:</b> | 85th Percentile |
| <b>Test Run Speed #2 in M.P.H.</b> | None | <b>Comments:</b> | 85th Percentile |
| <b>Test Run Speed #3 in M.P.H.</b> | None | <b>Comments:</b> | 85th Percentile |

**ROADWAY ALIGNMENT**

|                                |      |  |          |                            |      |
|--------------------------------|------|--|----------|----------------------------|------|
| <b>Number of Hills</b>         | 5    | <b>Number of Curves</b>                | 4        | <b>Number of Turns</b>     | 1    |
| <b>Lane Width (ft)</b>         | 12"  | <b>Number of Lanes</b>                 | 2        | <b>Shoulder Width (ft)</b> | 0    |
| <b>Number of School Zones</b>  | None | <b>Posted Speed of School Zones</b>    | None     | <b>Pavement Condition</b>  | Good |
| <b>Number of Intersections</b> | 21   | <b>Sight Distance of Intersections</b> | Adequate |                            |      |
| <b>Number of Driveways</b>     | 37   | <b>Sight Distance of Driveways</b>     | Adequate |                            |      |
| <b>Number of Stop Signs</b>    | 0    | <b>Number of Signals</b>               | 2        |                            |      |

**SPEED LIMIT INFORMATION**

|  |       |       |  |  |  |
|--|-------|-------|--|--|--|
| <b>Current Speed Limit Posting (M.P.H.)</b>  | 45    | 45    |  |  |  |
| <b>Proposed Speed Limit Posting (M.P.H.)</b> | 35    | 45    |  |  |  |
| <b>From Mile Post</b>                        | 0.000 | 0.550 |  |  |  |
| <b>To Mile Post</b>                          | 0.550 | 3.300 |  |  |  |

**Notes:**  
Data was collected in one location along the requested segment. The 85th percentile speed was 35 mph. The proposed posting reflects the 85th percentile speed.

|   |                            |             |           |
|---|----------------------------|-------------|-----------|
| <b>Review conducted by</b>                      | Holly Toley & Andrew Jones | <b>Date</b> | 3/27/2026 |
| <b>Entered by</b>                               | Steve Logan                | <b>Date</b> | 5/27/2026 |
| <b>Concurred/authorized by Traffic Engineer</b> | Amy J. Gregory, P.E.       | <b>Date</b> | 05/27/26  |
| <b>Signature</b>                                |                            |             |           |