

RESOLUTION NO.: _____

WHEREAS, the Polk County Roads & Drainage Division, conducted parking studies on the following County-maintained Local Residential road:

Victoria Lane (Road Number 882801); from Golf Aire Boulevard to Dead End North, Located in S-28, T-28S, R-28E, and

WHEREAS, said studies were made in accordance with the procedures established by the State of Florida Department of Transportation, and said studies verified that the parking of vehicles in this location creates navigability concerns, and

WHEREAS, under the laws of the State of Florida, the Board of County Commissioners is vested with the authority to restrict parking on County maintained roads.

NOW, THEREFORE, BE IT RESOLVED that the Polk County Roads & Drainage Division is herewith directed to cause Victoria Lane to be posted “No Parking, Stopping or Standing” on the east side from 150 feet north of Golf Aire Boulevard to 180 feet north of Golf Aire Boulevard.

DATED this 3rd day of September 2024.

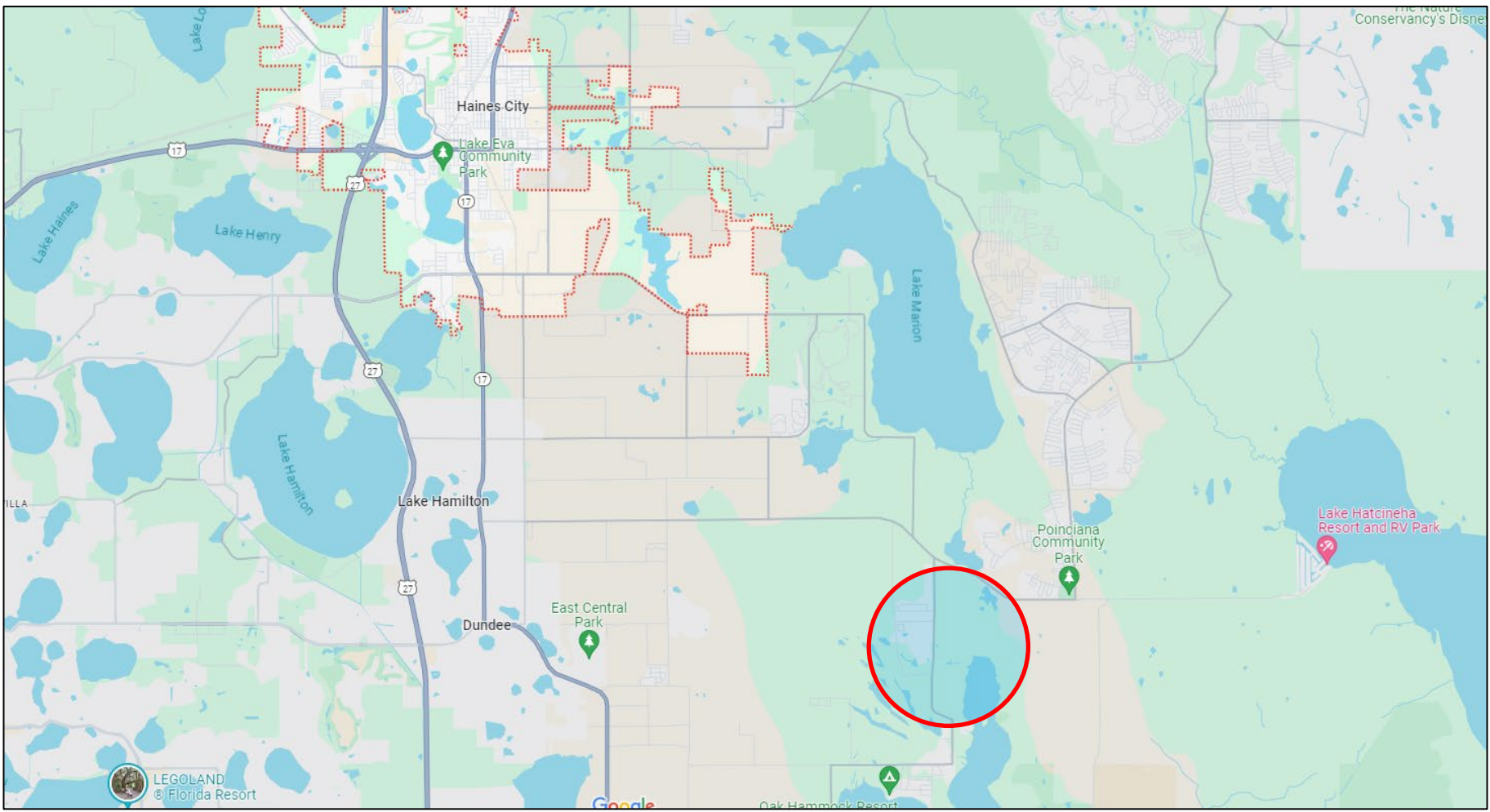


N.T.S.

Victoria Ln (Haines City Area)

Request for Parking Restrictions

Vicinity Map



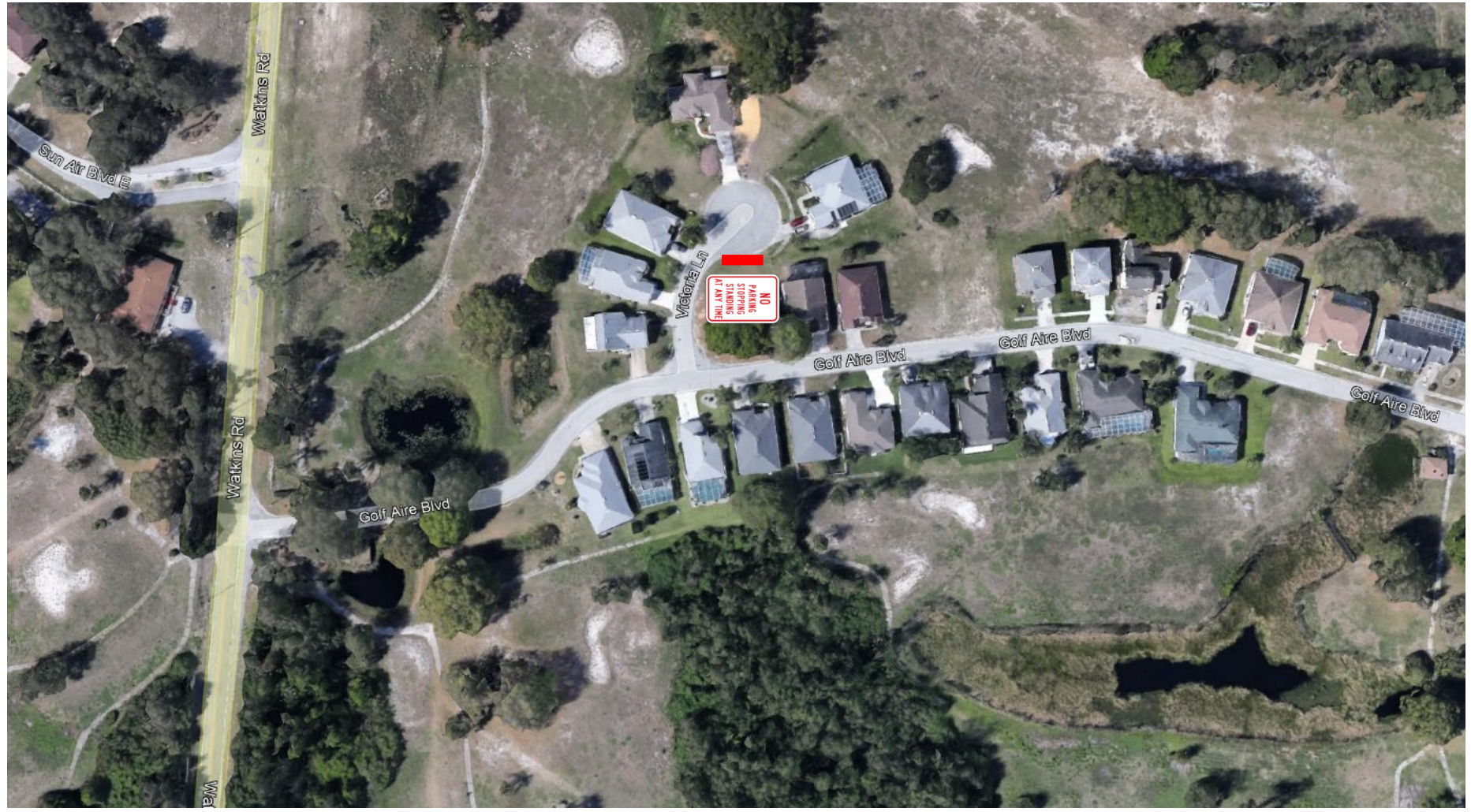
N



N.T.S.

Victoria Ln (Haines City Area)

Request for Parking Restrictions





**POLK COUNTY ROADS & DRAINAGE DIVISION
NO PARKING, STOPPING OR STANDING REQUEST**

ROAD DESCRIPTION

Name	Victoria Ln			Number	882801
Section	28	Township	28 S	Range	28 E
Commission District	4	Maintenance Unit	R4	Functional Classification	LR
From	Golf Aire Blvd	Node	N/A	Mile Post	N/A
To	Dead End North	Node	N/A	Mile Post	N/A

REASON FOR RESOLUTION

Customer Service Request #	N/A	Internal Request		External Request	✓
-----------------------------------	-----	-------------------------	--	-------------------------	---

External Agency Name (if Applicable)

Problem Statement:
Area residents request parking restriction due to navigability issues being caused by the parking of vehicles.

REQUEST FOR POSTING

No Parking	✓	No Stopping	✓	No Standing	✓
-------------------	---	--------------------	---	--------------------	---

Direction of road	North-South	Findings: Roads & Drainage has verified that the parking of vehicles in this area creates potential navigability concerns. Recommend signs be posted restricting parking on the east side of the street from 150' north Golf Aire Blvd to 180' N of Golf Aire Blvd.
Which side of road	East	
Distance in feet	30	

PICTURES OF LOCATION



Review conducted by Steve Logan **Date** 8/16/2024

Entered by Steve Logan **Date** 8/16/2024

Concurred/authorized by Traffic Manager Amy J. Gregory, P.E. **Date**

Signature  