

GENERAL INFORMATION

APPLICANT AND OPERATOR

The Quikrete Companies
5 Concourse Parkway
Suite 1900
Atlanta, GA 30328

ACREAGE

PROPERTY AREA +/-436 acres
PERMIT AREA +/-436 acres
PROJECT AREA +/-436 acres

FLOOD HAZARD 0 ac.
WETLANDS 0 ac.

MINING SCHEDULE

START 2026
COMPLETION 2080
RECLAMATION START 2035
ANNUAL ACREAGE TO BE MINED 5-20

*ALL MINING SHALL BE RECLAIMED IN ACCORDANCE
WITH STATE REGULATIONS, CHAPTER 62C OF THE
FLORIDA ADMINISTRATIVE CODE.

HOURS OF OPERATION
MONDAY THROUGH SATURDAY
4 A.M. TO 5 P.M.

GENERAL:

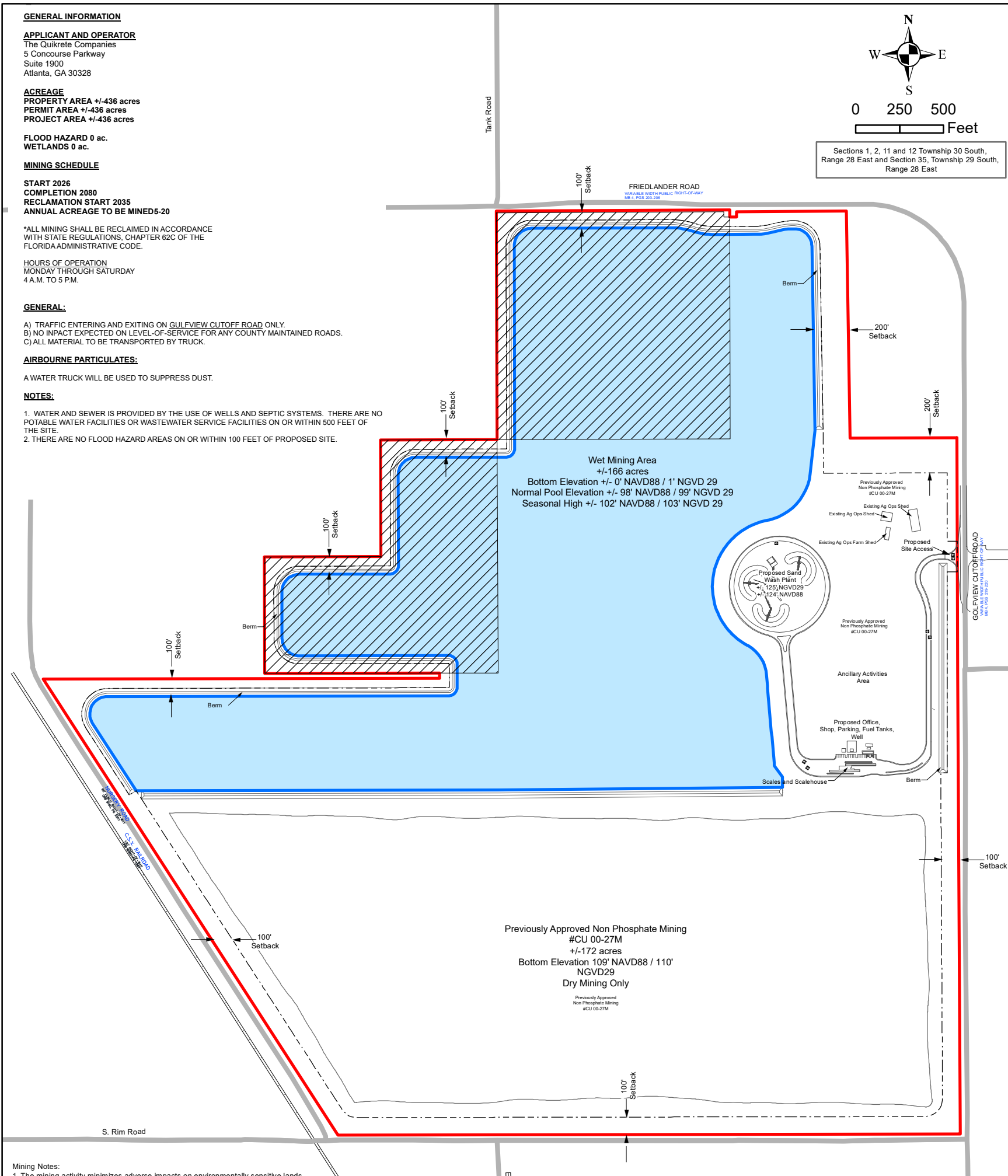
- A) TRAFFIC ENTERING AND EXITING ON GULFVIEW CUTOFF ROAD ONLY.
B) NO IMPACT EXPECTED ON LEVEL-OF-SERVICE FOR ANY COUNTY MAINTAINED ROADS.
C) ALL MATERIAL TO BE TRANSPORTED BY TRUCK.

AIRBOURNE PARTICULATES:

A WATER TRUCK WILL BE USED TO SUPPRESS DUST.

NOTES:

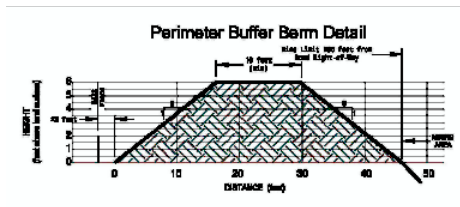
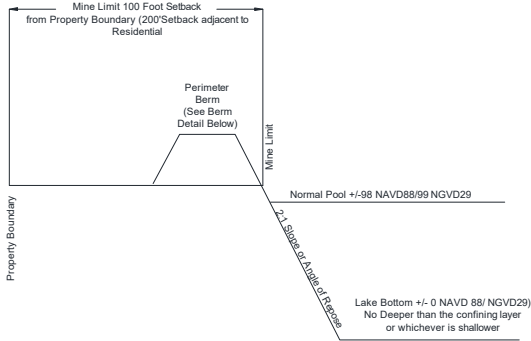
1. WATER AND SEWER IS PROVIDED BY THE USE OF WELLS AND SEPTIC SYSTEMS. THERE ARE NO
POTABLE WATER FACILITIES OR WASTEWATER SERVICE FACILITIES ON OR WITHIN 500 FEET OF
THE SITE.
2. THERE ARE NO FLOOD HAZARD AREAS ON OR WITHIN 100 FEET OF PROPOSED SITE.



Mining Notes:

1. The mining activity minimizes adverse impacts on environmentally sensitive lands.
2. The mining plan minimizes the adverse impacts of truck and heavy machinery traffic on residential streets.
3. Silt fence will be installed around the outside limits of any earthmoving activities in order prevent sediment from leaving the site and to decrease the velocity of sheet flows.
4. After removal and stockpiling of vegetative cover, topsoil, the sand will be pumped to the processing plant by a dredge to be washed, sorted and conveyed into stockpiles various desired product size ranges.
5. Stormwater runoff will be directed internally on the site and not allowed to discharge off-site.
6. The facility will maintain a Best Management Practices (BMP) Plan and a Spill Prevention Control and Countermeasures (SPCC) Plan to prevent discharge of pollutants.
7. Any material track-out at the ingress/egress will be monitored any material deposited removed by use of a street sweeper, wet broom, or by manually sweeping up any track out material.
8. Off-site sales and trucking operations will occur between 5:00 am and 6:00 pm, Monday through Saturday.
9. Mining and processing of materials, including maintenance, will occur 24 hours per day.
10. The annual rate of mining is estimated to be +/- 5 to 20 acres per year.
11. Traffic from this mine will only access the property at the point of direct ingress And egress on Golfview Cutoff Road.
12. The site has been designed in accordance with and in consideration of the post mining uses allowed within the Future Land Use designation.
13. There will be no dams, spillways and related structures on the proposed extension area.

- Setback Line
--- Mine Limit for Wet Mining
--- Extension Areas (+/- 70 acres)
--- Property Boundary (+/-436 acres)



THE COLINAS GROUP, INC.
Engineering and Enviromental Consultants

2031 E. Edgewood Drive Suite 5
Lakeland, Florida 33803
863-669-9141
www.thecolinasgroup.com

Drawn By:
M.Mouncey

Date:
11/14/2025

Figure 9 Conceptual Mine Plan
Highland Sand Extension

Polk County, Florida

QUIKRETE
What America's Made Of®
CONSTRUCTION MATERIALS
5 Concourse Parkway
Suite 1900
Atlanta, GA 30328 |
www.quikrete.com