

Section 11, Township 28 South, Range 23 East

POLK COUNTY ROADS AND DRAINAGE DIVISION / SURVEYING AND MAPPING SECTION

MAINTAINED RIGHT-OF-WAY MAP FOR
SARATOGA AVENUE
POLK COUNTY, FLORIDA

CERTIFICATE

I hereby certify that the maintained right-of-way as shown on this map has been:
 _____ Maintained or repaired for four or more years by Polk County maintenance
 forces, _____ road having been constructed by Polk County; or
 _____ Maintained or repaired for seven or more years by Polk County maintenance
 forces.

Area Maintenance Manager _____
(Print)

Area Maintenance Manager _____
(Signature)

It is certified that the lands depicted upon this map lying between the lines marked "maintained right-of-way" are vested in Polk County, Florida, pursuant to the provisions of Section 95.361, Florida Statutes, by virtue of said road having been constructed and/or maintained by Polk County as required by Section 95.361.

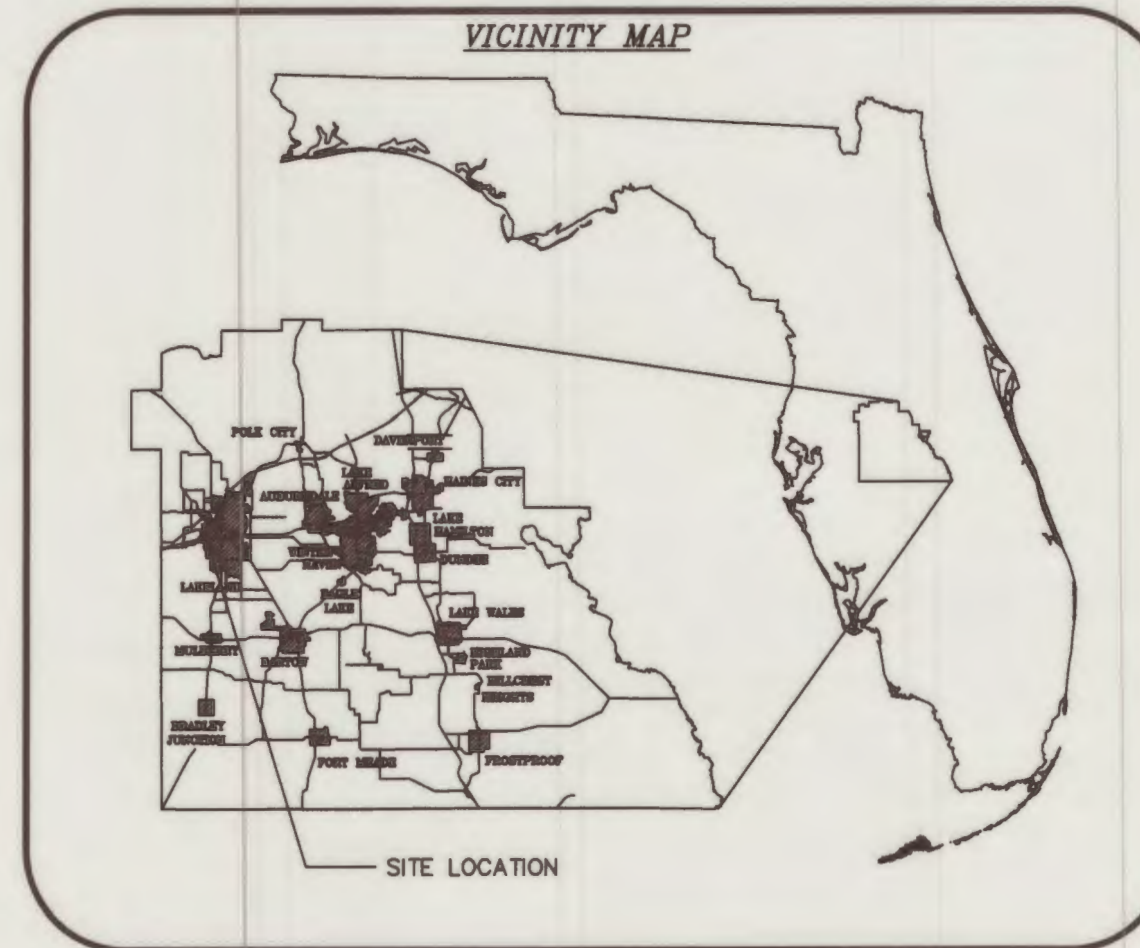
Chairman: _____

Clerk: _____

Approved for Recording: _____ Date _____
Real Estate Services Director

Filed for record in the office of the Clerk of the Circuit Court for the County of Polk,
State of Florida, in Map Book _____ Page(s) _____ on the _____
day of _____, 20____.

Clerk of Circuit Court
Polk County, Florida



INDEX	
SHEET NO.	SHEET DESCRIPTION
1	COVER SHEET
2	M/R/W DETAIL

SURVEY NOTES:

1. All surveyed and calculated bearings, distances, stationing and coordinates shown hereon are grid values referenced to the State Plane Coordinate System, Florida West Zone North American Datum of 1983, adjustment of 2011.
2. All parcel lines and section lines shown hereon are for illustrative purposes only.
3. All found monumentation shown hereon are for information purposes only, additional survey work may be required to determine actual section corners, subdivision corners, or parcel corners.
4. The maintained right-of-way lines shown on this map were field located according to mow lines, constructed roads, edge of dirt roads being graded, or areas being maintained with existing boundaries as being fences, power pole lines, or any obstacle establishing a maintenance boundary. These boundaries are all determined by the unit maintenance supervisor.
5. The original of this map was plotted on mylar and contains original signatures. Attention is directed to the fact that this map may have been altered in size by reproduction if acquired from any other source. This must be considered when obtaining scaled data.

LEGEND:

(C) = CALCULATED
(F) = FIELD
(P) = PLAT
CO. = COUNTY
DEFL. = DEFLECTION
L = LEFT
MB = MAP BOOK
M/R/W = MAINTAINED RIGHT-OF-WAY
NGS = NATIONAL GEODETIC SURVEY
P.B. = PLAT BOOK
PG. = PAGE
P.I. = POINT OF INTERSECTION
P.S.M. = PROFESSIONAL SURVEYOR AND MAPPER
R = RIGHT
R/W = RIGHT-OF-WAY
SIRC = SET IRON ROD AND CAP
STA = STATION
TRAV. = TRAVERSE

Diagram showing a cross-section of a road surface. The top layer is labeled **ASPHALT**. Below it is a layer labeled **DIRT**.

● = IRON ROD AND CAP

— — — — — NEW M/R/W
 — — — — — EXISTING R/W & M/R/W

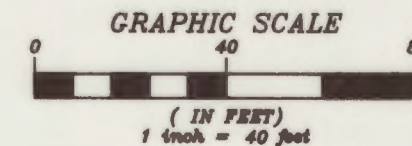
This maintained right-of-way map was prepared and reviewed under my supervision.

4-2-25
Date

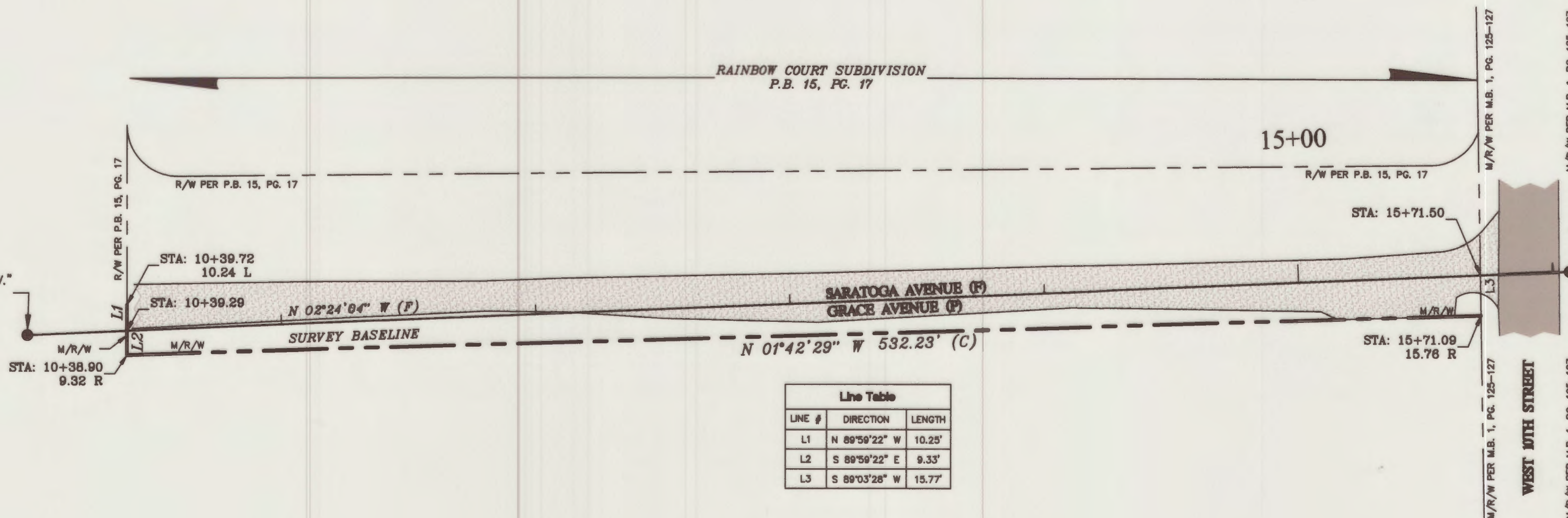
BRYAN C. ZELENNIKI, P.S.
Florida Registration #7140
Polk County Surveying and Mapping Section

POLK COUNTY SURVEYING AND MAPPING 3000 SHEFFIELD ROAD, WINTER HAVEN, FL. 33880 PH. 863-535-2200					
Polk County Maintained Right-of-Way Map of:		SARATOGA AVENUE		Drawn By:	MSK 1/26/23
Township 28 S., Range 23 E.	Maintenance Unit:	5	Field Book No.	83-23	Checked By: RMB 3/13/23
Sections 11	County Road Number:	831407		Field Work Date:	9/22/22

SECTION 11, TOWNSHIP 28 SOUTH, RANGE 23 EAST



BEGIN SURVEY
STA: 10+00
 SIRC 1/2" "POLK CO. TRAV."
 N = 1354759.42
 E = 660982.84



END SURVEY
STA: 16+06.60
 SIRC 1/2" "POLK CO. TRAV."
 N = 1355365.49
 E = 660957.43

Line Table		
LINE #	DIRECTION	LENGTH
L1	N 89°59'22" W	10.25'
L2	S 89°59'22" E	9.33'
L3	S 89°03'28" W	15.77'

SEE SHEET #1 FOR SURVEYOR'S NOTES AND LEGEND