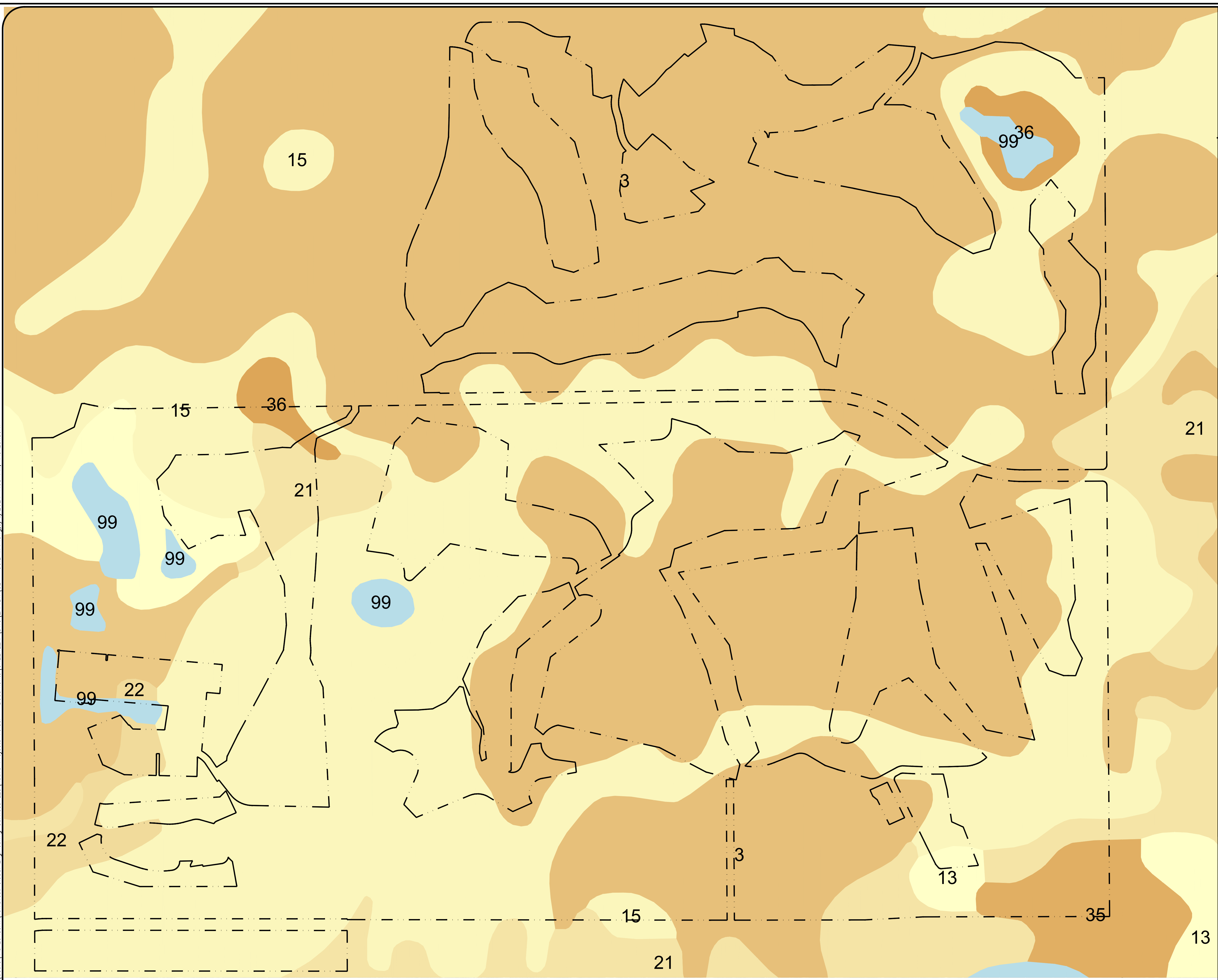
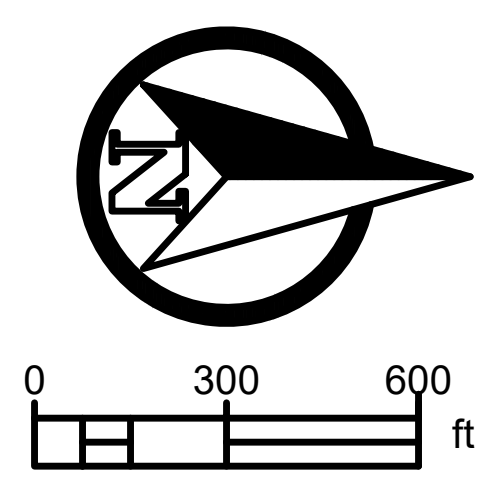


C:\Users\Kunzendorf\TerraWest_Globat_Engineering_Services_LLC\Active_Projects_Folder - Documents\GREENLEAF_DM\EXHIBIT\GL - SOIL_MAP.dwg, 3/6/2024, 7:08 PM, Kunzendorf



APPROVAL STAMP

DESIGNED BY	LUCAS TALHARD
DRAWN BY	LUCAS TALHARD
CHECKED BY	DANIEL KOVACS
SITE PLAN COORDINATE	
BY	XX
NO	
DATE	

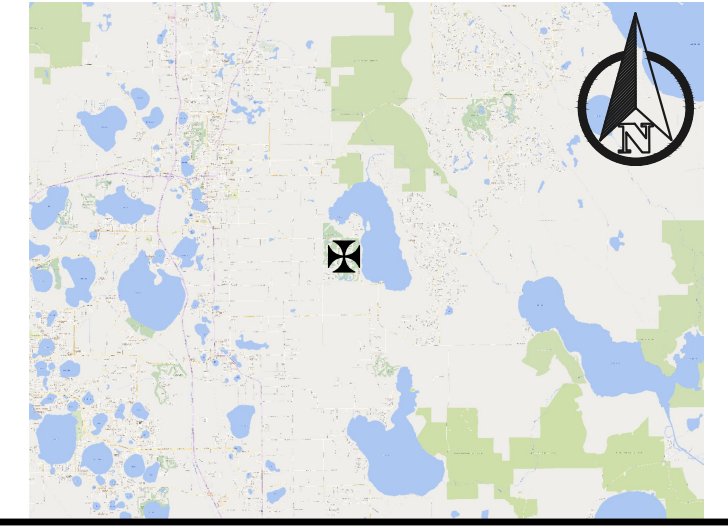


LEGEND

--- PROPERTY BOUNDARY

Polk County, Florida (FL105)			
Map Unit Symbol	Map Unit Name	Acres in AOI	Percent of AOI
3	Candler sand, 0 to 5 percent slopes	1,243.20	40.80%
4	Candler sand, 5 to 8 percent slopes	8.3	0.30%
13	Samsula muck, frequently ponded, 0 to 1 percent slopes	140.4	4.60%
15	Tavares fine sand, 0 to 5 percent slopes	647.6	21.20%
17	Smyrna and Myakka fine sands	2.8	0.10%
21	Immokalee sand	343.8	11.30%
22	Pomello fine sand	16.4	0.50%
23	Ona-Ona, wet, fine sand, 0 to 2 percent slopes	14.4	0.50%
25	Placid and Myakka fine sands, depressional	178.3	5.90%
31	Adamsville fine sand, 0 to 2 percent slopes	23.5	0.80%
35	Hontoon muck, frequently ponded, 0 to 1 percent slopes	26	0.90%
36	Basinger mucky fine sand, frequently ponded, 0 to 1 percent slopes	29.7	1.00%
46	Astatula sand, 0 to 5 percent slopes	15.5	0.50%
53	Myakka-Immokolee-Urban land complex	21	0.70%
59	Arents-Urban land complex, 0 to 5 percent slopes	1.2	0.00%
61	Arents, organic substratum-Urban land complex	10.1	0.30%
74	Narcoossee sand	13.3	0.40%
88	Astatula sand, 5 to 12 percent slopes	5.2	0.20%
99	Water	306.9	10.10%
Totals for Area of Interest		3,047.50	100.00%

LOCATION MAP



CALL 48 HOURS BEFORE YOU DIG

IT'S THE LAW! DIAL 811

811 Know what's below. Call before you dig.

SUNSHINE STATE ONE CALL OF FLORIDA, INC.

NOT CONSIDERED FINAL UNTIL ALL AGENCY COMMENTS ARE RECEIVED AND ALL AGENCY CONSTRUCTION NOT VALID WITHOUT SEAL

SOIL MAP
CONSTRUCTION DOCUMENTS
GREENLEAF
POLK COUNTY, FLORIDA

SHEET TITLE

TRACT ENGINEERING
FROM CONCEPTUAL TO COMPLETION
5137 S LAKELAND DR, SUITE 3
LAKELAND, FL 33813
FIRM REGISTRATION NUMBER - 34943

SHEET 1