

North

End MROW

Begin MROW

Section 17, Township 29 South, Range 26 East

# POLK COUNTY ROADS AND DRAINAGE DIVISION / SURVEYING AND MAPPING SECTION

## MAINTAINED RIGHT-OF-WAY MAP FOR 2ND STREET WEST POLK COUNTY, FLORIDA

**SURVEY NOTES:**

1. All surveyed and calculated bearings, distances, stationing and coordinates shown hereon are grid values referenced to the State Plane Coordinate System, Florida West Zone North American Datum of 1983, adjustment of 2011.
2. All parcel lines and section lines shown hereon are for illustrative purposes only.
3. All found monumentation shown hereon are for information purposes only, additional survey work may be required to determine actual section corners, subdivision corners, or parcel corners.
4. The maintained right-of-way lines shown on this map were field located according to mow lines, constructed roads, edge of dirt roads being graded, or areas being maintained with existing boundaries as being fences, power pole lines, or any obstacle establishing a maintenance boundary. These boundaries are all determined by the unit maintenance supervisor.
5. The original of this map was plotted on mylar and contains original signatures. Attention is directed to the fact that this map may have been altered in size by reproduction if acquired from any other source. This must be considered when obtaining scaled data.

**CERTIFICATE**

I hereby certify that the maintained right-of-way as shown on this map has been:  
 \_\_\_\_\_ Maintained or repaired for four or more years by Polk County maintenance forces, \_\_\_\_\_ road having been constructed by Polk County; or  
 \_\_\_\_\_ Maintained or repaired for seven or more years by Polk County maintenance forces.

Area Maintenance Manager \_\_\_\_\_  
 (Print)

Area Maintenance Manager \_\_\_\_\_  
 (Signature)

It is certified that the lands depicted upon this map lying between the lines marked "maintained right-of-way" are vested in Polk County, Florida, pursuant to the provisions of Section 95.361, Florida Statutes, by virtue of said road having been constructed and/or maintained by Polk County as required by Section 95.361.

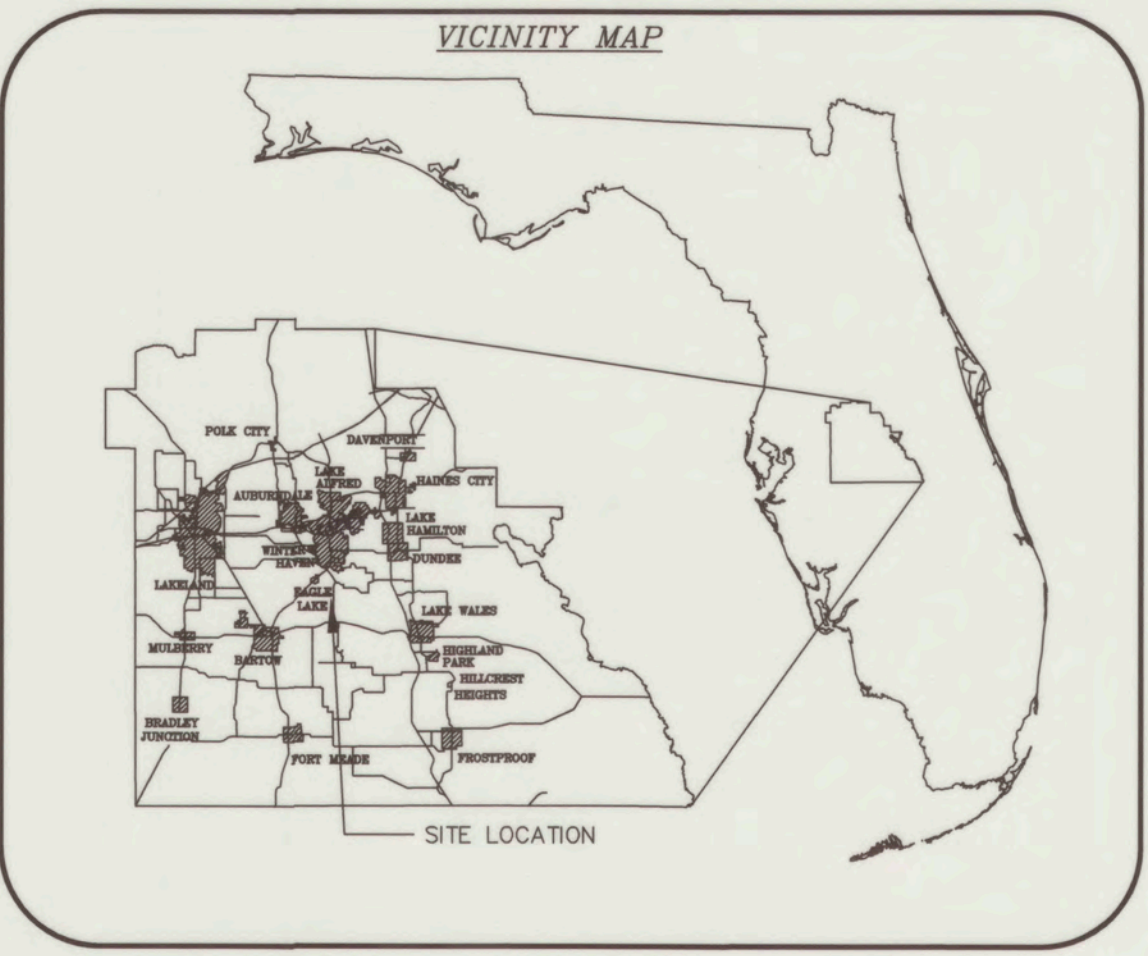
Chairman: \_\_\_\_\_

Clerk: \_\_\_\_\_

Approved for Recording: \_\_\_\_\_  
 Real Estate Services Director                      Date

Filed for record in the office of the Clerk of the Circuit Court for the County of Polk, State of Florida, in Map Book \_\_\_\_\_ Page(s) \_\_\_\_\_ on the \_\_\_\_\_ day of \_\_\_\_\_, 20\_\_\_\_.

\_\_\_\_\_  
 Clerk of Circuit Court  
 Polk County, Florida



**LEGEND:**

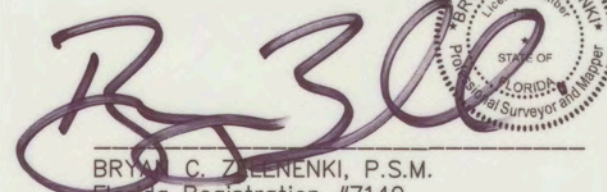
- (C) = CALCULATED
- (F) = FIELD
- CO. = COUNTY
- DEFL. = DEFLECTION
- F.D.O.T. = FLORIDA DEPARTMENT OF TRANSPORTATION
- L = LEFT
- M/R/W = MAINTAINED RIGHT-OF-WAY
- NGS = NATIONAL GEODETIC SURVEY
- O.R.B. = OFFICIAL RECORD BOOK
- P.B. = PLAT BOOK
- PG. = PAGE
- P.I. = POINT OF INTERSECTION
- P.S.M. = PROFESSIONAL SURVEYOR AND MAPPER
- R = RIGHT
- R/W = RIGHT-OF-WAY
- SIRC = SET IRON ROD AND CAP
- STA = STATION
- TRAV. = TRAVERSE



- = AXLE
- = IRON PIPE
- = IRON ROD AND CAP

- M/R/W
- - - - - EXISTING R/W & M/R/W

**6-10-26**  
 Date

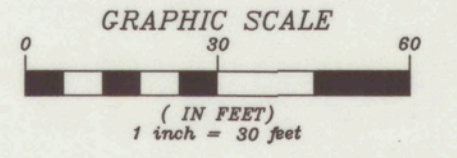
  
 BRYAN C. ZELENENKI, P.S.M.  
 Florida Registration #7140  
 Polk County Surveying & Mapping Section

INDEX	
SHEET NO.	SHEET DESCRIPTION
1	COVER SHEET
2-4	M/R/W DETAIL

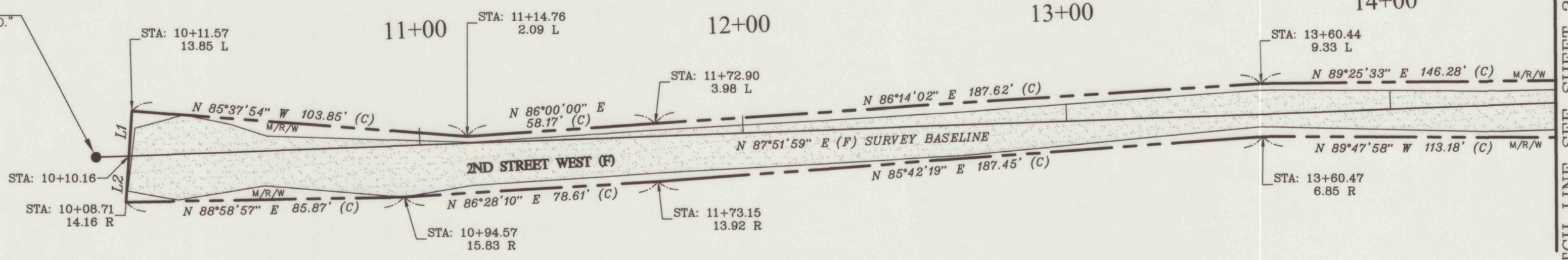
This maintained right-of-way map was prepared and reviewed under my supervision.

POLK COUNTY SURVEYING AND MAPPING 3000 SHEFFIELD ROAD, WINTER HAVEN, FL. 33880 PH. 863-535-2200			
Polk County Maintained Right-of-Way Map of:	2ND STREET WEST	Drawn By:	RWY 08/03/21
Township 29 S., Range 26 E.	Maintenance Unit: 2	Field Book No. 96-20	Checked By: BCZ 10/29/25
Section 17	County Road Number: 961716	Field Work Date:	06/22/21

SECTION 17, TOWNSHIP 29 SOUTH, RANGE 26 EAST



**BEGIN SURVEY**  
**STA: 10+00**  
 SIRC 1/2" "POLK CO."  
 N = 1318160.77  
 E = 743224.56

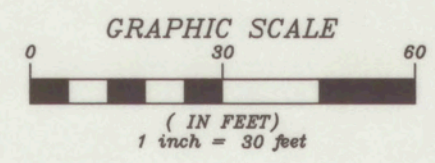


Line Table		
LINE #	DIRECTION	LENGTH
L1	N 3°42'03" E	13.92'
L2	S 3°42'03" W	14.24'

SEE SHEET #1 FOR SURVEYOR'S NOTES AND LEGEND

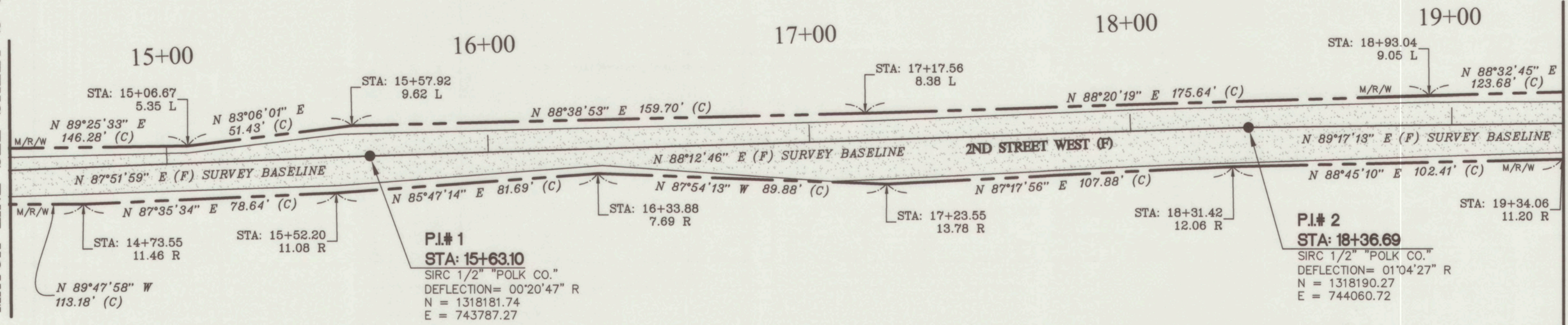
MATCH LINE SEE SHEET 3 OF 4

SECTION 17, TOWNSHIP 29 SOUTH, RANGE 26 EAST



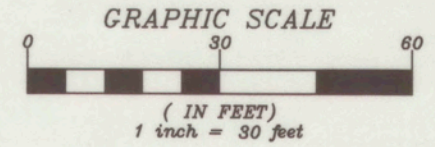
MATCH LINE SEE SHEET 2 OF 4

MATCH LINE SEE SHEET 4 OF 4

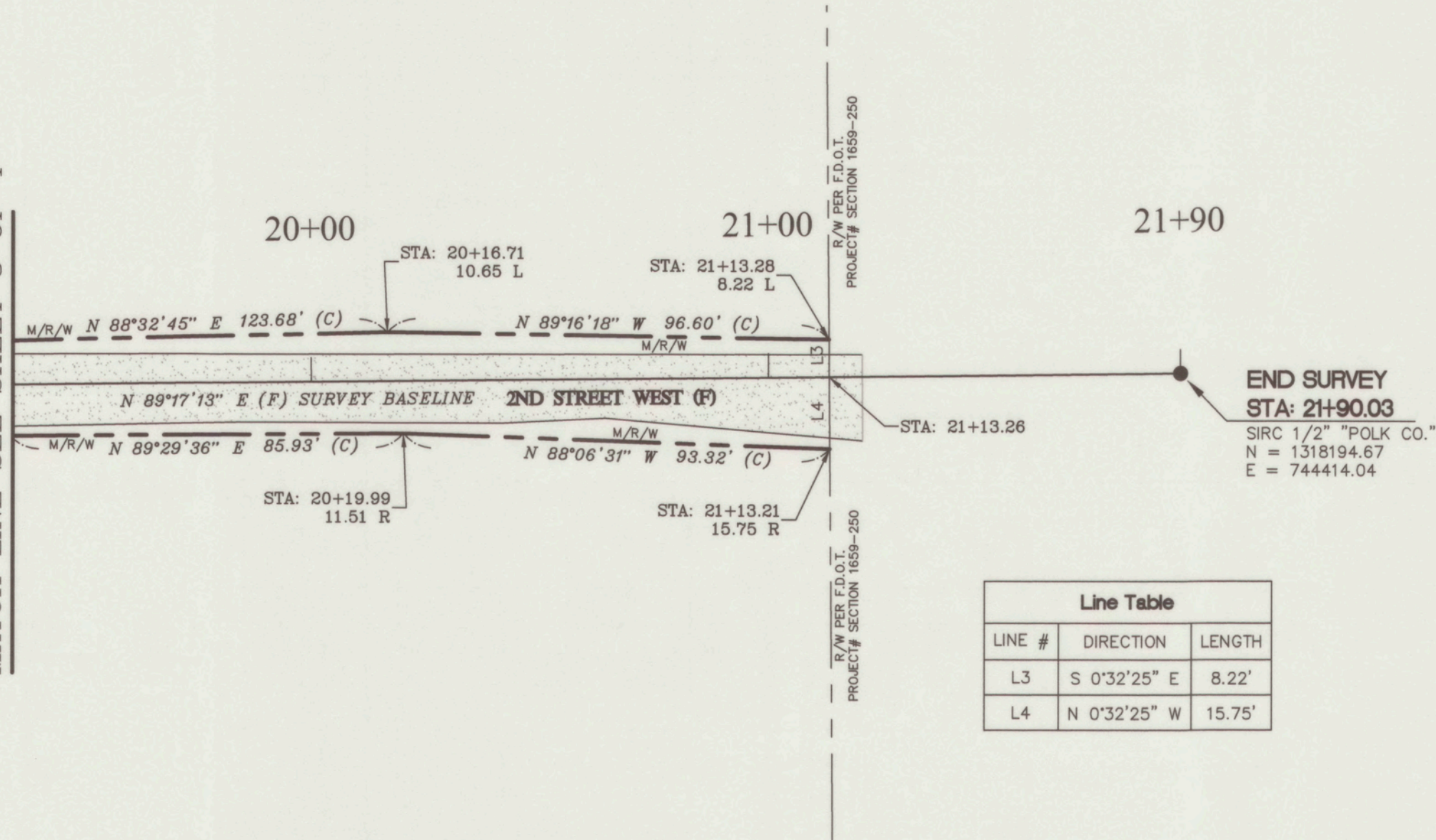


SEE SHEET #1 FOR SURVEYOR'S NOTES AND LEGEND

SECTION 17, TOWNSHIP 29 SOUTH, RANGE 26 EAST



MATCH LINE SEE SHEET 3 OF 4



Line Table		
LINE #	DIRECTION	LENGTH
L3	S 0°32'25" E	8.22'
L4	N 0°32'25" W	15.75'

SEE SHEET #1 FOR SURVEYOR'S NOTES AND LEGEND