

North

End MROW Map

Begin MROW Map

Sections 12, 13 and 24, Township 30 South, Range 25 East



# POLK COUNTY ROADS AND DRAINAGE DIVISION / SURVEYING AND MAPPING SECTION

## MAINTAINED RIGHT-OF-WAY MAP FOR SAND LAKE ROAD/L. STENGER ROAD POLK COUNTY, FLORIDA

### CERTIFICATE

I hereby certify that the maintained right-of-way as shown on this map has been:  
 \_\_\_\_\_ Maintained or repaired for four or more years by Polk County maintenance forces, \_\_\_\_\_ road having been constructed by Polk County; or  
 \_\_\_\_\_ Maintained or repaired for seven or more years by Polk County maintenance forces.

Area Maintenance Manager \_\_\_\_\_  
 (Print)

Area Maintenance Manager \_\_\_\_\_  
 (Signature)

It is certified that the lands depicted upon this map lying between the lines marked "maintained right-of-way" are vested in Polk County, Florida, pursuant to the provisions of Section 95.361, Florida Statutes, by virtue of said road having been constructed and/or maintained by Polk County as required by Section 95.361.

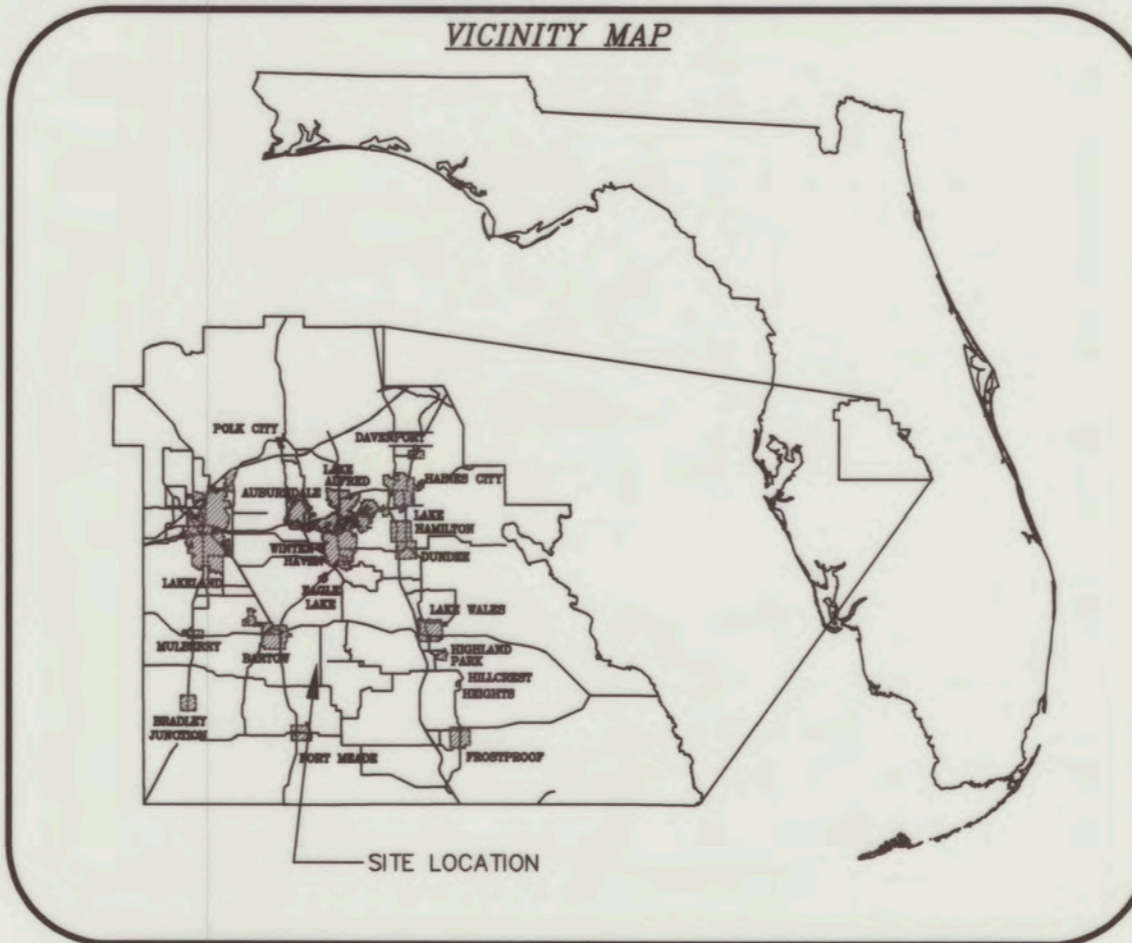
Chairman: \_\_\_\_\_

Clerk: \_\_\_\_\_

Approved for Recording: \_\_\_\_\_ Date \_\_\_\_\_  
 Real Estate Services Director

Filed for record in the office of the Clerk of the Circuit Court for the County of Polk, State of Florida, in Map Book \_\_\_\_\_ Page(s) \_\_\_\_\_ on the \_\_\_\_\_ day of \_\_\_\_\_, 20\_\_\_\_.

\_\_\_\_\_  
 Clerk of Circuit Court  
 Polk County, Florida



### SURVEY NOTES:

- All surveyed and calculated bearings, distances, stationing and coordinates shown hereon are grid values referenced to the State Plane Coordinate System, Florida West Zone North American Datum of 1983, adjustment of 2011.
- This maintained right-of-way map is an update of a previously recorded map filed in Map Book 5, Pages 87-97, Public Records of Polk County, Florida. This map supplements the previous map, and shows all relevant information from said map, as well as updated right-of-way information.
- All parcel lines and section lines shown hereon are for illustrative purposes only.
- All found monumentation shown hereon are for information purposes only, additional survey work may be required to determine actual section corners, subdivision corners, or parcel corners.
- The maintained right-of-way lines shown on this map were field located according to mow lines, constructed roads, edge of dirt roads being graded, or areas being maintained with existing boundaries as being fences, power pole lines, or any obstacle establishing a maintenance boundary. These boundaries are all determined by the unit maintenance supervisor.
- The original of this map was plotted on mylar and contains original signatures. Attention is directed to the fact that this map may have been altered in size by reproduction if acquired from any other source. This must be considered when obtaining scaled data.

### LEGEND:

- (C) = CALCULATED
  - (F) = FIELD
  - FRRS = FOUND RAILROAD SPIKE
  - FIRC = FOUND IRON ROD AND CAP
  - FIR = FOUND IRON ROD
  - FIP = FOUND IRON PIPE
  - DEFL. = DEFLECTION
  - L = LEFT
  - MB = MAP BOOK
  - M/R/W = MAINTAINED RIGHT-OF-WAY
  - NGS = NATIONAL GEODETIC SURVEY
  - P.B. = PLAT BOOK
  - PG. = PAGE
  - P.I. = POINT OF INTERSECTION
  - P.S.M. = PROFESSIONAL SURVEYOR AND MAPPER
  - R = RIGHT
- ASPHALT
  - DIRT
  - R/W = RIGHT-OF-WAY
  - SIRC = SET IRON ROD AND CAP
  - STA = STATION
  - TRAV. = TRAVERSE
  - ⊗ = AXLE
  - △ = RAILROAD SPIKE
  - = IRON PIPE
  - = IRON ROD AND CAP
  - — — M/R/W
  - — — EXISTING R/W & M/R/W

This maintained right-of-way map was prepared and reviewed under my supervision.

07/09/2025  
 DATE

BRYAN C. ZELENENKI, P.S.M.  
 FLORIDA REGISTRATION #7140  
 POLK COUNTY SURVEYING AND MAPPING SECTION

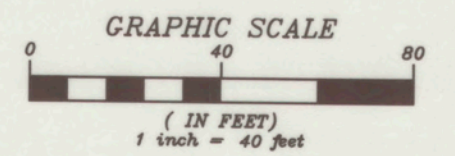
### INDEX

SHEET NO.	SHEET DESCRIPTION
1	COVER SHEET
02-23	M/R/W DETAIL

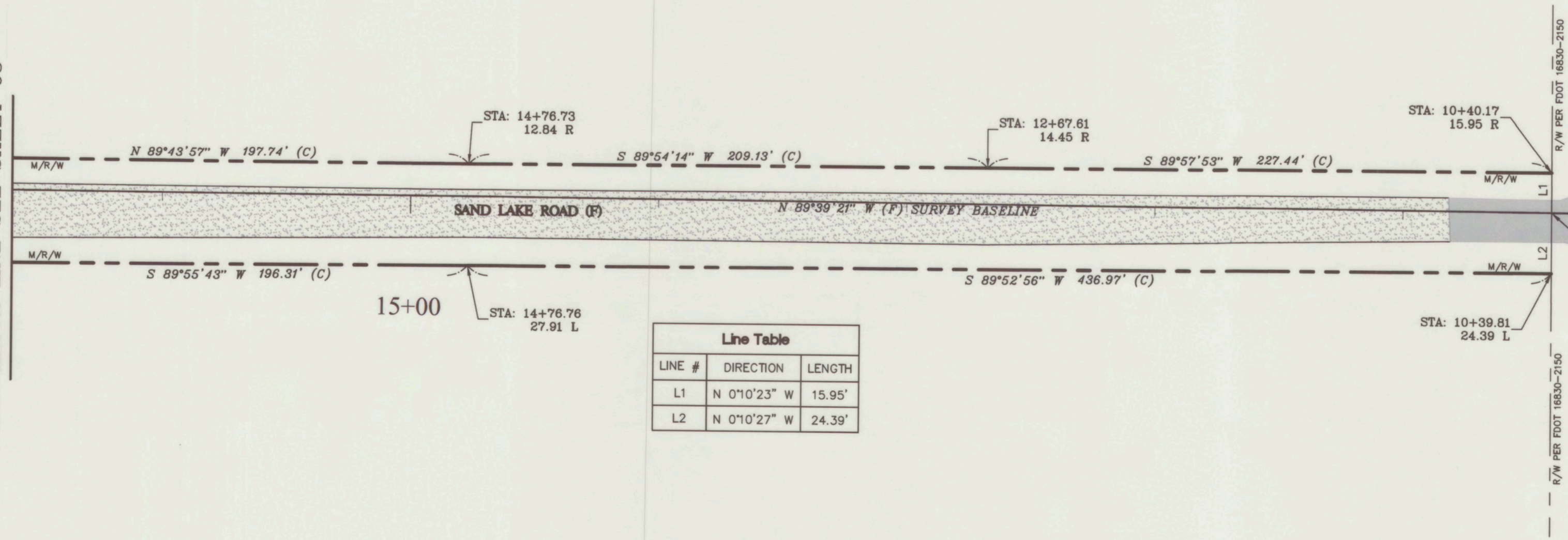
POLK COUNTY SURVEYING AND MAPPING 3000 SHEFFIELD ROAD, WINTER HAVEN, FL. 33880 PH. 863-535-2200			
Polk County Maintained Right-of-Way Map of:	SAND LAKE ROAD	Drawn By:	RWY 09/09/24
Township 30 S., Range 25 E.	Maintenance Unit: UNIT #2	Field Book No.:	RLF2
Sections 12,13 & 24	County Road Number: 052401 & 051202	Checked By:	RMB 01/08/25
		Approved By:	BCZ 06/12/25



SECTION 24, TOWNSHIP 30 SOUTH, RANGE 25 EAST



MATCH LINE SEE SHEET 03



**BEGIN SURVEY**  
 STA: 10+00.00  
 FRRS  
 N = 1280917.50  
 E = 733319.30

**ALTURAS - BABSON PARK CUT-OFF ROAD**

STA: 10+40.03

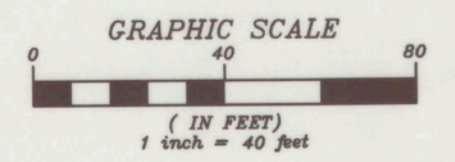
**80 FOOT ROAD (F)**

Line Table		
LINE #	DIRECTION	LENGTH
L1	N 0°10'23" W	15.95'
L2	N 0°10'27" W	24.39'

SEE SHEET #1 FOR SURVEYOR'S NOTES AND LEGEND



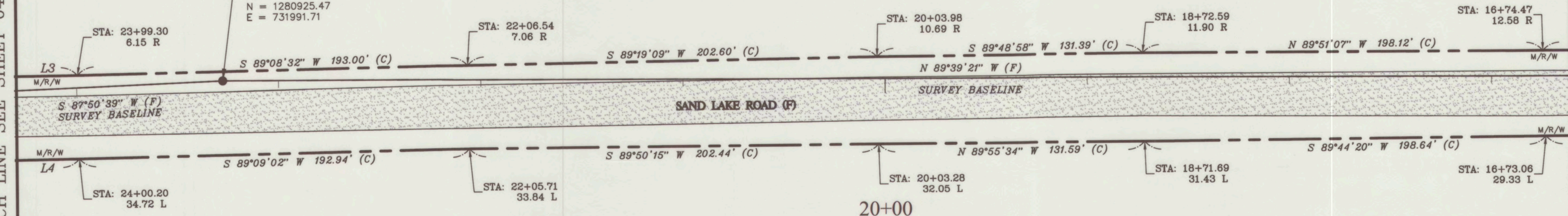
SECTION 24, TOWNSHIP 30 SOUTH, RANGE 25 EAST



P.I. #1  
 STA: 23+27.62  
 DEFL. = 02°30'00" L  
 FIR 1"  
 N = 1280925.47  
 E = 731991.71

MATCH LINE SEE SHEET 04

MATCH LINE SEE SHEET 02

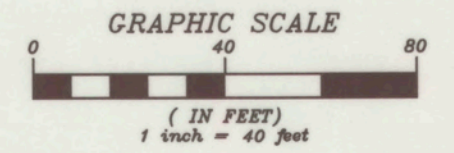


Line Table		
LINE #	DIRECTION	LENGTH
L3	S 89°24'38" W	192.87'
L4	S 89°14'36" W	191.31'

SEE SHEET #1 FOR SURVEYOR'S NOTES AND LEGEND

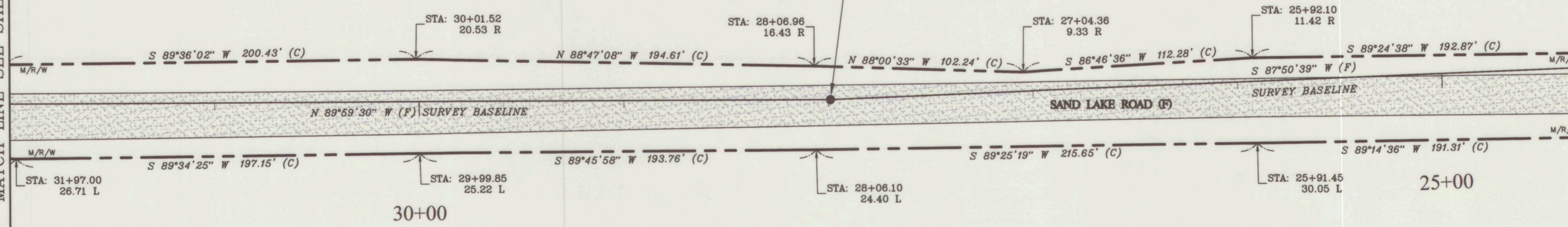


SECTION 24, TOWNSHIP 30 SOUTH, RANGE 25 EAST



MATCH LINE SEE SHEET 05

MATCH LINE SEE SHEET 03



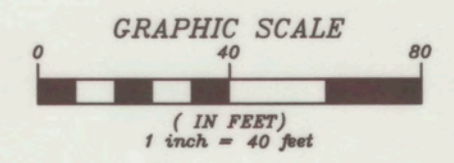
P.I. #2  
 STA: 27+99.04  
 DEFL. = 02°09'51" R  
 SIRC 1/2" POLK COUNTY  
 N = 1280907.74  
 E = 731520.62

SEE SHEET #1 FOR SURVEYOR'S NOTES AND LEGEND



SECTION 24, TOWNSHIP 30 SOUTH, RANGE 25 EAST

MATCH LINE SEE SHEET 06



STA: 37+45.74  
27.25 L

STA: 37+52.84  
11.74 R

N 13°49'09" W (F) SURVEY BASELINE

Line Table		
LINE #	DIRECTION	LENGTH
L5	N 4°59'57" W	174.00'

P.I. #4  
STA: 36+37.62  
DEFL. = 25°59'46" R  
SIRC 1/2" "POLK COUNTY"  
N = 1280991.55  
E = 730721.24

RADIUS = 190.00 (C)  
CENTRAL ANGLE = 85°56'17" (C)  
CHORD DISTANCE = 259.01 (C)  
CHORD BEARING = S 46°38'32" E (C)  
LENGTH = 284.98 (C)

RADIUS = 220.00 (C)  
CENTRAL ANGLE = 83°02'52" (C)  
CHORD DISTANCE = 291.69 (C)  
CHORD BEARING = N 46°31'23" W (C)  
LENGTH = 318.88 (C)

N 39°48'55" W (F) SURVEY BASELINE

P.I. #3  
STA: 35+28.64  
DEFL. = 50°10'35" R  
SIRC 1/2" "POLK COUNTY"  
N = 1280907.84  
E = 730791.02

35+00

STA: 34+26.22  
20.59 R

STA: 32+01.94  
19.10 R

N 89°36'41" W 224.29' (C)

SAND LAKE ROAD (F) N 89°59'30" W (F)

SURVEY BASELINE

N 88°02'50" W 242.18' (C)

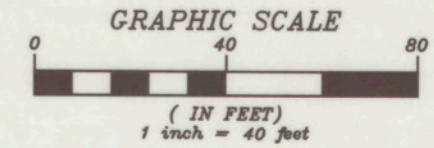
STA: 34+39.04  
18.50 L

MATCH LINE SEE SHEET 04

SEE SHEET #1 FOR SURVEYOR'S NOTES AND LEGEND

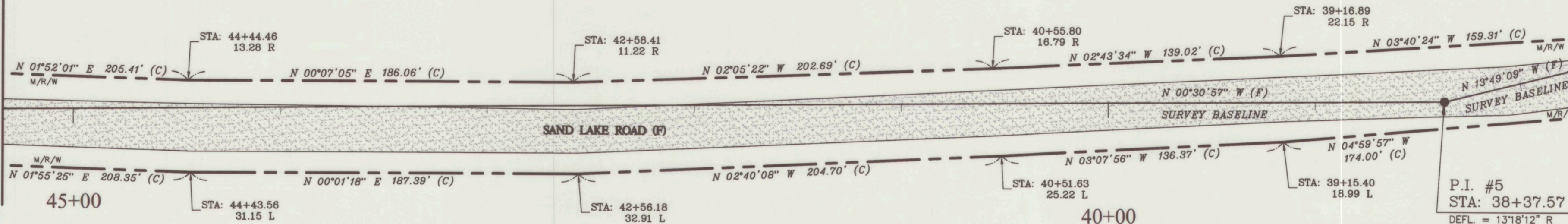


SECTION 24, TOWNSHIP 30 SOUTH, RANGE 25 EAST



MATCH LINE SEE SHEET 07

MATCH LINE SEE SHEET 05



P.I. #5  
 STA: 38+37.57  
 DEFL. = 13'18"12" R  
 SIRC 1/2" "POLK COUNTY."  
 N = 1281185.72  
 E = 730673.48

SEE SHEET #1 FOR SURVEYOR'S NOTES AND LEGEND

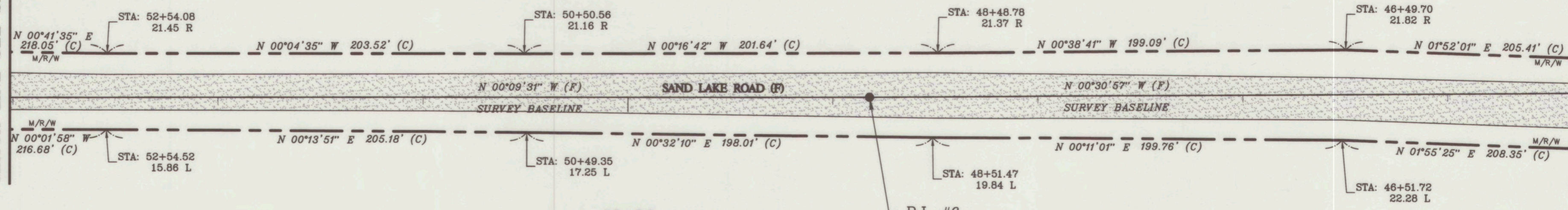


SECTION 24, TOWNSHIP 30 SOUTH, RANGE 25 EAST



MATCH LINE SEE SHEET 08

MATCH LINE SEE SHEET 06



50+00

P.I. #6  
 STA: 48+82.18  
 DEFL. = 00°21'26" R  
 SIRC 1/2" "POLK COUNTY."  
 N = 1282230.29  
 E = 730664.08

SEE SHEET #1 FOR SURVEYOR'S NOTES AND LEGEND

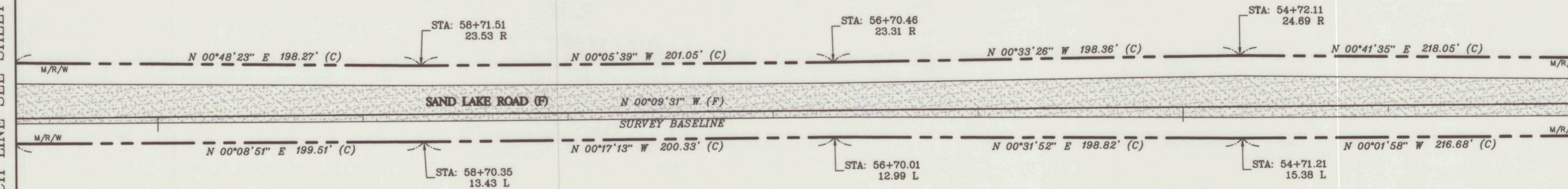


SECTION 24, TOWNSHIP 30 SOUTH, RANGE 25 EAST



MATCH LINE SEE SHEET 09

MATCH LINE SEE SHEET 07



60+00

55+00

SEE SHEET #1 FOR SURVEYOR'S NOTES AND LEGEND



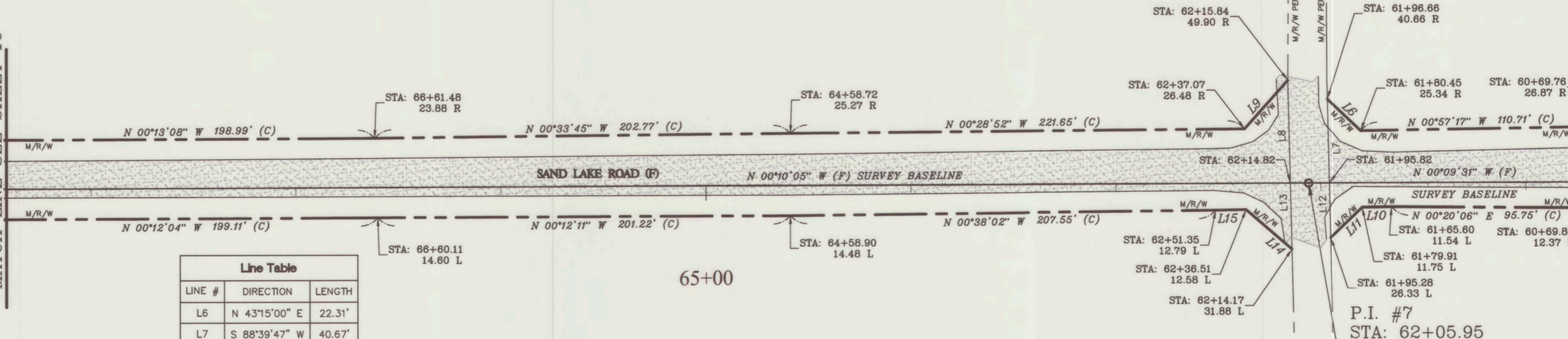


SECTION 13, TOWNSHIP 30 SOUTH, RANGE 25 EAST

SECTION 24, TOWNSHIP 30 SOUTH, RANGE 25 EAST

MATCH LINE SEE SHEET 10

MATCH LINE SEE SHEET 08



Line Table		
LINE #	DIRECTION	LENGTH
L6	N 43°15'00" E	22.31'
L7	S 88°39'47" W	40.67'
L8	N 88°39'47" E	49.91'
L9	N 47°57'56" W	31.61'
L10	N 0°59'51" W	14.31'
L11	N 43°38'07" W	21.18'
L12	N 88°39'47" E	26.33'
L13	S 88°39'47" W	31.88'
L14	N 40°39'50" E	29.52'
L15	N 0°59'51" W	14.85'

P.I. #7  
 STA: 62+05.95  
 DEFL. = 00°00'34" L  
 FIP 1/2"  
 N = 1283554.05  
 E = 730660.41

SEE SHEET #1 FOR SURVEYOR'S NOTES AND LEGEND



SECTION 13, TOWNSHIP 30 SOUTH, RANGE 25 EAST

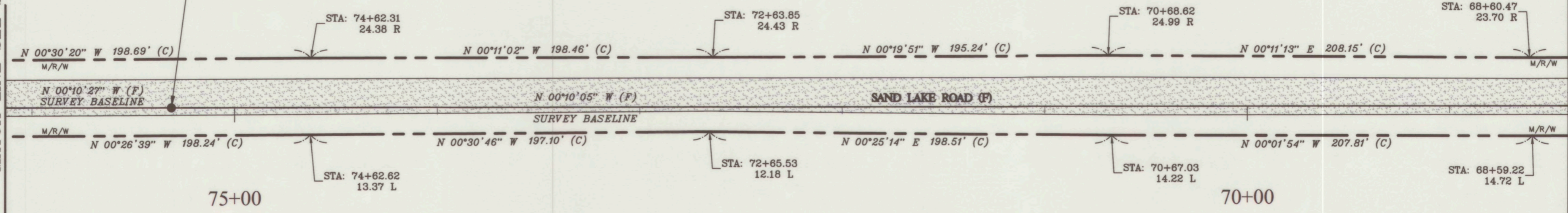


MATCH LINE SEE SHEET 11

MATCH LINE SEE SHEET 09

P.I. #8  
STA: 75+31.25

DEFL. = 00°00'22" L  
FIR 5/8"  
N = 1284879.34  
E = 730656.52



SEE SHEET #1 FOR SURVEYOR'S NOTES AND LEGEND



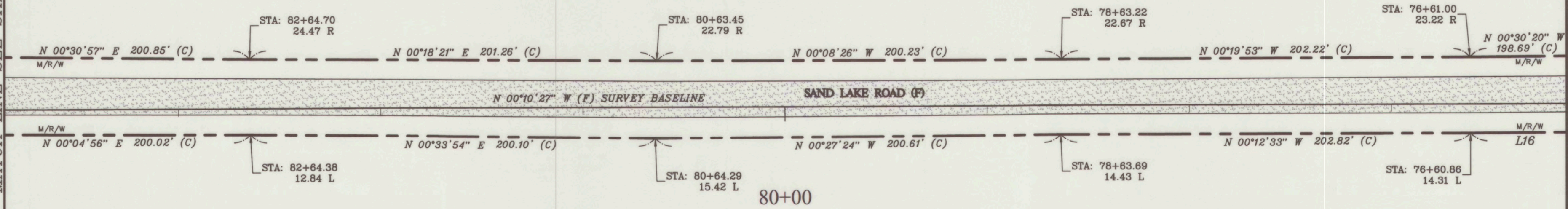
SECTION 13, TOWNSHIP 30 SOUTH, RANGE 25 EAST



Line Table		
LINE #	DIRECTION	LENGTH
L16	N 0°26'39" W	198.24'

MATCH LINE SEE SHEET 12

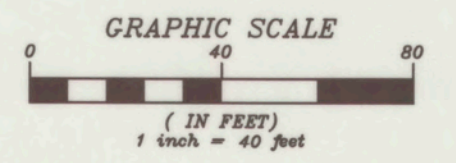
MATCH LINE SEE SHEET 10



SEE SHEET #1 FOR SURVEYOR'S NOTES AND LEGEND



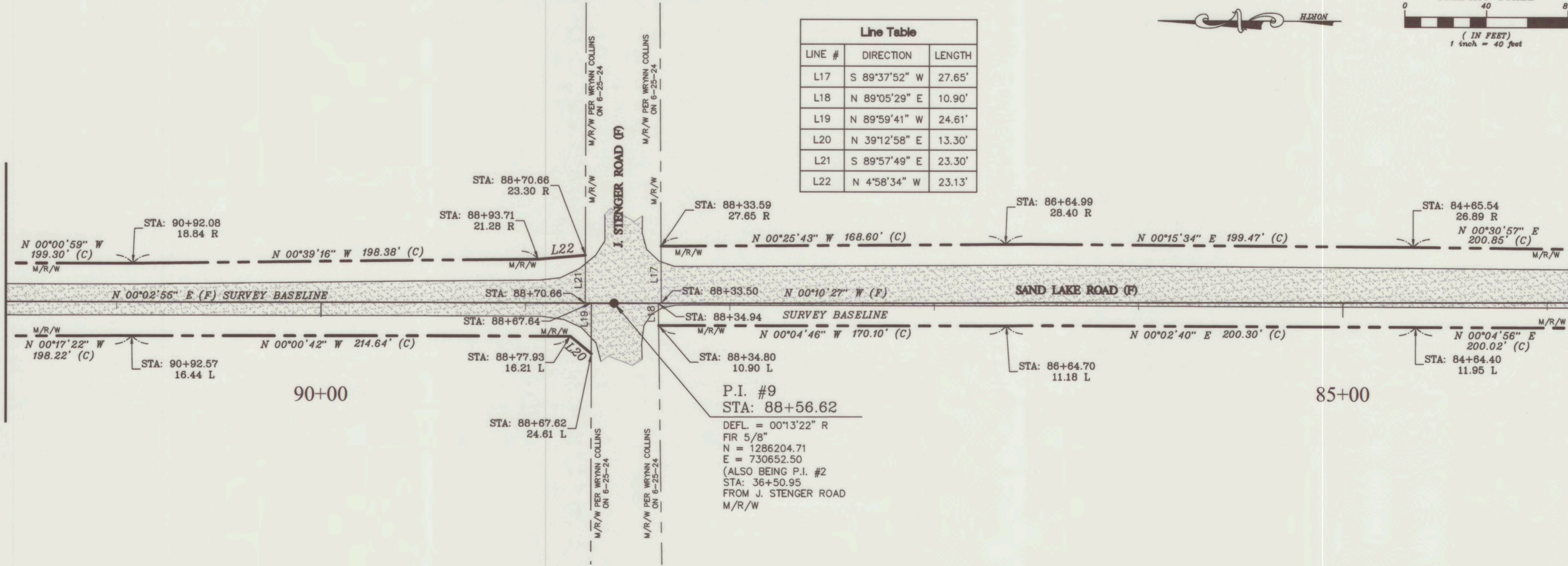
SECTION 13, TOWNSHIP 30 SOUTH, RANGE 25 EAST



LINE #	DIRECTION	LENGTH
L17	S 89°37'52" W	27.65'
L18	N 89°05'29" E	10.90'
L19	N 89°59'41" W	24.61'
L20	N 39°12'58" E	13.30'
L21	S 89°57'49" E	23.30'
L22	N 4°58'34" W	23.13'

MATCH LINE SEE SHEET 13

MATCH LINE SEE SHEET 11



SEE SHEET #1 FOR SURVEYOR'S NOTES AND LEGEND



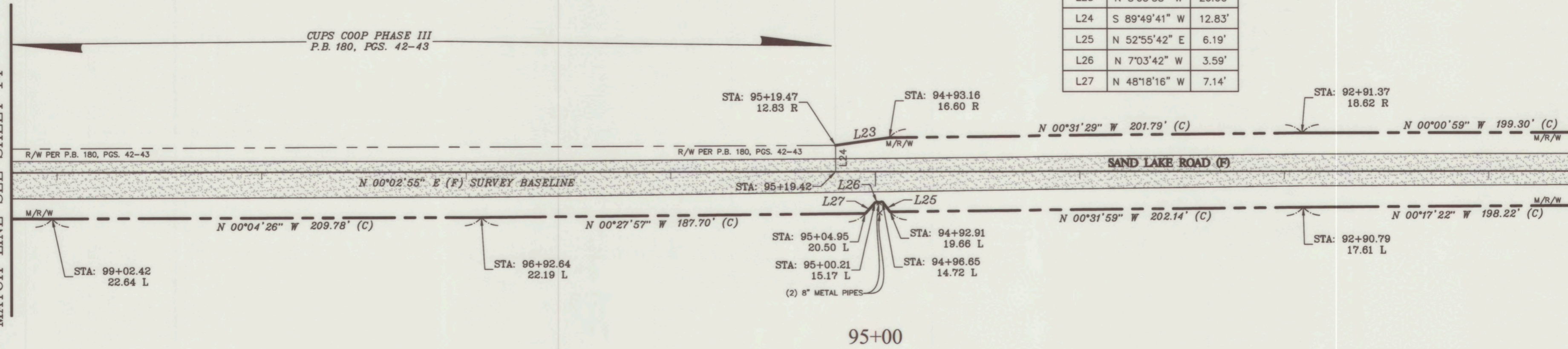
SECTION 13, TOWNSHIP 30 SOUTH, RANGE 25 EAST



Line Table		
LINE #	DIRECTION	LENGTH
L23	N 8°05'58" W	26.60'
L24	S 89°49'41" W	12.83'
L25	N 52°55'42" E	6.19'
L26	N 7°03'42" W	3.59'
L27	N 48°18'16" W	7.14'

MATCH LINE SEE SHEET 14

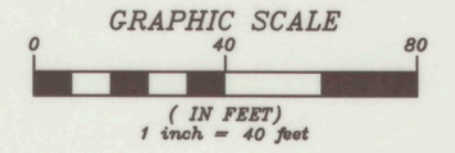
MATCH LINE SEE SHEET 12



SEE SHEET #1 FOR SURVEYOR'S NOTES AND LEGEND

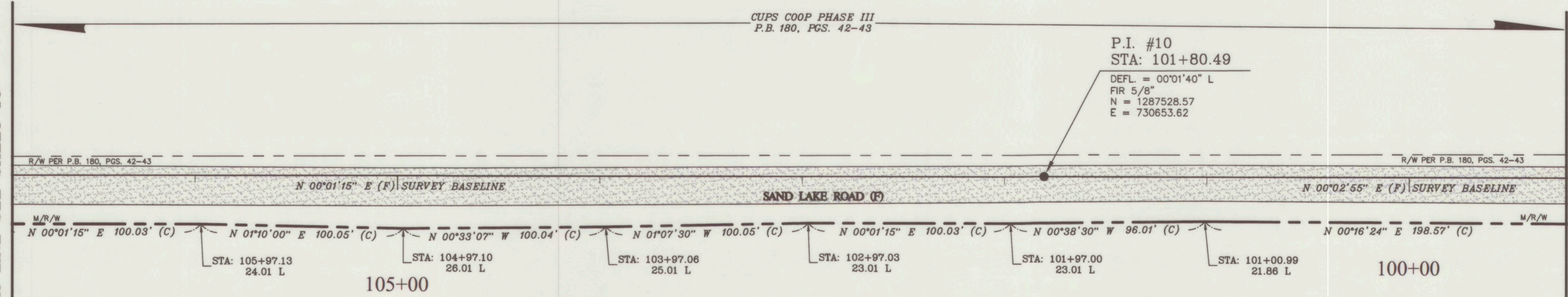


SECTION 13, TOWNSHIP 30 SOUTH, RANGE 25 EAST



MATCH LINE SEE SHEET 15

MATCH LINE SEE SHEET 13



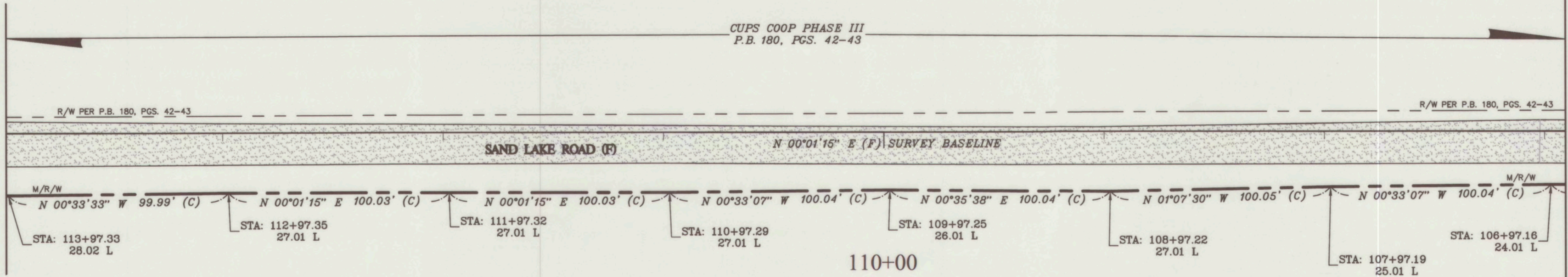
SEE SHEET #1 FOR SURVEYOR'S NOTES AND LEGEND



SECTION 13, TOWNSHIP 30 SOUTH, RANGE 25 EAST



MATCH LINE SEE SHEET 16



MATCH LINE SEE SHEET 14

SEE SHEET #1 FOR SURVEYOR'S NOTES AND LEGEND



SECTION 12, TOWNSHIP 30 SOUTH, RANGE 25 EAST

SECTION 13,  
TOWNSHIP 30 SOUTH,  
RANGE 25 EAST



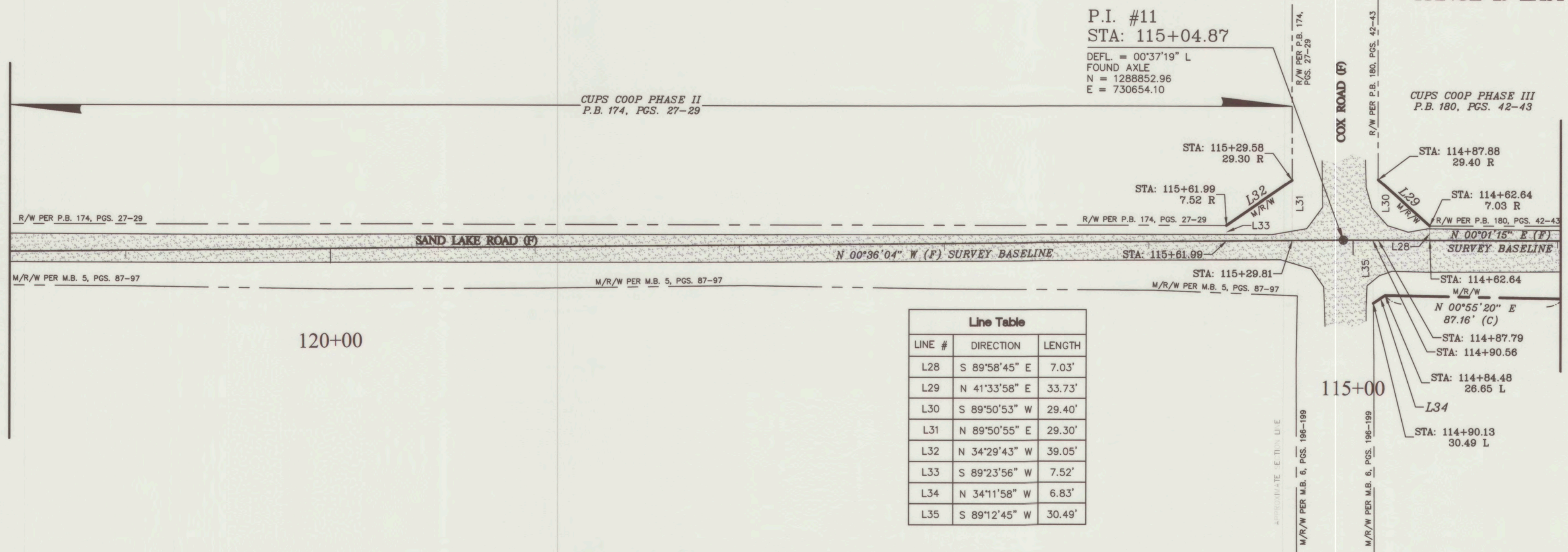
CUPS COOP PHASE II  
P.B. 174, PGS. 27-29

P.I. #11  
STA: 115+04.87  
DEFL. = 00°37'19" L  
FOUND AXLE  
N = 1288852.96  
E = 730654.10

CUPS COOP PHASE III  
P.B. 180, PGS. 42-43

MATCH LINE SEE SHEET 17

MATCH LINE SEE SHEET 15

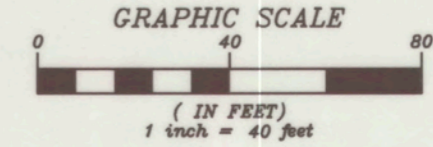


Line Table		
LINE #	DIRECTION	LENGTH
L28	S 89°58'45" E	7.03'
L29	N 41°33'58" E	33.73'
L30	S 89°50'53" W	29.40'
L31	N 89°50'55" E	29.30'
L32	N 34°29'43" W	39.05'
L33	S 89°23'56" W	7.52'
L34	N 34°11'58" W	6.83'
L35	S 89°12'45" W	30.49'

SEE SHEET #1 FOR SURVEYOR'S NOTES AND LEGEND



SECTION 12, TOWNSHIP 30 SOUTH, RANGE 25 EAST



MATCH LINE SEE SHEET 18

MATCH LINE SEE SHEET 16

CUPS COOP PHASE II  
P.B. 174, PG. 27-29

N 00°03'45" W (F)  
SURVEY BASELINE

STA: 128+32.76  
20.20 R

N 00°07'28" W  
338.89' (C)

R/W PER P.B. 174, PGS. 27-29

R/W PER P.B. 174, PGS. 27-29

STA: 128+32.95

STA: 128+20.50

N 00°36'04" W (F)

SAND LAKE ROAD (F)

SURVEY BASELINE

M/R/W PER M.B. 5, PGS. 87-97

N 00°17'03" E  
294.25' (C)

STA: 128+20.50  
7.19 L

STA: 128+30.05  
7.27 L

L38

P.I. #12  
STA: 128+84.29

DEFL. = 00°32'19" R  
SIRC 1/2" "POLK CO. TRAV."  
N = 1290232.30  
E = 730639.62

Line Table		
LINE #	DIRECTION	LENGTH
L36	S 89°23'56" W	7.19'
L37	N 89°57'17" E	20.20'
L38	N 1°02'22" W	9.55'

125+00

SEE SHEET #1 FOR SURVEYOR'S NOTES AND LEGEND

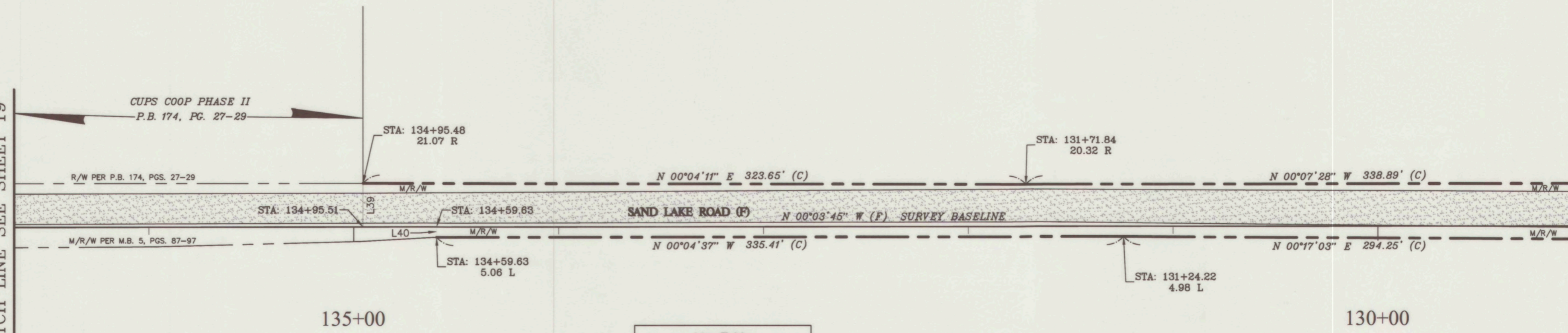


SECTION 12, TOWNSHIP 30 SOUTH, RANGE 25 EAST



MATCH LINE SEE SHEET 19

MATCH LINE SEE SHEET 17

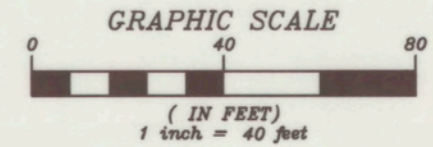


Line Table		
LINE #	DIRECTION	LENGTH
L39	N 89°59'31" W	21.07'
L40	N 89°56'15" E	5.06'

SEE SHEET #1 FOR SURVEYOR'S NOTES AND LEGEND

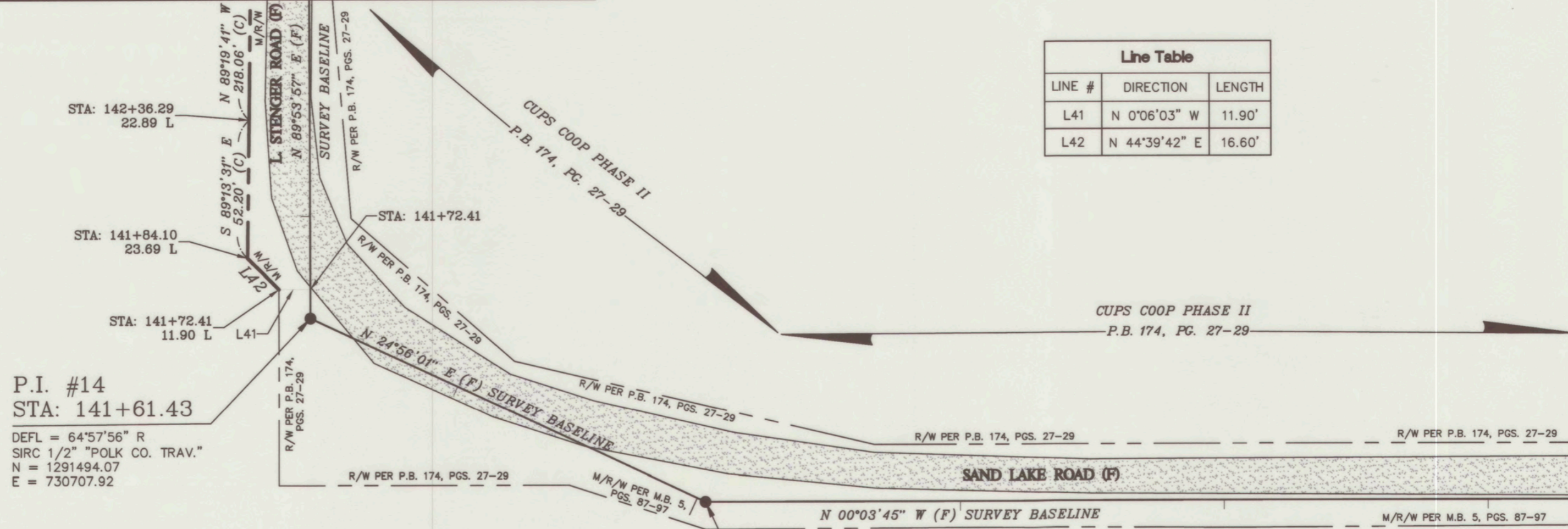


SECTION 12, TOWNSHIP 30 SOUTH, RANGE 25 EAST



MATCH LINE SEE SHEET 20

Line Table		
LINE #	DIRECTION	LENGTH
L41	N 0°06'03" W	11.90'
L42	N 44°39'42" E	16.60'



P.I. #14  
 STA: 141+61.43  
 DEFL = 64°57'56" R  
 SIRC 1/2" "POLK CO. TRAV."  
 N = 1291494.07  
 E = 730707.92

P.I. #13  
 STA: 139+96.55  
 DEFL. = 24°59'46" R  
 SIRC 1/2" "POLK COUNTY"  
 N = 1291344.56  
 E = 730638.41

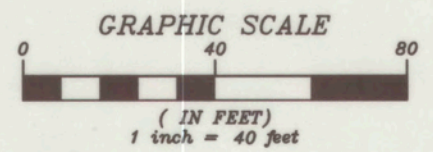
140+00

SEE SHEET #1 FOR SURVEYOR'S NOTES AND LEGEND

MATCH LINE SEE SHEET 18

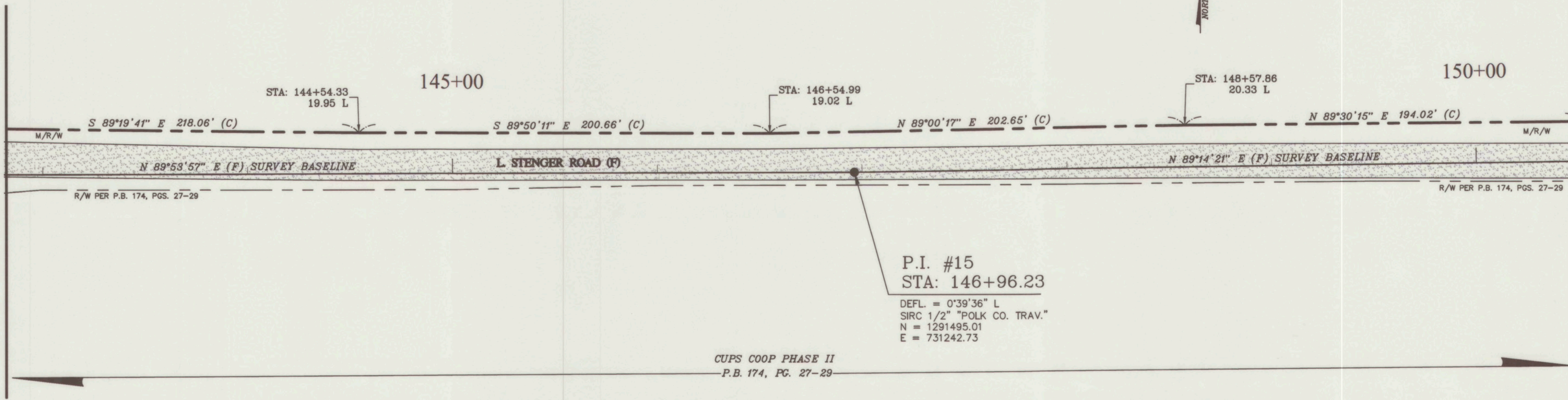


SECTION 12, TOWNSHIP 30 SOUTH, RANGE 25 EAST



MATCH LINE SEE SHEET 19

MATCH LINE SEE SHEET 21



STA: 144+54.33  
19.95 L

145+00

STA: 146+54.99  
19.02 L

STA: 148+57.86  
20.33 L

150+00

S 89°19'41" E 218.06' (C)

S 89°50'11" E 200.66' (C)

N 89°00'17" E 202.65' (C)

N 89°30'15" E 194.02' (C)

N 89°53'57" E (F) SURVEY BASELINE

L STENGER ROAD (F)

N 89°14'21" E (F) SURVEY BASELINE

R/W PER P.B. 174, PGS. 27-29

R/W PER P.B. 174, PGS. 27-29

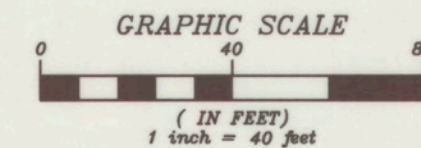
P.I. #15  
STA: 146+96.23  
DEFL. = 0°39'36" L  
SIRC 1/2" "POLK CO. TRAV."  
N = 1291495.01  
E = 731242.73

CUPS COOP PHASE II  
P.B. 174, PG. 27-29

SEE SHEET #1 FOR SURVEYOR'S NOTES AND LEGEND



SECTION 12, TOWNSHIP 30 SOUTH, RANGE 25 EAST



MATCH LINE SEE SHEET 20

MATCH LINE SEE SHEET 22

STA: 150+51.88  
19.43 L

N 89°21'21" E 190.39' (C)

M/R/W

STA: 152+42.27  
19.04 L

N 89°26'37" E 202.22' (C)

STA: 154+44.55  
18.24 L

N 89°41'24" E 210.25' (C)

155+00

STA: 156+54.78  
15.84 L

N 89°37'22" E 209.06' (C)

M/R/W

N 89°14'21" E (F) SURVEY BASELINE

L. STENGER ROAD (F)

N 89°02'08" E (F) SURVEY BASELINE

R/W PER P.B. 174, PGS. 27-29

R/W PER P.B. 174, PGS. 27-29

P.I. #16  
STA: 154+21.79

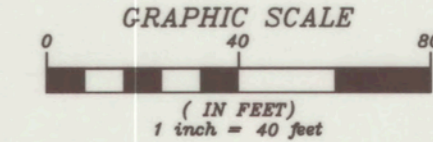
DEFL. = 00°12'13" L  
FIRC 5/8" "LB 364."  
N = 1291504.65  
E = 731968.22

CUPS COOP PHASE II  
P.B. 174, PG. 27-29

SEE SHEET #1 FOR SURVEYOR'S NOTES AND LEGEND



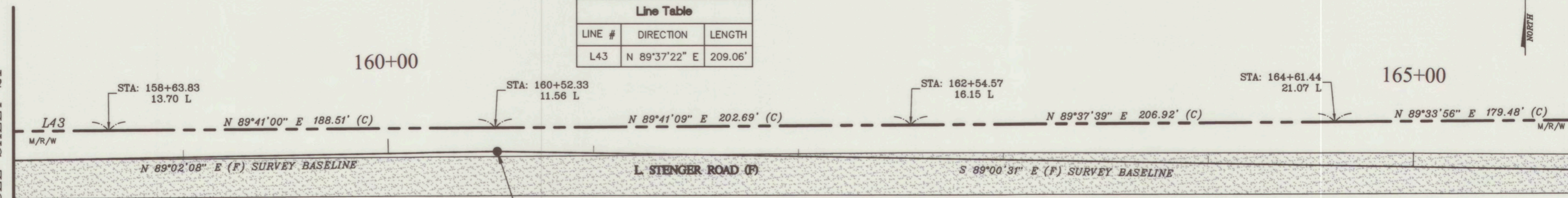
SECTION 12, TOWNSHIP 30 SOUTH, RANGE 25 EAST



Line Table		
LINE #	DIRECTION	LENGTH
L43	N 89°37'22" E	209.06'

160+00

165+00



R/W PER P.B. 174, PGS. 27-29

R/W PER P.B. 174, PGS. 27-29

P.I. #17  
 STA: 160+53.12

DEFL. = 01°57'21" R  
 SIRC 1/2" "POLK CO. TRAV."  
 N = 1291515.27  
 E = 732599.46

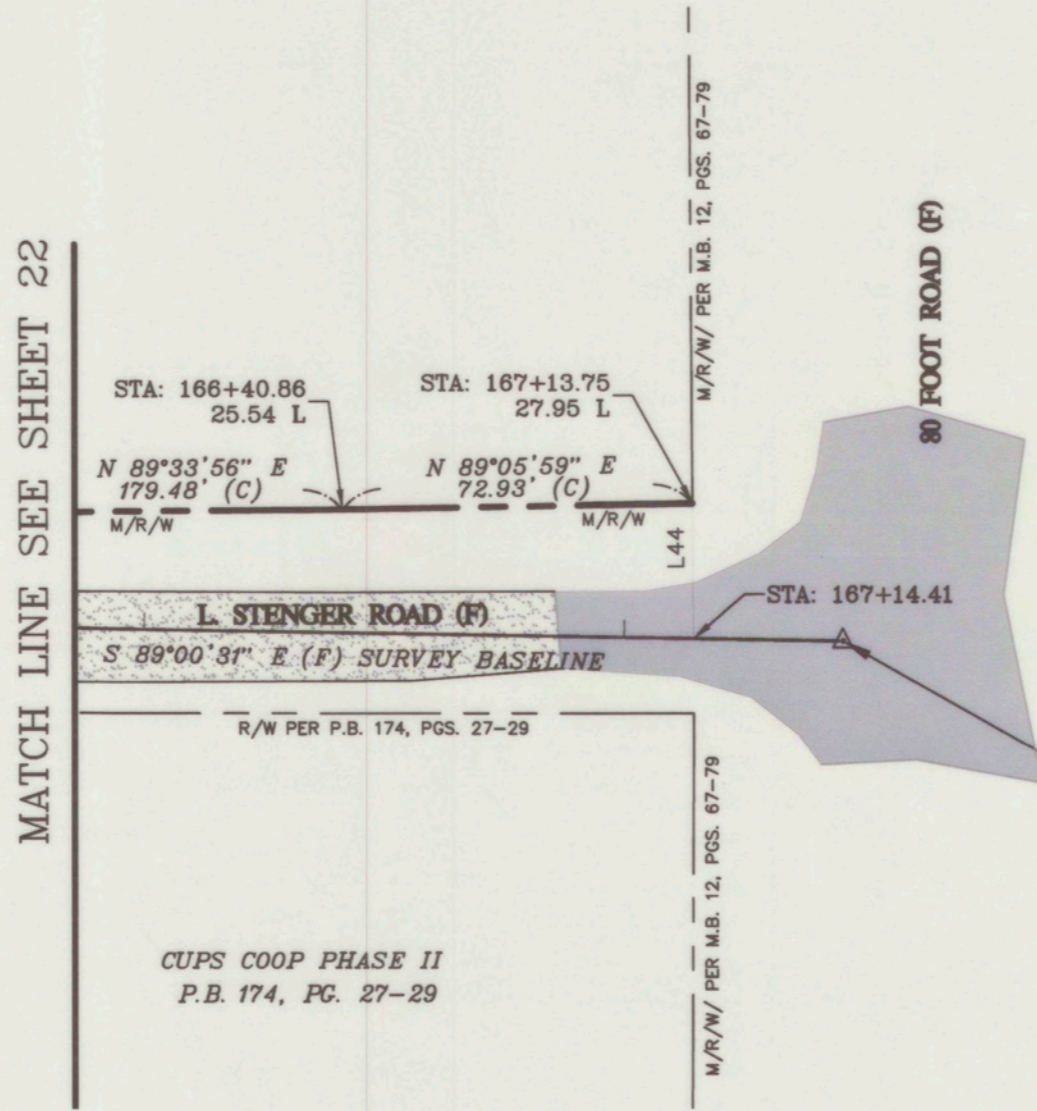
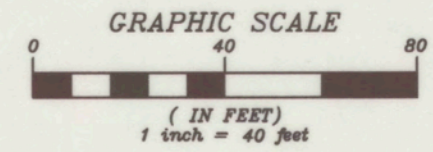
CUPS COOP PHASE II  
 P.B. 174, PG. 27-29

MATCH LINE SEE SHEET 21

MATCH LINE SEE SHEET 23

SEE SHEET #1 FOR SURVEYOR'S NOTES AND LEGEND





MATCH LINE SEE SHEET 22

Line Table		
LINE #	DIRECTION	LENGTH
L44	S 0°21'26" E	27.96'

END SURVEY  
 STA: 167+45.67  
 FRRS  
 N = 1291503.29  
 E = 733291.90

CUPS COOP PHASE II  
 P.B. 174, PG. 27-29

SEE SHEET #1 FOR SURVEYOR'S NOTES AND LEGEND