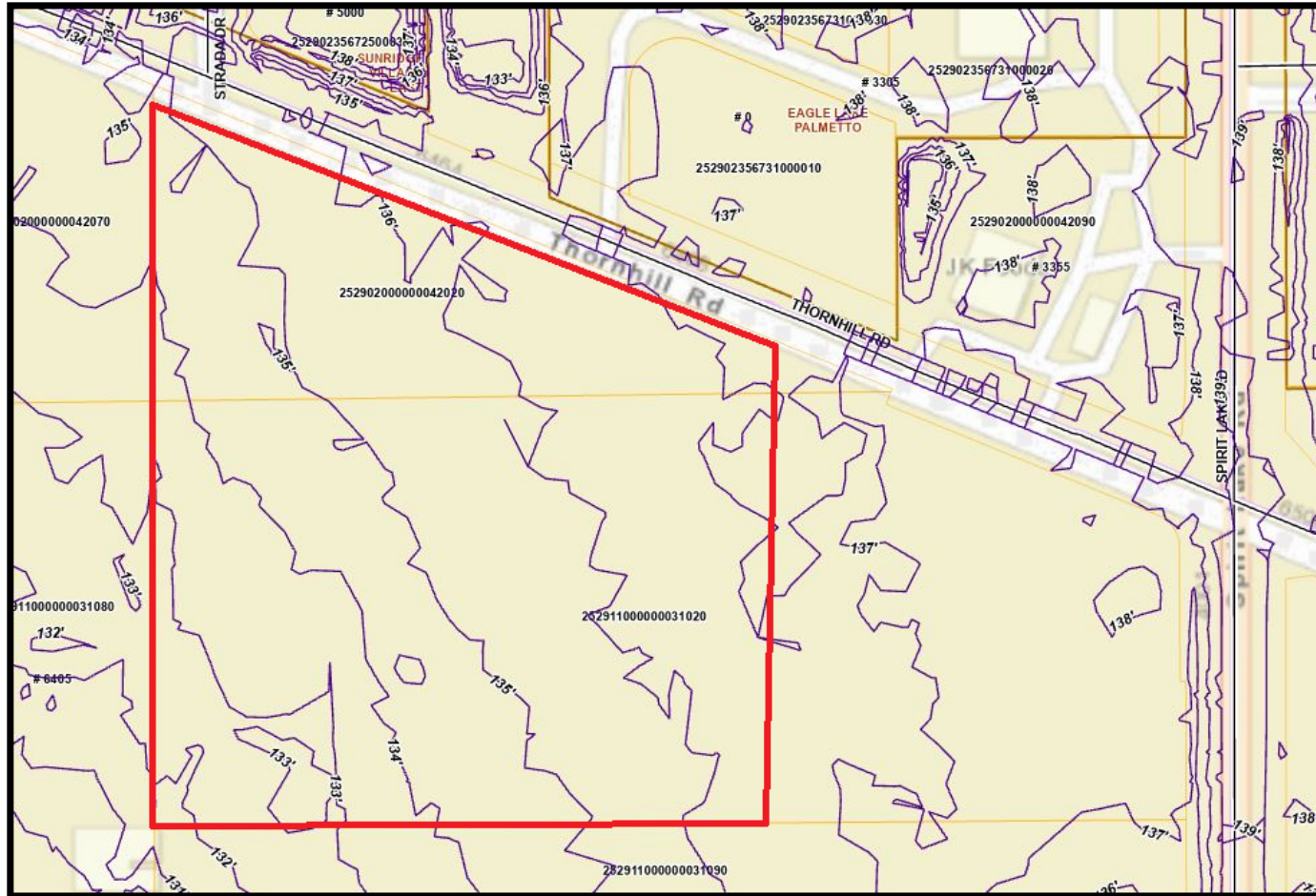
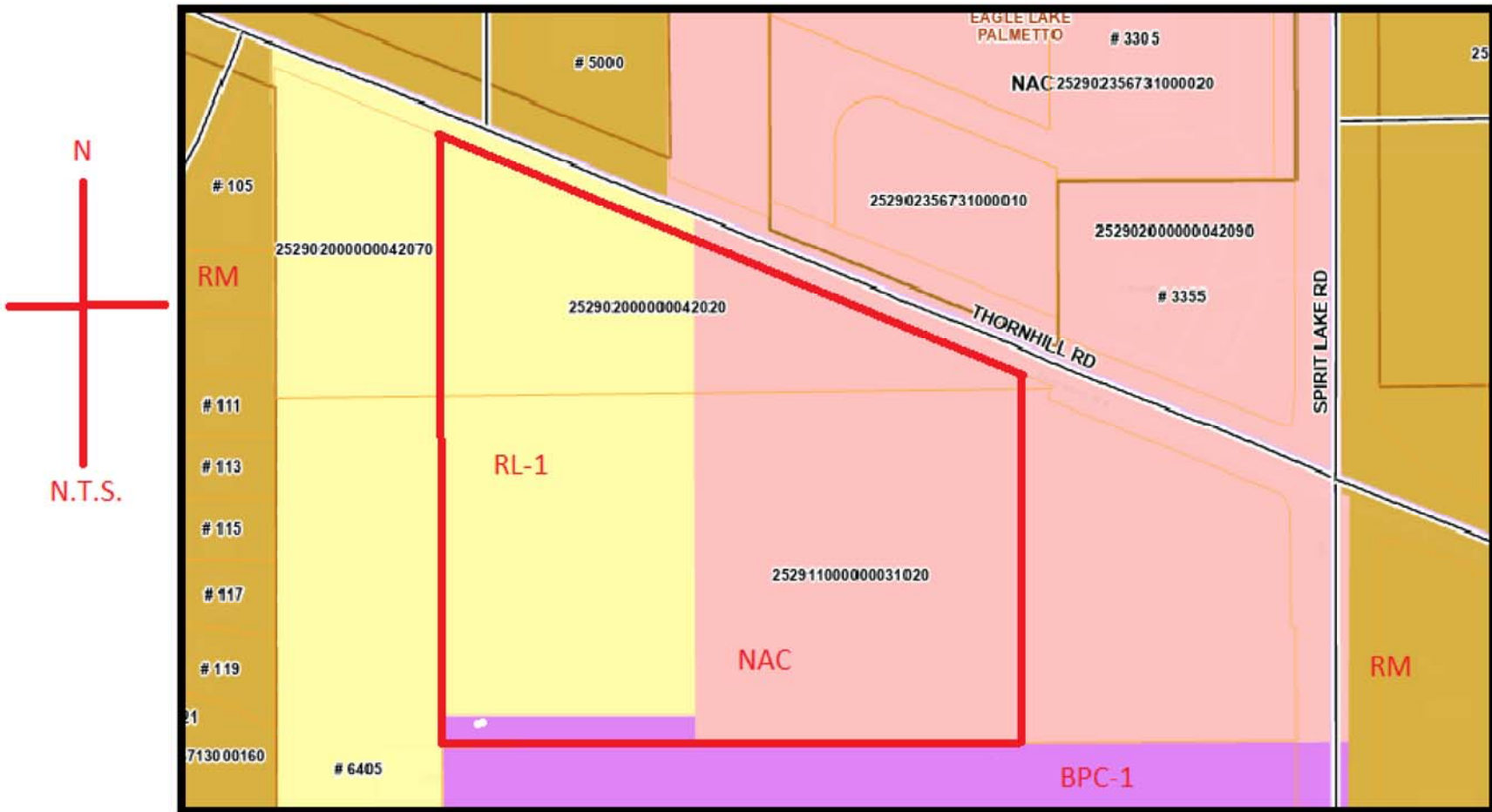
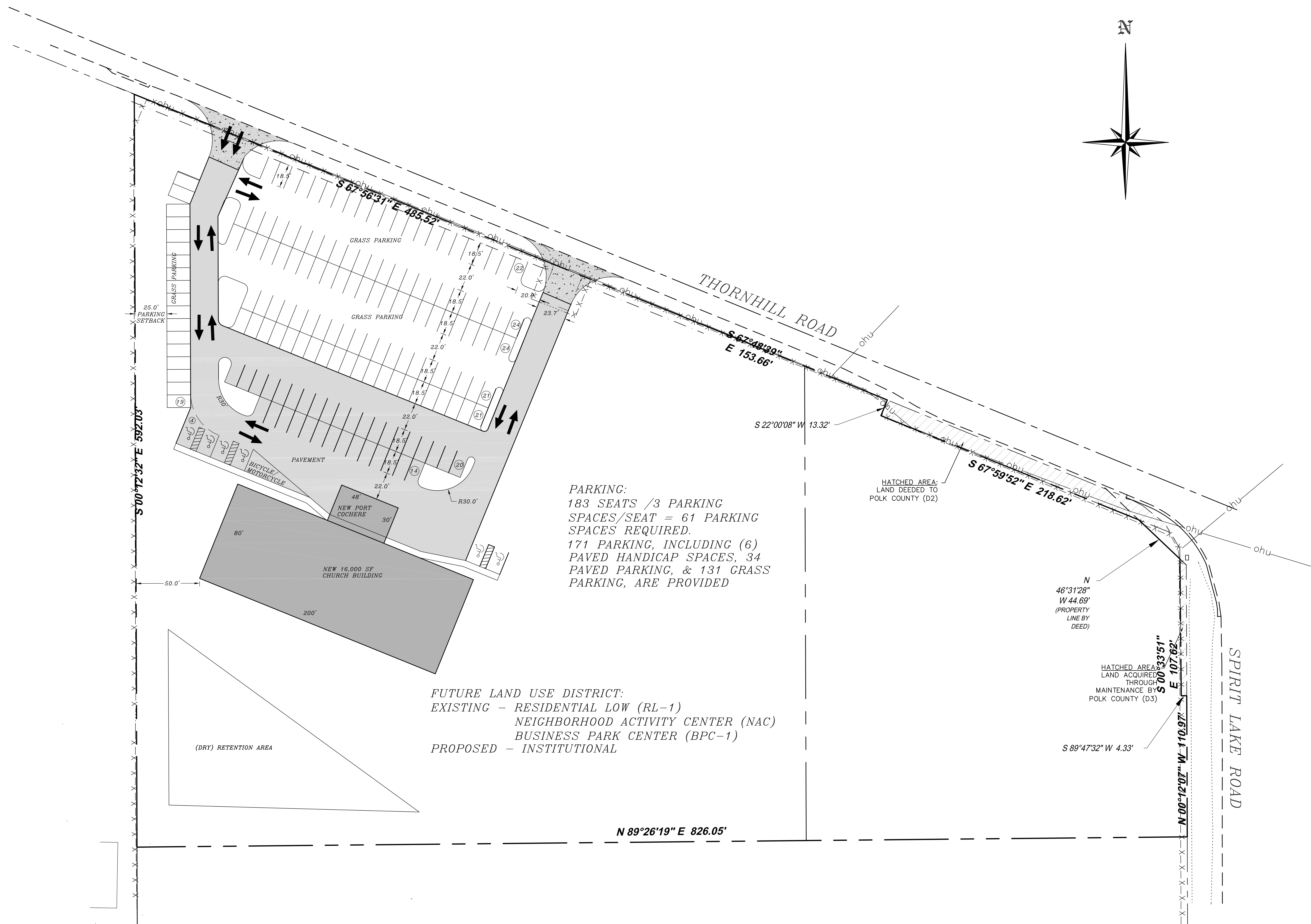
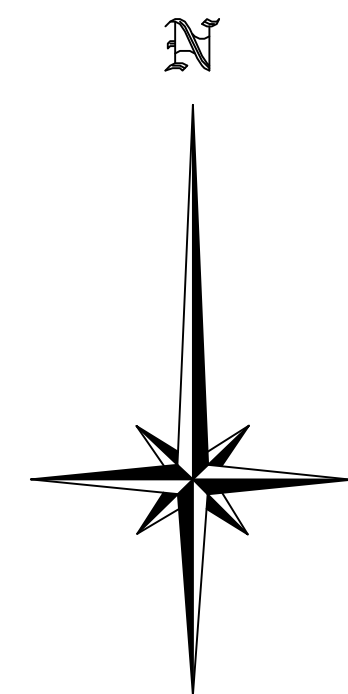


Map B: Topography Map
Project: Graceway Community Church



Map C: Future Land Use
Project: Graceway Community Church





PARKING:
183 SEATS / 3 PARKING SPACES/SEAT = 61 PARKING SPACES REQUIRED.
171 PARKING, INCLUDING (6) PAVED HANDICAP SPACES, 34 PAVED PARKING, & 131 GRASS PARKING, ARE PROVIDED

FUTURE LAND USE DISTRICT:
EXISTING - RESIDENTIAL LOW (RL-1)
NEIGHBORHOOD ACTIVITY CENTER (NAC)
BUSINESS PARK CENTER (BPC-1)
PROPOSED - INSTITUTIONAL

HATCHED AREA:
LAND DEEDED TO
POLK COUNTY (D2)

N 46°31'28"
W 44.69'
(PROPERTY
LINE BY
DEED)

HATCHED AREA
LAND ACQUIRED
THROUGH
MAINTENANCE BY
POLK COUNTY (D3)

S 00°12'32" E 592.03'

25.0' PARKING SETBACK

(DRY) RETENTION AREA

N 89°26'19" E 826.05'

THORNHILL ROAD

SPIRIT LAKE ROAD

S 67°48'39" E 153.66'

S 67°59'52" E 218.62'

S 00°33'51" E 107.82'

S 89°47'32" W 4.33'

N 00°12'07" W 110.97'

S 67°56'37" E 485.52'

GRASS PARKING

GRASS PARKING

PAVEMENT

NEW 16,000 SF CHURCH BUILDING

NEW PORT COCHERE

BICYCLE MOTORCYCLE

GRAVEL PARKING

(19)

(20)

(21)

(22)

(23)

(24)

(25)

(26)

(27)

(28)

(29)

(30)

(31)

(32)

(33)

(34)

(35)

(36)

(37)

(38)

(39)

(40)

(41)

(42)

(43)

(44)

(45)

(46)

(47)

(48)

(49)

(50)

(51)

(52)

(53)

(54)

(55)

(56)

(57)

(58)

(59)

(60)

(61)

(62)

(63)

(64)

(65)

(66)

(67)

(68)

(69)

(70)

(71)

(72)

(73)

(74)

(75)

(76)

(77)

(78)

(79)

(80)

(81)

(82)

(83)

(84)

(85)

(86)

(87)

(88)

(89)

(90)

(91)

(92)

(93)

(94)

(95)

(96)

(97)

(98)

(99)

(100)