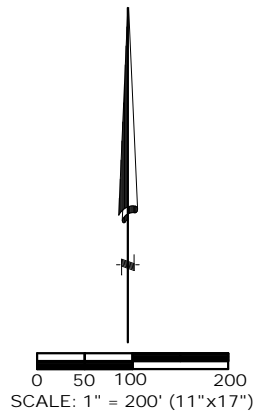
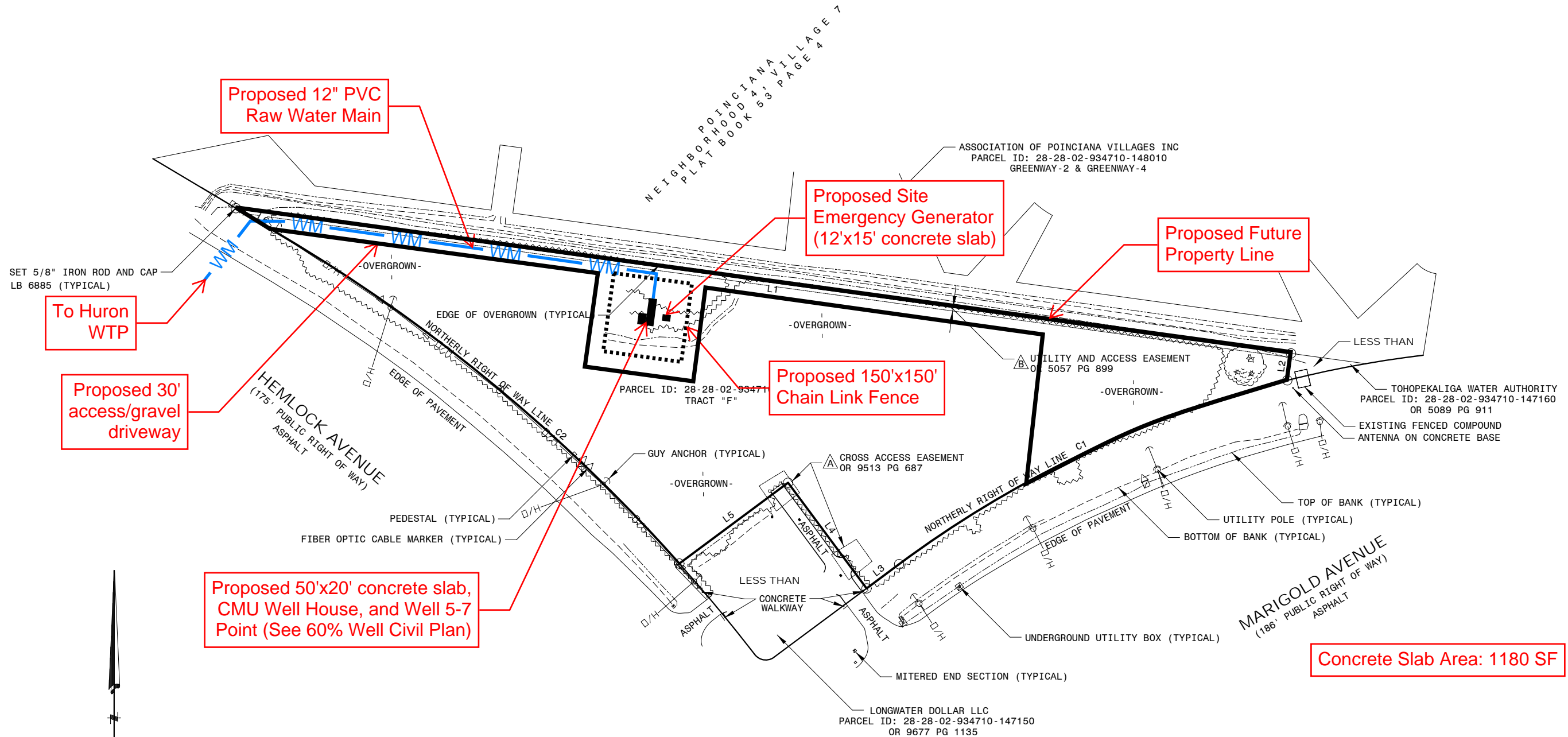


LINE DATA (FIELD)		
LINE	BEARING	DISTANCE
L1	S 82°10'02" E	1942.23'
L2	S 07°49'58" W	49.56'
L3	S 53°23'07" W	73.98'
L4	N 36°37'17" W	240.00'
L5	S 53°22'43" W	247.00'
L6	N 59°10'47" W	102.53'

LINE DATA (RECORD)		
LINE	BEARING	DISTANCE
L1	S 81°42'51" E	1942.23' (C)
L2	N 08°17'09" E	49.56' (D)
L3	S 53°49'54" W	73.98' (D)
L4	S 36°10'06" E	240.00' (D)
L5	N 53°49'54" E	247.00' (D)
L6	N 58°43'36" W	102.53' (P)

CURVE DATA (FIELD)					
CURVE	RADIUS	ARC LENGTH	CHORD LENGTH	CHORD BEARING	DELTA ANGLE
C1	2002.86'	788.33'	783.26'	S 64°39'16" W	22°33'07"
C2	3075.00'	938.44'	934.79'	N 50°26'13" W	17°29'08"

CURVE DATA (RECORD)					
CURVE	RADIUS	ARC LENGTH	CHORD LENGTH	CHORD BEARING	DELTA ANGLE
C1	2002.86' (P)	788.33' (C)	783.26' (C)	S 65°06'27" W(C)	22°33'07" (C)
C2	3075.00' (P)	938.44' (C)	934.79' (C)	N 49°59'02" W(C)	17°29'08" (C)



Proposed 50'x20' concrete slab, CMU Well House, and Well 5-7 Point (See 60% Well Civil Plan)

Concrete Slab Area: 1180 SF

REVISIONS

DATE	BY	DESCRIPTION	DATE	BY	DESCRIPTION	DATE	BY	DESCRIPTION

ADVANCED LAND SURVEYING AND MAPPING, INC.
 371 BRIGHTWATERS DRIVE COCOA BEACH, FLORIDA 32931
 PH: (407) 509-2305

BOUNDARY SURVEY
 PREPARED FOR
TOHOPEKALIGA WATER AUTHORITY
 TOHO PROJECT HURON 5-7
 A PORTION OF SECTION 2, TOWNSHIP 28 SOUTH, RANGE 28 EAST
 POLK COUNTY, FLORIDA

DRAWN	S. PETRAROLI
FIELD DATE	AUGUST 27, 2025
FIELD BOOK	PRINT
SCALE	1" = 200'
PROJECT NO.	X
FILE NAME	HURON 5-7.DWG
SHEET	2 OF 2

