

## RESOLUTION NO.: \_\_\_\_\_

**WHEREAS** the Polk County Board of County Commissioners, on November 20, 2018, approved the Subdivision Parking Restriction Policy, which allows a subdivision homeowners association to propose parking restrictions along one side of the street on roadways within its subdivision, and

**WHEREAS** the High Pointe North Homeowners Association has proposed parking restrictions along the following County-maintained roads located in S-10, T-27S, R-23E:

Adele Road (Road Number 731021) from Peak Avenue to Peak Avenue, and

Boots Road (Road Number 731020) from Adele Road to Adele Road, and

Peak Avenue (Road Number 731023) from Banana Road to Adele Road, and

Porter Street (Road Number 731018) from Adele Road to Harrison Road, and

**WHEREAS** a field visit verified that no engineering issues exist that would prevent the restriction of vehicular parking in areas proposed by the homeowners association, and

**WHEREAS** the County sent ballots to all subdivision homeowners, requesting their vote, and

**WHEREAS** less than 33% of homeowners returned ballots to the County indicating their opposition to the proposed parking restrictions, and

**WHEREAS** under the laws of the State of Florida, the Board of County Commissioners is vested with the authority to restrict parking on County maintained roads,

**NOW, THEREFORE, BE IT RESOLVED** that the Polk County Roads & Drainage Division is herewith directed to cause Adele Road to be posted “No Parking This Side of Street” on the south and east sides, from Peak Avenue (south intersection) to Mile Post 0.23, on the north and west sides, from Mile Post 0.23 to Mile Post 0.50, and on the south side, from Mile Post 0.50 to Peak Avenue (south intersection); and Boots Road to be posted “No Parking This Side of Street” on the north and east sides, from Adele Road to Adele Road; and Peak Avenue to be posted “No Parking This Side of Street” on the west side, from Adele Road to Adele Road; and Porter Street to be posted “No Parking This Side of Street” on the south side, from Adele Road to Boots Road.

DATED this 5<sup>th</sup> day of August 2025.

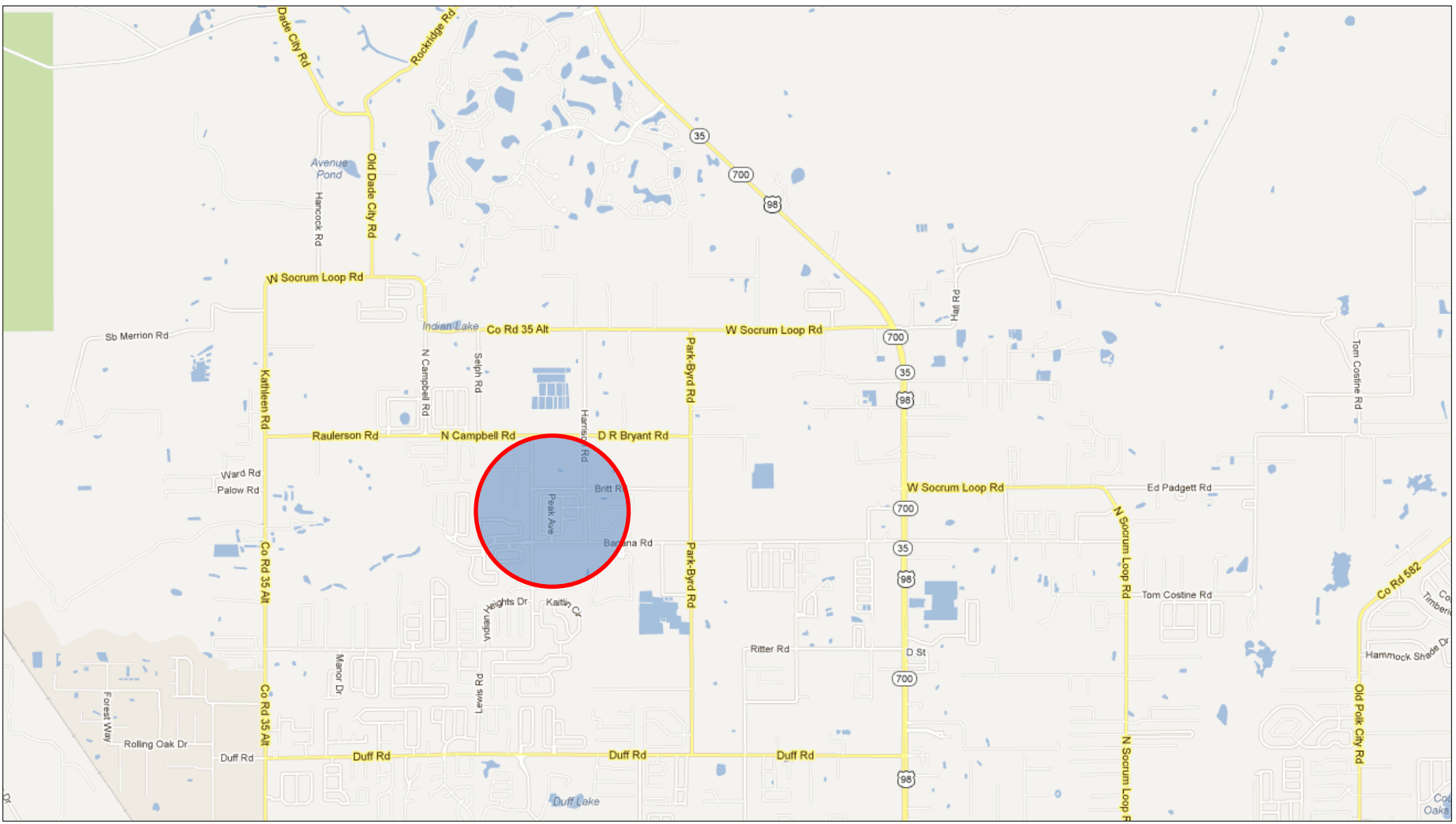


N.T.S.

# High Point North (Lakeland Area)

Request for Parking Restrictions

Vicinity Map





— Areas of Proposed Parking Restrictions

## HIGH POINT NORTH

