

RESOLUTION NO.: _____

WHEREAS the Board of County Commissioners has a policy to allow for the placement of traffic calming devices upon certain qualifying roads, and

WHEREAS the Polk County Roads & Drainage Division was requested to install traffic calming devices on the following County-maintained Urban Collector road:

Eastside Drive South (Road Number 842149); from State Road 659 (Combee Road) to County Road 542 (Main Street East). Located in S-21, T-28S, R-24E, and

WHEREAS speed studies were performed in accordance with the procedures established by the State of Florida Department of Transportation, and said studies verified that Eastside Drive South qualifies for traffic calming devices based on 85th Percentile speed and traffic volume, and

WHEREAS homeowners along Eastside Drive South were provided with ballot forms, and a sufficient number of said forms were either returned in support of the installation of traffic calming devices, or were not returned and counted as being in support of the installation of traffic calming devices, in accordance with Board policy requirements,

NOW, THEREFORE, BE IT RESOLVED that the Polk County Roads & Drainage Division is herewith directed to cause Eastside Drive South to have three traffic calming devices installed between Burtis Street and County Road 542 (Main Street East).

Adopted in Regular Session duly assembled this 7th day of July 2026.

Attest:
Stacy M. Butterfield, Clerk

Board of County Commissioners
Polk County, Florida

By: _____
Deputy Clerk

By: _____
Martha Santiago, Ed.D., Chair

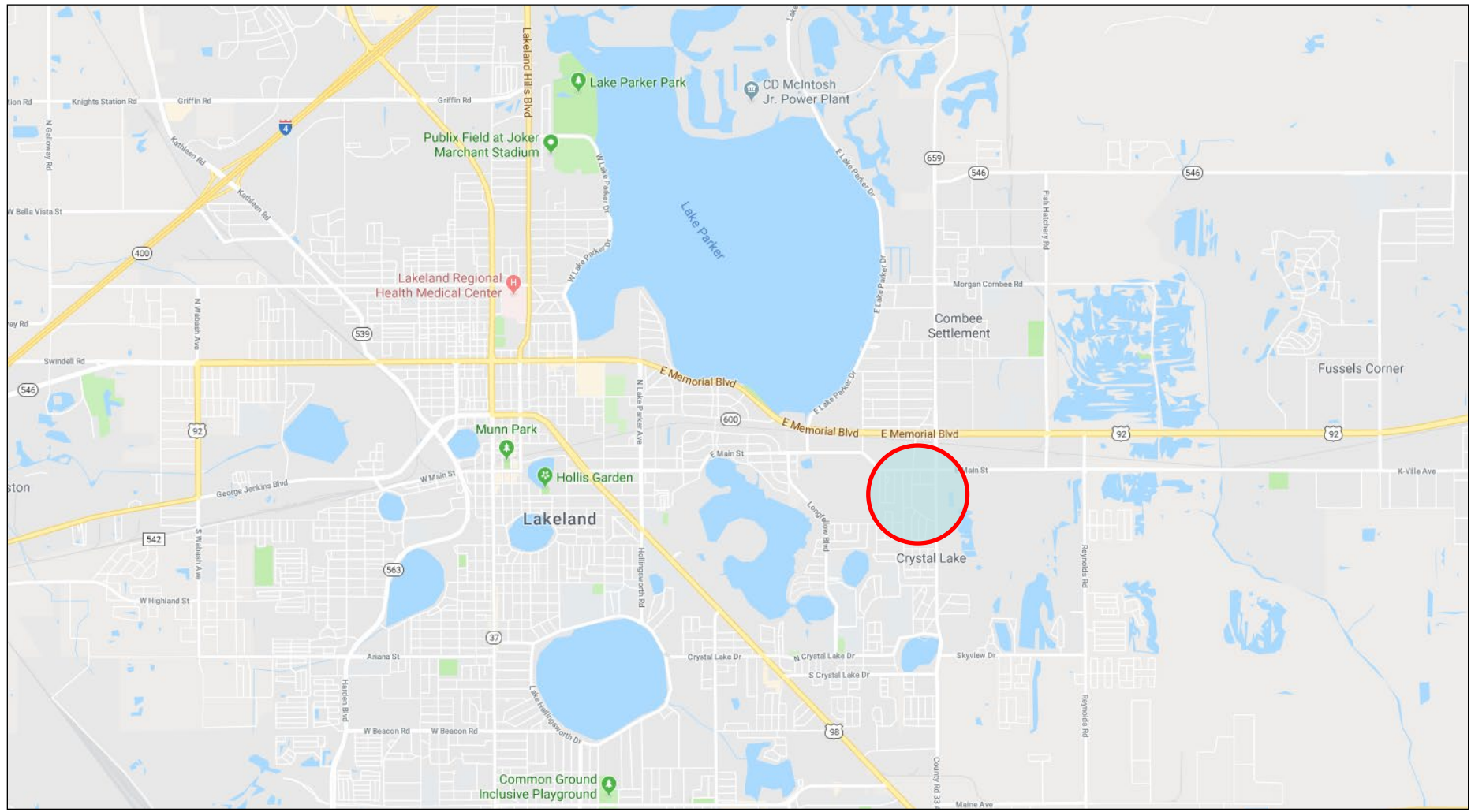


N.T.S.

Eastside Dr S (Lakeland Area)

Request for Speed Humps

Vicinity Map



Eastside Dr S (Lakeland Area)

Traffic Calming Plan

