

Reclamation Notes:

- The reclaimed land will be compatible with the land use designated for the area by the Polk County Comprehensive Plan.
- The reclaimed mine site will provide for a drainage pattern similar to the pre-mining drainage of the area as required by Chapter 6, regulating surface water management.
- Reclamation will commence after completion of mining.
- Reclamation will be consistent with the reclamation standards set forth in Chapter 62C 39 F.A.C.
- Reclamation will be initiated no later than one year after the calendar year in which mining operations cease and will be completed no more than three years after mining is completed at the facility.
- All temporary buildings, pipelines, and other man-made structures will be removed with the exception of those that are of sound construction with potential uses that are compatible with the reclamation goals.
- Upon completion of excavation, the reclamation of the excavation area will be by way of sloping the lake shorelines and contouring the upland areas, in some cases using the overburden and/or unmarketable sand, to achieve the required final grades.
- The maximum slope of reclaimed land will be 4:1 to normal water elevation (normal pool), and then 4:1 from normal pool to a water depth of five feet.
- Upland areas disturbed by mining operations will be revegetated and maintained until a vegetative cover is fully established. Disturbed areas will be stabilized by sodding with Bahia grass to prevent erosion and damage from sediment and runoff by stabilizing the soil surface, to reduce the production of dust and mud associated with bare soil surfaces, and to stabilize drainageways where concentrated overland flow will occur.
- The slopes of the reclaimed lakes will be vegetated with native species which will include planting of native wet land vegetation or natural regeneration of wetland plant species.

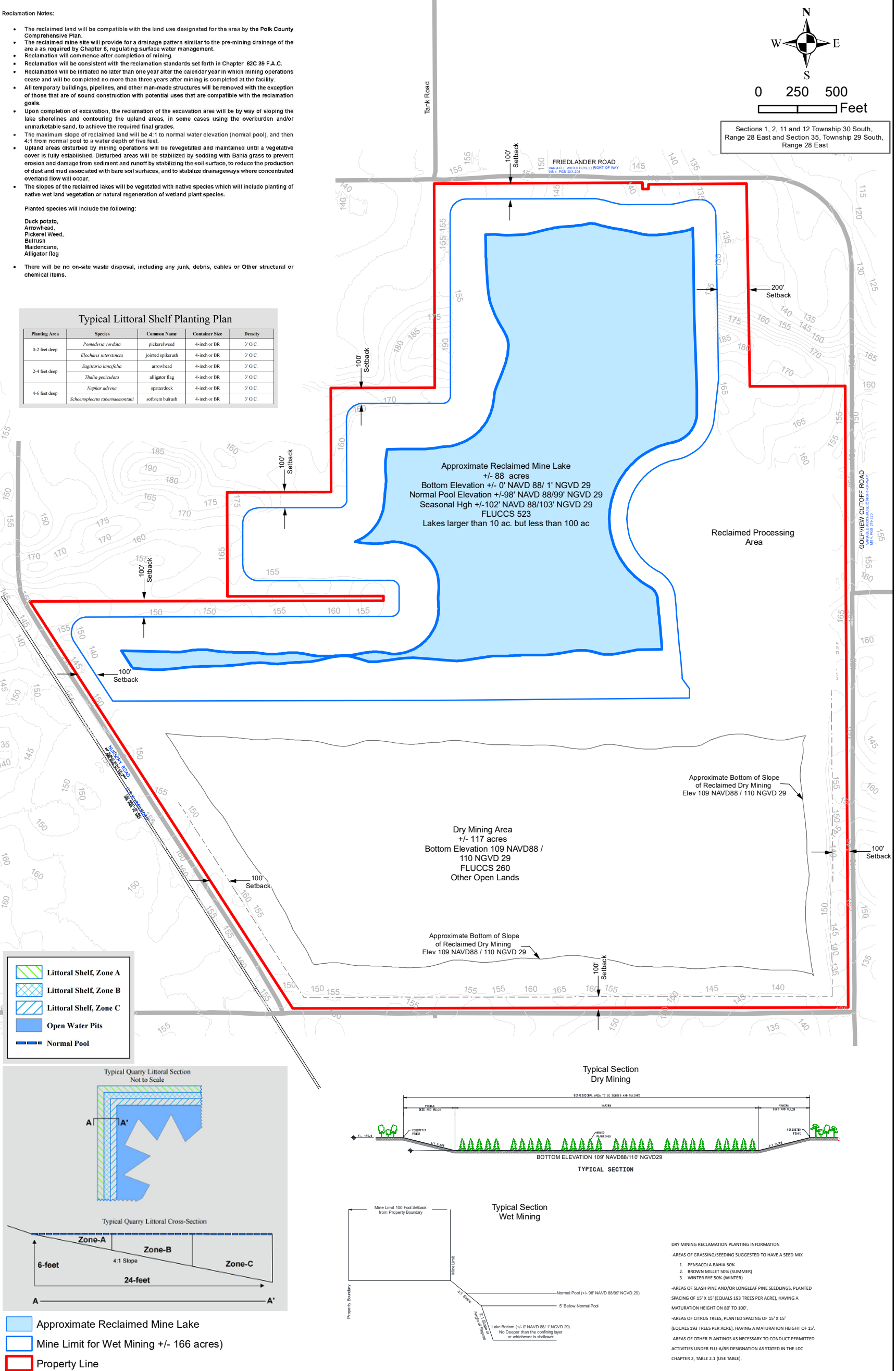
Planted species will include the following:

Duck potato,
Arrowhead,
Pickerel Weed,
Bulrush
Maidencane,
Alligator flag

- There will be no on-site waste disposal, including any junk, debris, cables or Other structural or chemical items.

Typical Littoral Shelf Planting Plan

Planting Area	Species	Common Name	Container Size	Density
0-2 feet deep	<i>Potamogeton nodosus</i>	pickersweed	4-inch or BR	3' O.C.
	<i>Eichhornia crassipes</i>	jointed spikerush	4-inch or BR	3' O.C.
	<i>Sagittaria latifolia</i>	arrowhead	4-inch or BR	3' O.C.
2-4 feet deep	<i>Thalia geniculata</i>	alligator flag	4-inch or BR	3' O.C.
	<i>Najas advena</i>	spatterdock	4-inch or BR	3' O.C.
4-6 feet deep	<i>Scheuchzeria palustris</i>	softstem bulrush	4-inch or BR	3' O.C.



THE COLINAS GROUP, INC.
Engineering and Environmental Consultants

2031 E. Edgewood Drive Suite 5
Lakeland, Florida 33803
863-669-9141
www.thecolinasgroup.com

Drawn By:
M. Mouncey

Date:
11/14/2025

Figure 10 Reclamation Plan Highland Sand Extension

Polk County, Florida

QUIKRETE
What America's Made Of®
CONSTRUCTION MATERIALS
5 Concourse Parkway
Suite 1900
Atlanta, GA 30328 |
www.quikrete.com