

## RESOLUTION NO.: \_\_\_\_\_

**WHEREAS** the Board of County Commissioners has a policy to allow for the placement of traffic calming devices upon certain qualifying roads, and

**WHEREAS** the Polk County Roads & Drainage Division was requested to install traffic calming devices on the following County-maintained Local Residential road:

Wheeler Road North (Road Number 732115); from Kathleen Pines to Wheeler Road West. Located in S-21, T-27S, R-23E, and

**WHEREAS** speed studies were performed in accordance with the procedures established by the State of Florida Department of Transportation, and said studies verified that Wheeler Road North qualifies for traffic calming devices based on 85<sup>th</sup> Percentile speed and traffic volume, and

**WHEREAS** homeowners along Wheeler Road North were provided with ballot forms, and a sufficient number of said forms were either returned in support of the installation of traffic calming devices, or were not returned and counted as being in support of the installation of traffic calming devices, in accordance with Board policy requirements,

**NOW, THEREFORE, BE IT RESOLVED** that the Polk County Roads & Drainage Division is herewith directed to cause Wheeler Road North to have two traffic calming devices installed between Kathleen Pines and Wheeler Road West.

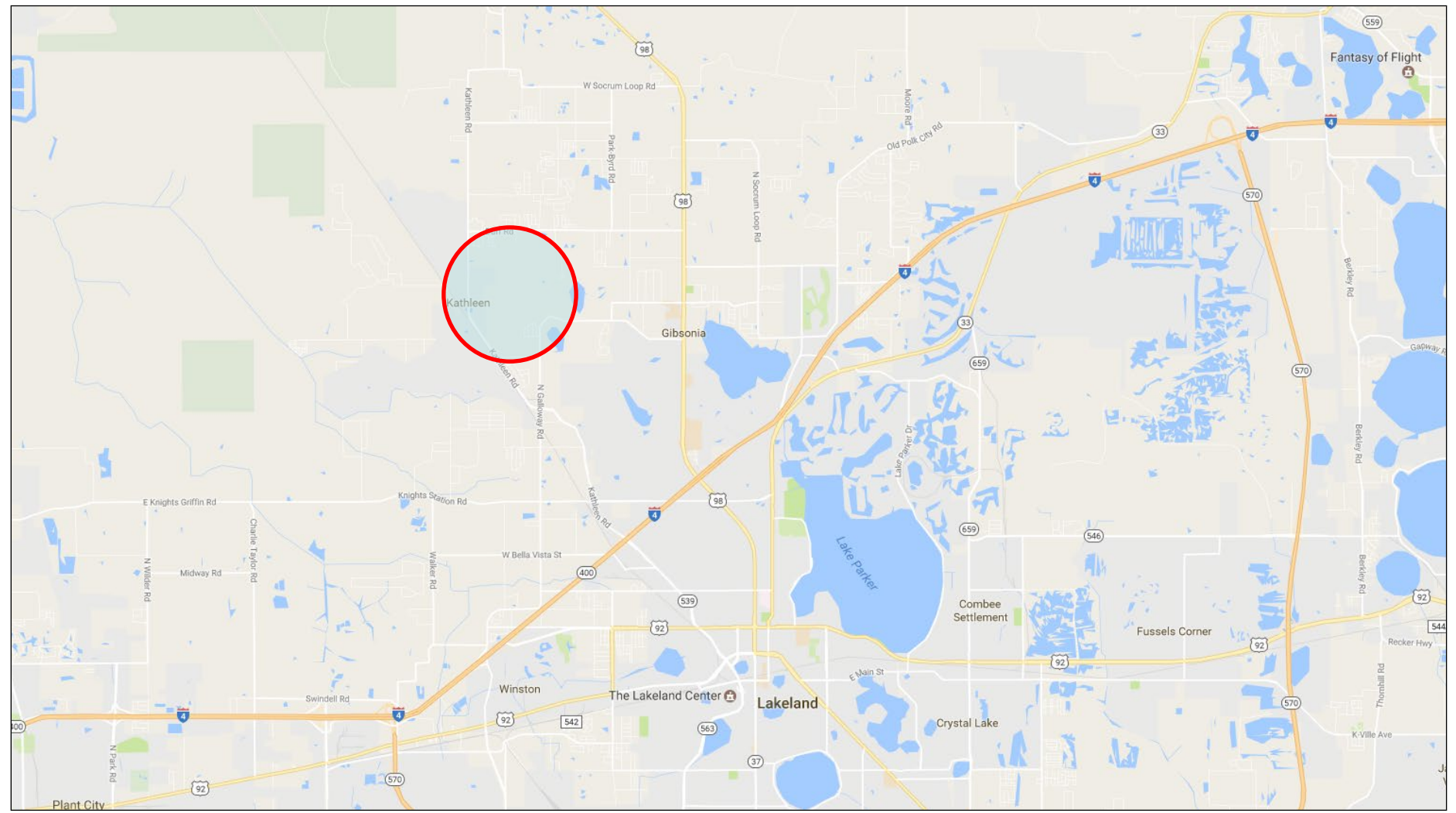
DATED this 2<sup>nd</sup> day of September 2025.



N.T.S.

# Wheeler Rd N (Lakeland Area)

Request for Traffic Calming Devices







# Wheeler Rd N (Lakeland Area)

## Traffic Calming Plan

