

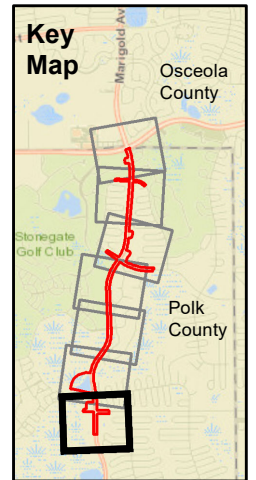
# Marigold Ave Widening Polk County, FL

Name	Acres
OSW 1A	0.208
OSW 1B	0.15
OSW 2	0.06
OSW 3A	0.029
OSW 3B	0.03
OSW 4A	0.03
OSW 4B	0.1
OSW 5	0.41
OSW 6	0.82
OSW 7	0.9
OSW 8	0.64
OSW 9	0.64
OSW 10A	0.07
OSW 10B	0.21
OSW 10C	0.63
OSW 10D	0.12
OSW 10E	0.037
OSW 10F	0.37
OSW 10G	0.114
OSW 11A	0.023
OSW 11B	0.016
OSW 11C	0.014
OSW 11D	0.06
OSW 11E	0.79
OSW 11F	0.18
OSW 12A	0.14
OSW 12B	0.07
<b>Total OSW</b>	<b>6.861</b>
Wetland 1	0
Wetland 2	0.02
Wetland 3	0.11
Wetland 4	1.08
Wetland 5	0.19
Wetland 7	0.01
Wetland 8	3.61
<b>Total Wetlands</b>	<b>5.02</b>
Wet 1 Secondary	0.14
Wet 2 Secondary	0.19
Wet 3 Secondary	0.48
Wet 4 Secondary	0
Wet 5 Secondary	0.78
Wet 6 Secondary	0.62
Wet 7 Secondary	0.22
Wet 8 Secondary	1.07
Wet 9 Secondary	0.1
<b>Total Secondary</b>	<b>3.6</b>
<b>Total</b>	<b>15.48</b>



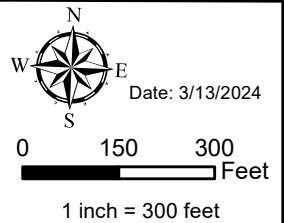
## Legend

- Project Area (75.60 ac)
- OSW
- Wetland
- Wetland Secondary



**Figure 5  
Wetland  
Impact Map**

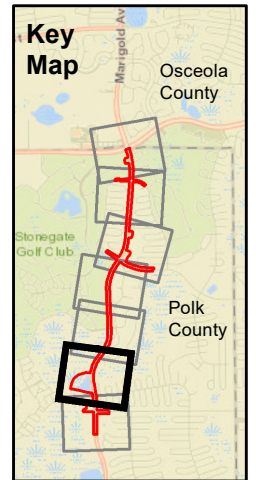
Page 1 of 7



# Marigold Ave Widening Polk County, FL

## Legend

- Project Area (75.60 ac)
- Conservation Easement
- Wetland Impacts**
- OSW
- Wetland
- Wetland Secondary



**Figure 5  
Wetland  
Impact Map**

Page 2 of 7

Date: 3/13/2024

0 150 300 Feet

1 inch = 300 feet

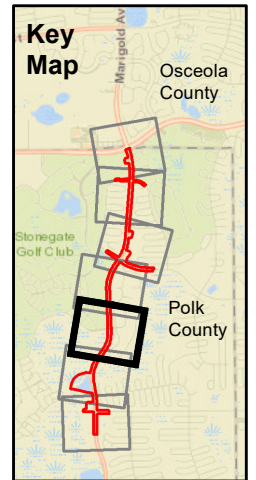
Name	Acres
OSW 1A	0.208
OSW 1B	0.15
OSW 2	0.06
OSW 3A	0.029
OSW 3B	0.03
OSW 4A	0.03
OSW 4B	0.1
OSW 5	0.41
OSW 6	0.82
OSW 7	0.9
OSW 8	0.64
OSW 9	0.64
OSW 10A	0.07
OSW 10B	0.21
OSW 10C	0.63
OSW 10D	0.12
OSW 10E	0.037
OSW 10F	0.37
OSW 10G	0.114
OSW 11A	0.023
OSW 11B	0.016
OSW 11C	0.014
OSW 11D	0.06
OSW 11E	0.79
OSW 11F	0.18
OSW 12A	0.14
OSW 12B	0.07
<b>Total OSW</b>	<b>6.861</b>
Wetland 1	0
Wetland 2	0.02
Wetland 3	0.11
Wetland 4	1.08
Wetland 5	0.19
Wetland 7	0.01
Wetland 8	3.61
<b>Total Wetlands</b>	<b>5.02</b>
Wet 1 Secondary	0.14
Wet 2 Secondary	0.19
Wet 3 Secondary	0.48
Wet 4 Secondary	0
Wet 5 Secondary	0.78
Wet 6 Secondary	0.62
Wet 7 Secondary	0.22
Wet 8 Secondary	1.07
Wet 9 Secondary	0.1
<b>Total Secondary</b>	<b>3.6</b>
<b>Total</b>	<b>15.48</b>



# Marigold Ave Widening Polk County, FL

## Legend

- Project Area (75.60 ac)
- Conservation Easement
- Wetland Impacts**
- OSW
- Wetland
- Wetland Secondary



### Figure 5 Wetland Impact Map

Page 3 of 7

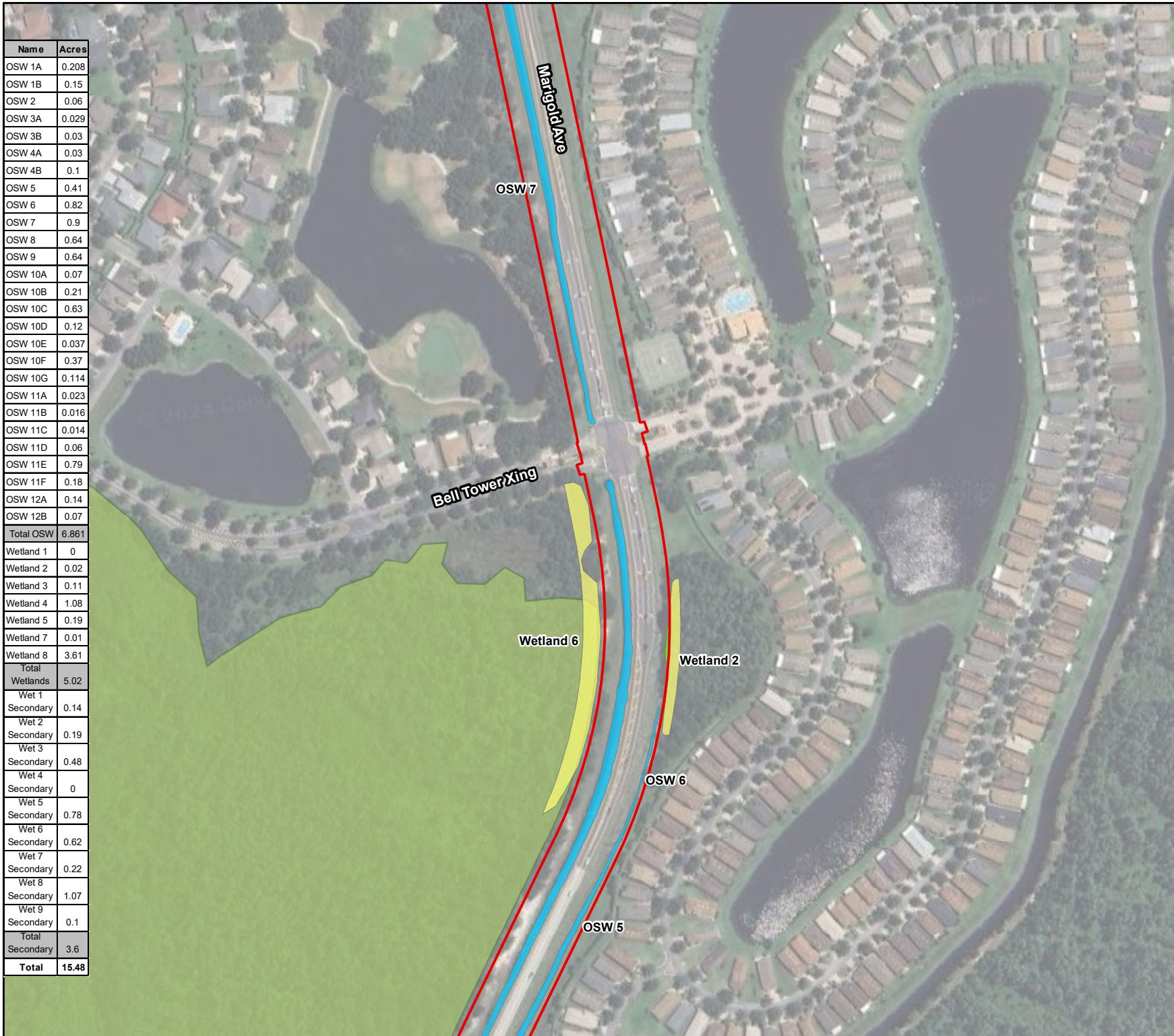
North Arrow

Date: 3/13/2024

0 150 300 Feet

1 inch = 300 feet

Name	Acres
OSW 1A	0.208
OSW 1B	0.15
OSW 2	0.06
OSW 3A	0.029
OSW 3B	0.03
OSW 4A	0.03
OSW 4B	0.1
OSW 5	0.41
OSW 6	0.82
OSW 7	0.9
OSW 8	0.64
OSW 9	0.64
OSW 10A	0.07
OSW 10B	0.21
OSW 10C	0.63
OSW 10D	0.12
OSW 10E	0.037
OSW 10F	0.37
OSW 10G	0.114
OSW 11A	0.023
OSW 11B	0.016
OSW 11C	0.014
OSW 11D	0.06
OSW 11E	0.79
OSW 11F	0.18
OSW 12A	0.14
OSW 12B	0.07
<b>Total OSW</b>	<b>6.861</b>
Wetland 1	0
Wetland 2	0.02
Wetland 3	0.11
Wetland 4	1.08
Wetland 5	0.19
Wetland 7	0.01
Wetland 8	3.61
<b>Total Wetlands</b>	<b>5.02</b>
Wet 1 Secondary	0.14
Wet 2 Secondary	0.19
Wet 3 Secondary	0.48
Wet 4 Secondary	0
Wet 5 Secondary	0.78
Wet 6 Secondary	0.62
Wet 7 Secondary	0.22
Wet 8 Secondary	1.07
Wet 9 Secondary	0.1
<b>Total Secondary</b>	<b>3.6</b>
<b>Total</b>	<b>15.48</b>

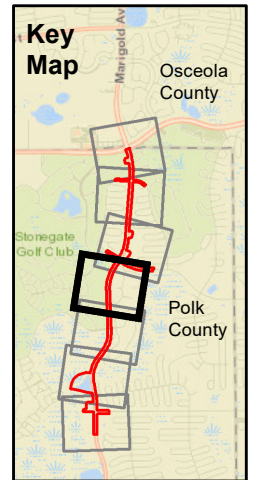


# Marigold Ave Widening Polk County, FL

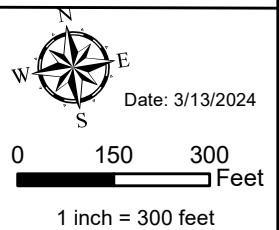
Name	Acres
OSW 1A	0.208
OSW 1B	0.15
OSW 2	0.06
OSW 3A	0.029
OSW 3B	0.03
OSW 4A	0.03
OSW 4B	0.1
OSW 5	0.41
OSW 6	0.82
OSW 7	0.9
OSW 8	0.64
OSW 9	0.64
OSW 10A	0.07
OSW 10B	0.21
OSW 10C	0.63
OSW 10D	0.12
OSW 10E	0.037
OSW 10F	0.37
OSW 10G	0.114
OSW 11A	0.023
OSW 11B	0.016
OSW 11C	0.014
OSW 11D	0.06
OSW 11E	0.79
OSW 11F	0.18
OSW 12A	0.14
OSW 12B	0.07
<b>Total OSW</b>	<b>6.861</b>
Wetland 1	0
Wetland 2	0.02
Wetland 3	0.11
Wetland 4	1.08
Wetland 5	0.19
Wetland 7	0.01
Wetland 8	3.61
<b>Total Wetlands</b>	<b>5.02</b>
Wet 1 Secondary	0.14
Wet 2 Secondary	0.19
Wet 3 Secondary	0.48
Wet 4 Secondary	0
Wet 5 Secondary	0.78
Wet 6 Secondary	0.62
Wet 7 Secondary	0.22
Wet 8 Secondary	1.07
Wet 9 Secondary	0.1
<b>Total Secondary</b>	<b>3.6</b>
<b>Total</b>	<b>15.48</b>



- Legend**
- Project Area (75.60 ac)
  - Conservation Easement
- Wetland Impacts**
- OSW
  - Wetland
  - Wetland Secondary



**Figure 5  
Wetland  
Impact Map**

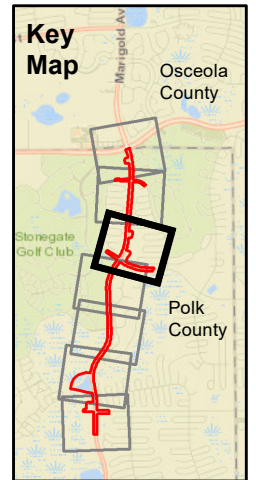


# Marigold Ave Widening Polk County, FL

Name	Acres
OSW 1A	0.208
OSW 1B	0.15
OSW 2	0.06
OSW 3A	0.029
OSW 3B	0.03
OSW 4A	0.03
OSW 4B	0.1
OSW 5	0.41
OSW 6	0.82
OSW 7	0.9
OSW 8	0.64
OSW 9	0.64
OSW 10A	0.07
OSW 10B	0.21
OSW 10C	0.63
OSW 10D	0.12
OSW 10E	0.037
OSW 10F	0.37
OSW 10G	0.114
OSW 11A	0.023
OSW 11B	0.016
OSW 11C	0.014
OSW 11D	0.06
OSW 11E	0.79
OSW 11F	0.18
OSW 12A	0.14
OSW 12B	0.07
<b>Total OSW</b>	<b>6.861</b>
Wetland 1	0
Wetland 2	0.02
Wetland 3	0.11
Wetland 4	1.08
Wetland 5	0.19
Wetland 7	0.01
Wetland 8	3.61
<b>Total Wetlands</b>	<b>5.02</b>
Wet 1	0.14
Wet 2	0.19
Wet 3	0.48
Wet 4	0
Wet 5	0.78
Wet 6	0.62
Wet 7	0.22
Wet 8	1.07
Wet 9	0.1
<b>Total</b>	<b>3.6</b>
<b>Total</b>	<b>15.48</b>

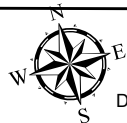
## Legend

- Project Area (75.60 ac)
- Conservation Easement
- Wetland Impacts**
- OSW



### Figure 5 Wetland Impact Map

Page 5 of 7



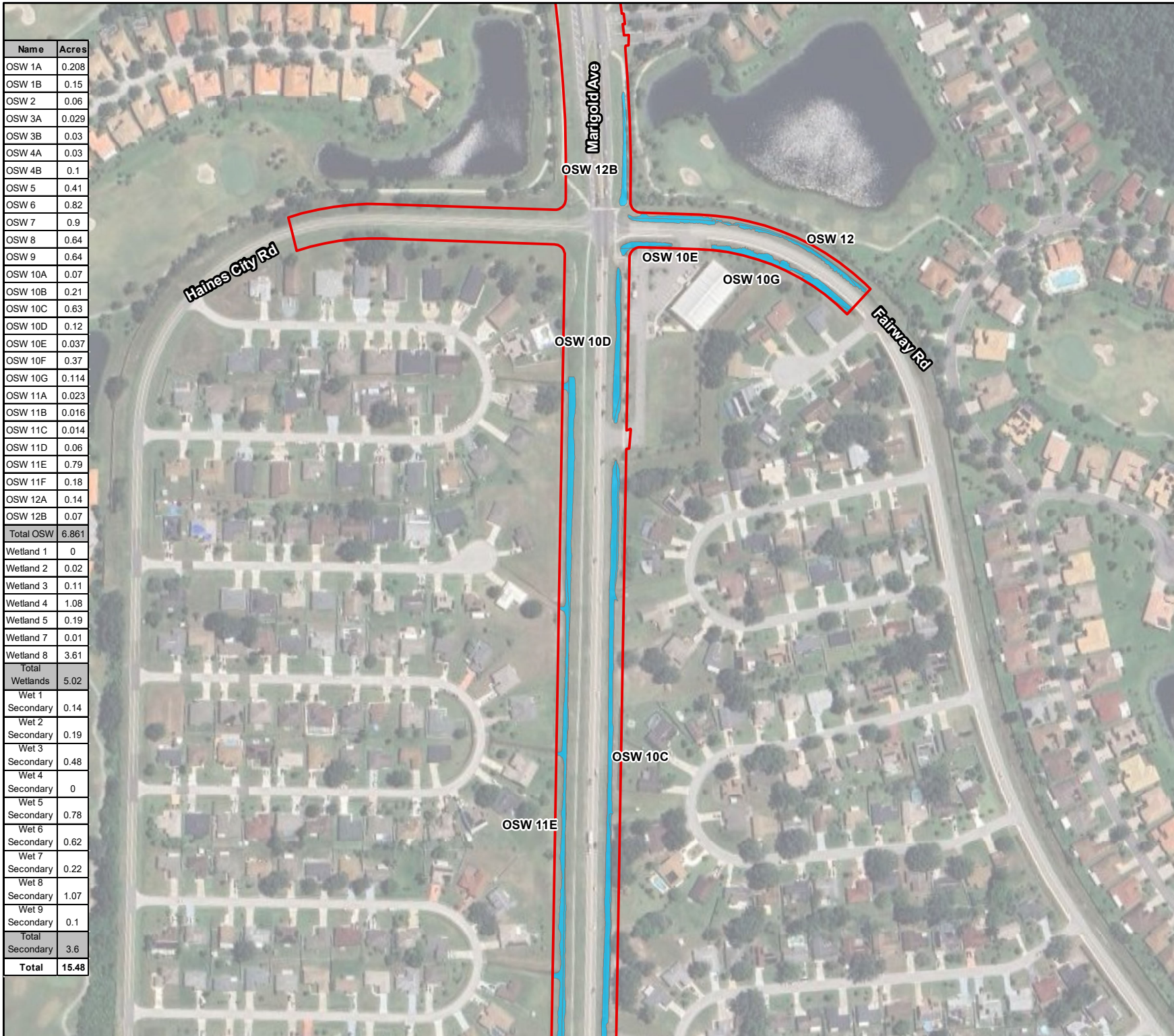
Date: 3/13/2024

0 150 300 Feet

1 inch = 300 feet

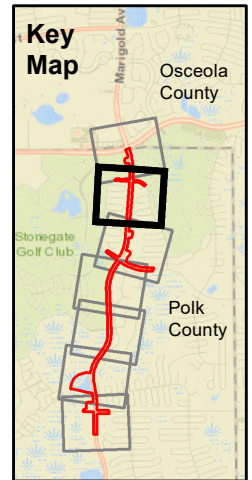
# Marigold Ave Widening Polk County, FL

Name	Acres
OSW 1A	0.208
OSW 1B	0.15
OSW 2	0.06
OSW 3A	0.029
OSW 3B	0.03
OSW 4A	0.03
OSW 4B	0.1
OSW 5	0.41
OSW 6	0.82
OSW 7	0.9
OSW 8	0.64
OSW 9	0.64
OSW 10A	0.07
OSW 10B	0.21
OSW 10C	0.63
OSW 10D	0.12
OSW 10E	0.037
OSW 10F	0.37
OSW 10G	0.114
OSW 11A	0.023
OSW 11B	0.016
OSW 11C	0.014
OSW 11D	0.06
OSW 11E	0.79
OSW 11F	0.18
OSW 12A	0.14
OSW 12B	0.07
<b>Total OSW</b>	<b>6.861</b>
Wetland 1	0
Wetland 2	0.02
Wetland 3	0.11
Wetland 4	1.08
Wetland 5	0.19
Wetland 7	0.01
Wetland 8	3.61
<b>Total Wetlands</b>	<b>5.02</b>
Wet 1 Secondary	0.14
Wet 2 Secondary	0.19
Wet 3 Secondary	0.48
Wet 4 Secondary	0
Wet 5 Secondary	0.78
Wet 6 Secondary	0.62
Wet 7 Secondary	0.22
Wet 8 Secondary	1.07
Wet 9 Secondary	0.1
<b>Total Secondary</b>	<b>3.6</b>
<b>Total</b>	<b>15.48</b>



## Legend

- Project Area (75.60 ac)
- Wetland Impacts
- OSW

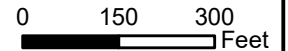


**Figure 5  
Wetland  
Impact Map**

Page 6 of 7



Date: 3/13/2024



1 inch = 300 feet

# Marigold Ave Widening Polk County, FL

Name	Acres
OSW 1A	0.208
OSW 1B	0.15
OSW 2	0.06
OSW 3A	0.029
OSW 3B	0.03
OSW 4A	0.03
OSW 4B	0.1
OSW 5	0.41
OSW 6	0.82
OSW 7	0.9
OSW 8	0.64
OSW 9	0.64
OSW 10A	0.07
OSW 10B	0.21
OSW 10C	0.63
OSW 10D	0.12
OSW 10E	0.037
OSW 10F	0.37
OSW 10G	0.114
OSW 11A	0.023
OSW 11B	0.016
OSW 11C	0.014
OSW 11D	0.06
OSW 11E	0.79
OSW 11F	0.18
OSW 12A	0.14
OSW 12B	0.07
<b>Total OSW</b>	<b>6.861</b>
Wetland 1	0
Wetland 2	0.02
Wetland 3	0.11
Wetland 4	1.08
Wetland 5	0.19
Wetland 7	0.01
Wetland 8	3.61
<b>Total Wetlands</b>	<b>5.02</b>
Wet 1 Secondary	0.14
Wet 2 Secondary	0.19
Wet 3 Secondary	0.48
Wet 4 Secondary	0
Wet 5 Secondary	0.78
Wet 6 Secondary	0.62
Wet 7 Secondary	0.22
Wet 8 Secondary	1.07
Wet 9 Secondary	0.1
<b>Total Secondary</b>	<b>3.6</b>
<b>Total</b>	<b>15.48</b>

End Project

Cypress Pkwy

POND M-6  
Wetland 4

Marigold Ave

OSW 12B

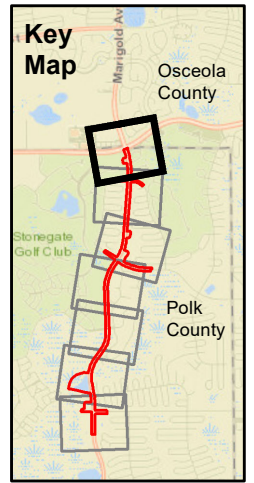
**Legend**

Project Area (75.60 ac)

**Wetland Impacts**

OSW

Wetland



**Figure 5  
Wetland  
Impact Map**

Date: 3/13/2024

0 150 300 Feet

1 inch = 300 feet