



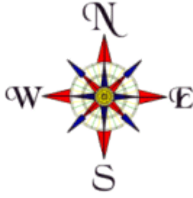
Subject Area



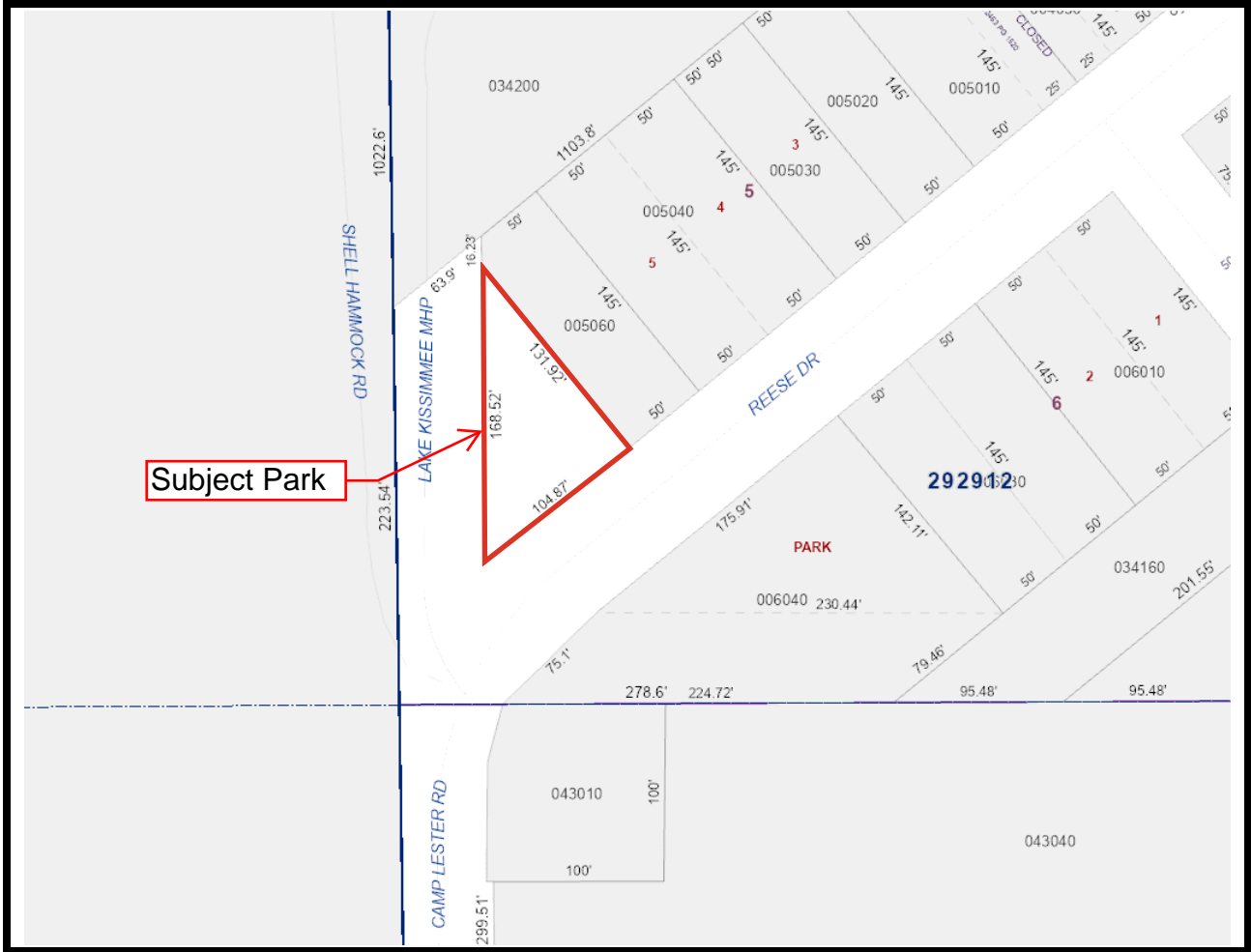
Allen David Broussard
Catfish Creek
Preserve State Park

Section 12, Township 29 South, Range 29 East





SECTION 12, TOWNSHIP 29 SOUTH, RANGE 29 EAST



COUNTY COMMISSIONERS APPROVAL

Examined and approved by the County Commissioners of Polk County Florida on this 20th day of August 1948.

Board of County Commissioners
By Jas. [Signature]
Chairman

ATTEST: D.H. Sloan Jr. Clerk

CERTIFICATE OF CLERK OF CIRCUIT COURT

STATE OF FLORIDA
COUNTY OF POLK

I, D.H. SLOAN JR., Clerk of the Circuit Court of Polk County Florida do hereby certify that I have examined this plat and that it complies, in form, with all the requirements of the laws of the State of Florida, regulating the making of surveys and filing for record of maps and plats, and I have this day filed same for record.

WITNESS my hand and official seal at Bartow, Florida, this 23rd day of August 1948.

D.H. Sloan Jr.
Clerk of Circuit Court

CERTIFICATE OF DEDICATION

STATE OF FLORIDA
COUNTY OF POLK

We, L.G. BRUCE and JOSIE I. BRUCE the owners of the land shown upon this plat designated as CAMP LESTER in Polk County, Florida, do hereby dedicate to the use of the public forever all of the parks, parkways, streets, alleys, avenues, boulevards and highways shown upon this plat of said land.

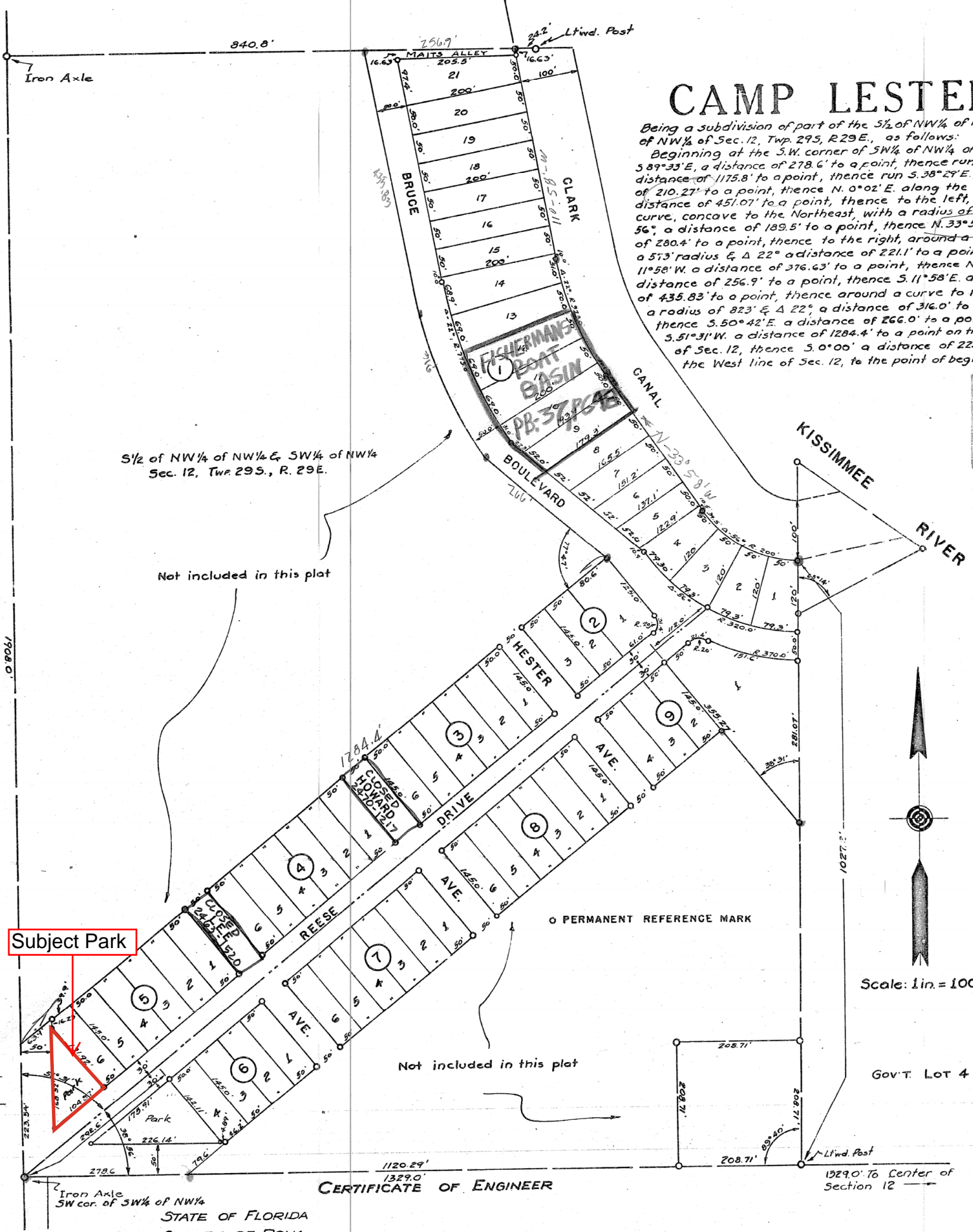
Signed, sealed and delivered in the presence of:

L.G. Bruce (Seal) Josie I. Bruce (Seal)
WITNESSES [Signatures]

I HEREBY CERTIFY, That L.G. & JOSIE I. BRUCE whose name are signed to the foregoing Plat, and who is personally known to me came before me this day and acknowledged that they executed the same for the purpose therein expressed and as their free act and deed.

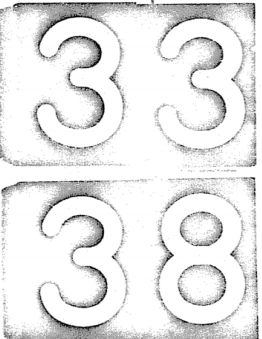
WITNESS my hand and seal this 9th day of August, 1948.

Emma L. Stephens
Notary Public



CAMP LESTER

Being a subdivision of part of the 1/2 of NW 1/4 of NW 1/4 & SW 1/4 of NW 1/4 of Sec. 12, Twp. 29 S, R. 29 E., as follows:
Beginning at the S.W. corner of SW 1/4 of NW 1/4 of Sec. 12, run S 89° 33' E, a distance of 278.6' to a point, thence run N. 51° 31' E. a distance of 1175.8' to a point, thence run S. 38° 29' E. a distance of 210.27' to a point, thence N. 0° 02' E. along the E. line, a distance of 451.07' to a point, thence to the left, around a curve, concave to the Northeast, with a radius of 200' & Δ 56°, a distance of 189.5' to a point, thence N. 33° 58' W. a distance of 280.4' to a point, thence to the right, around a curve with a 513' radius & Δ 22° a distance of 221.1' to a point, thence N. 11° 58' W. a distance of 376.63' to a point, thence N. 88° 38' W. a distance of 256.9' to a point, thence S. 11° 58' E. a distance of 435.83' to a point, thence around a curve to the left, with a radius of 823' & Δ 22°, a distance of 316.0' to a point, thence S. 50° 42' E. a distance of 266.0' to a point, thence S. 51° 31' W. a distance of 1284.4' to a point on the West line of Sec. 12, thence S. 0° 00' a distance of 223.54' to the West line of Sec. 12, to the point of beginning.



1/2 of NW 1/4 of NW 1/4 & SW 1/4 of NW 1/4 Sec. 12, Twp. 29 S., R. 29 E.

Not included in this plat

Subject Park

Not included in this plat

CERTIFICATE OF ENGINEER

STATE OF FLORIDA
COUNTY OF POLK

I, the Engineer who made this map, do hereby certify that the same is a correct representation of the land platted and that permanent reference monuments have been placed as called for by the laws of the State of Florida regulating the making of maps and plats.

WITNESS my hand at Bartow, Florida this 6th day of August, 1948.

Scale: 1 in. = 100 ft.

Gov't Lot 4