

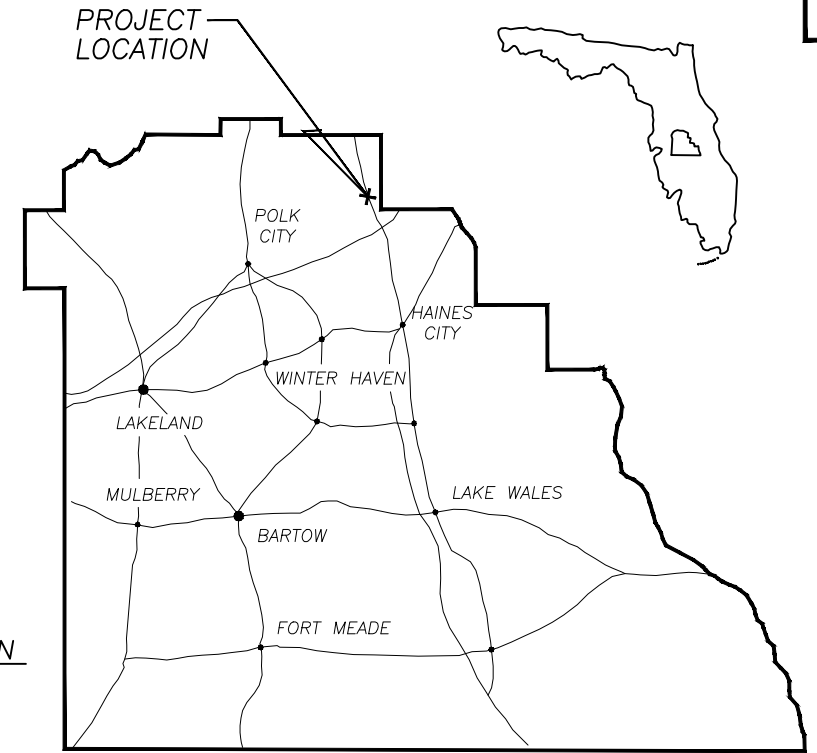
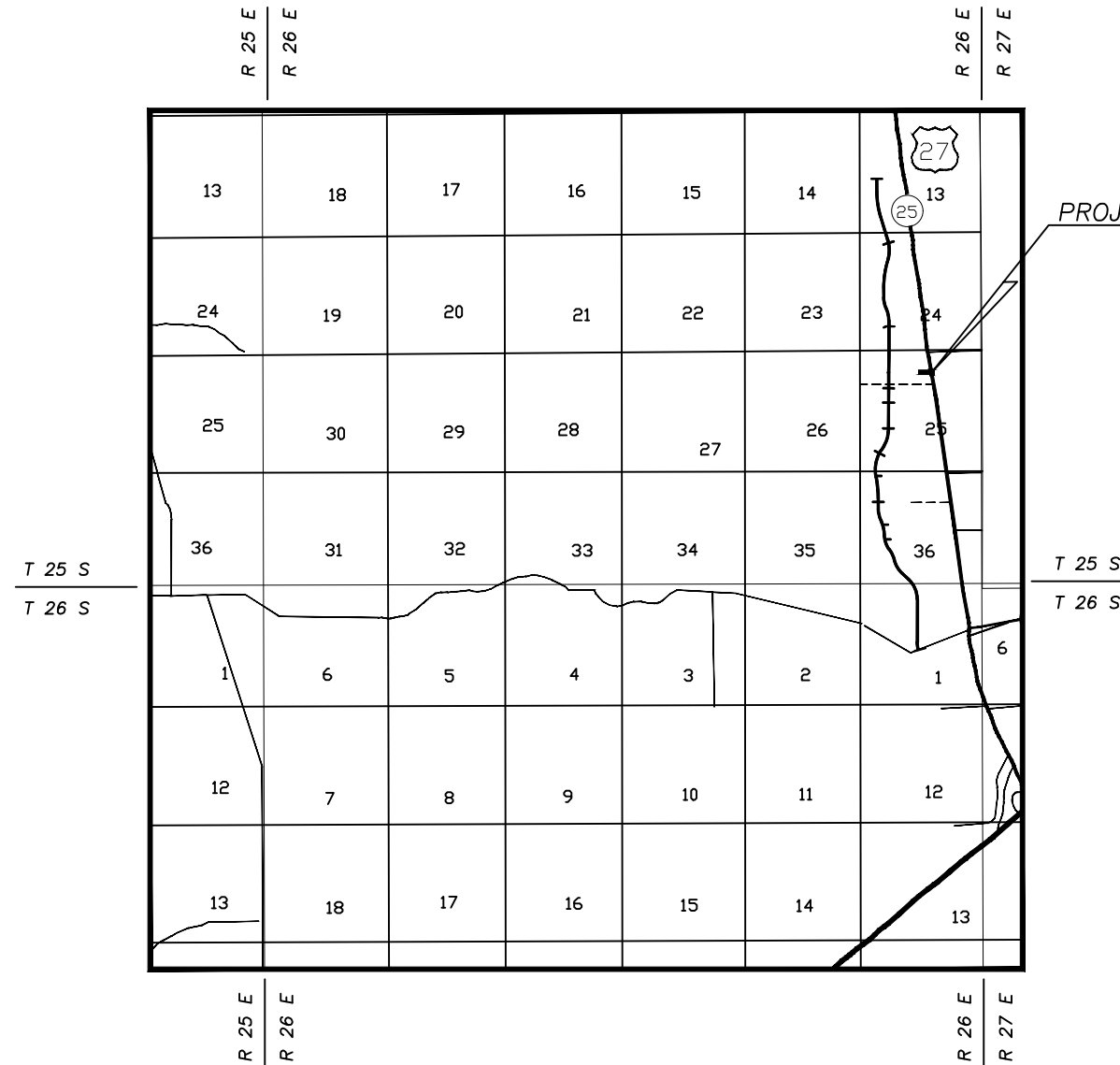


# POLK COUNTY ROADS AND DRAINAGE

FOR  
TIERRA DEL SOL / CENTRAL GROVE RD.  
POLK COUNTY PROJECT NO. 5400229  
FDOT PERMIT NUMBER 2023-C-190-00002

### INDEX OF ROADWAY PLANS

- 1 KEY SHEET
- 2 SIGNATURE SHEET
- 3 SUMMARY OF PAY ITEMS
- 4 TYPICAL SECTION SHEETS
- 5-6 PLAN SHEETS
- 7-10 CROSS SECTIONS
- 11 SUMMARY OF QUANTITIES
- 12-13 SIGNING AND PAVEMENT MARKING PLAN SHEETS
- 14-15 SIGNALIZATION TABULATION OF QUANTITIES
- 16 SIGNALIZATION PAY ITEM NOTES
- 17 SIGNALIZATION GENERAL NOTES
- 18 SIGNALIZATION PLAN
- 19 SIGNALIZATION DETAILS
- 20-26 INTERCONNECT PLANS
- 27 OVERHEAD STREET NAME SIGN WORKSHEET
- 28-29 SIGNING PLAN
- 30 ADVANCED STREET NAME SIGN WORKSHEET
- 31 CCTV WIRING DIAGRAM
- 32 FIBER OPTIC SPLICING DETAIL
- 33 STRAIN POLE SCHEDULE
- 34 STRAIN POLE DETAIL
- 35 LIGHTING DATA TABLE & LEGEND
- 36 LIGHTING PLAN SHEET
- 37 LUMINAIRE DETAIL
- 38 TEMP. TRAFFIC CONTROL US 27
- 39 SIDEWALK CLOSURE PLAN



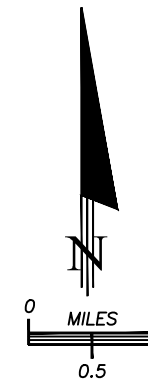
POLK COUNTY  
VICINITY MAP

I HEREBY CERTIFY THAT I AM A REGISTERED PROFESSIONAL ENGINEER IN THE STATE OF FLORIDA PRACTICING WITH URS, AND THAT THESE PLANS HAVE BEEN PREPARED UNDER MY DIRECT SUPERVISION. I HEREBY APPROVE THESE PLANS AS SIGNED AND SEALED.

ENGINEER OF RECORD: \_\_\_\_\_  
ROBERT N. JULIUS, P.E., 54039

PLANS PREPARED BY:

**AECOM** AECOM Technical Services  
212 East Main Street  
Bartow, FL 33830-4631



ATTENTION IS DIRECTED TO THE FACT THAT THESE PLANS MAY HAVE CHANGED BY REPRODUCTION. THIS MUST BE CONSIDERED WHEN OBTAINING SCALED DATA.

GOVERNING STANDARDS AND SPECIFICATIONS  
FLORIDA DEPARTMENT OF TRANSPORTATION 2023-24 STANDARD PLANS FOR ROAD AND BRIDGE CONSTRUCTION AND APPLICABLE INTERIM REVISIONS (IRs), AND DIVISION II AND III OF THE 2023-24 STANDARD SPECIFICATIONS FOR ROAD AND BRIDGE CONSTRUCTION, AS AMENDED BY CONTRACT DOCUMENTS.

STANDARD PLANS FOR ROAD AND CONSTRUCTION AND ASSOCIATED IRs ARE AVAILABLE AT THE FOLLOWING WEB SITE: <http://www.fdot.gov/design/standardplans>

FOR THE STANDARD SPECIFICATIONS FOR ROAD AND BRIDGE CONSTRUCTION CLICK ON THE "SPECIFICATIONS" LINK AT THE FOLLOWING WEB SITE:  
<http://www.fdot.gov/programmanagement/implemented/specbooks>

LENGTH OF PROJECT		
	LN. FT.	MILES
CENTRAL GROVE / TIERRA	716.71	0.136
US 27	550.37	0.104
GROSS LENGTH OF PROJECT	1267.08	0.240

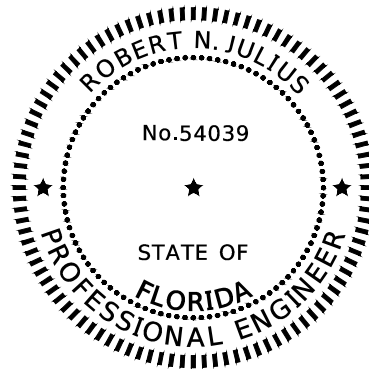
REVISIONS		
DATE	BY	DESCRIPTION

POLK COUNTY PROJECT MANAGER: DOUG GABLE, PE

AECOM PROJECT NO. 60688637

THE OFFICIAL RECORD OF THIS SHEET IS THE ELECTRONIC FILE DIGITALLY SIGNED AND SEALED UNDER RULE 61G15-23.004, F.A.C.

COUNTY PROJ. NO.	SHEET NO.
5400229	2



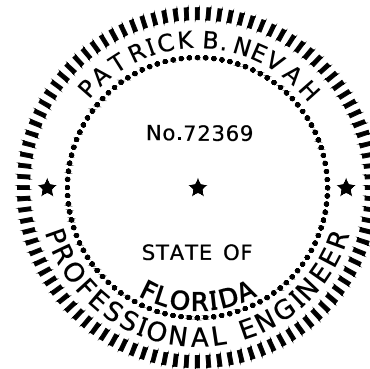
THIS ITEM HAS BEEN DIGITALLY SIGNED AND SEALED BY

ON THE DATE ADJACENT TO THE SEAL PRINTED COPIES OF THIS DOCUMENT ARE NOT CONSIDERED SIGNED AND SEALED AND THE SIGNATURE MUST BE VERIFIED ON ANY ELECTRONIC COPIES.

AECOM TECHNICAL SERVICES  
212 EAST MAIN STREET  
BARTOW, FL 33830-4631  
ROBERT N. JULIUS, P.E. NO. 54039

THE ABOVE NAMED PROFESSIONAL ENGINEER SHALL BE RESPONSIBLE FOR THE FOLLOWING SHEETS IN ACCORDANCE WITH RULE 61G15-23.004, F.A.C.

SHEET NO.	SHEET DESCRIPTION
1	KEY SHEET
2	SIGNATURE SHEET
3	SUMMARY OF PAY ITEMS
4	TYPICAL SECTION
5-6	PLAN SHEETS
7-10	CROSS SECTIONS
11	SUMMARY OF QUANTITIES
12-13	SIGNING AND PAVEMENT MARKINGS PLAN SHEETS
28-29	SIGNING PLAN SHEET
30	ADVANCED STREET NAME SIGN WORKSHEET
38	TEMP. TRAFFIC CONTROL US 27
39	SIDEWALK CLOSURE PLAN



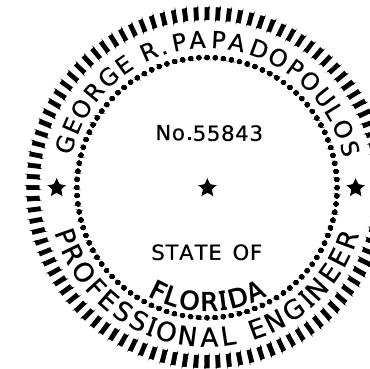
THIS ITEM HAS BEEN DIGITALLY SIGNED AND SEALED BY

ON THE DATE ADJACENT TO THE SEAL PRINTED COPIES OF THIS DOCUMENT ARE NOT CONSIDERED SIGNED AND SEALED AND THE SIGNATURE MUST BE VERIFIED ON ANY ELECTRONIC COPIES.

AECOM TECHNICAL SERVICES  
212 EAST MAIN STREET  
BARTOW, FL 33830-4631  
PATRICK B. NEVAH, P.E. NO. 72369

THE ABOVE NAMED PROFESSIONAL ENGINEER SHALL BE RESPONSIBLE FOR THE FOLLOWING SHEETS IN ACCORDANCE WITH RULE 61G15-23.004, F.A.C.

SHEET NO.	SHEET DESCRIPTION
14-15	SIGNALIZATION TABULATION OF QUANTITIES
16	SIGNALIZATION PAY ITEM NOTES
17	SIGNALIZATION GENERAL NOTES
18	SIGNALIZATION PLAN
19	SIGNALIZATION DETAILS
20-26	INTERCONNECT PLANS
27	OVERHEAD STREET NAME SIGN WORKSHEET
28-29	SIGNING PLAN SHEET
31	CCTV WIRING DIAGRAM
32	FIBER OPTIC SPLICING DETAIL
33	STRAIN POLE SCHEDULE



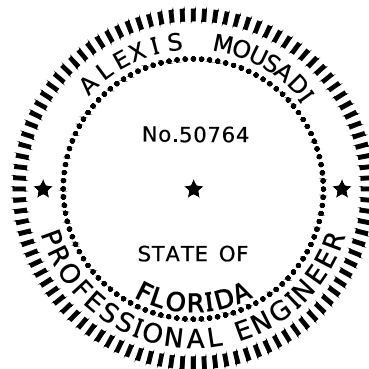
THIS ITEM HAS BEEN DIGITALLY SIGNED AND SEALED BY

ON THE DATE ADJACENT TO THE SEAL PRINTED COPIES OF THIS DOCUMENT ARE NOT CONSIDERED SIGNED AND SEALED AND THE SIGNATURE MUST BE VERIFIED ON ANY ELECTRONIC COPIES.

AECOM TECHNICAL SERVICES  
212 EAST MAIN STREET  
BARTOW, FL 33830-4631  
GEORGE R. PAPAPOPOULOS, P.E. NO. 55843

THE ABOVE NAMED PROFESSIONAL ENGINEER SHALL BE RESPONSIBLE FOR THE FOLLOWING SHEETS IN ACCORDANCE WITH RULE 61G15-23.004, F.A.C.

SHEET NO.	SHEET DESCRIPTION
34	STRAIN POLE DETAIL



THIS ITEM HAS BEEN DIGITALLY SIGNED AND SEALED BY

ON THE DATE ADJACENT TO THE SEAL PRINTED COPIES OF THIS DOCUMENT ARE NOT CONSIDERED SIGNED AND SEALED AND THE SIGNATURE MUST BE VERIFIED ON ANY ELECTRONIC COPIES.

AECOM TECHNICAL SERVICES  
212 EAST MAIN STREET  
BARTOW, FL 33830-4631  
ALEXIS MOUSADI, P.E. NO. 50764

THE ABOVE NAMED PROFESSIONAL ENGINEER SHALL BE RESPONSIBLE FOR THE FOLLOWING SHEETS IN ACCORDANCE WITH RULE 61G15-23.004, F.A.C.

SHEET NO.	SHEET DESCRIPTION
35	LIGHTING DATA TABLE & LEGEND
36	LIGHTING PLAN SHEET
37	LUMINAIRE DETAIL

REVISIONS

DATE	BY	DESCRIPTION	DATE	BY	DESCRIPTION	DATE	BY	DESCRIPTION	DATE	BY	DESCRIPTION

**AECOM**  
AECOM Technical Services  
212 East Main Street  
Bartow, FL 33830-4631  
ROBERT N. JULIUS, P.E. 54039

POLK COUNTY  
ROADS AND DRAINAGE  
APPROVED BY:      DATE:

TIERRA DEL SOL  
SIGNATURE SHEET

THE OFFICIAL RECORD OF THIS SHEET IS THE ELECTRONIC FILE DIGITALLY SIGNED AND SEALED UNDER RULE 61G15-23.004, F.A.C.

SUMMARY OF PAY ITEMS (BID NO. 21-511)					
BID PAY ITEM NO.	PAY ITEM NO.	PAY ITEM DESCRIPTION	UNIT	QUANTITY	
				P	F
	101-1	MOBILIZATION	LS	1	
	102-1	MAINTENANCE OF TRAFFIC	LS	1	
	102-60	WORK ZONE SIGNS	ED	480	
	102-74-1	CHANNELIZING DEVICE	ED	2160	
	102-76	ADVANCED WARNING ARROW PANEL	ED	30	
	102-99	PORTABLE CHANGEABLE MESSAGE SIGN, TEMP.	ED	30	
	102-115	TYPE III BARRICADE	ED	60	
3	104-10-3	SEDIMENT BARRIER	LF	509	
--	104-18	INLET PROTECTION SYSTEM	EA	1	
	110-1-1	CLEARING & GRUBBING	LS	1	
--	110-4-10	REMOVAL OF EXISTING CONCRETE	SY	84	
7	120-1	REGULAR EXCAVATION	CY	424	
8	120-6	EMBANKMENT	CY	16	
10	160-4	TYPE B STABILIZATION	SY	526	
20	285-711	OPTIONAL BASE, BASE GROUP 11 (12" LIMEROCK)	SY	428	
24	327-70-6	MILLING EXISTING ASPHALT PAVEMENT, 1 1/2" AVG DEPTH	SY	936	
--	327-70-11	MILLING EXISTING ASPHALT PAVEMENT, 2 1/4" AVG DEPTH	SY	6021	
27	334-1-13	SUPERPAVE ASPHALTIC CONC, TRAFFIC C	TN	543.67	
--	337-7-25	ASPHALT FRICTION COURSE, FC 5, PG 76-22	TN	240.81	
29	337-7-83	ASPHALT FRICTION COURSE, TRAFFIC C, FC-12.5, PG 76-22	TN	112.41	
--	400-0	CLASS NS CONCRETE, GRAVITY WALL	CY	37.2	
50	425-2-41	MANHOLE TYPE 7 (<10')	EA	1	
80	430-982-125	MITERED END SECTION 18" CD	EA	1	
--	515-2-111	PEDESTRIAN RAILING	LF	15	
121	520-1-10	CONCRETE CURB & GUTTER (TYPE F)	LF	318	
126	522-1	CONCRETE SIDEWALK AND DRIVEWAYS, 4" THICK	SY	368	
131	527-2	DETECTABLE WARNINGS	SF	308	
--	536-73	REMOVE GUARDRAIL	LF	67	
--	536-85-24	GUARDRAIL END TREATMENT (PARALLEL APPROACH TERMINAL) (TL-3)	EA	1	
138	575-1-2	PERFORMANCE TURF (SOD) (BAHIA)	SY	685	
140	700-1-11	SINGLE POST SIGN, F&I GROUND MOUNT, UP TO 12 SF (R10-15A)	AS	2	
142	700-1-50	SINGLE POST SIGN, RELOCATE	AS	1	
143	700-1-60	SINGLE POST SIGN, REMOVE	AS	2	
--	700-2-16	MULTI POST SIGN, GROUND MOUNT, 101-200 SF	AS	2	
--	704-1-2	TUBULAR MARKER, DURABLE, 36" YELLOW POST	EA	10	
148	706-1-3	RAISED PAVEMENT MARKER, TYPE B Y/Y W/R	EA	42 116	
--	710-11-101	PAINTED PAVEMENT MARKINGS, STD., WHITE, SOLID, 6"	GM	0.58	
149	711-11-123	THERMO, STD, WHITE, SOLID, 12" FOR CROSSWALK & ROUNDABOUT	LF	558	
151	711-11-125	THERMO, STD, WHITE, SOLID, 24" FOR STOP LINE & CROSSWALK	LF	893	
152	711-11-141	THERMO, STD, WHITE, 2-4 DOTTED GUIDELINE	GM	0.073	
154	711-11-170	THERMO, STD, WHITE, ARROW	EA	19	

SUMMARY OF PAY ITEMS (BID NO. 21-511)					
BID PAY ITEM NO.	PAY ITEM NO.	PAY ITEM DESCRIPTION	UNIT	QUANTITY	
				P	F
155	711-11-224	THERMO, STD, YELLOW, SOLID, 18" FOR DIAGONAL OR CHEVRON	LF	135	
--	711-11-241	THERMO, SD, YELLOW, 2-4 DOTTED GUIDELINE	GM	0.078	
156	711-16-101	THERMO, STD-OTHER SURFACES, WHITE, SOLID, 6"	GM	0.658	
157	711-16-201	THERMO, STD-OTHER SURFACES, YELLOW, SOLID, 6"	GM	0.289	
--	711-141-60	THERMO, PREFORMED, WHITE, MESSAGE "BICYCLE SYMBOL"	EA	2	
--	711-141-70	THERMO, PREFORMED, WHITE, ARROW	EA	2	

ITEM 700-2-16: SIGNS TO BE PLACED APPROXIMATELY 1100' IN ADVANCE OF INTERSECTION. SIGN OFFSET FROM ROADWAY AND ELEVATION RELATIVE TO ROADWAY TO BE PER CASE 1 OF FDOT STANDARD PLANS INDEX 700-101. VERIFY GROUND ELEVATIONS FOR SIGN COLUMNS, DETERMINE SIGN COLUMN SIZES AND LENGTHS. SHOP DRAWINGS FOR THE SIGN COLUMNS TO BE SUBMITTED FOR REVIEW. SEE SHEET 28 FOR "NEXT SIGNAL" SIGN DETAIL.

PROJECT NOTES

- TOPOGRAPHICAL SURVEY WAS PROVIDED BY POLK COUNTY SURVEYING.
- ANY PUBLIC LAND CORNER WITHIN THE LIMITS OF CONSTRUCTION IS TO BE PROTECTED. IF A CORNER MONUMENT IS IN DANGER OF BEING DESTROYED AND HAS NOT BEEN PROPERLY REFERENCED, NOTIFY THE COUNTY SURVEYOR WITHOUT DELAY.
- VERIFY ALL UTILITIES WITHIN THE PROJECT LIMITS. NOTIFY ALL UTILITY OWNERS AT LEAST TWO WORKING DAYS PRIOR TO ANY EXCAVATION ACTIVITIES.
- UTILITY/AGENCY OWNERS:

<u>COMPANY</u>	<u>CONTACT</u>	<u>TELEPHONE NUMBERS</u>
FRONTIER	FRED VALDES	863 688-9714
SPECTRUM	DARIN DANIELS	863 559-6699
SUMMIT BROADBAND	MICHELLE DANIEL	407 996-1183
CENTURY LINK	ERIC WELLS	407 907-9284
DUKE (DISTRIBUTION)	LEONARDO GONZALEZ	407 938-6637
ZAYO	BRUCE HERRINGTON	305 456-5100
FLORIDA PUBLIC UTILITIES	FOSTER CHATHAM	863 209-1172
POLK COUNTY UTILITIES	RYAN BENGSCH	863 307-2981
- USE FDOT STANDARD PLANS INDEX SERIES 102-600 TO ESTABLISH A TRAFFIC CONTROL PLAN FOR CENTRAL GROVE ROAD. CONTRACTOR TO PROVIDE TTCP SIGNED AND SEALED BY A FLORIDA ENGINEER FOR APPROVAL PRIOR TO IMPLEMENTING. FOR TTCP ON US 27, SEE SHEETS 38 & 39.
- MAINTAIN THE EXISTING REGULATORY SPEED AND ALL REGULATORY SIGNS DURING CONSTRUCTION UNLESS OTHERWISE NOTED ON PLANS.
- USE FDOT STANDARD PLANS 102-607 WHENEVER CONSTRUCTION EQUIPMENT IS RELOCATED OR DRIVEN ON EXISTING OPEN TRAVEL LANES.
- MAINTAIN ACCESS TO PRIVATE DRIVES AT ALL TIMES.
- ALL DISTURBED AREAS TO BE SODDED, UNLESS OTHERWISE NOTED IN THE PLAN SET.

REVISIONS

DATE	BY	DESCRIPTION	DATE	BY	DESCRIPTION	DATE	BY	DESCRIPTION	DATE	BY	DESCRIPTION

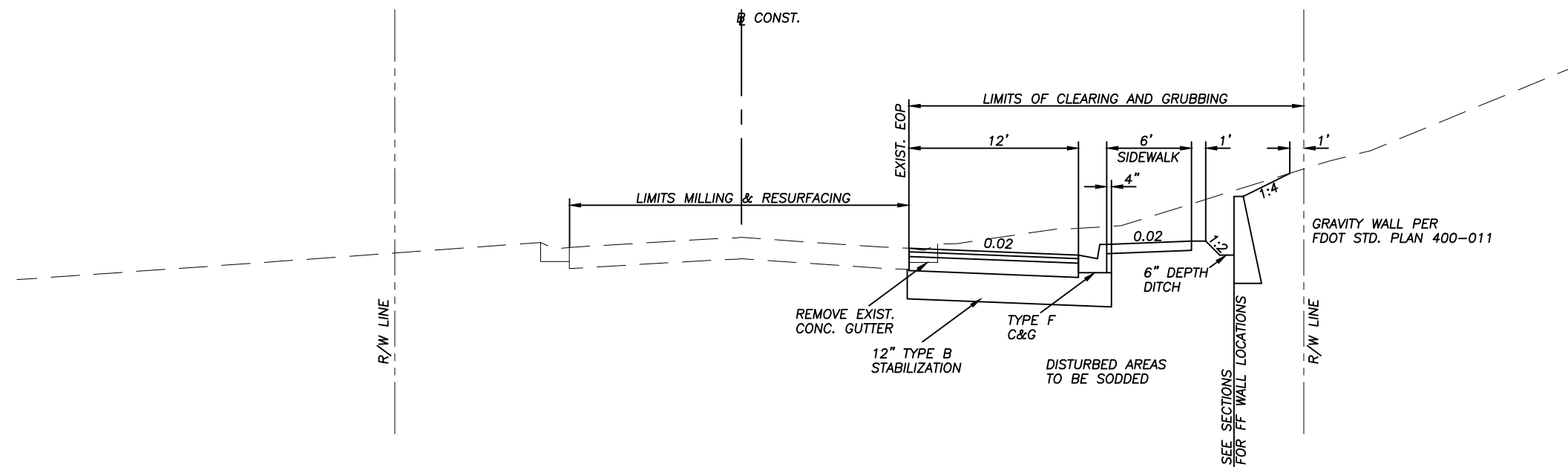
**AECOM** Technical Services  
212 East Main Street  
Bartow, FL 33830-4631  
ROBERT N. JULIUS, P.E. 54039

POLK COUNTY  
ROADS AND DRAINAGE  
APPROVED BY: \_\_\_\_\_ DATE: \_\_\_\_\_

TIERRA DEL SOL  
SUMMARY OF PAY ITEMS

THE OFFICIAL RECORD OF THIS SHEET IS THE ELECTRONIC FILE DIGITALLY SIGNED AND SEALED UNDER RULE 61G15-23.004, F.A.C.

COUNTY PROJ. NO.	SHEET NO.
5400229	4



CENTRAL GROVE ROAD  
TYPICAL SECTION  
DESIGN SPEED 30 MPH  
NTS

US 27  
POSTED SPEED 60 MPH

ROADWAY CONSTRUCTION (WIDENING)

- 1.5" FC 12.5 (PG 76-22)
- 2" TYPE SP STRUCTURAL 12.5 (TRAFFIC C)
- OPTION BASE GROUP 11 (12" LIMEROCK)
- 12" TYPE B STABILIZATION (LBR 40)

MILLING & RESURF. (CENTRAL GROVE RD.)

- 1.5" MILL
- 1.5" FC 12.5 (PG 76-22)

MILLING & RESURF. (US 27)

- 2.25" AVG. DEPTH MILL
- 0.75" FC 5 (PG 76-22)
- 1.5" TYPE SP STRUCTURAL 12.5 (TRAFFIC C)

REVISIONS

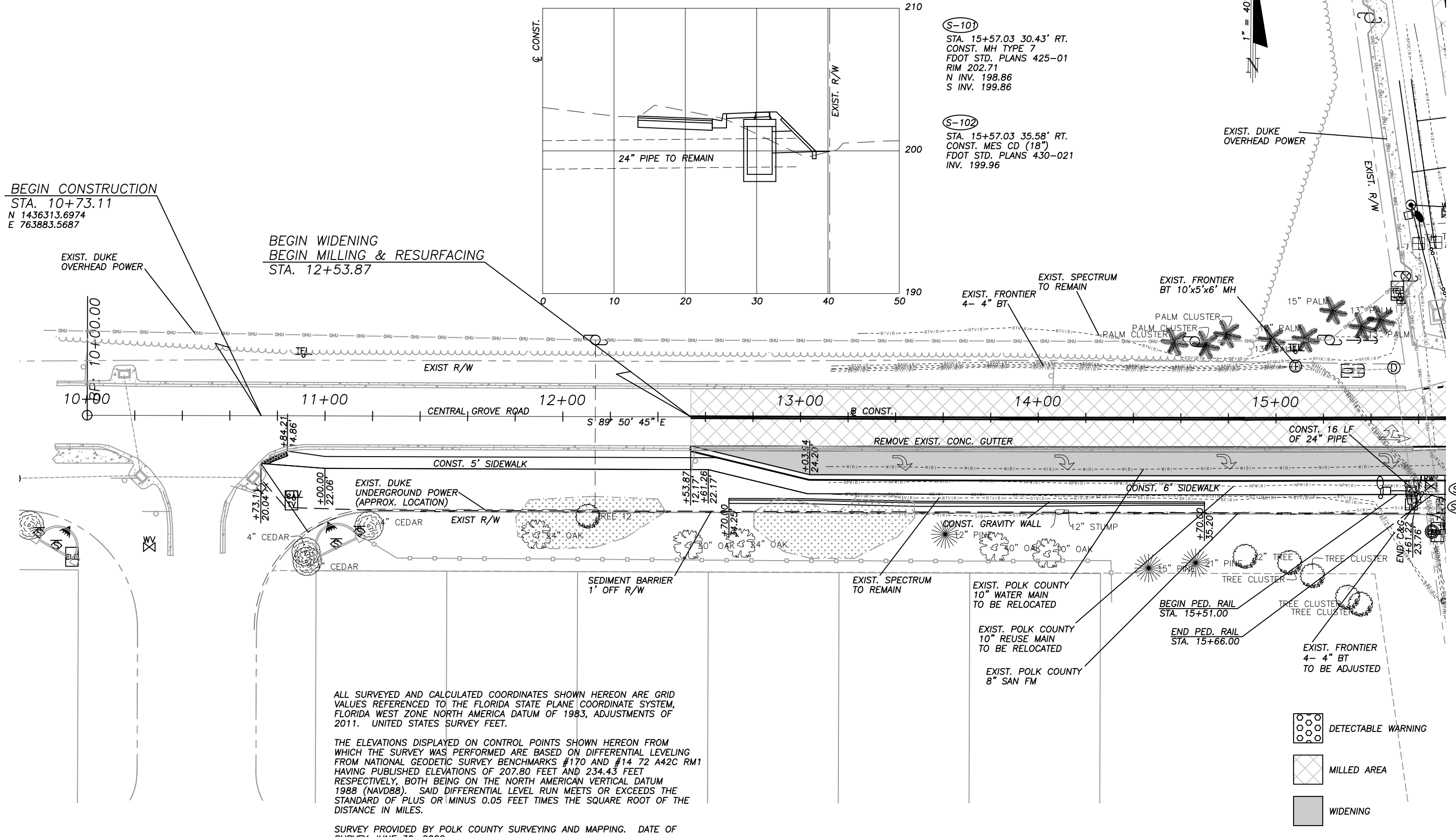
DATE	BY	DESCRIPTION	DATE	BY	DESCRIPTION	DATE	BY	DESCRIPTION	DATE	BY	DESCRIPTION

**AECOM**  
AECOM Technical Services  
212 East Main Street  
Bartow, FL 33830-4631  
ROBERT N. JULIUS, P.E. 54039

POLK COUNTY  
ROADS AND DRAINAGE  
APPROVED BY: \_\_\_\_\_ DATE: \_\_\_\_\_

CENTRAL GROVE ROAD  
TYPICAL SECTION

THE OFFICIAL RECORD OF THIS SHEET IS THE ELECTRONIC FILE DIGITALLY SIGNED AND SEALED UNDER RULE 61G15-23.004, F.A.C.



BEGIN CONSTRUCTION  
STA. 10+73.11  
N 1436313.6974  
E 763883.5687

BEGIN WIDENING  
BEGIN MILLING & RESURFACING  
STA. 12+53.87

(S-101)  
STA. 15+57.03 30.43' RT.  
CONST. MH TYPE 7  
FDOT STD. PLANS 425-01  
RIM 202.71  
N INV. 198.86  
S INV. 199.86

(S-102)  
STA. 15+57.03 35.58' RT.  
CONST. MES CD (18")  
FDOT STD. PLANS 430-021  
INV. 199.96

ALL SURVEYED AND CALCULATED COORDINATES SHOWN HEREON ARE GRID VALUES REFERENCED TO THE FLORIDA STATE PLANE COORDINATE SYSTEM, FLORIDA WEST ZONE NORTH AMERICA DATUM OF 1983, ADJUSTMENTS OF 2011. UNITED STATES SURVEY FEET.

THE ELEVATIONS DISPLAYED ON CONTROL POINTS SHOWN HEREON FROM WHICH THE SURVEY WAS PERFORMED ARE BASED ON DIFFERENTIAL LEVELING FROM NATIONAL GEODETIC SURVEY BENCHMARKS #170 AND #14 72 A42C RM1 HAVING PUBLISHED ELEVATIONS OF 207.80 FEET AND 234.43 FEET RESPECTIVELY, BOTH BEING ON THE NORTH AMERICAN VERTICAL DATUM 1988 (NAVD88). SAID DIFFERENTIAL LEVEL RUN MEETS OR EXCEEDS THE STANDARD OF PLUS OR MINUS 0.05 FEET TIMES THE SQUARE ROOT OF THE DISTANCE IN MILES.

SURVEY PROVIDED BY POLK COUNTY SURVEYING AND MAPPING. DATE OF SURVEY JUNE 30, 2022.

- DETECTABLE WARNING
- MILLED AREA
- WIDENING

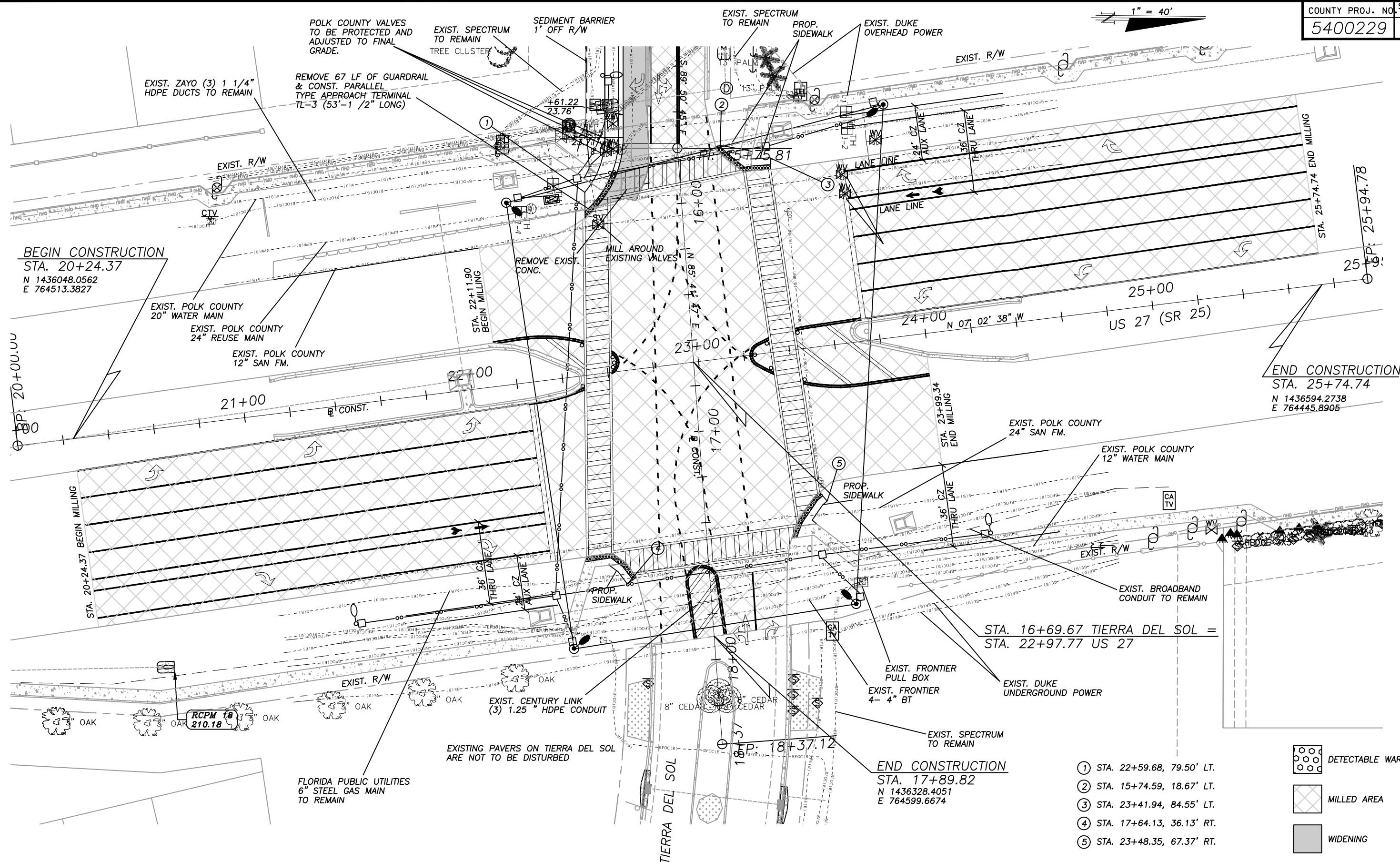
REVISIONS											
DATE	BY	DESCRIPTION	DATE	BY	DESCRIPTION	DATE	BY	DESCRIPTION	DATE	BY	DESCRIPTION

**AECOM** Technical Services  
212 East Main Street  
Bartow, FL 33830-4631  
ROBERT N. JULIUS, P.E. 54039

POLK COUNTY  
ROADS AND DRAINAGE  
APPROVED BY: \_\_\_\_\_ DATE: \_\_\_\_\_

CENTRAL GROVE RD.  
PLAN SHEET (1)

THE OFFICIAL RECORD OF THIS SHEET IS THE ELECTRONIC FILE DIGITALLY SIGNED AND SEALED UNDER RULE 61G15-23.004, F.A.C.



- ① STA. 22+59.68, 79.50' LT.
- ② STA. 15+74.59, 18.67' LT.
- ③ STA. 23+41.94, 84.55' LT.
- ④ STA. 17+64.13, 36.13' RT.
- ⑤ STA. 23+48.35, 67.37' RT.

	DETECTABLE WARNING
	MILLED AREA
	WIDENING

REVISIONS

DATE	BY	DESCRIPTION	DATE	BY	DESCRIPTION	DATE	BY	DESCRIPTION	DATE	BY	DESCRIPTION

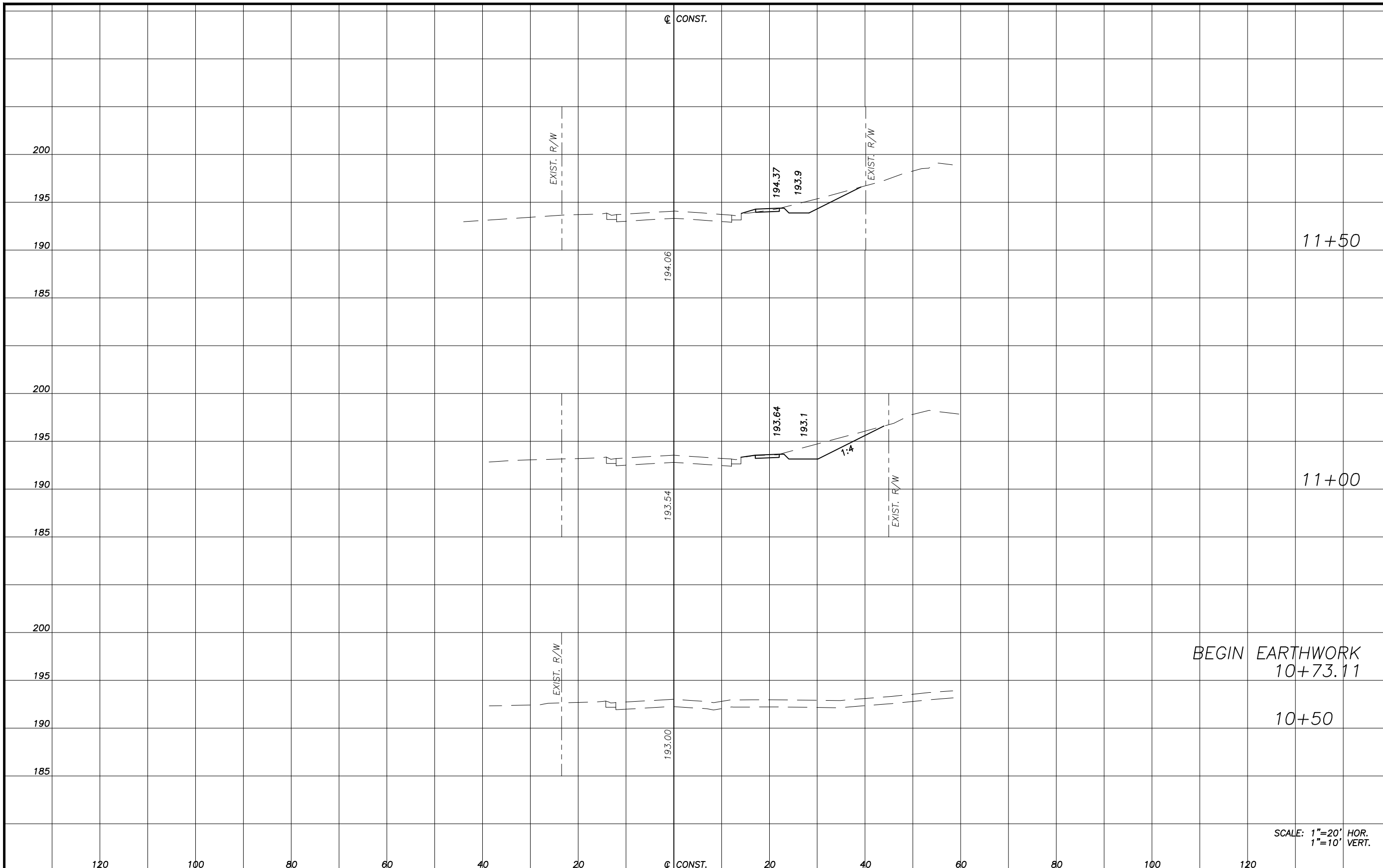
**AECOM** Technical Services  
 212 East Main Street  
 Bartow, FL 33830-4631  
 ROBERT N. JULIUS, P.E. 54039

POLK COUNTY  
 ROADS AND DRAINAGE  
 APPROVED BY: \_\_\_\_\_ DATE: \_\_\_\_\_

US 27  
 PLAN SHEET (1)

THE OFFICIAL RECORD OF THIS SHEET IS THE ELECTRONIC FILE DIGITALLY SIGNED AND SEALED UNDER RULE 61G15-23.004, F.A.C.

COUNTY PROJ. NO.	SHEET NO.
5400229	7



EARTHWORK			
RDWY EXC		FILL	
A	V	A	V
12		1	
	30		1
20		0	
	10		0
0		0	

SCALE: 1"=20' HOR.  
1"=10' VERT.

REVISIONS											
DATE	BY	DESCRIPTION	DATE	BY	DESCRIPTION	DATE	BY	DESCRIPTION	DATE	BY	DESCRIPTION

**AECOM** AECOM Technical Services  
212 East Main Street  
Bartow, FL 33830-4631

**POLK COUNTY**  
ROADS AND DRAINAGE

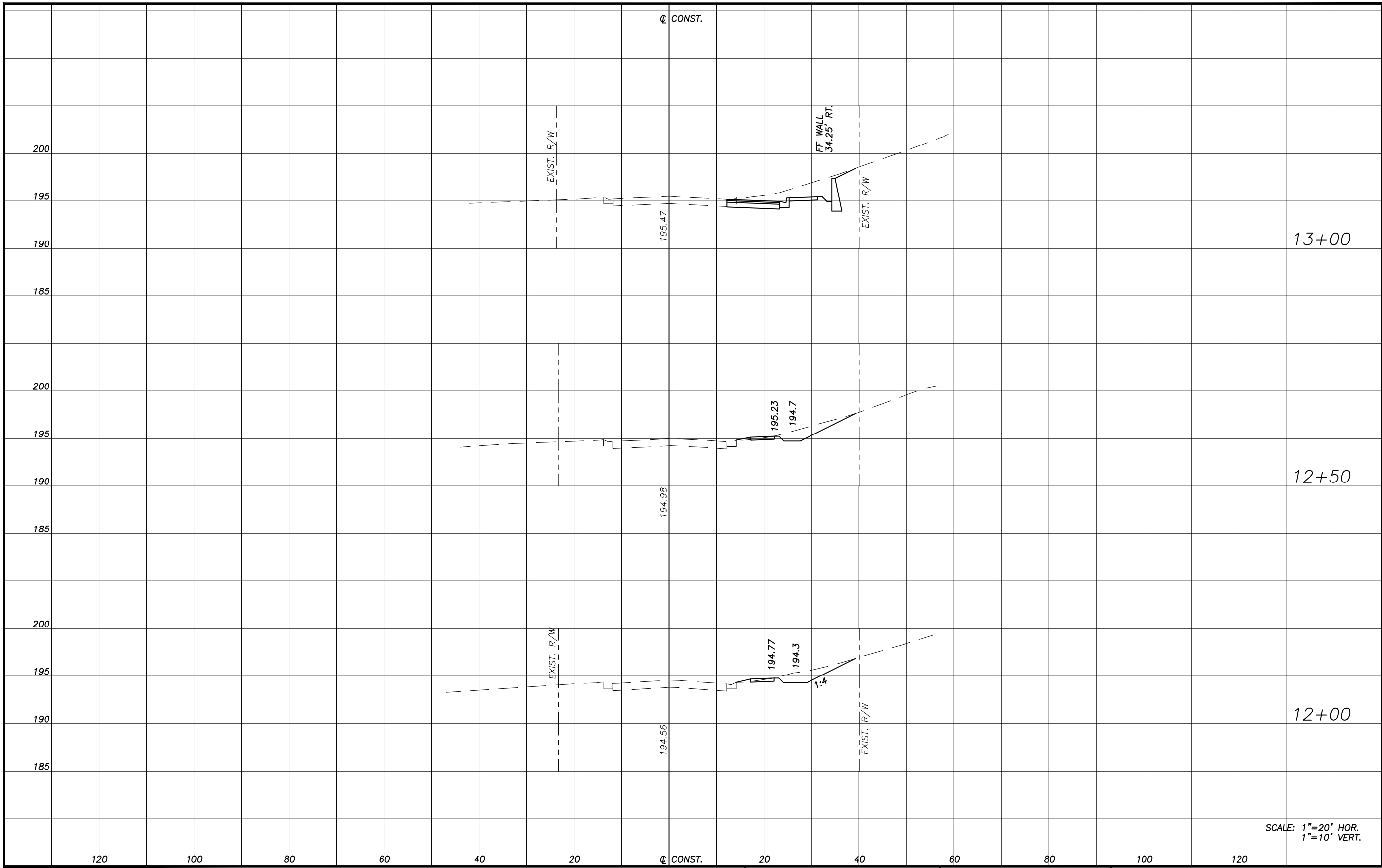
APPROVED BY: \_\_\_\_\_ DATE: \_\_\_\_\_

ROBERT N. JULIUS, P.E. 54039

# CENTRAL GROVE ROAD CROSS SECTION SHEET (1)

THE OFFICIAL RECORD OF THIS SHEET IS THE ELECTRONIC FILE DIGITALLY SIGNED AND SEALED UNDER RULE 61G15-23.004, F.A.C.

COUNTY PROJ. NO.	SHEET NO.
5400229	8



EARTHWORK			
RDWY EXC		FILL	
A	V	A	V
39		0	
	47		1
12		1	
	22		1
12		0	
	22		1
12		1	

SCALE: 1"=20' HOR.  
1"=10' VERT.

REVISIONS											
DATE	BY	DESCRIPTION	DATE	BY	DESCRIPTION	DATE	BY	DESCRIPTION	DATE	BY	DESCRIPTION

**AECOM**  
AECOM Technical Services  
212 East Main Street  
Bartow, FL 33830-4631  
ROBERT N. JULIUS, P.E. 54039

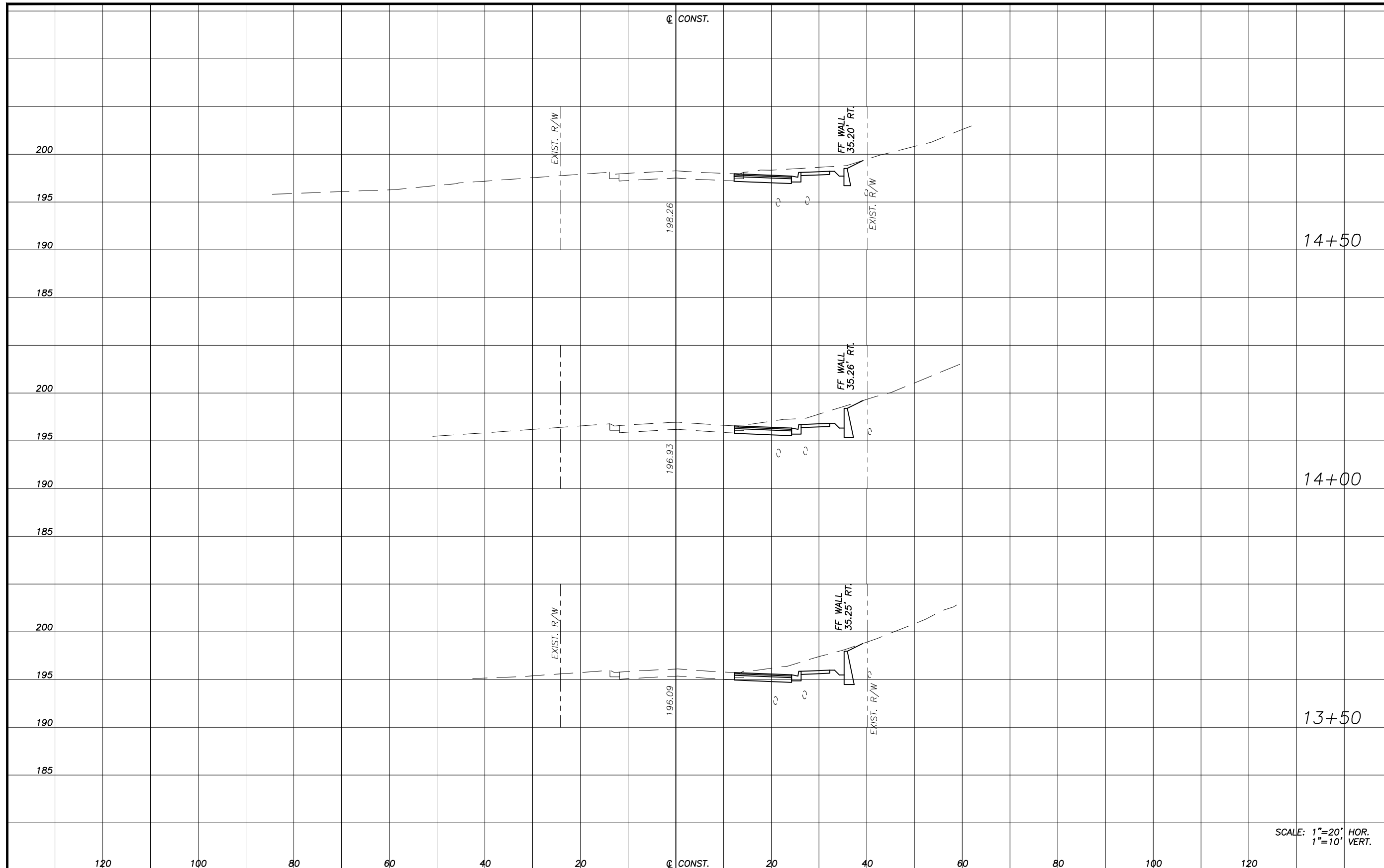
POLK COUNTY  
ROADS AND DRAINAGE  
APPROVED BY: \_\_\_\_\_ DATE: \_\_\_\_\_

# CENTRAL GROVE ROAD CROSS SECTION SHEET (2)

THE OFFICIAL RECORD OF THIS SHEET IS THE ELECTRONIC FILE DIGITALLY SIGNED AND SEALED UNDER RULE 61G15-23.004, F.A.C.



COUNTY PROJ. NO.	SHEET NO.
5400229	9



EARTHWORK			
RDWY EXC		FILL	
A	V	A	V
27	0	0	0
58	0	0	0
36	0	0	0
71	0	0	0
41	0	0	0
74	0	0	0
39	0	0	0

SCALE: 1"=20' HOR.  
1"=10' VERT.

REVISIONS											
DATE	BY	DESCRIPTION	DATE	BY	DESCRIPTION	DATE	BY	DESCRIPTION	DATE	BY	DESCRIPTION

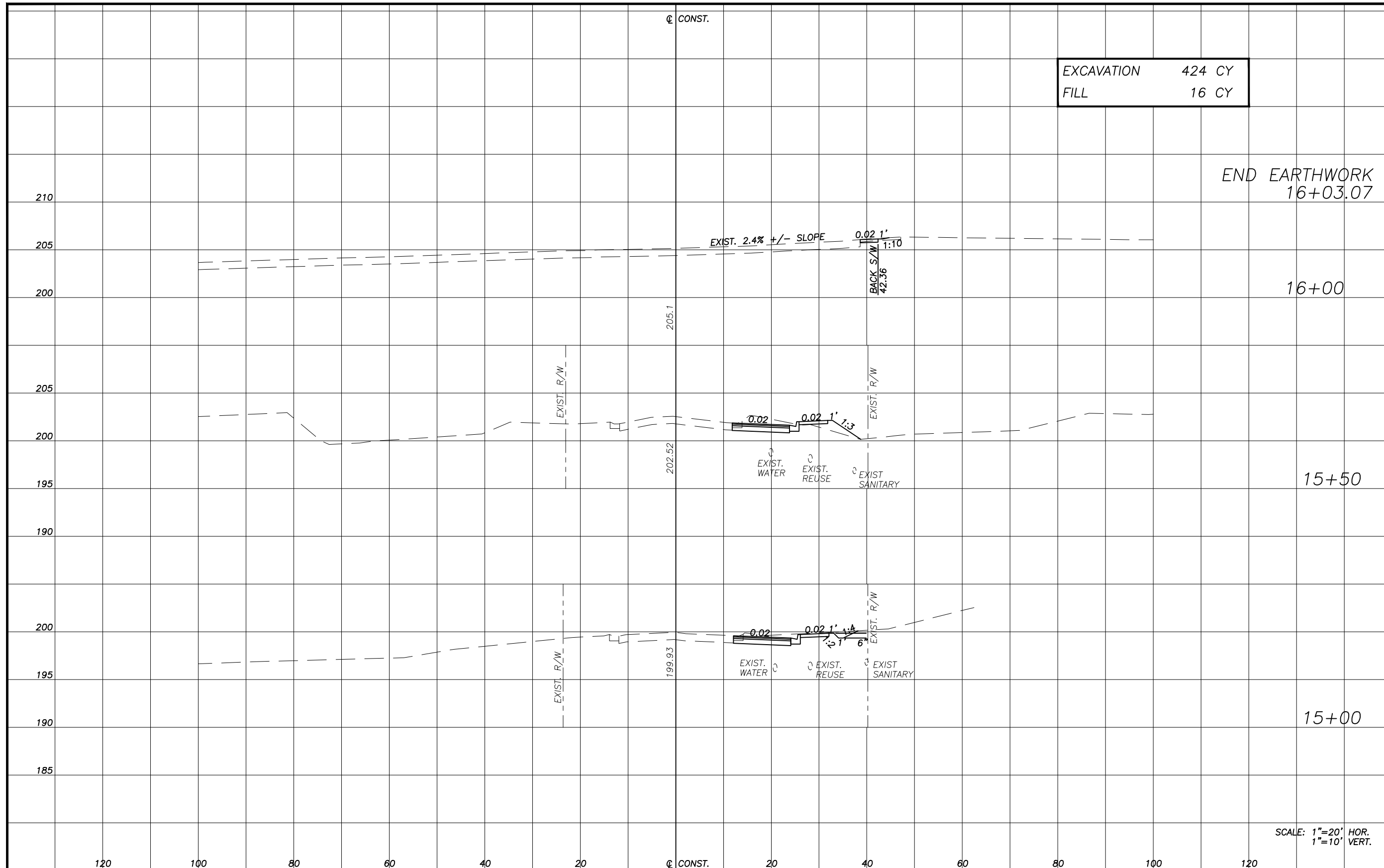
**AECOM**  
AECOM Technical Services  
212 East Main Street  
Bartow, FL 33830-4631  
ROBERT N. JULIUS, P.E. 54039

POLK COUNTY  
ROADS AND DRAINAGE  
APPROVED BY: \_\_\_\_\_ DATE: \_\_\_\_\_

# CENTRAL GROVE ROAD CROSS SECTION SHEET (3)

THE OFFICIAL RECORD OF THIS SHEET IS THE ELECTRONIC FILE DIGITALLY SIGNED AND SEALED UNDER RULE 61G15-23.004, F.A.C.

COUNTY PROJ. NO.	SHEET NO.
5400229	10



EXCAVATION 424 CY  
FILL 16 CY

END EARTHWORK  
16+03.07

EARTHWORK			
RDWY EXC		FILL	
A	V	A	V
0	0	0	0
1	1	0	0
13	13	6	6
17	17	6	6
33	33	6	6
19	19	0	0
43	43	0	0
27	27	0	0

REVISIONS											
DATE	BY	DESCRIPTION	DATE	BY	DESCRIPTION	DATE	BY	DESCRIPTION	DATE	BY	DESCRIPTION

**AECOM**  
AECOM Technical Services  
212 East Main Street  
Bartow, FL 33830-4631  
ROBERT N. JULIUS, P.E. 54039

POLK COUNTY  
ROADS AND DRAINAGE  
APPROVED BY: \_\_\_\_\_ DATE: \_\_\_\_\_

CENTRAL GROVE ROAD  
CROSS SECTION SHEET (4)

THE OFFICIAL RECORD OF THIS SHEET IS THE ELECTRONIC FILE DIGITALLY SIGNED AND SEALED UNDER RULE 61G15-23.004, F.A.C.

SUMMARY OF SIDEWALK & DETECTABLE WARNINGS							
LOCATION			SIDE	CONC SIDEWALK 4"		DETECTABLE WARNINGS	
				522-1		527-2	
STA. TO STA.				SY		SF	
	TO			P	F	P	F
10+73.11	TO	12+61.26	RT	104.4		10.0	
12+61.26	TO	15+71.15	RT	206.6			
NW QUADRANT			LT	16.2		128.0	
NE QUADRANT			LT	9.0		40.0	
SE QUADRANT			RT	5.0		52.0	
SW QUADRANT			RT	26.1		42.0	
SUB-TOTAL:				367.3		36.0	
TOTAL:				368		308.0	

SUMMARY OF PERFORMANCE TURF					
LOCATION			SIDE	PERFORMANCE TURF (SOD)	
				575-1-2	
STA. TO STA.				SY	
	TO			P	F
10+73.11	TO	15+81.57	RT	685.04	
SUB-TOTAL:				685.0	
TOTAL:				685	

SUMMARY OF PAVEMENT											
PAY ITEM NO.	PAY ITEM DESCRIPTION	LOCATION				SIDE	UNIT	QUANTITY		TOTAL	
		STA. TO STA.		DESCRIPTION	P			F	P	F	
			TO								
160-4	TYPE B STABILIZATION	12+53.87	TO	16+10.93		RT.	SY	525.9		526	
285-711	OPTIONAL BASE, BASE GROUP 11	12+53.87	TO	15+98.66		RT	SY	427.2		428	
327-70-6	MILLING EXISTING ASPHALT PAVEMENT, 1 1/2" AVG DEPTH	12+53.87	TO	15+97.24		LT/RT	SY	935.3		936	
327-70-11	MILLING EXISTING ASPHALT PAVEMENT, 2 1/4" AVG DEPTH	20+24.37	TO	25+74.74		LT/RT	SY	6020.2		6021	
334-1-13	SUPERPAVE ASPHALTIC CONC, TRAFFIC C	12+53.87	TO	15+98.66	2.0" 220lb/sy	LT/RT	TN	47.0		543.67	
		20+24.37	TO	25+74.74	1.5" 165lb/sy	LT/RT	TN	496.67			
337-7-25	ASPHALT CONCRETE FRICTION COURSE, FC 5, pg 76-22	20+24.37	TO	25+74.74	0.75"	LT/RT	TN	240.81		240.81	
337-7-83	ASPHALT CONCRETE FRICTION COURSE,TRAFFIC C, FC-12.5, PG 76-22	12+53.87	TO	15+98.66	1.5"	LT/RT	TN	112.41		112.41	

SUMMARY OF CURB & GUTTER													
PAY ITEM NO.	PAY ITEM DESCRIPTION	LOCATION			SIDE	UNIT	QUANTITY				TOTAL		
		STA. TO STA.					GROSS LENGTH	DEDUCTIONS		NET LENGTH		P	F
			TO					TYPE	LENGTH	P	F		
520-1-10	CONCRETE CURB & GUTTER, TYPE F	12+53.87	TO	15+71.15	RT.	LF	317.28			317.28		318	

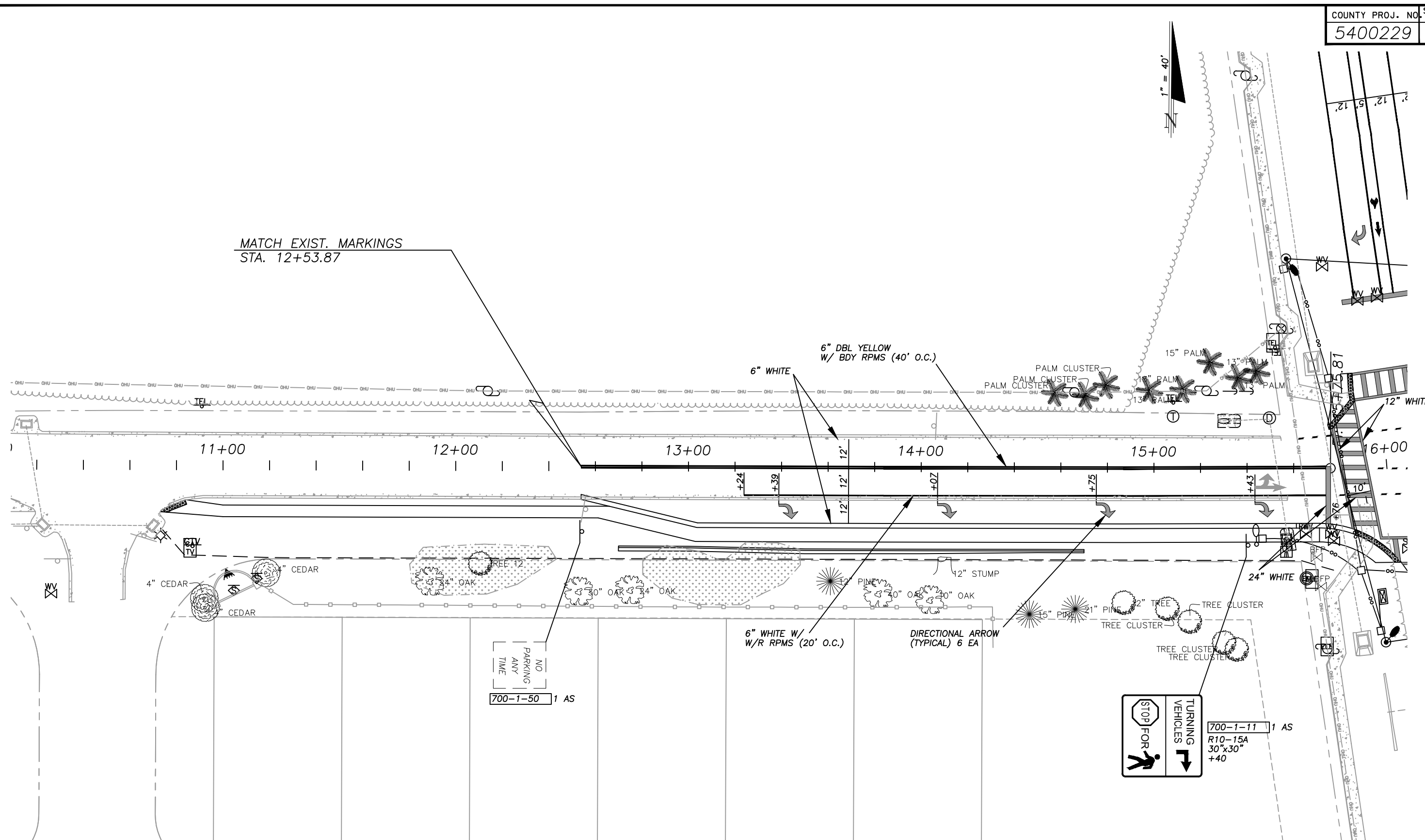
REVISIONS

DATE	BY	DESCRIPTION	DATE	BY	DESCRIPTION	DATE	BY	DESCRIPTION	DATE	BY	DESCRIPTION

**AECOM**  
 AECOM Technical Services  
 212 East Main Street  
 Bartow, FL 33830-4631  
 ROBERT N. JULIUS, P.E. 54039

POLK COUNTY  
 ROADS AND DRAINAGE  
 APPROVED BY: \_\_\_\_\_ DATE: \_\_\_\_\_

TIERRA DEL SOL  
 SUMMARY OF QUANTITIES



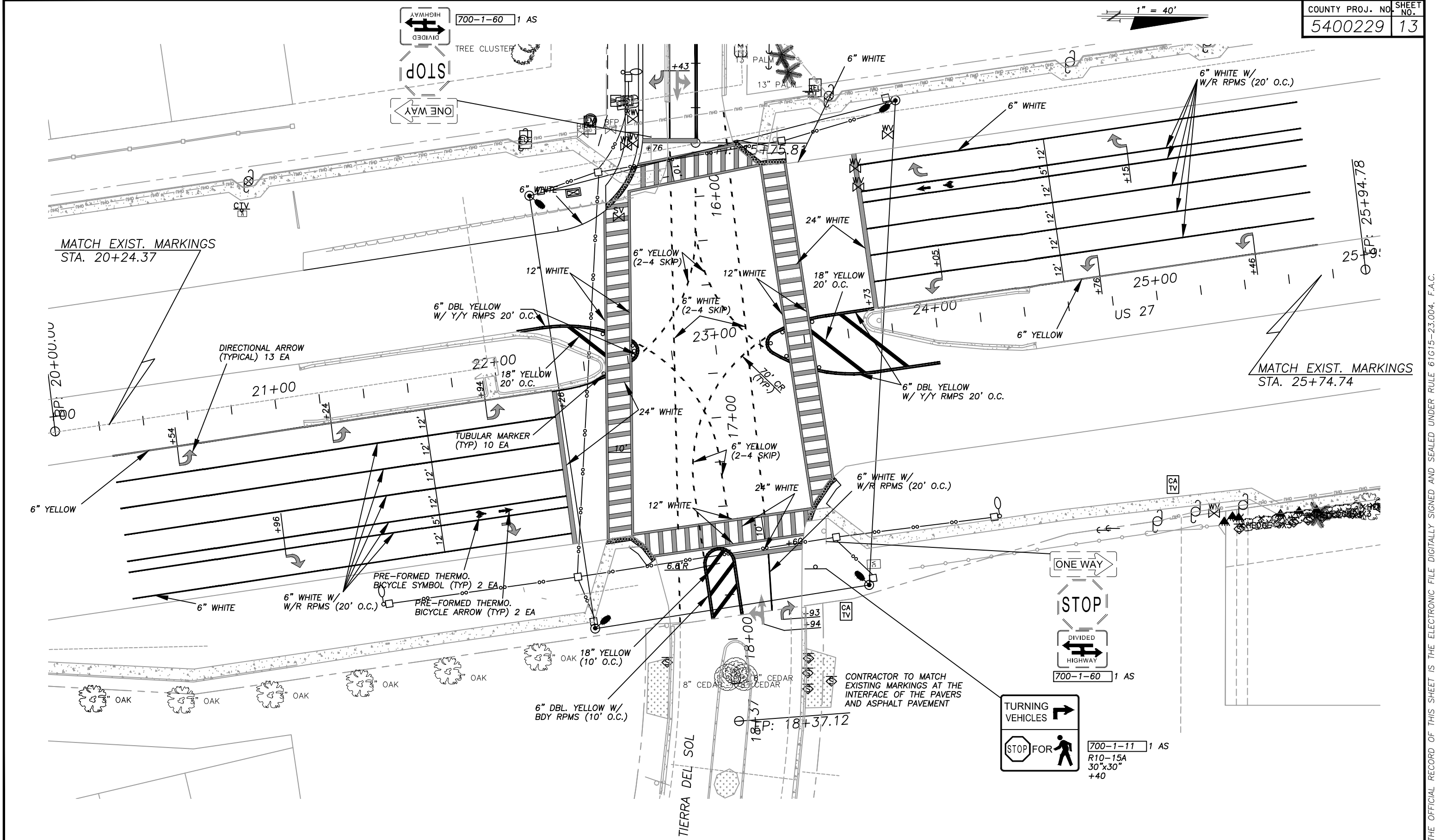
REVISIONS											
DATE	BY	DESCRIPTION	DATE	BY	DESCRIPTION	DATE	BY	DESCRIPTION	DATE	BY	DESCRIPTION

**AECOM**  
 AECOM Technical Services  
 212 East Main Street  
 Bartow, FL 33830-4631  
 ROBERT N. JULIUS, P.E. 54039

POLK COUNTY  
 ROADS AND DRAINAGE  
 APPROVED BY: \_\_\_\_\_ DATE: \_\_\_\_\_

CENTRAL GROVE RD.  
 SIGNING & MARKING PLAN (1)

THE OFFICIAL RECORD OF THIS SHEET IS THE ELECTRONIC FILE DIGITALLY SIGNED AND SEALED UNDER RULE 61G15-23.004, F.A.C.



REVISIONS											
DATE	BY	DESCRIPTION	DATE	BY	DESCRIPTION	DATE	BY	DESCRIPTION	DATE	BY	DESCRIPTION

**AECOM**  
 AECOM Technical Services  
 212 East Main Street  
 Bartow, FL 33830-4631  
 ROBERT N. JULIUS, P.E. 54039

POLK COUNTY  
 ROADS AND DRAINAGE  
 APPROVED BY: \_\_\_\_\_ DATE: \_\_\_\_\_

US 27  
 SIGNING & MARKING PLAN (02)

THE OFFICIAL RECORD OF THIS SHEET IS THE ELECTRONIC FILE DIGITALLY SIGNED AND SEALED UNDER RULE 61G15-23.004, F.A.C.

### TABULATION OF QUANTITIES

PAY ITEM NO.	DESCRIPTION	UNIT	SHEET NUMBERS												TOTAL THIS SHEET		GRAND TOTAL			
			18		19		20		21		22		23		24		PLAN	FINAL	PLAN	FINAL
			PLAN	FINAL	PLAN	FINAL	PLAN	FINAL	PLAN	FINAL	PLAN	FINAL	PLAN	FINAL						
630-2-11	CONDUIT, F&I, OPEN TRENCH	LF	1,208				415		600		487		600		473					
630-2-12	CONDUIT, F&I, DIRECTIONAL BORE	LF	373				25				116				127					
632-7-1	SIGNAL CABLE- NEW OR RECONSTRUCTED INTERSECTION, F&I	PI	1																	
633-1-121	FIBER OPTIC CABLE, F&I, UNDERGROUND, 2-12 FIBERS	LF					115													
633-1-123	FIBER OPTIC CABLE, F&I, UNDERGROUND, 49-96 FIBERS	LF					675		600		753		600		700					
633-2-31	FIBER OPTIC CONNECTION, INSTALL, SPLICE	EA					16													
633-3-11	FIBER OPTIC CONNECTION HARDWARE, F&I, SPLICE ENCLOSURE	EA					1													
633-3-12	FIBER OPTIC CONNECTION HARDWARE, F&I, SPLICE TRAY	EA					1													
633-3-13	FIBER OPTIC CONNECTION HARDWARE, F&I, PRETERMINATED CONNECTOR ASSEMBLY	EA					1													
633-3-14	FIBER OPTIC CONNECTION HARDWARE, F&I, BUFFER TUBE FAN OUT KIT	EA					1													
633-3-16	FIBER OPTIC CONNECTION HARDWARE, F&I, PATCH PANEL- FIELD TERMINATED	LF																		
633-8-1	MULTI-CONDUCTOR COMMUNICATION CABLE, FURNISH & INSTALL	PI																		
634-4-153	SPAN WIRE ASSEMBLY, F&I, TWO POINT, BOX OR DROP BOX	PI	1																	
635-2-11	PULL & SPLICE BOX, F&I, 13"X24" COVER SIZE	EA	16																	
635-2-12	PULL & SPLICE BOX, F&I, 24"X36" COVER SIZE	EA					1		1		2				2					
635-2-13	PULL & SPLICE BOX, F&I, 36" ROUND COVER SIZE	EA					1													
639-1-122	ELECTRICAL POWER SERVICE, F&I, UNDERGROUND, METER PURCHASED BY CONTRACTOR	EA	1																	
639-2-18	ELECTRICAL SERVICE WIRE, FURNISH & INSTALL	LF	16																	
641-2-11	PRESTRESSED CONCRETE POLE, F&I, TYPE P-II PEDESTAL	EA	1																	
641-2-18	PRESTRESSED CONCRETE POLE, F&I, TYPE P-VIII	EA	4																	
646-1-11	ALUMINUM SIGNALS POLE, F&I, PEDESTAL	EA	8																	
650-1-14	VEHICULAR TRAFFIC SIGNAL, F&I, ALUMINUM, 3 SECTION, 1 WAY	AS			14															
653-1-11	PEDESTRIAN SIGNAL, F&I, LED COUNTDOWN, 1 WAY	AS			8															
660-1-109	LOOP DETECTOR INDUCTIVE, F&I, TYPE 9	EA	11																	
660-1-110	LOOP DETECTOR INDUCTIVE, F&I, TYPE 10	EA	2																	
660-2-102	LOOP ASSEMBLY, F&I, TYPE B	AS	18																	
660-2-106	LOOP ASSEMBLY, F&I, TYPE F	AS	6																	
663-1-111	SIGNAL PRIORITY AND PREEMPTION SYSTEM, F&I, OPTICAL, CABINET ELECTRONICS	EA	1																	
663-1-112	SIGNAL PRIORITY AND PREEMPTION SYSTEM, F&I, OPTICAL, DETECTOR	EA	4																	
665-1-11	PEDESTRIAN DETECTOR, F&I, STANDARD	EA	8																	
670-5-112	TRAFFIC CONTROLLER ASSEMBLY, F&I, NEMA, 2 PREEMPTION	AS	1																	
682-1-133	ITS CCTV CAMERA, F&I, DOME ENCLOSURE - NON-PRESSURIZED, IP, HIGH DEFINITION	EA																		
684-1-1	MANAGED FIELD ETHERNET SWITCH WITH POWER CORD, F&I	EA					1													
685-1-13	UNINTERRUPTIBLE POWER SUPPLY, FURNISH AND INSTALL, LINE INTERACTIVE WITH CAB	EA	1																	
700-3-201	SIGN PANEL, FURNISH & INSTALL OVERHEAD MOUNT, UP TO 12 SF	EA			4															
700-5-22	INTERNALLY ILLUMINATED SIGN, F&I, OVERHEAD MOUNT, 12-18 SF	EA			4															
715-1-12	LIGHTING CONDUCTORS, F&I, INSULATED, NO.8 - 6	LF																		
715-5-31	LUMINAIRE & BRACKET ARM- ALUMINUM, F&I NEW LUMINAIRE AND ARM ON NEW POLE	EA																		
715-61-542	LIGHT POLE COMPLETE, F&I, STD POLE STD FDN, 50' MNTG HEIGHT, 12' ARM LENGTH	EA																		
715-500-1	POLE CABLE DISTRIBUTION SYSTEM, FURNISH AND INSTALL, CONVENTIONAL	EA																		

REVISIONS											
DATE	BY	DESCRIPTION	DATE	BY	DESCRIPTION	DATE	BY	DESCRIPTION	DATE	BY	DESCRIPTION

**AECOM** AECOM Technical Services  
 212 East Main Street  
 Bartow, FL 33830-4631  
 PATRICK B. NEVAH, P.E. 72369

POLK COUNTY  
 ROADS AND DRAINAGE  
 APPROVED BY: \_\_\_\_\_ DATE: \_\_\_\_\_

TIERRA DEL SOL  
 SIGNALIZATION QUANTITIES (1)

THE OFFICIAL RECORD OF THIS SHEET IS THE ELECTRONIC FILE DIGITALLY SIGNED AND SEALED UNDER RULE 61G15-23.004, F.A.C.

### TABULATION OF QUANTITIES

PAY ITEM NO.	DESCRIPTION	UNIT	SHEET NUMBERS												TOTAL THIS SHEET		GRAND TOTAL	
			25		26		36											
			PLAN	FINAL	PLAN	FINAL	PLAN	FINAL	PLAN	FINAL	PLAN	FINAL	PLAN	FINAL	PLAN	FINAL	PLAN	FINAL
630-2-11	CONDUIT, F&I, OPEN TRENCH	LF			425												425	4,208
630-2-12	CONDUIT, F&I, DIRECTIONAL BORE	LF			40		376										416	1,057
632-7-1	SIGNAL CABLE- NEW OR RECONSTRUCTED INTERSECTION, F&I	PI																1
633-1-121	FIBER OPTIC CABLE, F&I, UNDERGROUND, 2-12 FIBERS	LF			115												115	230
633-1-123	FIBER OPTIC CABLE, F&I, UNDERGROUND, 49-96 FIBERS	LF	600		750												1,350	4,678
633-2-31	FIBER OPTIC CONNECTION, INSTALL, SPLICE	EA			16												16	32
633-3-11	FIBER OPTIC CONNECTION HARDWARE, F&I, SPLICE ENCLOSURE	EA			1												1	2
633-3-12	FIBER OPTIC CONNECTION HARDWARE, F&I, SPLICE TRAY	EA			1												1	2
633-3-13	FIBER OPTIC CONNECTION HARDWARE, F&I, PRETERMINATED CONNECTOR ASSEMBLY	EA			1												1	2
633-3-14	FIBER OPTIC CONNECTION HARDWARE, F&I, BUFFER TUBE FAN OUT KIT	EA			1												1	2
633-3-16	FIBER OPTIC CONNECTION HARDWARE, F&I, PATCH PANEL- FIELD TERMINATED	EA			1												1	1
633-8-1	MULTI-CONDUCTOR COMMUNICATION CABLE, FURNISH & INSTALL	LF			102												102	102
634-4-153	SPAN WIRE ASSEMBLY, F&I, TWO POINT, BOX OR DROP BOX	PI																1
635-2-11	PULL & SPLICE BOX, F&I, 13"X24" COVER SIZE	EA					10										10	26
635-2-12	PULL & SPLICE BOX, F&I, 24"X36" COVER SIZE	EA			2												2	8
635-2-13	PULL & SPLICE BOX, F&I, 36" ROUND COVER SIZE	EA			1												1	2
639-1-122	ELECTRICAL POWER SERVICE, F&I, UNDERGROUND, METER PURCHASED BY CONTRACTOR	EA																1
639-2-1	ELECTRICAL SERVICE WIRE, FURNISH & INSTALL	LF																16
641-2-11	PRESTRESSED CONCRETE POLE, F&I, TYPE P-II PEDESTAL	EA																1
641-2-18	PRESTRESSED CONCRETE POLE, F&I, TYPE P-VIII	EA																4
646-1-11	ALUMINUM SIGNALS POLE, F&I, PEDESTAL	EA																8
650-1-14	VEHICULAR TRAFFIC SIGNAL, F&I, ALUMINUM, 3 SECTION, 1 WAY	AS																14
653-1-11	PEDESTRIAN SIGNAL, F&I, LED COUNTDOWN, 1 WAY	AS																8
660-1-109	LOOP DETECTOR INDUCTIVE, F&I, TYPE 9	EA																11
660-1-110	LOOP DETECTOR INDUCTIVE, F&I, TYPE 10	EA																2
660-2-102	LOOP ASSEMBLY, F&I, TYPE B	AS																18
660-2-106	LOOP ASSEMBLY, F&I, TYPE F	AS																6
663-1-111	SIGNAL PRIORITY AND PREEMPTION SYSTEM, F&I, OPTICAL, CABINET ELECTRONICS	EA																1
663-1-112	SIGNAL PRIORITY AND PREEMPTION SYSTEM, F&I, OPTICAL, DETECTOR	EA																4
665-1-11	PEDESTRIAN DETECTOR, F&I, STANDARD	EA																8
670-5-112	TRAFFIC CONTROLLER ASSEMBLY, F&I, NEMA, 2 PREEMPTION	AS																1
682-1-133	ITS CCTV CAMERA, F&I, DOME ENCLOSURE - NON-PRESSURIZED, IP, HIGH DEFINITION	EA			1												1	1
684-1-1	MANAGED FIELD ETHERNET SWITCH WITH POWER CORD, F&I	EA			1												1	2
685-1-13	UNINTERRUPTIBLE POWER SUPPLY, FURNISH AND INSTALL, LINE INTERACTIVE WITH CAB	EA																1
700-3-201	SIGN PANEL, FURNISH & INSTALL OVERHEAD MOUNT, UP TO 12 SF	EA																4
700-5-22	INTERNALLY ILLUMINATED SIGN, F&I, OVERHEAD MOUNT, 12-18 SF	EA																4
715-1-12	LIGHTING CONDUCTORS, F&I, INSULATED, NO.8 - 6	LF					2,775										2,775	2,775
715-5-31	LUMINAIRE & BRACKET ARM- ALUMINUM, F&I NEW LUMINAIRE AND ARM ON NEW POLE	EA					4										4	4
715-61-542	LIGHT POLE COMPLETE, F&I, STD POLE STD FDN, 50' MNTG HEIGHT, 12' ARM LENGTH	EA					3										3	3
715-500-1	POLE CABLE DISTRIBUTION SYSTEM, FURNISH AND INSTALL, CONVENTIONAL	EA					7										7	7

REVISIONS

DATE	BY	DESCRIPTION	DATE	BY	DESCRIPTION	DATE	BY	DESCRIPTION	DATE	BY	DESCRIPTION

**AECOM** AECOM Technical Services  
 212 East Main Street  
 Bartow, FL 33830-4631  
 PATRICK B. NEVAH, P.E. 72369

POLK COUNTY  
 ROADS AND DRAINAGE  
 APPROVED BY: DATE:

TIERRA DEL SOL  
 SIGNALIZATION QUANTITIES (2)

THE OFFICIAL RECORD OF THIS SHEET IS THE ELECTRONIC FILE DIGITALLY SIGNED AND SEALED UNDER RULE 61G15-23.004, F.A.C.

SIGNALIZATION PAY ITEM NOTES

1. 630-2-11, 630-2-12:  
IT SHOULD BE NOTED THAT NO TEST BORINGS WERE MADE WHERE CONDUIT RUNS ARE TO BE INSTALLED USING THE DIRECTIONAL BORE METHOD. THE COST OF THIS ITEM INCLUDES PAYMENT FOR ALL CONDUITS INSTALLED AS SHOWN IN THE PLANS. NO ADDITIONAL COMPENSATION WILL BE MADE FOR UNAUTHORIZED DIRECTIONAL BORE LENGTHS OR ADDITIONAL PULLS NEEDED TO INSTALL CONDUITS AS SHOWN.  
  
PAYMENT SHALL INCLUDE THE COST OF TRENCHING AND ALL CONDUIT IN TRENCH. ALL CONDUITS THAT WILL REMAIN EMPTY AS SPARES SHALL BE MANDREL TESTED, CLEANED INSIDE AND BOTH ENDS CAPPED. LEAVE THE CORROSION RESISTANT PULL/DRAW WIRE IN PLACE AND USE DUCT MARKERS , OR PULL BOXES TO MARK THE LOCATION OF THE ENDS OF CONDUIT.  
  
ALL CONDUITS SHALL BE 2" MINIMUM UNLESS OTHERWISE AUTHORIZED BY THE ENGINEER, AND SHALL BE INSTALLED WITH A MINIMUM OF 3 FOOT COVER. PAYMENT FOR CONDUIT SHALL BE LENGTH OF TRENCH FOR MULTIPLE RUNS OF CONDUIT.
2. 632-7-1:  
SIGNAL CABLE SHALL BE SPLICED TO A SEPARATE CABLE (FOR EACH SIGNAL HEAD) IN THE BASE OF MAST ARM STRUCTURES. EACH SEPARATE CABLE SHALL HAVE A MINIMUM OF 0.5' DIAMETER LOOP FOR FUTURE SPLICING. THE CABLES SHALL BE CONNECTED USING B-CAP (EPOXY FILLED) TWIST WIRE NUTS. A PERMANENT MARKING SHALL BE PLACED ON THE WIRE DESIGNATING THE PHASE USED. SPARE CONDUCTORS SHALL BE CONNECTED TOGETHER USING B-CAP (EPOXY FILLED) TWIST WIRE NUTS AND ARE GROUNDED INSIDE BASE OF POLE.  
  
THE COLOR CODE OF SIGNAL CABLE SHALL BE VERIFIED WITH POLK COUNTY TRAFFIC ENGINEERING AND OPERATIONS PRIOR TO WIRING INTERSECTION.  
  
POLK COUNTY TRAFFIC ENGINEERING AND OPERATIONS WIRING DIAGRAM SHALL BE USED WHEN WIRING SIGNALS.
3. 635-2-11, 635-2-12, AND 635-2-13:  
SHALL BE "QUAZITE", HAVE NON-CONDUCTIVE COVERS, AND MEET TIER 22 RATINGS. COVERS SHALL BE STAMPED "TRAFFIC SIGNALS".
4. 639-1-122:  
THIS ITEM SHALL INCLUDE THE COST OF ALL SPECIAL IMPACT CONNECTION FEES CHARGED BY LOCAL POWER COMPANIES FOR ELECTRICAL SERVICE CONNECTION.  
  
COST OF A SINGLE PHOTOCCELL AND WIRING TO OPERATE THE ILLUMINATED STREET NAME SIGNS SHALL BE INCLUDED UNDER THIS BID ITEM. ALL ABOVE GROUND CONDUIT SHALL BE RIGID ALUMINUM.
5. 639-2-1:  
PAYMENT OF THIS ITEM IS PER LENGTH OF COMPLETE WIRE RUN (ALL CONDUCTORS INCLUDED).
6. 639-2-11  
ELECTRICAL SERVICE DISCONNECT IS 100 AMP, COMPRISING OF A SIX (6) CIRCUIT DISCONNECT BOX WITH FOUR CIRCUIT BREAKERS, ONE 40 AMP/120 VOLT FOR CONTROLLER CABINET, ONE 15 AMP/120 VOLT FOR INTERNALLY ILLUMINATED STREET NAME SIGNS, ONE 30 AMP/120 VOLT FOR LIGHTING, AND ONE 15 AMP/120 VOLT FOR FUTURE USE.
7. 646-1-11  
ALUMINUM PEDESTALS SHALL BE INSTALLED ON A TRANSFORMER BASE.
8. 641-2-18:  
IT SHALL BE THE RESPONSIBILITY OF THE CONTRACTOR TO VERIFY THE SIGNAL POLE ELEVATIONS IN THE FIELD PRIOR TO ORDERING.
9. 650-1-14:  
ALL SIGNAL HEAD DISPLAYS SHALL BE LED. TUNNEL VISORS AND BACKPLATES ARE INCLUDED WITH THIS PAY ITEM.
10. 653-1-11:  
PEDESTRIAN SIGNALS SHALL BE COUNTDOWN WITH OVERLAY/FILLED/FILLED HAND AND PEDESTRIAN SYMBOLS, AND SHALL BE ON THE FDOT APPROVED PRODUCT LIST.

11. 663-1-111 AND 663-1-112:  
EMERGENCY PRE-EMPTION VEHICLE DETECTION UNIT ITEM SHALL INCLUDE DETECTORS AND ALL OTHER COMPONENTS, HARDWARE, INTERFACE PANELS, WIRING, ETC., TO PROVIDE FULLY FUNCTIONAL SYSTEM AND SHALL BE COMPATIBLE WITH THE CITY OF HAINES CITY SYSTEM. THE CONTRACTOR SHALL COORDINATE WITH THE MAINTAINING AGENCY FOR ACCEPTABLE UNIT AND SHALL BE LISTED ON THE FDOT APPROVED PRODUCT LIST.
12. 665-1-11:  
THIS ITEM SHALL INCLUDE ALL COST OF LABOR AND MATERIALS REQUIRED FOR INSTALLATION OF PEDESTRIAN ACTUATED SIGNAL SIGN R10-3i. PEDESTRIAN SIGNAL SIGN SHALL BE MOUNTED ABOVE THE PEDESTRIAN BUTTON. PEDESTRIAN ACTUATED SIGNAL SIGN R10-3i SHALL INCLUDE LOCAL STREET NAMES.
13. 670-5-112:  
CONTROLLER BASE SHALL BE POLYMER CONCRETE CONSTRUCTION AND SHALL BE INSTALLED IN ACCORDANCE WITH THE MANUFACTURER'S SPECIFICATIONS.  
  
PROVIDE TCS-TS-2 HYBRID TYPE VI CONTROLLER CABINET APL CERTIFICATION #676-034-003, WITH CUBIC-TS-2, TYPE II CONTROLLER APL CERTIFICATION #671-017-006. CABINET SHALL HAVE A WIRED IN 32 DETECTOR PANEL, AND 2 DETECTOR RACKS.  
  
THE CONTROLLER AND CABINET SHALL BE COMPATIBLE WITH THE EXISTING POLK COUNTY TRAFFIC ENGINEERING AND OPERATIONS COMPUTER SYSTEM. ALL LABOR AND MATERIALS (INCLUDING THE INTERFACE PANEL AND LIGHTNING ARRESTORS) NECESSARY FOR A COMPLETE AND ACCEPTABLE INSTALLATION SHALL BE INCLUDED IN THE PRICE FOR A CONTROLLER ASSEMBLY.  
  
COORDINATION UNITS SHALL HAVE CAPABILITIES OF GENERATING SEPARATE FORCE OFFS AND PERMISSIVE PERIODS FOR MOVEMENTS 1, 3, 4, 5, 7, AND/OR 8.  
  
BASE OF CONTROLLER TO BE SAME ELEVATION AS CENTER OF ROADWAY OR GREATER. THE MAXIMUM DISTANCE FROM THE TECHNICIAN PAD OR STEP TO THE FOUNDATION TOP IS 4". THE CABINET DOORS SHALL OPEN TOWARDS OR PARALLEL TO THE RIGHT-OF-WAY LINE AND AWAY FROM TRAFFIC.  
  
THE PHOTOCCELL FOR THE STREET NAME SIGNS SHALL BE LOCATED IN THE CONTROLLER CABINET WITH A PLEXIGLASS WINDOW. POWER SHALL BE CONTROLLED WITH A SWITCH WIRED FOR OFF/ON/AUTO OPERATION. THE PHOTOCCELL SHALL BE ORIENTED AWAY FROM VEHICLE HEAD LIGHTS.  
  
ALL CONTROLLER DOOR DIAGRAMS SHALL REFLECT CURRENT DATA.  
  
THIS ITEM SHALL INCLUDE ADDITIONAL COST OF CONCRETE, LABOR, AND OTHER MATERIALS FOR CONTROLLER BASE, PAD, AND STEPS AS REQUIRED.  
  
TRAFFIC SIGNAL CONTROLLER TO BE ADVANCED TRAFFIC CONTROLLER (ATC) STANDARD.
14. 682-1-33  
SHALL BE BOSCH VGS-ITS 1080P-30X4 AUTODOME 700 IP 36X NTSC HIGH PoE OR 24 VAC. A SEPARATE POWER CABLE FOR THE CCTV SHALL BE USED.
15. 685-1-13:  
ALL CONTROL CABINETS SHALL INCLUDE AN FDOT APPROVED UNINTERRUPTED POWER SUPPLY UNIT (UPS) WITH AN 8-HOUR RUN TIME AT 450 WATTS. UPS MUST HAVE ITS OWN STANDALONE CABINET SEPARATE FROM THE CONTROLLER CABINET. IT MUST ALSO BE CONNECTED SO THAT WE ARE ABLE TO PLUG A GENERATOR INTO THE GENERATOR SWITCH BOW WITHOUT REWIRING THE CABINET. INSTALL UPS UNIT IN ACCORDANCE WITH MANUFACTURES RECOMMENDATIONS. UPS UNIT SHALL BE COMPATIBLE WITH POLK COUNTY TRAFFIC ENGINEERING AND OPERATIONS SYSTEM.  
  
THE UNINTERRUPTED POWER SUPPLY (UPS) UNIT SHALL BE HOUSED IN A SEPARATE ENCLOSED CABINET WHICH IS DESIGNED TO HOUSE THE UPS ASSEMBLY. THIS PAY ITEM SHALL INCLUDE CABINET TO HOUSE THE UPS ASSEMBLY. THE TRAFFIC SIGNAL CABINET, IF BASE MOUNTED, CONCRETE BASE SHALL BE LARGE ENOUGH TO SUPPORT THE TRAFFIC SIGNAL AND THE UPS CABINET. PAYMENT FOR ADDITIONAL CONCRETE BASE, INCLUDING LABOR AND MATERIAL, SHALL BE INCLUDED IN TRAFFIC CONTROLLER ASSEMBLY PAY ITEM NUMBER.  
  
THE UPS SHALL MEET THE FOLLOWING REQUIREMENTS: MINIMUM OF FOUR 120V AC OUTLETS, 19" RACK MOUNTED, SEALED ABSORBENT GLASS MAT (AGM) TYPE, MAINTENANCE FREE BATTERIES, 10/100 BASE-T ETHERNET INTERFACE PORT, STATUS LIGHTS: POWER ON POWER SOURCE, AND OVERLOAD, ALARMS: AUDIBLE, MANUAL POWER ON/OFF SWITCH, OPERATE ALL DEVICES IN THE CABINET FOR A MINIMUM OF FOUR HOURS, OUTPUT VOLTAGE DISTORTION: LESS THAN 5 PERCENT, NOMINAL INPUT VOLTAGE: 90 TO 150 VAC, NOMINAL OUTPUT VOLTAGE:120 VAC SINE WAVE, OPERATING TEMPERATURE: 30 DEGREES F - 165 DEGREES F, REQUIREMENTS: OPERATING TEMPERATURE: 0 DEGREES F - 122 DEGREES F.
16. 700-5-22:  
THIS ITEM SHALL INCLUDE ALL LABOR AND MATERIALS INCLUDING SIGN ARM BRACKET, ALL SUPPORTING HARDWARE, AND WIRING NECESSARY TO MAKE A COMPLETE AND ACCEPTED INSTALLATION. ALL STREET NAME SIGNS SHALL BE INSTALLED ON A FDOT APPROVED STANDARD BRACKET ARM MOUNTED ON THE MAST ARM UPRIGHT UNLESS SPECIFIED OTHERWISE IN THE PLANS.

REVISIONS

DATE	BY	DESCRIPTION	DATE	BY	DESCRIPTION	DATE	BY	DESCRIPTION	DATE	BY	DESCRIPTION

**AECOM** Technical Services  
212 East Main Street  
Bartow, FL 33830-4631  
  
PATRICK B. NEVAH, P.E. 72369

POLK COUNTY  
ROADS AND DRAINAGE  
APPROVED BY: \_\_\_\_\_ DATE: \_\_\_\_\_

TIERRA DEL SOL  
SIGNALIZATION PAY ITEM NOTES

THE OFFICIAL RECORD OF THIS SHEET IS THE ELECTRONIC FILE DIGITALLY SIGNED AND SEALED UNDER RULE 61G15-23.004, F.A.C.



SIGNALIZATION GENERAL NOTES

1. THE CONTRACTOR SHALL MEET THE CRITERIA OUTLINED IN "2023-2024 FDOT STANDARD SPECIFICATIONS."
2. THE CONTRACTOR SHALL NOTIFY UTILITY OWNERS THROUGH SUNSHINE 811 (1-800-432-4770), AND SHALL NOTIFY UTILITY OWNERS TWO (2) FULL BUSINESS DAYS IN ADVANCE BEFORE BEGINNING CONSTRUCTION ON THE JOB SITE.
3. THE LOCATIONS OF UTILITIES SHOWN ON THE PLANS ARE APPROXIMATE. PRIOR TO DIGGING, THE CONTRACTOR SHALL DETERMINE THE EXACT LOCATIONS OF ALL UTILITIES.
4. INSURANCE AS REFERENCED IN SECTION 7-13.5 IN THE F.D.O.T. STANDARD SPECIFICATIONS FOR ROADWAY AND BRIDGE CONSTRUCTION (EDITION AS SHOWN ON KEY SHEET) SHALL BE PROVIDED BY THE CONTRACTOR WHEN INSTALLING OR WHEN WORKING ON OR IN THE VICINITY OF JOINT-USE POLES OR WHEN WORKING IN THE VICINITY OF POWER LINES.
5. THE CONTRACTOR SHALL CONTACT THE LOCAL POWER COMPANY FOR THEIR ASSISTANCE IN PERFORMING ALL NECESSARY WORK UNDER POWER LINES. SUCH WORK SHALL INCLUDE, BUT NOT BE LIMITED TO THE INSTALLATION OF SPAN WIRE, SIGNAL CABLE, FIBERGLASS INSULATORS, AND / OR SIGNAL POLES.
6. IT SHALL BE THE CONTRACTOR'S RESPONSIBILITY FOR HAVING UNDERGROUND CABLE AND UTILITIES LOCATED AND IDENTIFIED BY PROPER AUTHORITIES AT ALL CONSTRUCTION SITES.
7. THE CONTRACTOR SHALL USE THE F.D.O.T. STANDARD PLANS INDEX 102 FOR ALL MAINTENANCE OF TRAFFIC DURING CONSTRUCTION.
8. THE TYPE OF EQUIPMENT USED IN THE INSTALLATION OF MAST ARMS/FOUNDATIONS, OVERHEAD/CANTILEVER SIGNS/FOUNDATIONS, AND THE MOVEMENT/INSTALLATION OF STRAIN POLES SHALL MEET THE FOLLOWING REQUIREMENTS: 1) OVERHEAD LINES SHALL STAY IN PLACE BOTH VERTICALLY AND HORIZONTALLY. 2) CONTRACTOR SHALL MEET ALL APPLICABLE OSHA REQUIREMENTS (10' MINIMUM DISTANCE MAINTAINED BETWEEN THE EQUIPMENT AND THE ELECTRICAL OVERHEAD FACILITY). ANY COST ASSOCIATED WITH THIS TYPE OF EQUIPMENT REQUIRED FOR THIS INSTALLATION IS INCLUDED IN THE RELATED PAY ITEMS.
9. SIGNAL(S) SHALL BE PLACED IN FULL OPERATION ON A TUESDAY, WEDNESDAY OR THURSDAY BUT SHALL NOT BE PLACED IN FULL OPERATION ON THE DAY PRECEDING A HOLIDAY. FOR NEW SIGNALIZED INTERSECTIONS, THE SIGNALS SHALL FLASH FOR A MINIMUM OF 48 HOURS BEFORE BEING PLACED INTO FULL OPERATION. FLASHING SHALL NOT START ON A DAY PRECEDING A HOLIDAY.
10. AT LEAST 48 HOURS PRIOR TO BEGINNING THE TRAFFIC SIGNAL INSTALLATION, CONTRACTOR SHALL CONTACT:  
 POLK COUNTY TRAFFIC ENGINEERING AND OPERATIONS  
 300 SHEFFIELD ROAD, BUILDING D  
 WINTER HAVEN FLORIDA, 33880  
 PHONE: (863) 535-2200
11. POLK COUNTY SHALL BE THE MAINTAINING AGENCY FOR THE SIGNALIZATION.
12. TWO COPIES OF AS-BUILT PLANS WILL BE FURNISHED AT THE TIME OF FINAL INSPECTION TO POLK COUNTY TRAFFIC ENGINEERING AND OPERATIONS.
13. THE COST TO FURNISH AND INSTALL GROUNDING RODS, GROUND ROD WIRING AND ASSOCIATED CONNECTORS FOR CONTROLLER CABINETS, PULL BOXES, MAST ARM POLES, PEDESTALS AND POWER SERVICES SHALL BE INCLUDED IN THE COST OF THE PAY ITEM BEING GROUNDED.
14. PRIOR TO ALL TRAFFIC SIGNAL CHANGES (I.E., MAINTENANCE OF TRAFFIC CHANGES, NEW SIGNAL INSTALLATIONS, DIFFERENT PAVEMENT CONFIGURATIONS, ETC. CONTACT POLK COUNTY TRAFFIC ENGINEERING AND OPERATIONS, AT LEAST 48 HOURS IN ADVANCE FOR IMPLANTATION OF APPROPRIATE SIGNAL TIMINGS.
15. THE CONTRACTOR SHALL BE AWARE THAT NO TEST BORINGS WERE MADE WHERE CONDUIT, PULL BOXES, CONTROLLER FOUNDATIONS OR OTHER SIGNAL EQUIPMENT IS TO BE INSTALLED, THE CONTRACTOR SHALL BE RESPONSIBLE FOR EXAMINING THE JOB SITE CONDITIONS BEFORE SUBMITTING BID PROPOSALS IN ACCORDANCE WITH SECTION 2-4 OF FDOT STANDARD SPECIFICATIONS FOR ROAD AND BRIDGE CONSTRUCTION (CURRENT EDITION).
16. EXCEPT WHERE THE PLANS AND SPECIFICATIONS PROVIDE THAT SUCH WORK SHALL BE PERFORMED UNDER THE CONTRACT FOR THIS PROJECT, ALL UTILITIES INTERFERING WITH CONSTRUCTION SHALL BE REMOVED, RELOCATED OR ADJUSTED BY THEIR OWNERS, AT THEIR EXPENSE. THE CONTRACTOR SHALL ARRANGE HIS SCHEDULE TO ALLOW UTILITY OWNERS TIME FOR THE NECESSARY RELOCATION AND ADJUSTMENT OF UTILITIES AND RELATED STRUCTURES. THE FOLLOWING UTILITIES MAY HAVE LINES AND FACILITIES WITHIN THE PROJECT AREA.
  - 1) POLK COUNTY UTILITIES
  - 2) LAKELAND ELECTRIC
  - 3) FRONTIER
  - 4) CHARTER COMMUNICATIONS
  - 5) CITY OF LAKELAND
  - 6) TECO PEOPLES GAS
17. ALL SIGNAL EQUIPMENT MUST BE PRE-APPROVED IN WRITING BY POLK COUNTY TRAFFIC ENGINEERING AND OPERATIONS. THE CONTRACTOR MUST SUBMIT IN WRITING ALL EQUIPMENT FOR PRE-APPROVAL. POLK COUNTY WILL PROVIDE TRAFFIC SIGNAL REQUIREMENTS CUT SHEET UPON REQUEST FROM THE CONTRACTOR.
18. CCTV CAMERA SHALL BE INSTALLED, CONNECTION MADE TO EXISTING CELLULAR MODEM IN EXISTING CONTROLLER AT US 27 @ FOUR CORNERS BLVD. AND CONNECTIVITY ESTABLISHED PRIOR TO THE ACTIVATING OF THE NEW TRAFFIC SIGNAL. COORDINATE WITH POLK COUNTY TRAFFIC FOR MODEM CONNECTION.
19. AT THE COMPLETION OF THE PROJECT, PROVIDE AS-BUILT PLANS IN ELECTRONIC FORM (PDF) TO:  
 FDOT TRAFFIC OPERATIONS  
 NEAL TURNER, P.E. TSM&O ENGINEER-ARTERIALS  
 801 N. BROADWAY AVE.  
 P.O. BOX 1249  
 BARTOW, FL, 33830-1249  
 EMAIL: NEAL.TURNER@DOT.STATE.FL.US  
 PHONE: 863-519-2216
20. PLEASE HAVE PCMSs IN PLACE FOR A MINIMUM OF 14 DAYS BEFORE SIGNAL ACTIVATION AND 7 DAYS AFTER THE SIGNAL HAS BEEN ACTIVATED. ALSO, THE TRAFFIC SIGNAL WILL NEED TO BE IN FLASH FOR A MINIMUM OF 14 DAYS BEFORE SIGNAL ACTIVATION TOO. PLEASE USE THE FOLLOWING FOR THE PCMS MESSAGE:  
 MESSAGE 1 - "NEW SIGNAL XX/XX" (MONTH/DAY)  
 MESSAGE 2 - "PREPARE TO STOP"
21. STRUCTURAL CALCULATIONS AND SHOP DRAWINGS FOR THE ATTACHMENT OF THE CANTILEVER SIGN TO THE POLE SHALL BE SUBMITTED BY THE SPECIALTY ENGINEER LICENSED IN THE STATE OF FLORIDA FOR APPROVAL.
22. USE TERMINAL STRIP FOR ALL MAST ARM SPLICES IN THE POLE BASES. NO EPOXY FILLED CONNECTORS IN ANY OTHER SPLICES. (USE POLK COUNTY WIRING DIAGRAM)
23. ALL LOOP WIRES SHALL BE LABELED WITH PHASE NUMBER AT ALL SPLICE POINTS. USE 6' X 40' TYPE "F" LOOPS FOR SIDE STREET AND MAIN STREET LEFT TURN MOVEMENTS. PLACE LOOP 2' IN ADVANCE OF THE STOP BAR.

REVISIONS

DATE	BY	DESCRIPTION	DATE	BY	DESCRIPTION	DATE	BY	DESCRIPTION	DATE	BY	DESCRIPTION

**AECOM** AECOM Technical Services  
 212 East Main Street  
 Bartow, FL 33830-4631

POLK COUNTY  
 ROADS AND DRAINAGE

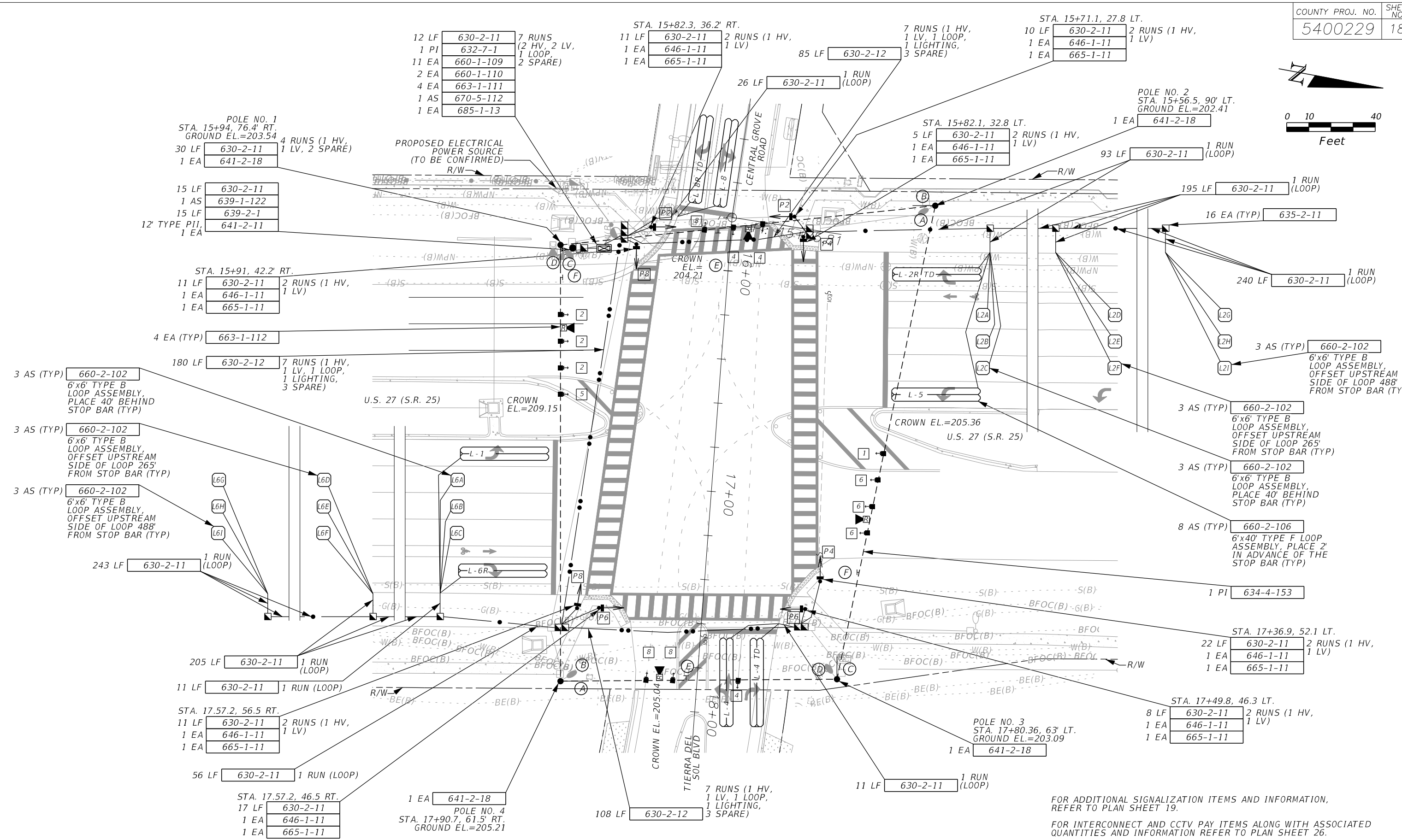
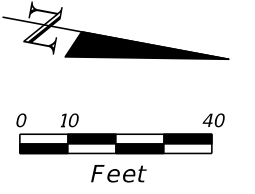
APPROVED BY: \_\_\_\_\_ DATE: \_\_\_\_\_

PATRICK B. NEVAH, P.E. 72369

TIERRA DEL SOL  
 SIGNALIZATION GENERAL NOTES

THE OFFICIAL RECORD OF THIS SHEET IS THE ELECTRONIC FILE DIGITALLY SIGNED AND SEALED UNDER RULE 61G15-23.004, F.A.C.

COUNTY PROJ. NO.	SHEET NO.
5400229	18



REVISIONS											
DATE	BY	DESCRIPTION	DATE	BY	DESCRIPTION	DATE	BY	DESCRIPTION	DATE	BY	DESCRIPTION

**AECOM** Technical Services  
 212 East Main Street  
 Bartow, FL 33830-4631  
 PATRICK B. NEVAH, P.E. 72369

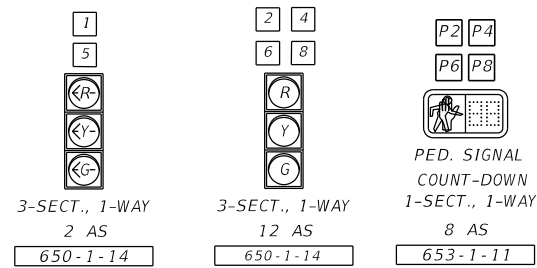
POLK COUNTY  
 ROADS AND DRAINAGE  
 APPROVED BY: \_\_\_\_\_ DATE: \_\_\_\_\_

FOR ADDITIONAL SIGNALIZATION ITEMS AND INFORMATION,  
 REFER TO PLAN SHEET 19.  
 FOR INTERCONNECT AND CCTV PAY ITEMS ALONG WITH ASSOCIATED  
 QUANTITIES AND INFORMATION REFER TO PLAN SHEET 26.

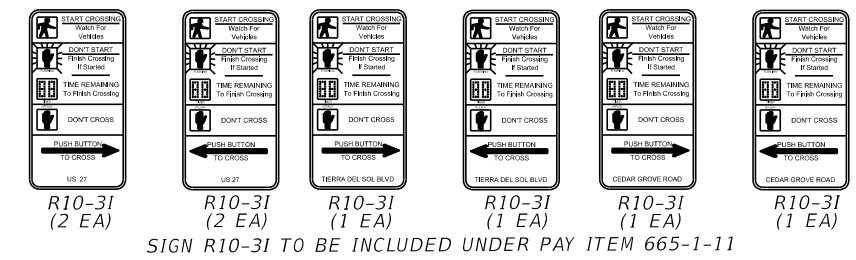
# TIERRA DEL SOL SIGNALIZATION PLAN

THE OFFICIAL RECORD OF THIS SHEET IS THE ELECTRONIC FILE DIGITALLY SIGNED AND SEALED UNDER RULE 61G15-23.004, F.A.C.

**SIGNAL HEAD DETAILS**



**PEDESTRIAN SIGN DETAILS**

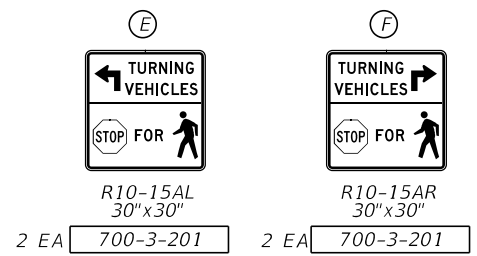


SIGN R10-31 TO BE INCLUDED UNDER PAY ITEM 665-1-11

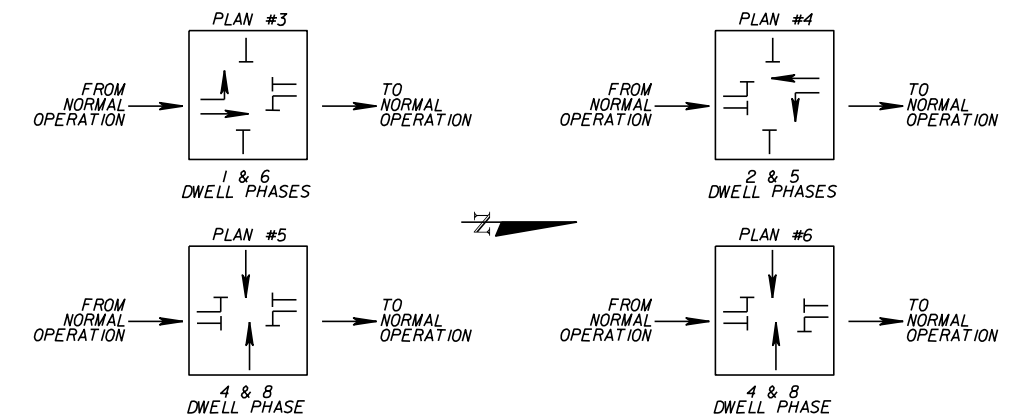
**CONTROLLER OPERATION NOTES:**

- MAJOR STREET IS U.S. 27, (S.R. 25) MOVEMENTS 1, 2, 5 AND 6 AND MINOR STREETS ARE TIERRA DEL SOL BLVD (MOVEMENT 4) AND CENTRAL GROVE ROAD (MOVEMENT 8). WHEN SIGNAL IS IN FLASHING MODE, MOVEMENTS 2 AND 6 SHALL FLASH YELLOW, MOVEMENTS 1, 5, 4 AND 8 SHALL FLASH RED.
- SIGNAL OPERATING PLAN NO. 7 SHALL BE USED WITH ACTUATED PEDESTRIAN TIMINGS FOR MOVEMENTS (P2), (P4) (P6) AND (P8).
- EACH PHASE/MOVEMENT SHALL BE WIRED FROM THE SIGNAL TO THE CONTROLLER AS A SEPARATE PHASE/MOVEMENT. THIS INCLUDES LEFT TURN MOVEMENTS, EACH LEFT TURN MOVEMENT SHALL HAVE CONDUCTORS AVAILABLE FOR PROTECTED AND PERMISSIVE OPERATIONS.
- POSTED SPEED LIMIT FOR US 27 IS 60 MPH. POSTED SPEED LIMIT FOR TIERRA DEL SOL BLVD/CEDAR GROVE ROAD IS 30 MPH.
- REQUEST UPDATED SIGNAL TIMINGS FROM FDOT TSM&O ENGINEER - ARTERIALS (863-519-2216) WHEN ALL LANES, STRIPING, SIGNALS AND PEDESTRIAN FACILITIES ARE IN THEIR FINAL CONFIGURATION AND THE SIGNAL IS OPERATING AS DESIGNED. PROVIDE FDOT WITH ALL 'AS-BUILT' INFORMATION NECESSARY TO DEVELOP THE BASIC SIGNAL TIMING PARAMETERS AND ALLOW THREE (3) WEEKS FOLLOWING THE REQUEST FOR FDOT TO DEVELOP THE UPDATED TIMINGS. PROGRAM THE CONTROLLER PER THE TIMINGS PROVIDED BY FDOT.

REFER TO STREET NAME SIGN WORKSHEETS  
4 EA 705-5-22  
OVERHEAD STREET NAME SIGNS TO BE TWO SIDED/BACK TO BACK

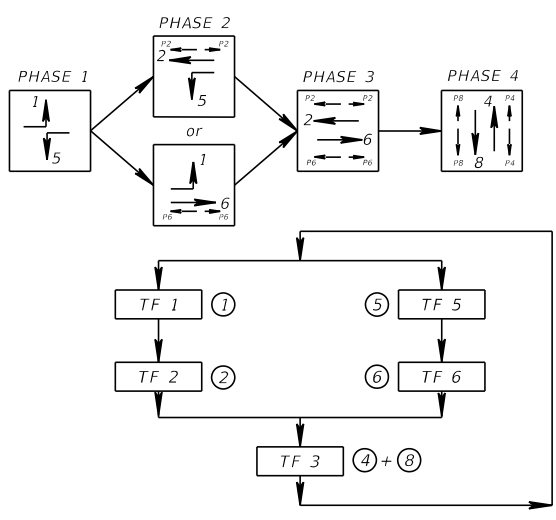


EMERGENCY VEHICLE PREEMPTION						
PREEMPTION TIMING PLAN	1	2	3(NB)	4(SB)	5(EB)	6(WB)
PRIORITY	-	-	6	6	6	6
DELAY BEFORE PREEMPTION (SEC.)	-	-	0	0	0	0
MIN GREEN BEFORE PREEMPTION (SEC.)	-	-	*	*	*	*
LOCK CALL	-	-	OFF	OFF	OFF	OFF
MAXIMUM PRESENCE (SEC.)	-	-	120	120	120	120
YELLOW CLEARANCE (SEC.)	-	-	**	**	**	**
RED CLEARANCE (SEC.)	-	-	**	**	**	**
DWELL PHASES	-	-	1 & 6	2 & 5	4 & 8	4 & 8
MINIMUM DWELL (SEC.)	-	-	15	15	7	7
YELLOW CLEARANCE (SEC.)	-	-	**	**	**	**
RED CLEARANCE (SEC.)	-	-	**	**	**	**
EXIT PHASES	-	-	2 & 6	2 & 6	2 & 6	2 & 6



\* ENTRY INTO PREEMPTION SHALL NOT VIOLATE MINIMUM GREEN OR PEDESTRIAN CLEARANCE INTERVALS.  
\*\* YELLOW AND ALL RED INTERVALS DURING PREEMPTION SHALL BE THE SAME VALUES USED DURING NORMAL CONTROLLER OPERATION.

**S.O.P. 7**



CONTROLLER TIMINGS								
MOVEMENT NO. (CONTROLLER PHASE)	1	2	3	4	5	6	7	8
DIRECTION	NBL	SB	-	EB	SBL	SB	-	WB
TURN TYPE	PROT	-	-	-	PROT	-	-	-
MINIMUM GREEN	5	15	-	7	5	15	-	7
EXTENSION	3.0	2.6	-	3.0	3.0	2.6	-	3.0
YELLOW	5.9	5.9	-	3.7	5.9	5.9	-	3.7
ALL RED	4.4	2.0	-	4.3	2.7	2.0	-	4.3
MAX I	30	90	-	30	30	90	-	30
MAX II	-	-	-	-	-	-	-	-
ADJUST BY	-	-	-	-	-	-	-	-
WALK	-	7	-	7	-	7	-	7
FLASHING DON'T WALK	-	15	-	44	-	22	-	44
DETECTOR MEMORY	-	-	-	-	-	-	-	-
DETECTOR CROSS SWITCH	-	-	-	-	-	-	-	-
DUAL ENTRY	-	ON	-	ON	-	ON	-	ON
RECALL	-	MIN	-	-	-	MIN	-	-

TIMINGS ARE INITIAL AND MAY REQUIRE FIELD ADJUSTING AS DIRECTED BY THE PROJECT ENGINEER.  
POSTED SPEED LIMIT FOR US 27 IS 60 MPH. POSTED SPEED LIMIT FOR TIERRA DEL SOL BLVD/CEDAR GROVE ROAD IS 30 MPH.

DETECTORS FOR LOOPS				
LOOP	NO. OF LOOPS	NO. OF NEW DETS.	CHANNEL NO.	DELAY TIME (SEC)
L-1	1		1	0
L-5	1	1	2	0
L-2A	1	1	1	0
L-2B	1	1	2	0
L-2C	1	1	1	0
L-2D	1	1	2	0
L-2E	1	1	1	0
L-2F	1	1	2	0
L-2G	1	1	1	0
L-2H	1	1	2	0
L-2I	1	1	1	0
L-6A	1	1	2	0

DELAY TIME IS INITIAL AND MAY REQUIRE FIELD ADJUSTING AS DIRECTED BY PROJECT ENGINEER.

DETECTORS FOR LOOPS				
LOOP	NO. OF LOOPS	NO. OF NEW DETS.	CHANNEL NO.	DELAY TIME (SEC)
L-6B	1		1	0
L-6C	1	1	2	0
L-6D	1		1	0
L-6E	1	1	2	0
L-6F	1		1	0
L-6G	1	1	2	0
L-6H	1		1	0
L-6I	1	1	2	0

DELAY TIME IS INITIAL AND MAY REQUIRE FIELD ADJUSTING AS DIRECTED BY PROJECT ENGINEER.

DETECTORS FOR LOOPS				
LOOP	NO. OF LOOPS	NO. OF NEW DETS.	CHANNEL NO.	DELAY TIME (SEC)
L-2R	1		1	0
L-6R	2	1	2	0
L-4	1		1	0
L-8	2	1	2	3
L-4R	1		1	8
L-8R	2	1	2	8

DELAY TIME IS INITIAL AND MAY REQUIRE FIELD ADJUSTING AS DIRECTED BY PROJECT ENGINEER.

REVISIONS									
DATE	BY	DESCRIPTION	DATE	BY	DESCRIPTION	DATE	BY	DESCRIPTION	DATE

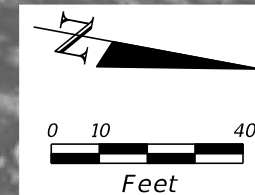
**AECOM** Technical Services  
212 East Main Street  
Bartow, FL 33830-4631  
PATRICK B. NEVAH, P.E. 72369

POLK COUNTY  
ROADS AND DRAINAGE  
APPROVED BY: DATE:

**TIERRA DEL SOL**  
**SIGNALIZATION DETAILS**

THE OFFICIAL RECORD OF THIS SHEET IS THE ELECTRONIC FILE DIGITALLY SIGNED AND SEALED UNDER RULE 61G15-23.004, F.A.C.

COUNTY PROJ. NO.	SHEET NO.
5400229	20



UTILIZE EXISTING SIGNAL CONTROLLER

12 EA	633-2-31	FO CONNECTION
1 EA	633-3-13	PRE-TERM CONN AS
1 EA	633-3-14	FAN OUT KIT
1 EA	633-3-16	PATCH PANEL-FIELD TERM
1 EA	684-1-1	ETHERNET SWITCH

15 LF	630-2-11	2 RUNS
15 LF	633-1-121	12 STR SM FOC
100 LF COIL	633-1-121	12 STR SM FOC
200 LF COIL	633-1-123	96 STR SM FOC
4 EA	633-2-31	FO CONNECTION
1 EA	633-3-11	SPLICE ENCLOSURE
1 EA	633-3-12	SPLICE TRAY
1 EA	635-2-13	SPLICE BOX

400 LF	630-2-11	2 RUNS
400 LF	633-1-123	96 STR SM FOC

25 LF	630-2-12	2 RUNS
25 LF	633-1-123	96 STR SM FOC

50 LF COIL	633-1-123	96 STR SM FOC
1 EA	635-2-12	



MATCH LINE SEE INTERCONNECT PLAN SHEET (2)

THE OFFICIAL RECORD OF THIS SHEET IS THE ELECTRONIC FILE DIGITALLY SIGNED AND SEALED UNDER RULE 61G15-23.004, F.A.C.

REVISIONS											
DATE	BY	DESCRIPTION	DATE	BY	DESCRIPTION	DATE	BY	DESCRIPTION	DATE	BY	DESCRIPTION

**AECOM** AECOM Technical Services  
 212 East Main Street  
 Bartow, FL 33830-4631

PATRICK B. NEVAH, P.E. 72369

POLK COUNTY  
 ROADS AND DRAINAGE

APPROVED BY: \_\_\_\_\_ DATE: \_\_\_\_\_

# TIERRA DEL SOL INTERCONNECT PLAN SHEET (1)