

Consultant Services Authorization-Modification

Firm Name:	Wright-Pierce, Inc.
Master Agreement No.:	18-067
CSA No.:	18-067-03
CSA Modification No.:	01
Project Name:	Upgrade Lift Station No. 253 (Providence)
Project Description:	Final design, bidding, permitting, and construction phase services to upgrade Lift Station No. 253
Project Exhibit Attachment	Exhibit "A"- Modified Scope of Services
Original # of days to complete project	1,117
# of days increased by previous modification (if applicable)	NA
Additional # of days for this Modification	151
Revised total # of days to complete project	1,268
Original Compensation	\$191,455
Net change by previous modifications	\$0
Compensation increase/decrease this Modification	\$30,076
Revised total compensation	221,531
Budget Source/Availability	42013.680536150.5666000.6842060

IN WITNESS WHEREOF, the parties hereto have executed this CSA Modification on this _____ day of _____, 20____.

Attest:

STACY M. BUTTERFIELD

By: _____

Deputy Clerk

Date Approved by County: _____

POLK COUNTY, a political subdivision
of the State of Florida

By: _____

_____, Chairman

Board of County Commissioners

Review as to form and legal sufficiency



County Attorney's Office Date _____

WRIGHT-PIERCE, INC.

CONSULTANT COMPANY NAME



Authorized Corporate Officer

STEVEN C. HALLIWELL

[Printed Name and Title] Date

VICE PRESIDENT 9-19-2023

Attest: 9/20/23

Corporate Secretary

Date

SEAL

Exhibit A
Consultant Services Authorization
18-067-03 Modification No. 1
Upgrade Lift Station No. 253 (Providence)

Wright-Pierce, Inc., (Consultant) entered into a Master Consulting Agreement (Agreement) with Polk County, Florida (County) on December 18, 2018. Pursuant to this Agreement, the County has requested that the Consultant provide certain professional services in support of the Upgrade Lift Station No. 253 (Providence) Project as further detailed in this Consultant Services Authorization.

A. Project Background and Description

The Upgrade Lift Station No. 253 (Providence) Project generally includes design and construction to replace the LS253 pumps, guide rails, piping, wet well lid, lift station slab, lift station fencing, electrical service, controls, and generator.

The Consultant completed the final design on March 17, 2021. Following completion of final design, the County requested revisions to the design to accommodate additional equipment, particularly a pad-mounted diesel-powered pump. These revisions were incorporated into the design during the construction phase of the project.

The Consultant Services Authorization was originally estimated to be complete in March 2022 and extended to September 29, 2023. The contract time for construction of this project is being extended to February 27, 2024. The contract time extension primarily is the result of significantly longer equipment lead times associated with the COVID-19 impacts on the manufacturing industry. This has resulted in additional required services. Consequently, this modification addresses the additional services which consist of additional project management, additional meetings, and additional site visits.

B. Scope of Services

Upon authorization to proceed from the County, the Consultant will provide the following identified services. The Consultant shall ensure that all design, bid, and construction documents produced by the Consultant or their subconsultants for the County will be consistent with the Polk County USSM, latest edition, and other County requirements. This authorization shall be in

full force and effect until the Consultant completes all services as described in the Consultant Services Authorization and any subsequent modifications hereto.

Phase 100 – Project Management

Task 101 – Project Management

This task consists of an additional twenty-one months of overall management of the Project including contract administration, budget management, invoicing, monthly status reports, scheduling, and coordination with the County and Consultant's subconsultants extending Projection Management service through the end of February 2024.

Task 102 –Meetings

No change.

Phase 200 – Support Services

No change.

Phase 300 – Preliminary Design

No change.

Phase 400 – Final Design Documents

No change.

Phase 500 – Permitting Services

No change.

Phase 600 – Bid Phase Services

No change.

Phase 700 – Construction Administration Services

These services will be performed during construction of the Project.

The construction duration was expected to complete August 19, 2023. The project construction has been extended, and the attached Modification No. 1 reflects the additional scope to be amended to the contract in addition to the originally proposed services.

Task 701 – Pre-Construction Meeting

No change.

Task 702 – Preliminary Matters and Contract Documents

No change.

Task 703 – Shop Drawing Review

No change.

Task 704 – Construction Progress Meetings

This tasks consists of attending an additional eleven (11) construction progress meetings.

Task 705 – Construction Site Visits

This tasks consists of conducting an additional four (4) site visits.

Task 706 – Applications for Payment

No change.

Task 707 – Requests for Information

No change.

Task 708 – Change Orders

No change.

Task 709 – Substantial Completion

No change.

Task 710 – Project Close-Out

No change.

C. Deliverables

No change.

D. Schedule

The projected schedule for the performance of services described herein is included as **Attachment A-1**. Delivery of the schedule may be in other electronic formats so long as they accurately portray the approved scope of services with sufficient detail subject to staff approval.

E. Compensation

This modification increases the compensation by a not-to-exceed cost of **\$30,076.00**.

Compensation for the services performed under this Consultant Services Authorization shall be on an hourly, not-to-exceed basis using the current hourly rate schedule as set forth in Master Consulting Agreement 18-067. Other direct costs or expenses incurred in connection with this Consultant Services Authorization will not be invoiced as these expenses have been accounted for in the rate multiplier associated with the Master Consulting Agreement referenced above. A summary of the estimated labor costs and reimbursable expenses is provided in **Attachment A-2** for reference only. Each invoice submittal shall include a tabular summary of the originally estimated labor costs by phase in accordance with **Attachment A-2**, fees invoiced to date, and the balance remaining per phase. The transfer of funds between defined phases is not permitted unless approved in advance in writing by the County Utilities Director. To request consideration for such a transfer, the Consultant must submit satisfactory written justification to transfer unused funds from phases with completed tasks or tasks clearly tracking under budget to phases with tasks requiring additional funding. In addition, the transfer of funds shall not exceed the total authorized fee for the Project.

The Consultant will minimally provide a consultant invoice summary with each invoice, based on a mutually agreed-upon breakdown of phases and tasks in **Attachment A-2** that reflect the effort and deliverables submitted to the County. The summary will depict the overall phases, associated budgets, amounts invoiced to date, and balance remaining. Invoices for compensation submitted by the Consultant will include the reviewed and approved consultant invoice summary, an updated Project schedule, applicable notarized affidavits, and the monthly status report.

Invoices for not-to-exceed projects shall be accompanied by time and task records for all billable hours appearing on the invoice. Additional documentation may be requested by the County and, if so requested, shall be furnished by the Consultant to the County Auditor's satisfaction. In addition, all invoices shall be submitted with the Consultant Services Authorization number,

purchase order number, and the Polk County Utilities Project and Records Room numbers on the invoice.

The Consultant agrees that, in the event that design errors and / or omissions are discovered during construction, all services rendered by the Consultant to correct said design errors and / or omissions will be considered out-of-scope services and shall not be invoiced to the County.

F. County's Responsibilities

The County will provide the following information to the Consultant and / or perform the following services related to the Project:

- Provide access to the site for all site visits.

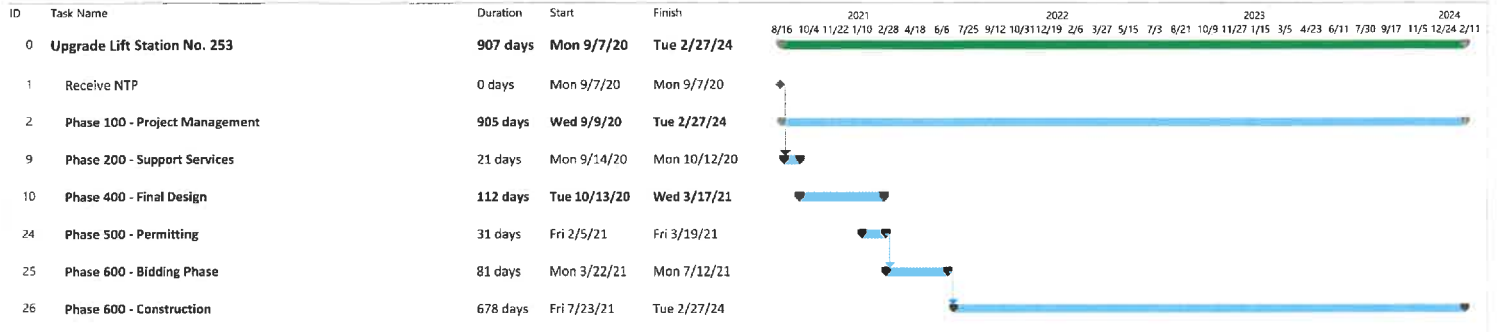
G. Assumptions

The Scope of Services and compensation arrangement outlined in this Consultant Services Authorization are based on the following assumptions:

- Construction is expected to be completed by February 2024.

The remainder of this page is intentionally left blank

ATTACHMENT A-1
CONSULTANT SERVICES AUTHORIZATION NO. 18-067-03 MODIFICATION NO. 1
BOARD OF COUNTY COMMISSIONERS OF POLK COUNTY
UPGRADE LIFT STATION NO. 253



Project: Upgrade Lift Station No. 253
Date: Tue 9/12/23

Project Summary



Phase/Task Summary



Subtask/Subtask Summary



Milestone



Polk County Utilities
Upgrade Lift Station No. 253 (Providence)
Consulting Fee Estimate

Phase and Task Descriptions	QA/QC Officer	Sen. Proj. Manager	Senior Engineer (I&C)	Senior Engineer (IS)	Senior Engineer (IS)	Project Engineer II (E)	Project Engineer I	CADD Designer	Admin. Asst.	Subtotal Labor Hours	Subtotal Labor Cost	Subconsultant(s)		Total Subconsultant Costs	Subtotal Fee
	Hours	Hours	Hours	Hours	Hours	Hours	Hours	Hours	Hours	Hours	Hours	L&S Fee	Madrid Fee		
PHASE 100 PROJECT MANAGEMENT															
Task 101 - Project Management		61								61	\$12,932			\$0.00	\$12,932.00
Task 101 - Meetings										0	\$0			\$0.00	\$0.00
PHASE 100 - TOTAL	0	61	0	0	0	0	0	0	0	61	\$12,932.00	\$0.00	\$0.00	\$0.00	\$12,932.00
PHASE 200 SUPPORT SERVICES															
Task 201 - Subsurface Utility Engineering										0	\$0			\$0.00	\$0.00
Task 202 - Land Surveying Services										0	\$0			\$0.00	\$0.00
Task 203 - Wetland Assessment / Delineation Services - NOT USED										0	\$0			\$0.00	\$0.00
Task 204 - Threatened and Endangered Species - NOT USED										0	\$0			\$0.00	\$0.00
Task 205 - Geotechnical Testing and Engineering										0	\$0			\$0.00	\$0.00
PHASE 200 - TOTAL	0	0	0	0	0	0	0	0	0	0	\$0	\$0.00	\$0.00	\$0.00	\$0.00
PHASE 300 - PRELIMINARY DESIGN															
NOT INCLUDED IN THE SCOPE OF SERVICES															
										0	\$0			\$0.00	\$0.00
										0	\$0			\$0.00	\$0.00
										0	\$0			\$0.00	\$0.00
PHASE 300 - TOTAL	0	0	0	0	0	0	0	0	0	0	\$0	\$0.00	\$0.00	\$0.00	\$0.00
PHASE 400 - FINAL DESIGN DOCUMENTS															
Task 401 - 60% Design Documents										0	\$0			\$0.00	\$0.00
Task 402 - 90 % Design Documents										0	\$0			\$0.00	\$0.00
Task 403 - 100% Design Documents - NOT USED										0	\$0			\$0.00	\$0.00
PHASE 400 - TOTAL	0	0	0	0	0	0	0	0	0	0	\$0	\$0.00	\$0.00	\$0.00	\$0.00
PHASE 500 - PERMITTING SERVICES															
Task 501 - FDEP Domestic Wastewater Permit										0	\$0			\$0.00	\$0.00
Task 502 - Environmental Resource Permitting										0	\$0			\$0.00	\$0.00
PHASE 500 - TOTAL	0	0	0	0	0	0	0	0	0	0	\$0	\$0.00	\$0.00	\$0.00	\$0.00
PHASE 600 - BID PHASE SERVICES															
Task 601 - Bid Documents										0	\$0			\$0.00	\$0.00
Task 602 - Pre-bid Meeting										0	\$0			\$0.00	\$0.00
Task 603 - Bid Addenda										0	\$0			\$0.00	\$0.00
Task 604 - Bid Recommendation										0	\$0			\$0.00	\$0.00
PHASE 600 - TOTAL	0	0	0	0	0	0	0	0	0	0	\$0	\$0.00	\$0.00	\$0.00	\$0.00
PHASE 700 - CONSTRUCTION ADMINISTRATION SERVICES															
Task 701 - Pre-Construction Meeting										0	\$0			\$0.00	\$0.00
Task 702 - Preliminary Matters and Contract Documents										0	\$0			\$0.00	\$0.00
Task 703 - Shop Drawing Review										0	\$0			\$0.00	\$0.00
Task 704 - Construction Progress Meetings		22				17	55		33	127	\$15,606			\$0.00	\$15,606.00
Task 705 - Construction Site Visits		4					8			10	\$1,538			\$0.00	\$1,538.00
Task 706 - Authorization for Payment										0	\$0			\$0.00	\$0.00
Task 707 - Requests for Information										0	\$0			\$0.00	\$0.00
Task 708 - Change Orders										0	\$0			\$0.00	\$0.00
Task 709 - Substantial Completion										0	\$0			\$0.00	\$0.00
Task 710 - Project Closeout										0	\$0			\$0.00	\$0.00
PHASE 700 - TOTAL	0	26	0	0	0	17	63	0	33	137	\$17,144	\$0.00	\$0.00	\$0.00	\$17,144.00
Subtotal	0	87	0	0	0	17	63	0	33	137	\$30,076.00	\$0.00	\$0.00	\$0.00	\$30,076.00
Contingency Funds															\$0.00
TOTAL															\$30,076.00



122 East Main Street #238
 Lakeland, FL 33801
 Phone: 407.906.1776 | Fax: 407.667.4799
www.wright-pierce.com

September 21, 2018

Eric W. Phillips
 Polk County Utilities
 Utilities Analyst
 1011 Jim Keene Blvd., SR540
 Winter Haven, FL33880

Subject: RFP 18-539, Utilities Design Services & Regulatory Support Services

Dear Mr. Phillips,

As requested, the following is our information regarding overhead multipliers and personnel hourly rates for the Utilities Design Services & Regulatory Support Services Contract with the Polk County. These hourly billing rates for individual classifications will be used through the duration of the Contract, unless otherwise agreed upon by both parties.

The Wright-Pierce standard multiplier is 3.08, which includes overhead, benefits, and our target profit goal. We have reduced our standard company profit target for this project to comply with the with PCU's recommended multiplier. Additionally, per direction from PCU, the multiplier has been increased by 0.05 to include reimbursable direct costs such as travel mileage, copies, shipping, etc. The calculation below provides the basis of our multiplier rate.

	<u>Wright-Pierce Standard</u>
Base Rate	1.00
Overhead and Fringe Benefits	<u>1.678</u>
Subtotal	2.678

Profit	0.3123
	(@12%)
Direct Costs/Reimbursables	0.05

Overall Total Multiplier	3.05



Raw and burdened (raw labor rate x 3.13 multiplier) hourly rates listed by labor classification are shown in Table 1. Table 2 provides descriptions of experience requirements and general duties by labor classification.

TABLE 1 – Labor Classification and Rate Development

Labor Classification	Raw Hourly Rate (\$) Low	Raw Hourly Rate (\$) High	Burdened Hourly Rate (\$) Low	Burdened Hourly Rate (\$) High
Principal	65	91	199	277
Technical Manager	61	86	187	263
Quality Control Officer	58	80	175	244
Client Service Manager	58	72	175	219
Sr. Project Manager	56	72	171	219
Lead Project Engineer	56	70	171	212
Senior Engineer	45	70	136	212
Project Manager	45	61	136	187
Project Engineer II	44	53	135	162
Project Engineer I	35	48	108	148
Senior Architect	40	58	122	175
Architect	35	44	108	134
Landscape Architect	36	48	110	147
Resident Project Representative	27	53	83	161
GIS Analyst	33	47	99	144
Senior Designer	33	47	99	144
Technician	25	37	75	113
GIS Technician	25	37	75	113
Intern	15	26	46	78
Sr. Administrator	21	37	63	112
Administrative Assistant	15	29	46	87



TABLE 2 – Labor Classification – Experience and General Duties

Labor Classification	Experience and General Duties
Principal	BS Engineering or related; 20+ years of experience; Licensed Professional Engineer or Geologist. Ensures proper company resource are available; provides technical guidance; manages overall performance.
Technical Manager	BS Engineering or related; 20+ years of experience; Licensed Professional Engineer or Geologist. Manages staff; oversees projects and Project Manager performance.
Quality Control Officer	BS Engineering or related; 20+ years of experience; Licensed Professional Engineer or Geologist. Oversees technical accuracy of projects and adherence to QAQC procedures.
Client Service Manager	BS Engineering or related; 15+ years of experience; Licensed Professional Engineer or Geologist. Ensures client expectations are met.
Sr. Project Manager	BS Engineering or related; 15+ years of experience; Licensed Professional Engineer or Geologist. Manages project quality, support and technical and financial performance of projects.
Lead Project Engineer	BS Engineering or related; 15+ years of experience; Licensed Professional Engineer or Geologist. Provide expert project support and provide technical guidance of staff. Develops, oversees and coordinates the technical aspects of the project.
Senior Engineer	BS Engineering or related; 10+ years of experience; Licensed Professional Engineer or Geologist. Provide expert project support and provide technical guidance of staff in respective discipline. Develops, oversees and coordinates the technical aspects of the project in respective discipline.
Project Manager	BS Engineering or related; 8+ years of experience; Licensed Professional Engineer or Geologist. Manages project quality, support and technical and financial performance of projects.
Project Engineer II	BS Engineering or related; 5+ years of experience; Licensed Professional Engineer or Geologist. Provide technical project support and guidance of staff. Develops technical aspects of the project in the respective discipline.
Project Engineer I	BS Engineering or related. Provides technical project support. Develops technical aspects of the project in the respective discipline.
Senior Architect	BS Architecture or related; 10+ years of experience; Licensed Professional Architect or Engineer. Provide expert project support and provide technical guidance of staff. Develops, oversees and coordinates the architectural aspects of the project.
Architect	BS Architecture or related. Provide technical project support. Develops technical architectural aspects of the project.
Landscape Architect	BS Landscape Architecture or related. Provide technical project support. Develops technical aspects of the project in the respective discipline.
Resident Project Representative	BS in Engineering or related or HS diploma plus 3-8+ years construction, construction observation, or related experience. Observe and document on-site construction activities; provide technical support on construction administration issues.
GIS Analyst	BS/BA in Geography, Computer Science, or related field; 5+ years' experience using ESRI software. Prepare maps and other special data in digital or graphic forms using GIS applications.



Labor Classification	Experience and General Duties
Senior Designer	HS diploma plus 6+ years drawing or related experience; extensive knowledge and experience with AutoCAD or MicroStation. Supports staff to identify, research, and solve technical issues.
Technician	HS diploma plus 1+ year of drawing or related experience; knowledge and experience with AutoCAD or MicroStation. Drafts detailed construction drawings, plans and figures for projects.
GIS Technician	HS diploma plus 1+ year of drawing or related experience; knowledge and experience with GIS. Performs data migration; data digitizing; prepares and alters terrain maps, charts, tables, drawings, and models; observes and records field data.
Intern	HS diploma and pursuing career in engineering or other related field. Support staff to identify, research, and solve technical issues.
Sr. Administrator	BA/BS or HS diploma plus 8+ years of experience. Perform advanced administrative tasks that support project.
Administrative Assistant	HS diploma plus 1+ years of experience. Perform administrative tasks that support project.

We look forward to work with Polk County on this continuing services projects and appreciate the selecting us. Please do not hesitate to contact me (steve.hallowell@wright-pierce.com) or Katie Gierok (Kathleen.Gierok@wright-pierce.com) if you need further assistance.

Sincerely,

WRIGHT-PIERCE

Steven C. Hallowell, P.E.
Vice President

cc: Dennis Davis, P.E.
Kathleen Gierok, P.E.

ACORD™

CERTIFICATE OF LIABILITY INSURANCE

DATE (MM/DD/YYYY)

12/13/2022

THIS CERTIFICATE IS ISSUED AS A MATTER OF INFORMATION ONLY AND CONFERS NO RIGHTS UPON THE CERTIFICATE HOLDER. THIS CERTIFICATE DOES NOT AFFIRMATIVELY OR NEGATIVELY AMEND, EXTEND OR ALTER THE COVERAGE AFFORDED BY THE POLICIES BELOW. THIS CERTIFICATE OF INSURANCE DOES NOT CONSTITUTE A CONTRACT BETWEEN THE ISSUING INSURER(S), AUTHORIZED REPRESENTATIVE OR PRODUCER, AND THE CERTIFICATE HOLDER.

IMPORTANT: If the certificate holder is an ADDITIONAL INSURED, the policy(ies) must have ADDITIONAL INSURED provisions or be endorsed. If SUBROGATION IS WAIVED, subject to the terms and conditions of the policy, certain policies may require an endorsement. A statement on this certificate does not confer any rights to the certificate holder in lieu of such endorsement(s).

PRODUCER Edgewood Partners Ins. Center 3780 Mansell Rd. Suite 370 Alpharetta, GA 30022	CONTACT NAME: Jerry Noyola PHONE (A/C, No, Ext): 770-220-7699 FAX (A/C, No): E-MAIL ADDRESS: jerry.noyola@greyling.com INSURER(S) AFFORDING COVERAGE INSURER A: Hartford Underwriters Insurance Company NAIC # 30104 INSURER B: Hartford Fire Insurance Company 19682 INSURER C: Nutmeg Insurance Company 39608 INSURER D: INSURER E: INSURER F:
INSURED Wright-Pierce 600 Federal Street Andover, MA 01810	

COVERAGES

CERTIFICATE NUMBER: 23-24

REVISION NUMBER:

THIS IS TO CERTIFY THAT THE POLICIES OF INSURANCE LISTED BELOW HAVE BEEN ISSUED TO THE INSURED NAMED ABOVE FOR THE POLICY PERIOD INDICATED. NOTWITHSTANDING ANY REQUIREMENT, TERM OR CONDITION OF ANY CONTRACT OR OTHER DOCUMENT WITH RESPECT TO WHICH THIS CERTIFICATE MAY BE ISSUED OR MAY PERTAIN, THE INSURANCE AFFORDED BY THE POLICIES DESCRIBED HEREIN IS SUBJECT TO ALL THE TERMS, EXCLUSIONS AND CONDITIONS OF SUCH POLICIES. LIMITS SHOWN MAY HAVE BEEN REDUCED BY PAID CLAIMS.

INSR LTR	TYPE OF INSURANCE	ADDL SUBR INSR WVD	POLICY NUMBER	POLICY EFF (MM/DD/YYYY)	POLICY EXP (MM/DD/YYYY)	LIMITS
A	<input checked="" type="checkbox"/> COMMERCIAL GENERAL LIABILITY <input type="checkbox"/> CLAIMS-MADE <input checked="" type="checkbox"/> OCCUR GEN'L AGGREGATE LIMIT APPLIES PER: <input type="checkbox"/> POLICY <input checked="" type="checkbox"/> PRO-JECT <input checked="" type="checkbox"/> LOC OTHER:		20SBWAP6AAL	01/01/2023	01/01/2024	EACH OCCURRENCE \$1,000,000 DAMAGE TO RENTED PREMISES (Ea occurrence) \$1,000,000 MED EXP (Any one person) \$10,000 PERSONAL & ADV INJURY \$1,000,000 GENERAL AGGREGATE \$2,000,000 PRODUCTS - COMP/OP AGG \$2,000,000 \$
C	AUTOMOBILE LIABILITY <input checked="" type="checkbox"/> ANY AUTO OWNED AUTOS ONLY <input checked="" type="checkbox"/> HIRED AUTOS ONLY <input checked="" type="checkbox"/> SCHEDULED AUTOS NON-OWNED AUTOS ONLY		20UEGEI3499	01/01/2023	01/01/2024	COMBINED SINGLE LIMIT (Ea accident) \$1,000,000 BODILY INJURY (Per person) \$ BODILY INJURY (Per accident) \$ PROPERTY DAMAGE (Per accident) \$ \$
A	<input checked="" type="checkbox"/> UMBRELLA LIAB <input checked="" type="checkbox"/> OCCUR <input type="checkbox"/> EXCESS LIAB <input type="checkbox"/> CLAIMS-MADE DED <input checked="" type="checkbox"/> RETENTION \$10,000		20SBWAP6AAL	01/01/2023	01/01/2024	EACH OCCURRENCE \$10,000,000 AGGREGATE \$10,000,000 \$
B	WORKERS COMPENSATION AND EMPLOYERS' LIABILITY ANY PROPRIETOR/PARTNER/EXECUTIVE OFFICER/MEMBER EXCLUDED? (Mandatory in NH) If yes, describe under DESCRIPTION OF OPERATIONS below	Y/N N	20WEGAP5YF8	01/01/2023	01/01/2024	<input checked="" type="checkbox"/> PER STATUTE <input type="checkbox"/> OTHER E.L. EACH ACCIDENT \$1,000,000 E.L. DISEASE - EA EMPLOYEE \$1,000,000 E.L. DISEASE - POLICY LIMIT \$1,000,000

DESCRIPTION OF OPERATIONS / LOCATIONS / VEHICLES (ACORD 101, Additional Remarks Schedule, may be attached if more space is required)

RE: CSA 18-067-03 Upgrade Lift Station No. 253 (Providence). Polk County, a political subdivision of the State of Florida is named as an Additional Insured with respects to General & Automobile Liability where required by written contract. Waiver of Subrogation is applicable where required by written contract & allowed by law. Should any of the above described policies be cancelled by the issuing insurer before the expiration date thereof, we will endeavor to provide 30 days' written notice (except 10 days for nonpayment (See Attached Descriptions)

CERTIFICATE HOLDER

CANCELLATION

Polk County, A Political Subdivision
 of the State of Florida
 330 W. Church Street, MC #AS05
 Bartow, FL 33830

SHOULD ANY OF THE ABOVE DESCRIBED POLICIES BE CANCELLED BEFORE THE EXPIRATION DATE THEREOF, NOTICE WILL BE DELIVERED IN ACCORDANCE WITH THE POLICY PROVISIONS.

AUTHORIZED REPRESENTATIVE

D.H. Gilling



CERTIFICATE OF LIABILITY INSURANCE

DATE (MM/DD/YYYY)

12/13/2022

THIS CERTIFICATE IS ISSUED AS A MATTER OF INFORMATION ONLY AND CONFERS NO RIGHTS UPON THE CERTIFICATE HOLDER. THIS CERTIFICATE DOES NOT AFFIRMATIVELY OR NEGATIVELY AMEND, EXTEND OR ALTER THE COVERAGE AFFORDED BY THE POLICIES BELOW. THIS CERTIFICATE OF INSURANCE DOES NOT CONSTITUTE A CONTRACT BETWEEN THE ISSUING INSURER(S), AUTHORIZED REPRESENTATIVE OR PRODUCER, AND THE CERTIFICATE HOLDER.

IMPORTANT: If the certificate holder is an **ADDITIONAL INSURED**, the policy(ies) must have **ADDITIONAL INSURED** provisions or be endorsed. If **SUBROGATION IS WAIVED**, subject to the terms and conditions of the policy, certain policies may require an endorsement. A statement on this certificate does not confer rights to the certificate holder in lieu of such endorsement(s).

PRODUCER Ames & Gough 859 Willard Street Suite 320 Quincy, MA 02169	CONTACT NAME: PHONE (A/C, No, Ext): (617) 328-6555 FAX (A/C, No): (617) 328-6888 E-MAIL ADDRESS: boston@amesgough.com
INSURER(S) AFFORDING COVERAGE	
INSURER A : Berkshire Hathaway Specialty Insurance Company 22276	
INSURER B :	
INSURER C :	
INSURER D :	
INSURER E :	
INSURER F :	

COVERAGES **CERTIFICATE NUMBER:** **REVISION NUMBER:**

THIS IS TO CERTIFY THAT THE POLICIES OF INSURANCE LISTED BELOW HAVE BEEN ISSUED TO THE INSURED NAMED ABOVE FOR THE POLICY PERIOD INDICATED. NOTWITHSTANDING ANY REQUIREMENT, TERM OR CONDITION OF ANY CONTRACT OR OTHER DOCUMENT WITH RESPECT TO WHICH THIS CERTIFICATE MAY BE ISSUED OR MAY PERTAIN, THE INSURANCE AFFORDED BY THE POLICIES DESCRIBED HEREIN IS SUBJECT TO ALL THE TERMS, EXCLUSIONS AND CONDITIONS OF SUCH POLICIES. LIMITS SHOWN MAY HAVE BEEN REDUCED BY PAID CLAIMS.

INSR LTR	TYPE OF INSURANCE	ADDL SUBR INSD WVD	POLICY NUMBER	POLICY EFF (MM/DD/YYYY)	POLICY EXP (MM/DD/YYYY)	LIMITS	
	COMMERCIAL GENERAL LIABILITY					EACH OCCURRENCE \$	
	CLAIMS-MADE OCCUR					DAMAGE TO RENTED PREMISES (Ea occurrence) \$	
						MED EXP (Any one person) \$	
						PERSONAL & ADV INJURY \$	
	GEN'L AGGREGATE LIMIT APPLIES PER:					GENERAL AGGREGATE \$	
	POLICY PROJECT LOC					PRODUCTS - COMP/OP AGG \$	
	OTHER:					\$	
	AUTOMOBILE LIABILITY					COMBINED SINGLE LIMIT (Ea accident) \$	
	ANY AUTO					BODILY INJURY (Per person) \$	
	OWNED AUTOS ONLY SCHEDULED AUTOS					BODILY INJURY (Per accident) \$	
	HIRED AUTOS ONLY NON-OWNED AUTOS ONLY					PROPERTY DAMAGE (Per accident) \$	
						\$	
	UMBRELLA LIAB OCCUR					EACH OCCURRENCE \$	
	EXCESS LIAB CLAIMS-MADE					AGGREGATE \$	
	DED RETENTION \$					\$	
	WORKERS COMPENSATION AND EMPLOYERS' LIABILITY	Y / N				PER STATUTE OTH-ER	
	ANY PROPRIETOR/PARTNER/EXECUTIVE OFFICER/MEMBER EXCLUDED? (Mandatory in NH)	N / A				E.L. EACH ACCIDENT \$	
	If yes, describe under DESCRIPTION OF OPERATIONS below					E.L. DISEASE - EA EMPLOYEE \$	
						E.L. DISEASE - POLICY LIMIT \$	
A	Professional Liab.	X	47EPP31360303	1/1/2023	1/1/2024	Per Claim Limit	5,000,000
A			47EPP31360303	1/1/2023	1/1/2024	Aggregate Limit	5,000,000

DESCRIPTION OF OPERATIONS / LOCATIONS / VEHICLES (ACORD 101, Additional Remarks Schedule, may be attached if more space is required)
 All Coverages are in accordance with the policy terms and conditions.

RE: CSA 18-067-03 - Project: Upgrade Lift Station No. 253 (Providence)

Waiver of Subrogation and 30 Day Notice of Cancellation will be issued in accordance with policy terms and conditions.

CERTIFICATE HOLDER

CANCELLATION

Polk County, A Political Subdivision of
 the State of Florida
 330 W. Church Street MC #AS05
 Bartow, FL 33830

SHOULD ANY OF THE ABOVE DESCRIBED POLICIES BE CANCELLED BEFORE THE EXPIRATION DATE THEREOF, NOTICE WILL BE DELIVERED IN ACCORDANCE WITH THE POLICY PROVISIONS.

AUTHORIZED REPRESENTATIVE

Gared Maxwell