

# PLAT OF SURVEY

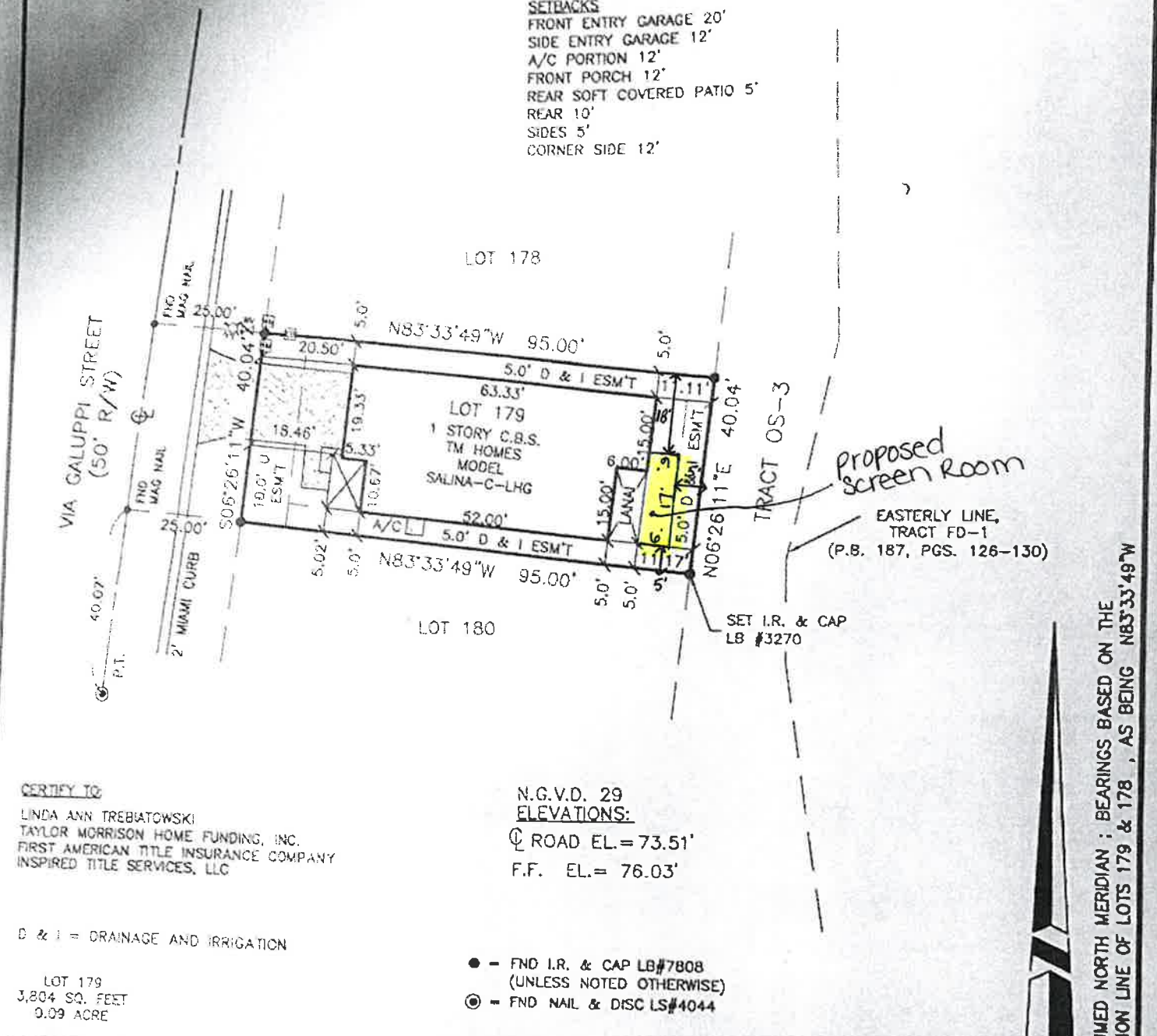
## LEGAL DESCRIPTION:

LOT 179, SOLIVITA PHASE 5D, AS RECORDED IN PLAT BOOK 195, PAGES 31-33, OF THE OFFICIAL RECORDS OF POLK COUNTY, FLORIDA.

NOTE: According to the Federal Emergency Management Agency Firm Map No. 12105C0265G Community No. 120261, effective SEPTEMBER 28, 2012, this property appears to be located in Zone "X" (unshaded), an area determined to be outside the 0.2% annual chance floodplain.

PROPOSED FINISH FLOOR ELEVATION = 75.66' N.G.V.D. 29  
 PROPOSED DRAINAGE = A

- SETBACKS**
- FRONT ENTRY GARAGE 20'
  - SIDE ENTRY GARAGE 12'
  - A/C PORTION 12'
  - FRONT PORCH 12'
  - REAR SOFT COVERED PATIO 5'
  - REAR 10'
  - SIDES 5'
  - CORNER SIDE 12'



N.G.V.D. 29  
**ELEVATIONS:**  
 Ⓞ ROAD EL. = 73.51'  
 F.F. EL. = 76.03'

**CERTIFY TO:**  
 LINDA ANN TREBIATOWSKI  
 TAYLOR MORRISON HOME FUNDING, INC.  
 FIRST AMERICAN TITLE INSURANCE COMPANY  
 INSPIRED TITLE SERVICES, LLC

- - FND I.R. & CAP LB#7808 (UNLESS NOTED OTHERWISE)
- Ⓞ - FND NAIL & DISC LS#4044

D & I = DRAINAGE AND IRRIGATION

LOT 179  
 3,804 SQ. FEET  
 0.09 ACRE

<ul style="list-style-type: none"> <li>ASSOCIATION OF FONDINA VILLAGE</li> <li>BACK OF CURB</li> <li>CABLE TELEVISION BOX</li> <li>CONC BLOCK STRUCTURE</li> <li>CHORD BEARING</li> <li>CHIEF CHIEF</li> <li>CHORD</li> <li>CHARLINK FENCE</li> <li>CONCRETE MONUMENT</li> <li>CONCRETE PIPE</li> <li>CORNER</li> <li>CONCRETE</li> <li>DRAINAGE</li> <li>EDGE OF PAVEMENT</li> <li>ELEVATION</li> <li>EASEMENT</li> <li>FIELD BOOK</li> <li>FORM BOARD</li> </ul>	<ul style="list-style-type: none"> <li>FE - FINISH ELEVATION</li> <li>F.F. - FINISH FLOOR</li> <li>FND - FOUND</li> <li>HWA - HANSING, WALTER &amp; ASSOCIATES</li> <li>ID. - IDENTIFICATION</li> <li>IP. - IRON PIPE</li> <li>IM. - 3/4" IRON ROD</li> <li>LC. - LENGTH OF CURVE</li> <li>LL - LOOSE LEAF</li> <li>LU. - LICENSED SURVEYING BUSINESS</li> <li>N&amp;D - NAIL AND DISC</li> <li>N.R. - NON-RECORD</li> <li>N.T.S. - NOT TO SCALE</li> <li>OFFSET</li> <li>OFFICIAL RECORD</li> <li>PL. - PLAT BOOK</li> <li>P.O. - POINT OF CURVATURE</li> </ul>	<ul style="list-style-type: none"> <li>P.C.C. - POINT OF COMPOUND CURVE</li> <li>P.C.P. - PERMANENT CONTROL POINT</li> <li>PI. - POINT OF INTERSECTION</li> <li>PLS. - PROFESSIONAL LAND SURVEYOR</li> <li>P.O.B. - POINT OF BEGINNING</li> <li>P.O.C. - POINT OF COMMENCEMENT</li> <li>P.R.C. - POINT OF REVERSE CURVE</li> <li>PH. - POWER HOLE</li> <li>PRM. - PERMANENT REFERENCE MONUMENT</li> <li>P.T. - POINT OF TANGENCY</li> <li>PG. - FACE</li> <li>R. - RADIUS</li> <li>R.P. - RADIUS POINT</li> <li>RES. - RESIDENCE</li> <li>RNG. - RANGE</li> <li>RLS. - REGISTERED LAND SURVEYOR</li> <li>R/W. - RIGHT OF WAY</li> </ul>	<ul style="list-style-type: none"> <li>SB. - SIDEWALK</li> <li>SEC. - SECTION</li> <li>SQ.FT. - SQUARE FEET</li> <li>T. - TANGENT LENGTH OF CURVE</li> <li>T.O.B. - TOP OF BANK</li> <li>TWP. - TOWNSHIP</li> <li>UD. - UNDERGROUND</li> <li>UL. - UNDERLINE</li> <li>Δ - DELTA (CENTRAL ANGLE)</li> <li>(C) - CALCULATED DATA</li> <li>(D) - DEED DATA</li> <li>(L) - LEGAL DESCRIPTION DATA</li> <li>(M) - MEASURED DATA</li> <li>(P) - PLAT DATA</li> <li>(E) - EXISTING</li> </ul>	<ul style="list-style-type: none"> <li>AIR - AIR RELEASE VALVE</li> <li>BOV - BLOW OFF VALVE</li> <li>BOLLARD</li> <li>CABLE BOX</li> <li>CATV</li> <li>EX. CURB INLET</li> <li>DRAINAGE HANDBOLE</li> <li>ELECTRIC BOX</li> <li>FIRE HYDRANT</li> <li>MAIL BOX</li> <li>PHONE BOX</li> <li>UTILITY/POWER POLE</li> <li>RECLAIMED WATER VALVE</li> <li>CLEANOUT</li> <li>SANITARY HANDBOLE</li> <li>SANITARY VALVE</li> <li>SIGN POST</li> <li>TRANSFORMER PAD</li> </ul>
--	--	---	--	---

ASSUMED NORTH MERIDIAN : BEARINGS BASED ON THE COMMON LINE OF LOTS 179 & 178 , AS BEING N83°33'49"W

Underground Installations or Improvements Have Been Located Except as Noted. The Surveyor Has Not Abstracted The Lands Shown Hereon For Easements, Rights Of Way And Restrictions, If Any. The Surveyor Is Not Responsible For The Accuracy Of The Vertical Datum Of 1929, unless otherwise noted. Do Not Use This Survey For Any Purpose Other Than That Intended.