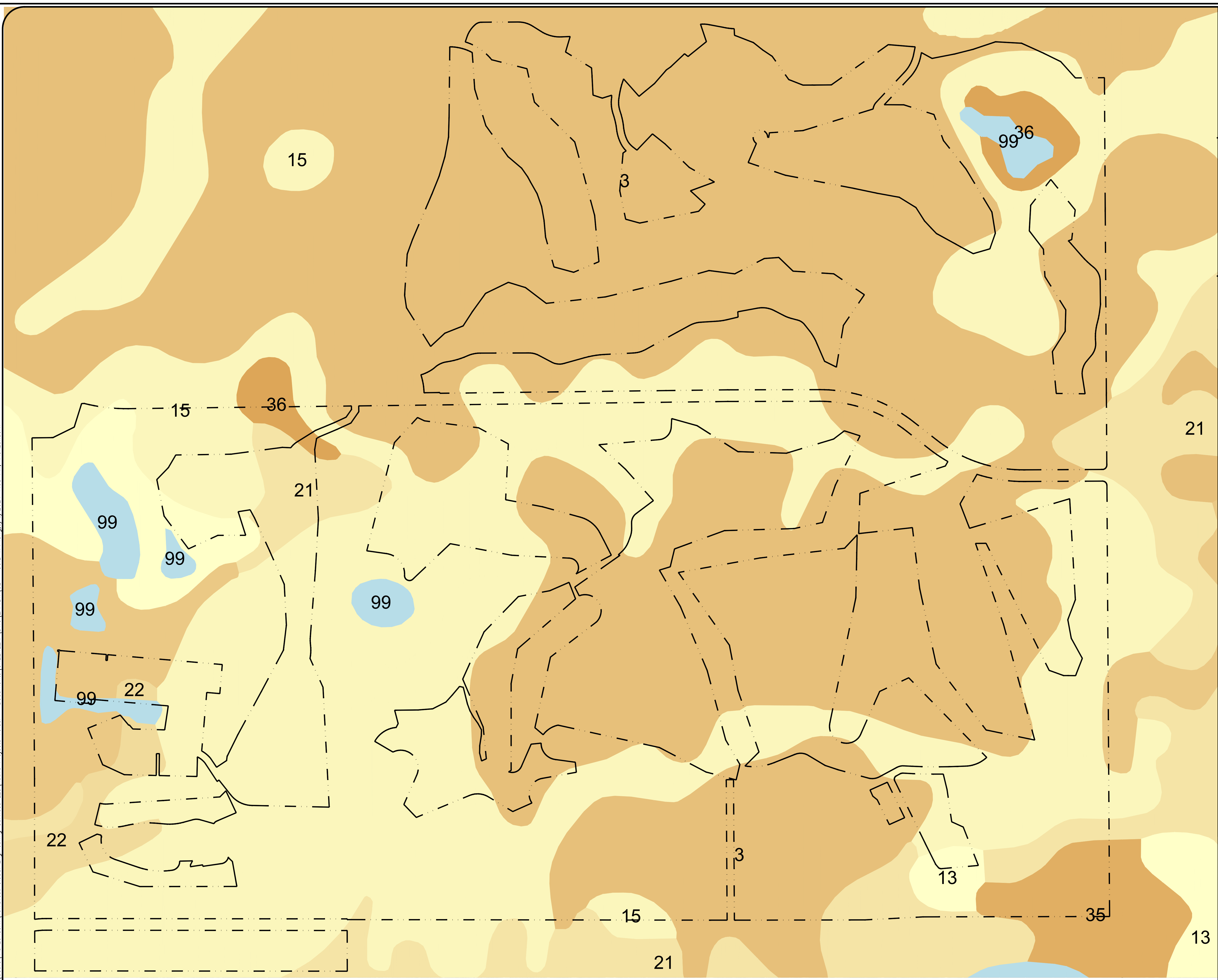
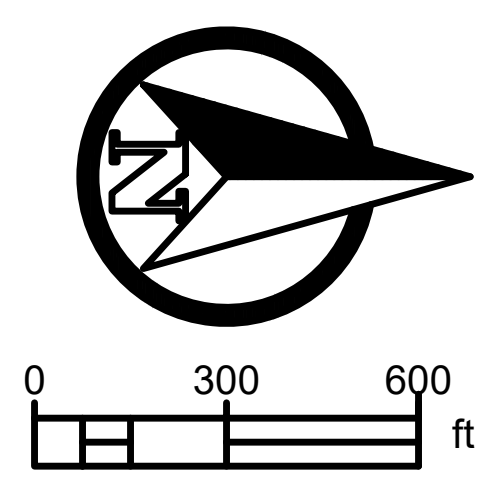


C:\Users\Kunzendorf\TerraWest_Globat_Engineering_Services_LLC\Active_Projects_Folder - Documents\GREENLEAF_DM\EXHIBIT\GL - SOIL_MAP.dwg, 3/6/2024 7:08 PM, Kunzendorf



APPROVAL STAMP

DESIGNED BY	LUCAS TALHARO
DRAWN BY	LUCAS TALHARO
CHECKED BY	DANIEL KOVACS
SITE PLAN COORDINATE	
BY	XX
NO	
DATE	

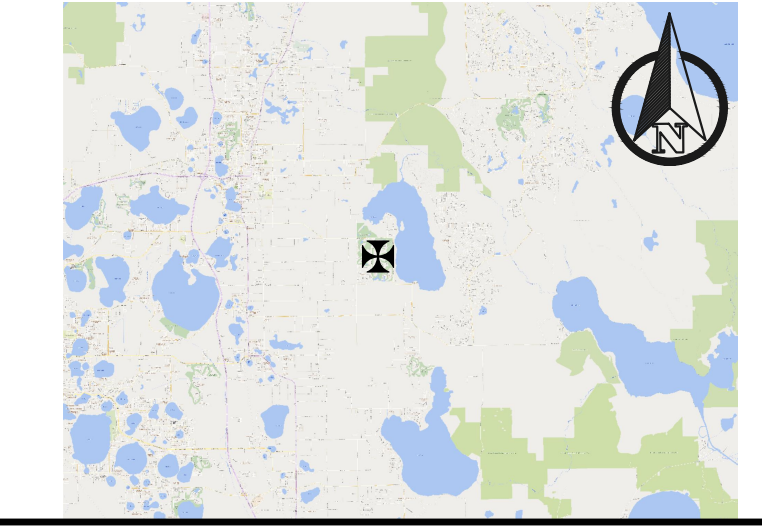


LEGEND

--- PROPERTY BOUNDARY

Map Unit Symbol	Map Unit Name	Acres in AOI	Percent of AOI
3	Candler sand, 0 to 5 percent slopes	1,243.20	40.80%
4	Candler sand, 5 to 8 percent slopes	8.3	0.30%
13	Samsula muck, frequently ponded, 0 to 1 percent slopes	140.4	4.60%
15	Tavares fine sand, 0 to 5 percent slopes	647.6	21.20%
17	Smyrna and Myakka fine sands	2.8	0.10%
21	Immokalee sand	343.8	11.30%
22	Pomello fine sand	16.4	0.50%
23	Ona-Ona, wet, fine sand, 0 to 2 percent slopes	14.4	0.50%
25	Placid and Myakka fine sands, depressional	178.3	5.90%
31	Adamsville fine sand, 0 to 2 percent slopes	23.5	0.80%
35	Hontoon muck, frequently ponded, 0 to 1 percent slopes	26	0.90%
36	Basinger mucky fine sand, frequently ponded, 0 to 1 percent slopes	29.7	1.00%
46	Astatula sand, 0 to 5 percent slopes	15.5	0.50%
53	Myakka-Immokolee-Urban land complex	21	0.70%
59	Arents-Urban land complex, 0 to 5 percent slopes	1.2	0.00%
61	Arents, organic substratum-Urban land complex	10.1	0.30%
74	Narcoossee sand	13.3	0.40%
88	Astatula sand, 5 to 12 percent slopes	5.2	0.20%
99	Water	306.9	10.10%
Totals for Area of Interest		3,047.50	100.00%

LOCATION MAP



CALL 48 HOURS BEFORE YOU DIG
811
 IT'S THE LAW!
 DIAL 811
 Know what's below. Call before you dig.
 SUNSHINE STATE ONE CALL OF FLORIDA, INC.

NOT FOR CONSTRUCTION UNTIL ALL AGENCIES HAVE REVIEWED AND APPROVED THIS DOCUMENT. CONSTRUCTION NOT VALID WITHOUT SEAL.

SOIL MAP
 CONSTRUCTION DOCUMENTS
 GREENLEAF
 POLK COUNTY, FLORIDA

SHEET TITLE

TRACT ENGINEERING
 FROM CONCEPTUAL TO COMPLETION
 5137 S LAKELAND DR, SUITE 3
 LAKELAND, FL 33813
 FIRM REGISTRATION NUMBER - 34943

SHEET 1