

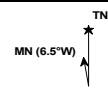
Section 1, Township 32 South, Range 27 East
Sections 25 & 36, Township 31 South, Range 27 East
Sections 30 & 31, Township 31 South, Range 28 East
Section 6, Township 32 South, Range 28 East



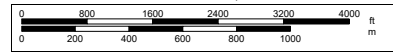
Data use subject to license.

© DeLorme. DeLorme Street Atlas USA® 2010.

www.delorme.com



Scale 1 : 28,125



1" = 2,343.8 ft Data Zoom 12-7

POLK COUNTY ROADS AND DRAINAGE DIVISION / SURVEYING AND MAPPING SECTION

MAINTAINED RIGHT-OF-WAY MAP FOR COUNTY ROAD 630 POLK COUNTY, FLORIDA

CERTIFICATE

I hereby certify that the maintained right-of-way as shown on this map has been:
 _____ Maintained or repaired for four or more years by Polk County maintenance forces,
 _____ road having been constructed by Polk County; or
 _____ Maintained or repaired for seven or more years by Polk County maintenance forces.

Area Maintenance Manager _____
 (Print)

Area Maintenance Manager _____
 (Signature)

It is certified that the lands depicted upon this map lying between the lines marked "maintained right-of-way" are vested in Polk County, Florida, pursuant to the provisions of Section 95.361, Florida Statutes, by virtue of said road having been constructed and/or maintained by Polk County as required by Section 95.361.

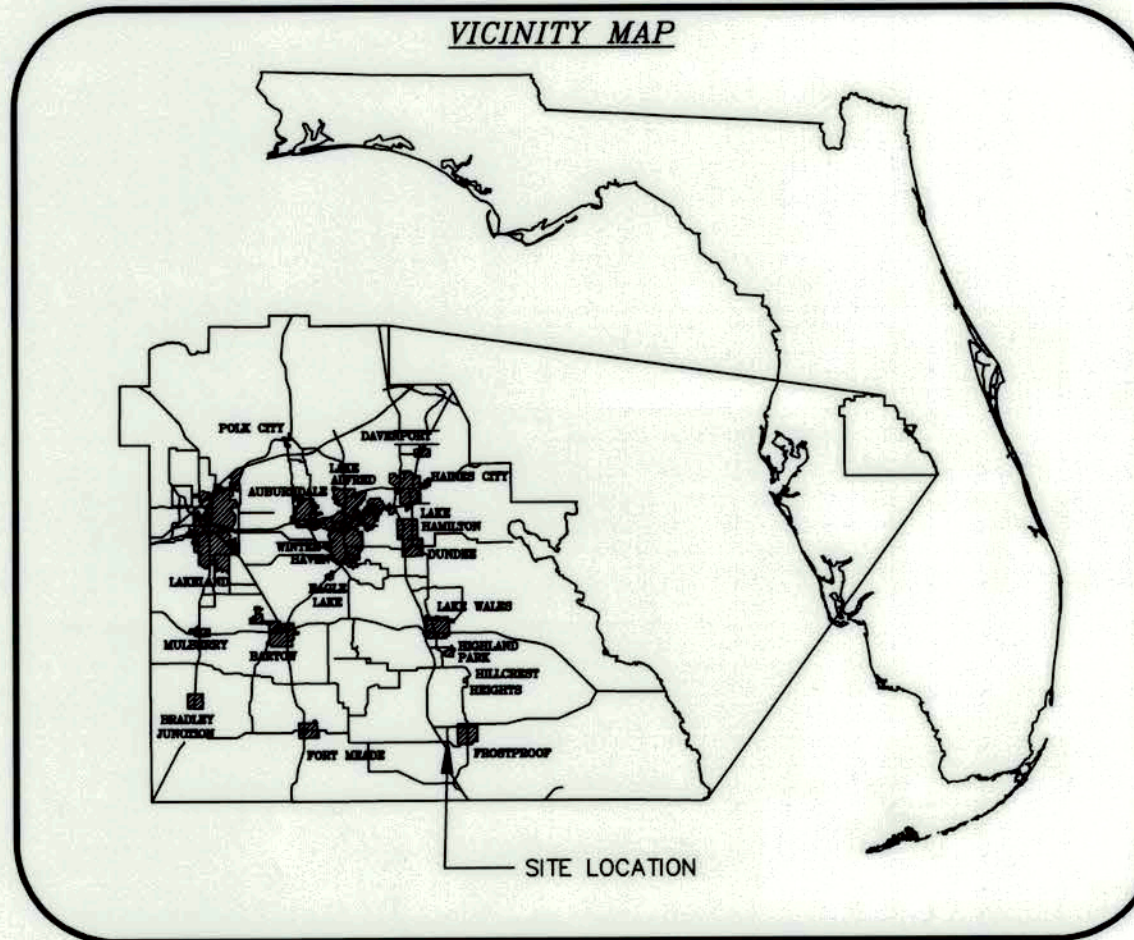
Chairman: _____

Clerk: _____

Approved for Recording: _____ Date _____
 Real Estate Services Administrator

Filed for record in the office of the Clerk of the Circuit Court for the County of Polk, State of Florida, in Map Book _____ Page(s) _____ on the _____ day of _____, 20____.

 Clerk of Circuit Court
 Polk County, Florida



SURVEY NOTES:

1. All surveyed and calculated bearings, distances, stationing and coordinates shown hereon are grid values referenced to the State Plane Coordinate System, Florida West Zone North American Datum of 1983, adjustment of 2011.
2. This maintained right-of-way map is an update of a previously recorded map filed in Map Book 10, Pages 104-105, Public Records of Polk County, Florida. This map supplements the previous map, and shows all relevant information from said map, as well as updated right-of-way information.
3. All parcel lines and section lines shown hereon are for illustrative purposes only.
4. All found monumentation shown hereon are for information purposes only, additional survey work may be required to determine actual section corners, subdivision corners, or parcel corners.
5. The maintained right-of-way lines shown on this map were field located according to mow lines, constructed roads, edge of dirt roads being graded, or areas being maintained with existing boundaries as being fences, power pole lines, or any obstacle establishing a maintenance boundary. These boundaries are all determined by the unit maintenance supervisor.
6. The original of this map was plotted on mylar and contains original signatures. Attention is directed to the fact that this map may have been altered in size by reproduction if acquired from any other source. This must be considered when obtaining scaled data.

LEGEND:

- | | |
|---|---|
| (C) = CALCULATED | TRAV. = TRAVERSE |
| (F) = FIELD | F.D.O.T. = FLORIDA DEPARTMENT OF TRANSPORTATION |
| DEFL. = DEFLECTION | P.C. = POINT OF CURVATURE |
| FRRS = FOUND RAILROAD SPIKE | D.B. = DEED BOOK |
| L = LEFT | S.R.D. = STATE ROAD DEPARTMENT |
| MB = MAP BOOK | P.O.L. = POINT ON LINE |
| M/R/W = MAINTAINED RIGHT-OF-WAY | |
| NGS = NATIONAL GEODETIC SURVEY | |
| P.B. = PLAT BOOK | |
| PG. = PAGE | |
| P.I. = POINT OF INTERSECTION | |
| P.S.M. = PROFESSIONAL SURVEYOR AND MAPPER | |
| R = RIGHT | |
| R/W = RIGHT-OF-WAY | |
| SIRC = SET IRON ROD AND CAP | |
| STA = STATION | |
-
- | | |
|-------|----------------------|
| | ASPHALT |
| ● | = BRIDGE SPIKE |
| △ | = RAILROAD SPIKE |
| ● | = IRON ROD AND CAP |
| ----- | M/R/W |
| ----- | EXISTING R/W & M/R/W |

This maintained right-of-way map was prepared and reviewed under my supervision.

1-31-24
 Date

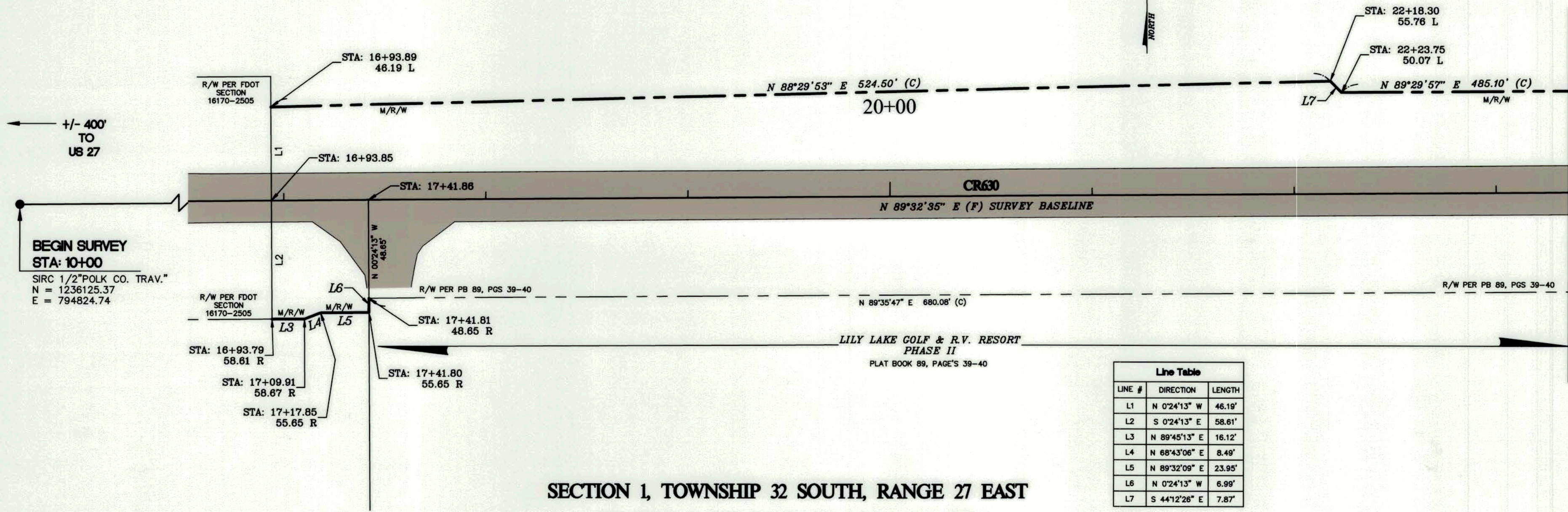
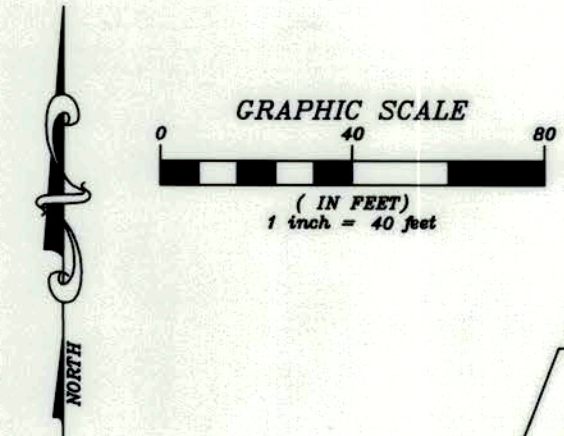
John Richard Noland, Jr.
 JOHN RICHARD NOLAND, JR. P.S.M.
 Florida Registration #5923
 Surveying & Mapping Manager
 Polk County Surveying and Mapping Section



INDEX	
SHEET NO.	SHEET DESCRIPTION
1	COVER SHEET
2-16	M/R/W DETAIL

POLK COUNTY SURVEYING AND MAPPING 3000 SHEFFIELD ROAD, WINTER HAVEN, FL. 33880 PH. 863-535-2200			
Polk County Maintained Right-of-Way Map of:	COUNTY ROAD 630	Drawn By:	RWY 9/19/23
Township 31&32 S., Range 27&28 E.	Maintenance Unit: 6	Field Book No. 17-02	Checked By: BRM 11/28/23
Sections 1,6,25,30,31&36	County Road Number: 270102	Field Work Date:	07/17/23

SECTION 36, TOWNSHIP 31 SOUTH, RANGE 27 EAST



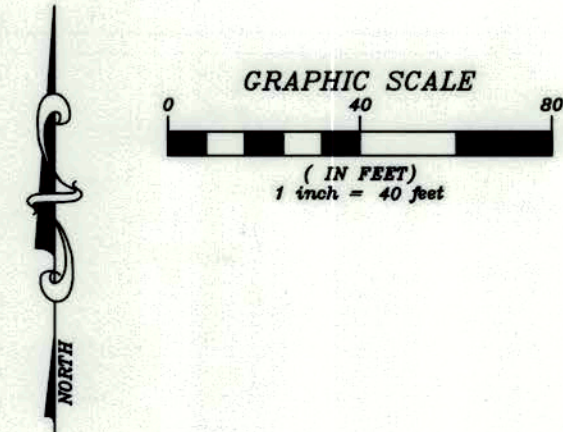
MATCH LINE SEE SHEET 3

SECTION 1, TOWNSHIP 32 SOUTH, RANGE 27 EAST

SEE SHEET #1 FOR SURVEYOR'S NOTES AND LEGEND

Line Table		
LINE #	DIRECTION	LENGTH
L1	N 0°24'13" W	46.19'
L2	S 0°24'13" E	58.61'
L3	N 89°45'13" E	16.12'
L4	N 68°43'06" E	8.49'
L5	N 89°32'09" E	23.95'
L6	N 0°24'13" W	6.99'
L7	S 44°12'26" E	7.87'

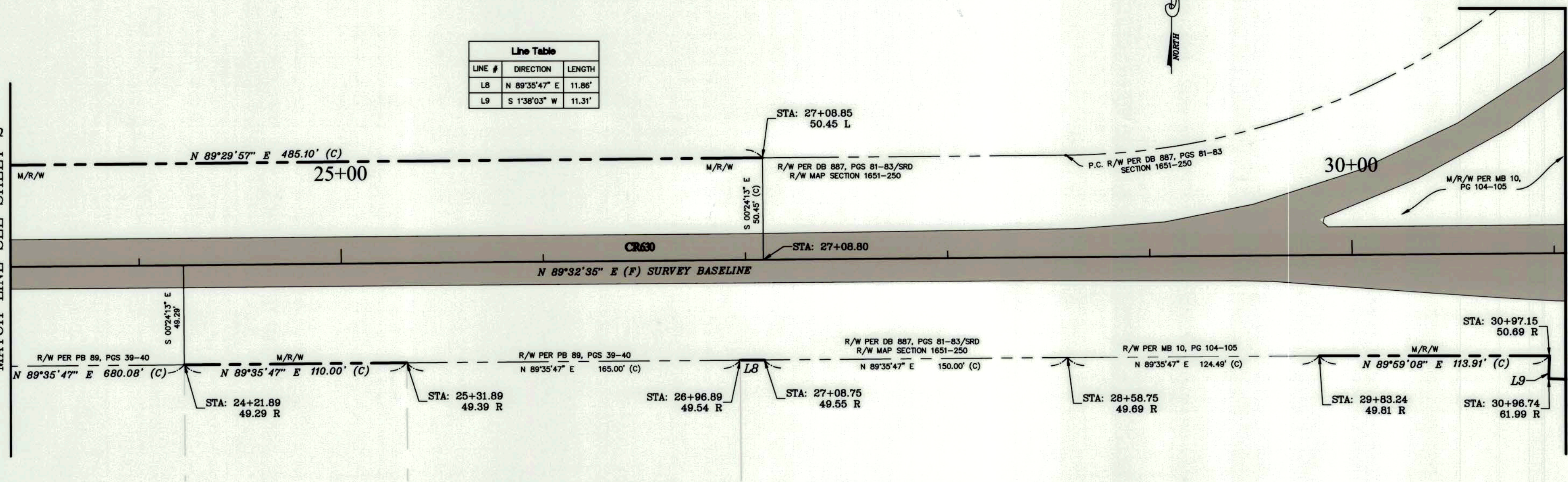
SECTION 36, TOWNSHIP 31 SOUTH, RANGE 27 EAST



Line Table		
LINE #	DIRECTION	LENGTH
L8	N 89°35'47" E	11.86'
L9	S 1°38'03" W	11.31'

MATCH LINE SEE SHEET 2

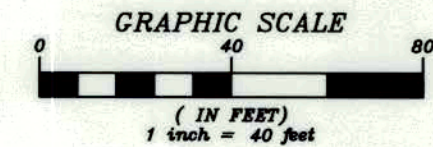
MATCH LINE SEE SHEET 4



SECTION 1, TOWNSHIP 32 SOUTH, RANGE 27 EAST

SEE SHEET #1 FOR SURVEYOR'S NOTES AND LEGEND

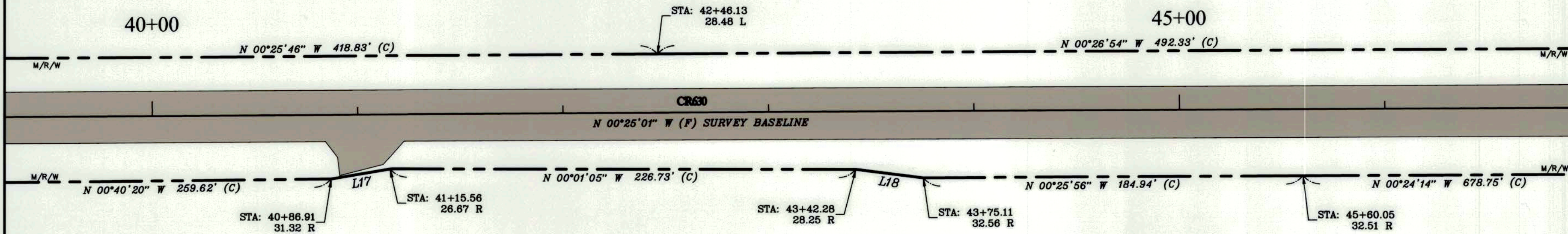
SECTION 36, TOWNSHIP 31 SOUTH, RANGE 27 EAST



Line Table		
LINE #	DIRECTION	LENGTH
L17	N 9°37'46" W	29.02'
L18	N 7°03'36" E	33.11'

MATCH LINE SEE SHEET 4

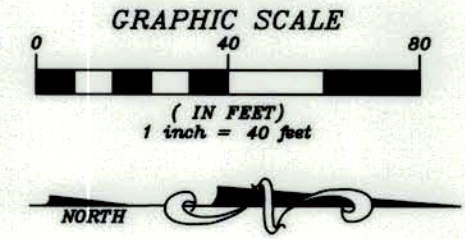
MATCH LINE SEE SHEET 6



SECTION 31, TOWNSHIP 31 SOUTH, RANGE 28 EAST

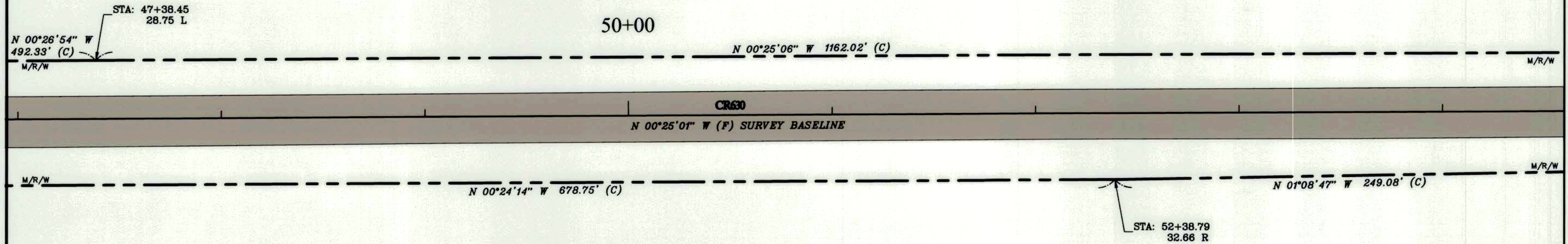
SEE SHEET #1 FOR SURVEYOR'S NOTES AND LEGEND

SECTION 36, TOWNSHIP 31 SOUTH, RANGE 27 EAST



MATCH LINE SEE SHEET 5

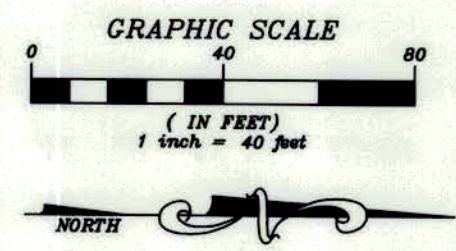
MATCH LINE SEE SHEET 7



SECTION 31, TOWNSHIP 31 SOUTH, RANGE 28 EAST

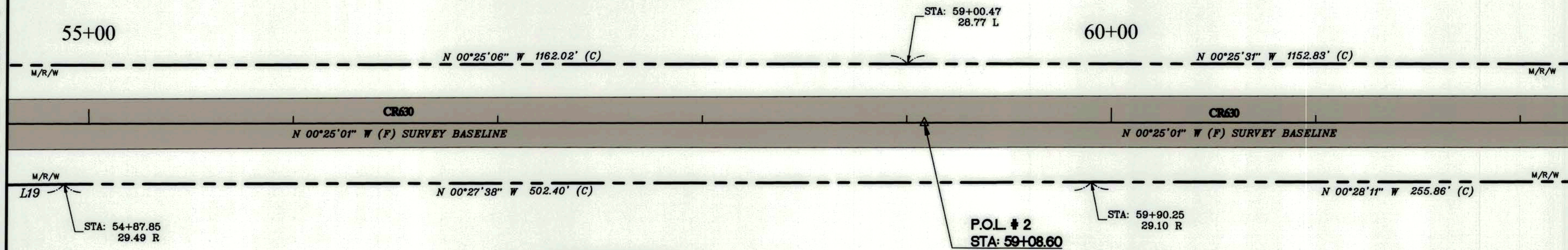
SEE SHEET #1 FOR SURVEYOR'S NOTES AND LEGEND

SECTION 36, TOWNSHIP 31 SOUTH, RANGE 27 EAST



MATCH LINE SEE SHEET 6

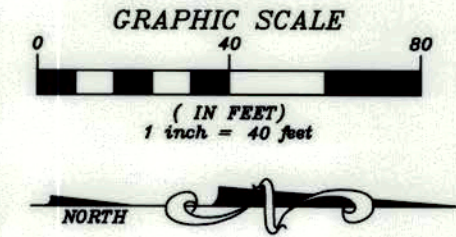
MATCH LINE SEE SHEET 8



Line Table		
LINE #	DIRECTION	LENGTH
L19	N 1°08'47" W	249.08'

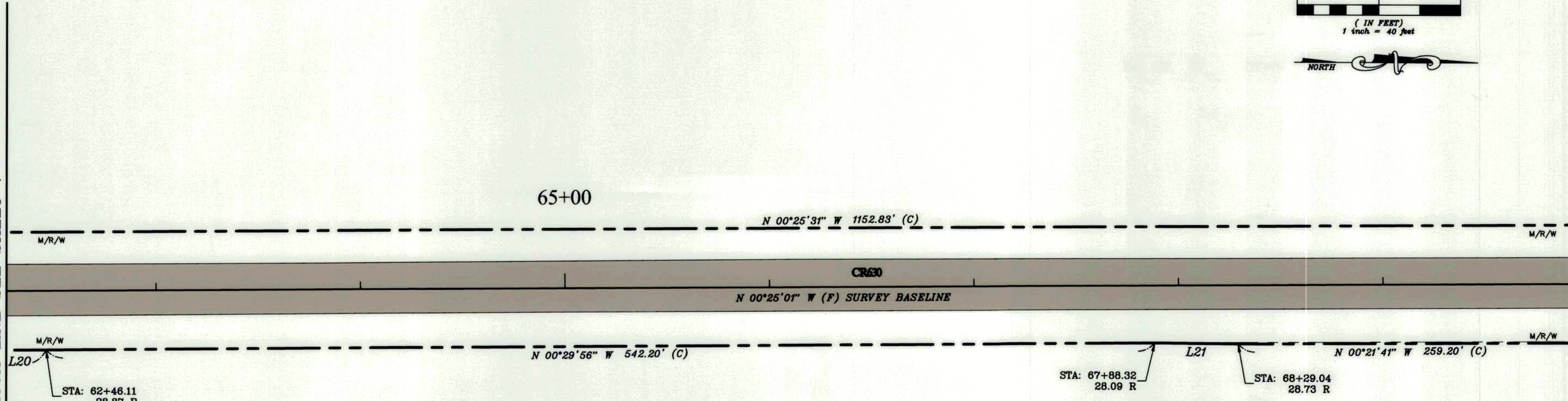
SECTION 31, TOWNSHIP 31 SOUTH, RANGE 28 EAST
SEE SHEET #1 FOR SURVEYOR'S NOTES AND LEGEND

SECTION 36, TOWNSHIP 31 SOUTH, RANGE 27 EAST



MATCH LINE SEE SHEET 7

MATCH LINE SEE SHEET 9

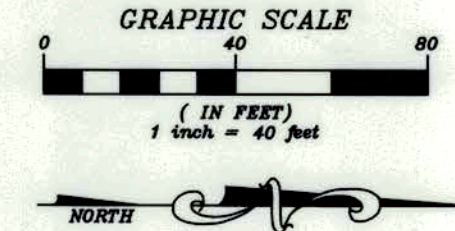


Line Table		
LINE #	DIRECTION	LENGTH
L20	N 0°28'11" W	255.86'
L21	N 0°28'47" E	40.73'

SECTION 31, TOWNSHIP 31 SOUTH, RANGE 28 EAST

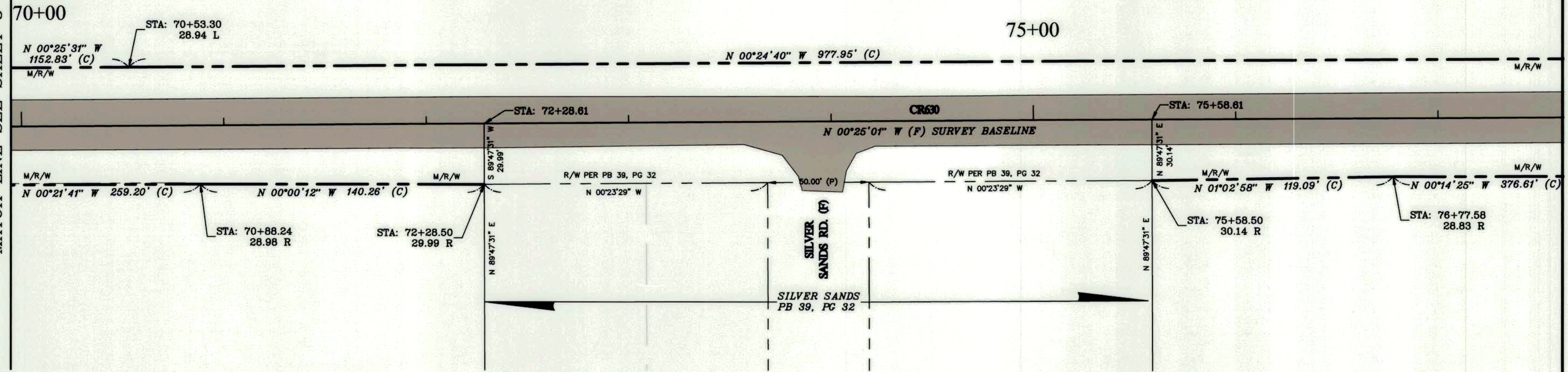
SEE SHEET #1 FOR SURVEYOR'S NOTES AND LEGEND

SECTION 36, TOWNSHIP 31 SOUTH, RANGE 27 EAST



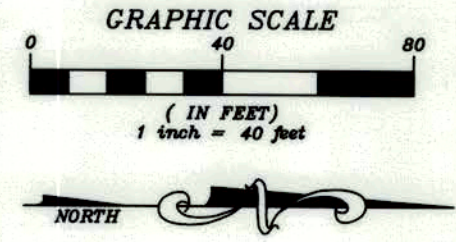
MATCH LINE SEE SHEET 8

MATCH LINE SEE SHEET 10



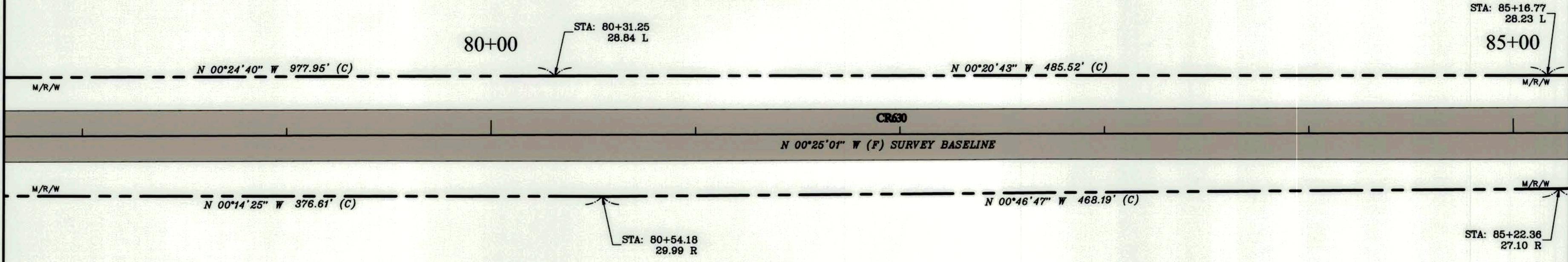
SECTION 31, TOWNSHIP 31 SOUTH, RANGE 28 EAST
SEE SHEET #1 FOR SURVEYOR'S NOTES AND LEGEND

SECTION 25, TOWNSHIP 31 SOUTH, RANGE 27 EAST



MATCH LINE SEE SHEET 9

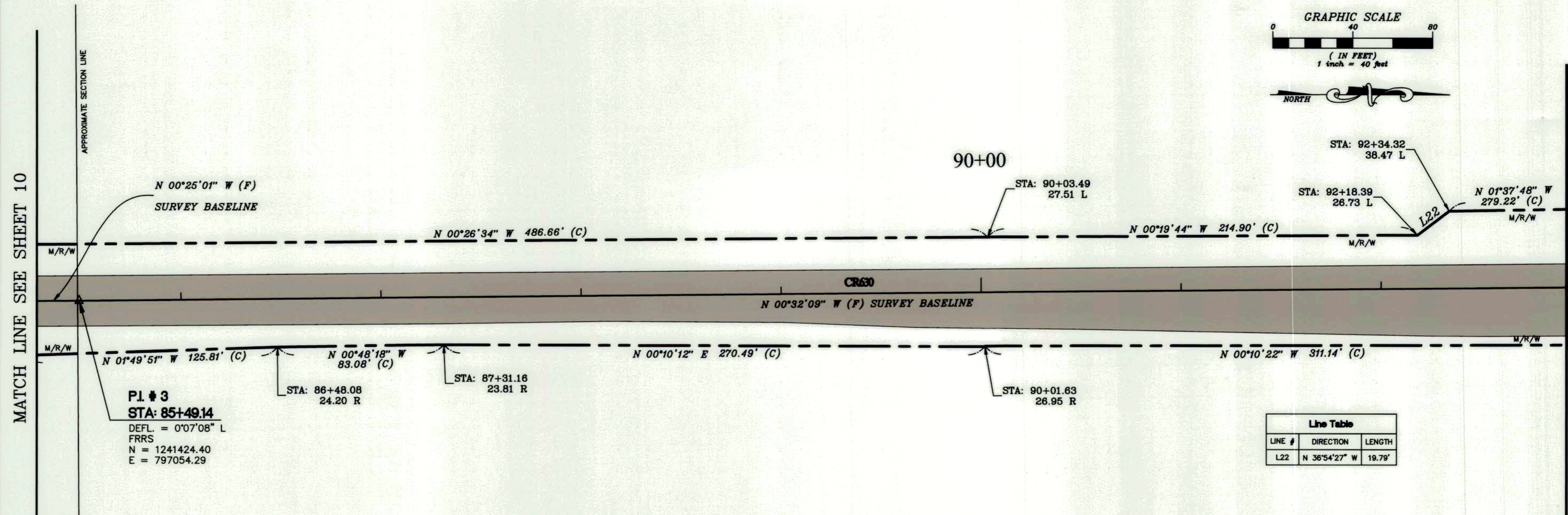
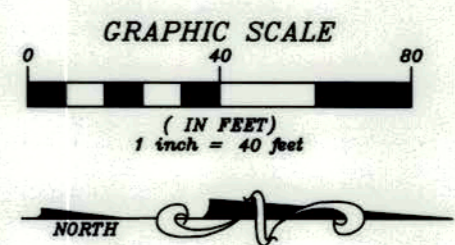
MATCH LINE SEE SHEET 11



SECTION 30, TOWNSHIP 31 SOUTH, RANGE 28 EAST

SEE SHEET #1 FOR SURVEYOR'S NOTES AND LEGEND

SECTION 25, TOWNSHIP 31 SOUTH, RANGE 27 EAST



MATCH LINE SEE SHEET 10

MATCH LINE SEE SHEET 12

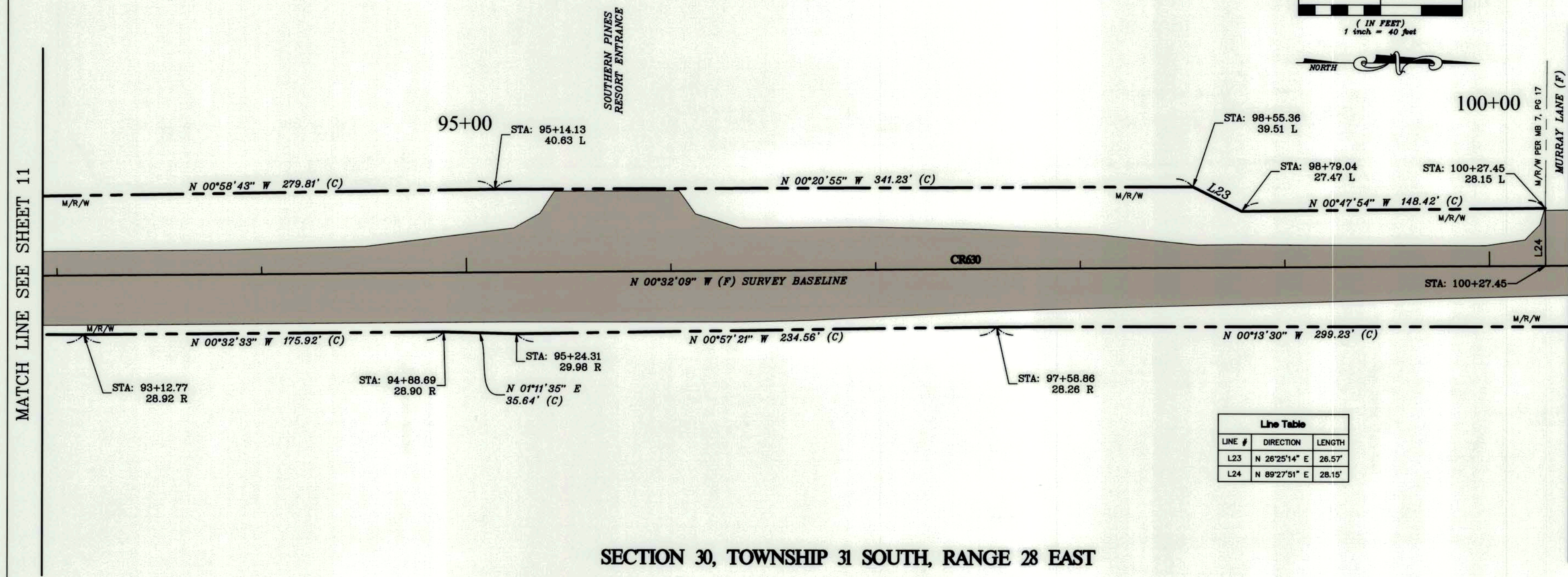
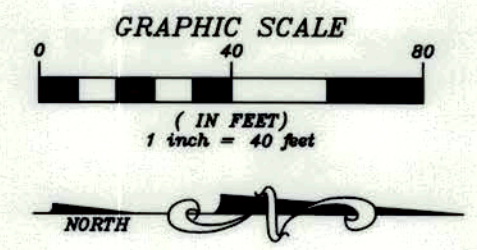
P.I. # 3
STA: 85+49.14
 DEFL. = 0°07'08" L
 FRRS
 N = 1241424.40
 E = 797054.29

Line Table		
LINE #	DIRECTION	LENGTH
L22	N 36°54'27" W	19.79'

SECTION 30, TOWNSHIP 31 SOUTH, RANGE 28 EAST

SEE SHEET #1 FOR SURVEYOR'S NOTES AND LEGEND

SECTION 25, TOWNSHIP 31 SOUTH, RANGE 27 EAST

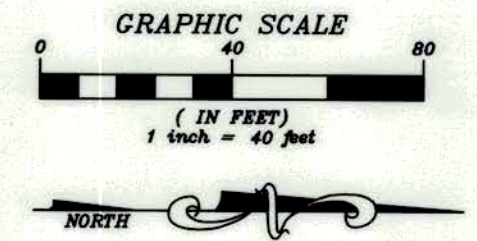


SECTION 30, TOWNSHIP 31 SOUTH, RANGE 28 EAST

SEE SHEET #1 FOR SURVEYOR'S NOTES AND LEGEND

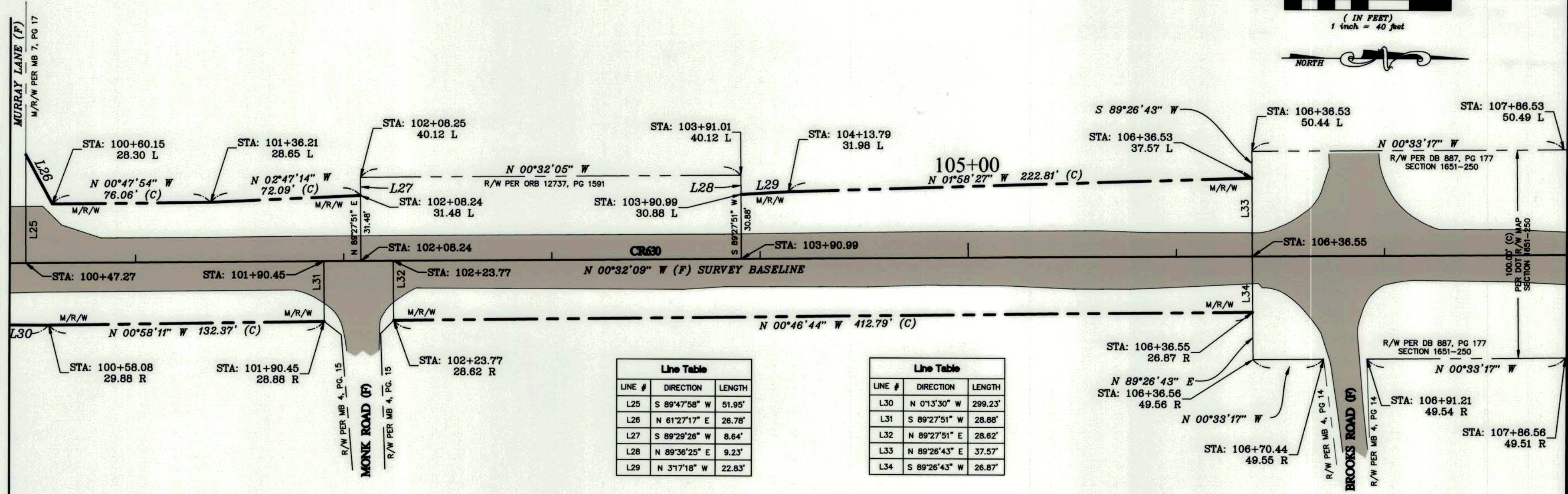
Line Table		
LINE #	DIRECTION	LENGTH
L23	N 26°25'14" E	26.57'
L24	N 89°27'51" E	28.15'

SECTION 25, TOWNSHIP 31 SOUTH, RANGE 27 EAST



MATCH LINE SEE SHEET 12

MATCH LINE SEE SHEET 14

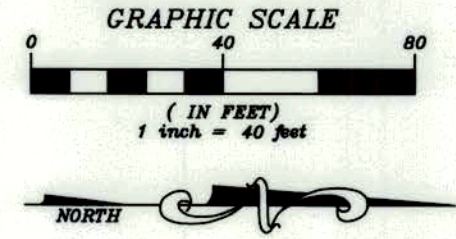


Line Table		
LINE #	DIRECTION	LENGTH
L25	S 89°47'58" W	51.95'
L26	N 61°27'17" E	26.78'
L27	S 89°29'26" W	8.64'
L28	N 89°36'25" E	9.23'
L29	N 3°17'18" W	22.83'

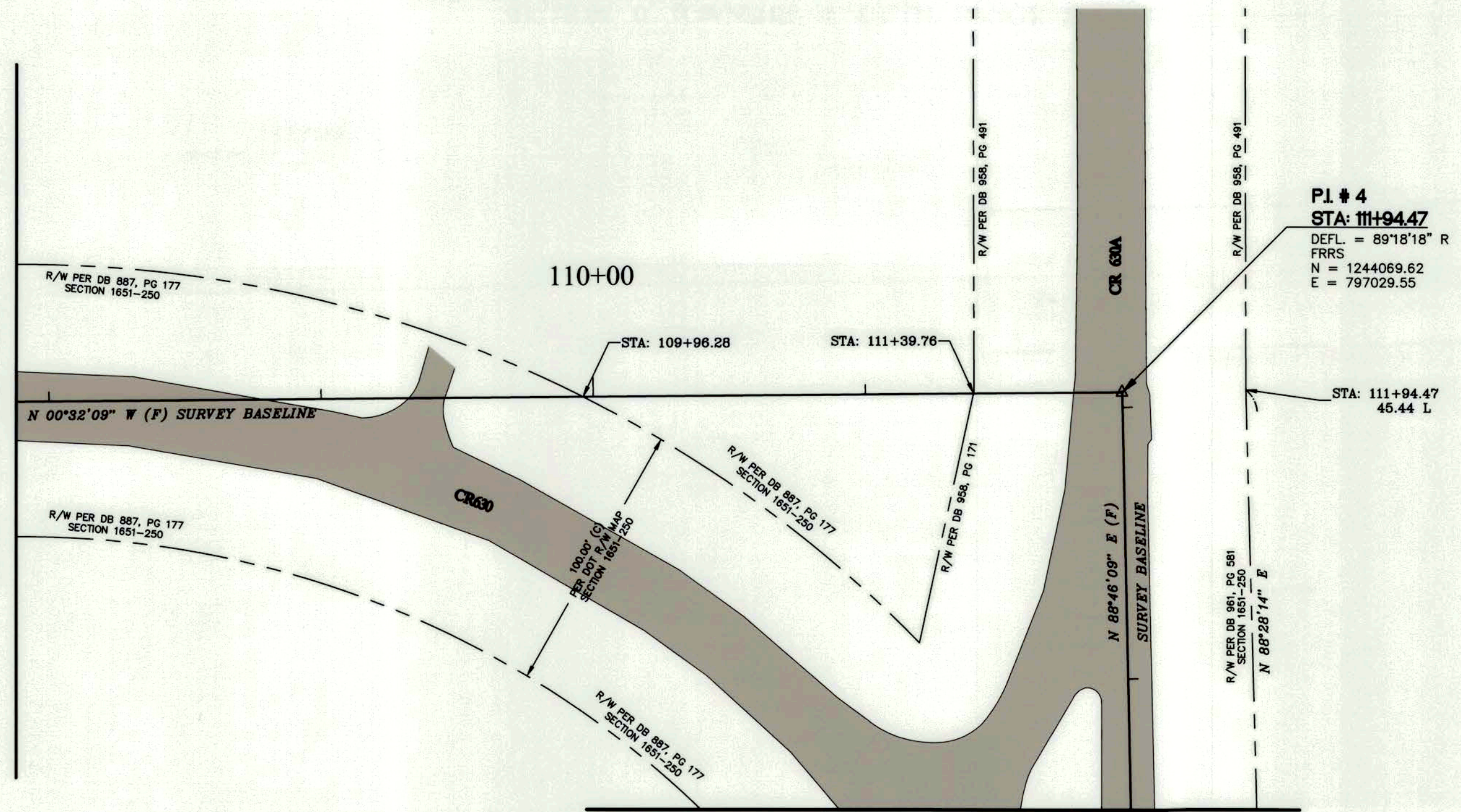
Line Table		
LINE #	DIRECTION	LENGTH
L30	N 0°13'30" W	299.23'
L31	S 89°27'51" W	28.88'
L32	N 89°27'51" E	28.62'
L33	N 89°26'43" E	37.57'
L34	S 89°26'43" W	26.87'

SECTION 30, TOWNSHIP 31 SOUTH, RANGE 28 EAST

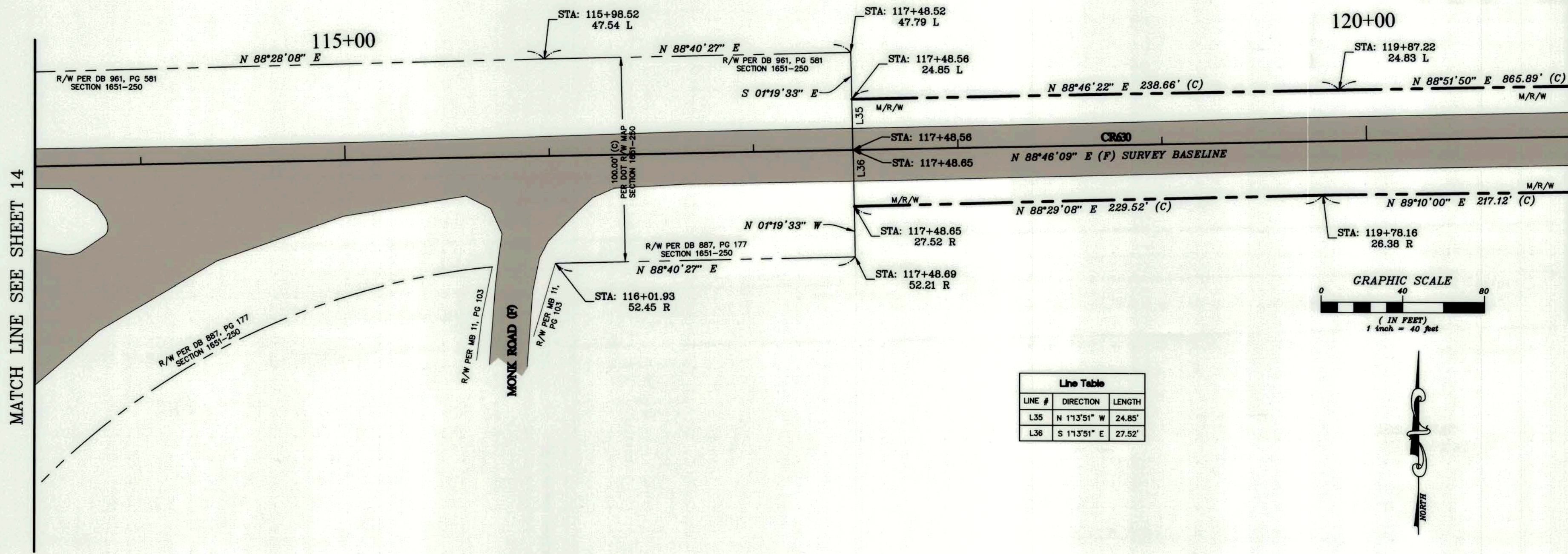
SEE SHEET #1 FOR SURVEYOR'S NOTES AND LEGEND



MATCH LINE SEE SHEET 13

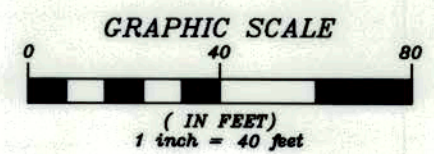


SECTION 30, TOWNSHIP 31 SOUTH, RANGE 28 EAST



MATCH LINE SEE SHEET 14

MATCH LINE SEE SHEET 16

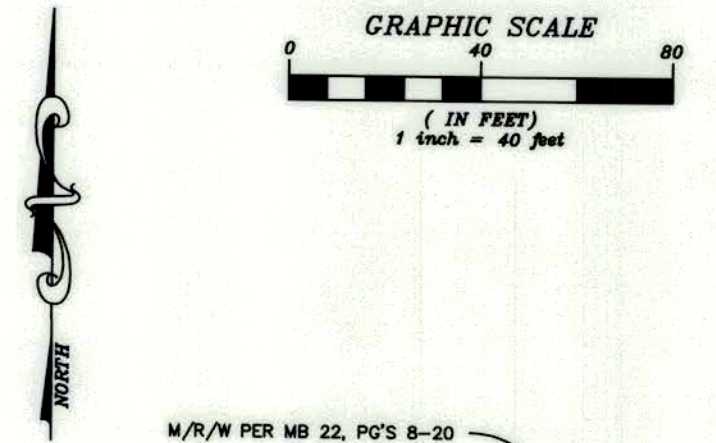


Line Table		
LINE #	DIRECTION	LENGTH
L35	N 1°13'51" W	24.85'
L36	S 1°13'51" E	27.52'

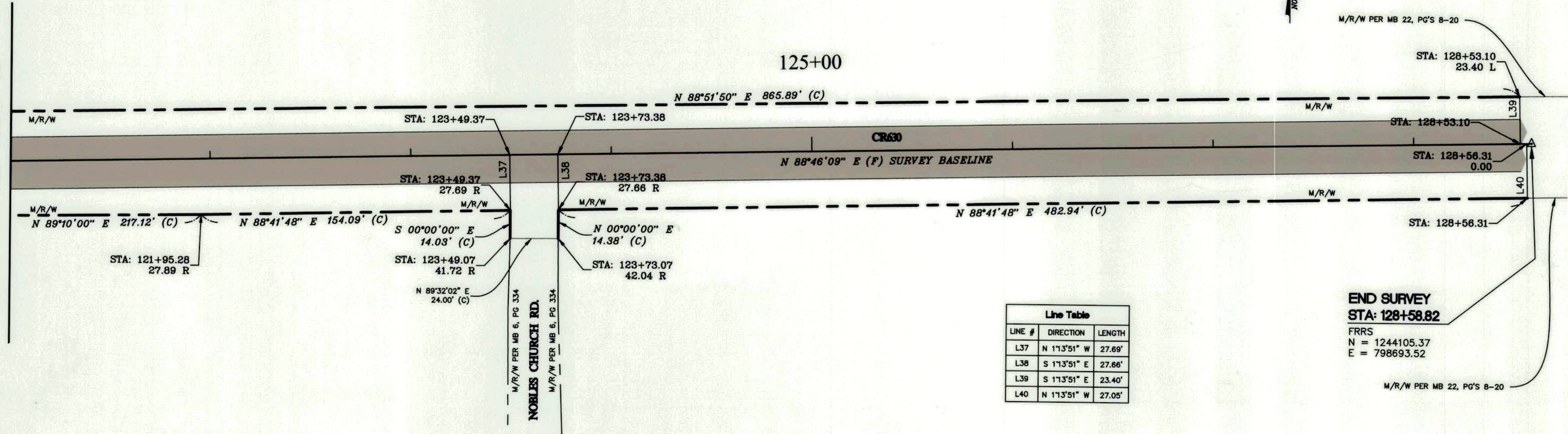


SEE SHEET #1 FOR SURVEYOR'S NOTES AND LEGEND

SECTION 30, TOWNSHIP 31 SOUTH, RANGE 28 EAST



MATCH LINE SEE SHEET 15



Line Table		
LINE #	DIRECTION	LENGTH
L37	N 1°13'51" W	27.69'
L38	S 1°13'51" E	27.66'
L39	S 1°13'51" E	23.40'
L40	N 1°13'51" W	27.05'

END SURVEY
STA: 128+58.82
 FRRS
 N = 1244105.37
 E = 798693.52

SEE SHEET #1 FOR SURVEYOR'S NOTES AND LEGEND