

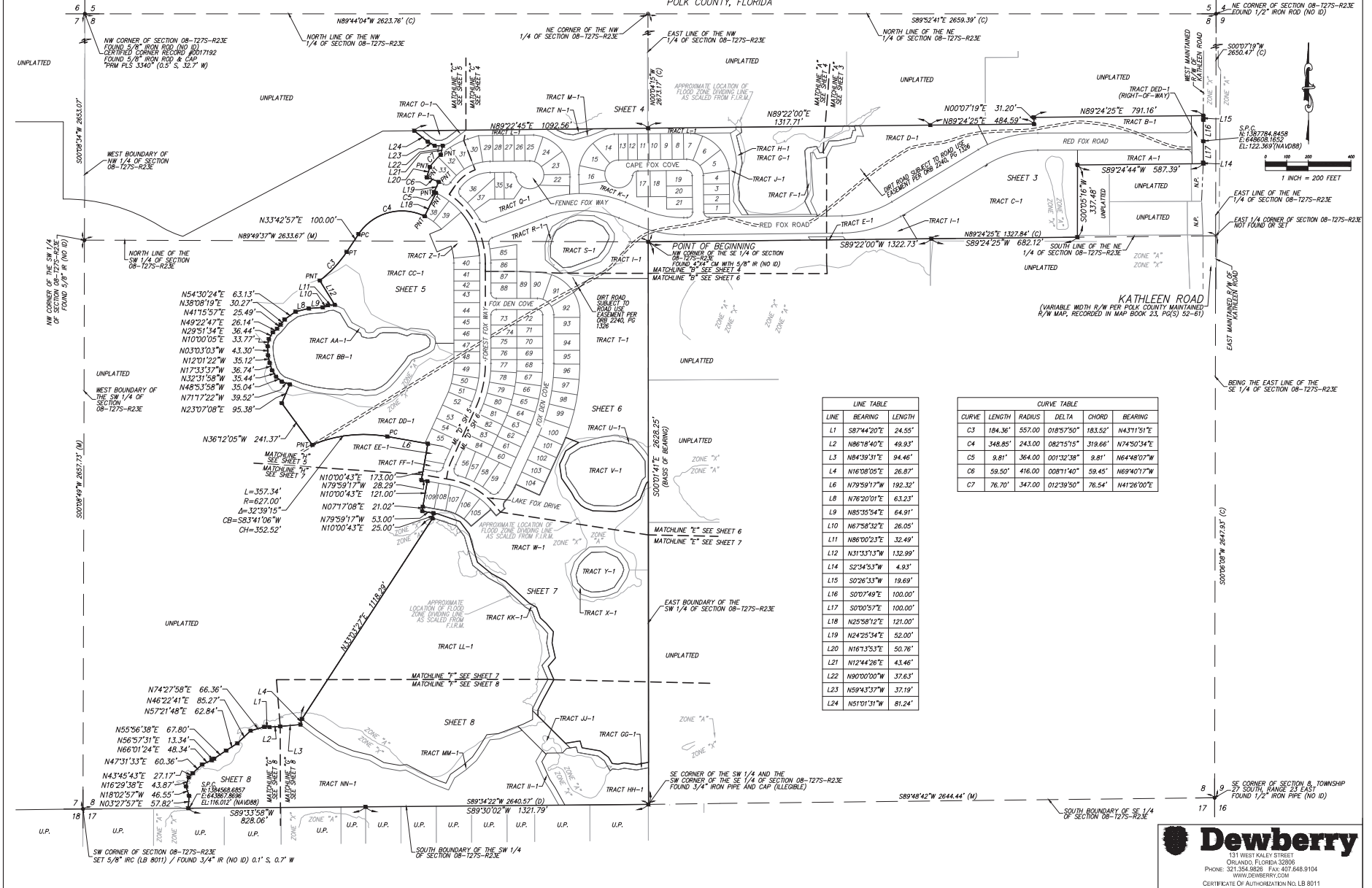
FOX BRANCH RANCH PHASE 1

SITUATED IN SECTION 8, TOWNSHIP 27 SOUTH, RANGE 23 EAST
POLK COUNTY, FLORIDA

SHEET 2 OF 8

PLAT BOOK:

PAGE:



LINE TABLE

LINE	BEARING	LENGTH
L1	S87°44'20"E	24.55'
L2	N86°18'40"E	49.93'
L3	N84°39'31"E	94.46'
L4	N16°08'05"E	26.82'
L6	N79°59'17"W	192.32'
L8	N76°20'01"E	63.23'
L9	N85°35'54"E	64.91'
L10	N67°58'32"E	26.05'
L11	N86°20'32"E	32.49'
L12	N31°33'13"W	132.99'
L14	S2°34'53"W	4.93'
L15	S02°26'33"W	18.69'
L16	S07°49"E	100.00'
L17	S07°05'27"E	100.00'
L18	N25°58'12"E	121.00'
L19	N24°25'34"E	52.00'
L20	N16°13'53"E	50.76'
L21	N12°44'26"E	43.46'
L22	N90°00'00"W	37.63'
L23	N59°43'37"W	37.19'
L24	N51°01'31"W	81.24'

CURVE TABLE

CURVE	LENGTH	RADIUS	DELTA	CHORD	BEARING
C3	184.36'	557.00'	018°57'50"	183.52'	N43°11'51"E
C4	348.85'	243.00'	082°15'15"	319.66'	N74°50'34"E
C5	9.81'	364.00'	001°32'38"	9.81'	N64°48'07"W
C6	59.50'	416.00'	008°11'40"	59.45'	N69°40'17"W
C7	76.70'	347.00'	012°39'50"	76.54'	N41°26'00"E

131 WEST WALY STREET
ORLANDO, FLORIDA 32806
PHONE: 321.354.8626 FAX: 407.848.9104
WWW.DEWBERRY.COM
CERTIFICATE OF AUTHORIZATION NO. LB 8011

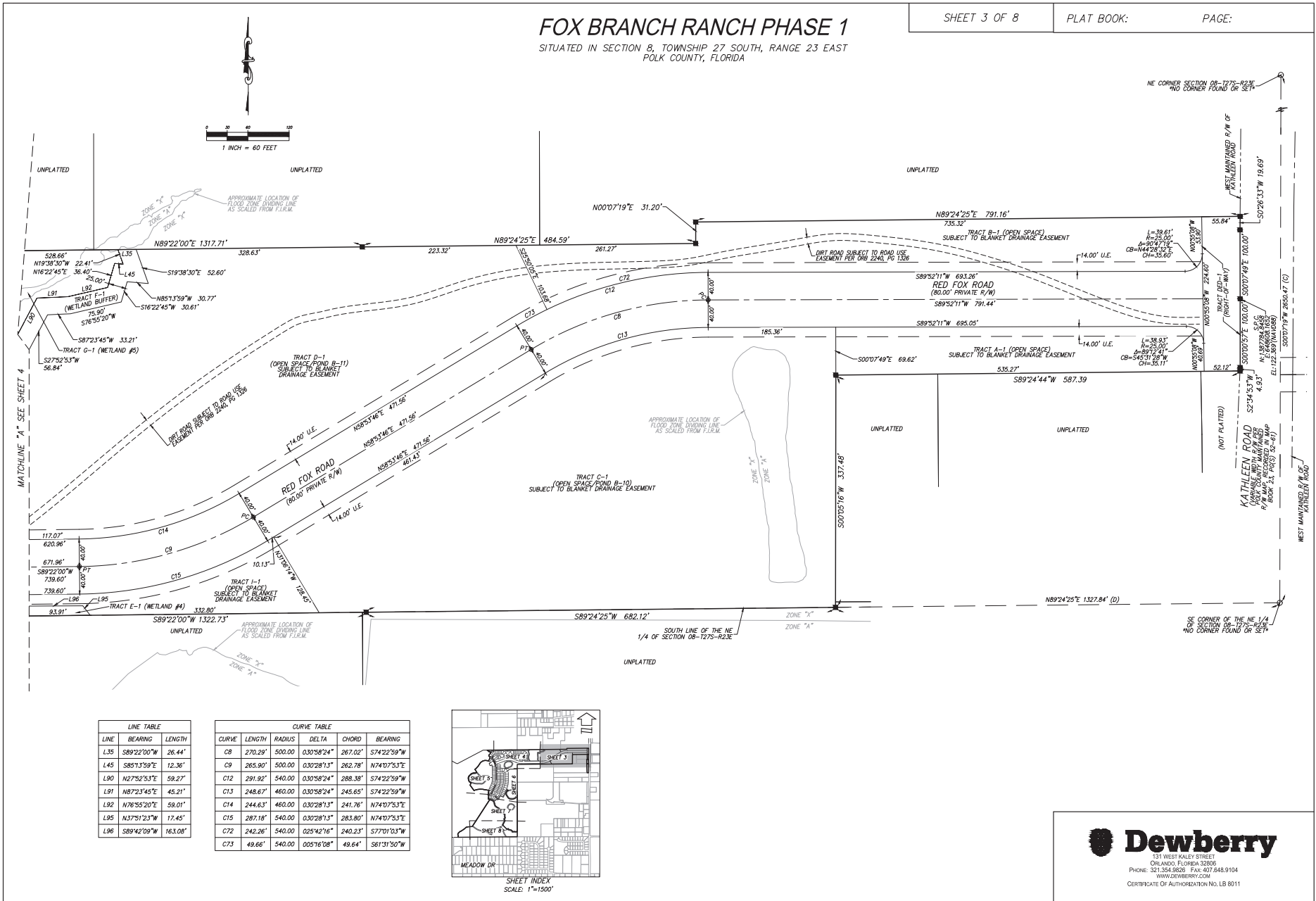
FOX BRANCH RANCH PHASE 1

SITUATED IN SECTION 8, TOWNSHIP 27 SOUTH, RANGE 23 EAST
POLK COUNTY, FLORIDA

SHEET 3 OF 8

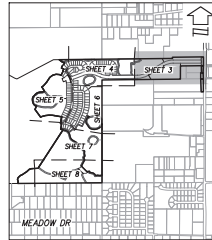
PLAT BOOK:

PAGE:



LINE	BEARING	LENGTH
L35	S89°22'00"W	26.44'
L45	S85°13'59"E	12.36'
L90	N27°52'53"E	59.27'
L91	N87°23'45"E	45.21'
L92	N76°55'20"E	59.01'
L95	N37°51'23"W	17.45'
L96	S89°42'09"W	163.08'

CURVE	LENGTH	RADIUS	DELTA	CHORD	BEARING
C8	270.29'	500.00'	0.30°58'24"	267.02'	S74°22'59"W
C9	265.90'	500.00'	0.30°28'13"	262.78'	N74°07'53"E
C12	291.92'	540.00'	0.30°58'24"	288.58'	S74°22'59"W
C13	248.67'	460.00'	0.30°58'24"	245.65'	S74°22'59"W
C14	244.63'	460.00'	0.30°28'13"	241.76'	N74°07'53"E
C15	287.18'	540.00'	0.30°28'13"	283.80'	N74°07'53"E
C72	242.26'	540.00'	0.25°42'16"	240.23'	S77°01'03"W
C73	49.66'	540.00'	0.05°16'08"	49.64'	S61°31'50"W



SHEET INDEX
SCALE: 1"=1500'

Dewberry

131 WEST KALEY STREET
ORLANDO, FLORIDA 32806
PHONE: 321.354.3800 FAX: 407.648.9104
WWW.DEWBERRY.COM

CERTIFICATE OF AUTHORIZATION NO. LB 8011

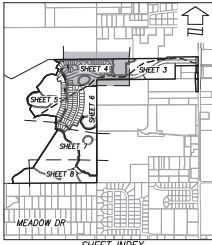
FOX BRANCH RANCH PHASE 1

SITUATED IN SECTION 8, TOWNSHIP 27 SOUTH, RANGE 23 EAST
POLK COUNTY, FLORIDA

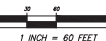
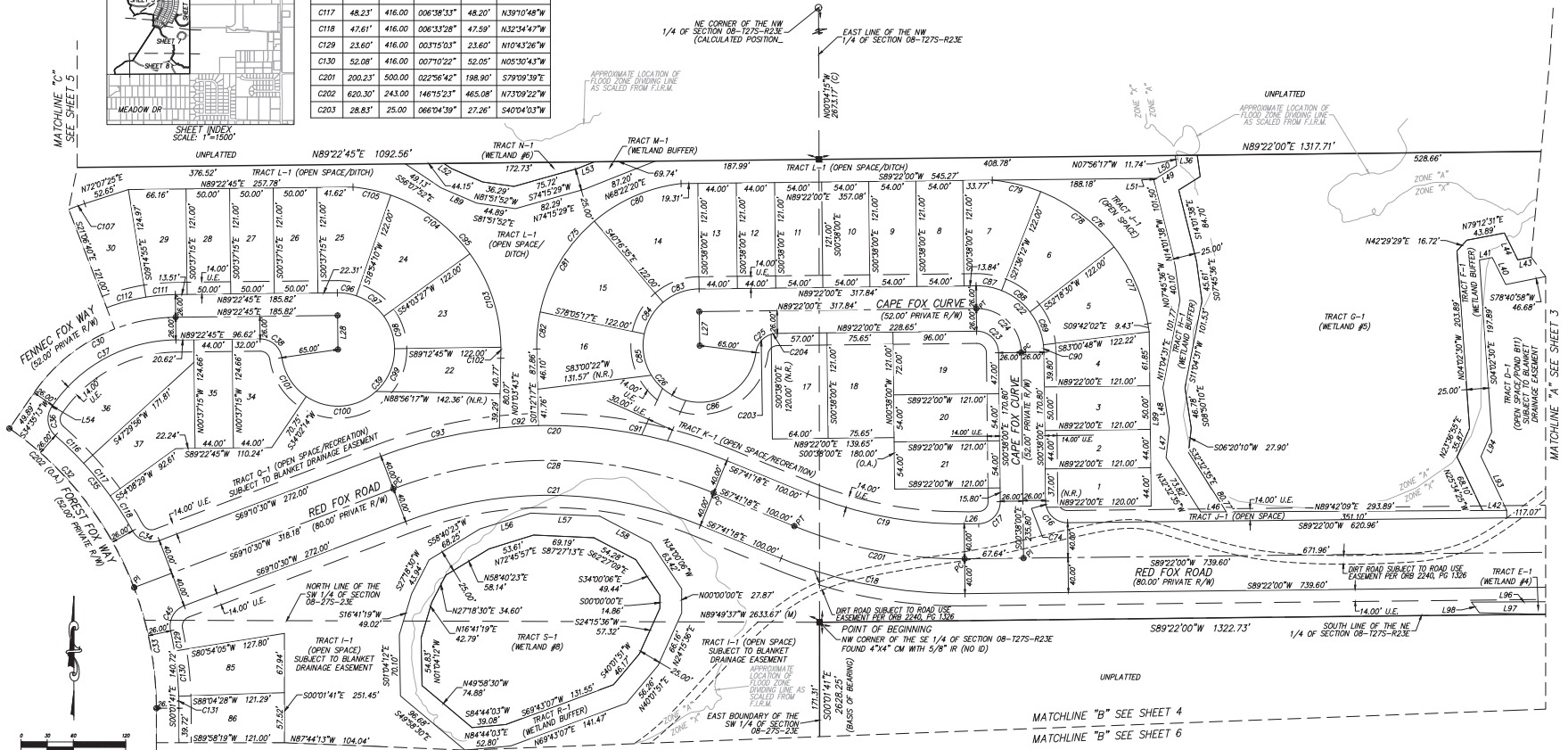
SHEET 4 OF 8

PLAT BOOK:

PAGE:



CURVE TABLE				
CURVE	LENGTH	RADIUS	DELTA	BEARING
C117	48.23'	416.00'	006°35'53"	48.20' N39°10'48"W
C118	47.61'	416.00'	006°33'28"	47.59' N32°34'47"W
C119	23.60'	416.00'	003°15'03"	23.60' N10°43'28"W
C130	52.08'	416.00'	007°10'22"	52.05' N05°30'43"W
C201	200.23'	500.00'	022°56'42"	198.90' S79°09'39"E
C202	620.30'	243.00'	146°15'23"	465.08' N73°09'22"W
C203	28.83'	25.00'	066°04'39"	27.26' S40°04'03"W



LINE TABLE		
LINE	BEARING	LENGTH
L26	S89°22'00"W	16.64'
L27	S03°38'00"E	39.00'
L28	S03°37'15"E	38.00'
L36	S89°22'00"W	25.20'
L40	N26°32'59"W	34.63'
L41	S79°12'31"W	14.97'
L42	S89°42'09"W	27.65'
L43	N78°40'58"E	15.70'
L44	S26°32'59"E	34.45'
L46	S89°42'09"W	29.56'
L47	N6°20'10"E	33.40'
L48	N8°50'10"W	47.84'
L49	N57°58'39"E	31.01'
L50	S57°58'39"W	27.57'

CURVE TABLE					
CURVE	LENGTH	RADIUS	DELTA	CHORD	BEARING
C16	326.37'	25.00'	090°00'00"	35.36'	S45°38'00"W
C17	39.27'	25.00'	090°00'00"	35.36'	N44°22'00"E
C18	216.25'	540.00'	022°56'42"	214.81'	S79°09'39"E
C19	184.22'	460.00'	022°56'42"	182.99'	S79°09'39"E
C20	406.55'	540.00'	043°08'12"	397.02'	N89°15'24"W
C21	346.32'	460.00'	043°08'12"	338.20'	N89°15'24"W
C22	120.95'	77.00'	090°00'00"	108.89'	N45°38'00"W
C23	39.27'	25.00'	090°00'00"	35.36'	N45°38'00"W
C24	80.11'	51.00'	090°00'00"	72.12'	N45°38'00"W
C25	35.93'	25.00'	082°20'16"	32.91'	S48°11'59"W
C26	297.61'	65.00'	262°20'16"	97.86'	S41°48'08"E
C27	INTENTIONALLY LEFT BLANK				
C28	376.44'	500.00'	043°08'12"	367.61'	N89°15'24"W
C30	191.26'	200.00'	054°47'32"	184.06'	S61°58'59"W
C31	INTENTIONALLY LEFT BLANK				

CURVE TABLE					
CURVE	LENGTH	RADIUS	DELTA	CHORD	BEARING
C32	304.60'	390.00'	044°44'56"	296.91'	N43°11'58"W
C33	141.56'	390.00'	020°47'50"	140.79'	N10°25'33"E
C34	35.57'	25.00'	081°31'27"	32.65'	S70°03'47"E
C35	141.33'	416.00'	019°28'17"	140.69'	S39°02'12"E
C36	36.33'	25.00'	012°19'17"	33.25'	S07°05'34"E
C37	166.40'	174.00'	054°47'32"	160.13'	S61°58'59"W
C38	35.93'	25.00'	082°20'16"	32.91'	N49°27'00"W
C39	297.61'	65.00'	262°20'16"	97.86'	N47°14'45"E
C45	35.57'	25.00'	081°31'27"	32.65'	N28°41'46"W
C46	89.46'	416.00'	012°19'17"	89.29'	N06°11'19"W
C74	7.09'	25.00'	016°15'37"	7.07'	S08°45'49"E
C75	276.26'	187.00'	084°38'35"	251.81'	S41°07'01"W
C76	261.14'	199.00'	075°11'11"	242.80'	N47°17'38"W
C77	97.22'	199.00'	027°59'28"	96.25'	N23°41'46"W
C78	106.64'	199.00'	030°42'18"	105.37'	N53°02'39"W

CURVE TABLE					
CURVE	LENGTH	RADIUS	DELTA	CHORD	BEARING
C79	57.27'	199.00'	016°29'25"	57.08'	N76°38'31"W
C80	110.04'	187.00'	033°42'54"	108.46'	S66°34'52"W
C81	123.41'	187.00'	037°48'42"	121.18'	S30°49'04"W
C82	42.81'	187.00'	013°07'00"	42.72'	S05°21'13"W
C83	44.97'	65.00'	039°38'35"	44.08'	S69°32'42"W
C84	42.90'	65.00'	037°48'42"	42.12'	S30°49'04"W
C85	49.29'	65.00'	043°26'58"	48.12'	S09°48'46"E
C86	160.45'	65.00'	141°26'02"	122.71'	N77°44'45"E
C87	29.88'	77.00'	022°14'12"	29.70'	N79°30'54"W
C88	41.26'	77.00'	030°42'18"	40.77'	N53°02'39"W
C89	41.26'	77.00'	030°42'18"	40.77'	N22°20'21"W
C90	8.54'	77.00'	006°21'11"	8.53'	N03°48'36"W
C91	221.64'	540.00'	023°30'59"	220.08'	N79°26'47"W
C92	44.75'	540.00'	004°44'54"	44.74'	S86°25'16"W
C93	140.17'	540.00'	014°52'19"	139.77'	S76°36'39"W

CURVE TABLE					
CURVE	LENGTH	RADIUS	DELTA	CHORD	BEARING
C95	286.47'	187.00'	087°46'23"	259.27'	N40°48'23"W
C96	22.15'	65.00'	019°31'25"	22.04'	N80°51'33"W
C97	39.88'	65.00'	035°09'18"	39.26'	N53°31'12"W
C98	39.88'	65.00'	035°09'18"	39.26'	N82°21'54"W
C99	55.86'	65.00'	083°37'10"	53.52'	N23°31'20"E
C100	86.45'	65.00'	076°12'19"	80.22'	N85°56'04"E
C101	54.09'	65.00'	047°40'47"	52.54'	S32°03'22"E
C102	12.62'	187.00'	003°52'03"	12.62'	N01°08'46"E
C103	114.74'	187.00'	035°09'18"	112.95'	N82°21'54"W
C104	114.74'	187.00'	048°37'40"	112.95'	N53°31'12"W
C105	44.37'	187.00'	013°35'44"	44.27'	N77°33'42"W
C107	19.59'	347.00'	003°14'05"	19.59'	S70°30'23"W
C111	34.03'	226.00'	008°37'40"	34.00'	S85°03'55"W
C112	46.79'	226.00'	011°51'45"	46.71'	S74°49'13"W
C116	45.53'	416.00'	006°16'16"	45.51'	N45°38'12"W

Dewberry
 131 WEST KALEY STREET
 ORLANDO, FLORIDA 32806
 PHONE: 321.354.8008 FAX: 407.648.8104
 WWW.DEWBERRY.COM
 CERTIFICATE OF AUTHORIZATION NO. LB 8011

FOX BRANCH RANCH PHASE 1

SITUATED IN SECTION 8, TOWNSHIP 27 SOUTH, RANGE 23 EAST
POLK COUNTY, FLORIDA

SHEET 5 OF 8

PLAT BOOK:

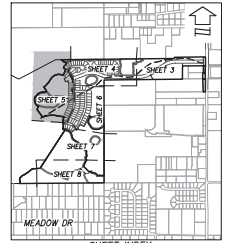
PAGE:

CURVE TABLE				
CURVE	LENGTH	RADIUS	DELTA	BEARING
C70	204.04'	474.00'	024°39'49"	202.47'
C127	22.59'	243.00'	005°19'59"	22.59'
C183	42.67'	353.00'	006°55'34"	42.65'
C184	51.42'	353.00'	008°20'45"	51.37'
C185	19.85'	226.00'	005°01'56"	19.84'
C5	9.81'	364.00'	001°32'58"	9.81'
C6	59.50'	416.00'	008°11'40"	59.45'
C7	76.70'	347.00'	012°39'50"	76.54'

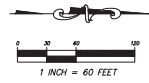
LINE TABLE	
LINE	LENGTH
L55	585.2151'E
L56	38.66'

LINE TABLE			LINE TABLE		
LINE	BEARING	LENGTH	LINE	BEARING	LENGTH
L31	S34°39'13"W	1.85'	L100	N10°00'05"E	26.53'
L34	S79°59'17"E	64.20'	L101	N3°03'03"W	38.48'
L64	S10°00'43"W	41.67'	L102	N12°01'22"W	31.95'
L65	N75°27'23"W	11.70'	L103	N17°33'37"W	32.24'
L66	N21°29'18"W	14.82'	L104	S31°31'04"W	26.44'
L67	S14°27'40"W	16.40'	L105	S62°13'33"W	21.99'
L68	S51°28'E	16.98'	L106	S71°47'22"W	39.35'
L69	S43°23'23"E	26.09'	L107	S63°25'11"W	35.50'
L70	S82°38'34"E	32.01'	L108	S52°40'40"W	13.52'
L71	S85°47'31"E	34.91'	L109	N29°51'34"E	27.77'
L72	N75°57'17"W	25.33'	L110	N10°00'43"E	30.01'
L73	S88°12'32"W	32.78'	L21	N12°44'26"E	43.46'
L74	N64°31'19"E	23.82'	L22	N8°00'00"W	37.63'

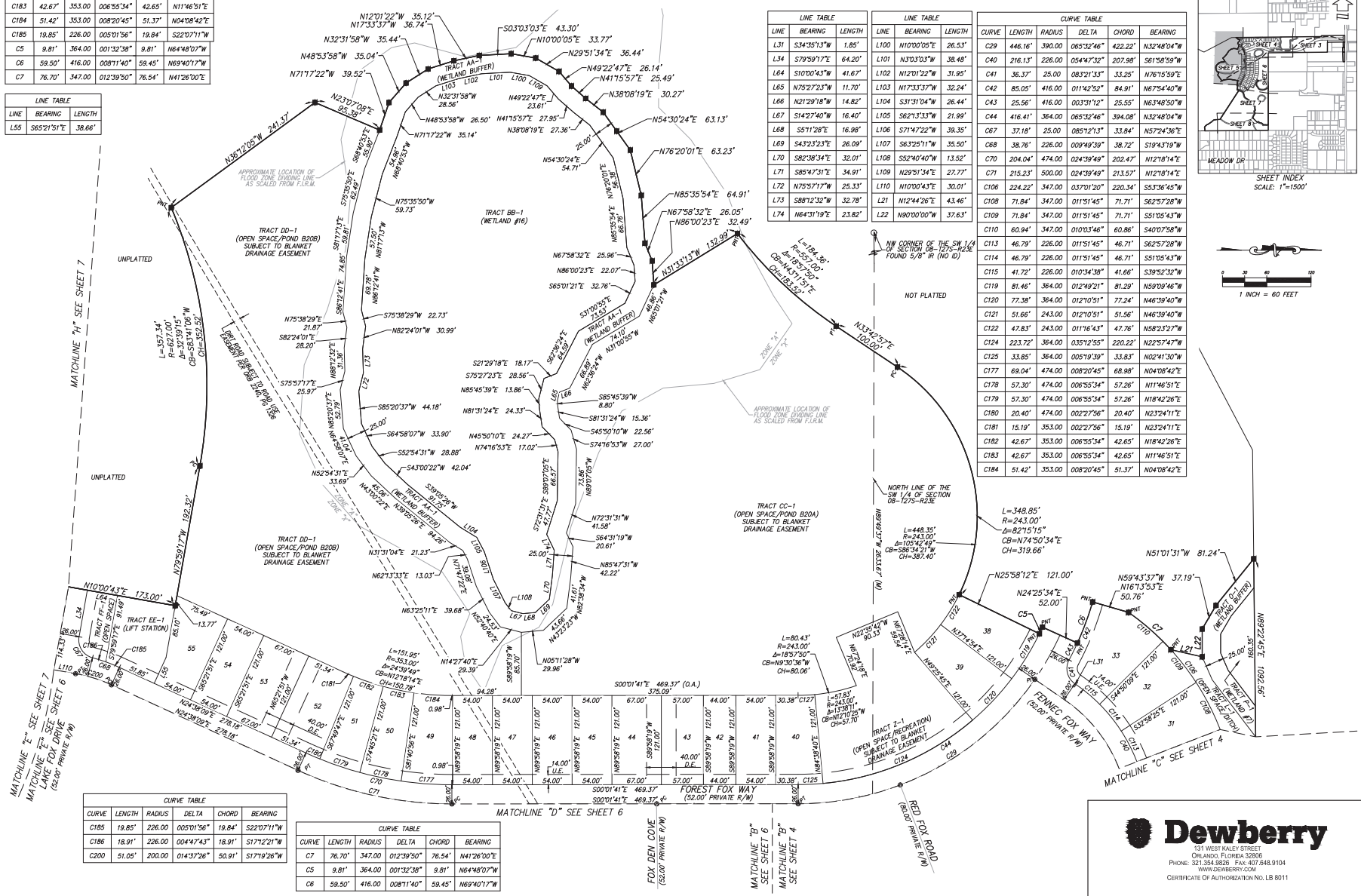
CURVE TABLE				
CURVE	LENGTH	RADIUS	DELTA	BEARING
C29	446.16'	390.00'	065°32'46"	422.22'
C40	216.13'	226.00'	054°47'32"	207.98'
C41	36.37'	25.00'	083°21'33"	33.25'
C42	85.05'	416.00'	011°42'52"	84.91'
C43	25.56'	416.00'	003°31'12"	25.55'
C44	416.41'	364.00'	065°32'46"	394.08'
C67	37.18'	25.00'	085°12'13"	33.84'
C68	38.76'	226.00'	009°49'39"	38.72'
C70	204.04'	474.00'	024°39'49"	202.47'
C71	215.23'	500.00'	024°39'49"	213.57'
C106	224.22'	347.00'	037°01'20"	220.34'
C108	71.84'	347.00'	011°51'45"	71.71'
C109	71.84'	347.00'	011°51'45"	71.71'
C110	60.94'	347.00'	010°03'46"	60.86'
C113	46.79'	226.00'	011°51'45"	46.71'
C114	46.79'	226.00'	011°51'45"	46.71'
C115	41.72'	226.00'	010°34'38"	41.66'
C119	81.46'	364.00'	012°49'21"	81.29'
C120	77.38'	364.00'	012°01'51"	77.24'
C121	51.66'	243.00'	012°01'51"	51.56'
C122	47.83'	243.00'	011°16'43"	47.76'
C124	223.72'	364.00'	035°12'55"	220.22'
C125	33.85'	364.00'	005°19'39"	33.83'
C177	69.04'	474.00'	008°20'45"	68.98'
C178	57.30'	474.00'	006°55'34"	57.26'
C179	57.30'	474.00'	006°55'34"	57.26'
C180	20.40'	474.00'	002°27'56"	20.40'
C181	15.19'	353.00'	002°27'56"	15.19'
C182	42.67'	353.00'	006°55'34"	42.65'
C183	42.67'	353.00'	006°55'34"	42.65'
C184	51.42'	353.00'	008°20'45"	51.37'



SHEET INDEX
SCALE: 1"=1500'



1 INCH = 60 FEET



CURVE TABLE				
CURVE	LENGTH	RADIUS	DELTA	BEARING
C185	19.85'	226.00'	005°01'56"	19.84'
C186	18.91'	226.00'	004°47'43"	18.91'
C200	51.05'	200.00'	014°37'26"	50.91'

CURVE TABLE				
CURVE	LENGTH	RADIUS	DELTA	BEARING
C7	76.70'	347.00'	012°39'50"	76.54'
C5	9.81'	364.00'	001°32'58"	9.81'
C6	59.50'	416.00'	008°11'40"	59.45'

131 WEST KALEY STREET
ORLANDO, FLORIDA 32808
PHONE: 321.354.9828 FAX: 407.648.9104
WWW.DEWBERRY.COM
CERTIFICATE OF AUTHORIZATION NO. LB 8011

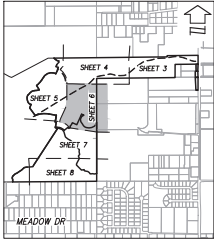
FOX BRANCH RANCH PHASE 1

SITUATED IN SECTION 8, TOWNSHIP 27 SOUTH, RANGE 23 EAST
POLK COUNTY, FLORIDA

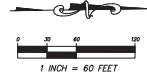
SHEET 6 OF 8

PLAT BOOK:

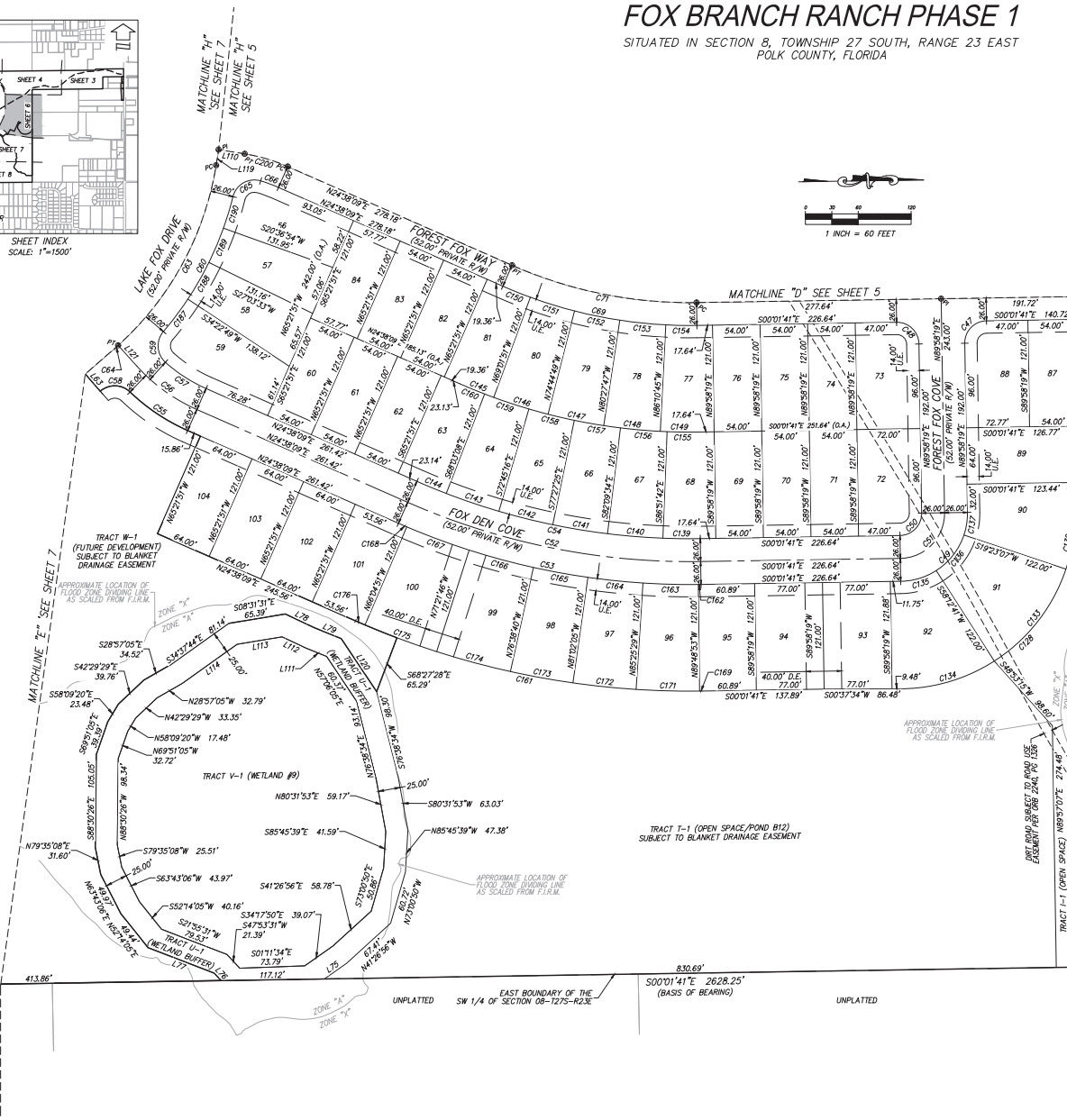
PAGE:



SHEET INDEX
SCALE: 1"=1500'



1 INCH = 60 FEET



MATCHLINE "C"
SEE SHEET 5

MATCHLINE "C"
SEE SHEET 4
FOREST FOX WAY
(52.00' PRIVATE R/W)

CURVE TABLE					CURVE TABLE						
CURVE	LENGTH	RADIUS	DELTA	CHORD	BEARING	CURVE	LENGTH	RADIUS	DELTA	CHORD	BEARING
C47	39.27'	25.00'	090°00'00"	35.36'	S45°01'41"E	C147	64.55'	647.00'	005°42'58"	64.52'	N12°23'42"E
C48	39.27'	25.00'	090°00'00"	35.36'	S44°58'19"W	C148	64.55'	647.00'	005°42'58"	64.52'	N06°40'44"E
C49	120.95'	77.00'	090°00'00"	108.89'	N45°01'41"W	C149	43.46'	647.00'	003°50'56"	43.45'	N01°53'47"E
C50	39.27'	25.00'	090°00'00"	35.36'	N45°01'41"W	C150	33.66'	526.00'	003°40'00"	33.66'	N22°48'09"E
C51	80.11'	51.00'	090°00'00"	72.12'	N45°01'41"W	C151	52.48'	526.00'	005°42'58"	52.45'	N18°06'40"E
C52	341.79'	794.00'	024°39'49"	339.16'	N12°18'14"E	C152	52.48'	526.00'	005°42'58"	52.45'	N12°23'42"E
C53	352.98'	820.00'	024°39'49"	350.26'	N12°18'14"E	C153	52.48'	526.00'	005°42'58"	52.45'	N06°40'44"E
C54	330.60'	768.00'	024°39'49"	328.05'	N12°18'14"E	C154	35.33'	526.00'	003°50'56"	35.33'	N01°53'47"E
C55	79.06'	226.00'	020°02'35"	78.66'	N34°39'26"E	C155	35.75'	647.00'	003°09'58"	35.75'	N01°33'47"E
C56	84.47'	200.00'	024°11'56"	83.84'	N36°44'07"E	C156	53.10'	647.00'	004°42'09"	53.09'	N05°29'22"E
C57	55.20'	174.00'	018°01'37"	54.97'	N33°43'22"E	C157	53.10'	647.00'	004°42'09"	53.09'	N10°11'51"E
C58	37.03'	25.00'	084°51'42"	33.74'	S02°14'52"W	C158	53.10'	647.00'	004°42'09"	53.09'	N14°53'39"E
C59	38.66'	25.00'	088°35'49"	34.92'	N87°06'40"E	C159	53.10'	647.00'	004°42'09"	53.09'	N19°35'48"E
C60	173.86'	376.00'	026°29'35"	172.31'	N61°50'13"W	C160	30.35'	647.00'	002°41'17"	30.35'	N23°17'30"E
C63	237.16'	350.00'	038°49'22"	232.64'	N60°34'36"W	C161	405.07'	941.00'	024°39'49"	401.95'	N12°18'14"E
C64	6.00'	350.00'	000°58'56"	6.00'	N40°40'27"W	C162	3.05'	820.00'	000°12'47"	3.05'	N00°04'43"E
C65	40.41'	25.00'	092°37'22"	36.16'	S28°46'20"E	C163	62.83'	820.00'	004°23'24"	62.81'	N02°22'49"E
C66	21.55'	174.00'	007°05'48"	21.54'	S21°05'15"W	C164	62.83'	820.00'	004°23'24"	62.81'	N06°46'13"E
C69	226.42'	526.00'	024°39'49"	224.68'	N12°18'14"E	C165	62.83'	820.00'	004°23'24"	62.81'	N11°09'38"E
C71	215.23'	500.00'	024°39'49"	213.57'	N12°18'14"E	C166	75.59'	820.00'	005°16'55"	75.57'	N15°59'47"E
C128	306.90'	199.00'	088°21'46"	277.38'	N43°33'20"W	C167	75.59'	820.00'	005°16'55"	75.57'	N21°16'42"E
C132	59.47'	199.00'	017°07'19"	59.25'	N79°10'33"W	C168	10.26'	820.00'	000°43'00"	10.26'	N24°16'39"E
C133	134.85'	199.00'	038°49'34"	132.29'	N51°12'06"W	C169	3.50'	941.00'	000°12'47"	3.50'	N00°04'43"E
C134	112.58'	199.00'	032°24'53"	111.09'	N19°34'53"W	C171	72.10'	941.00'	004°23'24"	72.08'	N02°22'49"E
C135	42.68'	77.00'	031°45'38"	42.14'	N19°34'30"W	C172	72.10'	941.00'	004°23'24"	72.08'	N06°46'13"E
C136	52.18'	77.00'	038°49'34"	51.19'	N51°12'06"W	C173	72.10'	941.00'	004°23'24"	72.08'	N11°09'38"E
C137	26.09'	77.00'	019°24'47"	25.96'	N80°19'17"W	C174	86.75'	941.00'	005°16'55"	86.72'	N15°59'47"E
C139	42.44'	768.00'	003°09'58"	42.44'	N01°33'19"E	C175	86.75'	941.00'	005°16'55"	86.72'	N21°16'42"E
C140	63.03'	768.00'	004°42'09"	63.01'	N05°29'22"E	C176	11.77'	941.00'	000°43'00"	11.77'	N24°16'39"E
C141	63.03'	768.00'	004°42'09"	63.01'	N10°11'51"E	C187	46.13'	376.00'	007°01'46"	46.10'	N52°06'18"W
C142	63.03'	768.00'	004°42'09"	63.01'	N14°53'39"E	C188	48.04'	376.00'	007°19'16"	48.01'	N59°16'49"W
C143	63.03'	768.00'	004°42'09"	63.01'	N19°35'48"E	C189	42.29'	376.00'	006°26'39"	42.27'	N66°09'46"W
C144	36.03'	768.00'	002°41'17"	36.03'	N23°17'30"E	C190	37.40'	376.00'	005°41'55"	37.38'	N72°14'03"W
C145	41.40'	647.00'	003°40'00"	41.40'	N22°48'09"E	C200	51.05'	200.00'	014°37'26"	50.91'	S17°19'26"W
C146	64.55'	647.00'	005°42'58"	64.52'	N18°06'40"E						

131 WEST KALEY STREET
ORLANDO, FLORIDA 32806
PHONE: 321.354.9836 FAX: 407.648.9104
WWW.DEWBERRY.COM
CERTIFICATE OF AUTHORIZATION NO. LB 8014

