

Section 06, Township 32 South, Range 28 East

POLK COUNTY ROADS AND DRAINAGE DIVISION / SURVEYING AND MAPPING SECTION

MAINTAINED RIGHT-OF-WAY MAP FOR
LANTANA ROAD
POLK COUNTY, FLORIDA

CERTIFICATE

I hereby certify that the maintained right-of-way as shown on this map has been:
_____ Maintained or repaired for four or more years by Polk County maintenance
forces, _____ road having been constructed by Polk County; or
_____ Maintained or repaired for seven or more years by Polk County maintenance
forces.

Area Maintenance Manager _____
(Print)

Area Maintenance Manager _____
(Signature)

It is certified that the lands depicted upon this map lying between the lines marked
"maintained right-of-way" are vested in Polk County, Florida, pursuant to the
provisions of Section 95.361, Florida Statutes, by virtue of said road having been
constructed and/or maintained by Polk County as required by Section 95.361.

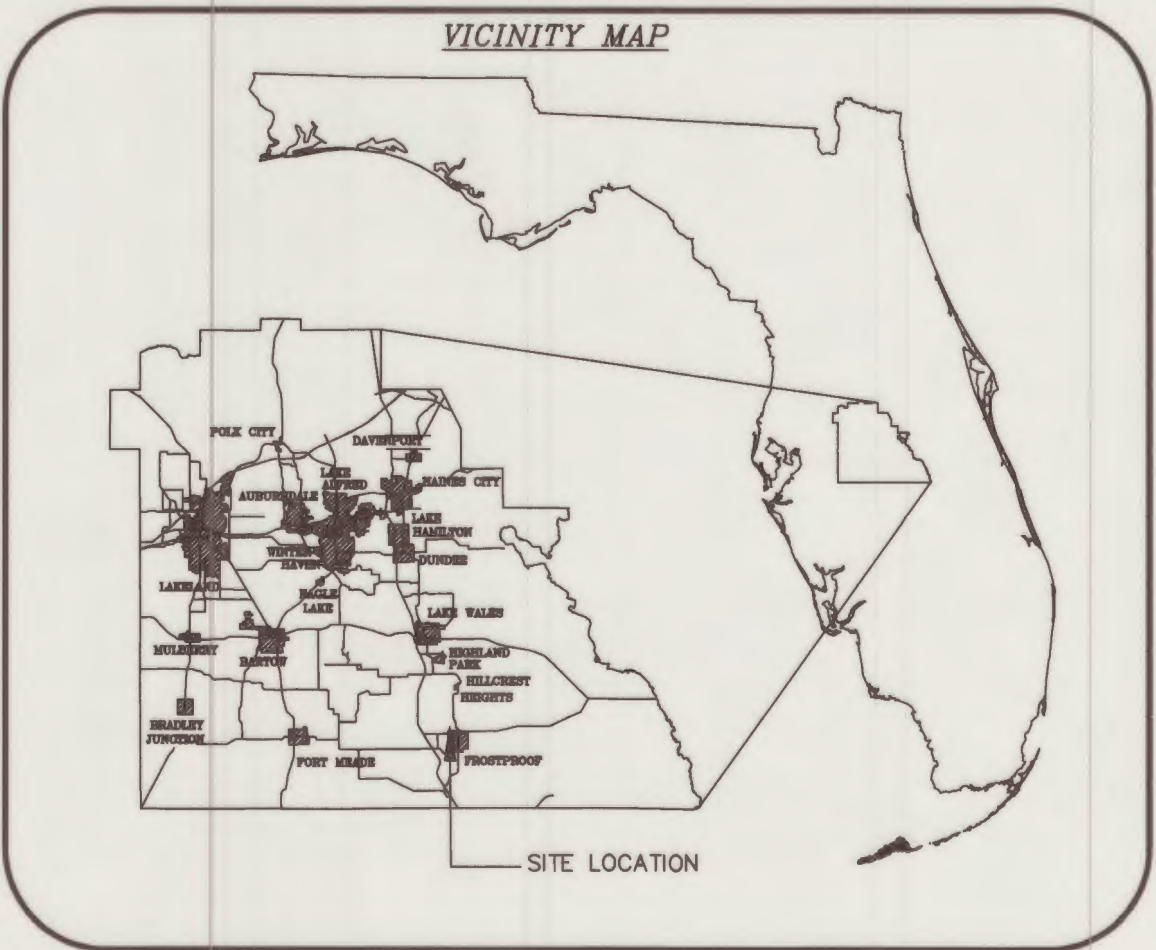
Chairman: _____

Clerk: _____

Approved for Recording: _____ Date
Real Estate Services Director

Filed for record in the office of the Clerk of the Circuit Court for the County of Polk,
State of Florida, in Map Book _____ Page(s) _____ on the _____
day of _____, 20____.

Clerk of Circuit Court
Polk County, Florida



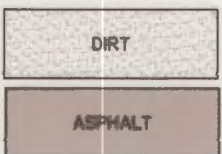
INDEX	
SHEET NO.	SHEET DESCRIPTION
1	COVER SHEET
2-3	M/R/W DETAIL

SURVEY NOTES:

1. All surveyed and calculated bearings, distances, stationing and coordinates shown hereon are grid values referenced to the State Plane Coordinate System, Florida West Zone North American Datum of 1983, adjustment of 2011.
2. All parcel lines and section lines shown hereon are for illustrative purposes only.
3. All found monumentation shown hereon are for information purposes only, additional survey work may be required to determine actual section corners, subdivision corners, or parcel corners.
4. The maintained right-of-way lines shown on this map were field located according to mow lines, constructed roads, edge of dirt roads being graded, or areas being maintained with existing boundaries as being fences, power pole lines, or any obstacle establishing a maintenance boundary. These boundaries are all determined by the unit maintenance supervisor.
5. The original of this map was plotted on mylar and contains original signatures. Attention is directed to the fact that this map may have been altered in size by reproduction if acquired from any other source. This must be considered when obtaining scaled data.

LEGEND:

(C) = CALCULATED
(F) = FIELD
CO = COUNTY
DEFL. = DEFLECTION
L = LEFT
MB = MAP BOOK
M/R/W = MAINTAINED RIGHT-OF-WAY
O.R.B. = OFFICIAL RECORDS BOOK
P.B. = PLAT BOOK
PG. = PAGE
P.I. = POINT OF INTERSECTION
P.S.M. = PROFESSIONAL SURVEYOR AND MAPPER
R = RIGHT
R/W = RIGHT-OF-WAY
SEC = SECTION
SIRC = SET IRON ROD AND CAP
SMND = SET MAG NAIL AND DISK
STA = STATION
TRAV. = TRAVERSE



● = AXLE
○ = IRON PIPE
● = IRON ROD AND CAP
⊙ = MAG NAIL AND DISK

--- M/R/W
--- EXISTING R/W & M/R/W

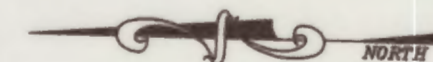
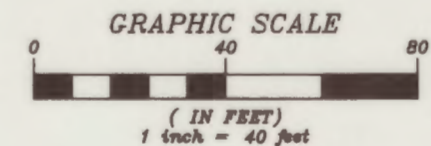
This maintained right-of-way map was prepared and reviewed under my supervision.

4-2-25
Date

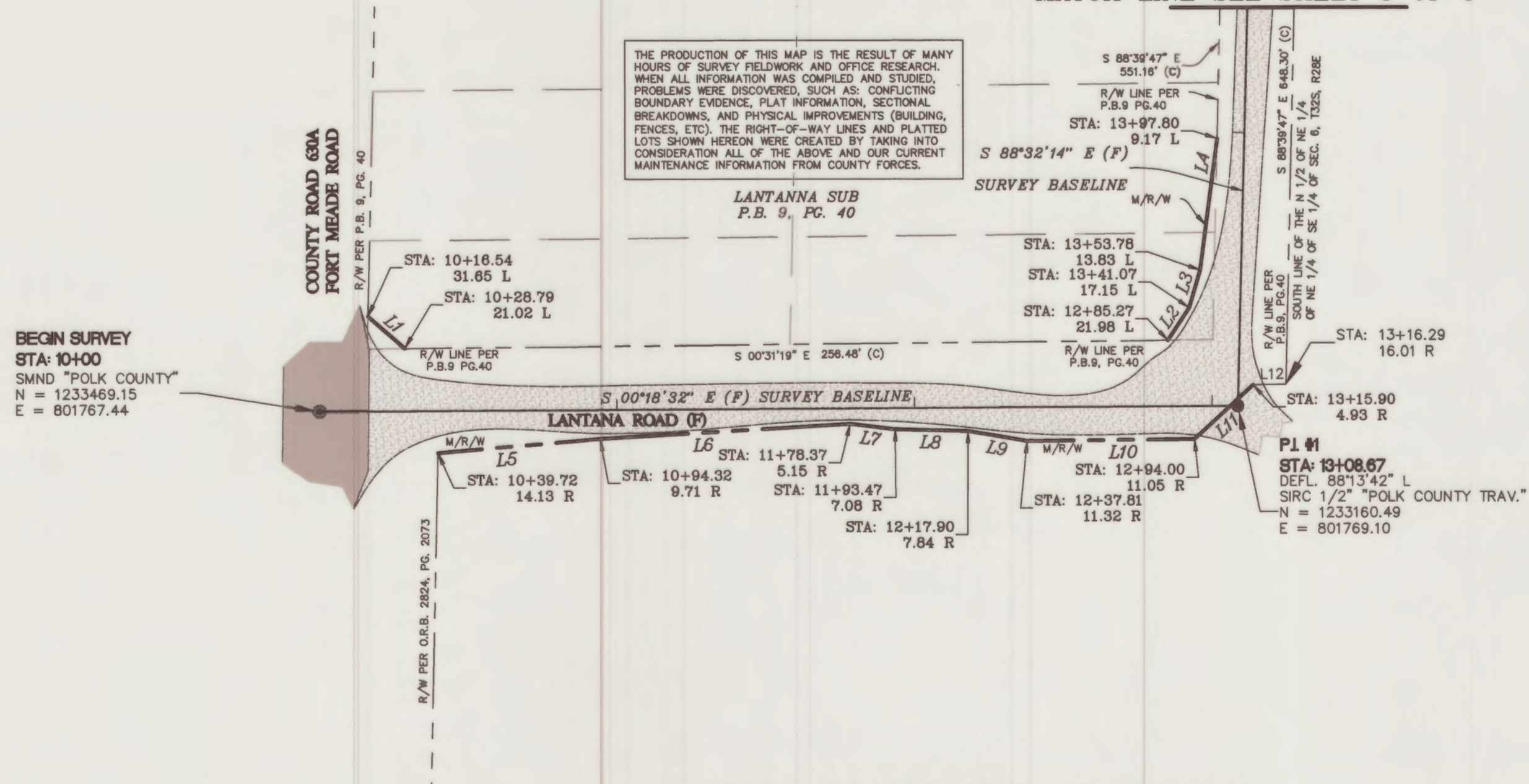
BRYAN C. ZELENENKI, P.S.
Florida Registration #7140
Polk County Surveying and Mapping Section

POLK COUNTY SURVEYING AND MAPPING 3000 SHEFFIELD ROAD, WINTER HAVEN, FL. 33880 PH. 863-535-2200			
Polk County Maintained Right-of-Way Map of:		LANTANA ROAD	Drawn By: MSK 11/30/22
Township 32 S., Range 28 E.	Maintenance Unit: 6	Field Book No. 28-4	Checked By: BCZ 01/22/25
Sections 06	County Road Number: 280602	Field Work Date: 11/21/22	

SECTION 06 TOWNSHIP 32 SOUTH, RANGE 28 EAST



MATCH LINE SEE SHEET 3 OF 3

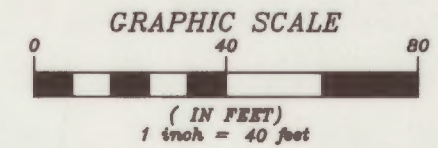


Line Table		
LINE #	DIRECTION	LENGTH
L1	S 40°38'15" W	16.21'
L2	S 56°44'25" E	13.13'
L3	S 73°54'23" E	13.13'
L4	S 82°29'21" E	44.27'
L5	S 4°56'21" E	54.77'
L6	S 3°24'41" E	84.18'
L7	S 6°57'08" W	15.23'
L8	S 1°29'20" W	24.44'
L9	S 9°36'08" W	20.21'
L10	S 0°35'18" E	56.19'
L11	S 42°44'48" E	26.86'
L12	S 0°31'19" E	11.09'

SEE SHEET #1 FOR SURVEYOR'S NOTES AND LEGEND

SECTION 06, TOWNSHIP 32 SOUTH, RANGE 28 EAST

SECTION 05

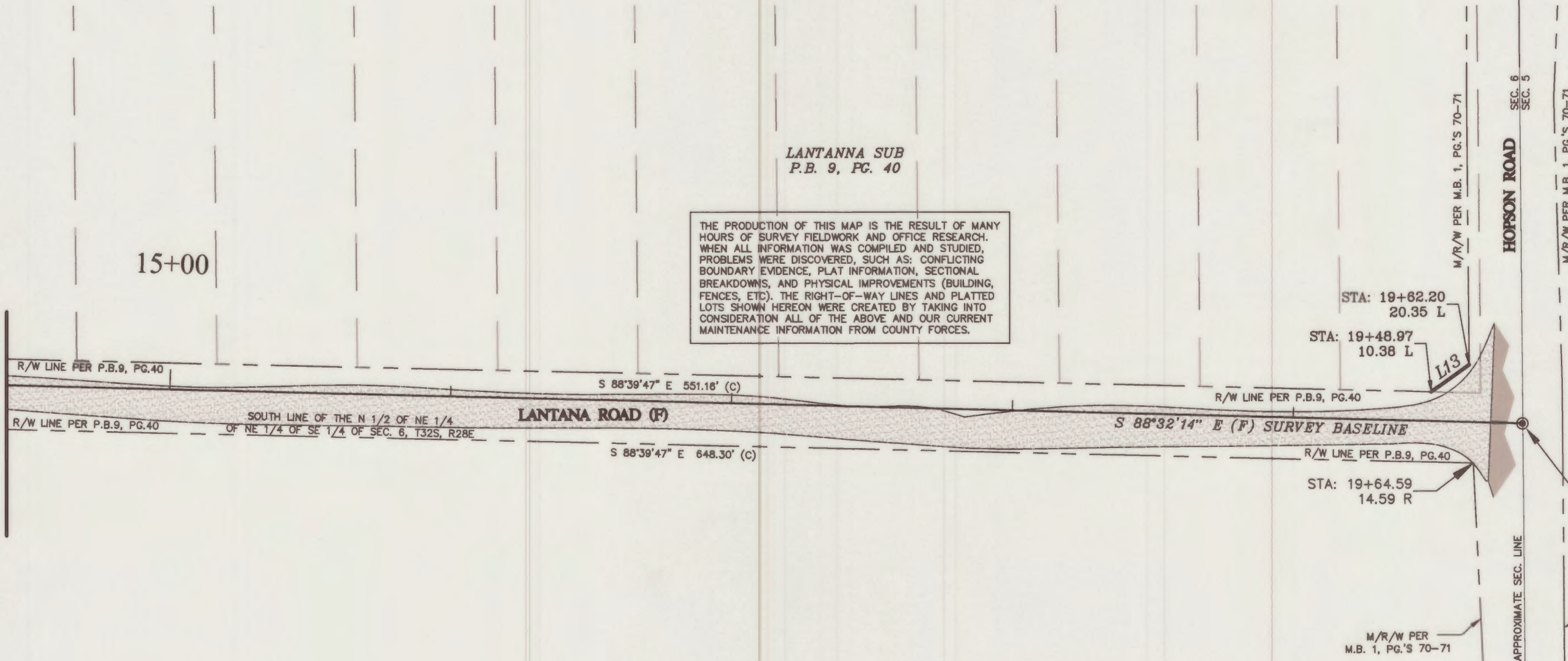


Line Table		
LINE #	DIRECTION	LENGTH
L13	N 54°27'51" E	16.57'

THE PRODUCTION OF THIS MAP IS THE RESULT OF MANY HOURS OF SURVEY FIELDWORK AND OFFICE RESEARCH. WHEN ALL INFORMATION WAS COMPILED AND STUDIED, PROBLEMS WERE DISCOVERED, SUCH AS: CONFLICTING BOUNDARY EVIDENCE, PLAT INFORMATION, SECTIONAL BREAKDOWNS, AND PHYSICAL IMPROVEMENTS (BUILDING, FENCES, ETC). THE RIGHT-OF-WAY LINES AND PLATTED LOTS SHOWN HEREON WERE CREATED BY TAKING INTO CONSIDERATION ALL OF THE ABOVE AND OUR CURRENT MAINTENANCE INFORMATION FROM COUNTY FORCES.

LANTANNA SUB
P.B. 9, PG. 40

MATCH LINE SEE SHEET 2 OF 3



END SURVEY
STA: 19+81.74
SMND "POLK COUNTY"
N = 1233143.30
E = 802441.96

SEE SHEET #1 FOR SURVEYOR'S NOTES AND LEGEND