

RESOLUTION NO.: _____

WHEREAS the Polk County Roads & Drainage Division conducted speed studies on the following County maintained Urban Collector roads:

Grandview Parkway (Road Number 671701); from Ernie Caldwell Boulevard to Dead End North, and

Posner Boulevard (Road Number 671815); from US Highway 27 to Grandview Parkway, and

WHEREAS said studies were made in accordance with the procedures established by the State of Florida Department of Transportation, and it was subsequently determined that postings of 35 M.P.H. are reasonable, and

WHEREAS under the laws of the State of Florida, the Board of County Commissioners is vested with the authority to establish speed limits on County maintained roads,

NOW, THEREFORE, BE IT RESOLVED that the Polk County Roads & Drainage Division is herewith directed to cause Grandview Parkway to be posted 35 M.P.H. from Ernie Caldwell Boulevard to Dead End North; and Posner Boulevard to be posted 35 M.P.H. from US Highway 27 to Grandview Parkway.

Adopted in Regular Session duly assembled this 21st day of April 2026.

Attest:
Stacy M. Butterfield, Clerk

Board of County Commissioners
Polk County, Florida

By: _____
Deputy Clerk

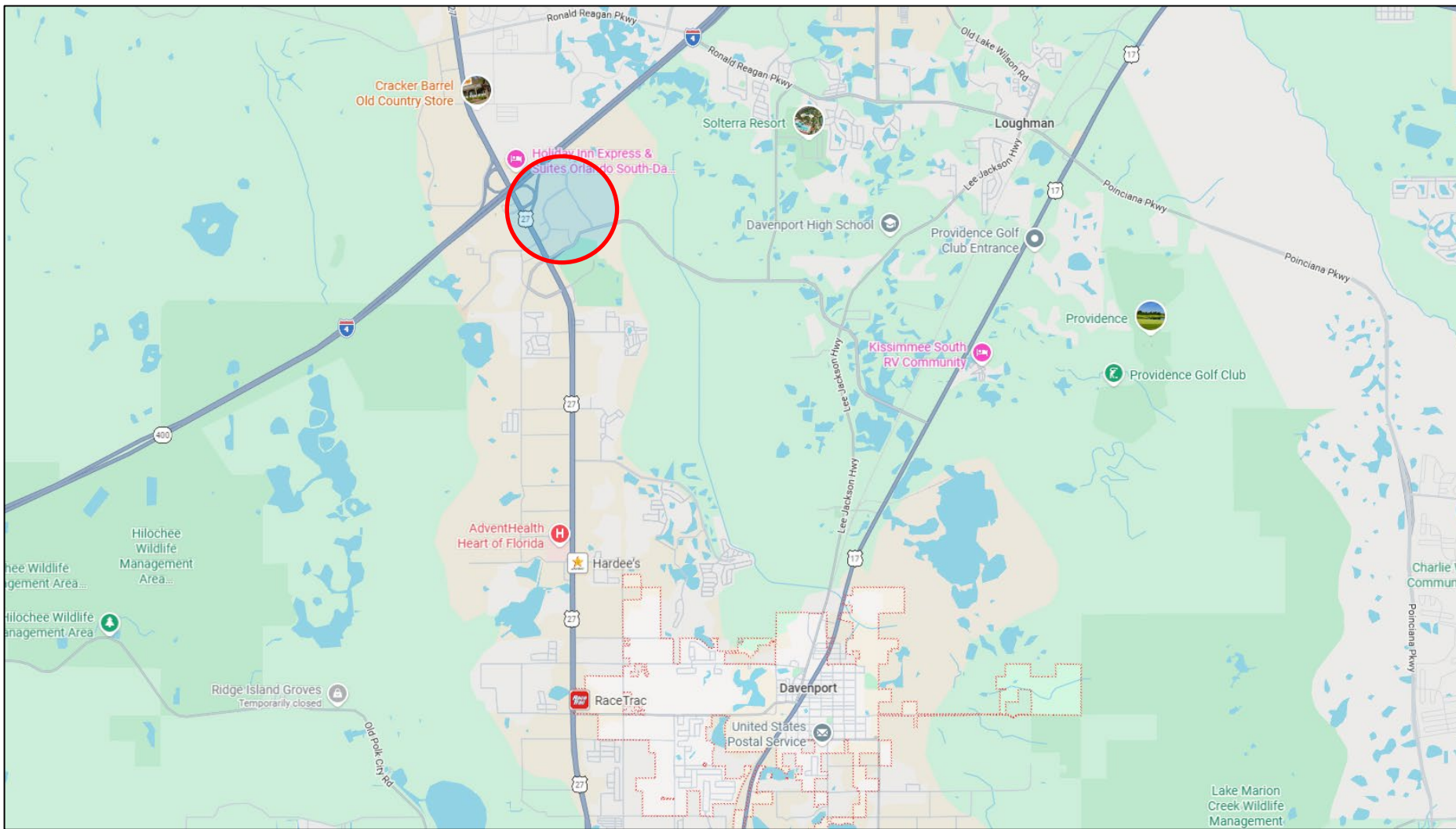
By: _____
Martha Santiago, Ed.D., Chair



Grandview Pkwy & Posner Blvd (Davenport Area)

Request for Speed Limit Postings

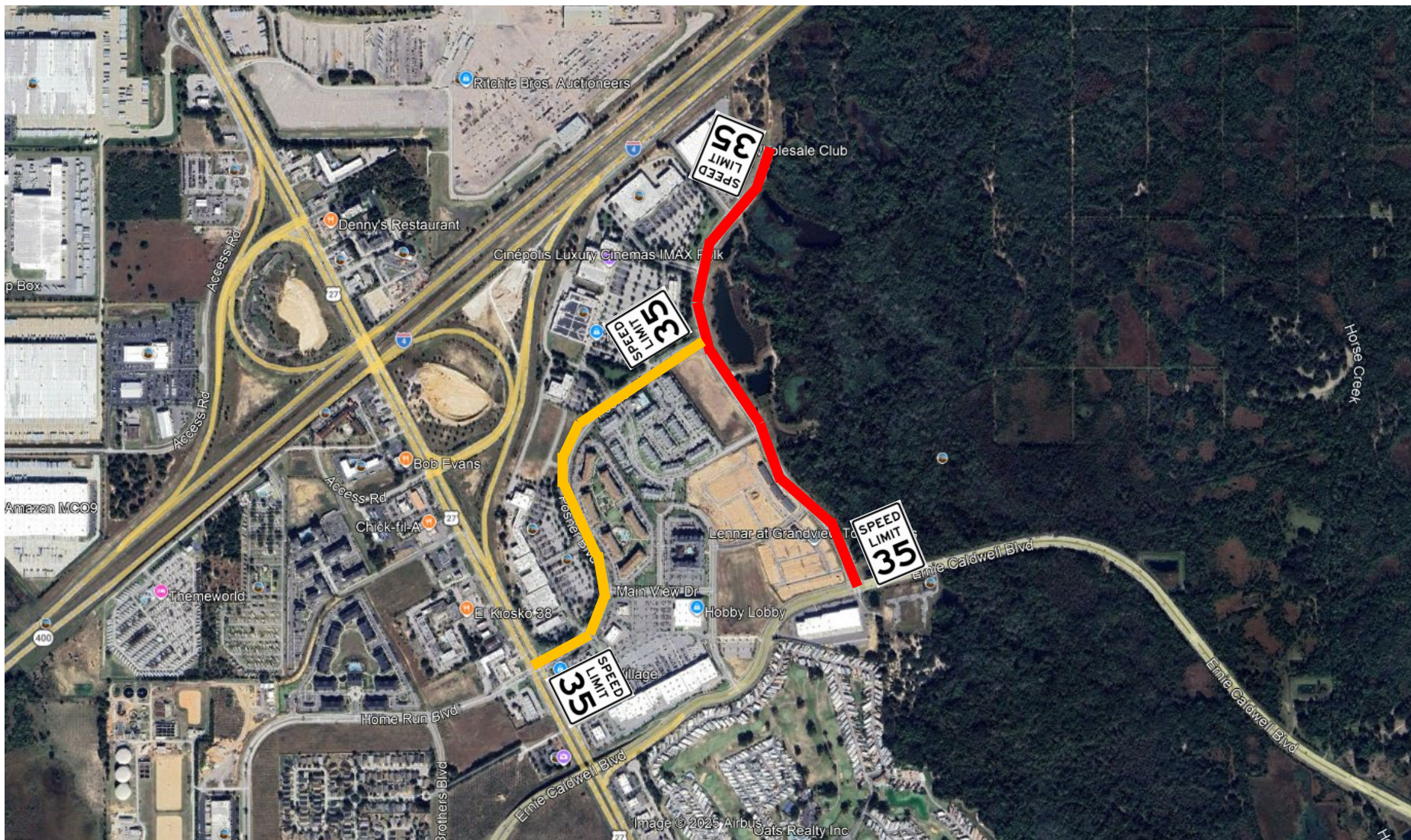
Vicinity Map





Grandview Pkwy & Posner Blvd (Davenport Area)

Request for Speed Limit Postings





**POLK COUNTY TRANSPORTATION DIVISION
SPEED STUDY**

ROAD DESCRIPTION

Road Name	Grandview Pkwy			Road Number	671701
Section	17	Township	26 S	Range	27 E
Commission District	4	Maintenance Unit	R4	Functional Classification	UC
From	Ernie Caldwell Blvd	Node	N/A	Mile Post	0.00
To	Dead End North	Node	N/A	Mile Post	0.83

REASON FOR RESOLUTION

Customer Service Request #	N/A	Internal Request	✓	External Request	
New Posting		Speed Adjustment	✓		
External Agency Name (If Applicable)					
Problem Statement: Newly-transferred road to Polk County; does not have a resolution for speed limit.					

TEST RUN SPEEDS

Test Run Speed #1 in M.P.H.	None	Comments:	85th Percentile
Test Run Speed #2 in M.P.H.	None	Comments:	85th Percentile
Test Run Speed #3 in M.P.H.	None	Comments:	85th Percentile

ROADWAY ALIGNMENT

Number of Hills	2	Number of Curves	5	Number of Turns	0
Lane Width (ft)	10	Number of Lanes	2	Shoulder Width (ft)	0
Number of School Zones	None	Posted Speed of School Zones	None	Pavement Condition	Good
Number of Intersections	7	Sight Distance of Intersections	Adequate		
Number of Driveways	0	Sight Distance of Driveways	Adequate		
Number of Stop Signs	1	Number of Signals	0		

SPEED LIMIT INFORMATION

Current Speed Limit Posting (M.P.H.)	35				
Proposed Speed Limit Posting (M.P.H.)	35				
From Mile Post	0.000				
To Mile Post	0.830				

Notes:
Traffic Data was collected at one location in the area. The 85th percentile speed was 37 mph. The proposed posting considers the 85th percentile speed.

Review conducted by	Holly Toley & Andrew Jones	Date	1/21/2025
Entered by	Steve Logan	Date	4/1/2026
Concurred/authorized by Traffic Engineer	Amy J. Gregory, P.E.	Date	04/02/26
Signature			



**POLK COUNTY TRANSPORTATION DIVISION
SPEED STUDY**

ROAD DESCRIPTION

Road Name	Posner Blvd			Road Number	671815
Section	18	Township	26 S	Range	27 E
Commission District	4	Maintenance Unit	R4	Functional Classification	UC
From	US Hwy 27	Node	N/A	Mile Post	0.00
To	Grandview Pkwy	Node	N/A	Mile Post	0.71

REASON FOR RESOLUTION

Customer Service Request #	N/A	Internal Request	✓	External Request	
New Posting		Speed Adjustment	✓		
External Agency Name (If Applicable)					
Problem Statement: Newly-transferred road to Polk County; does not have a resolution for speed limit.					

TEST RUN SPEEDS

Test Run Speed #1 in M.P.H.	None	Comments:	85th Percentile
Test Run Speed #2 in M.P.H.	None	Comments:	85th Percentile
Test Run Speed #3 in M.P.H.	None	Comments:	85th Percentile

ROADWAY ALIGNMENT

Number of Hills	1	Number of Curves	2	Number of Turns	0
Lane Width (ft)	10	Number of Lanes	2	Shoulder Width (ft)	0
Number of School Zones	None	Posted Speed of School Zones	None	Pavement Condition	Good
Number of Intersections	8	Sight Distance of Intersections	Adequate		
Number of Driveways	0	Sight Distance of Driveways	Adequate		
Number of Stop Signs	1	Number of Signals	1		

SPEED LIMIT INFORMATION

Current Speed Limit Posting (M.P.H.)	None				
Proposed Speed Limit Posting (M.P.H.)	35				
From Mile Post	0.000				
To Mile Post	0.710				

Notes:
Traffic Data was collected at one location in the area. The 85th percentile speed was 37 mph. The proposed posting considers the 85th percentile speed.

Review conducted by	Holly Toley & Andrew Jones	Date	1/21/2025
Entered by	Steve Logan	Date	4/1/2026
Concurred/authorized by Traffic Engineer	Amy J. Gregory, P.E.	Date	04/02/26
Signature			