

RESOLUTION NO.: _____

WHEREAS, the Board of County Commissioners, by adopting a Resolution on October 15, 2003, attached hereto as Exhibit "A", caused Essex Avenue South, a County maintained Local Residential road, to be posted 25 M.P.H.,

WHEREAS, the Polk County Roads & Drainage Division has since conducted speed studies for Essex Avenue South (Road Number 931229) from Dead End South to Alamo Drive West. Located in S-12, T-29S, R-23E, and

WHEREAS, said studies were made in accordance with the procedures established by the State of Florida Department of Transportation, and said studies verified that a posting of 20 M.P.H. is reasonable, and

WHEREAS, under the laws of the State of Florida, the Board of County Commissioners is vested with the authority to establish speed limits on County maintained roads,

NOW, THEREFORE, BE IT RESOLVED that the Polk County Roads & Drainage Division is herewith directed to cause Essex Avenue South to be posted 20 M.P.H., from Dead End South to Alamo Drive West Further, the Resolution dated October 15, 2003, attached hereto as Exhibit "A", is hereby amended to the extent it is in conflict with this Resolution to reflect the speed limits established herein for Essex Avenue South; all remaining provisions shall not be affected or impaired by this Resolution. The provisions of this Resolution shall supersede and control the speed limits established by this Resolution when the provisions of this Resolution are deemed to be inconsistent with the provisions of any previously adopted Resolution or BoCC agenda item including, but not limited to the agenda item dated October 15, 2003, attached hereto as Exhibit "A."

DATED this 16th day of July 2024.

A11

OCT 15 2003 VOLUME 167

Exhibit "A"

001464

RESOLUTION NO. _____

RESOLUTION

WHEREAS The Polk County Transportation Department, Traffic Engineering and Operations Division has made speed studies on the following County maintained roadways:

- * (CR 882909), Sun Air Boulevard, a Local Residential Roadway, located in S-29, T-28S, R-28E; from Palm Way South (Mile Post 00.000) to Jack Watkins Road (Mile Post 00.012);
- * (CR 882904), Palm Way, a Local Residential Roadway, located in S-29, T-28S, R-28E; from Woodland Circle (Mile Post 00.000) to Sun Air Boulevard (Mile Post 00.070);
- * (CR 882906), Pine Lane, a Local Residential Roadway, located in S-29, T-28S, R-28E; from Woodland Circle (Mile Post 00.000) to Sun Air Boulevard (Mile Post 00.060);
- * (CR 882907), Woodland Circle, a Local Residential Roadway, located in S-29, T-28S, R-28E; from Woodland Circle (Mile Post 00.000) to Sun Air Boulevard (Mile Post 00.350);
- * (CR 882911), Rough Lane, a Local Residential Roadway, located in S-29, T-28S, R-28E; from Dead End South (Mile Post 00.000) to Jack Watkins Road (Mile Post 00.150);
- * (CR 882912), Iron Lane, a Local Residential Roadway, located in S-29, T-28S, R-28E; from Rough Lane (Mile Post 00.000) to Fairview Drive South (Mile Post 00.090);
- * (CR 882913), Green Lane, a Local Residential Roadway, located in S-29, T-28S, R-28E; from Fairview Drive South (Mile Post 00.000) to Jack Watkins Road (Mile Post 00.050);
- * (CR 882914), Fairview Drive South, a Local Residential Roadway, located in S-29, T-28S, R-28E; from Rough Lane (Mile Post 00.000) to Dead End East (Mile Post 00.180);
- * (CR 882915), Fairview Court, a Local Residential Roadway, located in S-29, T-28S, R-28E; from Fairview Drive South (Mile Post 00.000) to Fairview Drive North (Mile Post 00.039);

Board of County Commissioners
Resolution Setting Speed Limit
October 15, 2003
Page 2

- * (CR 882916), Fairview Drive North, a Local Residential Roadway, located in S-29, T-28S, R-28E; from Rough Lane (Mile Post 00.000) to Dead End East (Mile Post 00.180);
- * (CR 673203), Ashley Loop, a Local Residential Roadway, located in S-32, T-26S, R-27E; from Holly Hill Road (Mile Post 00.000) to Holly Hill Road (Mile Post 00.250);
- * (841038) (United Drive North)
* (CR 840904), Canal Drive North, a Local Residential Roadway, located in S-09, T-28S, R-24E; from East Lake Parker Drive (Mile Post 00.000) to Canal Drive East Mile Post 00.450);
- * (CR 941628), Cason Way, a Local Residential Roadway, located in S-16, T-29S, R-24E; from Dead End West (Mile Post 00.000) to Pollard Road (Mile Post 00.210);
- * (CR 830403), Chabett Avenue, a Local Residential Roadway, located in S-04, T-28S, R-23E; from Dead End South (Mile Post 00.000) to CR 582 (Mile Post 00.240);
- * (CR 930201), Country Bend East, a Local Residential Roadway, located in S-02, T-29S, R-23E; from Country Bend South (Mile Post 00.000) to Dead End North (Mile Post 00.230);
- * (CR 930202), Village Road, a Local Residential Roadway, located in S-02, T-29S, R-23E; from Country Bend East (Mile Post 00.000) to South Pipkin Road (Mile Post 00.060);
- * (CR 930327), Country Circle, a Local Residential Roadway, located in S-03, T-29S, R-23E; from Country Loop North (Mile Post 00.000) to Dead End (Mile Post 00.050);
- * (CR 930323), Country Loop West, a Local Residential Roadway, located in S-03, T-29S, R-23E; from Country Loop South (Mile Post 00.000) to Dead End North (Mile Post 00.130);
- * (CR 930333), Country Road, a Local Residential Roadway, located in S-03, T-29S, R-23E; from Country Loop North (Mile Post 00.000) to SR 572 (Mile Post 00.070);

Board of County Commissioners
Resolution Setting Speed Limit
October 15, 2003
Page 3

* (CR 930324), Country Loop North, a Local Residential Roadway, located in S-03, T-29S, R-23E; from Country Loop West (Mile Post 00.000) to Country Bend East (Mile Post 00.280);

(CR 930322), Country Loop South, a Local Residential Roadway, located in S-03, T-29S, R-23E; from Country Loop West (Mile Post 00.000) to Country Loop East (Mile Post 00.180);

(CR 732447), Daughtery Downs Loop, a Local Residential Roadway, located in S-24, T-27S, R-23E; from West Daughtery Road (Mile Post 00.000) to West Daughtery Road (Mile Post 00.350);

(CR 832314), Dorothy Street, a Local Residential Roadway, located in S-23, T-28S, R-23E; from Plateau Avenue (Mile Post 00.000) to Dead End East (Mile Post 00.240);

(CR 931229), Essex Avenue, a Local Residential Roadway, located in S-12, T-29S, R-23E; from Dead End South (Mile Post 00.000) to West Alamo Drive (Mile Post 00.520);

(CR 730206), Hall Road, a Local Residential Roadway, located in S-02, T-27S, R-23E; from US 98 (Mile Post 00.000) to Dead End East (Mile Post 00.680);

(CR 731710), Hammock View, a Local Residential Roadway, located in S-17, T-27S, R-23E; from Dead End West (Mile Post 00.000) to Forest Way (Mile Post 00.190);

(CR 731709), Havenwood Oak, a Local Residential Roadway, located in S-17, T-27S, R-23E; from Rolling Oak (Mile Post 00.000) to Dead End North (Mile Post 00.170);

(CR 832310), Greenwood Street West, a Local Residential Roadway, located in S-23, T-28S, R-23E; from Southern Avenue (Mile Post 00.000) to Dead End East (Mile Post 00.130);

(CR 832225), Nokomis Avenue South, a Local Residential Roadway, located in S-22, T-28S, R-23E; from West Belmar Street (Mile Post 00.000) to Clyde Street (Mile Post 00.100);

**Board of County Commissioners
Resolution Setting Speed Limit
October 15, 2003
Page 4**

(CR 731713), Oak Haven, a Local Residential Roadway, located in S-17, T-27S, R-23E; from Rolling Oak (Mile Post 00.000) to Dead End North (Mile Post 00.150);

(CR 731707), Oak Terrace Drive, a Local Residential Roadway, located in S-17, T-27S, R-23E; from Rolling Oak Drive (Mile Post 00.000) to Meadowview (Mile Post 00.250);

(CR 932912), Ramblewood North, a Local Residential Roadway, located in S-29, T-29S, R-23E; from Ramblewood West (Mile Post 00.000) to Ramblewood East (Mile Post 00.180);

(CR 941504), Royal Court North, a Local Residential Roadway, located in S-15, T-29S, R-24E; from Royal Court S/N (Mile Post 00.000) to Yarborough Lane (Mile Post 00.060);

(CR 832301), Suwannee Avenue, a Local Residential Roadway, located in S-23, T-28S, R-23E; from West Patterson Street (Mile Post 00.000) to West Highland Street (Mile Post 00.120);

(CR 832203), Lebanon Road, a Local Residential Roadway, located in S-22, T-28S, R-23E; from West Highland Street (Mile Post 00.000) to Tennessee Road (Mile Post 00.660);

(CR 730204), West Dees Road, a Local Residential Roadway, located in S-02, T-27S, R-23E; from West Dees Road (Mile Post 00.000) to North Dees Road *Bracy Lane (Mile Post 00.660);

(CR 730105), North Dees Road, a Local Residential Roadway, located in S-01, T-27, R-23 from West Dees Road (Mile Post 00.000) to Dead End North (Mile Post 00.180);

(CR 730104), Mattie Drive, a Local Residential Roadway, located in S-01, T-27S, R-23E; from North Dees Road (Mile Post 00.000) to Dead End (Mile Post 00.180);

(CR 952701), Taylor Court, a Local Residential Roadway, located in S-27, T-29S, R-25E; from Dead End South (Mile Post 00.000) to Morris Drive (Mile Post 00.003);

Board of County Commissioners
Resolution Setting Speed Limit
October 15, 2003
Page 5

(CR 952713), Mays Court, a Local Residential Roadway, located in S-27, T-29S, R-25E; from Simpson Drive (Mile Post 00.000) to Dead End North (Mile Post 00.020);

STOWE

(CR 952711), Stone Place, a Local Residential Roadway, located in S-27, T-29S, R-25E; from Simpson Drive (Mile Post 00.000) to Dead End North (Mile Post 00.020);

(CR 952710), Tiger Circle, a Local Residential Roadway, located in S-27, T-29S, R-25E; from Simpson Drive (Mile Post 00.000) to Dead End North (Mile Post 00.060);

(CR 852103), Autumn Wood Drive, a Local Residential Roadway, located in S-21, T-28S, R-25E; from Summer Hollow Drive (Mile Post 00.000) to Winter Ridge Drive (Mile Post 00.090);

(CR 852130), Pinewood Drive, a Local Residential Roadway, located in S-21, T-28S, R-25E; from Spring Way Drive (Mile Post 00.000) to Lake Shore Parkway (Mile Post 00.220);

(CR 852134), Plum Avenue, a Local Residential Roadway, located in S-21, T-28S, R-25E; from Thompson Street (Mile Post 00.000) to Stanton Street (Mile Post 00.140);

(CR 852117), Thompson Street, a Local Residential Roadway, located in S-21, T-28S, R-25E; from King Avenue (Mile Post 00.000) to Plum Avenue (Mile Post 00.200);

(CR 852119), Tiny Terrace, a Local Residential Roadway, located in S-21, T-28S, R-25E; from Thompson Street (Mile Post 00.000) to Plum Avenue (Mile Post 00.090);

(CR 852109), Spring Way Drive, a Local Residential Roadway, located in S-21, T-28S, R-25E; from Summer Hollow Drive (Mile Post 00.000) to Winter Ridge Road (Mile Post 00.080);

(CR 852114), Fowler Avenue, a Local Residential Roadway, located in S-215, T-28S, R-25E; from Edmond Circle West (Mile Post 00.000) to Nelson Street (Mile Post 00.150);

OCT 15 2003 VOLUME 1 67

**Board of County Commissioners
Resolution Setting Speed Limit
October 15, 2003
Page 6**

(CR 852116), Sun Rise Terrace, a Local Residential Roadway, located in S-21, T-28S, R-25E; from Nelson Street (Mile Post 00.000) to Dead End East (Mile Post 00.070);

(CR 852107), Nelson Street, a Local Residential Roadway, located in S-21, T-28S, R-25E; from Fowler Avenue (Mile Post 00.000) to Summer Hollow Drive (Mile Post 00.220);

(CR 852124), Summer Hollow Drive, a Local Residential Roadway, located in S-21, T-28S, R-25E; from Autumn Wood Drive (Mile Post 00.000) to Spring Way Drive (Mile Post 00.140);

(CR 852122), Peach Avenue, a Local Residential Roadway, located in S-21, T-28S, R-25E; from Thompson Street (Mile Post 00.000) to Stanton Street (Mile Post 00.190);

(CR 852126), Cherry Avenue, a Local Residential Roadway, located in S-21, T-28S, R-25E; from Thompson Street (Mile Post 00.000) to Stanton Street (Mile Post 00.130);

(CR 852121), Garden Street, a Local Residential Roadway, located in S-21, T-28S, R-25E; from Cherry Avenue (Mile Post 00.000) to Plum Avenue (Mile Post 00.160);

(CR 852132), Winter Ridge Drive, a Local Residential Roadway, located in S-21, T-28S, R-25E; from Autumn Wood Drive (Mile Post 00.000) to Spring Way Drive (Mile Post 00.230);

(CR 832239), Highlands Street West, a Local Residential Roadway, located in S-22, T-28S, R-23E; from McIntosh Drive (Mile Post 00.000) to West Highlands Street (Mile Post 00.060);

(CR 832235), MacLean Court, a Local Residential Roadway, located in S-22, T-28S, R-23E; from Dead End South (Mile Post 00.000) to McGregor Street (Mile Post 00.090);

(CR 832211), Memphis Road, a Local Residential Roadway, located in S-22, T-28S, R-23E; from Trenton Road (Mile Post 00.000) to Nashville Road (Mile Post 00.100);

OCT 15 2003 VOLUME 1 67

Board of County Commissioners
Resolution Setting Speed Limit
October 15, 2003
Page 7

(CR 832224), Sparta Road, a Local Residential Roadway, located in S-22, T-28S, R-23E; from Lebanon Road (Mile Post 00.000) to CR 542 (Mile Post 00.100);

(CR 832220), Gallatin Road, a Local Residential Roadway, located in S-22, T-28S, R-23E; from Lebanon Road (Mile Post 00.000) to West Highlands Street (Mile Post 00.100);

(CR 731708), Pleasant Way, a Local Residential Roadway, located in S-17, T-27S, R-23E; from Forest Way (Mile Post 00.000) to Dead End East (Mile Post 00.120);

(CR 840923), Inwood Lane, a Local Residential Roadway, located in S-09, T-28S, R-24E; from Jungle Street (Mile Post 00.000) to Dead End North (Mile Post 00.060);

(CR 841025), Canal Drive East, a Local Residential Roadway, located in S-10, T-28S, R-24E; from Hardin Combee Road (Mile Post 00.000) to Canal Drive North (Mile Post 00.120);

(CR 770903), Carter Road, a Local Residential Roadway, located in S-09, T-27S, R-27E; from Patterson Road (Mile Post 00.000) to Dead End North (Mile Post 00.080).

WHEREAS said studies were made in accordance with procedures established by the State of Florida Department of Transportation, and

WHEREAS under the laws of the State of Florida, the Board of County Commissioners is vested with the authority to establish speed limits on County maintained roads,

NOW, THEREFORE, BE IT RESOLVED that the Polk County Transportation Department, Traffic Engineering and Operations Division be and is herewith directed to cause said County maintained roadways to be posted as follows:

OCT 15 2003 VOLUME 167

Board of County Commissioners
Resolution Setting Speed Limit
October 15, 2003
Page 8

(CR 882909), Sun Air Boulevard, a Local Residential Roadway, located in S-29, T-28S, R-28E; from Palm Way South (Mile Post 00.000) to Jack Watkins Road (Mile Post 00.012) – to be posted 25 M.P.H.;

(CR 882904), Palm Way, a Local Residential Roadway, located in S-29, T-28S, R-28E; from Woodland Circle (Mile Post 00.000) to Sun Air Boulevard (Mile Post 00.070) – to be posted 20 M.P.H.;

(CR 882906), Pine Lane, a Local Residential Roadway, located in S-29, T-28S, R-28E; from Woodland Circle (Mile Post 00.000) to Sun Air Boulevard (Mile Post 00.060) – to be posted 20 M.P.H.;

(CR 882907), Woodland Circle, a Local Residential Roadway, located in S-29, T-28S, R-28E; from Woodland Circle (Mile Post 00.000) to Sun Air Boulevard (Mile Post 00.350) – to be posted 20 M.P.H.;

(CR 882911), Rough Lane, a Local Residential Roadway, located in S-29, T-28S, R-28E; from Dead End South (Mile Post 00.000) to Jack Watkins Road (Mile Post 00.150) – to be posted 20 M.P.H.;

(CR 882912), Iron Lane, a Local Residential Roadway, located in S-29, T-28S, R-28E; from Rough Lane (Mile Post 00.000) to Fairview Drive South (Mile Post 00.090) – to be posted 20 M.P.H.;

(CR 882913), Green Lane, a Local Residential Roadway, located in S-29, T-28S, R-28E; from Fairview Drive South (Mile Post 00.000) to Jack Watkins Road (Mile Post 00.050) – to be posted 20 M.P.H.;

(CR 882914), Fairview Drive South, a Local Residential Roadway, located in S-29, T-28S, R-28E; from Rough Lane (Mile Post 00.000) to Dead End East (Mile Post 00.180) – to be posted 20 M.P.H.;

(CR 882915), Fairview Court, a Local Residential Roadway, located in S-29, T-28S, R-28E; from Fairview Drive South (Mile Post 00.000) to Fairview Drive North (Mile Post 00.039) – to be posted 20 M.P.H.;

(CR 882916), Fairview Drive North, a Local Residential Roadway, located in S-29, T-28S, R-28E; from Rough Lane (Mile Post 00.000) to Dead End East (Mile Post 00.180) – to be posed 20 M.P.H.;

**Board of County Commissioners
Resolution Setting Speed Limit
October 15, 2003
Page 9**

(CR 673203), Ashley Loop, a Local Residential Roadway, located in S-32, T-26S, R-27E; from Holly Hill Road (Mile Post 00.000) to Holly Hill Road (Mile Post 00.250)- to be posted 25 M.P.H.;

(CR 840904), Canal Drive North, a Local Residential Roadway, located in S-09, T-28S, R-24E; from East Lake Parker Drive (Mile Post 00.000) to Canal Drive East Mile Post 00.450) – to be posted 25 M.P.H.;

(CR 941628), Cason Way, a Local Residential Roadway, located in S-16, T-29S, R-24E; from Dead End West (Mile Post 00.000) to Pollard Road (Mile Post 00.210) – to be posted 25 M.P.H.;

(CR 830403), Chabett Avenue, a Local Residential Roadway, located in S-04, T-28S, R-23E; from Dead End South (Mile Post 00.000) to CR 582 (Mile Post 00.240) – to be posted 25 M.P.H.;

(CR 930201), Country Bend East, a Local Residential Roadway, located in S-02, T-29S, R-23E; from Country Bend South (Mile Post 00.000) to Dead End North (Mile Post 00.230) – to be posted 25 M.P.H.;

(CR 930202), Village Road, a Local Residential Roadway, located in S-02, T-29S, R-23E; from Country Bend East (Mile Post 00.000) to South Pipkin Road (Mile Post 00.060) – to be posted 20 M.P.H.;

(CR 930327), Country Circle, a Local Residential Roadway, located in S-03, T-29S, R-23E; from Country Loop North (Mile Post 00.000) to Dead End (Mile Post 00.050) – to be posted 20 M.P.H.;

(CR 930323), Country Loop West, a Local Residential Roadway, located in S-03, T-29S, R-23E; from Country Loop South (Mile Post 00.000) to Dead End North (Mile Post 00.130) – to be posted 25 M.P.H.;

(CR 930333), Country Road, a Local Residential Roadway, located in S-03, T-29S, R-23E; from Country Loop North (Mile Post 00.000) to SR 572 (Mile Post 00.070) – to be posted 25 M.P.H.;

(CR 930324), Country Loop North, a Local Residential Roadway, located in S-03, T-29S, R-23E; from Country Loop West (Mile Post 00.000) to Country Bend East (Mile Post 00.280) – to be posted 25 M.P.H.;

**Board of County Commissioners
Resolution Setting Speed Limit
October 15, 2003
Page 10**

(CR 930322), Country Loop South, a Local Residential Roadway, located in S-03, T-29S, R-23E; from Country Loop West (Mile Post 00.000) to Country Loop East (Mile Post 00.180) – to be posted 25 M.P.H.;

(CR 732447), Daughtery Downs Loop, a Local Residential Roadway, located in S-24, T-27S, R-23E; from West Daughtery Road (Mile Post 00.000) to West Daughtery Road (Mile Post 00.350) – to be posted 20 M.P.H.;

(CR 832314), Dorothy Street, a Local Residential Roadway, located in S-23, T-28S, R-23E; from Plateau Avenue (Mile Post 00.000) to Dead End East (Mile Post 00.240) – to be posted 25 M.P.H.;

(CR 931229), Essex Avenue, a Local Residential Roadway, located in S-12, T-29S, R-23E; from Dead End South (Mile Post 00.000) to West Alamo Drive (Mile Post 00.520) – to be posted 25 M.P.H.;

(CR 730206), Hall Road, a Local Residential Roadway, located in S-02, T-27S, R-23E; from US 98 (Mile Post 00.000) to Dead End East (Mile Post 00.680) – to be posted 25 M.P.H.;

(CR 731710), Hammock View, a Local Residential Roadway, located in S-17, T-27S, R-23E; from Dead End West (Mile Post 00.000) to Forest Way (Mile Post 00.190) – to be posted 25 M.P.H.;

(CR 731709), Havenwood Oak, a Local Residential Roadway, located in S-17, T-27S, R-23E; from Rolling Oak (Mile Post 00.000) to Dead End North (Mile Post 00.170) – to be posted 25 M.P.H.;

(CR 832310), Greenwood Street West, a Local Residential Roadway, located in S-23, T-28S, R-23E; from Southern Avenue (Mile Post 00.000) to Dead End East (Mile Post 00.130) – to be posted 25 M.P.H.;

(CR 832225), Nokomis Avenue South, a Local Residential Roadway, located in S-22, T-28S, R-23E; from West Belmar Street (Mile Post 00.000) to Clyde Street (Mile Post 00.100) – to be posted 25 M.P.H.;

(CR 731713), Oak Haven, a Local Residential Roadway, located in S-17, T-27S, R-23E; from Rolling Oak (Mile Post 00.000) to Dead End North (Mile Post 00.150) – to be posted 25 M.P.H.;

Board of County Commissioners
Resolution Setting Speed Limit
October 15, 2003
Page 11

(CR 731707), Oak Terrace Drive, a Local Residential Roadway, located in S-17, T-27S, R-23E; from Rolling Oak Drive (Mile Post 00.000) to Meadowview (Mile Post 00.250) – to be posted 25 M.P.H.;

(CR 932912), Ramblewood North, a Local Residential Roadway, located in S-29, T-29S, R-23E; from Ramblewood West (Mile Post 00.000) to Ramblewood East (Mile Post 00.180) – to be posted 25 M.P.H.;

(CR 941504), Royal Court North, a Local Residential Roadway, located in S-15, T-29S, R-24E; from Royal Court S/N (Mile Post 00.000) to Yarborough Lane (Mile Post 00.060) – to be posted 20 M.P.H.;

(CR 832301), Suwannee Avenue, a Local Residential Roadway, located in S-23, T-28S, R-23E; from West Patterson Street (Mile Post 00.000) to West Highland Street (Mile Post 00.120) – to be posted 25 M.P.H.;

(CR 832203), Lebanon Road, a Local Residential Roadway, located in S-22, T-28S, R-23E; from West Highland Street (Mile Post 00.000) to Tennessee Road (Mile Post 00.660) – to be posted 25 M.P.H.;

(CR 730204), West Dees Road, a Local Residential Roadway, located in S-02, T-27S, R-23E; from West Dees Road (Mile Post 00.000) to North Dees Road *Bracy Lane (Mile Post 00.660) – to be posted 25 M.P.H.;

(CR 730105), North Dees Road, a Local Residential Roadway, located in S-01, T-27, R-23 from West Dees Road (Mile Post 00.000) to Dead End North (Mile Post 00.180) – to be posted 25 M.P.H.;

(CR 730104), Mattie Drive, a Local Residential Roadway, located in S-01, T-27S, R-23E; from North Dees Road (Mile Post 00.000) to Dead End (Mile Post 00.180) – to be posted 20 M.P.H.;

(CR 952701), Taylor Court, a Local Residential Roadway, located in S-27, T-29S, R-25E; from Dead End South (Mile Post 00.000) to Morris Drive (Mile Post 00.003) – to be posted 20 M.P.H.;

(CR 952713), Mays Court, a Local Residential Roadway, located in S-27, T-29S, R-25E; from Simpson Drive (Mile Post 00.000) to Dead End North (Mile Post 00.020) – to be posted 20 M.P.H.;

Board of County Commissioners
Resolution Setting Speed Limit
October 15, 2003
Page 12

(CR 952711), ^{STOWE} Stone Place, a Local Residential Roadway, located in S-27, T-29S, R-25E; from Simpson Drive (Mile Post 00.000) to Dead End North (Mile Post 00.020) – to be posted 20 M.P.H.;

(CR 952710), Tiger Circle, a Local Residential Roadway, located in S-27, T-29S, R-25E; from Simpson Drive (Mile Post 00.000) to Dead End North (Mile Post 00.060) – to be posted 20 M.P.H.;

(CR 852103), Autumn Wood Drive, a Local Residential Roadway, located in S-21, T-28S, R-25E; from Summer Hollow Drive (Mile Post 00.000) to Winter Ridge Drive (Mile Post 00.090) – to be posted 25 M.P.H.;

(CR 852130), Pinewood Drive, a Local Residential Roadway, located in S-21, T-28S, R-25E; from Spring Way Drive (Mile Post 00.000) to Lake Shore Parkway (Mile Post 00.220) – to be posted 25 M.P.H.;

(CR 852134), Plum Avenue, a Local Residential Roadway, located in S-21, T-28S, R-25E; from Thompson Street (Mile Post 00.000) to Stanton Street (Mile Post 00.140) – to be posted 25 M.P.H.;

(CR 852117), Thompson Street, a Local Residential Roadway, located in S-21, T-28S, R-25E; from King Avenue (Mile Post 00.000) to Plum Avenue (Mile Post 00.200) – to be posted 25 M.P.H.;

(CR 852119), Tiny Terrace, a Local Residential Roadway, located in S-21, T-28S, R-25E; from Thompson Street (Mile Post 00.000) to Plum Avenue (Mile Post 00.090) – to be posted 25 M.P.H.;

(CR 852109), Spring Way Drive, a Local Residential Roadway, located in S-21, T-28S, R-25E; from Summer Hollow Drive (Mile Post 00.000) to Winter Ridge Road (Mile Post 00.080) – to be posted 25 M.P.H.;

(CR 852114), Fowler Avenue, a Local Residential Roadway, located in S-215, T-28S, R-25E; from Edmond Circle West (Mile Post 00.000) to Nelson Street (Mile Post 00.150) – to be posted 25 M.P.H.;

(CR 852116), Sun Rise Terrace, a Local Residential Roadway, located in S-21, T-28S, R-25E; from Nelson Street (Mile Post 00.000) to Dead End East (Mile Post 00.070) – to be posted 25 M.P.H.;

OCT 15 2003 VOLUME 167

Board of County Commissioners
Resolution Setting Speed Limit
October 15, 2003
Page 13

(CR 852107), Nelson Street, a Local Residential Roadway, located in S-21, T-28S, R-25E; from Fowler Avenue (Mile Post 00.000) to Summer Hollow Drive (Mile Post 00.220) – to be posted 25 M.P.H.;

(CR 852124), Summer Hollow Drive, a Local Residential Roadway, located in S-21, T-28S, R-25E; from Autumn Wood Drive (Mile Post 00.000) to Spring Way Drive (Mile Post 00.140) – to be posted 25 M.P.H.;

(CR 852122), Peach Avenue, a Local Residential Roadway, located in S-21, T-28S, R-25E; from Thompson Street (Mile Post 00.000) to Stanton Street (Mile Post 00.190) – to be posted 25 M.P.H.;

(CR 852126), Cherry Avenue, a Local Residential Roadway, located in S-21, T-28S, R-25E; from Thompson Street (Mile Post 00.000) to Stanton Street (Mile Post 00.130) – to be posted 25 M.P.H.;

(CR 852121), Garden Street, a Local Residential Roadway, located in S-21, T-28S, R-25E; from Cherry Avenue (Mile Post 00.000) to Plum Avenue (Mile Post 00.160) – to be posted 25 M.P.H.;

(CR 852132), Winter Ridge Drive, a Local Residential Roadway, located in S-21, T-28S, R-25E; from Autumn Wood Drive (Mile Post 00.000) to Spring Way Drive (Mile Post 00.230) – to be posted 25 M.P.H.;

(CR 832239), Highlands Street West, a Local Residential Roadway, located in S-22, T-28S, R-23E; from McIntosh Drive (Mile Post 00.000) to West Highlands Street (Mile Post 00.060) – to be posted 25 M.P.H.;

(CR 832235), MacLean Court, a Local Residential Roadway, located in S-22, T-28S, R-23E; from Dead End South (Mile Post 00.000) to McGregor Street (Mile Post 00.090) – to be posted 25 M.P.H.;

(CR 832211), Memphis Road, a Local Residential Roadway, located in S-22, T-28S, R-23E; from Trenton Road (Mile Post 00.000) to Nashville Road (Mile Post 00.100) – to be posted 25 M.P.H.;

(CR 832224), Sparta Road, a Local Residential Roadway, located in S-22, T-28S, R-23E; from Lebanon Road (Mile Post 00.000) to CR 542 (Mile Post 00.100) – to be posted 25 M.P.H.;

Board of County Commissioners
Resolution Setting Speed Limit
October 15, 2003
Page 14

(CR 832220), Gallatin Road, a Local Residential Roadway, located in S-22, T-28S, R-23E; from Lebanon Road (Mile Post 00.000) to West Highlands Street (Mile Post 00.100) – to be posted 25 M.P.H.;

(CR 731708), Pleasant Way, a Local Residential Roadway, located in S-17, T-27S, R-23E; from Forest Way (Mile Post 00.000) to Dead End East (Mile Post 00.120) – to be posted 25 M.P.H.;

(CR 840923), Inwood Lane, a Local Residential Roadway, located in S-09, T-28S, R-24E; from Jungle Street (Mile Post 00.000) to Dead End North (Mile Post 00.060) – to be posted 20 M.P.H.;

(CR 841025), Canal Drive East, a Local Residential Roadway, located in S-10, T-28S, R-24E; from Hardin Combee Road (Mile Post 00.000) to Canal Drive North (Mile Post 00.120) – to be posted 25 M.P.H.;

(CR 770903), Carter Road, a Local Residential Roadway, located in S-09, T-27S, R-27E; from Patterson Road (Mile Post 00.000) to Dead End North (Mile Post 00.080) – to be posted 20 M.P.H.

STATE OF FLORIDA
COUNTY OF POLK

I, RICHARD M. WEISS, Clerk of the Board of County Commissioners of Polk County, Florida, hereby certify that the foregoing is a true and correct copy of Resolution _____ adopted by the said Board on the _____ day of _____, 2003.

WITNESS my hand and official seal of said Board this _____ day of _____, 2003.

(SEAL)

RICHARD M. WEISS, Clerk

By: _____
Deputy Clerk

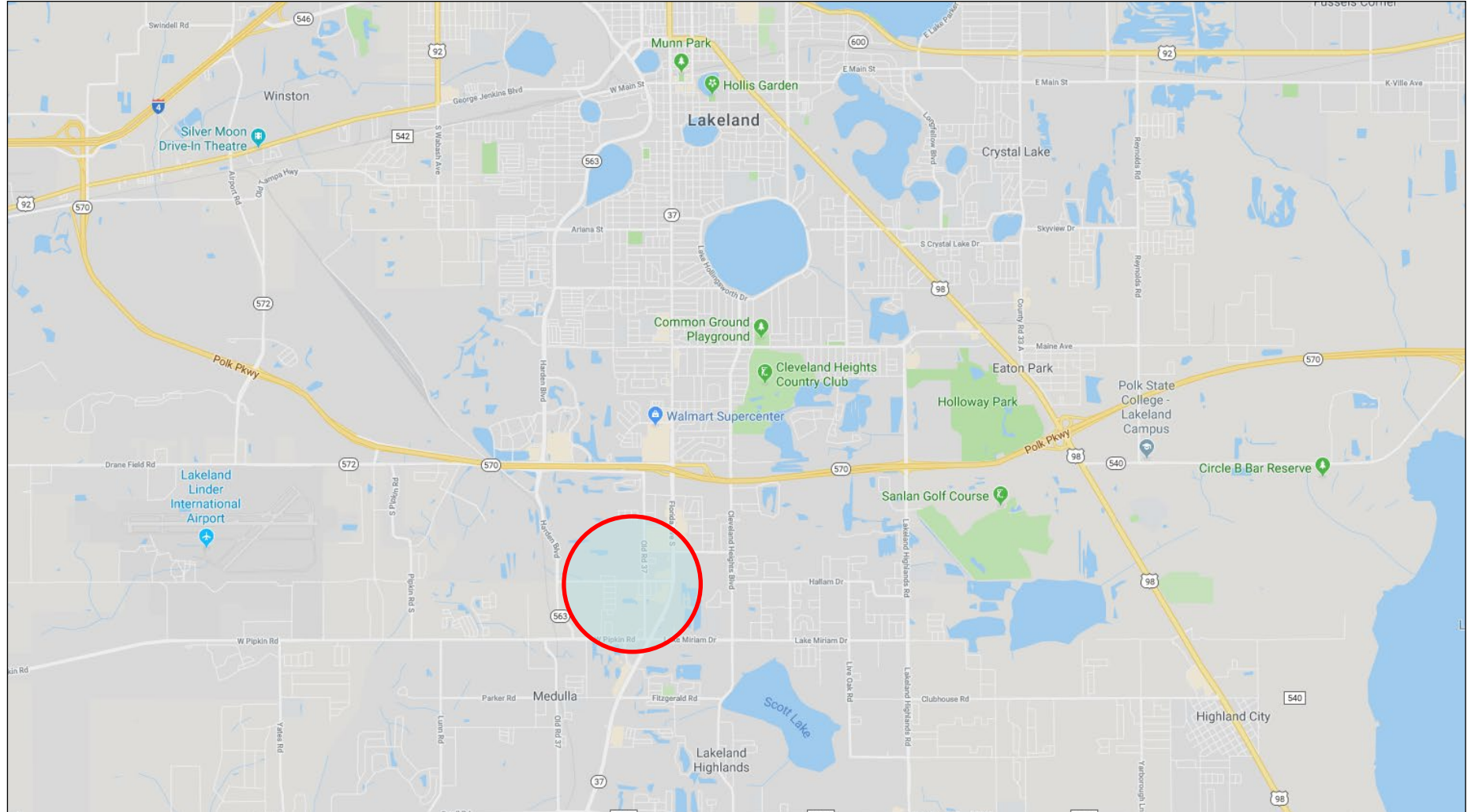
October 15, 2003



N.T.S.

Essex Ave S (Lakeland Area)

Request for Speed Limit Reduction





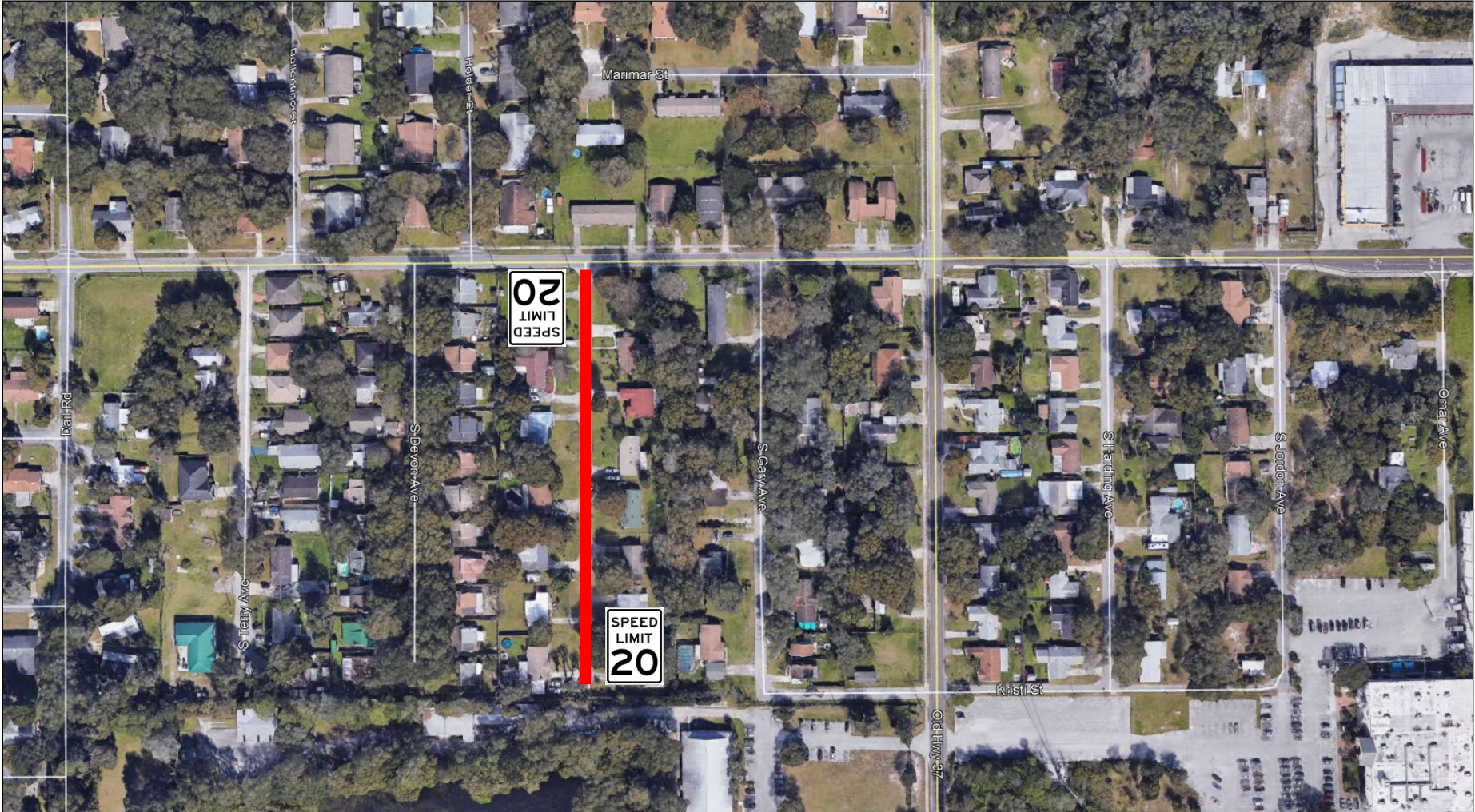
N.T.S.

Essex Ave S (Lakeland Area)

Request for Speed Limit Reduction



Approximate location of data collector





**ROADS & DRAINAGE DIVISION
SPEED STUDY**

ROAD DESCRIPTION

Road Name	Essex Ave S			Road Number	931229
Section	12	Township	29 S	Range	23 E
Commission District	1	Maintenance Unit	R1	Functional Classification	LR
From	Dead End South	Node	N/A	Mile Post	N/A
To	Alamo Dr W	Node	N/A	Mile Post	N/A

REASON FOR RESOLUTION

Customer Service Request #	36728	Internal Request		External Request	✓
New Posting		Speed Adjustment	✓		
External Agency Name (If Applicable)					

Problem Statement:
Upon investigation of a citizen request, it was determined that 20 MPH speed limits are appropriate for Essex Ave S.

TEST RUN SPEEDS

Test Run Speed #1 in M.P.H.	None	Comments:	None
Test Run Speed #2 in M.P.H.	None	Comments:	None
Test Run Speed #3 in M.P.H.	None	Comments:	None

ROADWAY ALIGNMENT

Number of Hills	0	Number of Curves	0	Number of Turns	0
Lane Width (ft)	10	Number of Lanes	2	Shoulder Width (ft)	0
Number of School Zones	0	Posted Speed of School Zones	None	Pavement Condition	Excellent
Number of Intersections	1	Sight Distance of Intersections	Adequate		
Number of Driveways	14	Sight Distance of Driveways	Adequate		
Number of Stop Signs	1	Number of Signals	0		

SPEED LIMIT INFORMATION

Current Speed Limit Posting (M.P.H.)	25				
Proposed Speed Limit Posting (M.P.H.)	20				
From	Dead End South				
To	Alamo Dr W				

Notes:
Speed data was collected at one location along the road. The 85th percentile speed was 19 mph. The proposed speed limit considers the 85th Percentile speed.

Review conducted by	Holly Finney & Casey Downing	Date	6/18/2024
Entered by	Steve Logan	Date	6/19/2024
Concurred/authorized by Traffic Manager	Amy J. Gregory, P.E.		
Signature		Date	06/20/24