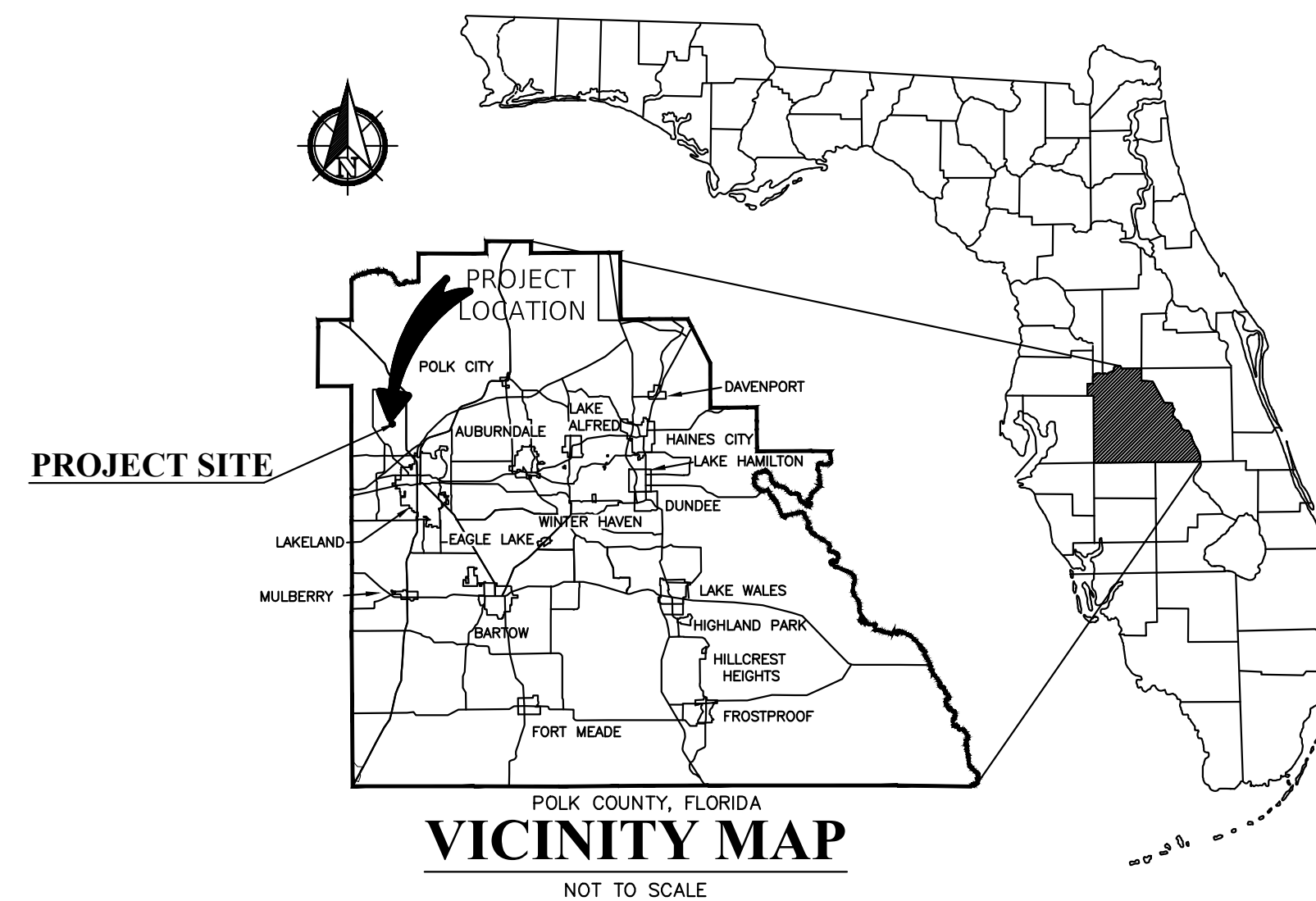


KEEN'S GROVE

A SUBDIVISION OF A PORTION OF THE SOUTHWEST 1/4 OF THE NORTHEAST 1/4 OF SECTION 04, TOWNSHIP 28 SOUTH, RANGE 23 EAST POLK COUNTY, FLORIDA

THIS IS A PRIVATE ROAD SUBDIVISION



LEGAL DESCRIPTION

THE W 1/2 OF THE E 1/2 OF THE SW 1/4 OF THE NE 1/4 OF SECTION 04, TOWNSHIP 28 SOUTH, RANGE 23 EAST, POLK COUNTY, FLORIDA. CONTAINING: 9.606 ACRES, MORE OR LESS.

ACKNOWLEDGMENT: CLAYTON PROPERTIES GROUP, INC.

STATE OF FLORIDA COUNTY OF POLK THE FOREGOING INSTRUMENT WAS ACKNOWLEDGED BEFORE ME BY MEANS OF [] PHYSICAL PRESENCE OR [] ONLINE NOTARIZATION, THIS DAY OF 2025, BY DAVID JOEL ADAMS, AS VICE PRESIDENT OF CLAYTON PROPERTIES GROUP, INC., A TENNESSEE CORPORATION, ON BEHALF OF THE CORPORATION, WHO IS PERSONALLY KNOWN TO ME OR HAS PRODUCED AS IDENTIFICATION.

NOTARY PUBLIC PRINTED NAME: MY COMMISSION EXPIRES:

CERTIFICATION:

STATE OF FLORIDA, COUNTY OF POLK I, STACY M. BUTTERFIELD, CLERK OF THE CIRCUIT COURT OF POLK COUNTY, FLORIDA, DO HEREBY CERTIFY THAT THIS PLAT HAS BEEN ACCEPTED FOR RECORDING THIS DAY OF 2025.

CLERK OF THE CIRCUIT COURT BY/S: DEPUTY CLERK

PREPARING SURVEYOR'S STATEMENT:

STATE OF FLORIDA, COUNTY OF POLK I HEREBY STATE THAT THIS PLAT OF "KEEN'S GROVE" WAS PREPARED UNDER MY DIRECTION AND SUPERVISION AND THAT THE PLAT COMPLIES WITH ALL THE SURVEY REQUIREMENTS OF CHAPTER 177, PART 1 FLORIDA STATUTES, AND THAT ALL PRM'S HAVE BEEN SET, AND ALL PCP'S AND OTHER MONUMENTATION WILL BE SET AS SHOWN OR NOTED.

ROBERT F. DUBOIS, PSM PROFESSIONAL SURVEYOR AND MAPPER REGISTRATION NO. 1552598 PENNONI ASSOCIATES INC. REGISTRATION NO. 8126 DATE

APPROVAL: REVIEWED FOR CONFORMITY:

STATE OF FLORIDA, COUNTY OF POLK

THIS PLAT HAS BEEN REVIEWED AND FOUND TO BE SUBSTANTIALLY IN COMPLIANCE WITH THE PROVISIONS OF CHAPTER 177, FLORIDA STATUTES, RELATING TO THE MAKING OF MAPS AND PLATS.

RICHARD M. BENTON, P.S.M #6447 DATE COUNTY SURVEYOR

APPROVAL: POLK COUNTY ENGINEER:

STATE OF FLORIDA, COUNTY OF POLK

THIS PLAT IS HEREBY APPROVED BY THE POLK COUNTY ENGINEER, THIS DAY OF A.D. 2025.

COUNTY ENGINEER

APPROVAL: LAND DEVELOPMENT DIVISION:

STATE OF FLORIDA, COUNTY OF POLK

THIS PLAT IS HEREBY APPROVED BY THE POLK COUNTY LAND DEVELOPMENT DIVISION, THIS DAY OF A.D. 2025.

LAND DEVELOPMENT DIVISION DIRECTOR

COUNTY COMMISSIONERS' CONDITIONAL APPROVAL:

STATE OF FLORIDA, COUNTY OF POLK

THIS PLAT IS CONDITIONALLY APPROVED THIS DAY OF A.D. 2025 IN AN OPEN MEETING OF THE BOARD OF COUNTY COMMISSIONERS OF POLK COUNTY, FLORIDA. THIS PLAT WILL NOT RECEIVE FINAL APPROVAL, NOR CAN IT BE RECORDED UNTIL ALL CONDITIONS HAVE BEEN SATISFIED.

BOARD OF COUNTY COMMISSIONERS

BY: CHAIRPERSON ATTEST: CLERK

COUNTY COMMISSIONERS' APPROVAL:

STATE OF FLORIDA, COUNTY OF POLK

THIS PLAT HAS RECEIVED FINAL APPROVAL THIS DAY OF A.D. 2025 BY THE CHAIRPERSON OF THE BOARD OF COUNTY COMMISSIONERS OF POLK COUNTY, FLORIDA IN ACCORDANCE WITH THE PROCEDURE ADOPTED BY THE BOARD OF COUNTY COMMISSIONERS.

BOARD OF COUNTY COMMISSIONERS

BY: CHAIRPERSON ATTEST: CLERK

DEDICATION:

STATE OF FLORIDA, COUNTY OF POLK

KNOW ALL MEN BY THESE PRESENTS THAT CLAYTON PROPERTIES GROUP, INC., A TENNESSEE CORPORATION, d/b/a HIGHLAND HOMES, OWNERS AND SUBDIVIDERS OF THE LANDS SHOWN HEREON HAS CAUSED THIS PLAT OF "KEEN'S GROVE" TO BE MADE AND HEREBY MAKES THE FOLLOWING DEDICATIONS:

- 1. OWNER HEREBY DEDICATES TO POLK COUNTY, FLORIDA, ITS SUCCESSORS AND/OR ASSIGNS, THE ADDITIONAL RIGHT-OF-WAY FOR KNIGHTS STATION ROAD (COUNTY ROAD 582) AS DEPICTED HEREON FOR USE BY THE PUBLIC;
2. OWNER HEREBY DEDICATES TO THE KEEN'S GROVE HOMEOWNERS ASSOCIATION, INC., A FLORIDA NOT-FOR-PROFIT CORPORATION, ITS SUCCESSORS AND/OR ASSIGNS, FOREVER THE INTERNAL STREET, ROAD AND RIGHT-OF-WAY OF KEEN'S GROVE WAY, INCLUDING THE STORM WATER COLLECTION SYSTEMS AS DEPICTED HEREON. THE KEEN'S GROVE HOMEOWNERS ASSOCIATION, INC., A FLORIDA NOT-FOR-PROFIT CORPORATION, ITS SUCCESSORS AND/OR ASSIGNS SHALL HEREBY BE RESPONSIBLE FOR MAINTAINING THE INTERNAL STREET, ROAD AND RIGHT-OF-WAY OF KEEN'S GROVE WAY, INCLUDING THE STORM WATER COLLECTION SYSTEMS AS DEPICTED HEREON;
3. OWNER HEREBY DEDICATES TO THE KEEN'S GROVE HOMEOWNERS ASSOCIATION, INC., A FLORIDA NOT-FOR-PROFIT CORPORATION, ITS SUCCESSORS AND/OR ASSIGNS, FOREVER TRACTS A AND B, AND THE PRIVATE DRAINAGE AND ACCESS FOR MAINTENANCE EASEMENTS AS DEPICTED HEREON FOR THE PURPOSES INDICATED, AND FOR PERPETUAL OWNERSHIP AND MAINTENANCE;
4. OWNER HEREBY DEDICATES TO THE PROVIDERS OF PUBLIC UTILITIES, INCLUDING BUT NOT LIMITED TO THE CITY OF LAKELAND, FLORIDA, ITS SUCCESSORS AND/OR ASSIGNS, FOREVER THE PUBLIC UTILITY EASEMENTS, ALONG WITH A PUBLIC UTILITY EASEMENT OVER, UNDER AND ACROSS THE INTERNAL STREET, ROAD AND RIGHT-OF-WAY OF KEEN'S GROVE WAY, AS DEPICTED HEREON FOR THE PURPOSE OF INSTALLATION, OPERATION, REPAIR AND MAINTENANCE OF THE UTILITIES INSTALLED THEREIN, TOGETHER WITH A PERPETUAL NON-EXCLUSIVE INGRESS AND EGRESS EASEMENT OVER THE INTERNAL STREET, ROAD AND RIGHT-OF-WAY OF KEEN'S GROVE WAY, AS DEPICTED HEREON FOR THE PURPOSE OF ACCESSING SAID PUBLIC UTILITY EASEMENTS, SUCH USE OF THE PUBLIC UTILITY EASEMENTS BY ANY ONE UTILITY PROVIDER SHALL NOT INTERFERE WITH ANY EXISTING PUBLIC UTILITIES INSTALLED THEREIN;
5. OWNER HEREBY DEDICATES FOREVER TO THE LOT OWNERS, THEIR SUCCESSORS AND/OR ASSIGNS, GUESTS AND INVITEES, A PERPETUAL NON-EXCLUSIVE INGRESS AND EGRESS EASEMENT OVER THE INTERNAL STREET, ROAD AND RIGHT-OF-WAY OF KEEN'S GROVE WAY, AS DEPICTED HEREON;
6. OWNER HEREBY DEDICATES TO POLK COUNTY, FLORIDA, ITS SUCCESSORS AND/OR ASSIGNS AN EASEMENT OVER, UNDER, AND ACROSS TRACTS A & B, AND THE PRIVATE DRAINAGE AND ACCESS FOR MAINTENANCE EASEMENTS DEPICTED HEREON FOR EMERGENCY MAINTENANCE AND REPAIRS TO THE STORM WATER MANAGEMENT FACILITIES AS MAY BE NECESSARY TO PROTECT PUBLIC IMPROVEMENTS, TOGETHER WITH THE RIGHT, BUT NOT THE OBLIGATION, TO PERFORM EMERGENCY MAINTENANCE AND REPAIRS TO THE STORM WATER MANAGEMENT FACILITIES THEREIN;
7. AND OWNER HEREBY DEDICATES A PERPETUAL EASEMENT FOR INGRESS AND EGRESS ACROSS THE INTERNAL STREET, ROAD AND RIGHT-OF-WAY OF KEEN'S GROVE WAY, AS DEPICTED HEREON, TO POLK COUNTY, FLORIDA, ITS SUCCESSORS AND/OR ASSIGNS, AND TO THE OTHER APPLICABLE AUTHORITIES FOR THE BENEFIT OF DELIVERY AND PICK UP SERVICES, FIRE PROTECTION, EMERGENCY MEDICAL AND LAW ENFORCEMENT SERVICES, AND OTHER AUTHORITIES OF LAW, SOLID WASTE COLLECTION, ELECTRIC, GAS AND CABLE TELEVISION SERVICES, AND INCLUDING BUT NOT LIMITED TO THE UNITED STATES POSTAL SERVICE MAIL CARRIERS.

WITNESS PRINTED NAME:

CLAYTON PROPERTIES GROUP, INC., A TENNESSEE CORPORATION, d/b/a HIGHLAND HOMES

WITNESS PRINTED NAME:

BY: PRINTED NAME: DAVID JOEL ADAMS PRINTED TITLE: VICE PRESIDENT

LEGEND:

- PCP (PERMANENT CONTROL POINT) SET PK NAIL & DISK "PCP LB-8126" - UNLESS OTHERWISE NOTED
FPK= FOUND FK NAIL & DISK "PCP LB-8126"
PRM (PERMANENT REFERENCE MONUMENT) SET 4" X 4" CONCRETE MONUMENT AND CAP "PRM LB-8126"
FCM= FOUND 4" X 4" CONCRETE MONUMENT AND CAP "PRM LB-8126" - UNLESS NOTED OTHERWISE
AND
MORE OR LESS / PLUS OR MINUS
FLOOD ZONE
BK = BOOK
BLDG = BUILDING
BM = BENCHMARK
CL = CURVE LABEL (SEE CURVE TABLES)
(CALC) = INFORMATION CALCULATED FROM FIELD MEASUREMENTS
CB = CHORD BEARING
CL = CHORD LENGTH
CONC. = CONCRETE
& = CENTERLINE
D/A = CENTRAL ANGLE (DELTA)
(D) = INFORMATION PER LEGAL DESCRIPTION
EA = EACH
ELEV = ELEVATION
(F) = INFORMATION AS MEASURED BETWEEN FIELD MONUMENTATION
FEMA = FEDERAL EMERGENCY MANAGEMENT AGENCY
FOUN = FOUND
I.D. = IDENTIFICATION
IR = IRON ROD
L = ARC LENGTH
L1 = LINE LABEL (SEE LINE TABLES)
LB = LICENSED BUSINESS
N&D = NAIL AND DISK
NO./# = NUMBER
(NR) = NON-RADIAL
OR = OFFICIAL RECORDS
(P) = PLATTED INFORMATION
PB = PLAT BOOK
PG = PAGE
PGS = PAGES
PK = PARKER KALON NAIL
PSM = PROFESSIONAL SURVEYOR & MAPPER
(RAD) = RADIAL
R/W = RIGHT-OF-WAY
R = RADIUS
SSE = SANITARY SEWER EASEMENT
T = TANGENT LENGTH
UE = UTILITY EASEMENT

SURVEYOR'S NOTES:

- 1. BEARINGS BASED ON THE STATE OF FLORIDA STATE PLANE COORDINATE SYSTEM, NORTH AMERICAN DATUM OF 1983 (NAD 83), ADJUSTMENT 1990, WEST ZONE, THE SOUTH LINE OF THE NORTHEAST 1/4 OF SECTION 04, TOWNSHIP 28 SOUTH, RANGE 23 EAST, POLK COUNTY, FLORIDA, BEING NORTH 89°51'03" EAST.
2. UNLESS OTHERWISE NOTED A 5/8" IRON ROD AND CAP "PENNONI LB-8126" MONUMENTATION SET AT ALL LOT CORNERS, POINTS OF INTERSECTION, AND CHANGES OF DIRECTION OF LINE WITHIN THE SUBDIVISION WHICH DO NOT REQUIRE A PRM OR PCP.
3. THIS PLAT IS BASED ON A RECENT SURVEY MADE BY PENNONI ASSOCIATES, INC. IN COMPLIANCE WITH CHAPTER 177, FLORIDA STATUTES.
4. PCP'S SET IN AN IMPERVIOUS SURFACE ARE A PK-NAIL AND DISC "PENNONI LB-8126" - UNLESS OTHERWISE NOTED.
5. LANDS IN THE VICINITY OF THE DRAINAGE/RETENTION AREAS AND SWALES MAY BE SUBJECT TO TEMPORARY STANDING WATER WHEN CONDITIONS DECREASE THE RATE OF PERCOLATION AND DRAINAGE RUNOFF.
6. PROPERTY OWNERS ARE RESPONSIBLE FOR MAINTENANCE OF VEGETATION (MOWING) IN THE RETENTION AREAS AND DRAINAGE SWALES LYING WITHIN THEIR RESPECTIVE LOT AND THE DESIGN IS TO BE LEFT UNCHANGED.
7. THE PLATTED LANDS ARE LOCATED WITHIN ZONE "X", AS SHOWN ON THE FLOOD INSURANCE RATE MAP NO. 12105C0284G COMMUNITY PANEL NUMBER 120261 0284 G, EFFECTIVE DECEMBER 22, 2016, IN POLK COUNTY, FLORIDA, AS PREPARED BY THE FEDERAL EMERGENCY MANAGEMENT AGENCY.
8. HORIZONTAL COORDINATES ARE IN U.S. SURVEY FEET, AND ARE BASED ON THE FLORIDA STATE PLANE COORDINATE SYSTEM, WEST ZONE 0902, NORTH AMERICAN DATUM OF 1983, ADJUSTMENT 2011 (NAD 83/11).
9. ELEVATIONS BASED ON NORTH AMERICAN VERTICAL DATUM OF 1988 (NAVD88).
10. ALL PLATTED UTILITY EASEMENTS SHALL ALSO BE EASEMENTS FOR THE CONSTRUCTION, INSTALLATION, MAINTENANCE, AND OPERATION OF CABLE TELEVISION SERVICES IN ACCORDANCE WITH FLORIDA STATUTE 177.091 (28).
11. ALL LOT LINES ARE RADIAL (RAD) UNLESS OTHER WISE NOTED AS NON-RADIAL (NR).

SURVEYOR'S REPORT:

THIS PLAT WAS PREPARED WITH THE BENEFIT OF THAT CERTAIN PROPERTY INFORMATION REPORT PREPARED BY FIRST AMERICAN TITLE INSURANCE COMPANY, FATC FILE NO.: 110568969, REPORT DATED THROUGH DECEMBER 09, 2024, WHICH WAS RELIED UPON AS BEING COMPLETE AND CORRECT, ACCORDING TO SAID PROPERTY INFORMATION REPORT.

D. "UNSATISFIED MORTGAGES OR LIENS ENCUMBERING SAID PROPERTY ARE AS FOLLOWS:"

- NONE

PER SAID PROPERTY INFORMATION REPORT: E. "UNDERLYING RIGHTS-OF-WAY, EASEMENTS OR PLATS AFFECTING SAID PROPERTY ARE AS FOLLOWS:"

- NONE

PER SAID PROPERTY INFORMATION REPORT: F. "OTHER INFORMATION REGARDING SAID PROPERTY INCLUDES:"

- RECORDED NOTICE OF ENVIRONMENTAL RESOURCE PERMIT RECORDED IN BOOK 12839, PAGE 2100.

TRACT USAGE TABLE

TRACTS A AND B ARE OPEN SPACE, DRAINAGE AND RECREATION AREAS, TO BE OWNED AND MAINTAINED BY THE KEEN'S GROVE HOMEOWNERS ASSOCIATION, INC., A FLORIDA NOT-FOR-PROFIT CORPORATION.

NOTICE:

THIS PLAT, AS RECORDED IN ITS GRAPHIC FORM, IS THE OFFICIAL DEPICTION OF THE SUBDIVIDED LANDS DESCRIBED HEREIN AND WILL IN NO CIRCUMSTANCES BE SUPPLANTED IN AUTHORITY BY ANY OTHER GRAPHIC OR DIGITAL FORM OF THE PLAT.

THERE MAY BE ADDITIONAL RESTRICTIONS THAT ARE NOT RECORDED ON THIS PLAT THAT MAY BE FOUND IN THE PUBLIC RECORDS OF THIS COUNTY.

FLOOD HAZARD WARNING:

THIS PROPERTY MAY BE SUBJECT TO FLOODING. YOU SHOULD CONTACT POLK COUNTY AND OBTAIN THE LATEST INFORMATION ON FLOOD ELEVATIONS AND RESTRICTIONS BEFORE MAKING PLANS FOR THE USE OF THIS PROPERTY. EVEN MEETING POLK COUNTY STANDARDS DOES NOT ENSURE THAT ANY IMPROVEMENTS SUCH AS STRUCTURES, DRIVEWAYS, YARDS, SANITARY SEWER SYSTEMS AND WATER WELL SYSTEMS WILL NOT BE FLOODED IN CERTAIN RAIN EVENTS.

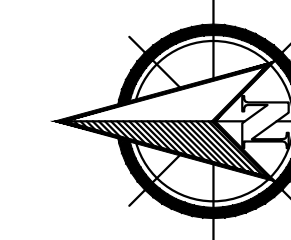


PENNONI ASSOCIATES INC. 401 Third Street SW Winter Haven, FL 33880 T 863.324.1112 F 863.294.6185 LB 8126

KEEN'S GROVE

A SUBDIVISION OF A PORTION OF THE SOUTHWEST 1/4 OF THE NORTHEAST 1/4 OF SECTION 04, TOWNSHIP 28 SOUTH, RANGE 23 EAST
POLK COUNTY, FLORIDA

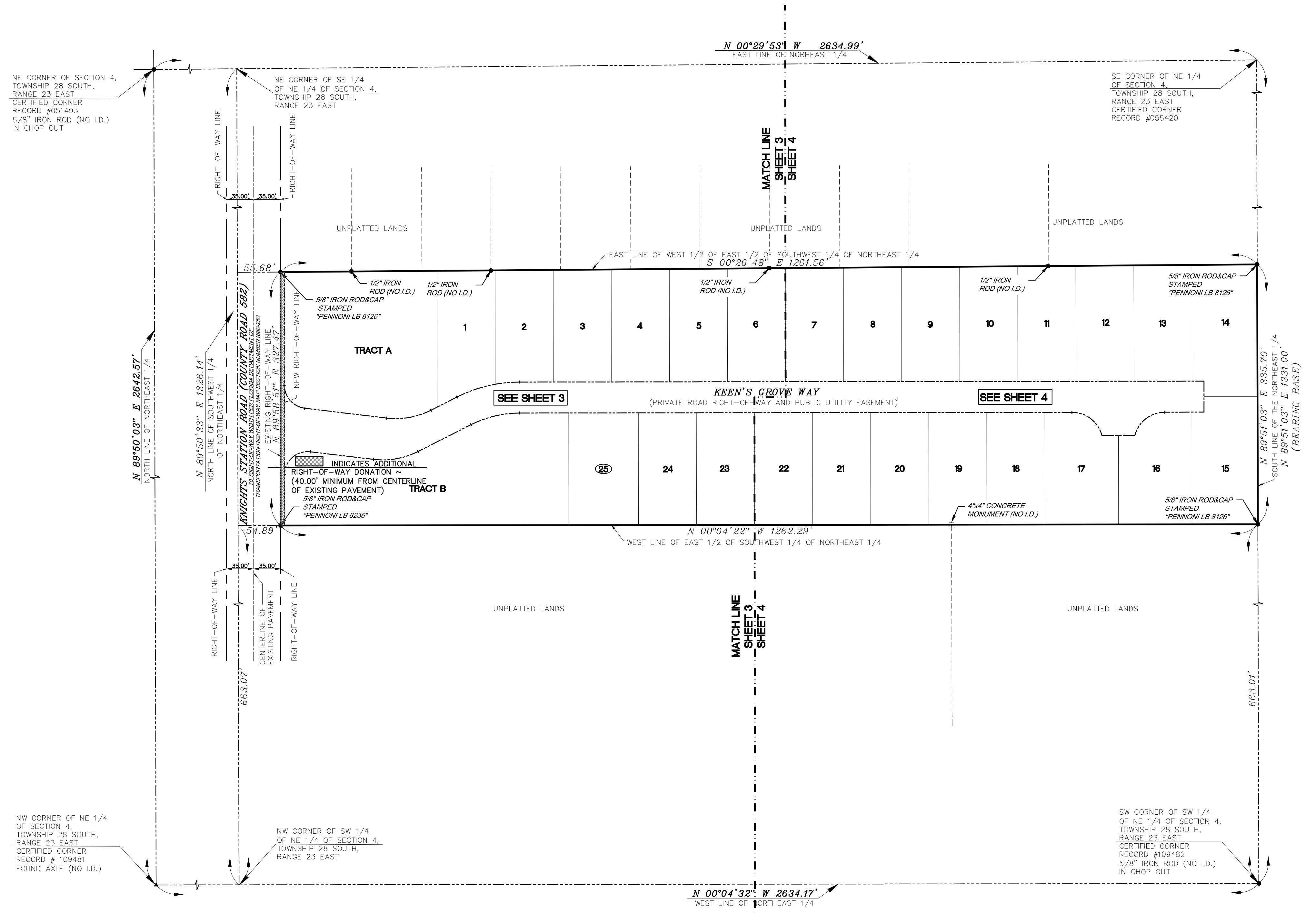
THIS IS A PRIVATE ROAD SUBDIVISION



Scale: 1" = 80'

LEGEND:

- ⊙ = PCP (PERMANENT CONTROL POINT)
- ⊙ SET PK NAIL & DISK "PCP LB-8126" - UNLESS OTHERWISE NOTED
- ⊙ FPK = FOUND PK NAIL & DISK "PCP LB-8126"
- = PRM (PERMANENT REFERENCE MONUMENT)
- SET 4" X 4" CONCRETE MONUMENT AND CAP "PRM LB-8126"
- FCM = FOUND 4" X 4" CONCRETE MONUMENT AND CAP "PRM LB-8126" - UNLESS NOTED OTHERWISE
- & = AND
- ± = MORE OR LESS / PLUS OR MINUS
- ▭ = FLOOD ZONE
- BK = BOOK
- BLDG = BUILDING
- BM = BENCHMARK
- CT = CURVE LABEL (SEE CURVE TABLES)
- (CALC) = INFORMATION CALCULATED FROM FIELD MEASUREMENTS
- CB = CHORD BEARING
- CL = CHORD LENGTH
- CONC. = CONCRETE
- ℄ = CENTERLINE
- D/A = CENTRAL ANGLE (DELTA)
- (D) = INFORMATION PER LEGAL DESCRIPTION
- EA = EACH
- ELEV = ELEVATION
- (F) = INFORMATION AS MEASURED BETWEEN FIELD MONUMENTATION
- FEMA = FEDERAL EMERGENCY MANAGEMENT AGENCY
- FOU = FOUND
- I.D. = IDENTIFICATION
- IR = IRON ROD
- L = ARC LENGTH
- L1 = LINE LABEL (SEE LINE TABLES)
- LB = LICENSED BUSINESS
- N&D = NAIL AND DISK
- NO./# = NUMBER
- (NR) = NON-RADIAL
- OR = OFFICIAL RECORDS
- (P) = PLATTED INFORMATION
- PB = PLAT BOOK
- PG = PAGE
- PGS = PAGES
- PK = PARKER KALON NAIL
- PB = POINT OF BEGINNING
- POC = POINT OF COMMENCEMENT
- PSM = PROFESSIONAL SURVEYOR & MAPPER
- (RAD) = RADIAL
- R/W = RIGHT-OF-WAY
- R = RADIUS
- SSE = SANITARY SEWER EASEMENT
- T = TANGENT LENGTH
- UE = UTILITY EASEMENT



TRACT USAGE TABLE
TRACTS A AND B ARE OPEN SPACE, DRAINAGE AND RECREATION AREAS, TO BE OWNED AND MAINTAINED BY THE KEEN'S GROVE HOMEOWNERS ASSOCIATION, INC. A FLORIDA NOT-FOR-PROFIT CORPORATION.

NOTICE:
THIS PLAT, AS RECORDED IN ITS GRAPHIC FORM, IS THE OFFICIAL DEPICTION OF THE SUBDIVIDED LANDS DESCRIBED HEREIN AND WILL IN NO CIRCUMSTANCES BE SUPPLANTED IN AUTHORITY BY ANY OTHER GRAPHIC OR DIGITAL FORM OF THE PLAT.
THERE MAY BE ADDITIONAL RESTRICTIONS THAT ARE NOT RECORDED ON THIS PLAT THAT MAY BE FOUND IN THE PUBLIC RECORDS OF THIS COUNTY.

FLOOD HAZARD WARNING:
THIS PROPERTY MAY BE SUBJECT TO FLOODING. YOU SHOULD CONTACT POLK COUNTY AND OBTAIN THE LATEST INFORMATION ON FLOOD ELEVATIONS AND RESTRICTIONS BEFORE MAKING PLANS FOR THE USE OF THIS PROPERTY. EVEN MEETING POLK COUNTY STANDARDS DOES NOT ENSURE THAT ANY IMPROVEMENTS SUCH AS STRUCTURES, DRIVEWAYS, YARDS, SANITARY SEWER SYSTEMS AND WATER WELL SYSTEMS WILL NOT BE FLOODED IN CERTAIN RAIN EVENTS.

KEY MAP AND OVERALL BOUNDARY INFORMATION
(SCALE: 1"=80')

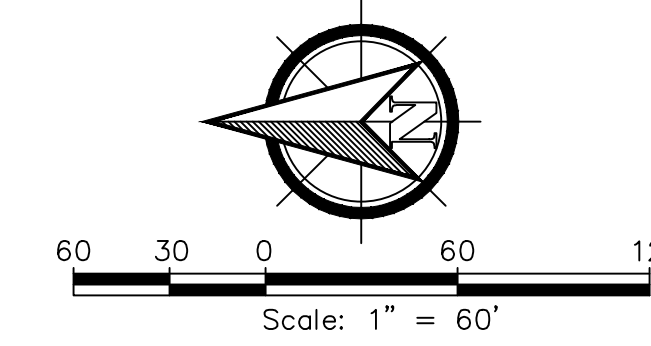
Pennoni
PENNONI ASSOCIATES INC.
401 Third Street SW
Winter Haven, FL 33880
T 863.324.1112 F 863.294.6185
LB 8126

Z:\Drawing Files\KEEN'S GROVE\WORKING DWG\PLAT\PLAT-SHTS 1-2.dwg, 12/16/2024 2:34 PM, Steve Paterson

KEEN'S GROVE

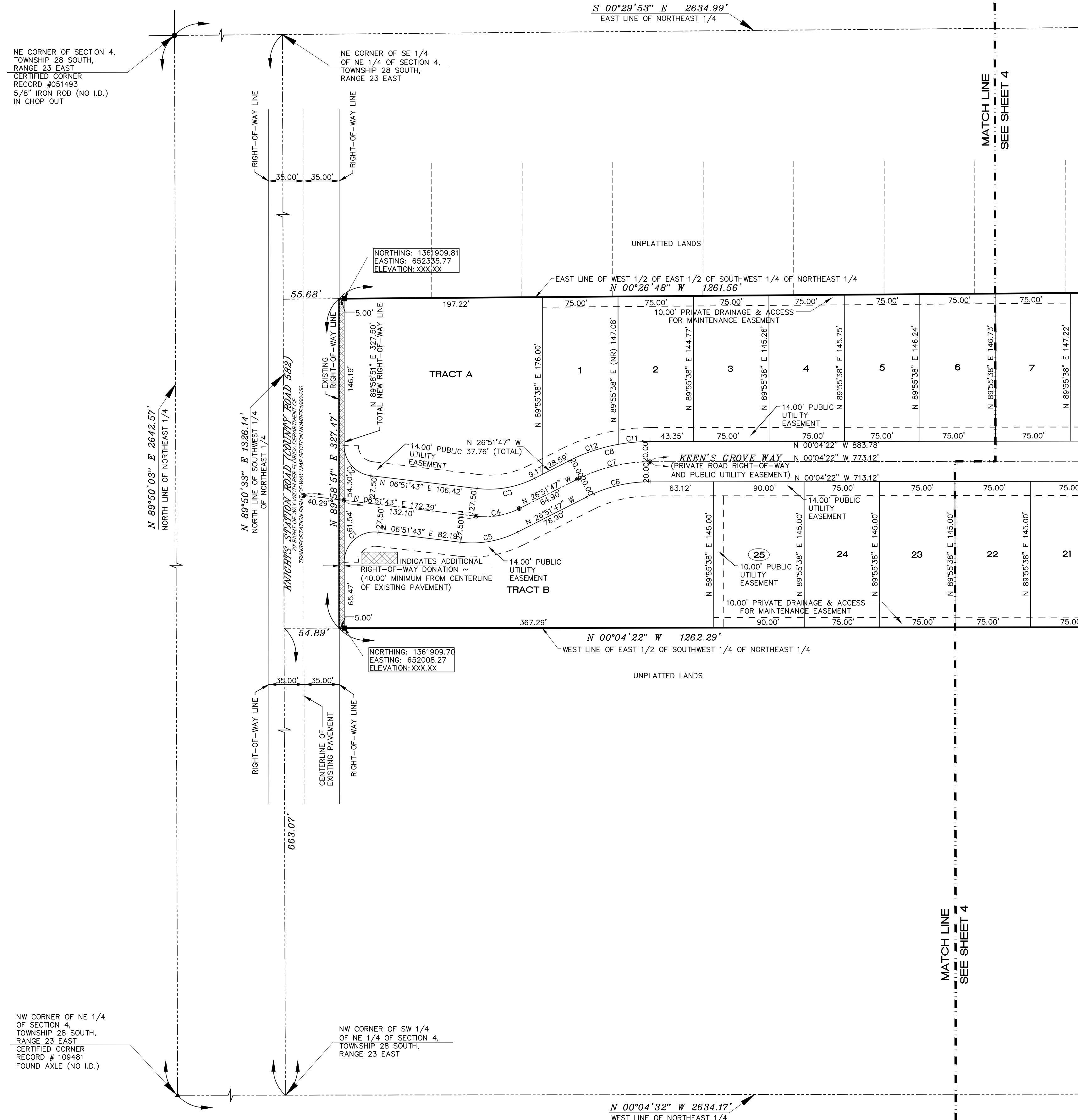
A SUBDIVISION OF A PORTION OF THE SOUTHWEST 1/4 OF THE NORTHEAST 1/4 OF SECTION 04, TOWNSHIP 28 SOUTH, RANGE 23 EAST
POLK COUNTY, FLORIDA

THIS IS A PRIVATE ROAD SUBDIVISION



Curve Table					
Curve #	Length	Radius	Delta	Chord Length	Chord Bearing
C1	50.73'	30.00'	96° 52' 52"	44.90'	N41° 34' 43"W
C2	43.52'	30.00'	83° 07' 08"	39.80'	N48° 25' 17"E
C3	58.86'	100.00'	33° 43' 30"	58.02'	N10° 00' 02"W
C4	44.15'	75.00'	33° 43' 30"	43.51'	N10° 00' 02"W
C5	58.86'	100.00'	33° 43' 30"	58.02'	N10° 00' 02"W
C6	65.46'	140.00'	26° 47' 25"	64.87'	N13° 28' 05"W
C7	74.81'	160.00'	26° 47' 25"	74.13'	N13° 28' 05"W
C8	84.16'	180.00'	26° 47' 25"	83.40'	N13° 28' 05"W
C9	52.72'	40.00'	75° 31' 22"	48.99'	N37° 41' 18"E
C10	52.72'	40.00'	75° 31' 22"	48.99'	N37° 50' 02"W
C11	31.82'	180.00'	10° 07' 41"	31.78'	N05° 08' 13"W
C12	52.35'	180.00'	16° 39' 44"	52.16'	N18° 31' 55"W

- LEGEND:**
- ⊙ = PCP (PERMANENT CONTROL POINT)
 - ⊙ FPK = SET PK NAIL & DISK "PCP LB-8126" - UNLESS OTHERWISE NOTED
 - ⊙ FPK = FOUND PK NAIL & DISK "PCP LB-8126"
 - = PRM (PERMANENT REFERENCE MONUMENT)
 - SET 4" X 4" CONCRETE MONUMENT AND CAP "PRM LB-8126"
 - FCM = FOUND 4" X 4" CONCRETE MONUMENT AND CAP "PRM LB-8126" - UNLESS NOTED OTHERWISE
 - & = AND
 - ± = MORE OR LESS / PLUS OR MINUS
 - ☐ = FLOOD ZONE
 - BK = BOOK
 - BLDG = BUILDING
 - BM = BENCHMARK
 - CT = CURVE LABEL (SEE CURVE TABLES)
 - (CALC.) = INFORMATION CALCULATED FROM FIELD MEASUREMENTS
 - CB = CHORD BEARING
 - CL = CHORD LENGTH
 - CONC. = CONCRETE
 - ⊕ = CENTERLINE
 - D/A = CENTRAL ANGLE (DELTA)
 - (D) = INFORMATION PER LEGAL DESCRIPTION
 - EA = EACH
 - ELEV = ELEVATION
 - (F) = INFORMATION AS MEASURED BETWEEN FIELD MONUMENTATION
 - FEMA = FEDERAL EMERGENCY MANAGEMENT AGENCY
 - FO = FOUND
 - I.D. = IDENTIFICATION
 - IR = IRON ROD
 - L = ARC LENGTH
 - L1 = LINE LABEL (SEE LINE TABLES)
 - LB = LICENSED BUSINESS
 - N&D = NAIL AND DISK
 - NO./# = NUMBER
 - (NR) = NON-RADIAL
 - OR = OFFICIAL RECORDS
 - (P) = PLATTED INFORMATION
 - PB = PLAT BOOK
 - PG = PAGE
 - PGS = PAGES
 - PK = PARKER KALON NAIL
 - POB = POINT OF BEGINNING
 - POC = POINT OF COMMENCEMENT
 - PSM = PROFESSIONAL SURVEYOR & MAPPER
 - (RAD) = RADIAL
 - R/W = RIGHT-OF-WAY
 - R = RADIUS
 - SSE = SANITARY SEWER EASEMENT
 - T = TANGENT LENGTH
 - UE = UTILITY EASEMENT



TRACT USAGE TABLE

TRACTS A AND B ARE OPEN SPACE, DRAINAGE AND RECREATION AREAS, TO BE OWNED AND MAINTAINED BY THE KEEN'S GROVE HOMEOWNERS ASSOCIATION, INC., A FLORIDA NOT-FOR-PROFIT CORPORATION.

NOTICE:

THIS PLAT, AS RECORDED IN ITS GRAPHIC FORM, IS THE OFFICIAL DEPICTION OF THE SUBDIVIDED LANDS DESCRIBED HEREIN AND WILL IN NO CIRCUMSTANCES BE SUPPLANTED IN AUTHORITY BY ANY OTHER GRAPHIC OR DIGITAL FORM OF THE PLAT.

THERE MAY BE ADDITIONAL RESTRICTIONS THAT ARE NOT RECORDED ON THIS PLAT THAT MAY BE FOUND IN THE PUBLIC RECORDS OF THIS COUNTY.

FLOOD HAZARD WARNING:

THIS PROPERTY MAY BE SUBJECT TO FLOODING. YOU SHOULD CONTACT POLK COUNTY AND OBTAIN THE LATEST INFORMATION ON FLOOD ELEVATIONS AND RESTRICTIONS BEFORE MAKING PLANS FOR THE USE OF THIS PROPERTY. EVEN MEETING POLK COUNTY STANDARDS DOES NOT ENSURE THAT ANY IMPROVEMENTS SUCH AS STRUCTURES, DRIVEWAYS, YARDS, SANITARY SEWER SYSTEMS AND WATER WELL SYSTEMS WILL NOT BE FLOODED IN CERTAIN RAIN EVENTS.

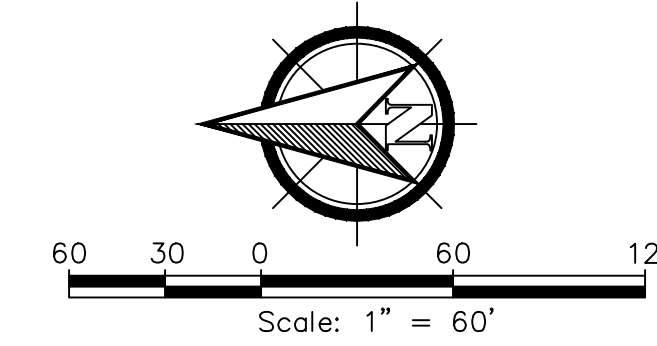
PENNONI ASSOCIATES INC.
401 Third Street SW
Winter Haven, FL 33880
T 863.324.1112 F 863.294.6185
LB 8126

Z:\Drawing Files\KEENS GROVE\WORKING DWG\PLAT\PLAT-SHTS 3-4.dwg, 12/16/2024, 2:35 PM, Steve Paterson

KEEN'S GROVE

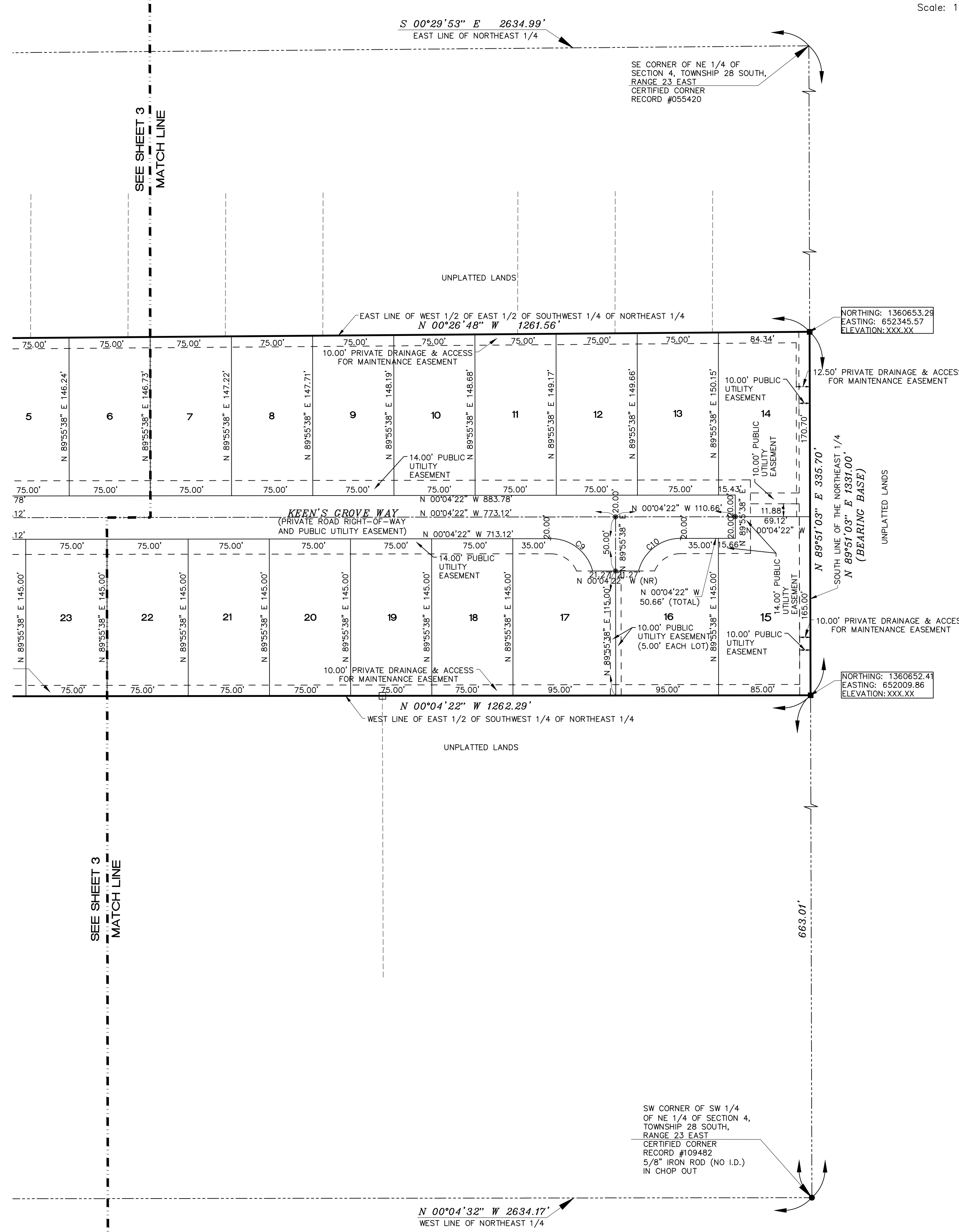
A SUBDIVISION OF A PORTION OF THE SOUTHWEST 1/4 OF THE NORTHEAST 1/4 OF SECTION 04, TOWNSHIP 28 SOUTH, RANGE 23 EAST
POLK COUNTY, FLORIDA

THIS IS A PRIVATE ROAD SUBDIVISION



Curve Table					
Curve #	Length	Radius	Delta	Chord Length	Chord Bearing
C1	50.73'	30.00'	96° 52' 52"	44.90'	N41° 34' 43"W
C2	43.52'	30.00'	83° 07' 08"	39.80'	N48° 25' 17"E
C3	58.86'	100.00'	33° 43' 30"	58.02'	N10° 00' 02"W
C4	44.15'	75.00'	33° 43' 30"	43.51'	N10° 00' 02"W
C5	58.86'	100.00'	33° 43' 30"	58.02'	N10° 00' 02"W
C6	65.46'	140.00'	26° 47' 25"	64.87'	N13° 28' 05"W
C7	74.81'	160.00'	26° 47' 25"	74.13'	N13° 28' 05"W
C8	84.16'	180.00'	26° 47' 25"	83.40'	N13° 28' 05"W
C9	52.72'	40.00'	75° 31' 22"	48.99'	N37° 41' 18"E
C10	52.72'	40.00'	75° 31' 22"	48.99'	N37° 50' 02"W
C11	31.82'	180.00'	10° 07' 41"	31.78'	N05° 08' 13"W
C12	52.35'	180.00'	16° 39' 44"	52.16'	N18° 31' 55"W

- LEGEND:**
- ⊙ = PCP (PERMANENT CONTROL POINT)
 - ⊙ SET PK NAIL & DISK "PCP LB-8126" - UNLESS OTHERWISE NOTED
 - ⊙ FPK = FOUND PK NAIL & DISK "PCP LB-8126"
 - = PRM (PERMANENT REFERENCE MONUMENT)
 - SET 4" X 4" CONCRETE MONUMENT AND CAP "PRM LB-8126"
 - FCM = FOUND 4" X 4" CONCRETE MONUMENT AND CAP "PRM LB-8126" - UNLESS NOTED OTHERWISE
 - & = AND
 - ± = MORE OR LESS / PLUS OR MINUS
 - = FLOOD ZONE
 - BK = BOOK
 - BLDG = BUILDING
 - BM = BENCHMARK
 - CT = CURVE LABEL (SEE CURVE TABLES)
 - (CALC) = INFORMATION CALCULATED FROM FIELD MEASUREMENTS
 - CB = CHORD BEARING
 - CL = CHORD LENGTH
 - CONC. = CONCRETE
 - ⊕ = CENTERLINE
 - D/A = CENTRAL ANGLE (DELTA)
 - (D) = INFORMATION PER LEGAL DESCRIPTION
 - EA = EACH
 - ELEV = ELEVATION
 - (F) = INFORMATION AS MEASURED BETWEEN FIELD MONUMENTATION
 - FEMA = FEDERAL EMERGENCY MANAGEMENT AGENCY
 - FOUND = FOUND
 - I.D. = IDENTIFICATION
 - IR = IRON ROD
 - L = ARC LENGTH
 - L1 = LINE LABEL (SEE LINE TABLES)
 - LB = LICENSED BUSINESS
 - N&D = NAIL AND DISK
 - NO./# = NUMBER
 - (NR) = NON-RADIAL
 - OR = OFFICIAL RECORDS
 - (P) = PLATTED INFORMATION
 - PB = PLAT BOOK
 - PG = PAGE
 - PGS = PAGES
 - PK = PARKER KALON NAIL
 - POB = POINT OF BEGINNING
 - POC = POINT OF COMMENCEMENT
 - PSM = PROFESSIONAL SURVEYOR & MAPPER
 - (RAD) = RADIAL
 - R/W = RIGHT-OF-WAY
 - R = RADIUS
 - SSE = SANITARY SEWER EASEMENT
 - T = TANGENT LENGTH
 - UE = UTILITY EASEMENT



TRACT USAGE TABLE

TRACTS A AND B ARE OPEN SPACE, DRAINAGE AND RECREATION AREAS, TO BE OWNED AND MAINTAINED BY THE KEEN'S GROVE HOMEOWNERS ASSOCIATION, INC., A FLORIDA NOT-FOR-PROFIT CORPORATION.

NOTICE:

THIS PLAT, AS RECORDED IN ITS GRAPHIC FORM, IS THE OFFICIAL DEPICTION OF THE SUBDIVIDED LANDS DESCRIBED HEREIN AND WILL IN NO CIRCUMSTANCES BE SUPPLANTED IN AUTHORITY BY ANY OTHER GRAPHIC OR DIGITAL FORM OF THE PLAT.

THERE MAY BE ADDITIONAL RESTRICTIONS THAT ARE NOT RECORDED ON THIS PLAT THAT MAY BE FOUND IN THE PUBLIC RECORDS OF THIS COUNTY.

FLOOD HAZARD WARNING:

THIS PROPERTY MAY BE SUBJECT TO FLOODING. YOU SHOULD CONTACT POLK COUNTY AND OBTAIN THE LATEST INFORMATION ON FLOOD ELEVATIONS AND RESTRICTIONS BEFORE MAKING PLANS FOR THE USE OF THIS PROPERTY. EVEN MEETING POLK COUNTY STANDARDS DOES NOT ENSURE THAT ANY IMPROVEMENTS SUCH AS STRUCTURES, DRIVEWAYS, YARDS, SANITARY SEWER SYSTEMS AND WATER WELL SYSTEMS WILL NOT BE FLOODED IN CERTAIN RAIN EVENTS.

Pennoni ASSOCIATES INC.
401 Third Street SW
Winter Haven, FL 33880
T 863.324.1112 F 863.294.6185
LB 8126

Z:\Drawing Files\KEENS GROVE\WORKING DWG\PLAT\PLAT-SHTS 3-4.dwg, 12/16/2024 2:36 PM, Steve Paterson