

RESOLUTION NO.: \_\_\_\_\_

**WHEREAS**, the Polk County Roads & Drainage Division, conducted parking studies on the following County-maintained Local Residential road:

Petes Lane (Road Number 671114); from County Road 547 (Lee Jackson Highway) to Dead End West, Located in S-11, T-26S, R-27E, and

**WHEREAS**, said studies were made in accordance with the procedures established by the State of Florida Department of Transportation, and said studies verified that the parking of vehicles in this location creates navigability concerns, and

**WHEREAS**, under the laws of the State of Florida, the Board of County Commissioners is vested with the authority to restrict parking on County maintained roads.

**NOW, THEREFORE, BE IT RESOLVED** that the Polk County Roads & Drainage Division is herewith directed to cause Petes Lane to be posted "No Parking, Stopping or Standing" on the east and west sides from County Road 547 (Lee Jackson Highway) to Granada Boulevard.

DATED this 3<sup>rd</sup> day of September 2024.

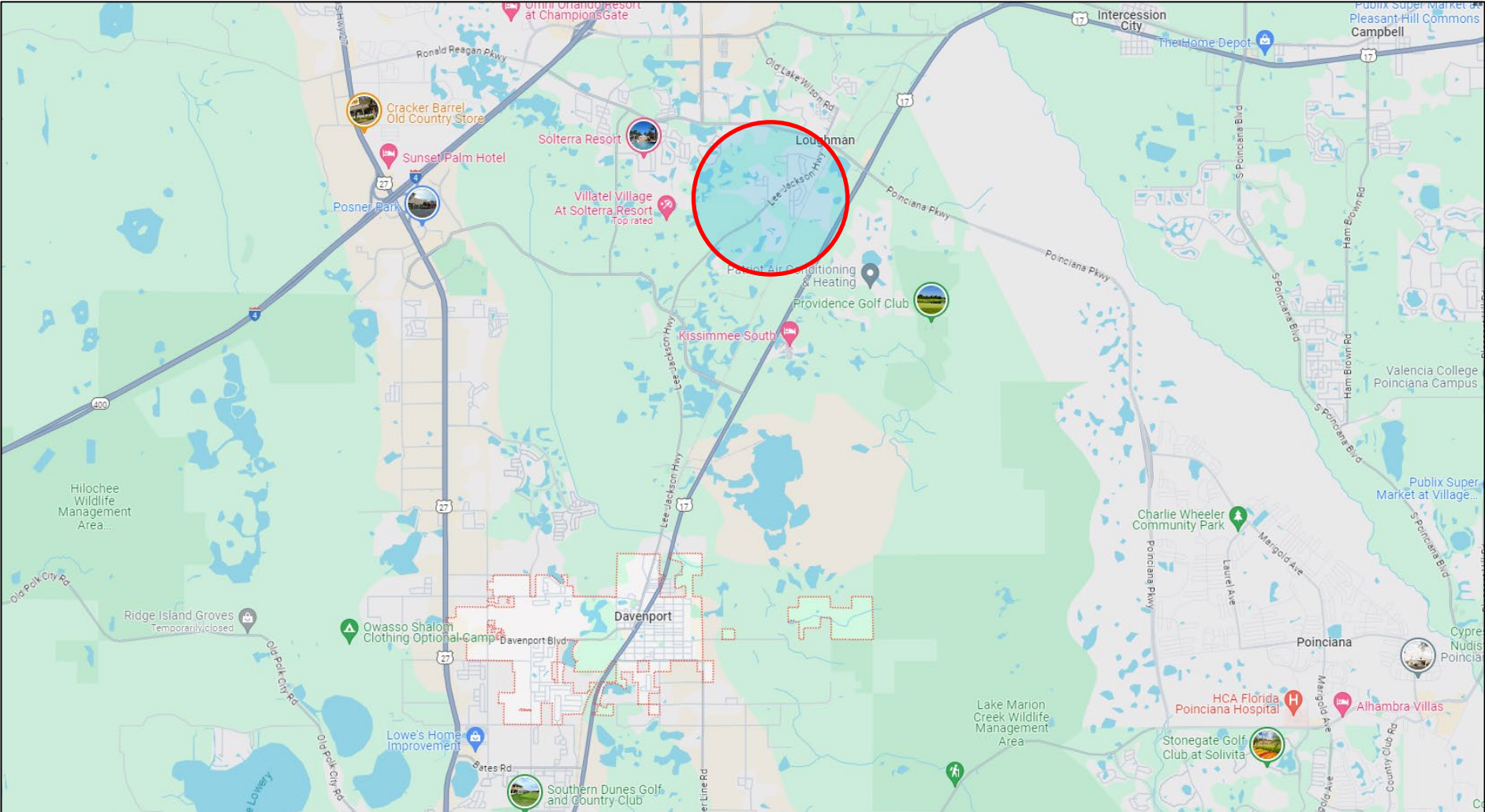


N.T.S.

# Petes Ln (Davenport Area)

Request for Parking Restrictions

Vicinity Map



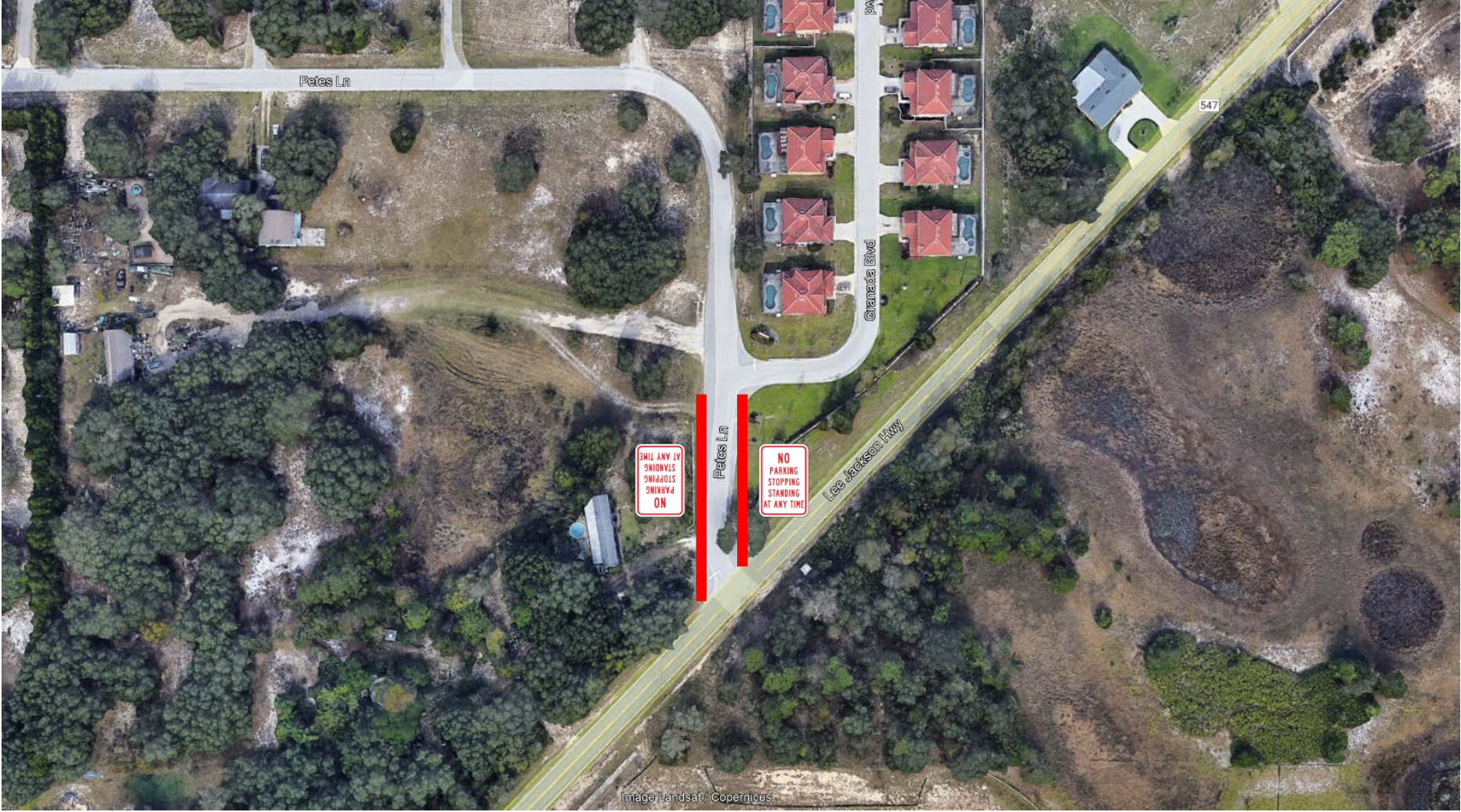
N



N.T.S.

# Petes Ln (Davenport Area)

Request for Parking Restrictions





**POLK COUNTY ROADS & DRAINAGE DIVISION  
NO PARKING, STOPPING OR STANDING REQUEST**

**ROAD DESCRIPTION**

<b>Name</b>	Petes Ln		<b>Number</b>	671114	
<b>Section</b>	11	<b>Township</b>	26 S	<b>Range</b>	27 E
<b>Commission District</b>	4	<b>Maintenance Unit</b>	R4	<b>Functional Classification</b>	LR
<b>From</b>	CR 547	<b>Node</b>	N/A	<b>Mile Post</b>	N/A
<b>To</b>	Dead End West	<b>Node</b>	N/A	<b>Mile Post</b>	N/A

**REASON FOR RESOLUTION**

<b>Customer Service Request #</b>	N/A	<b>Internal Request</b>	✓	<b>External Request</b>	
<b>External Agency Name (If Applicable)</b>					
<b>Problem Statement:</b> Roads & Drainage staff requests parking restriction due to navigability issues being caused by the parking of vehicles.					

**REQUEST FOR POSTING**

<b>No Parking</b>	✓	<b>No Stopping</b>	✓	<b>No Standing</b>	✓
<b>Direction of road</b>	North-South	<b>Findings:</b> Roads & Drainage has verified that the parking of vehicles in this area creates potential navigability concerns. Recommend signs be posted restricting parking on the east and west sides of the street from CR 547 (Lee Jackson Hwy) to Granada Blvd.			
<b>Which side of road</b>	East-West				
<b>Distance in feet</b>	219				

**PICTURES OF LOCATION**



<b>Review conducted by</b>	Steve Logan	<b>Date</b>	8/20/2024
<b>Entered by</b>	Steve Logan	<b>Date</b>	8/20/2024
<b>Concurred/authorized by Traffic Manager</b>	Amy J. Gregory, P.E.	<b>Date</b>	8/20/2024
<b>Signature</b>			