



Consultant Services Authorization

Firm	Jones Edmunds & Associates, Inc.
Master Agreement No.	2024-014
CSA No.	2024-014-03
Project Name	Sun Ray Wastewater Treatment Facility (WWTF) Advanced Wastewater Treatment (AWT) Upgrades and Improvements Evaluation
Project Description	Consultant will provide professional services including project management, conduct review meetings, evaluate alternatives, prepare final report, and provide regulatory coordination with Florida Department of Environmental Protection.
Projects Exhibits and Attachments	Exhibit "A"- Scope of Services Exhibit "B"-Fee Schedule (Master Agreement) Exhibit "C"-Reimbursable Cost Schedule (if applicable) Exhibit "D"-Insurance Documents
Duration (in days)	This authorization shall be in full force and effect until the Consultant completes all services as identified in Exhibit "A".
Compensation	\$ 127,234.00
Special Contract Conditions	NA
Insurance Requirements	Professional Liability
Liquidated Damages	\$ 0.00 Per Day
Budget Source/Availability	42011.680536150.5662020.6897998 (Utilities Miscellaneous Services)

IN WITNESS WHEREOF, the parties hereto have executed this CSA on this ____ day of _____, 20__.

Attest:
STACY M. BUTTERFIELD

POLK COUNTY, a Political subdivision
of the State of Florida

By: _____
Deputy Clerk

By: _____
Chairman
Board of County Commissioners

Date Approved by Board: _____

Review as to form and legal sufficiency


County Attorney's Office Date

Attest:


Brett A. Cunningham, PE ENV
Corporate Secretary

SEAL

Date: October 16, 2025



CONSULTANT COMPANY NAME

Authorized Corporate Officer

Stanley F. Ferreira, Jr. - PE President & CEO
[Printed Name and Title]

024510
95344-193-25

AHolmes 
ARH

JHannah 
JTH

Date: October 16, 2025

Exhibit A
Consultant Services Authorization
2024-014-03
Sun Ray WWTF AWT Upgrades and Improvements Evaluation

Jones Edmunds, (Consultant) entered into a Master Consulting Agreement (Agreement) with Polk County, Florida (County) on January 9, 2024. Pursuant to this Agreement, the County has requested that the Consultant provide certain professional services in support of Sun Ray Wastewater Treatment Facility (WWTF) Advanced Wastewater Treatment (AWT) Upgrades and Improvements (Project) as further detailed in this Consultant Services Authorization.

A. Project Background and Description

The County operates the Sun Ray WWTF at 915 Central Avenue Frostproof, Florida 33843. The facility is a Type I, two-stage, extended aeration domestic plant with a permitted capacity of 1.0 million gallons per day (MGD) annual average daily flow (AADF). After disinfection, effluent is sent for disposal to rapid infiltration basins (RIBs) on and off site. The WWTF recently went through a permit renewal process that included a Capacity Analysis Report (CAR), Operation and Maintenance Performance Report (O&MPR) with a condition assessment, and Reclaimed Water/Effluent Analysis Report.

Originally constructed in 1997, the plant underwent an upgrade in 2012 to accommodate increased loadings from the South County Jail, which remains the primary contributor to the facility's flow. The improvements enhanced the plant's infrastructure, including a new influent pump station, package ring plant, effluent pumps, RIB spray field, and supporting utilities. More recently, the County has initiated plans to relocate dewatering screw presses from the Northeast WWTF (NEWWTF) to this facility. The County-requested evaluation is needed to ensure long-term compliance with the Lake Okeechobee Basin Management Action Plan (BMAP) requirements and to identify cost-effective strategies for future upgrades and improvements.

The Sun Ray WWTF is regulated under the Lake Okeechobee Basin Management Action Plan (BMAP), which mandates stringent nutrient discharge limits—specifically, effluent concentrations less than 3.0 mg/L for Total Nitrogen and less than 1.0 mg/L for Total Phosphorus. The County is required to be in compliance by 2030. In addition to meeting these regulatory requirements, The County seeks to improve the facility's treatment efficiency and operational reliability.

The purpose of this project is to support the County in evaluating conceptual-level alternatives for upgrading the Sun Ray WWTF to meet Lake Okeechobee BMAP nutrient limits and to improve the facility's overall treatment performance and reliability. The Consultant will deliver a comprehensive report outlining feasible alternatives, associated planning-level costs, and implementation considerations. The Consultant will also support the County's engagement with the Florida Department of Environmental Protection (FDEP).

The primary objectives of this project are to:

- **Evaluate Compliance and Treatment Alternatives**
Conduct a conceptual-level assessment of treatment technologies to support the County's compliance with the Lake Okeechobee BMAP nutrient limits and develop three WWTF upgrade alternatives. The County's stated preference is to maximize the use of biological processes to achieve BMAP compliance.
- **Assess Treatment Efficiency and Reliability**
Identify opportunities to enhance the facility's operational performance and long-term reliability to achieve its current permitted capacity through process optimization and infrastructure improvements, including hydraulic improvements, flow equalization, primary treatment upgrades, and biosolids process and equipment.
- **Condition Assessment**
Review the main components of the facility and assess structural, electrical, or mechanical condition and include as a section in evaluation.
- **Develop Planning-Level Cost Estimates**
Provide comparative cost estimates for three alternatives to support budgeting and strategic planning.
- **Facilitate Stakeholder Engagement**
Conduct a workshop with the County staff, including Operations personnel, to review and discuss up to three alternatives of treatment options and recommended enhancements before finalizing the draft report, providing alignment with operational goals and stakeholder input.

- Support Regulatory Coordination with FDEP
Participate in a meeting with the FDEP to discuss BMAP compliance strategies and incorporate regulatory feedback into the evaluation.

The County has requested that the Consultant provide engineering services in support of the Project.

B. Scope of Services

Upon authorization to proceed from the County, the Consultant will provide the following identified services. The Consultant shall ensure that all design, bid, and construction documents produced by the Consultant or their subconsultants for the County will be consistent with the Polk County Utilities Standards and Specifications Manual, latest edition, and other County requirements. This authorization shall be in full force and effect until the Consultant completes all services as described in the Consultant Services Authorization and any subsequent modifications hereto.

Phase 100 – Project Management

Task 101 – Project Management

This task consists of overall management of the Project including contract administration, budget management, invoicing, monthly status reports, scheduling, and coordination with the County and Consultant's subconsultants.

Task 102 – Kick-off Meeting and Review Meetings

The Consultant will attend one kickoff meeting with the County. The Consultant will prepare a meeting agenda and meeting minutes. Meeting minutes shall be distributed within three working days of the date of the meeting.

In addition to the Kick-off meeting the Consultant will attend the following meetings with the County:

- Two site visits at the Sun Ray WWTF
- Draft Evaluation Report review
- Two meetings with the Florida Department of Environmental Protection (FDEP)

Phase 200 – Evaluation, Alternatives Workshop, and Report

Task 201 – Desktop Alternatives Evaluation

The Consultant will review the materials submitted with the most recent permit renewal application for the WWTF, as well as other available information related to the operation and maintenance of the WWTF. This review and information gathered during the WWTF site visit will be used to assess means to integrate reuse of existing infrastructure as part of plant upgrades. The Consultant will then conduct a desktop evaluation to determine applicable alternatives to achieve AWT and compliance with BMAP requirements and establish the three most viable alternatives.

Task 202 – Treatment Alternatives Workshop

As part of the Desktop Evaluation development, the Consultant will schedule and facilitate a workshop with the County staff to present and discuss the three conceptual-level treatment alternatives before finalizing the report. The workshop will serve as a collaborative forum to gather feedback, clarify technical and operational considerations, and provide alignment with the County's strategic and regulatory goals. The workshop will also discuss standardizing treatment technology goals based on other County plants. The ultimate goal of the workshop will be to finalize the three alternatives to complete the report.

Task 203 – Draft Evaluation Report

The Consultant will prepare a Draft Evaluation Report presenting three conceptual-level treatment alternatives for upgrading the Sun Ray WWTF to an AWT facility. This will include conceptual site layout figures for each alternative. Each alternative will be developed to achieve compliance with the effluent nutrient limits required under the Lake Okeechobee BMAP. The evaluation will prioritize reuse or repurpose of existing infrastructure where feasible. As requested by the County, one alternative will specifically incorporate the use of membrane bioreactor (MBR) technology to assess its applicability and cost-effectiveness for meeting treatment goals.

In addition to evaluating upgrades to AWT for BMAP compliance, the Draft Evaluation Report will assess treatment efficiency and reliability improvements. This assessment will consider potential enhancements such as hydraulic improvements, flow equalization, and upgrades to primary treatment process (influent piping and Headworks), improvements to the biosolids process and equipment.

The evaluation will also include a condition assessment of the facility to document its observable condition. The assessment will encompass:

- System descriptions
- Summary of observations
- Inventory of major components with evaluations of their civil, structural, mechanical, and electrical condition, including identified deficiencies and recommended actions
- Redundancy and backup systems
- Safety and accessibility concerns
- Assessment of process performance and operational reliability
- Selected field photographs with descriptive captions

As part of the condition assessment the Consultant will interview operational staff to get their input on operational and maintenance history of the facility and incorporate their input into the assessment, including operational challenges they face.

Each alternative for upgrades and improvements will be accompanied by planning-level cost estimates in accordance with Association for the Advancement of Cost Engineering (AACE) Level 5 (-50% to +100% accuracy) based on 2% or less design to support the County's decision-making and capital planning efforts.

To support this evaluation, the Consultant will collaborate with structural and electrical subconsultant engineers with whom they have an established working relationship. Together with the Consultant, these subconsultants will assess the existing conditions of the facility to determine the feasibility of using current infrastructure to accommodate the proposed upgrades and improvements. The evaluation will also identify any rehabilitation needs based on the findings of the condition assessment.

Task 204 – Draft Evaluation Report Review Meeting

The Consultant will facilitate a review meeting of the Draft Evaluation Report to discuss the draft and the County's comments. A comment and response form will be provided with the draft report to assist the County with collating the comments and document the Consultant's responses to each comment so that all feedback is properly addressed and incorporated into the Final Evaluation Report.

Task 205 – Final Report

After reviewing and incorporating County comments on the Draft Evaluation Report, the Consultant will prepare the Final Evaluation Report. This report will reflect feedback received during the Treatment Alternatives Workshop and the Draft Report Review Meeting and will include any revisions necessary to address County input.

Phase 300 – Regulatory Coordination with FDEP

The Consultant will support the County by coordinating and participating in two meetings with FDEP to discuss BMAP compliance strategies for the Sun Ray WWTF. The Consultant will work with the County to schedule the meeting during the development of the Draft Evaluation Report to allow timely incorporation of regulatory feedback.

Information gathered during the meeting will be integrated into the Draft and Final Evaluation Reports, including relevant permitting considerations. The Consultant will also develop a preliminary permitting strategy as part of the report based on FDEP input to assist the County in planning for future implementation of the selected alternative.

C. Deliverables

The Consultant shall prepare and submit to the County, including electronic format when applicable, the following deliverables:

Task	Activity	Deliverable
102	Meetings	Meeting agenda and minutes
202	Treatment Alternative Workshop	Agenda and Presentation Materials; one (1) electronic copy of each
203	Draft Evaluation Report	Draft Report; one (1) electronic copy of each
205	Final Evaluation Report	Draft Report; one (1) electronic copy of each

D. Schedule

Consultant will proceed with the services identified herein immediately upon receipt of an executed copy of this Consultant Services Authorization and a formal Notice-to-Proceed from

the County. The projected schedule for the performance of services described herein, in Gantt Chart format, is included as Attachment A-1. An updated electronic version of the Project schedule in Microsoft Project will be provided to the County within 10 working days from the issuance of the Notice-to-Proceed. Delivery of the schedule may be in other electronic formats so long as they accurately portray the approved scope of services with sufficient detail subject to staff approval. Should additional time be required beyond the schedule depicted in Attachment A-1, The Consultant will provide an updated Attachment A-1 (schedule) to the Utilities and Procurement Divisions. Following staff approval, the updated Attachment A-1 will be forwarded by Utilities staff to Procurement staff for inclusion in the contract file with no further administration action required for extension.

E. Compensation

This Consultant Services Authorization establishes a not-to-exceed cost of \$127,234.00. Compensation for the services performed under this Consultant Services Authorization shall be on an hourly, not-to-exceed basis using the current hourly rate schedule as set forth in Master Consulting Agreement 2024-014. Other direct costs or expenses incurred in connection with this Consultant Services Authorization will not be invoiced as these expenses have been accounted for in the rate multiplier associated with the Master Consulting Agreement referenced above. A summary of the estimated labor costs is provided in Attachment A-2 for reference only. Each invoice submittal shall include a tabular summary of the originally estimated labor costs by phase in accordance with Attachment A-2, fees invoiced to date, and the balance remaining per phase. The transfer of funds between defined phases is not permitted unless approved in advance in writing by the County Utilities Director. To request consideration for such a transfer, the Consultant must submit satisfactory written justification to transfer unused funds from phases with completed tasks or tasks clearly tracking under budget to phases with tasks requiring additional funding. In addition, the transfer of funds shall not exceed the total authorized fee for the Project.

The not-to-exceed cost for this Consultant Services Authorization includes contingency funds in the amount of \$15,000. The contingency funds authorized for use on this Consultant Services Authorization may only be expended upon written approval from the County's Utilities Director. Adequate justification must be provided by the Consultant for the release of contingency funds. Any out-of-scope services performed requiring the release of contingency funds will be

considered at-risk and may not be compensated until, or if, written approval is granted by the County's Utilities Director.

The Consultant will minimally provide a consultant invoice summary with each invoice, based on a mutually agreed-upon breakdown of phases and tasks in Attachment A-2 that reflect the effort and deliverables submitted to the County. The summary will depict the overall phases, associated budgets, amounts invoiced to date, and balance remaining. Invoices for compensation submitted by the Consultant will include the reviewed and approved consultant invoice summary, an updated Project schedule, notarized affidavits (as applicable), and the monthly status report.

Invoices for not-to-exceed projects shall be accompanied by time and task records for all billable hours appearing on the invoice. Additional documentation may be requested by the County and, if so requested, shall be furnished by the Consultant to the County Auditor's satisfaction. In addition, all invoices shall be submitted with the Consultant Services Authorization number, purchase order number, and the Polk County Utilities Project and Records Room numbers on the invoice.

The Consultant agrees that, in the event that design errors and / or omissions are discovered during construction, all services rendered by the Consultant to correct said design errors and / or omissions will be considered out-of-scope services and shall not be invoiced to the County.

F. County's Responsibilities

The County will provide the following information to the Consultant and / or perform the following services related to the Project:

- The County will provide available facility information in response to the Consultant's formal data request, including documentation not accessible through public sources such as the FDEP Oculus Document Management System.

G. Services Not Included

The following services are not included in the Scope of Services for the Project:

1. The Consultant will not perform field sampling or laboratory testing; all data used will be provided by the County.

2. Pilot testing or technology validation for proposed treatment alternatives, engineering preliminary and final design, permitting, or construction services are not included.
3. Environmental impact assessments or preparations documentation for environmental permitting services are not included.
4. Cost-benefit analyses or lifecycle cost modeling beyond planning-level estimates can be provided as an amendment to this Scope of Work.
5. Identifying or applying for funding sources, grants, or financial incentives services are not included.

H. Assumptions

The Scope of Services and compensation arrangement outlined in this Consultant Services Authorization are based on the following assumptions:

1. The Consultant will perform services up to the agreed fee limit. Any additional services or scope changes will require a formal amendment.
2. Deliverables will be provided in electronic format unless otherwise noted in this Scope of Work or requested by the County.
3. The County will provide access to existing facility for the Consultant's site visits and assessments.
4. All meetings with FDEP will be coordinated jointly with the County, and Consultant's role will be limited to technical support and documentation. Additional support and services can be provided as an amendment to this Scope of Work.

The remainder of this page is intentionally left blank.

ATTACHMENT A-1 - SCHEDULE

SUN RAY WWTF AWT UPGRADES AND IMPROVEMENTS EVALUATION

Polk County Utilities

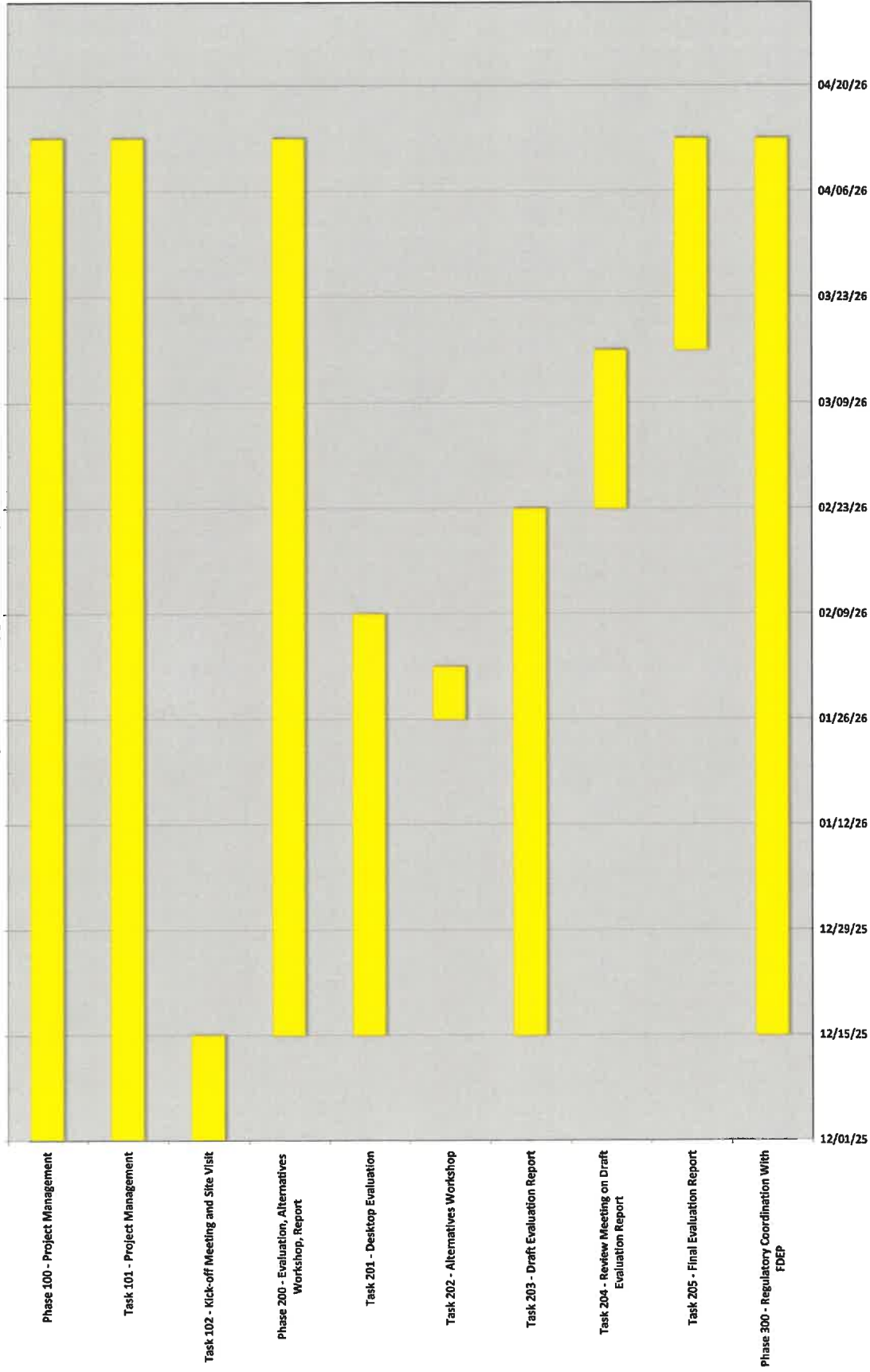
10/3/2025

Jones Edmunds Project No. 95344-294-25



	Start Date	End Date	Number of Days	ENTER MANUALLY - USE DAYS AS A MEANS TO REPRESENT % REMAINING AND COMPLETE	
				Completed	Remaining
Phase 100 - Project Management	12/01/25	04/13/26	133	0	133
Task 101 - Project Management	12/01/25	04/13/26	133	0	133
Task 102 - Kick-off Meeting and Site Visit	12/01/25	12/15/25	14	0	14
Phase 200 - Evaluation, Alternatives Workshop, Report	12/15/25	04/13/26	119	0	119
Task 201 - Desktop Evaluation	12/15/25	01/26/26	42	0	56
Task 202 - Alternatives Workshop	01/26/26	02/02/26	7	0	7
Task 203 - Draft Evaluation Report	12/15/25	02/23/26	70	0	70
Task 204 - Review Meeting on Draft Evaluation Report	02/23/26	03/16/26	21	0	21
Task 205 - Final Evaluation Report	03/16/26	04/13/26	28	0	28
Phase 300 - Regulatory Coordination With FDEP	12/15/25	04/13/26	119	0	119

Attachment A-1 Schedule
Sun Ray WWTF AWT Upgrades and Improvements Evaluation



ATTACHMENT A-2 - FEE ESTIMATE
Sun Ray WWTF AWT Upgrades and Improvements Evaluation
Polk County Utilities
10/9/2025
Jones Edmunds Project No. 95344-267-25



PHASE	Estimated 2024 Rates	HOURS						COSTS			TOTALS		
		Chief Engineer \$242	Senior Engineer \$223	Engineer Intern \$107	Senior GIS Technician \$137	GIS Technician \$94	Admin Assistant \$88	Labor Hours	Labor Fee	Subconsultants		Expenses	
Phase 100 - Project Management													
101 - Project Management		2	16				4	22	\$4,404	\$208	\$0	\$4,612	
102 - Kick-Off Meeting and Site Visit		8	12	16				36	\$6,324	\$5,180	\$0	\$11,504	
	Phase 100 Subtotal	10	28	16	0	0	4	58	\$10,728	\$5,388	\$0	\$16,116	
Phase 200 - Evaluation, Alternatives Workshop, and Report													
201 - Desktop Alternatives Evaluation		8	32	80	4	24		148	\$20,436	\$3,900	\$0	\$24,336	
202 - Treatment Alternatives Workshop		6	12	16			4	38	\$5,192	\$0	\$0	\$6,192	
203 - Draft Evaluation Report		8	65	110	4	16	8	211	\$30,957	\$8,320	\$0	\$39,277	
204 - Draft Evaluation Report Review Meeting		4	8	8				20	\$3,608	\$0	\$0	\$3,608	
205 - Final Evaluation Report		5	30	40	1	8	6	90	\$13,597	\$600	\$0	\$14,197	
	Phase 200 Subtotal	31	147	254	9	48	18	507	\$74,790	\$12,820	\$0	\$87,610	
Phase 300 - Regulatory Coordination with FDEP		12	16	12		8	0	48	\$8,508	\$0	\$0	\$8,508	
	Phase 300 Subtotal	12	16	12	0	8	0	48	\$8,508	\$0	\$0	\$8,508	
Project Total - Hours		53	191	282	9	56	22	613					
Project Total - Cost		\$12,826	\$42,593	\$30,174	\$1,233	\$5,264	\$1,936		\$94,026	\$18,208	\$0	\$112,234	
Contingency Allowance													
										TOTAL FEE	\$0	\$127,234	
												\$15,000	
												\$127,234	

Exhibit "B"

FEE SCHEDULE
Polk County RFP 23-448
Utility Design Services & Regulatory
Support Services

Classification	Range of Direct Labor Rates		Range of Hourly Billing Rates	
Project Officer	\$ 83	\$ 133	\$ 253	\$ 406
Senior Project Manager	\$ 50	\$ 103	\$ 153	\$ 314
Project Manager	\$ 51	\$ 107	\$ 156	\$ 326
Chief Engineer or Chief Scientist	\$ 66	\$ 101	\$ 201	\$ 308
Senior Engineer	\$ 55	\$ 99	\$ 168	\$ 302
Senior Scientist	\$ 44	\$ 71	\$ 134	\$ 217
Project Engineer	\$ 48	\$ 81	\$ 146	\$ 247
Project Scientist	\$ 35	\$ 53	\$ 107	\$ 162
Engineer Intern or Associate Scientist	\$ 27	\$ 49	\$ 82	\$ 149
Designer	\$ 18	\$ 67	\$ 55	\$ 204
Senior CADD Designer	\$ 32	\$ 53	\$ 98	\$ 162
CADD Designer	\$ 32	\$ 48	\$ 98	\$ 146
Senior CADD Technician	\$ 28	\$ 46	\$ 85	\$ 140
CADD Technician	\$ 26	\$ 41	\$ 79	\$ 125
Systems Analyst	\$ 54	\$ 77	\$ 165	\$ 235
Senior GIS Analyst or Senior GIS Programmer	\$ 31	\$ 60	\$ 95	\$ 183
GIS Analyst or Programmer	\$ 24	\$ 47	\$ 73	\$ 143
Senior GIS Technician	\$ 19	\$ 45	\$ 58	\$ 137
GIS Technician	\$ 18	\$ 41	\$ 55	\$ 125
Senior Database Administrator	\$ 30	\$ 77	\$ 92	\$ 235
Database Administrator	\$ 30	\$ 64	\$ 92	\$ 195
Environmental Data Analyst	\$ 22	\$ 36	\$ 67	\$ 110
Senior Field Technician Environmental	\$ 26	\$ 43	\$ 79	\$ 131
Field Technician Environmental	\$ 18	\$ 41	\$ 55	\$ 125
Senior Construction Administrator	\$ 40	\$ 73	\$ 122	\$ 223
Construction Administrator	\$ 39	\$ 58	\$ 119	\$ 177
Senior Field Representative Construction	\$ 31	\$ 52	\$ 95	\$ 159
Field Representative Construction	\$ 23	\$ 41	\$ 70	\$ 125
Construction Project Coordinator	\$ 17	\$ 37	\$ 52	\$ 113
Senior Administrative Assistant	\$ 20	\$ 70	\$ 61	\$ 214
Administrative Assistant	\$ 17	\$ 44	\$ 52	\$ 134
Senior Technical Editor	\$ 42	\$ 61	\$ 128	\$ 186

Net Effective Multiplier capped at 3.05.

LABOR MULTIPLIER CALCULATION
Polk County RFP 23-448
Utility Design Services & Regulatory Support
Services

Item	Multiplier
Direct Labor	1.00
Payroll Burden / Fringe Benefits*	0.45
Overhead / General Administrative*	1.55
Subtotal	3.00
Profit (5%)	0.15
Subtotal	3.15
Reimbursable Expenses	0.05
TOTAL CALCULATED MULTIPLIER	3.20
CONTRACT MULTIPLIER (MAXIMUM ALLOWED BY COUNTY)	3.05

* 2022 Jones Edmunds Audited Overhead Rate

Fran McAskill
Director
Procurement Division



330 West Church Street
P.O. Box 9005, Drawer AS05
Bartow, Florida 33831-9005
Phone: (863) 534-6757
Fax: (863) 534-6789
www.polk-county.net

EXHIBIT C

Board of County Commissioners

REIMBURSABLE COST SCHEDULE

- | | |
|--|--|
| 1. Subcontractor Services | Actual Costs |
| 2. Special Consultants | Actual costs |
| 3. Travel Expenses | In accordance with Chapter 112.061, F.S.;
and further defined in the Polk County Employee Handbook. |
| 4. Pre-approved Equipment
(includes purchase and rental of equipment used in project) | Actual Costs |



CERTIFICATE OF LIABILITY INSURANCE

DATE (MM/DD/YYYY)

10/16/2025

THIS CERTIFICATE IS ISSUED AS A MATTER OF INFORMATION ONLY AND CONFERS NO RIGHTS UPON THE CERTIFICATE HOLDER. THIS CERTIFICATE DOES NOT AFFIRMATIVELY OR NEGATIVELY AMEND, EXTEND OR ALTER THE COVERAGE AFFORDED BY THE POLICIES BELOW. THIS CERTIFICATE OF INSURANCE DOES NOT CONSTITUTE A CONTRACT BETWEEN THE ISSUING INSURER(S), AUTHORIZED REPRESENTATIVE OR PRODUCER, AND THE CERTIFICATE HOLDER.

IMPORTANT: If the certificate holder is an ADDITIONAL INSURED, the policy(ies) must have ADDITIONAL INSURED provisions or be endorsed. If SUBROGATION IS WAIVED, subject to the terms and conditions of the policy, certain policies may require an endorsement. A statement on this certificate does not confer rights to the certificate holder in lieu of such endorsement(s).

PRODUCER Risk Strategies 12801 North Central Expy. Suite 1725 Dallas, TX 75243	CONTACT NAME: Certificate Request Desk PHONE (A/C, No, Ext): (650) 762-0400 E-MAIL: certrequest@risk-strategies.com ADDRESS: INSURER(S) AFFORDING COVERAGE INSURER A : Travelers Specialty Insurance Company INSURER B : Travelers Property Casualty Co of Amer INSURER C : Charter Oak Fire Insurance Company INSURER D : XL Specialty Insurance Company INSURER E : INSURER F :	FAX (A/C, No): (650) 762-0490 NAIC # 10213 25674 25615 37885
--	--	--

COVERAGES **CERTIFICATE NUMBER:** 87672559 **REVISION NUMBER:**

THIS IS TO CERTIFY THAT THE POLICIES OF INSURANCE LISTED BELOW HAVE BEEN ISSUED TO THE INSURED NAMED ABOVE FOR THE POLICY PERIOD INDICATED. NOTWITHSTANDING ANY REQUIREMENT, TERM OR CONDITION OF ANY CONTRACT OR OTHER DOCUMENT WITH RESPECT TO WHICH THIS CERTIFICATE MAY BE ISSUED OR MAY PERTAIN, THE INSURANCE AFFORDED BY THE POLICIES DESCRIBED HEREIN IS SUBJECT TO ALL THE TERMS, EXCLUSIONS AND CONDITIONS OF SUCH POLICIES. LIMITS SHOWN MAY HAVE BEEN REDUCED BY PAID CLAIMS.

INSR LTR	TYPE OF INSURANCE	ADDL INSD	SUBR WVD	POLICY NUMBER	POLICY EFF (MM/DD/YYYY)	POLICY EXP (MM/DD/YYYY)	LIMITS
A	<input checked="" type="checkbox"/> COMMERCIAL GENERAL LIABILITY <input type="checkbox"/> CLAIMS-MADE <input checked="" type="checkbox"/> OCCUR GEN'L AGGREGATE LIMIT APPLIES PER: <input type="checkbox"/> POLICY <input checked="" type="checkbox"/> PROJECT <input type="checkbox"/> LOC OTHER:	<input checked="" type="checkbox"/>	<input checked="" type="checkbox"/>	6808N190672	6/30/2025	6/30/2026	EACH OCCURRENCE \$1,000,000 DAMAGE TO RENTED PREMISES (Ea occurrence) \$1,000,000 MED EXP (Any one person) \$10,000 PERSONAL & ADV INJURY \$1,000,000 GENERAL AGGREGATE \$2,000,000 PRODUCTS - COMP/OP AGG \$2,000,000 \$
A	<input checked="" type="checkbox"/> AUTOMOBILE LIABILITY <input checked="" type="checkbox"/> ANY AUTO <input type="checkbox"/> OWNED AUTOS ONLY <input type="checkbox"/> SCHEDULED AUTOS <input checked="" type="checkbox"/> HIRED AUTOS ONLY <input checked="" type="checkbox"/> NON-OWNED AUTOS ONLY	<input checked="" type="checkbox"/>	<input checked="" type="checkbox"/>	BA8R804284	6/30/2025	6/30/2026	COMBINED SINGLE LIMIT (Ea accident) \$1,000,000 BODILY INJURY (Per person) \$ BODILY INJURY (Per accident) \$ PROPERTY DAMAGE (Per accident) \$ \$
B	<input checked="" type="checkbox"/> UMBRELLA LIAB <input checked="" type="checkbox"/> OCCUR <input type="checkbox"/> EXCESS LIAB <input type="checkbox"/> CLAIMS-MADE <input type="checkbox"/> DED <input checked="" type="checkbox"/> RETENTION \$10,000	<input checked="" type="checkbox"/>	<input checked="" type="checkbox"/>	CUP8N201316	6/30/2025	6/30/2026	EACH OCCURRENCE \$5,000,000 AGGREGATE \$5,000,000 \$
C	WORKERS COMPENSATION AND EMPLOYERS' LIABILITY ANY PROPRIETOR/PARTNER/EXECUTIVE OFFICER/MEMBER EXCLUDED? (Mandatory in NH) If yes, describe under DESCRIPTION OF OPERATIONS below	<input checked="" type="checkbox"/>	<input type="checkbox"/>	UB8N190948	6/30/2025	6/30/2026	<input checked="" type="checkbox"/> PER STATUTE <input type="checkbox"/> OTH-ER E.L. EACH ACCIDENT \$1,000,000 E.L. DISEASE - EA EMPLOYEE \$1,000,000 E.L. DISEASE - POLICY LIMIT \$1,000,000
D	Professional Liability	<input checked="" type="checkbox"/>	<input type="checkbox"/>	DPR5045531	6/30/2025	6/30/2026	Per Claim \$5,000,000 Annual Aggregate \$5,000,000

DESCRIPTION OF OPERATIONS / LOCATIONS / VEHICLES (ACORD 101, Additional Remarks Schedule, may be attached if more space is required)

The claims made professional liability coverage is the total aggregate limit for all claims presented within the annual policy period and is subject to a deductible. Thirty (30) day notice of cancellation in favor of certificate holder on all policies.
Polk County, A Political Subdivision of the State of Florida are named additional insured on the general, auto, and umbrella liability coverage as required by written contract. A waiver of subrogation is shown in favor of the additional insured on all policies as required by written contract.
Re: CSA #2024-014-03, Sun Ray WWTF Advanced AWTF Upgrades & Improvements Evaluation.

CERTIFICATE HOLDER Polk County, A Political Subdivision of the State of Florida 330 W. Church Street MC #AS05 Bartow FL 33830	CANCELLATION SHOULD ANY OF THE ABOVE DESCRIBED POLICIES BE CANCELLED BEFORE THE EXPIRATION DATE THEREOF, NOTICE WILL BE DELIVERED IN ACCORDANCE WITH THE POLICY PROVISIONS. AUTHORIZED REPRESENTATIVE RSC Insurance Brokerage
--	---

© 1988-2015 ACORD CORPORATION. All rights reserved.