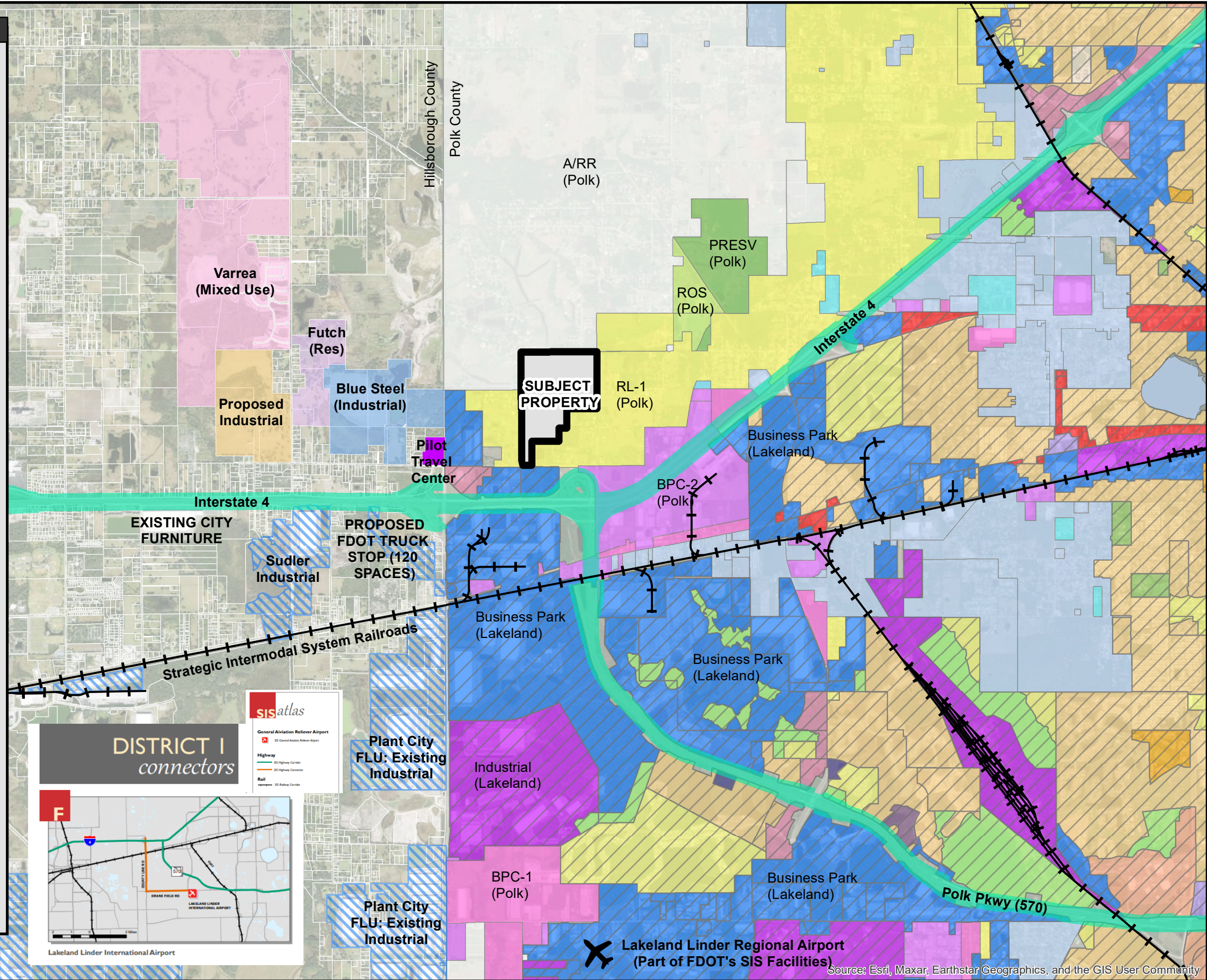


LEGEND

- SIS Railroads
- Strategic Intermodal System (SIS) Roads
- SUBJECT PROPERTY
- Plant City Industrial FLU properties
- Polk County Future Land Use**
- <all other values>
- A/RR
- BPC-1
- BPC-2
- CITY
- INST-1
- INST-2
- PRESV
- RL-1
- ROS
- HC Active CPA App: Pilot Travel Center
- HC Active CPA App: Blue Steel (Transmitted)
- HC Active CPA App: Futch (Residential)
- HC Active CPA App: PC/CPA-22-10 (Industrial, Transmitted)
- HC Active CPA App: Varrea (Mixed Use)
- Hillsborough County Parcels
- Lakeland FLU (Identifying Overlay)**
- Lakeland FLU (Identifying Overlay)
- LakelandFLU_0522**
- <all other values>
- Current FLU**
- Business Park
- Community Activity Center
- Conservation
- Convenience Center
- Industrial
- Interchange Activity Center
- Mixed Commercial Corridor
- Neighborhood Activity Center
- Office Center
- Preservation
- Public and Institutional
- Recreation
- Regional Activity Center
- Residential High
- Residential Medium
- Residential Low



\\us0262-pplfs01\share\projects\215617786\gis\mxd\17786_MapX_ContextMap_v2_20240418.mxd Revised: 2024-04-18 By: ehente



Disclaimer: Stantec assumes no responsibility for data supplied in electronic format. The recipient accepts full responsibility for verifying the accuracy and completeness of the data. The recipient releases Stantec, its officers, employees, consultants and agents, from any and all claims arising in any way from the content or provision of the data.

Notes:
 1. Coordinate System: NAD 1983 StatePlane Florida West FIPS 0902 Feet
 2. Source data: Hillsborough County, Polk County, City of Lakeland, FDOT SIS Atlas
 3. Imagery: ESRI Google Basemap

Map X: Context Map
 POLK COUNTY, FLORIDA
 April 2024

Stantec Consulting Services Inc.
 6900 Professional Pkwy E.
 Sarasota, FL 34240
 tel 941.907.6900
 fax 941.907.6910



Prepared by: E.K.H. 04/18/24
 Technical Review by: X.X.X MM/DD/YY
 Independent Review by: X.X.X MM/DD/YY

Source: Esri, Maxar, Earthstar Geographics, and the GIS User Community