

Exhibit A-ii
Proposal

RFP NO. 18-1025

Professional A/E
Services for a
New Prototype
Fire Rescue Station

THE
LUNZ
GROUP

POLK COUNTY PROCUREMENT



August 30, 2018

**POLK COUNTY, A POLITICAL SUBDIVISION OF
THE STATE OF FLORIDA
ADDENDUM # 1
RFP 18-1025
ARCHITECTURAL/ENGINEERING SERVICES FOR THE NEW POLK
COUNTY PROTOTYPE FIRE RESCUE STATION**

This addendum is issued to clarify, add to, revise and/or delete items of the Bid Document for this work. This Addendum is a part of the Bid Document and acknowledgment of its receipt shall be noted on the Addendum.

Contained within this addendum: Prototype site visit, questions deadline extension, questions received.

A **NON - MANDATORY** site visit to the current prototype station will be held on **Monday September 10, 2018 at 1:00 p.m.**, at the Lake Marion Creek Fire Rescue Station, located at 9500 Marigold Avenue, Poinciana FL 34759.

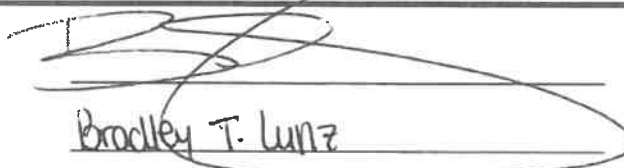
The RFP Question Deadline has been extended six days (6). The **revised** Question Deadline is Thursday, September 13, 2018 prior to 4:00 p.m.

Carlos Baez

Carlos Baez
Procurement Specialist
Procurement Division

This Addendum sheet should be signed and submitted with your bid submittal. This is the only acknowledgment required.

Signature:



Printed Name:

Bradley T. Lutz

Title:

President

Company:

The Lutz Group

September 5, 2018

**POLK COUNTY, A POLITICAL SUBDIVISION OF
THE STATE OF FLORIDA
ADDENDUM # 2
RFP 18-1025
ARCHITECTURAL/ENGINEERING SERVICES FOR THE NEW POLK
COUNTY PROTOTYPE FIRE RESCUE STATION**

This addendum is issued to clarify, add to, revise and/or delete items of the Bid Document for this work. This Addendum is a part of the Bid Document and acknowledgment of its receipt shall be noted on the Addendum.

Contained within this addendum: questions received.

Carlos Baez

Carlos Baez
Procurement Specialist
Procurement Division

This Addendum sheet should be signed and submitted with your bid submittal. This is the only acknowledgment required.

Signature: _____

Printed Name: _____

Title: _____

Company: _____

[Handwritten Signature]
Bradley T. Lutz
President
The Lutz Group

September 11, 2018

**POLK COUNTY, A POLITICAL SUBDIVISION OF
THE STATE OF FLORIDA
ADDENDUM # 3
RFP 18-1025
ARCHITECTURAL/ENGINEERING SERVICES FOR THE NEW POLK
COUNTY PROTOTYPE FIRE RESCUE STATION**

This addendum is issued to clarify, add to, revise and/or delete items of the Bid Document for this work. This Addendum is a part of the Bid Document and acknowledgment of its receipt shall be noted on the Addendum.

Contained within this addendum: questions received.

Carlos Baez

Carlos Baez
Procurement Specialist
Procurement Division

This Addendum sheet should be signed and submitted with your bid submittal. This is the only acknowledgment required.

Signature:

Printed Name:

Title:

Company:

Bradley T. Lutz

President

The Lutz Group

Table of Contents

EXECUTIVE SUMMARY	5
APPROACH TO PROJECT	7
EXPERIENCE, EXPERTISE, PERSONNEL & TECHNICAL RESOURCES	11
IS THE FIRM A “POLK COUNTY ENTITY”?	31
IS THE FIRM A “CERTIFIED WOMAN OR MINORITY BUSINESS ENTERPRISE”?	35
INTERACTIONS WITH COUNTY AND REGULATORY AGENCY STAFF	37
TIMELY COMPLETION OF PROJECTS	39
SURVEYS OF PAST PERFORMANCE	41



PHONE 863.662.1882
FAX 863.697.6346
EMAIL blunz@lunz.com

58 Lake Morton Drive
Lakeland, FL 33801

www.lunz.com
EST. 1987 (158)

September 20, 2018

Carlos Baez, Procurement Analyst
Polk County Procurement Division
330 West Church Street, Room 150
Bartow, FL 33830

Dear Selection Committee:

We are excited at the opportunity presented by the RFQ to design the new fire station prototype for our Polk County Fire Rescue personnel. It is our intent that this new station will embody the emerging and important trends of firefighter health and safety. It will lower initial costs. It will maintain optimum operational and life cycle efficiency.

The team presented is unique in three distinct ways:

Fire Station Expertise:

- Ken Newell is a national expert in all things Fire Station design. He is an industry leader regarding safety and performance of fire rescue personnel based on architectural design. As an individual, he has more experience in individual fire station design than probably anyone in the entire nation.
- The Lunz Group is the only Polk County Firm with direct fire station experience for multiple fire departments in Central Florida the past five years.
- The team members presented have direct experience on more than 400 stations throughout the nation.

Polk County Knowledge:

- The Lunz Group has a long working relationship with Polk County, as well as knowledge of the history specifically between the County and Polk County Fire Rescue.
- We are a Polk County firm. We started in Polk. We live in Polk. We are here to serve our county. The companies on this team employ 145 Polk County residents.

Commitment to our Client:

- Since 1997 we have had the pleasure of serving the County. We are a trusted resource.
- 90 percent of our clients are either repeat or referred clients. Polk County is one of our longest running clients. Polk County Fire Rescue is one of the longest running fire departments we have had the privilege to serve.

We are excited to embark on designing the new prototype with the new leadership at Polk County Fire Rescue - a prototype that is responsive to current and future needs of our fire-fighters, as well as our paramedics. Thank you all for considering The Lunz Group and our team for our county's newest fire rescue station.

Sincerely,

Bradley T. Lunz, AIA, NCARB, LEED AP, GGP, President

Executive Summary



The Lunz Group (Headquarters)

58 Lake Morton Dr
Lakeland, FL 33801

*31 years at current office location
22 full-time employees*

Branch Office Locations

Celebration

615 Celebration Ave
Celebration, FL 34747

Dunedin

585 Main St, #201
Dunedin, FL 34698

State of Florida Department of State

I certify from the records of this office that THE LUNZ GROUP, INC. is a corporation organized under the laws of the State of Florida, filed on November 6, 1987, effective November 5, 1987.

The document number of this corporation is K00761.

I further certify that said corporation has paid all fees due this office through December 31, 2018, that its most recent annual report/uniform business report was filed on January 10, 2018, and that its status is active.

I further certify that said corporation has not filed Articles of Dissolution.

*Given under my hand and the
Great Seal of the State of Florida
at Tallahassee, the Capital, this
the Tenth day of January, 2018*



Ken Detjen
Secretary of State

Tracking Number: CC9523672107

To authenticate this certificate, visit the following site, enter this number, and then follow the instructions displayed.

<https://services.sunbiz.org/Filings/CertificateOfStatus/CertificateAuthentication>

STATE OF FLORIDA
DEPARTMENT OF BUSINESS AND PROFESSIONAL REGULATION
BOARD OF ARCHITECTURE & INTERIOR DESIGN

LICENSE NUMBER

AAC001502

The ARCHITECT CORPORATION
Named below IS CERTIFIED
Under the provisions of Chapter 481 F.S.
Expiration date FEB 28, 2019

THE LUNZ GROUP, INC.
58 LAKE MORTON DR
LAKELAND FL 33801-6140



Approach to Project



Approach to Your Project

The Lunz Group begins each project by fostering a dynamic working relationship between our clients and our project team. While working with Polk County for more than 20 years, we still approach the project as if it was our first time. We identify your vision and mission, establish clear lines of communication, and work to become an invaluable partner working as an extension of your internal team. We work to understand your standards and your preferred working style to ensure effective communication, quick problem solving, and the delivery of a prototype that far surpasses your needs and expectations.

The Lunz Team's design approach for this prototype project is an efficient and simple four-step process:

INVESTIGATE > COLLABORATE > DOCUMENT > BUILD



Peace Creek Fire Station

Investigate

We first start by viewing each problem from a variety of angles with all potential users. Upon initiation of a project, The Lunz Group and its team members start collecting, collating, thoroughly reviewing all the raw data and meeting with individual key stakeholder groups.

Considered a leading expert on the design of modern Fire Stations, we have brought Ken Newell on board as the expert for design as it relates to fire personnel health and safety. Ken has consulted on more than 275 Public Safety Facility projects nationwide. He is a partner at **Stewart-Cooper-Newell Architects, P.A.** Utilizing their expertise paired with our knowledge of local needs and services, The Lunz team brings more than 90 years combined experience as it relates directly to the needs of Polk County's fire-fighting personnel.

Our goal in this phase is to collate all the data into a building program and identify the goals of each group, as well as opportunities and potential roadblocks. Identifying and incorporating the latest standards and health trends including hot zone control in fire stations is critical to the success of this prototype design.

Collaborate

After the building program is completed and our goals, opportunities and potential roadblocks have been identified, all the team members and key stakeholders come together to review our findings. We will discuss concerns and identify areas needing attention, advising our recommended approach based on our discussion. We will then begin to layout the prototype, creating a rough mass and floor plan. The result of this step is the schematic design of the new prototype fire station.

Approach to Project



Document

After the design of the prototype has been established, we will begin document production based on the needs of the project based on priority. The Lunz Team establishes milestones for document production based on your project timelines. At each milestone we deliver permit, bid and construction documents for stakeholder review. Reviewers have ample time to review, capturing all feedback before returning to The Lunz Group who then resolves any issues or concerns raised during review. The final step of this phase is delivery of permit, bid and construction documents. Our goal during this phase is to deliver complete and accurate document set for use in permitting, bidding and construction.

Build

This is the phase where the rubber meets the road. After delivery of the final set of permits, bid and construction documents, the project is ready to be constructed. The Lunz Group provides full bid assistance and construction administration throughout the project. The Lunz Group has an excellent record of providing building departments and contractors with well-documented, thoroughly coordinated drawings and specifications on all of our projects. Our attention to detail and ability to fast-track submissions often means much less time in the permitting process - meaning a quicker project start-up for construction. This also ensures that there is not a delay in providing responses and capturing all comments in the final bid documents to avoid change orders.

We are with our clients from start to finish.

Coordination with CMAR Firms

Many of our projects (including several for Polk County) throughout the years have been constructed under the CMAR method utilized by the County. Our interface with the Construction Manager will begin as soon as they are selected to utilize their knowledge and expertise in pricing, evaluating materials and methods of construction regarding prototype fire stations in our area. We will work closely with the Construction Manager as we design the prototype to take advantage of the market conditions. As a "team," we feel that a better quality, more economical and timelier project can be delivered by working with each other and utilizing the skills each brings to the table. Providing a review of the CMAR pricing and offering input on subcontractors, material options and delivery methods will be performed throughout the project. Our goal is to work together with the Construction Manager to meet the needs of the County while still maintaining an independent voice on pricing and construction quality during the life of the project.



Approach to Project



CMAR Project Delivery Experience

The Lunz Group has completed several Construction Management at Risk projects. Below is a sample of projects recently completed within the county:

Example One: Lakeland Linder South MRO (NOAA)

The Lunz Group assisted Lakeland Linder Regional Airport in preparing conceptual design documents for their proposal to relocate the AOC for the Hurricane Hunters. This included preliminary designs, schedule development, site feasibility, producing the required documents and working with the airport staff to develop the response for this bid. Through The Lunz Group's collaborative and interactive design process, the team was able to deliver documentation on an accelerated schedule.



Example Two: Four Corners Fire Station

Designed to fit the context of a residential area that has a light to moderate density. Breaking up the two masses through rotation of the ridge line of the Apparatus Bay and the Fire House creates a strong presence along the street front while the adjacent sides of the building are visually diminutive and appropriate for residential context.

Example Three: Fire Station #7 / ARFF

Station 7 is located at Lakeland Linder Regional Airport and serves both as a community station and an Aircraft Rescue and Firefighting Station. Three bays serve Community needs while two bays serve Lakeland Linder Airport. The facility's community room was designed to double as a training area and command center during emergencies.



Example Four: Polk Nature Discovery Center

The Environmental Education Center is a joint project of Southwest Florida Water Management District and the Polk County Natural resources Department. Composed of four buildings, the complex provides multiple activities for the public. The project was designed in the style of "Old Florida" and located in a pristine 1,200 acre nature preserve. Traffic flow, varied uses and multiple age groups are all accommodated in this accessible, natural setting.

Approach to Project



Select Team Fire Station Experience

- DeLand Fire Station 81 Study
- Haines City Fire Station Facility
- Apopka Fire Station Northwest Regional Park
- Hillsborough County Sun City/ Providence Fire Station
- Ewell Road Fire Station
- Highway 54 Fire Station Roof Modifications
- Willow Oak Fire station
- East Bushnell Fire Station
- Wildwood Fire Station Drainage Modifications
- Desoto City Fire Station For Ems Remodel
- Fire Station Inspections
- Mulberry Fire Station & Concession Stand
- Ranch Lands Fire Station II
- Pasco County Countywide Fire Station Design
- City of Kissimmee Fire Station #11
- Big Pine Key Fire Station
- Volusia County 3 New Fire Stations
- Cottonwood Fire Station - Permanent Bldg.
- Kissimmee Fire Station #4
- DeLand Fire Station No. 1 Replacement Study
- Jan Phyl Village Fire Station
- Winter Haven Fire Station
- New Fire Station/Site Analysis Polk County Term Project
- Lakeland Airport & Community Fire Station
- Davenport Fire Station Remodel
- Naples Fire Station
- North Wildwood Fire Station
- Loughman Fire Station Remodel
- Jan Phyl Village Fire Station
- Ranch Lands Fire Station
- Bradley Junction Lake Hamilton & Loughman Fire Station Remodel
- Orange County Fire Station
- Southwest Sumter Fire Station
- Marion Creek Fire Rescue Station
- Haines City Fire Station
- Marion County Prototype Fire Station
- Ewell Road Fire Station
- Saddle Creek Fire Station
- West Wildwood Fire Station
- Providence Road Fire Station
- Polk City & Eagle Lake Fire Rescue Facility Assessments
- Bradley Junction Fire Station Remodel
- Peace Creek Fire Station
- Coleman Fire Station Sleeping Quarters
- Lake Hamilton Fire Station Remodel
- Jan Phyl Fire Station Breezeway Revisions
- Fire Station #3 Addition
- Sun Air Fire Station Addn. Polk County Term Project
- Peace Creek Fire Station
- Davenport Fire Station Remodel
- ADA Compliance - Villages Fire Station
- Waverly Park Fire Station
- Town of St. Leo Fire Station
- Captiva Island Fire District
- City of Oviedo Central Avenue Fire Station
- City of St. Cloud Fire Station #31
- Indian River County Fire District
- Lake County Fire Rescue
- Marion County Fire District
- Osceola County Fire Rescue
- St. Lucie County Fire District
- Haines City Fire Station No. 1
- Martin County EOC
- Fort Myers Fire Station No. 2
- Tampa International ARFF
- Charlotte County Fire Stations 13 & 14
- Gainesville Fire Station No. 1
- Center for Public Safety
- Tampa International Airport Air Rescue Fire Fighting Facility
- Loughman Fire Rescue Station
- Grand Island, NE Fire + Rescue Station No.1 (Consulting)
- Greene, RI Western Coventry Fire District HQ (Consulting)
- Maplewood, MO Fire Station & Dispatch Center (Consulting)
- St. Charles, MO Public Safety Station No. 4 (Consulting)
- Oklahoma City, OK Fire Facilities Assessment (Consulting)
- Harrisonburg, VA Fire Department Renovations (Consulting)
- Richmond, VA Fire Stations Renovations (Consulting)
- Manhattan, KS Fire Stations No. 3 & 5 (Consulting)
- San Francisco, CA Fire Station No. 5 (Consulting)
- Waukesha, WI Fire Dept. HQ and Substation (Consulting)
- Kalispell, MT Evergreen Fire Station (Consulting)
- Charlotte Douglas International Airport + NC National
- Guard Fire Crash & Rescue Station Danville, VA Fire Dept. HQs / 911 / EOC Emergency Management
- Apex Public Safety Station No. 4
- Windsor Locks, CT Feasibility Study - Police / Fire + Town Hall
- Fayetteville, NC Police, Town Hall, Fire + Parks Study
- Fayetteville, NC Fire Stations (3)
- Ft. Lauderdale, FL Fire Stations No. 8 + 54 Feasibility Study
- Hampton, VA Fire Station No. 11 - LEED Silver Certified
- Henrico County, VA Fire Stations No. 10 & 13 - LEED Gold Certified
- Carrboro, NC Fire Department - Sustainable Design
- North Port, FL Fire Stations No. 82, 83, & 84 - FL Green Bldg. Stds.
- Maumelle, AR Fire & Police Departments Space Needs Study + Design (Consulting)
- Casper, WY Fire Station No. 3
- Kitty Hawk, NC Fire Department Headquarters
- Pine Knoll Shores, NC Fire, Police & EMS HQ
- Biltmore Forest, NC Skyland Fire & Rescue No. 4
- Wilmington, NC Fire Stations Long Range Facilities Mgmt. Plan
- Jacksonville, NC Fire and Police Space Needs Study
- Jacksonville, NC Fire Station No. 2
- Upper Hominy, NC VFD - Main Fire Station
- Beaufort, NC Fire Station
- Washington, NC Fire and Police Space Needs Study
- Washington, NC Fire + Rescue / EMS Headquarters
- Milton, GA Fire & Police Site Plan
- New Hanover County, NC Murrayville Fire + Rescue Dept.
- Greenville, NC Fire Rescue Station #6 / Fire Rescue Training

Experience, Expertise, Personnel & Technical Resources



Marion Creek Fire Rescue

The Marion Creek Fire Station is based on the Polk County Prototype designed by The Lunz Group. The project will service the northeastern side of the county and replace a temporary station. The new station is designed for ten personnel and four pieces of apparatus.

a) Marion Creek Fire Rescue, Polk County, FL

b) 7,600 SF; \$1,800,000

c) Steve McMillan
2160 Marshall Edwards Drive
Bartow, FL 33830
863.534.5527
stevemcmillan@polk-county.net

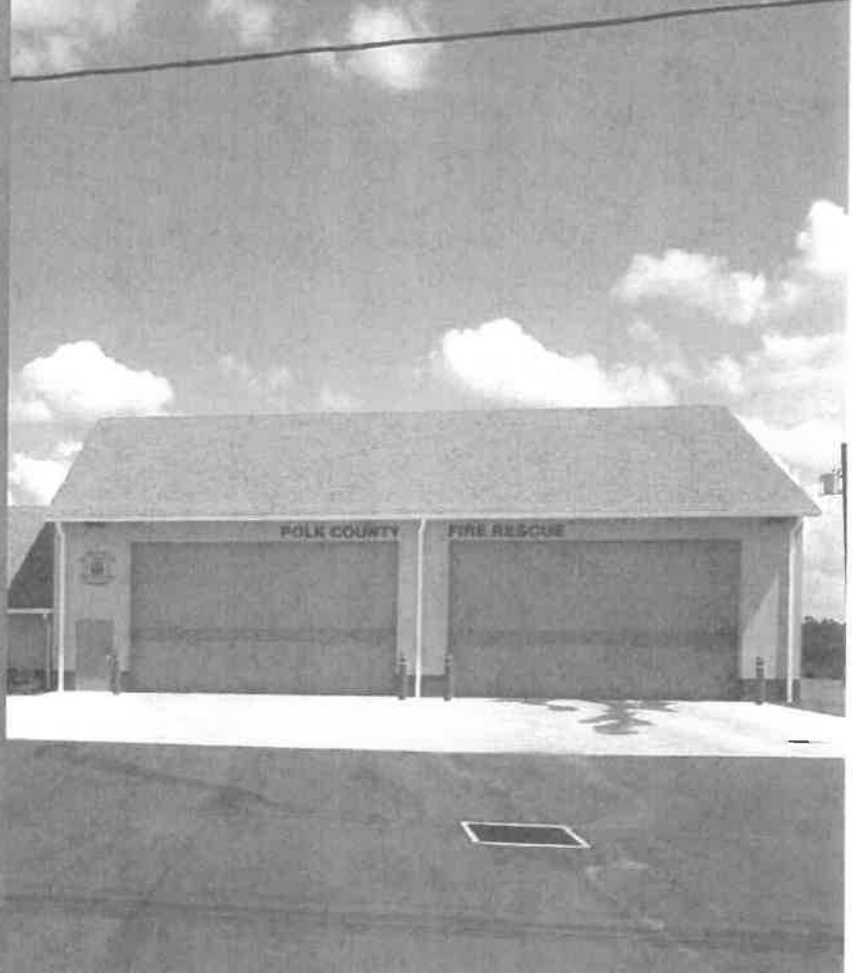
d) 2015

e) 2017

f) Architectural Services

g) N/A

h) N/A



Experience, Expertise, Personnel & Technical Resources



Fire Station 7/ARFF

a) Fire Station 7/ARFF, Lakeland, FL

b) 15,000 SF; \$3,700,000

c) Gene Conrad
900 Don Emerson Drive
Lakeland, FL 33811
813.760.7335
gene.conrad@lakelandgov.net

d) 2013

e) 2015

f) Architectural Services

g) N/A

h) N/A

Station No. 7 is located at Lakeland Linder Regional Airport and serves both as a community station and as an Aircraft Rescue and Fire Fighting station (ARFF). Three bays serve community needs while two bays serve Lakeland Linder Airport. The facility's community room was designed to double as a training area and command center during emergencies. This facility was designed using the GBI Green Globes Sustainable protocol and achieved two Green Globes ratings, making this the first and only Green Globes Certified ARFF facility in the country and the highest rated fire station in Florida.



Experience, Expertise, Personnel & Technical Resources



Sumter County Fire Station No. 11

a) Southwest Fire Station, Sumter County, FL

b) 7,600 SF; \$1,400,000

c) Bruce Atkinson
319 East Anderson Avenue
Bushnell, FL 33513
727.460.3018
bruce.atkinson@sumtercountyfl.gov

d) 2013

e) 2014

f) Architectural Services

g) N/A

h) N/A

A new three bay, 7,600 SF fire station based on a licensed reuse of the Sumter County prototype. Fully staffed the station will house six fire services personnel in three bunk rooms. Features include an office, training area, private bathroom, and shower for each bunk room, a fitness room, day room, kitchen with individual pantries that contain individual refrigerators. The Lunz Group provided additional value engineering and included cost effective components such as the bunk room storage units.

Experience, Expertise, Personnel & Technical Resources



Stewart-Cooper-Newell
Architects

Pleasant Valley Volunteer Fire Department

A) Pleasant Valley Volunteer Fire Department
Indian Land, South Carolina

B) 15,276 SF, \$2,050,000

C) Greg Nicholson, Fire Chief
9370 Possum Hollow Rd.
Indian Land, SC 29707
803.548.5600
gnicholson@PVFD14.org

D) 2009

E) 2011

F) Architectural Services

G) N/A

H) N/A

Stewart-Cooper-Newell Architects helped the department's leadership with their site selection process for this project, to aid them in finding a location that would best fit their station's needs. The facility has 4 double loaded, drive-through apparatus bays and was built using a metal building structure to decrease construction costs. The building's asphalt shingle roofing and exterior cladding were designed specifically to blend with the nearby residential neighborhoods.

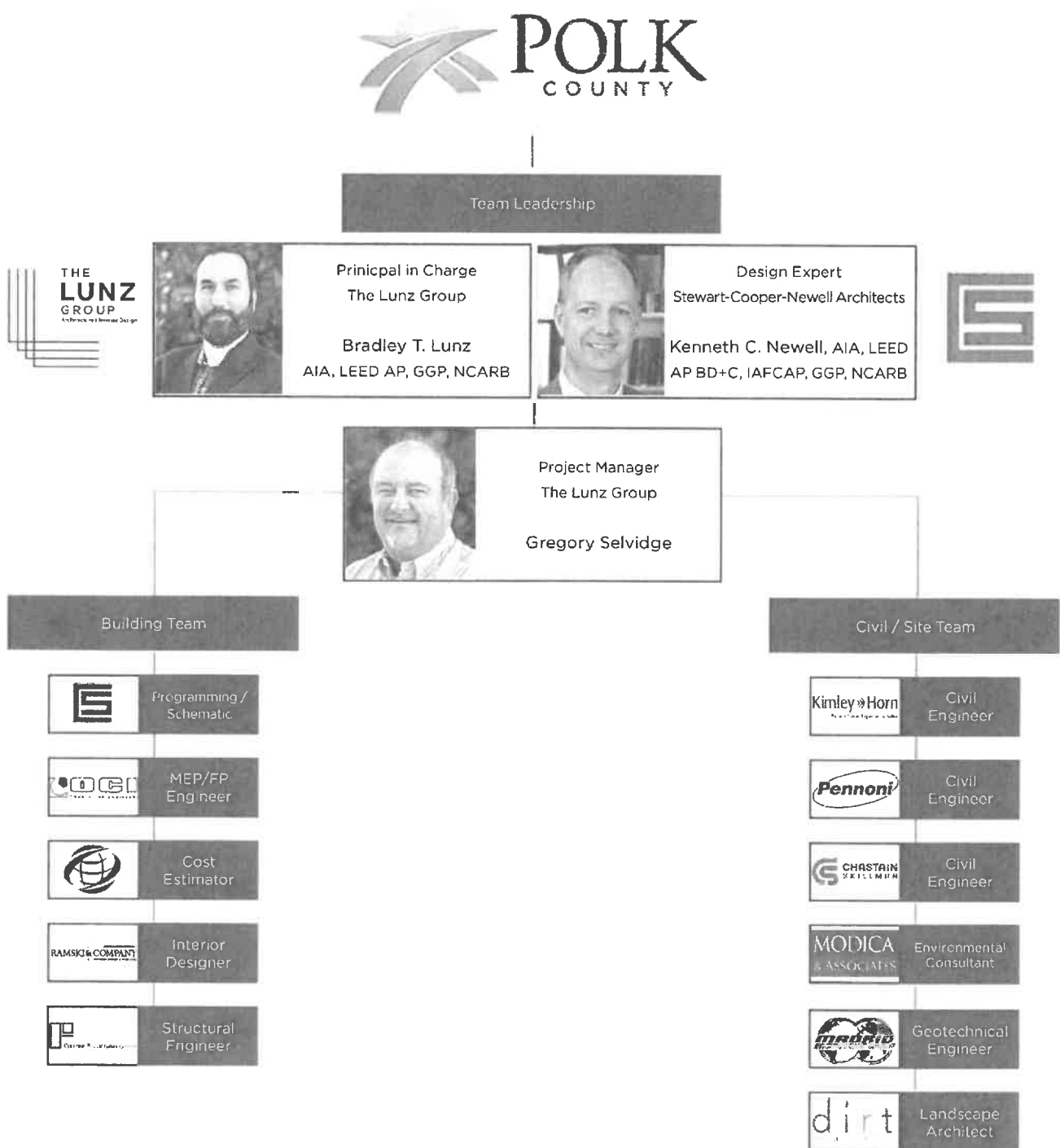
The station includes a training / meeting room for approximately 40 occupants that can be made available to the public without interfering with fire station operations. A large dayroom, kitchen and adjacent outdoor patio space provide spaces for the volunteers to gather, share meals and grill during warm weather. The facility's design also includes office space for station officers, a tool and equipment room, a small, private conference room and bunk rooms to accommodate future overnight shifts.



Experience, Expertise, Personnel & Technical Resources



Organizational Chart





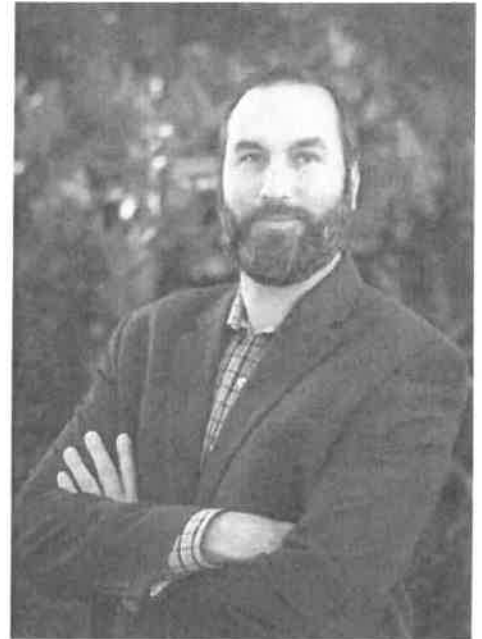
Bradley T. Lunz

AIA / LEED AP / GGP / IBC / CAR

PRESIDENT / PRINCIPAL IN CHARGE

- Master of Architecture, Savannah College of Art and Design
- Bachelor of Architecture, Savannah College of Art and Design
- Registered Architect in Florida
- LEED Accredited Professional
- Green Globes Professional
- 10 Years at The Lunz Group
- 17 Years of Total Experience

Mr. Lunz has worked on a variety of building typologies including fire and EMS facilities, county and state government buildings, and educational buildings. Mr. Lunz brings a breadth of experience in resolving a client's spatial and budgetary requirements while delivering a quality design exceeding expectations. He also strives to engage local manufacturers and suppliers.



Related Experience

Marion Creek Fire Station

CLIENT Sumter County BOCC SIZE \$1,800,000
ROLE Principal In Charge COMPLETED 2017

The Marion Creek Fire Station was developed from The Lunz Group's prototype design. The 7,588 sf facility accommodates two bays, a living area, offices and a community meeting room.

Mulberry Fire Station & Concession Stand

CLIENT Polk County, FL SIZE \$2,600,000
ROLE Principal in Charge COMPLETE Projected 2018

The Marion Creek Fire Station and the East Central Park Concession Building were a reuse of an existing design and the site. The plans and specifications for the Concession Building would be brought up to the current Florida Building Code 5th Edition (2014). In addition, work included additional services for water service supply, landscape and sewage disposal.

Sumter County Fire Station No. 11

CLIENT Sumter County BOCC SIZE \$1,400,000
ROLE Project Architect COMPLETED 2016

The Sumter County Fire Station 11 is a 7,363 square foot facility adapted from their standard prototype. The station includes living quarters for seven (7) fire fighters, a three (3) vehicle apparatus bay, offices, training room, weight room, and storage facilities.

Additional Fire Rescue Experience

- Sumter County North Wildwood Fire Station
- City of Lakeland Fire Station No. 7/ARFF
- Apopka Fire Station
- Sumter County Southwest Fire Station
- Ranch Lands Fire Station
- City of Lakeland Fire Training Facility
- Four Corners Fire Rescue
- Villages Fire Station ADA Compliance
- Southwest Sumter Fire Station
- Haines City Fire Station
- East Bushnell Fire Station
- Naples Fire Station
- Deland Fire Station 81 Study
- Coleman Fire Station
- Polk City and Eagle Lake Fire Station
- Desoto Fire Station for EMS Remodel
- West Wildwood Fire Station



KENNETH C. NEWELL, AIA, LEED AP BD+C, IAFC Programming and Schematic Design Architect



A Principal and Partner with Stewart-Cooper-Newell Architects since 1994, Ken has been directly involved in over 275 of the firm's 350+ Fire/EMS and Public Safety projects. Ken is a graduate of North Carolina State University and the University of North Carolina - Charlotte. A highly rated presenter who regularly speaks at various national and state fire conferences. He also contributes frequently to national and regional Fire/EMS publications. Over the last two decades, he has earned a respected reputation around the United States in efficient, effective and budget-conscious design and programming of Fire and Rescue Stations as well as Police Departments.

EDUCATION

University of North Carolina at Charlotte College of Architecture

- Bachelor of Art in Architecture (1986)

North Carolina State University School of Design

- Bachelor of Architecture (1988)

ARCHITECTURAL REGISTRATIONS

- North Carolina #6205
- South Carolina #4627
- GA, VA, FL, TN
- NCARB

PROFESSIONAL AFFILIATIONS

- American Institute of Architects (AIA)
- International Association of Fire Chiefs (IAFC)
- SC State Association of Fire Chiefs (SCSAFC)
- Virginia Fire Chiefs Association (VFCA)

PUBLICATIONS + PRESENTATIONS

- Ken is a frequent speaker at national Public Safety design conferences
- Ken routinely contributes articles on Fire Station Design to regional and national Fire & Rescue publications

CURRENT PROJECTS

- Mills River, NC Fire & Rescue HQs (Pre-Planning)
- Bristol, TN Fire Station No. 5 (Consulting)
- Raleigh, NC Fire Stations No. 6, 12 & 14 (Tracking LEED Silver)
- Apex, NC Public Safety Station No. 5
- Sumter, SC Fire Department
- Seiverville, TN Fire Station
- Lincoln, NE Fire Station Prototype (Consulting)
- Milton, GA Fire and Police Departments (Consulting)
- Pembroke, GA Public Safety Facility

PROJECT EXPERIENCE

- Grand Island, NE Fire + Rescue Station No.1 (Consulting)
- Greene, RI Western Coventry Fire District HQ (Consulting)
- Maplewood, MO Fire Station & Dispatch Center (Consulting)
- St. Charles, MO Public Safety Station No. 4 (Consulting)
- Oklahoma City, OK Fire Facilities Assessment (Consulting)
- Harrisonburg, VA Fire Department Renovations (Consulting)
- Richmond, VA Fire Stations Renovations (Consulting)
- Manhattan, KS Fire Stations No. 3 & 5 (Consulting)
- San Francisco, CA Fire Station No. 5 (Consulting)
- Waukesha, WI Fire Dept. HQ and Substation (Consulting)
- Kalispell, MT Evergreen Fire Station (Consulting)
- Charlotte Douglas International Airport + NC National Guard Fire Crash & Rescue Station - LEED Silver Certified
- Danville, VA Fire Dept. HQs / 911 / EOC Emergency Management
- Apex Public Safety Station No. 4
- Windsor Locks, CT Feasibility Study - Police / Fire + Town Hall
- Fayetteville, NC Police, Town Hall, Fire + Parks Study
- Fayetteville, NC Fire Stations (3)
- Ft. Lauderdale, FL Fire Stations No. 8 + 54 Feasibility Study
- Hampton, VA Fire Station No. 11 - LEED Silver Certified
- Henrico County, VA Fire Stations No. 10 & 13 - LEED Gold Certified
- Carrboro, NC Fire Department - Sustainable Design
- North Port, FL Fire Stations No. 82, 83, & 84 - FL Green Bldg. Stds.



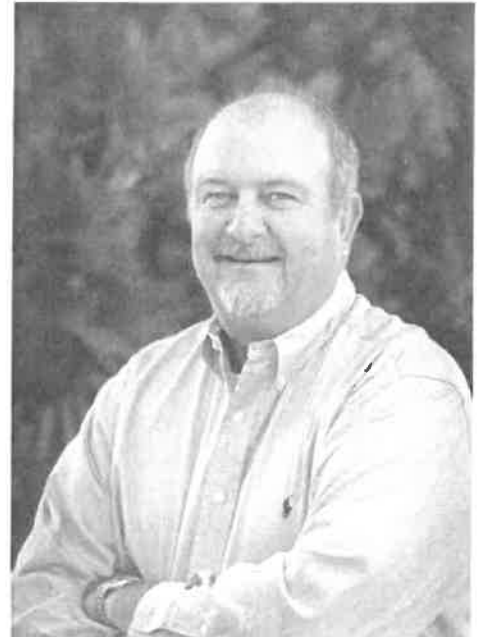


Gregory D. Selvidge

PROJECT MANAGER

- Georgia Institute of Technology
- University of Tennessee School of Architecture
- Associate in Science, St. Petersburg Junior College
- Registered Residential Contractor in Florida
- 15 Years at The Lunz Group
- 25 Years of Total Experience

Mr. Selvidge has a strong background in construction, architectural and product design, especially as it relates to fire stations. As a current and past owner and decision maker of several construction design firms, he is well aware of all facets of construction administration and project management. Mr. Selvidge has also passed the residential contractors exam for the state of Florida which further demonstrates his knowledge and ability to oversee construction.



Related Experience

Mulberry Fire Station & Concession Stand

CLIENT Polk County, FL SIZE \$2,600,000
ROLE Project Manager COMPLETED Projected 2018

The Marion Creek Fire Station and the East Central Park Concession Building were a reuse of an existing design and the site. The plans and specifications for the Concession Building would be brought up to the current Florida Building Code 5th Edition (2014). In addition, work included additional services for water service supply, landscape and sewage disposal.

Marion Creek Fire Station

CLIENT Sumter County BOCC SIZE \$1,800,000
ROLE Project Manager COMPLETED 2017

The Marion Creek Fire Station was developed from The Lunz Group's prototype design. The 7,588 sf facility accommodates two bays, a living area, offices and a community meeting room.

Apopka Fire Station

CLIENT City of Apopka SIZE \$1,500,000
ROLE Project Manager COMPLETED 2018

Design for a new fire station located on Recreation Highway and Jason Dwelley Parkway. The station accommodates two bays, a living area, offices and a command room. The Lunz Group provided conceptual design and construction documentation. Services including fire protection, structural, mechanical, plumbing, and electrical engineering. Civil engineering and Landscape Architecture were also included.

Four Corner Fire Rescue

CLIENT Sumter County BOCC SIZE \$985,000
ROLE Project Manager COMPLETED 2012

The Four Corners Fire Rescue Station was developed from The Lunz Group's prototype design. The 7,588 sf facility accommodates two bays, a living area, offices and a community meeting room.

Sumter County Southwest Fire Station

CLIENT Sumter County BOCC SIZE \$1,400,000
ROLE Project Manager COMPLETED 2014

A new fire station based on a licensed reuse of the Sumter County Prototype. The station is 3 bay, 7,600 sf facility. Features include an office, training area, private bathroom, and shower for each bunk room, a fitness room, day room and a kitchen with individual pantries that contain individual refrigerators.

Sumter County Fire Station No. 11

CLIENT Sumter County BOCC SIZE \$1,400,000
ROLE Project Manager COMPLETED 2016

The Sumter County Fire Station 11 is a 7,363 square foot facility adapted from their standard prototype. The station includes living quarters for seven (7) fire fighters, a three (3) vehicle apparatus bay, offices, training room, weight room, and storage facilities.

Experience, Expertise, Personnel & Technical Resources



JAMES R. STUMBO, AIA, LEED AP BD+C, NFPA Programming and Schematic Design Architect



Jim has been practicing architecture since he graduated from the University of Tennessee in 1986. He joined Stewart-Cooper-Newell Architects in 1999 and became a Principal & Partner in 2002. Jim strives to design facilities that unify residents with the Government Entities that serve them, enhancing efficiencies and respecting the taxpayer. His experience with Government projects includes Long Range Planning, Space Needs Studies and Feasibility Studies along with New Facilities, Renovations and Additions. Jim listens carefully to the client's needs and understands the delicate balance between budgetary concerns, function and aesthetics; designing dynamic, sustainable and productive Governmental facilities.

EDUCATION

University of Tennessee

- Bachelor of Architecture (1986)

ARCHITECTURAL REGISTRATIONS

- North Carolina - #5728
- South Carolina
- NCARB

PROFESSIONAL AFFILIATIONS

- American Institute of Architects (AIA)
- National Fire Protection Association (NFPA)
- Int'l Assoc of Chiefs of Police (IACP)
- Georgia Chiefs of Police (GACP)
- International Code Council (ICC)

PUBLICATIONS + PRESENTATIONS

Jim has written articles that have been published in Carolina Fire & Rescue Journal and Society of Americana Military Engineers. Jim has recently delivered presentations on Facility Design at the following regional conferences:

- Firehouse Station Design Conference
- FIERO, National Fire Station Symposium
- North Carolina Firefighter's Conference



CURRENT PROJECTS

- Bessemer City, NC Tyrnota Volunteer Fire Department
- Rock Hill, SC Fire Training Facility
- Burlington, NC Police Department Study
- Holly Springs, NC Public Works Study
- Union County, NC Sheriff Space Needs
- Boiling Spring Lakes, NC Police Dept. Renovation Design
- Florence County, SC 911 / E.O.C. Center

PROJECT EXPERIENCE

- Maumelle, AR Fire & Police Departments Space Needs Study + Design (Consulting)
- Casper, WY Fire Station No. 3 - Sustainable Design (Consulting)
- Kitty Hawk, NC Fire Department Headquarters
- Pine Knoll Shores, NC Fire, Police & EMS HQ
- Biltmore Forest, NC Skyland Fire & Rescue No. 4
- Wilmington, NC Fire Stations Long Range Facilities Mgmt. Plan
- Jacksonville, NC Fire and Police Space Needs Study
- Jacksonville, NC Fire Station No. 2
- Upper Hominy, NC VFD - Main Fire Station
- Beaufort, NC Fire Station
- Pasquotank Co., NC Public Safety Facility + 911 Center
- Washington, NC Fire and Police Space Needs Study
- Washington, NC Fire + Rescue / EMS Headquarters
- Milton, GA Fire & Police Site Plan
- Apex, NC Police Department Needs Assessment
- Apex, NC Police Department Additions & Renovations
- New Hanover County, NC Murrayville Fire + Rescue Dept.
- Wrightsville Beach, NC Public Safety Facility
- Holly Springs, NC Police Department & 911 Call Center
- Carteret Co., NC EOC/911 & Morehead City Police Dept
- Buncombe County, NC Courthouse Security (Consulting)
- Hampton, VA Police Dept & Court Study Security (Consulting)
- Greenville, NC Fire Rescue Station #6 / Fire Rescue Training Facility Master Plan
- Statesboro, GA Police Dept. + 911 Center
- Rowan County, NC 911 / E.O.C. Center
- Brunswick County, NC - 911 Emergency Services Facility

Experience, Expertise, Personnel & Technical Resources



AMIR KAZEMINIA, PE
 President/CEO
 Role: Principal-in-Charge



As OCI's Principal-in-Charge, Amir oversees the corporate office and 10 branch offices across the state of Florida and United States. He leads the team with over 35 years of experience in engineering design of HVAC, plumbing, and fire protection systems. As a seasoned professional, he is highly respected throughout the engineering industry and offers knowledge, understanding, and insight for troubleshooting potential problem areas and developing practical solutions. Amir is licensed in 23 states, Puerto Rico and the U.S. Virgin Islands.

Years of Experience
 28 Years with OCI
 35 Years Total Experience

Education
 BS Mechanical Engineering
 University of Central Florida

Registrations
 PE #42619

Captiva Island Fire District

This fire station is a two-story building with three vehicles bays. Features include (3) back-in Apparatus Bays, ground floor administration offices, and living quarters with bunk rooms that can accommodate up to six fire fighters on the second floor. Also included is a Fitness Room, Day Room, Report Writing and Kitchen with a dining area.

\$3.5 Million | 9,000 Square Feet

City of Oviedo Central Ave. Fire Station

The new Central Avenue Fire Station is a 2-story, 4-bay facility. The building contains administrative office space, crew living quarters, kitchen and dining facilities, workout room, equipment storage and workshop areas.

\$2.4 Million | 12,000 Square Foot

City of St. Cloud Fire Station #31

St. Cloud's Fire Station 31 is a single story, three-bay back-in station, which includes 4,500 SF for living quarters, 6,675 SF for the apparatus bay, and 2,325 SF for administration. The station houses five staff, and supporting spaces include kitchen/dining facilities, day room, fitness room, conference/training room, and administrative offices.

\$3.5 Million | 13,500 Square Feet

Indian River County Fire District

OCI Associates, Inc. provided engineering services for the development of a new fire station prototype for the Indian River County Fire District. Based on this prototype design the team completed design and construction for nine (9), two-bay fire stations equipped with sleeping quarters, kitchen, bathrooms, lockers and a workout room. The estimated total construction costs are \$2 million dollars per fire station.

Vero Beach Stations: Sebastian Stations #8, #9
 #2, #3, #4, #5, #6, #12, #13, #14 Wabasso Station #11

\$2 Million Per Station | 6,500 Square Feet Per Station

Lake County Fire Rescue

OCI's team provided engineering services for the development of a new 2-bay, 2-story fire station prototype. The prototype is equipped with sleeping quarters, a full kitchen, bathrooms, gear storage area, and a gym. OCI completed two stations of this prototype.

#13 Paisley Station #78 Lake Jern Station

\$1.4-\$2 Million Per Station | 7,697 Square Feet Per station

Marion County Fire District

OCI Associates, Inc. provided mechanical, electrical, plumbing and fire protection engineering design for the development of a new fire station prototype for the Marion County Fire District. Based on this prototype design the team completed design and construction for one (1), two-bay and five (5), three-bay stations equipped with sleeping quarters, kitchen, bathrooms, lockers and a work-out room. Fire Stations constructed using this prototype include:

#7 Ft. McCoy Station #31 Ray Loyd Jr. Station
 #18 Bellview Station #32 Liberty Station
 #21 Friendship Station

\$1.7 - 2.1 Million Per Station | 9,000 - 10,000 Square Feet Per Station

Osceola County Fire Rescue

OCI's design team provided engineering services for the design of a 4-bay fire station prototype. The stations include sleeping spaces, a gym, bathrooms, a full kitchen and dining room, and a gear storage area. OCI completed four stations using this prototype:

#62 Royal Palm Drive #71 W. Irlo Branson Memorial Hwy.
 #64 Pleasant Hill Road #73 Oseola Polkline Road

\$2.7 Million Per Station | 12,456 Square Feet Per Station

St. Lucie County Fire District

OCI Associates, Inc. provided mechanical, electrical, plumbing and fire protection engineering design for the development of a new fire station prototype for the St. Lucie County Fire District. Based on this prototype design the team completed design and construction for ten fire stations equipped with sleeping quarters, kitchen, bathrooms, lockers and a workout room.

#2 Seaway Dr. #8 S. Ocean Dr.
 #3 SW Ravenswood Ln. #10 SW Dalton Cr.
 #4 Industrial 33rd St. #12 SE Village Green Dr.
 #5 SE Port St. Lucie Blvd. #16 SW Port St. Lucie Blvd.
 #6 E. Midway Rd. #17 SW Village Pkwy.

\$2 - \$2.5 Million Per Station | 8,000 Square Feet Per Station

Experience, Expertise, Personnel & Technical Resources



Anita Carlsson Trout

Role: Principal-in-Charge / Cost Estimating

Anita Carlsson Trout is the founder and President of Carlsson Construction Estimators Inc. Woman-Owned cost consulting firm in Longwood, Florida. Mrs. Trout has been providing cost estimating/cost management services to the construction community for over 26 years in several capacities including project cost control, management, owner's representative and business management and marketing. During her career, Mrs. Trout has provided estimating services for several related projects with a focus on keeping project costs within scope and on budget. As Principal Estimator, Mrs. Trout provides detailed cost estimates and quantities for all aspects of projects with a focus on architectural, structural, and mechanical estimating. She also provides direct supervision, detailed reviews, and implementation of services for all staff.

Related project experience includes:

- Orange County Sheriff's Office New Fleet Facility – Orlando, Florida**
2018/Estimator/ \$8.0 million/45,000 GSF new construction
- Orange County FMD Special Services Renovations– Orlando, Florida**
2017/Principal Estimator/ \$600,000 / 5500 SF of interior renovations
- New Police Station – Maitland, Florida**
2016/Principal Estimator/ \$5.2 million /20,000 GSF
- Orange County Emergency Operations Center Renovations – Orlando, Florida**
2016/Principal Estimator / \$3.0 million/12,000 GSF renovations
- Center for Public Safety Seminole College – Sanford, Florida**
2011/Principal Estimator / \$2.0 million/8,000 GSF
- Palm Beach Gardens Municipal Complex – Palm Beach Gardens, Florida**
2008/Principal Estimator / \$7.0 million / Multi Building New Construction
- Tampa International Airport Air Rescue Fire Fighting Facility - Tampa, Florida**
2006/Principal Estimator / \$10.0 million / 23,000 GSF



YEARS OF EXPERIENCE:

26+ years

EDUCATION:

University of Central
Florida/Mechanical
Engineering

CARLSSON INC. JOB TITLE:

President/Principal
Estimator



CARLSSON INC.
CONSTRUCTION COST ESTIMATORS



Peace Creek Fire Station Kitchen

Experience, Expertise, Personnel & Technical Resources



Jennifer E. Ramski, IIDA

Role on Project: Principal-In-Charge

Ms. Ramski, Principal-in-Charge, founded Ramski & Company in 1989 and has led the studio's design development and growth since its inception. The firm's motto "Good Design is Good Design" has nurtured many long-term community relationships like the 20+ year association Ramski & Company shares with the University of Central Florida, Greater Orlando Aviation Authority, and Orange County Public Schools. Jennifer is passionate about education, interior design, and giving back. She has participated on advisory boards for University of Florida Department of Interior Design (15 years), Seminole State College (7 years) and the University of Florida graduate program of Architecture "CityLab Orlando" since its inception. An award-winning designer, Jennifer is most proud of the studio's reputation for quality work, her recent CREW Entrepreneurial Spirit Award, and the pro bono projects completed like the Lake Nona Ronald McDonald House – Nemours.

Relevant Projects:

Gainesville Regional Utilities Eastside Operations Center, Gainesville, FL
New Construction, Interior Design and Furniture Specification, 222,172 SF, \$54,000,000

Orange County Utilities Operations Center East, Orlando, FL
New Construction, Interior Design and Furniture Concepts, in progress

FDOT SunTrax Phase I, Auburndale, FL
New Construction, Interior Design and Furniture Specification, 6,200 SF

FDOT SunTrax Phase II, Auburndale, FL
New Construction, Finish and Furniture Specification, in Progress

Gainesville Fire Station No. 1, Gainesville, FL
New Construction, Interior Design and Furniture Specification, 24,000 SF

Kissimmee Fire Station No. 11, Kissimmee, FL
New Construction, Interior Design and Furniture Specification, 16,291 SF, \$4,350,000

Gainesville Police Department, Gainesville, FL
New Construction, Furniture Specification, 40,000 SF, \$11,000,000

Orlando Metrowest Police Department, Orlando, FL
Renovation and Addition, Interior Design, 3,412 SF, \$320,000

Orlando International Airport South Terminal APM, Orlando, FL
New construction, Full Service Interior Design
2,700,000 SF, \$1,800,000,000

Orlando International Airport Airside 4 Renovation, Orlando, FL
Phased occupied renovation, full service interior design, furniture specification, and construction administration
115,788 SF, \$64,000,000

Collier County Schools Administrative Center, Naples, FL
New Construction, 140,000 SF, \$9,700,000

Palm Coast City Hall, Palm Coast, FL
New Construction, Interior Design and Furniture Specification, 32,000 SF, \$7,400,000

UCF Partnership III, Orlando, FL
New construction, Interior Design, 118,860 SF, \$15,700,000

UCF Experiential Learning Building, Orlando, FL
New construction, Interior Design, 26,760 SF, \$6,100,000



YEARS WITH FIRM:
29 years

YEARS WITH OTHER FIRMS:
9 years

EDUCATION:
Bachelor of Design,
Interior Design, College
of Design, Construction
and Planning, University
of Florida

ACTIVE REGISTRATION:
Registered
Interior Designer
#1D0000023

CERTIFICATIONS:
NCIDQ, 1982

RAMSKI & COMPANY
INTERIOR DESIGN & PLANNING

500 Delaney Avenue, Suite 301
Orlando, FL 32801

Experience, Expertise, Personnel & Technical Resources



FULLONE STRUCTURAL GROUP

9600 KOGER BLVD. N., SUITE 227
ST. PETERSBURG, FLORIDA 33702
PHONE: (727) 577-2222
FAX: (727) 577-2221

Joseph P. Fullone, P.E., S.I. | President

Principal Structural Engineer

Joseph Fullone, founder of Fullone Structural Group, established the firm in 2008. He has extensive experience in both construction and structural engineering. He utilizes his knowledge and years of experience from the construction industry to provide clients with both structurally sound and economical designs.

Registration:

Professional Engineer - Florida - #67563
Special (Threshold) Inspector - Florida #7026832
Professional Engineer - Alabama - #31856-E
Professional Engineer - Pennsylvania - #PE082040
Professional Engineer - Georgia - #PE038854
NCEES Records Holder - #37515

Education:

University of South Florida - Bachelor of Science in Civil & Environmental Engineering

Experience:

18 Years Experience in both Construction & Structural Engineering

*Indicates projects completed with previous firm

Select Projects:

Select Projects:	Size	Location
East Bushnell Fire Station 11	7,363sf	Sumter County, FL
Martin County Emergency Operations Center*	71,000sf	Martin County, FL
Fort Myers Fire Station No. 2 EMS Addition*	1,800sf	Fort Myers, FL
Tampa International Airport ARFF Station*	28,000sf	Tampa, FL
Charlotte County Fire Stations 13 & 14*	4,100sf	Charlotte County, FL
Sumter County Maintenance Shop	5,000sf	Sumter County, FL
Sumterville Community Center	2,000sf	Sumter County, FL
St. Leo University – Arts Building Renovation	4,000sf	St. Leo, FL
Optimal Outcomes – Brandon Medical Office Building	34,000sf	Brandon, FL
Tampa Housing Authority – Office Renovation	20,000sf	Tampa, FL
Shooters World – Orlando	81,000sf	Orlando, FL
The Learning Experience	10,000sf	Pinellas Co., FL
The Island Way Grille	10,000sf	Tierra Verde, FL
Tampa Police Department – Firing Range, Classrooms & Shoot House	70,000sf	Tampa, FL
reLOAD Firing Range	65,000sf	Palm Harbor, FL
Surgery Center of Veira	20,000sf	Melborne, FL
Watson Clinic – Lakeland Highlands	40,000sf	Lakeland, FL
US Oncology – Florida Cancer Affiliates	30,000sf	New Port Richey, FL
Sumter County – Rodeo Reno & Bleachers	20,000sf	Sumter Co., FL
Optimal Outcomes – Office Building	10,000sf	St. Petersburg, FL
Derby Lane – Gutter Support Structure Restoration	100,000sf	St. Petersburg, FL
Central Florida Cancer Institute	20,000sf	Haines City, FL
Colonial Medical Office Building	20,000sf	Fort Meyers, FL
Fitzgerald Automall	20,000sf	Clearwater, FL
Fitzgerald Chrysler	20,000sf	Clearwater, FL
Clark & Daughtry MOB	12,000sf	Lakeland, FL
Estreno MOB	18,000sf	Naples, FL
Florida Cancer Specialists MOB	16,000sf	Spring Hill, FL
Trinity Corporate Center	21,500sf	Trinity, FL



Mark Wilson, P.E.

Project Manager

Relevant Experience

Facilities Management Multidisciplinary Continuing Contract/Polk County Sheriff's Office, Bartow, FL — Member of the Kimley-Horn team that provided civil engineering and master site planning (including construction plans) for improvements at the 72-acre, Polk County-owned Sheriff's Training Facility off of Old Bartow-Eagle Lake Road. The site contained a number of existing improvements, including portable buildings, a concrete sidewalk network, paved parking, shooting ranges, and storage areas. Kimley-Horn provided long-term master planning and design documents that consisted of a new tactical area with an earth berm for safety, a driving pad that is more than four acres in size, a one-mile paved driving course, a new access road, a five-story training simulator, a new observation tower, a canine administration building, and a new 5,000-square-foot storage building. Four wet stormwater ponds were designed and permitted to discharge to an impaired water body. The property was almost entirely reclaimed phosphate land—with parts within the 100-year flood zone—and had numerous wetland and marsh areas that were impacted. Kimley-Horn coordinated and contracted with surveyors, geotechnical engineers, and environmental engineers to help process this important project through Polk County Development Services, U.S. Army Corps of Engineers (USACE), Southwest Florida Water Management District (SWFWMD), and Florida Department of Environmental (FDEP).

Polk County Charter School, Lakeland, FL — Project manager. Kimley-Horn is providing professional civil engineering and landscape architectural services for this approximately 65,000-square-foot charter school to be located on Old Shepherd Rd in Lakeland, Florida. The school will provide education for up to 1,415 children from kindergarten to the eighth grade. Kimley-Horn's civil engineering services includes due diligence, preliminary site plan and site plan approval assistance; ALTA boundary and topography survey; traffic impact analysis; and site, water, sewer, utility and utility coordination plans. Kimley-Horn's services also include landscape and irrigation plans, as well as hardscape design. This project requires permitting from the Polk County Health Department, Polk County, South Florida Water Management District (SFWMD), and Florida Department of Environmental Protection (FDEP).

Community Development District Engineer, Polk County, FL — Principal-in-charge. Kimley-Horn has served as District Engineer for a number of Community Development Districts, including Posner City Center, Westridge, Oakmont, and Kenmare at Lake Annie. We provide professional engineering services on a continuing basis for planning and preparing reports and plans; surveying designs and specifications; construction administration for water management facilities; water, wastewater, and irrigation facilities; bridges and/or culverts; roadways, landscaping, conservation, and mitigation areas; and other public improvements and community facilities.

Polk City Government Center, Polk City, FL — QA/QC reviewer for the Kimley-Horn team that provided planning and civil engineering services for an 8,400-square-foot government building located on Broadway Boulevard (SR 559) and North Bougainvillea Avenue in Polk City. The project consisted of design and evaluation of the site layout, parking configurations, site grading, stormwater management, potable water distribution, and sanitary sewer collections systems.

Polk State College Center for Public Safety, Winter Haven, FL — Project engineer on the Kimley-Horn team that is providing engineering, transportation, and ecological services for the joint use Polk State College and Polk County Sheriff's Office training facility and school. The approximately 10 acre project and associated improvements will include a 100,000-square-foot building for 450 students.

Streamsong Resort (fka Stillwater Preserve), Polk County, FL — Principal-in-charge/project manager for this 16,000-acre, resource-based destination development in southwest Polk County. The project includes 36 holes of golf and a six-story hotel with a planned spa and high-end restaurant. The development will cater to sporting and outdoor activities including sporting clays, fishing, hunting, bird watching, kayaking, and canoeing, with numerous multi-purpose trails for hiking, running, and biking. Services provided included preparation of preliminary design, construction documents, and permitting through FDEP and Polk County.



Special Qualifications

- 30 years of experience in all aspects of land development design and permitting, including presentations to various city and county planning agencies in Central Florida.
- Former principal of Central Florida engineering firm that concentrated on land development activities for commercial and residential projects
- Has designed stormwater improvements, utility line extensions, sanitary sewer pump stations and associated modeling; roadway improvements relating to private developments; and developed master plan designs for mixed-use developments

Professional Credentials

- Bachelor of Science, Engineering, University of Central Florida, 1989
- Professional Engineer in Florida, 47615, March 3, 1994

Professional Affiliations

- Florida Engineering Society

Experience, Expertise, Personnel & Technical Resources



Kriss Y. Kaye, PE, CFM

Division Manager, Civil Engineering/Water Resources

EDUCATION

MS, Environmental Engineering;
University of Central Florida (1993)

BS, Environmental Engineering;
University of Central Florida (1991)

MBA Studies Univ. Lincoln Nebraska

PROFESSIONAL REGISTRATIONS

Professional Engineer: FL (#50607, exp. 2-28-19)

CERTIFICATIONS/TRAINING

Certified Floodplain Manager, FL
(#US0401320, exp. 1-31-19)

ICPR 4 Modeling Training, Streamlining
Technologies, Inc. (2017, no exp.)

FDOT Work Groups 3.1, 3.2, 10.1 (exp. 6-30-18)

BMPTRAINS Model Training, ERD
(2017, no exp.)

Complete Streets for All-One Block at a
Time (2016, no exp.)

Project Management, Pennoni (2015,
no exp.); 1st Place Team Competition

Hazardous Communication, ERCS
(2014, no exp.)

Stormwater Management Inspector,
FL (#1983, no exp.)

PROFESSIONAL AFFILIATIONS
Polk County Stormwater Technical
Advisory Committee, Vice Chair

FES/FDOH Technical Advisory Comm &
FES Conservation Env Quality Comm

PCBA FDOH RRAC and Govt Affairs
Committees

ASCE Ridge Chapter, Secretary

Florida Eng. Society, Ridge Chapter,
Vice President (2003-2005)

Leadership Winter Haven Class '36

HONORS/AWARDS

Statewide Engineering Excellence
Grand Award, FICE/ACEC-FL

Engineer of the Year Award, FES

Outstanding Contribution Project,
Heart of Florida Am. Planning Assoc

Project of the Year, ASCE

EXPERIENCE SUMMARY

Mr. Kaye serves as the Division Manager for the Site Civil Development and Water Resources Division in our Winter Haven, FL office. He has more than 25 years as the lead civil/environmental professional engineer of record for hundreds of public and private land developments, infrastructure improvement projects and engineering studies throughout central Florida with project budgets totaling more than \$300 million.

Mr. Kaye is proficient in the engineering and permitting of numerous supporting infrastructure systems: conceptual and preliminary engineering plans; directional and jack and bores; subsurface exfiltration systems; storm sewers; gravity sanitary sewers systems; master lift stations and force mains; decentralized wastewater treatment and low-pressure dosing drain fields; fire system designs; potable water distribution systems; master gravity sanitary sewer collection and transmission systems; reclaimed water systems; master grading and drainage systems; stormwater retention/detention facilities; low impact strategies/design techniques (excess runoff treatment, sorption media, volume controls, bio-swales, nutrient controls); artificial wetland and lake designs; flood compensation and wetland mitigation systems; stormwater pumping systems; regional & local watershed retrofits; maintenance of traffic and detour transportation systems; groundwater remediation systems; closed conduit and open channel capacity systems; and utility relocation designs.

Mr. Kaye has performed numerous modeling studies and concurrent designs, to include: Water distribution and sewer collection/transport system modeling; hydrologic/hydraulic modeling (using ICPR, PONDS and XPSWMM); closed conduit transient (water hammer) analyses; groundwater and solute transport modeling; subsurface remediation; watershed planning; floodplain analysis; and flood zone impact minimization and compensation. Prepared one of Polk County's largest hydraulic/hydrologic simulation for an 80-sq. mile area with the use of XPSWMM and the 12D models.

Mr. Kaye's permitting experience includes: FEMA flood map amendments; NPDES Construction/MS4 permitting; OSTDS permitting; USFWS ecological mitigation/impact avoidance; DHR clearances; ACOE approvals; FDEP/Health Department permitting; landfill operating permits and closures; domestic wastewater treatment; utility line permitting; SWFWMD Environmental Resource Permitting (150+ ERPs); and FDOT drainage and driveway connection permits.

REPRESENTATIVE PROJECTS

Polk County Facilities Management Division/Polk County Board of County Commissioners - Cottonwood Fire Station, Haines City/Davenport, FL

City of Winter Haven/McCree Design Builders - Main Fire Safety Complex No. 1 Winter Haven, FL

Polk County Facilities Management Division/Board of County Commissioners, Medulla Fire Station, Lakeland, FL

Polk County Facilities Management Division – Solivita Fire/EMS Station, Poinciana, FL

Experience, Expertise, Personnel & Technical Resources



CHASTAIN-SKILLMAN



Christopher B. Sipe • PE
Senior Project Manager

TENURE

32 years at Chastain-Skillman
33 Years in the Industry

EDUCATION

BSCE University of Florida

AREAS OF EXPERTISE

Site development engineering and project management

Municipal parks
Stormwater design and analysis
Roadway improvements
Subdivision design
Commercial complexes
Industrial parks
Utilities design

CLIENTS HAVE INCLUDED

Polk County
City of Auburndale
City of Winter Haven
City of Bartow
City of Lakeland
Sun 'n Fun EAA Fly-In, Inc.
Watson Clinic
Lakeland Regional Medical Center
Century Realty Funds, Inc.
Johnson Development
Victory Assembly of God
St. Paul's Lutheran Church
First United Methodist Church
The Ruthvens, Inc.
CF Industries, Inc.

ACTIVE REGISTRATIONS

Professional Engineer (Florida #42751)
CTQP QC Manager Certified

PROFESSIONAL EXPERIENCE

Mr. Sipe has 33 years of professional experience in engineering and planning of recreational and active park projects in central Florida. These include baseball, softball, football, and soccer facilities along with the associated infrastructure. His areas of expertise in civil engineering is infrastructure design, pavement and grading design, stormwater and utilities design and permitting. He has performed design, permitting and construction oversight for roadways, commercial vehicle parking and storage, approach roadways, and industrial site rail spurs. He has also provided site analysis, site layout, water, sewer, and earthwork services for a wide range of project types and sizes.

RELEVANT PROJECT EXPERIENCE

Lake Myrtle Sports Complex - Auburndale, Florida

Project Manager responsible for site, utility, and stormwater design to service the park facilities. Assisted in developing master plan of the park improvements. Provided civil engineering and permitting services to related to the collegiate ballfields and associated buildings and parking facilities. Provided value engineering review of the overall sports complex where implementation of cost-effective best management practices were utilized. Assisted in bidding and construction phase services.

Christina Park - Lakeland, Florida

Project Manager responsible for phased design of the overall park, site demolition plans, site infrastructure design, water system extension, sewer system design including new lift station and force main connection, and design of a master stormwater management system. Provide permitting through the various regulatory agencies. Provided construction reviews and oversight for the civil site work elements of the project.

Fire Station No. 7 - Lakeland, Florida

Project Manager providing civil engineering design and permitting for Fire Station No. 7 located at Lakeland Linder Regional Airport. This included site planning, site work design and construction phase services for the development of the fire station. Coordinated with the project team and municipalities for the cost effective completion of the facilities.

Fire Station No. 1 - Haines City, Florida

Project Manager responsible for providing civil engineering design and permitting for Fire Station No. 1 in Haines City. This included site planning, site work design and construction phase services for the development of the fire station. Coordinated with the project team and municipalities for the cost effective completion of the facilities.



Education:

B.S. in Biological Sciences –
Mississippi State University,
1994

M.S. in Biological Sciences –
Mississippi State University,
1997

Licenses & Permits:

- Gopher Tortoise Authorized Agent (GTA-0900062E)
- FDACS Commercial Applicator (CM20390)
- FDEP Qualified Stormwater Management Inspector (#947)

Professional Organizations:

- Orange County Development Advisory Board – Vice Chair
- Association of Florida Community Developers
- Central Florida Association of Environmental Professionals

Modica & Associates
302 Mohawk Road
Clermont, FL 34715
(P) 352.394.2000
eca@modica.cc

ELAINE A. IMBRUGLIA

PRESIDENT, SR. SCIENTIST

Ms. Imbruglia has over 22 years of experience in ecological consulting and scientific studies. During her career, she has worked for the private, public and non-profit sectors. Prior to her 15 years of employment with Modica & Associates, Ms. Imbruglia served as a Staff Environmental Analyst for the South Florida Water Management District (SFWMD).



Ms. Imbruglia provides expertise in Environmental Resource Permitting, comprehensive environmental planning and strategic site design. She specializes in large-scale projects, Environmental Resource Permitting, water quality monitoring, ArcGIS and geodatabase management. Other areas of expertise include Formal Wetland Determinations; Federal Dredge and Fill Permitting; Habitat Management Plans and Natural Resource Management Plans; gopher tortoise permitting and relocation; National Environmental Policy Act (NEPA) compliance; wetland functional quality assessments (UMAM, WRAP); listed species survey design, implementation and permitting through the U.S. Fish & Wildlife Service (USFWS) and the Florida Fish and Wildlife Conservation Commission (FWC); mitigation design and permitting; and Mitigation and Conservation Bank permitting.

Ms. Imbruglia serves as Vice Chair for the Orange County Development Advisory Board and is an active member of the Association of Florida Community Developers. She is an FDEP Certified Stormwater Inspector, FWC Gopher Tortoise Authorized Agent and she holds an FDACS Commercial Applicator License.

Ms. Imbruglia collaborates with interdisciplinary project team members to design innovative, responsible, and economical development plans and to secure regulatory agency approvals. She serves as a liaison between regulatory agencies and applicants during permit acquisition and resolution processes.

PROFESSIONAL EXPERIENCE:

Modica & Associates, Inc. – Clermont, Florida
President—2010 – Present
Vice President—2003 – 2009

South Florida Water Management District – Orlando, Florida
Staff Environmental Analyst—2000-2003

Ivey, Harris & Walls – Winter Park, Florida
Project Ecologist—1997-2000

The Nature Conservancy – Poinciana, Florida
Ecology Intern—1997

Waste Isolation Pilot Plant – Carlsbad, New Mexico
Environmental Intern—Summers 94-96

REPRESENTATIVE PROJECTS:

County Road 437 Realignment and Multi-Modal Study – Lake County, Florida
As a sub-consultant to the Project Engineer, Modica & Associates serves as the lead Environmental Consultant for this 4-mile roadway improvement study for Lake County's Public Works Department. Tasks performed by Ms. Imbruglia include site



Experience, Expertise, Personnel & Technical Resources



MADRID ENGINEERING GROUP, INC.
2030 State Road 60 East
Bartow, Florida 33830

JOHN E. DELASHAW, P.E., CHIEF GEOTECHNICAL ENGINEER

EDUCATION AND RESEARCH

Bachelor of Science in Civil Engineering
San Diego State University (1989)

PROFESSIONAL REGISTRATION

Registered Professional Engineer:
Florida License No. 48154
Mississippi License No. 21324

PROFESSIONAL SOCIETIES

American Society of Civil Engineers
Association of State Dam Safety Officials
Chi Epsilon (National Engineering Honor Society)

CONTINUING EDUCATION

OSHA 40-Hour Health and Safety
Deep Foundation Seminar – (1993)
Florida Dam Safety Annual Conference
1997 through 2004, 2009 (technical
presenter 1999 & 2003)
Seepage and Piping Analysis for Dams,
FDEP Dam Safety Technical Workshop –
Tampa, August 2001 (technical presenter)
ASDSO National Dam Safety Conferences
(Las Vegas, NV – '98, Tampa, FL – '02,
Hollywood, FL – '09)
Deep Foundation Institute – Seminar
Drilled Shafts (2005)
ADSC Drilled Shaft Short Course – (2005)
National Dam Safety Program -
Emergency Action Planning for Dam
Safety (2006)
GMEC - Geotechnical and Materials
Engineers Conference ('98, '01, '04, '07,
'10, '14, '16)
Numerous annual FDOT Geotechnical
Research in Progress (GRIP) Meetings
Sinkholes and the Engineering and
Environmental Impacts of Karst, 11th
Multidisciplinary Conference, 2008

PROFESSIONAL PROFILE



Mr. Delashaw currently serves as the Chief Geotechnical Engineer for Madrid Engineering Group and is the project principal and/or technical lead for most geotechnical projects performed by MEG. His primary experience includes project management and technical direction of geotechnical engineering projects, geotechnical field investigations, and analyses for numerous public and private sector clients. He is responsible for staffing and resource management and reviewing engineering evaluations for geotechnical investigations in addition to numerous subsidence investigations. He often provides expert witness testimony on forensic projects and is in responsible charge of numerous soil stabilization projects. Much of his over 27 years of geotechnical engineering experience has been gained from working on projects in the areas of: dam design and evaluation; shallow and deep foundation systems; earthworks and site development; soil improvement techniques; specialty soil sampling; sinkhole investigation, evaluation and stabilization; roadway soil surveys; pavement design; and various pipeline projects, including the use of trenchless construction technologies. Other project experience includes management of Quality Assurance/Quality Control activities, resolution of construction issues associated with geotechnical-related challenges, civil and stormwater design, and surface water hydrology. Predominant project experience includes projects throughout the state of Florida but he has worked on projects in Guam, Puerto Rico, Hawaii, California, and Mississippi.

PROJECT EXPERIENCE

Geotechnical investigations, foundation analysis and design recommendations, pavement design, seepage and slope stability analyses for dam design, soil improvement recommendations, etc. for numerous public and private sector clients. Geotechnical Engineer of Record for hundreds of subsidence investigations and stabilization projects performed primarily for the insurance industry. Forensic investigations and expert witness testimony.

REPRESENTATIVE PROJECTS

- Mulberry Fire Station and Concession Stand, Mulberry, Florida
- Loughman Fire Rescue Station, Loughman, Florida
- Mulberry WTP storage tank, Mulberry, FL
- Haines City Wastewater Treatment Facility New 5MG Storage Tank and RIB, Haines City, Florida



Leigh Ann Lunz, RLA

President, Principal Landscape Architect

llunz@dirtgardendesign.com

922 Fairlington Drive, Lakeland FL 33813

863.450.8322

Education:

Bachelor of Science in Landscape Architecture - Purdue University

Associate in Horticulture - Purdue University

Years of Professional Experience:

10 Years with Dirt

15 Years in all aspects of Landscape Architecture

Current Registration:

Florida Registered Landscape Architect #LA6667086

Leigh Ann Lunz is a registered landscape architect with over 15 years of extensive experience in landscape design, master site planning, and urban design. Over the course of her career, she has worked on many project types such as force protection, streetscapes, park design, academic campuses, and community design and master planning. She combines an extensive knowledge and passion of plant materials and for the history of landscape architecture to create designs that evolve from a site's cultural and physical environment. Each design is inspired by the project's geography, ecology, and history. Leigh Ann Lunz, a principal of the firm, actively participates in all aspects of the design process including conceptual design, program analysis, design development, client presentations, construction documentation, and construction observation. She also prides herself on working closely in collaborative environments with fellow design consultants to develop interdisciplinary solutions as a member of the design and construction team.

Past Project Experience:

Haines City Fire Station – Haines City, Florida

Design services provided were for code required landscape and irrigation plans. The design met the standards of the Polk County landscape code. The design intent was a sustainable, low-maintenance, and aesthetically pleasing landscape achieved by implementing Florida friendly plants and low volume or micro irrigation. The planting design considered the users of the facility and the requirements of the Client and merge them with the requirements of Polk County.

Lakeland Fire Station #7 at Lakeland Linder Airport – Lakeland Florida

2.8 Acre Site

Project design included schematic and permit drawings to finished construction documentation for a fire station that will serve both as a community station and an Aircraft Rescue and Firefighting (ARFF) Station. The project was completed on an accelerated schedule and involved a collaborative process with all design disciplines. The plant palette was thoughtfully selected with minimal maintenance requirements, met all FAA requirements, and plants are Florida Friendly and drought tolerant.

Wildwood Fire Station – Sumter County, Florida

5.0 Acre Site

The project required landscape and irrigation permit drawings. The planting design took into account low maintenance plant selections that were drought tolerant and Florida Friendly.

Northwest Fire Station – Sumter County, Florida

5.7 Acre Site

Is the Firm a “Polk County Entity”?



The Lunz Group (Headquarters)

58 Lake Morton Dr
Lakeland, FL 33801

*31 years at current office location
14 full-time employees*

Branch Office Locations

Celebration

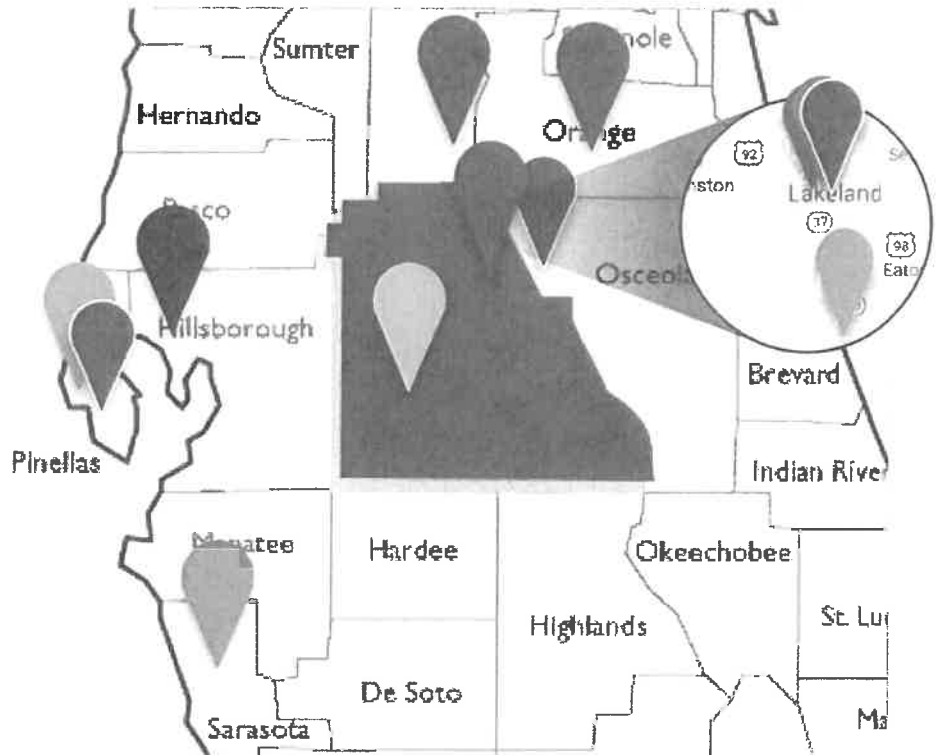
615 Celebration Ave
Celebration, FL 34747

*One year at current office location
2 full-time employees*

Dunedin

585 Main St, #201
Dunedin, FL 34698

*37 years at current office location
6 full-time employees*



Subconsultant Office Locations

Kimley-Horn

116 S Kentucky Ave,
Lakeland, FL 33801

*16 years at current office location
18 full-time employees*

Chastain-Skillman

205 E Orange St,
Lakeland, FL 33801

*68 years at current office location
44 full-time employees*

Pennoni

401 3rd St SW,
Winter Haven, FL 33880

*43 years at current office location
33 full-time employees*

DIRT

922 Fairlington Dr,
Lakeland, FL 33813

*12 years at current office location
1 full-time employee*

Madrid Engineering Group

2030 FL-60,
Bartow, FL 33830

*36 years at current office location
35 full-time employees*

OCI Associates, Inc.

4100 W Kennedy Blvd, #335
Tampa, FL 33609

*30 years at current office location
40 full-time employees*

Carlsson, Inc.

5333 N Tamiami Trail,
Sarasota, FL 34234

*26 years at current office location
5 full-time employees*

Ramski & Company, Inc.

500 Delany Ave, Suite 301
Orlando FL 32801

*28 years at current office location
9 full-time employees*

Modica & Associates

302 Mohawk Rd,
Clermont, FL 34715

*29 years at current office location
10 full-time employees*

Fullone Structural Group

600 Koger Blvd N, #227
St. Petersburg, FL 33702

*10 years at current office location
6 full-time employees*

SCN Architects *(not pictured)*

719 E. Second Ave.
Gastonia NC 28054

*47 years at current office location
20 full-time employees*

Is the Firm a "Polk County Entity"?



Proposers' Documentation of Headquarters and Local Offices

POLK COUNTY LOCAL BUSINESS TAX RECEIPT
ACCOUNT NO. 59 CLASS: B EXPIRES: 9/30/2018

OWNER NAME
 LUNZ, EDWARD G

LOCATION
 58 LAKE MORTON DR
 LAKELAND

BUSINESS NAME AND MAILING ADDRESS
 THE LUNZ GROUP
 58 LAKE MORTON DR
 LAKELAND, FL 33801-6344

CODE
 640010

ACTIVITY TYPE
 ARCHITECT

BRUCE W. BARKER TAX COLLECTOR
 POLK COUNTY, FLORIDA
 POLK COUNTY, FLORIDA

EXPIRATION DATE
 September 30, 2018

2018
 PROPERTY TAX
 COUNTY TAX
 STATE TAX
 LOCAL TAX

PROPERTY
 Parcel ID
 Parcel Value
 Parcel Label

PROPERTY
 Parcel ID
 Parcel Value
 Parcel Label

PROPERTY
 Parcel ID
 Parcel Value
 Parcel Label

PROFESSIONAL LICENSE (IF APPLICABLE)
 AAC 001880

OFFICE OF JOE G. TEDDER, CFC * TAX COLLECTOR THE POLK COUNTY LOCAL BUSINESS TAX RECEIPT MUST BE CONSPICUOUSLY DISPLAYED AT THE BUSINESS LOCATION

PAID-3204205-0001-0001 07/31/2017 07/31/2017 N66 32 57.75

CITY OF BARTOW LOCAL BUSINESS TAX RECEIPT

Receipt of a business subject to zoning restriction. The receipt of this Local Business Tax Receipt does not authorize the holder to operate in violation of any City law, ordinance or regulation. Any change in location or ownership must be approved by the City Business Tax Section, subject to zoning restrictions. This Receipt does not constitute an endorsement, approval or certification of the holder's skill or competence or of the compliance or non-compliance of the holder with other laws, regulations or standards.

Business Name: THE LUNZ GROUP, INC. **Parcel Number:** 21-01-01-0000
Local Address: 58 LAKE MORTON DR **Parcel Value:** 1,000,000.00
County of Tax: POLK COUNTY **Business Tax No.:** 19-0000188
Issue Date: August 1, 2018 **Expiration Date:** August 31, 2018
CDTB: 4-30-01-00 12-31-19
CDTB: 01-01-00
Business Fee: 0.00
Tax: 0.00
Community: WOODLIS 655E 12045 NCR 12045

Sub-consultants' Documentation of Local Offices

CITY OF LAKELAND

BUSINESS TAX RECEIPT

Business Tax Office, 328 S Massachusetts Ave., Lakeland, FL 33801

Expires on: 9/30/2019

Account Number: 1374081
Workers: 0
Square Footage: 0
Fee: \$121.50
Location Address:
 922 FARRINGTON DR
 LAKELAND, FL 33853

This business tax receipt does not permit the holder to operate in violation of any City law, ordinance or regulation. Any change in location or ownership must be approved by the City Business Tax Section, subject to zoning restrictions. This Receipt does not constitute an endorsement, approval or certification of the holder's skill or competence or of the compliance or non-compliance of the holder with other laws, regulations or standards.

Business Name & Mailing Address
 DKT
 URBAN JAMES LLC
 1818 JIM LORCE, OWNER
 922 FARRINGTON DR
 LAKELAND, FL 33853

Joe G. Tedder

RECEIPT MUST BE CONSPICUOUSLY DISPLAYED IN YOUR PLACE OF BUSINESS

VALID ONLY WHEN SIGNED

POLK COUNTY LOCAL BUSINESS TAX RECEIPT

ACCOUNT NO. 1289

CLASS: B

LOCATION

EXPIRES: 9/30/2018

OWNER NAME
 LARRY DEAN MADRID

2030 HWY 60 E
 BARTOW

BUSINESS NAME AND MAILING ADDRESS

CODE

ACTIVITY TYPE

MADRID ENGINEERING GROUP INC
 2030 HWY 60 E
 BARTOW, FL 33830-4266

640190

PROFESSIONAL ENGINEER

PROFESSIONAL LICENSE (IF APPLICABLE)
 PE 9038668

OFFICE OF JOE G. TEDDER, CFC * TAX COLLECTOR

THE POLK COUNTY LOCAL BUSINESS TAX RECEIPT MUST BE CONSPICUOUSLY DISPLAYED AT THE BUSINESS LOCATION

PAID-1205576-0001-0001 08/30/2018 08/08/2018 N66 32 57.75



CITY OF LAKELAND

BUSINESS TAX RECEIPT

Business Tax Office, 328 S Massachusetts Ave., Lakeland, FL 33801

Expires on: 9/30/2019

Account Number: 1394823
Workers: 0
Square Footage: 0
Fee: \$121.50
Location Address:
 115 S KENTUCKY AV
 LAKELAND, FL 33801

This business tax receipt does not permit the holder to operate in violation of any City law, ordinance or regulation. Any change in location or ownership must be approved by the City Business Tax Section, subject to zoning restrictions. This Receipt does not constitute an endorsement, approval or certification of the holder's skill or competence or of the compliance or non-compliance of the holder with other laws, regulations or standards.

Business Name & Mailing Address
 MARK E WILSON
 % KIMLEY HORN AND ASSOCIATES INC
 115 S KENTUCKY AV
 LAKELAND, FL 33801

Joe G. Tedder

RECEIPT MUST BE CONSPICUOUSLY DISPLAYED IN YOUR PLACE OF BUSINESS

VALID ONLY WHEN SIGNED

POLK COUNTY LOCAL BUSINESS TAX RECEIPT

ACCOUNT NO. 2684

CLASS: B

LOCATION

EXPIRES: 9/30/2018

OWNER NAME
 CHESTER, JAMES R

4705 OLD HIGHWAY 27
 LAKELAND

BUSINESS NAME AND MAILING ADDRESS

CODE

ACTIVITY TYPE

CHAMBER-SOLLIMAN INC
 P O BOX 6710
 LAKELAND, FL 33807-6710

640190

PROFESSIONAL ENGINEER
 LTD PUBLIC SERVICE

PROFESSIONAL LICENSE (IF APPLICABLE)
 14277

OFFICE OF JOE G. TEDDER, CFC * TAX COLLECTOR

THE POLK COUNTY LOCAL BUSINESS TAX RECEIPT MUST BE CONSPICUOUSLY DISPLAYED AT THE BUSINESS LOCATION

PAID-3204476-0001-0001 08/03/2017 08/03/2017 N66 32 335.50



POLK COUNTY LOCAL BUSINESS TAX RECEIPT

ACCOUNT NO. 2585

CLASS: B

EXPIRES: 9/30/2019

OWNER NAME
 PENNOR ASSOCIATES INC

LOCATION
 401 SW 3RD ST
 WINTER HAVEN

BUSINESS NAME AND MAILING ADDRESS

CODE

ACTIVITY TYPE

PENNOR ASSOCIATES INC
 401 SW 3RD ST
 WINTER HAVEN, FL 33880-3412

640190

PROFESSIONAL ENGINEER

PROFESSIONAL LICENSE (IF APPLICABLE)
 2120

OFFICE OF JOE G. TEDDER, CFC * TAX COLLECTOR

THE POLK COUNTY LOCAL BUSINESS TAX RECEIPT MUST BE CONSPICUOUSLY DISPLAYED AT THE BUSINESS LOCATION

PAID-3204722-0001-0001 07/31/2018 07/30/2018 MHM 32 57.75



Is the Firm a "Polk County Entity"?



Sub-consultants' Documentation of Headquarters / Offices

BUSINESS TAX RECEIPT

CITY OF LONGWOOD
175 W. WARREN AVENUE
LONGWOOD, FL 32750

2018-2019

Phone: (407) 260-3440
http://www.longwoodfl.com

Package #: 19-01193
Issued Date: 09/30/18
Expiration Date: 09/30/19

License Type: ADMIN/AGENCY OFFICE/1 TO 5 EMP

Business Name: CARLSSON CONSTRUCTION ESTIMATE

Business Location: 1016 SAVAGE CT
ANITA FROUT
1000 SAVAGE CT
STE 100
LONGWOOD, FL 32750

RECEIPT MUST BE CONSPICUOUSLY DISPLAYED AT BUSINESS LOCATION.

CITY OF MAITLAND, 1776 INDEPENDENCE LANE, MAITLAND, FL 32753

LOCAL BUSINESS TAX RECEIPT # 4882

EFFECTIVE: 10/01/17 EXPIRATION: 09/30/18

LOCATION: 600 S ORLANDO AVE #100
OCI ASSOCIATES INC

CATEGORY: BUSINESS
TYPE: SERVICES; ENGINEER/ACCOUNTING/MANAGEMENT

The person, firm, or corporation named above is hereby granted this receipt for fees paid to the City of Maitland for the business described above for the period indicated. Granting of this receipt does not entitle the holder to operate or maintain a business in violation of law or ordinance. The City of Maitland does not guarantee the qualifications of the holder of this receipt.

POST IN A CONSPICUOUS PLACE

NOT VALID UNLESS SIGNED BY CITY OFFICIAL

POST IN A CONSPICUOUS PLACE

Clermont, FL
LOCAL BUSINESS TAX

Receipt Number: 584

THIS RECEIPT EXPIRES 09/30/2018

Business Name: MODICA & ASSOCIATES Business Location: 302 MOHAWK RD

Mailing Address: MODICA & ASSOCIATES, INC
MBAUGLIA, ELAINE
302 MOHAWK RD
CLERMONT, FL 34711

BUSINESS TAX RECEIPT

This tax receipt does not permit the holder to operate in violation of any City law, ordinance or regulation. Any change in location or ownership must be approved by the City, subject to zoning restrictions. This tax receipt does not constitute an endorsement, approval or disapproval of the holder's skill or competence.

Business: DESIGNING/CONSULTING FIRM

By: *[Signature]*
City Clerk

Total Received: **PAID**

CLERMONT
Choice of Champions

2017 - 2018

CITY OF ORLANDO
PERMITTING SERVICES

Local Business Tax Receipt

(Formerly known as "Business License" changed per state law HB 1269-2008)

Business Name: RAMSKI & COMPANY INC
500 DELANEY AVE
SUITE 301
ORLANDO, FL 32801

Business Owner: RAMSKI & COMPANY INC

Business Location: 500 DELANEY AVE 301

NOTICE: THIS TAX RECEIPT ONLY EVIDENCES PAYMENT OF THE LOCAL BUSINESS TAX PURSUANT TO CH 209, FLORIDA STATUTES. IT DOES NOT PERMIT THE HOLDER TO OPERATE IN VIOLATION OF ANY CITY, STATE, OR FEDERAL LAW. CITY PERMITTING MUST BE NOTIFIED OF ANY MATERIAL CHANGE TO THE INFORMATION FOUND HEREIN BELOW. THIS RECEIPT DOES NOT CONSTITUTE AN ENDORSEMENT OR APPROVAL OF THE HOLDER'S SKILL OR COMPETENCY.

Receipt Number: BUS-0049020

Issue Date: 09/24/2017

Expiration Date: 9/30/2018

Business Type(s): PROFESSIONAL FIRM/OFFICE

Description: PROFESSIONAL FIRM/OFFICE

Year: 2018

#OrlandoUnited

CITY OF ST. PETERSBURG, FLORIDA
LOCAL BUSINESS TAX RECEIPT

ACCOUNT NO: 76679 DATE: August 25, 2017

2018
EXPIRES 9/30/2018

BUSINESS: FULLONE STRUCTURAL GROUP INC

9690 KOGER BLVD 237
SAINT PETERSBURG, FL 33702

18-00021-470 DESCRIPTION OF OCCUPATION, PROFESSION, OR BUSINESS: ENGINEER

65.00

Due to Hurricane Florence impacting the state of North Carolina, **SCN Architects** was not able to provide a recent copy of business tax receipt at this time. They will, however, be able to provide a copy upon award as needed.

Is the Firm a "Certified Woman or Minority Business Enterprise"?



Proposers' Documentation of WMBE Status

The Lunz Group is not a certified Minority/Woman Business Enterprise. We will work with Polk County to reach a MBE / WMBE goal when choosing subcontractors. We are, however, a Small Business Enterprise.

Sub-consultants' Documentation of WMBE Status

Kimley-Horn, Pennoni, Chastain-Skillman, OCI Associates, Fullone Structural Group and SCN Architects are not certified Minority/Woman Business Enterprises. Below are the certifications for our consultants who are WMBE-certified through the programs recognized by Polk County:

State of Florida

Minority Business Certification

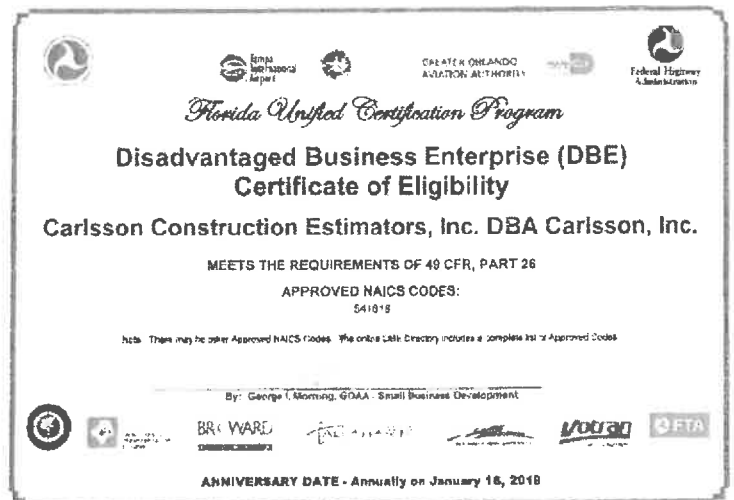
Madrid Engineering Group Inc

Is certified under the provisions of 287 and 295.187, Florida Statutes, for a period from:

10/11/2017 to 10/11/2019


Eric Ricks, Secretary
Florida Department of Management Services
office of supplier diversity

Office of Supplier Diversity - 4050 Esplanade Way, Suite 380 • Tallahassee, FL 32399 • 850-487-0915 • www.dms.ny/florida.com/od



State of Florida

Woman Business Certification

Ramski & Company, Inc.

Is certified under the provisions of 287 and 295.187, Florida Statutes, for a period from:

04/19/2017 to 04/19/2019


Chris Trapp, Secretary
Florida Department of Management Services
office of supplier diversity

Office of Supplier Diversity - 4050 Esplanade Way, Suite 380 • Tallahassee, FL 32399 • 850-487-0915 • www.dms.ny/florida.com/od

MODICA & ASSOCIATES FDOT DBE CERTIFICATION 2018

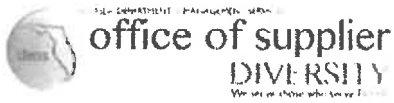
Number of Records Returned: 1
Selection Criteria:
Vendor: MODICA & ASSOCIATES INC

Vendor Name: MODICA & ASSOCIATES INC
DBE Certification: CERTIFIED
MBE Certification:
DBA: Former Name:
Business Description: ECOLOGICAL CONSULTING; WETLAND DELINEATION/ERP PERMITTING AND WETLAND IMPACT PERMITTING/FEDERAL/STATE AND LOCAL; LISTED SPECIES SURVEYS/PERMITTING AND RELOCATION; MITIGATION DESIGN/CONSTRUCTION AND MONITORING
Mailing Address: 302 MOHAWK RD
C.ERMONT, FL 34715
Contact Name: ELAINE A IMBRUGILA
Email: EA@MODICA.CO
Phone: (352) 394-2000 Fax: (352) 394-1159
Statewide Availability: Y
ACDBE Status: N
Certified NAICS
541620 Environmental Consulting Services

Is the Firm a “Certified Woman or Minority Business Enterprise”?



Dirt



Urban Jungle, LLC

[Back to Certified Directory](#)

[Profile](#) [Commodity Code](#)

Name: Urban Jungle, LLC
Shortname: dirt
Business Designation: partnership-joint venture
Contact: Leigh Ann Lunz
Address: 922 Fairington Drive
Lakeland, FL 33813
County: Polk
Phone: 883-450-6322
Fax:
Email: info@urbanjunglellc.com

Designations

WOMAN OWNED: September 12, 2018 - September 12, 2020

Interaction with County and Regulatory Agency Staff



Our Team's Interaction with Polk County

The Lunz Group's 25 year working relationship with the County has given us the knowledge and experience in working with our local regulatory agencies. The majority of our staff live in the County - it is literally where we live, work and play. Because of this, we are fully invested in each and every project we take on with the County, going beyond just providing our services, but engaging and participating in a project that has a long-term vision for our community.

Each of our local team member's offices are located within an hour and a half of Polk County. The Lunz Group is headquartered in Polk County and has been since the firm's founding in 1987. In fact, **more than half of our team is located within County limits**. Because of our locality, we are accessible for staff meetings and work sessions on short notice, as well as offer knowledge of local conditions. We effectively achieve your objectives by designing a solution that works best for your needs.



Our Team's Interaction with Regulatory Agency Staff

Our team has the experience and working relationships within the County as it relates to the several aspects of a project, including permitting, construction, applications, consultation, governing regulations, SWFWMD and more. We consider ourselves to be an extension of the municipality's staff and are committed to the success of the projects we take on. In addition to our local knowledge, many of our team members are former municipal engineers, designers and planners, bringing industry experience that is unparalleled.

Our team's combined municipal experience in consultation, design, administration, permitting, governing regulations and construction phase services gives us the specific understanding of how to work with our regulatory agencies, facilities management, department divisions, elected officials and stakeholders, as well as the local community. Our attention to detail and ability to fast-track submission often means much less time in the permitting process - meaning a quicker project start-up for construction.

Timely Completion of Projects



Current and Future Workload and Capacity

At The Lunz Group, we have a proven track record of completing projects on or ahead of schedule and at or under budget. Our team takes pride in exceeding client expectations and understands the absolute necessity for facilities to come “on-line” when scheduled.

Our team’s extensive experience with fire stations has provided us with a thorough understanding of the special needs and services that are typical for working on these types of projects within municipal departments. Our seamless approach utilizes the entire team, including the client throughout every stage of the project. We understand the need for scheduling and how to work with various review boards and multiple departments.

We understand the needs of this project will be labor intensive in the beginning, utilizing our team’s capacity to be able to design a prototype station that will be able to be repurposed for the next 20 years. Throughout the project’s duration, we are able to attend to your specific needs, day or night. Our team is committed to the long-term success of this project and will be available for the duration of the prototype’s lifetime.

We are able to begin working immediately on the project needs for Polk County.

22 TEAM MEMBERS

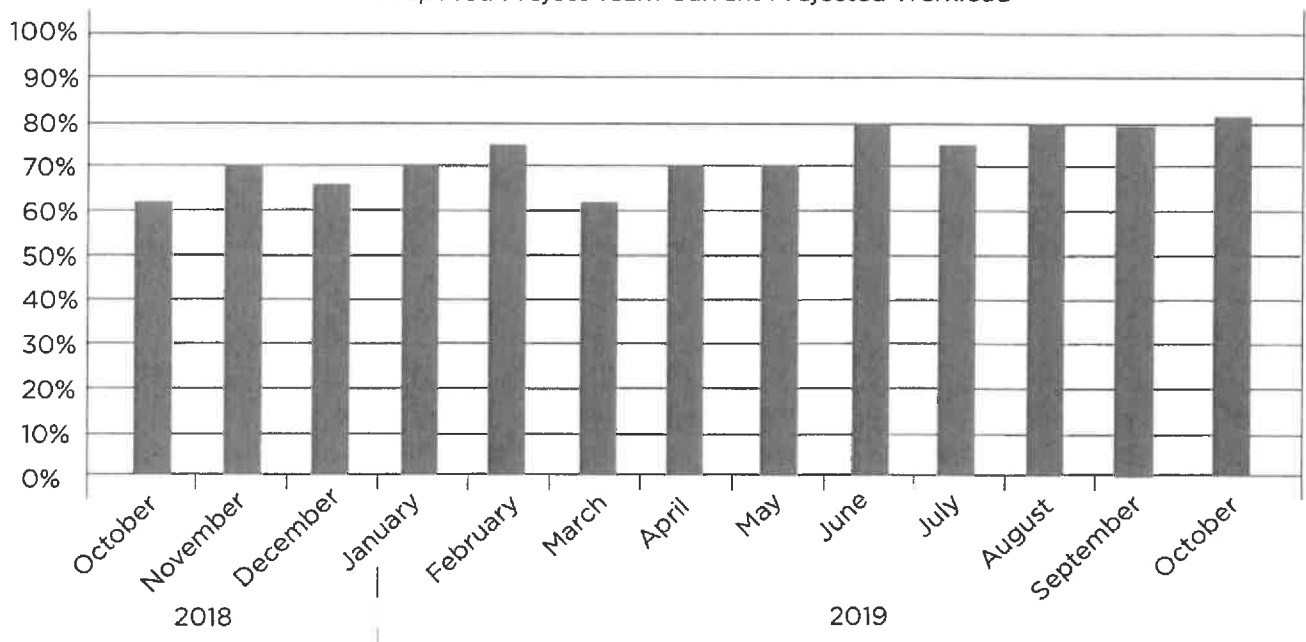
145 COUNTY RESIDENTS ON TEAM

45 MINUTES
AVERAGE COMMUTE TIME FOR TEAM MEMBERS

60% DAILY TEAM MEMBER UTILIZATION*

* Can operate at 70% utilization for onset of project.

Proposed Project Team Current Projected Workload



Surveys of Past Performance



**Survey Questionnaire – Polk County
RFP 18-1025, Professional Architectural / Engineering Services for a New Prototype Fire
Rescue Station**

To: Steve McMillan Polk County
(Name of Person completing survey) (Name of Client Company/Firm)

Phone Number: 863-534-5527

Email: stevemcmillan@polk-county.net

Subject: Past Performance Survey of:

Marion Creek Fire Station

(Project Name)

Consultant Name: The Lunz Group (formerly Lunz Prebor Fowler Architects)
(Name of firm being surveyed)

Cost of Services: \$124,850.00 Date Complete: N/A 2015

Rate each of the criteria on a scale of 1 to 10, with 10 representing that you were very satisfied (and would hire the firm/individual again) and 1 representing that you were very unsatisfied (and would never hire the firm/individual again). Please rate each of the criteria to the best of your knowledge. If you do not have sufficient knowledge of past performance in a particular area, leave it blank.

NO	CRITERIA	UNIT	SCORE
1	Ability to maintain project schedule (complete on-time/early)	(1-10)	10
2	Professionalism and ability to manage	(1-10)	10
3	Close out process	(1-10)	10
4	Ability to communicate with Client's staff	(1-10)	10
5	Ability to resolve issues promptly	(1-10)	10
6	Ability to follow protocol	(1-10)	10
7	Ability to maintain proper documentation	(1-10)	10
8	Appropriate application of technology	(1-10)	10
9	Overall Client satisfaction and comfort level in hiring	(1-10)	10
10	Ability to offer solid recommendations	(1-10)	10

Steve McMillan
Printed Name of Evaluator

Steve McMillan 12/27/16
Signature of Evaluator

Please fax or email the completed survey to: lcant.ore@lunz.com

Surveys of Past Performance



**Survey Questionnaire – Polk County
RFP 18-1025, Professional Architectural / Engineering Services for a New Prototype Fire Rescue
Station**

To: Rick Hartzog
(Name of Person completing survey)

City of Lakeland Fire Department
(Name of Client Company/Firm)

Phone Number: (863) 834-8200

Email: Rick.Hartzog@lakelandgov.net

Subject: Past Performance Survey of:

Lakeland Fire Station #7 / ARFF

(Project Name)

Consultant Name: The Lunz Group, Inc.
(Name of firm being surveyed)

Cost of Services: \$653,590

Date Complete: Spring 2017

Rate each of the criteria on a scale of 1 to 10, with 10 representing that you were very satisfied (and would hire the firm/individual again) and 1 representing that you were very unsatisfied (and would never hire the firm/individual again). Please rate each of the criteria to the best of your knowledge. If you do not have sufficient knowledge of past performance in a particular area, leave it blank.

NO	CRITERIA	UNIT	SCORE
1	Ability to manage cost	(1-10)	10
2	Ability to maintain project schedule (complete on-time/early)	(1-10)	10
3	Quality of workmanship	(1-10)	10
4	Professionalism and ability to manage	(1-10)	10
5	Close out process	(1-10)	10
6	Ability to communicate with Client's staff	(1-10)	10
7	Ability to resolve issues promptly	(1-10)	10
8	Ability to follow protocol	(1-10)	10
9	Ability to maintain proper documentation	(1-10)	10
10	Appropriate application of technology	(1-10)	10
11	Overall Client satisfaction and comfort level in hiring	(1-10)	10
12	Ability to offer solid recommendations	(1-10)	10

Rick Hartzog

Printed Name of Evaluator

[Signature]
Signature of Evaluator

Please fax or email the completed survey to: mross@lunz.com

Surveys of Past Performance



**Survey Questionnaire – Polk County
RFP 18-1025, Professional Architectural / Engineering Services for a New Prototype Fire
Rescue Station**

To: Steve McMillan Polk County
(Name of Person completing survey) (Name of Client Company/Firm)

Phone Number: 863-534-5527

Email: stevemcmillan@polk-county.net

Subject: Past Performance Survey of:

Mulberry Fire Station and Concession Stand

(Project Name)

Consultant Name: The Lunz Group (formerly Lunz Prebor Fowler Architects)

(Name of firm being surveyed)

Cost of Services: \$179,384.00

Date Complete: N/A 5/16

Rate each of the criteria on a scale of 1 to 10, with 10 representing that you were very satisfied (and would hire the firm/individual again) and 1 representing that you were very unsatisfied (and would never hire the firm/individual again). Please rate each of the criteria to the best of your knowledge. If you do not have sufficient knowledge of past performance in a particular area, leave it blank.

NO	CRITERIA	UNIT	SCORE
1	Ability to maintain project schedule (complete on-time/early)	(1-10)	10
2	Professionalism and ability to manage	(1-10)	10
3	Close out process	(1-10)	10
4	Ability to communicate with Client's staff	(1-10)	10
5	Ability to resolve issues promptly	(1-10)	10
6	Ability to follow protocol	(1-10)	10
7	Ability to maintain proper documentation	(1-10)	10
8	Appropriate application of technology	(1-10)	10
9	Overall Client satisfaction and comfort level in hiring	(1-10)	10
10	Ability to offer solid recommendations	(1-10)	10

Steve McMillan
Printed Name of Evaluator

Steve McMillan 12/27/16
Signature of Evaluator

Please fax or email the completed survey to: lcant.ore@lunz.com

* CONSTRUCTION PHASE ONGOING. EMC

Surveys of Past Performance



**Survey Questionnaire – Polk County
RFP 18-1025, Professional Architectural / Engineering Services for a New Prototype Fire
Rescue Station**

To: Bradley Arnold _____ Sumter County Board of County Commissioners
 (Name of Person completing survey) (Name of Client Company/Firm)

Phone Number: 352-689-4400 _____

Email: bradley.arnold@sumtercountyfl.gov _____

Subject: Past Performance Survey of:

Sumter County Fire Station No. 11 _____
 (Project Name)

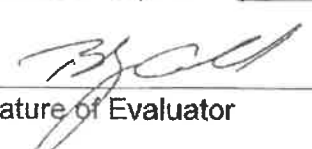
Consultant Name: The Lunz Group (formerly Lunz Prebor Fowler Architects) _____
 (Name of firm being surveyed)

Cost of Services: \$149,682.00 _____ Date Complete: DECEMBER 2016

Rate each of the criteria on a scale of 1 to 10, with 10 representing that you were very satisfied (and would hire the firm/individual again) and 1 representing that you were very unsatisfied (and would never hire the firm/individual again). Please rate each of the criteria to the best of your knowledge. If you do not have sufficient knowledge of past performance in a particular area, leave it blank.

NO	CRITERIA	UNIT	SCORE
1	Ability to maintain project schedule (complete on-time/early)	(1-10)	10
2	Professionalism and ability to manage	(1-10)	10
3	Close out process	(1-10)	10
4	Ability to communicate with Client's staff	(1-10)	10
5	Ability to resolve issues promptly	(1-10)	10
6	Ability to follow protocol	(1-10)	10
7	Ability to maintain proper documentation	(1-10)	10
8	Appropriate application of technology	(1-10)	10
9	Overall Client satisfaction and comfort level in hiring	(1-10)	10
10	Ability to offer solid recommendations	(1-10)	10

Bradley Arnold _____
 Printed Name of Evaluator


 Signature of Evaluator

Please fax or email the completed survey to: lcantone@lunz.com

Survey Questionnaire – Polk County

RFP 18-1025, Professional Architectural / Engineering Services for a New Prototype Fire Rescue Station

Pleasant Valley Fire Department

To: Greg Nicholson (Name of Person completing survey) Stewart Cooper Newell (Name of Client Company/Firm)

Phone Number: 803-804-5668

Email: gnicholson@pvfd14.org

Subject: Past Performance Survey of:
Pleasant Valley Fire Department (Project Name)

Consultant Name: Stewart Cooper Newell (Name of firm being surveyed)

Cost of Services: _____ Date Complete: Feb. 2010

Rate each of the criteria on a scale of 1 to 10, with 10 representing that you were very satisfied (and would hire the firm/individual again) and 1 representing that you were very unsatisfied (and would never hire the firm/individual again). Please rate each of the criteria to the best of your knowledge. If you do not have sufficient knowledge of past performance in a particular area, leave it blank.

NO	CRITERIA	UNIT	SCORE
1	Ability to maintain project schedule (complete on-time/early)	(1-10)	10
2	Professionalism and ability to manage	(1-10)	10
3	Close out process	(1-10)	10
4	Ability to communicate with Client's staff	(1-10)	10
5	Ability to resolve issues promptly	(1-10)	10
6	Ability to follow protocol	(1-10)	10
7	Ability to maintain proper documentation	(1-10)	10
8	Appropriate application of technology	(1-10)	10
9	Overall Client satisfaction and comfort level in hiring	(1-10)	10
10	Ability to offer solid recommendations	(1-10)	10

Greg Nicholson Printed Name of Evaluator  Signature of Evaluator

Please fax or email the completed survey to: _____