

RESOLUTION NO.: \_\_\_\_\_

**WHEREAS**, the Polk County Roads & Drainage Division, conducted parking studies on the following County-maintained Local Residential road:

Glenco Drive (Road Number 562528); from Dead End West to Dead End East, Located in S-25, T-25S, R-26E, and

**WHEREAS**, said studies were made in accordance with the procedures established by the State of Florida Department of Transportation, and said studies verified that the parking of vehicles in this location creates navigability concerns, and

**WHEREAS**, under the laws of the State of Florida, the Board of County Commissioners is vested with the authority to restrict parking on County maintained roads.

**NOW, THEREFORE, BE IT RESOLVED** that the Polk County Roads & Drainage Division is herewith directed to cause Glenco Drive to be posted “No Parking, Stopping or Standing” on the west side of the cul-de-sac at Dead End West.

DATED this 6<sup>th</sup> day of February 2024.

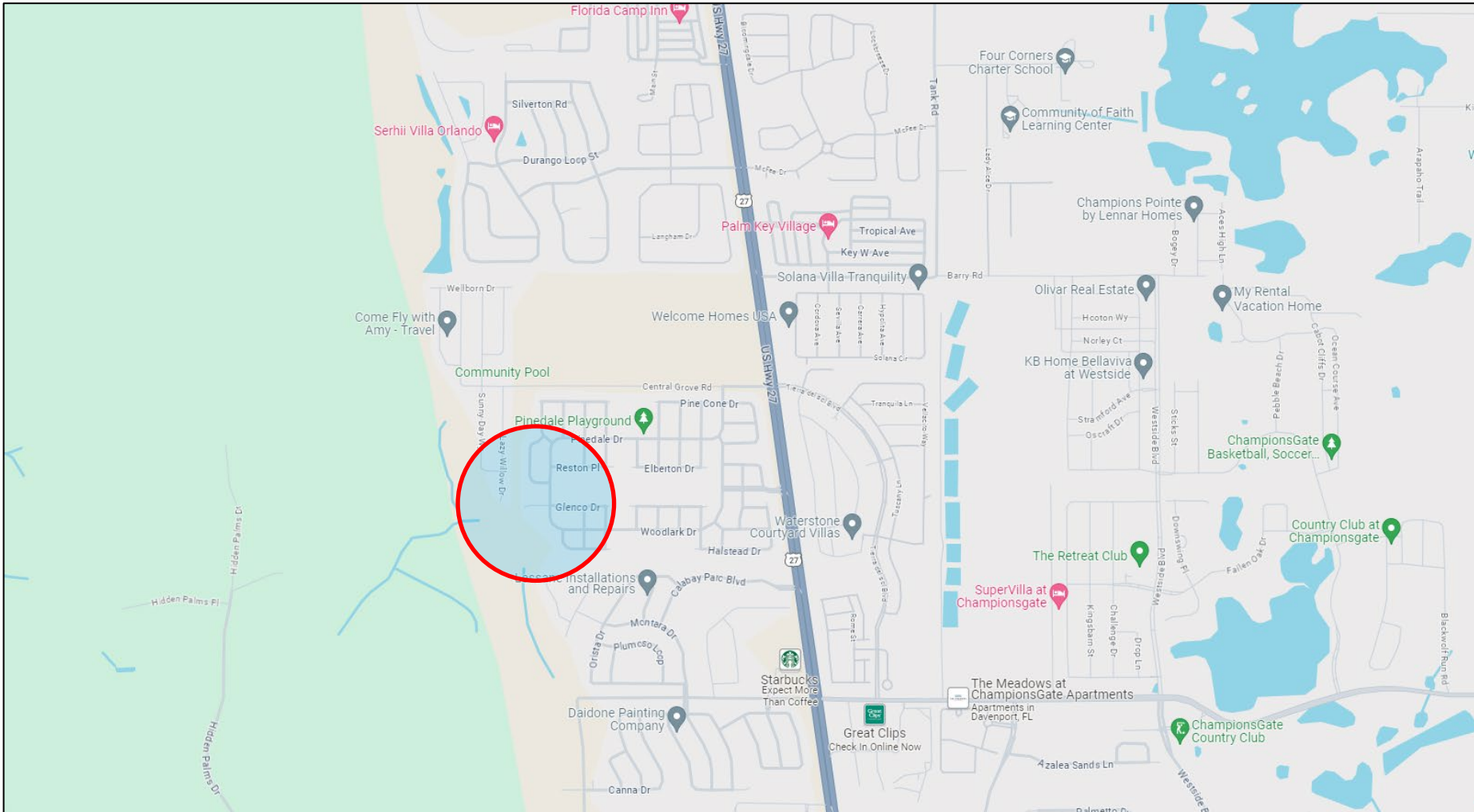


N.T.S.

# Glenco Dr (Davenport Area)

Request for Parking Restrictions

Vicinity Map



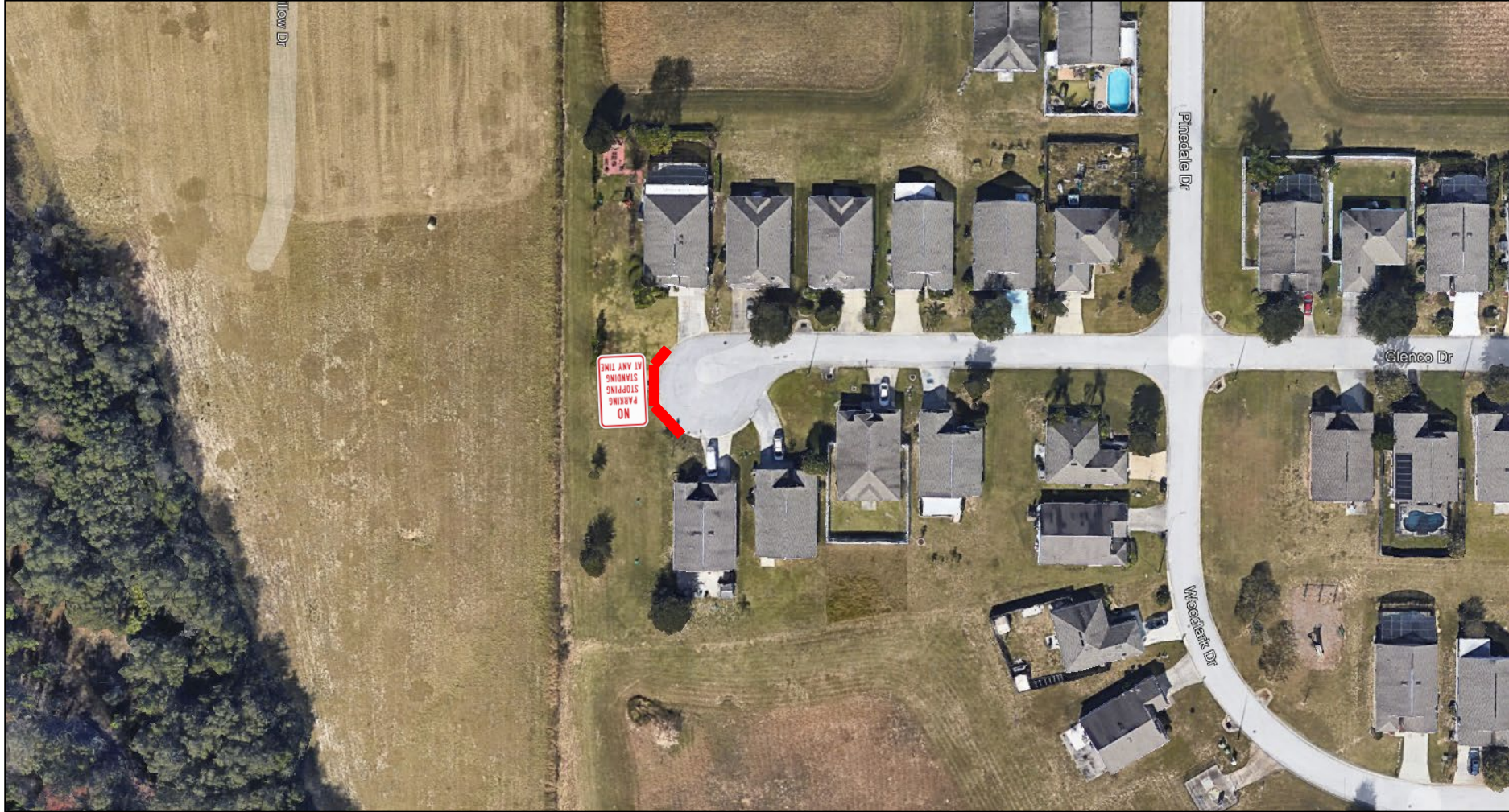
N



N.T.S.

# Glenco Dr (Davenport Area)

Request for Parking Restrictions





**POLK COUNTY ROADS & DRAINAGE DIVISION  
NO PARKING, STOPPING OR STANDING REQUEST**

**ROAD DESCRIPTION**

<b>Name</b>	Glenco Drive		<b>Number</b>	562528	
<b>Section</b>	25	<b>Township</b>	28 S	<b>Range</b>	25 E
<b>Commission District</b>	4	<b>Maintenance Unit</b>	R4	<b>Functional Classification</b>	LR
<b>From</b>	Dead End West	<b>Node</b>	N/A	<b>Mile Post</b>	N/A
<b>To</b>	Dead End East	<b>Node</b>	N/A	<b>Mile Post</b>	N/A

**REASON FOR RESOLUTION**

<b>Customer Service Request #</b>	N/A	<b>Internal Request</b>		<b>External Request</b>	✓
<b>External Agency Name (If Applicable)</b>					
<b>Problem Statement:</b> Area resident requests parking restriction due to navigability issues being caused by the parking of vehicles.					

**REQUEST FOR POSTING**

<b>No Parking</b>	✓	<b>No Stopping</b>	✓	<b>No Standing</b>	✓
<b>Direction of road</b>	East-West	<b>Findings:</b>			
<b>Which side of road</b>	West	Roads & Drainage has verified that the parking of vehicles in this area creates potential navigability concerns. Recommend signs be posted restricting parking on the west end of the cul-de-sac at Dead End West.			
<b>Distance in feet</b>	80				

**PICTURES OF LOCATION**



<b>Review conducted by</b>	Steve Logan	<b>Date</b>	1/17/2024
<b>Entered by</b>	Steve Logan	<b>Date</b>	1/17/2024
<b>Concurred/authorized by Traffic Manager</b>	Amy J. Gregory, P.E.	<b>Date</b>	1/18/2024

**Signature**  
