

RESOLUTION NO.: _____

WHEREAS the Board of County Commissioners has a policy to allow for the placement of traffic calming devices upon certain qualifying roads, and

WHEREAS the Polk County Roads & Drainage Division was requested to install traffic calming devices on the following County-maintained Local Residential road:

Camp Gilead Drive (Road Number 653302); from State Road 559 to State Road 559. Located in S-33, T-26S, R-25E, and

WHEREAS speed studies were performed in accordance with the procedures established by the State of Florida Department of Transportation, and said studies verified that Camp Gilead Drive qualifies for traffic calming devices based on 85th Percentile speed and traffic volume, and

WHEREAS homeowners along Camp Gilead Drive were provided with ballot forms, and a sufficient number of said forms were either returned in support of the installation of traffic calming devices, or were not returned and counted as being in support of the installation of traffic calming devices, in accordance with Board policy requirements,

NOW, THEREFORE, BE IT RESOLVED that the Polk County Roads & Drainage Division is herewith directed to cause Camp Gilead Drive to have four traffic calming devices installed between State Road 559 and State Road 559.

DATED this 6th day of February 2024.

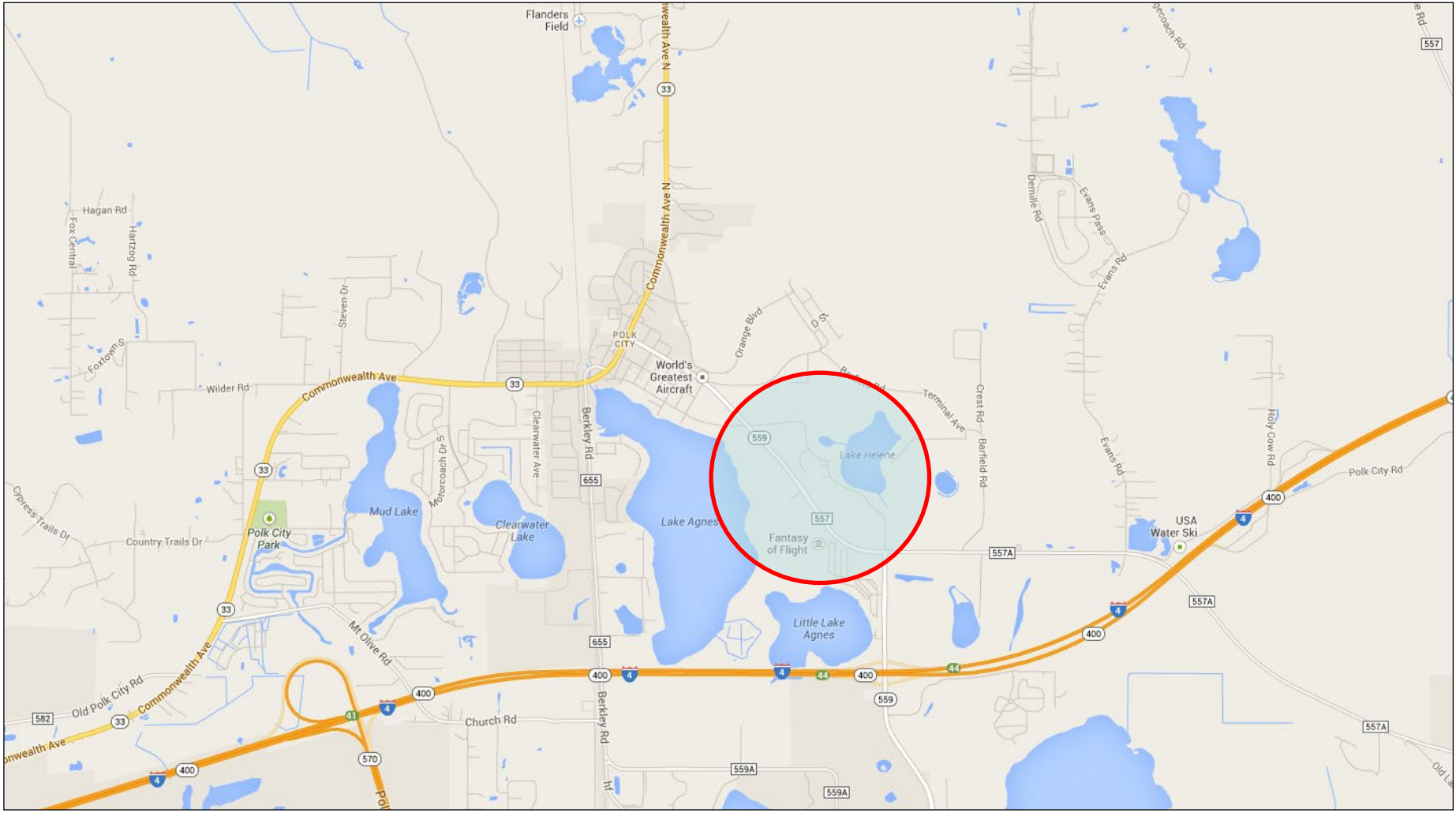


N.T.S.

Camp Gilead Dr (Polk City Area)

Request for Traffic Calming Devices

Vicinity Map



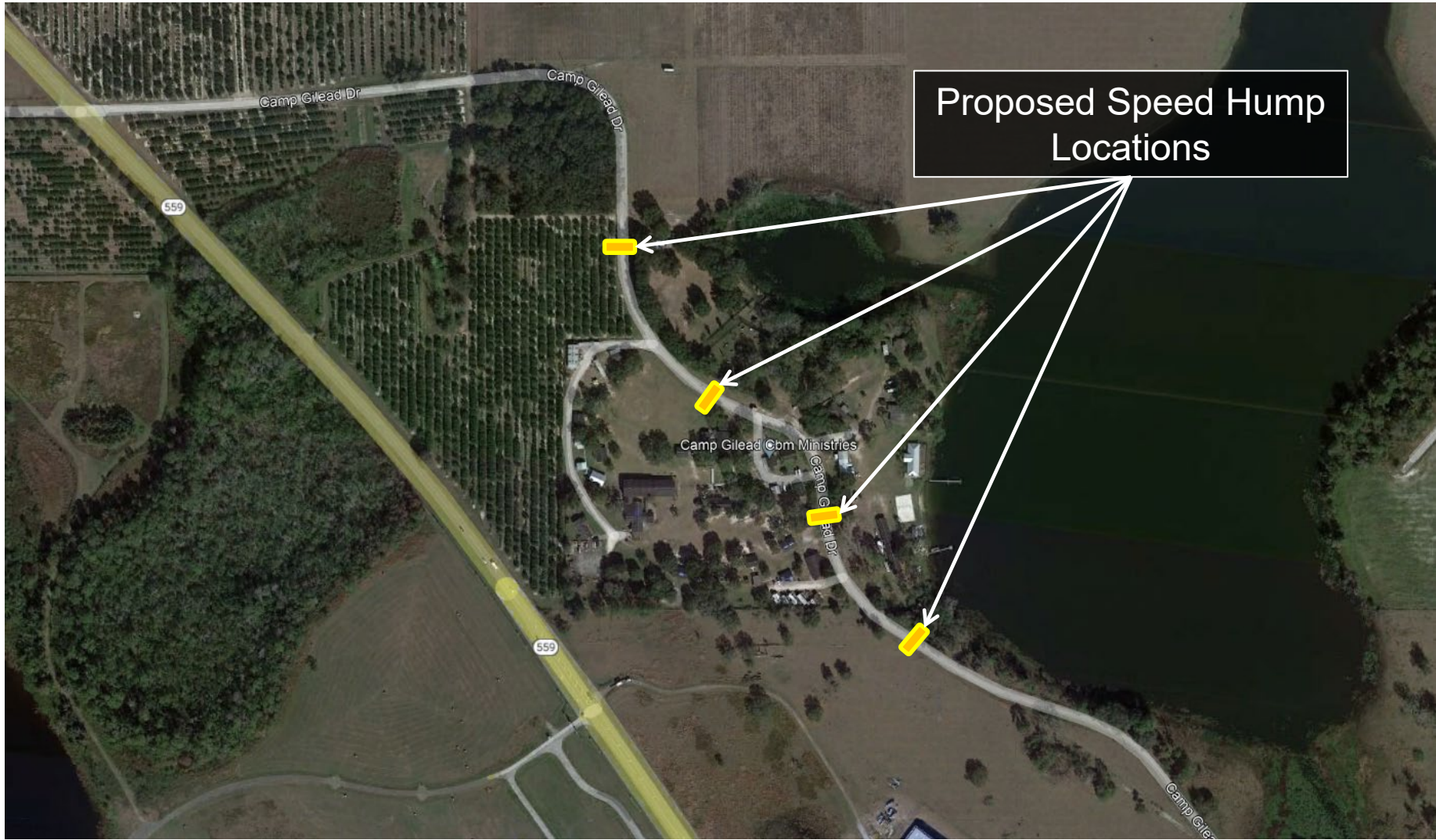
N



N.T.S.

Camp Gilead Dr (Polk City Area)

Traffic Calming Plan



Proposed Speed Hump Locations

