

RESOLUTION NO.: _____

WHEREAS, the Polk County Roads & Drainage Division, conducted parking studies on the following County-maintained Local Residential road:

Dons Court (Road Number 841627); from Dons Place to County Road 542 (Main Street East), Located in S-16, T-28S, R-24E, and

WHEREAS, said studies were made in accordance with the procedures established by the State of Florida Department of Transportation, and said studies verified that the parking of vehicles in this location creates navigability concerns, and

WHEREAS, under the laws of the State of Florida, the Board of County Commissioners is vested with the authority to restrict parking on County maintained roads.

NOW, THEREFORE, BE IT RESOLVED that the Polk County Roads & Drainage Division is herewith directed to cause Dons Court to be posted "No Parking, Stopping or Standing" on the east side from 175 feet south of County Road 542 (Main Street East) to County Road 542 (Main Street East).

DATED this 1st day of July 2025.

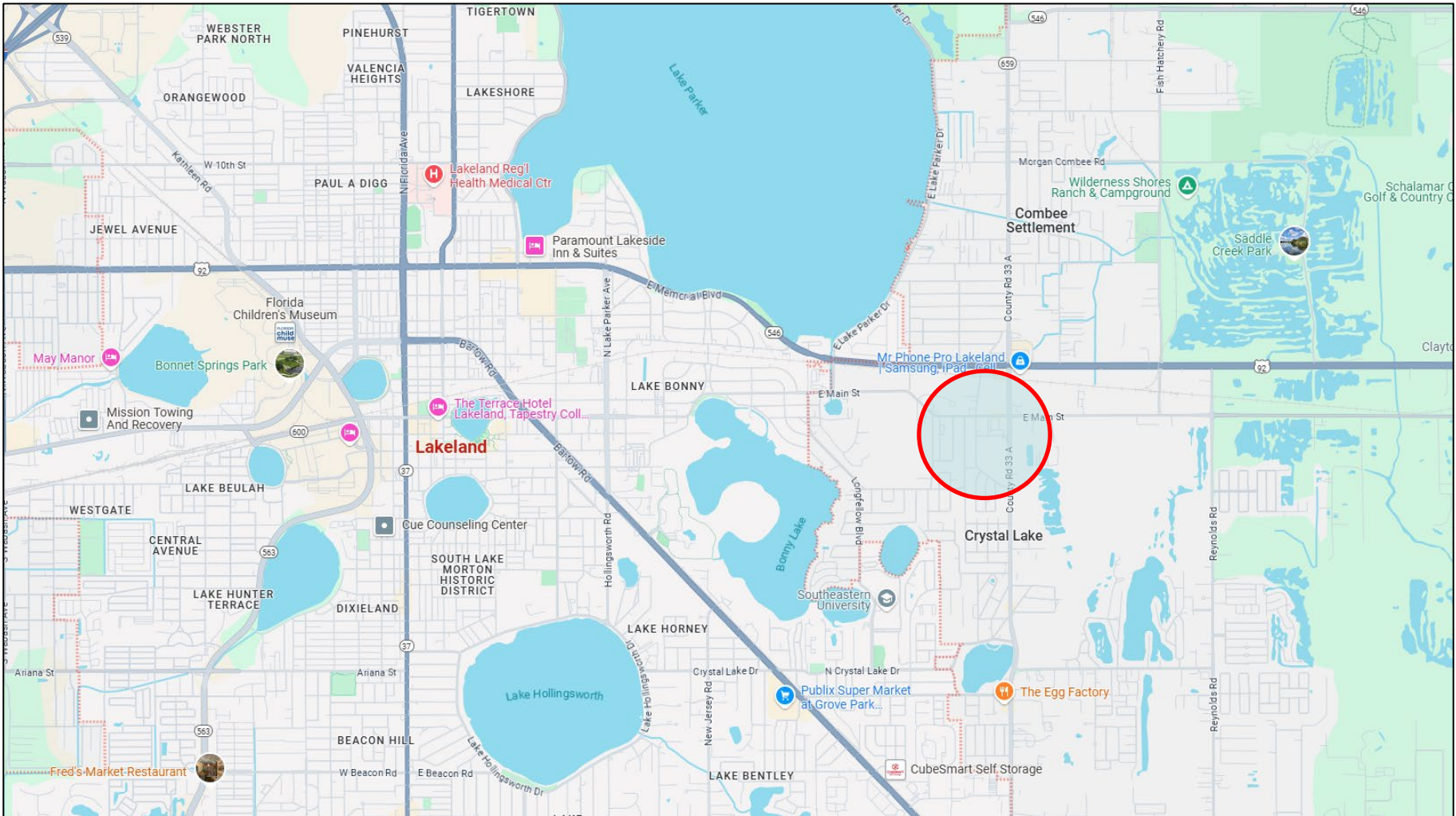


N.T.S.

Dons Ct (Lakeland Area)

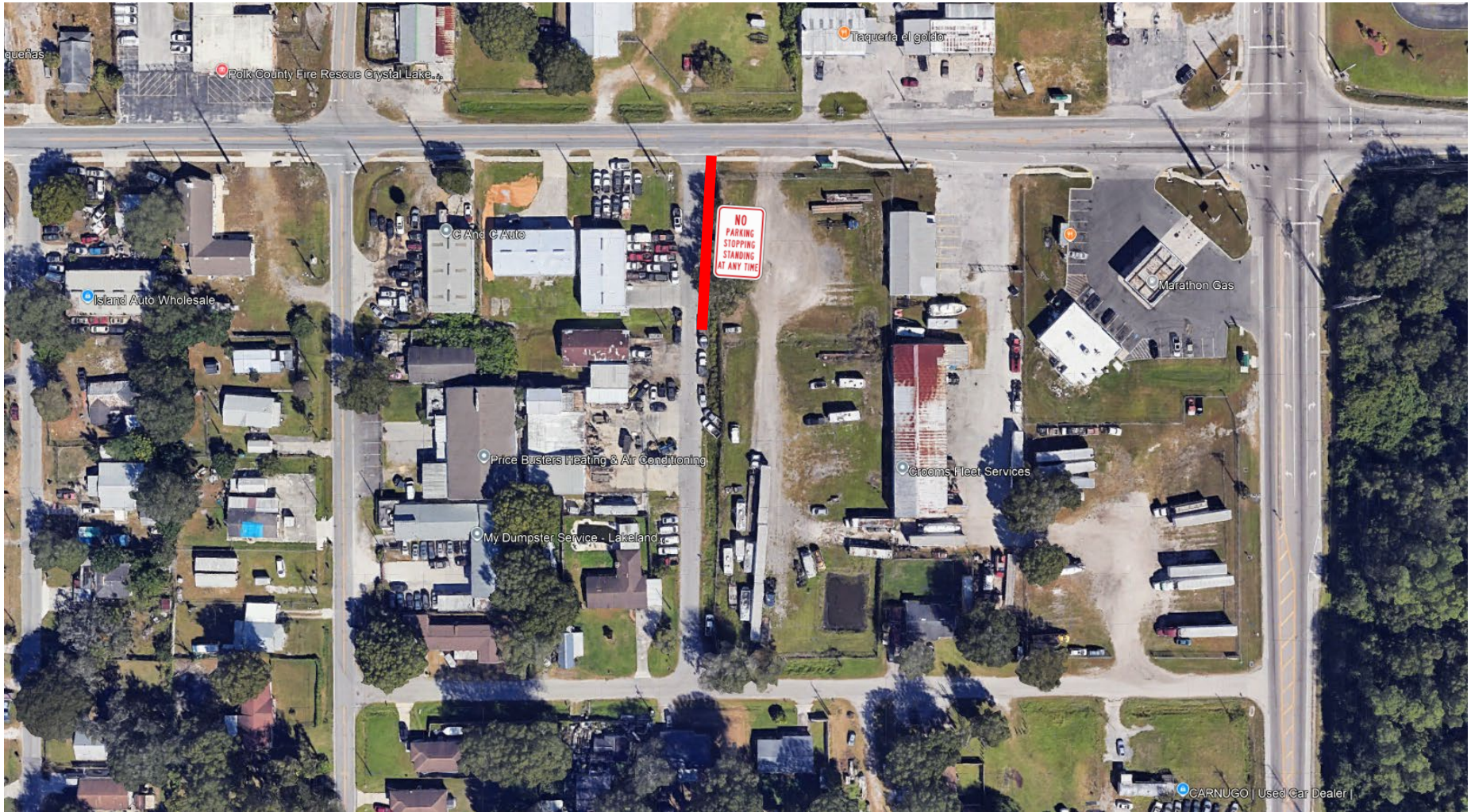
Request for Parking Restrictions

Vicinity Map





Dons Ct (Lakeland Area)
Request for Parking Restrictions





POLK COUNTY ROADS & DRAINAGE DIVISION
NO PARKING, STOPPING OR STANDING REQUEST

ROAD DESCRIPTION

Name	E F Griffin Rd			Number	841627
Section	16	Township	28 S	Range	24 E
Commission District	3	Maintenance Unit	R3	Functional Classification	LR
From	Dons Pl	Node	N/A	Mile Post	N/A
To	CR 542 (Main St E)	Node	N/A	Mile Post	N/A

REASON FOR RESOLUTION

Customer Service Request #	76938	Internal Request		External Request	✓
External Agency Name (If Applicable)					
Problem Statement: Citizen requests parking restriction due to visibility issues being caused by the parking of vehicles.					

REQUEST FOR POSTING

No Parking	✓	No Stopping	✓	No Standing	✓
Direction of road	North-South	Findings: Roads & Drainage has verified that the parking of vehicles in this area creates potential navigability concerns. Recommend signs be posted restricting parking on the east side of the street from 175' south of CR 542 to CR 542.			
Which side of road	East				
Distance in feet	175				

PICTURE OF LOCATION



Review conducted by	Steve Logan	Date	6/11/2025
Entered by	Steve Logan	Date	6/11/2025
Concurred/authorized by Traffic Manager	Amy J. Gregory, P.E.	Date	
Signature	