



# MEDICAL EXAMINER EXPANSION



# YOUR TEAM



PHIL TREZZA, AIA, LEED AP  
PRINCIPAL-IN-CHARGE



ERIC RAINBEAU, AIA  
PROJECT MANAGER/ARCHITECT



BLAYNE ROSE, NCDIQ  
PRODUCTION



DAVE SOBEL, CCCA, LEED AP  
CONSTRUCTION ADMIN



WINOLA H. DAVIDSON, IIDA, LEED AP  
INTERIOR DESIGNER

## CONSULTANTS



STRUCTURAL  
ENGINEERING



MECHANICAL/  
ELECTRICAL/  
PLUMBING



CIVIL  
ENGINEERING &  
LANDSCAPE

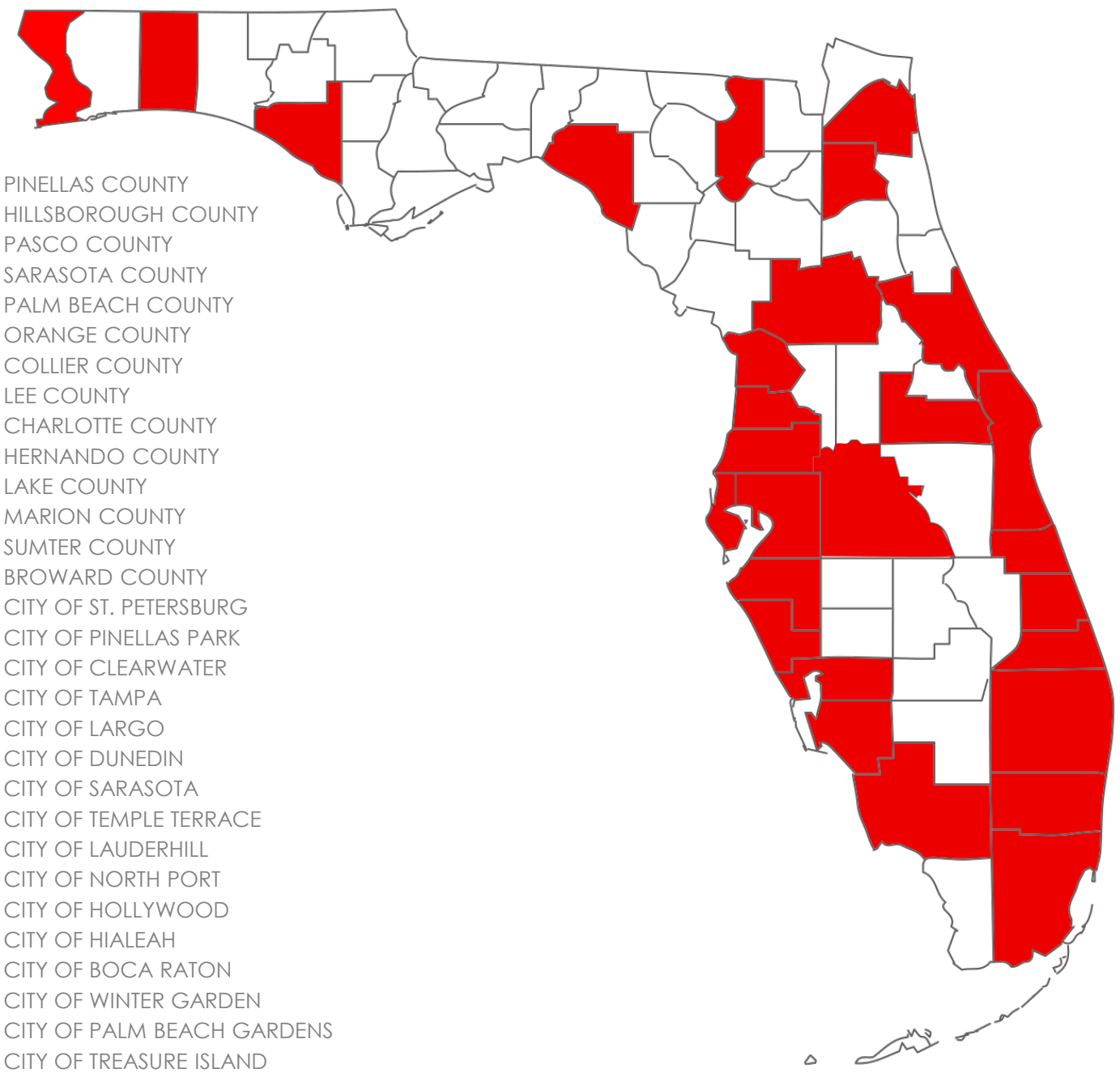


COST  
ESTIMATOR





**HARVARD • JOLLY**  
ARCHITECTURE



PINELLAS COUNTY  
HILLSBOROUGH COUNTY  
PASCO COUNTY  
SARASOTA COUNTY  
PALM BEACH COUNTY  
ORANGE COUNTY  
COLLIER COUNTY  
LEE COUNTY  
CHARLOTTE COUNTY  
HERNANDO COUNTY  
LAKE COUNTY  
MARION COUNTY  
SUMTER COUNTY  
BROWARD COUNTY  
CITY OF ST. PETERSBURG  
CITY OF PINELLAS PARK  
CITY OF CLEARWATER  
CITY OF TAMPA  
CITY OF LARGO  
CITY OF DUNEDIN  
CITY OF SARASOTA  
CITY OF TEMPLE TERRACE  
CITY OF LAUDERHILL  
CITY OF NORTH PORT  
CITY OF HOLLYWOOD  
CITY OF HIALEAH  
CITY OF BOCA RATON  
CITY OF WINTER GARDEN  
CITY OF PALM BEACH GARDENS  
CITY OF TREASURE ISLAND



# MEDICAL EXAMINER'S EXPERIENCE

POLK COUNTY MEO  
COLLIER COUNTY MEO  
LEE COUNTY MEO  
HILLSBOROUGH MEO RENO  
MONROE COUNTY MEO  
CLEVELAND CLINIC MORGUE







April 1, 2016

To Whom it May Concern:

In 2002 the City of Belleair Beach had a new City Hall designed by a new City Hall. In 2007 there was a redesign in many ways. With the redesign, the City remained professional, and the City remained professional.

I personally began working with the City of Belleair Beach in 2007. Having never before, I appreciated the fact that the City brought forward and the City Center was completed.

The City had an open house at the design and funding popular venue for at least looks out over the intracoastal waterway.

I highly recommend the City projects. Please feel free to provide.

Sincerely,  
*Nancy G. Gonzalez*  
Nancy G. Gonzalez  
City Manager  
City of Belleair Beach

444 Causeway Boulevard • Belleair Beach, FL 33511



## CITY OF ZEPHYRHILLS

"City of Pure Water"  
5335 Eighth Street • Zephyrhills, Florida 33542-4312  
(813) 780-0000 • Fax (813) 780-0005

GENE WHITFIELD  
Mayor

CITY COUNCIL  
LANCE A. SMITH  
Council President

KENNETH M. BURGESS, JR.  
Vice President

CHARLES E. PROCTOR

W. ALAN KNIGHT

JODI WILKESON

STEVEN F. SPINA  
City Manager

LORI L. HILLMAN  
City Clerk, CMC

MATTHEW E. MAGGARD  
City Attorney



City of St. Petersburg

Post Office Box 2842  
St. Petersburg, Florida 33731-2842  
Channel 35 WSPF-TV  
Telephone: 727 863-1171

April 27, 2016

RE: Harvard Jolly Architects

To Whom It May Concern:

I am please  
Harvard Jolly Architects  
under both  
Petersburg  
ranging from  
Port Terminal

The design  
anticipated  
emergency  
an experienced  
and critical  
and program  
facility. The  
professionals  
their assistance

If you have

Sincerely,

*Raul Quintana*  
Raul Quintana  
City Architect



## OFFICE OF THE COUNTY ADMINISTRATOR

To Whom It May Concern:

I had the pleasure of working with the Harvard Jolly Architects team during the design and construction of the Pinellas County Public Safety Facility and Centralized Communications Center (PSF & CCC). The team provided space programming, design development, construction documents, and construction management administration.

This project consolidated all critical public safety functions into a Category (5) hurricane hardened facilities onto one campus. The main building included the centralization of the County's emergency operations center, 9-1-1 communications and dispatch, informational technology server room, and the Sheriff's Administrative Headquarters. Also, situated on the campus is a state of the art central energy plant, a fleet maintenance building, communications equipment building and an 800 space parking structure. With the exception of the communications equipment room, all buildings/structures were designed to be multi-purpose for pre/during/post storm event operations.

In August 2015, the County celebrated the ribbon cutting for the PSF & CCC. County officials, municipal partners and our residents were amazed with the design and operations of the PSF & CCC. The PSF & CCC is the nucleus for public safety within the County now and for decades to follow.

Harvard Jolly Architects were extremely instrumental with the success of this project and I highly recommend them for any architectural design and construction management projects that you may be considering. I offer my assistance for any specific reference or technical questions you may have. Please feel free to contact me.

Sincerely,

*Paul S. Sacco*

Paul S. Sacco  
Assistant County Administrator  
Office: 727-464-3002  
[psacco@pinellascounty.org](mailto:psacco@pinellascounty.org)

# REFERENCES SECOND TO NONE

“a top-notch firm composed of very knowledgeable and professional individuals, capable of handling any size or type of A/E project.”

C. Craig Clements, RA  
Former County Architect  
Hillsborough County



# ROLE OF PROJECT MANAGER

COMMUNICATION

UNDERSTANDING COUNTY'S NEEDS

DOCUMENTATION

USERS' NEEDS ARE CARRIED  
THROUGHOUT THE PROJECT

SCHEDULING – ADDITIONAL  
RESOURCES

BEGINNING TO END



# MANAGING FINANCIAL EXPECTATIONS

MAKING THE MOST OF  
EVERY DOLLAR

Working Relationship with CMs & General Contractors

Conversations About Constructability & Availability

Understanding Lead Time Items

Balancing Project Goals with Budget

Opportunities to Save Costs

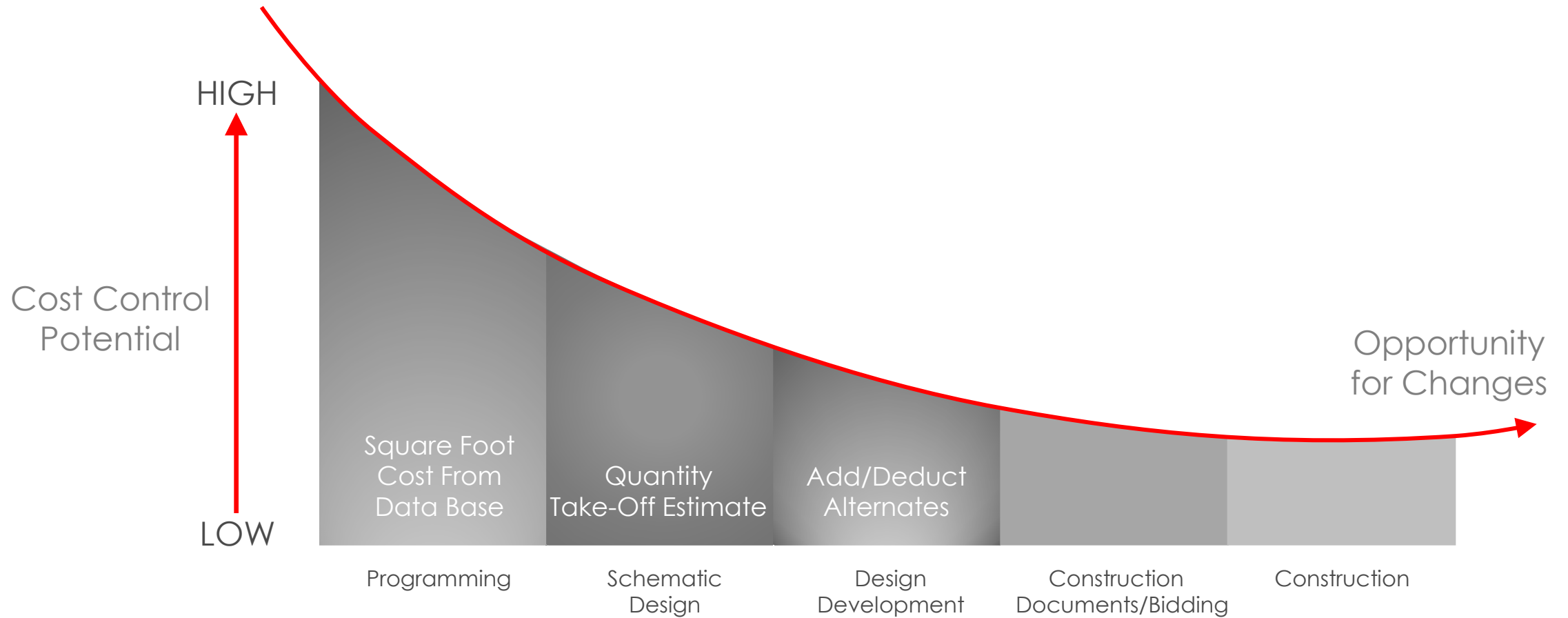
Database of Recently Bid Projects

Accurate Construction Documents

Contingency

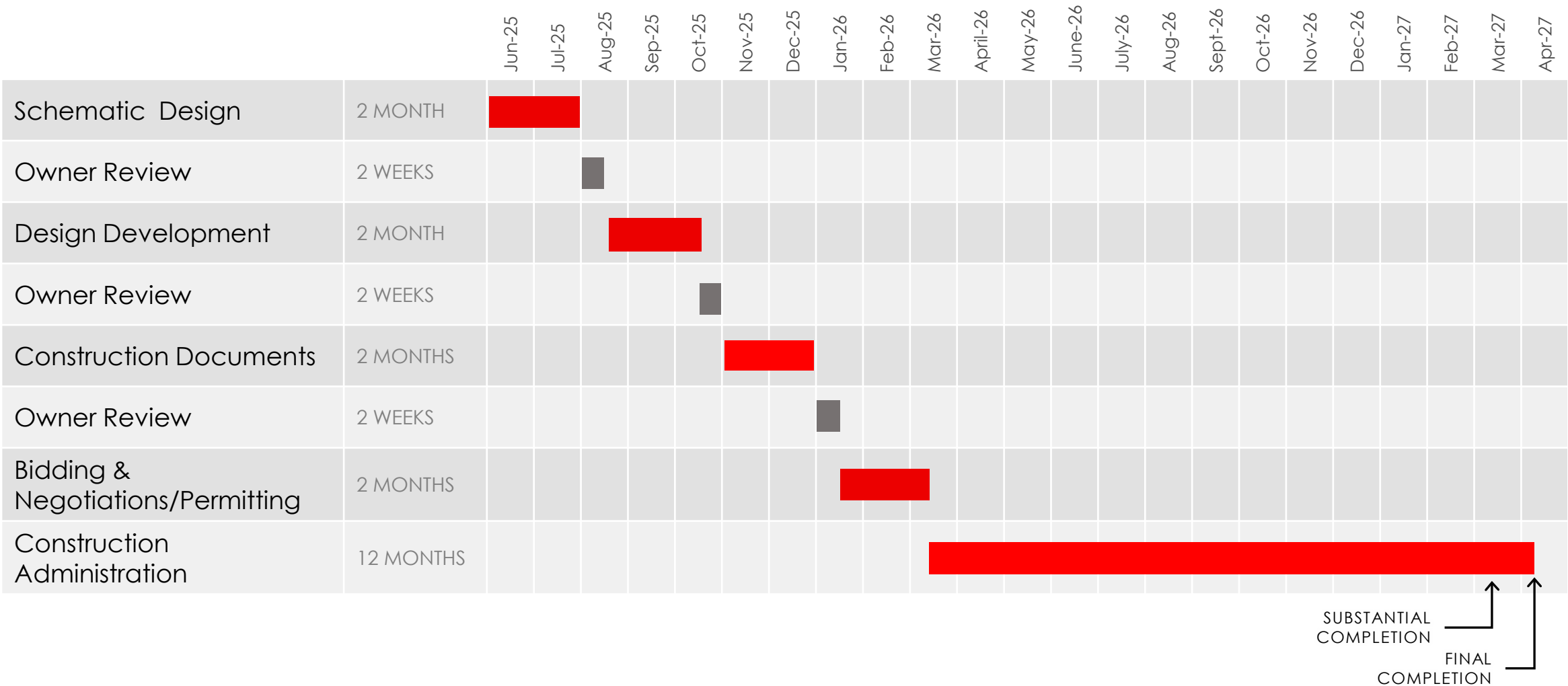
Add Alternates

# ABILITY TO CONTROL COSTS



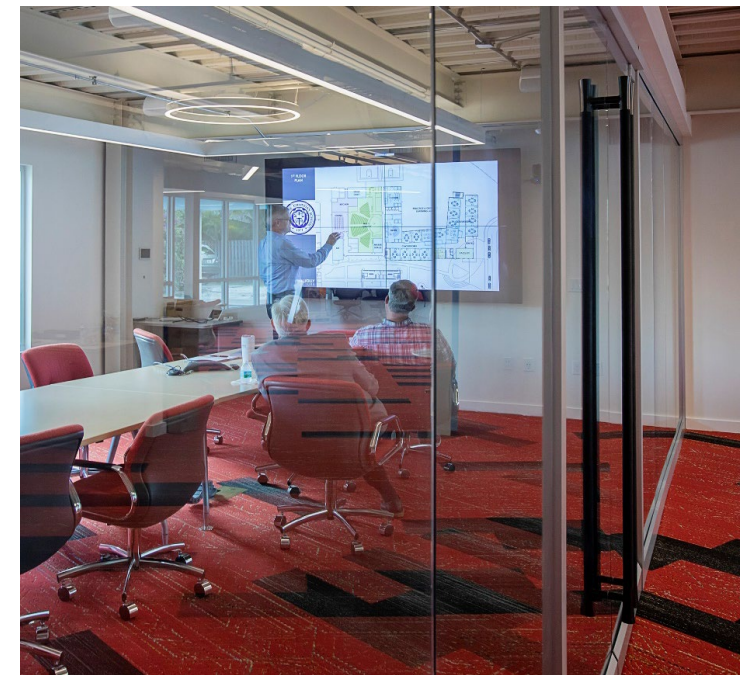


# SCHEDULE



# APPROACH TO THE PROJECT

DESIGN PROCESS



LISTEN, LEARN, & LEAD



# APPROACH TO THE PROJECT

DESIGN PROCESS

TEAM APPROACH: FOSTERS INNOVATION & SUCCESS

USER-ORIENTED PLANNING PROCESS

RESPONSIVE, THOUGHTFUL SOLUTIONS  
TAILORED TO THE USERS

PROGRAMMING & DESIGN CHARRETTES

- We work directly with you to identify your space needs
- We work with you to build responsive ideas and consensus
- We listen, present options, and discover solutions
- We brainstorm with you to create the best solutions

BALANCE PROGRAM & BUDGET



# TRENDS

USE OF COMPUTERS & ACCESS TO THE INTERNET

CMSs (CASE MANAGEMENT SYSTEMS)

ADVANCED IMAGING TECHNOLOGY  
(X-RAY, MRI, & CT) AS DIAGNOSTIC  
TOOLS

DNA & FORENSIC GENETIC  
GENEALOGY





# TRENDS

ADJUSTABLE HEIGHT TABLES TO  
REDUCE BACK PAIN & STRESS IN  
OPERATORS

CEILING MOUNTED LIFTS TO MOVE  
BODIES

LARGE MONITORS TO VIEW FORENSIC  
IMAGES





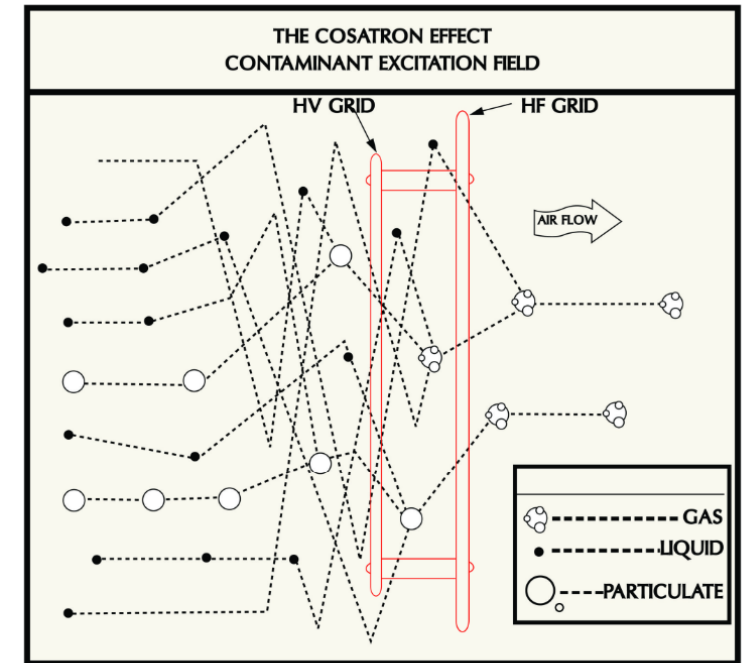
# HVAC SYSTEM

## COSATRON

ADVANCEMENTS IN TECHNOLOGY

INTEGRATION WITH MONITORING SYSTEMS

ENHANCED FILTRATION EFFICIENCY



CosaTron Confidential



## DESIGN PROCESS



March 5, 2024



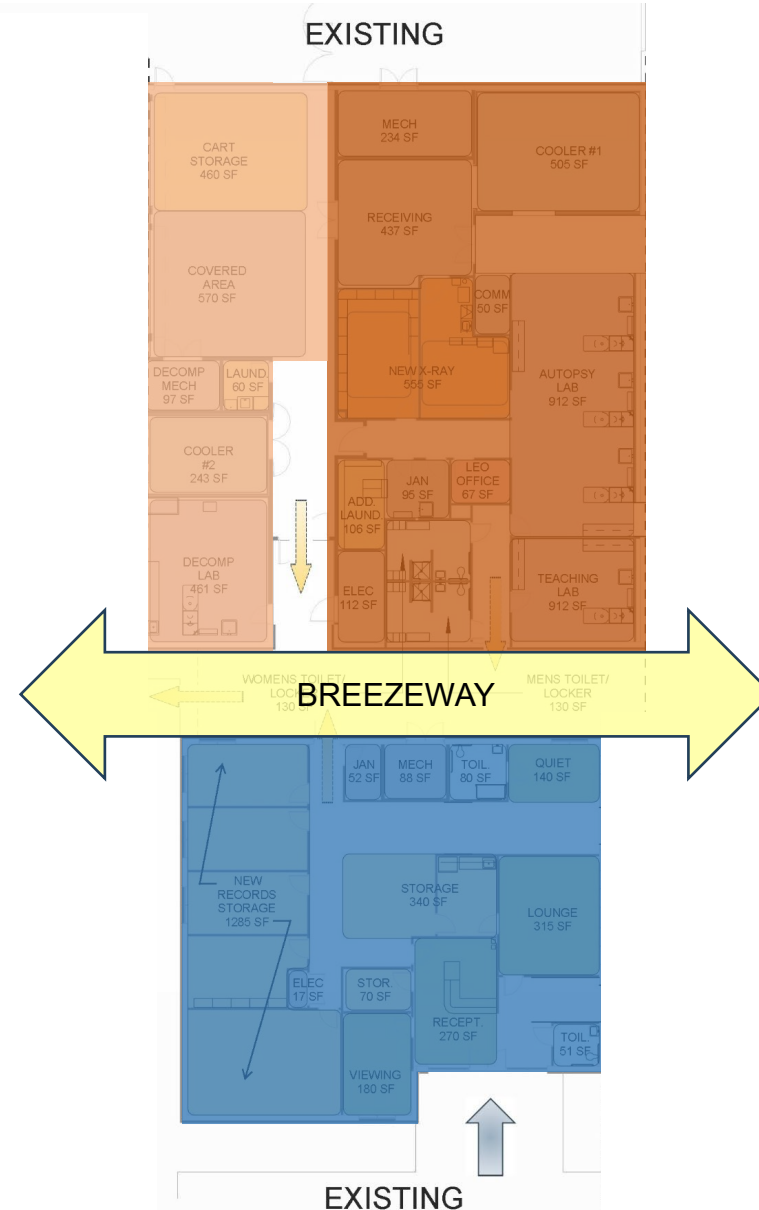


# APPROACH TO THE PROJECT

DESIGN PROCESS

MORGUE BUILDING

ADMINISTRATION BUILDING



## SPACE LEGEND

- COOLER
- LAB
- LOUNGE/CONF
- OFFICE
- RESTROOM/LOCKER
- STORAGE
- UTILITY
- X-RAY
- MAIN ENTRANCE
- INTERNAL ACCESS/EXIT
- DELIVERY ENTRANCE



## DESIGN PROCESS

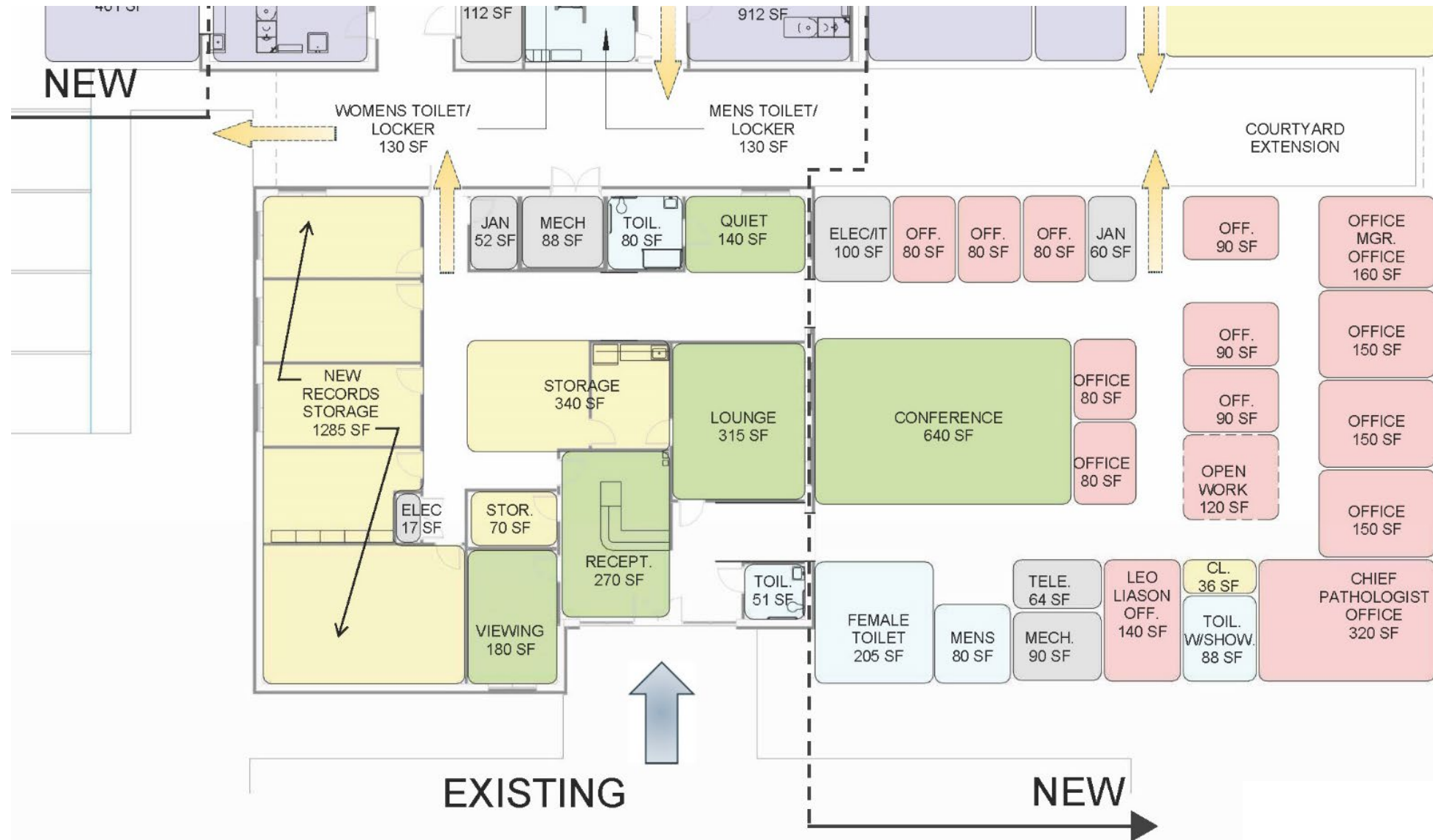


## DESIGN PROCESS





## DESIGN PROCESS



# APPROACH TO THE PROJECT

DESIGN PROCESS















































POLK COUNTY



DISTRICT 10  
MEDICAL EXAMINER  
IN & FOR POLK, HARRIS  
& HIGHLANDS COUNTIES





POLK COUNTY



DISTRICT 10  
MEDICAL EXAMINER  
IN & FOR POLK, HAWAII  
& HIGHLANDS COUNTIES





# MEDICAL EXAMINER EXPANSION

## WHY US?





# MEDICAL EXAMINER EXPANSION

Experience  
Competency  
Efficient