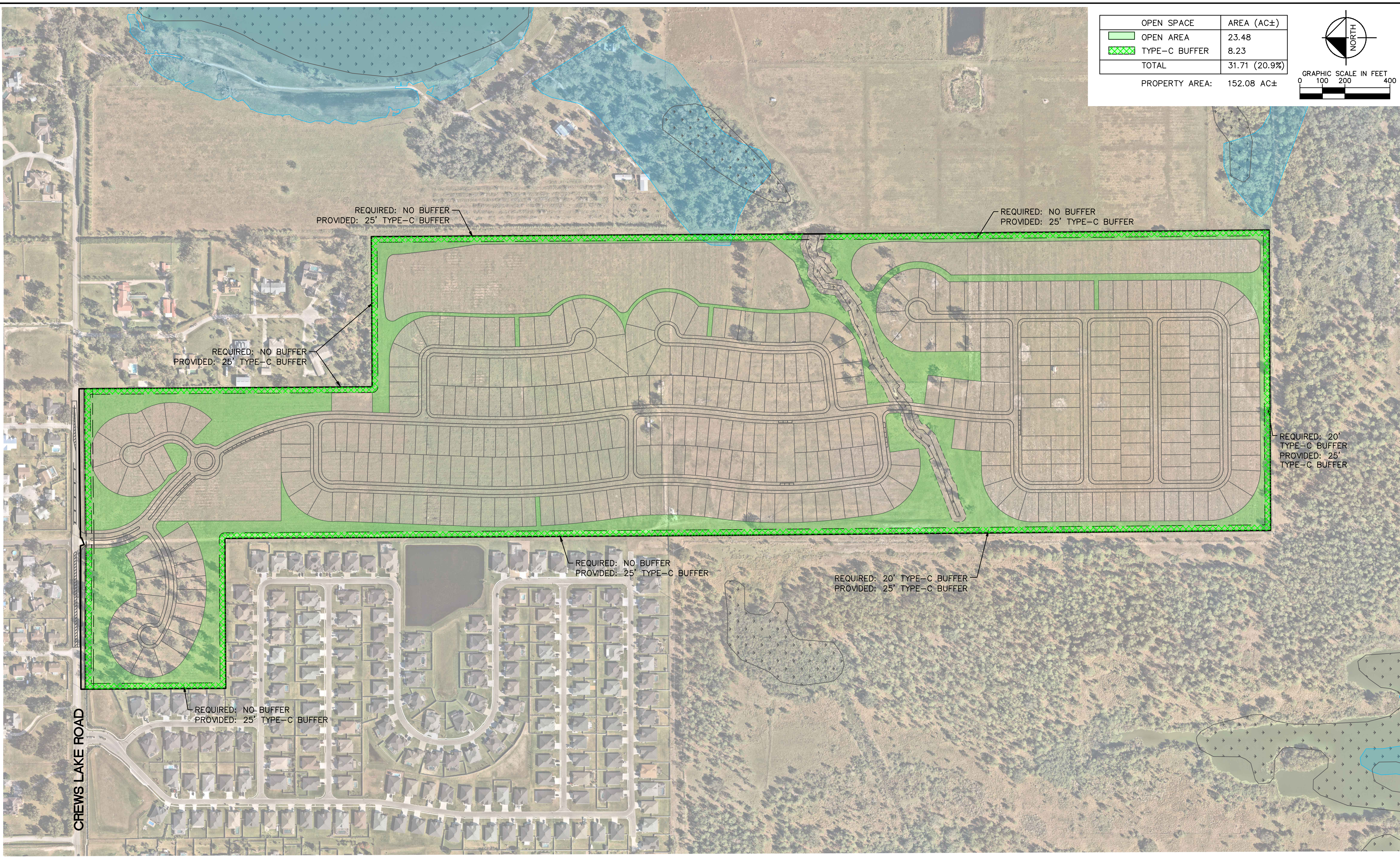
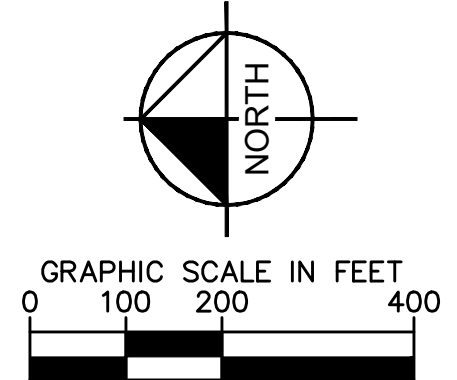


Drawing name: K:\LAK_Civil\046489016 - Pulte Crews Lake\CAD\Exhibits\Level 3\Exh 2 Open Space Plan.dwg EX1 Apr 20, 2026 12:06pm by: Gage Bruno
This document, together with the concepts and designs presented herein, is an instrument of service, is intended only for the specific purpose and client for which it was prepared. Reuse of and improper reliance on this document without written authorization and approval by Kimley-Horn and Associates, Inc. shall be without liability to Kimley-Horn and Associates, Inc.



OPEN SPACE	AREA (AC±)
OPEN AREA	23.48
TYPE-C BUFFER	8.23
TOTAL	31.71 (20.9%)
PROPERTY AREA:	152.08 AC±



CREWS LAKE ROAD

REQUIRED: NO BUFFER
PROVIDED: 25' TYPE-C BUFFER

REQUIRED: NO BUFFER
PROVIDED: 25' TYPE-C BUFFER

REQUIRED: NO BUFFER
PROVIDED: 25' TYPE-C BUFFER

REQUIRED: NO BUFFER
PROVIDED: 25' TYPE-C BUFFER

REQUIRED: 20' TYPE-C BUFFER
PROVIDED: 25' TYPE-C BUFFER

REQUIRED: NO BUFFER
PROVIDED: 25' TYPE-C BUFFER

REQUIRED: 20'
TYPE-C BUFFER
PROVIDED: 25'
TYPE-C BUFFER