

RESOLUTION NO.: _____

WHEREAS, the Board of County Commissioners, by adopting a Resolution dated March 19, 1996, attached hereto as Exhibit "A", caused County Road 557 (Buena Vista Drive), a County-maintained Urban Collector road, to be posted 30 M.P.H., 40 M.P.H., 45 M.P.H., and 55 M.P.H., and

WHEREAS, the Polk County Roads & Drainage Division has since conducted speed studies for County Road 557 (Buena Vista Drive) (Road Number 763201); from US Highway 92 to Interstate 4. Located in S-32, T-27S, R-26E., and

WHEREAS said studies were made in accordance with the procedures established by the State of Florida Department of Transportation, and said studies verified that postings of 30 M.P.H., 40 M.P.H., 45 M.P.H., and 55 M.P.H. are reasonable, and

WHEREAS under the laws of the State of Florida, the Board of County Commissioners is vested with the authority to establish speed limits on County maintained roads,

NOW, THEREFORE, BE IT RESOLVED that the Polk County Roads & Drainage Division is herewith directed to cause County Road 557 (Buena Vista Drive) to be posted 30 M.P.H. from US Highway 92 to Mile Post 0.35, 40 M.P.H. from Mile Post 0.35 to Mile Post 0.80, 45 M.P.H. from Mile Post 0.80 to County Road 557A, 55 M.P.H. from County Road 557A to County Road 17 (Polk City Road), and 45 M.P.H. from County Road 17A (Polk City Road) to Interstate 4. Further, that Resolution dated March 19, 1996, attached hereto as Exhibit "A", is hereby repealed.

DATED this 7th day of October 2025.

County Road 763201

RESOLUTION

WHEREAS the Polk County Transportation Division, has made a speed study on CR 557, from US 92, Mile Post 00.000, to SR 400, Mile Post 06.230, which is located in Section 32, Township 27 South, Range 26 East, and

WHEREAS said study was made in accordance with procedures established by the State of Florida Department of Transportation, and

WHEREAS under the laws of the State of Florida, the Board of County Commissioners is vested with the authority to establish speed limits on County maintained roads,

NOW, THEREFORE, BE IT RESOLVED that the Polk County Transportation Division be and is herewith directed to cause said CR 557, from US 92, Mile Post 00.000, to SR 400, Mile Post 06.230, which is located in Section 32, Township 27 South, Range 26 East, to be posted as follows:

30 M.P.H. Mile Post 00.000 to Mile Post 00.350
40 M.P.H. Mile Post 00.350 to Mile Post 00.800
45 M.P.H. Mile Post 00.800 to Mile Post 01.500
55 M.P.H. Mile Post 01.500 to Mile Post 06.100
45 M.P.H. Mile Post 06.100 to Mile Post 06.230

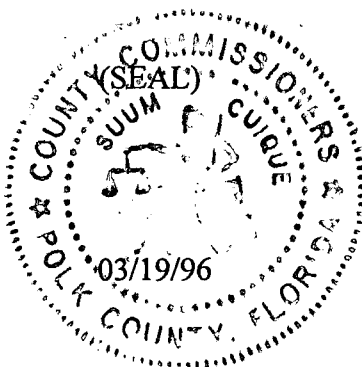
STATE OF FLORIDA
COUNTY OF POLK

I, E. D. "BUD" DIXON, Clerk of the Board of County Commissioners of Polk County, Florida, hereby certify that the foregoing is a true and correct copy of a resolution adopted by the said Board on the 19th day of March, 1996.

WITNESS my hand and official seal of said Board this 25th day of March, 1996.

E. D. "BUD" DIXON, Clerk

By: Martha H. Crews
Deputy Clerk



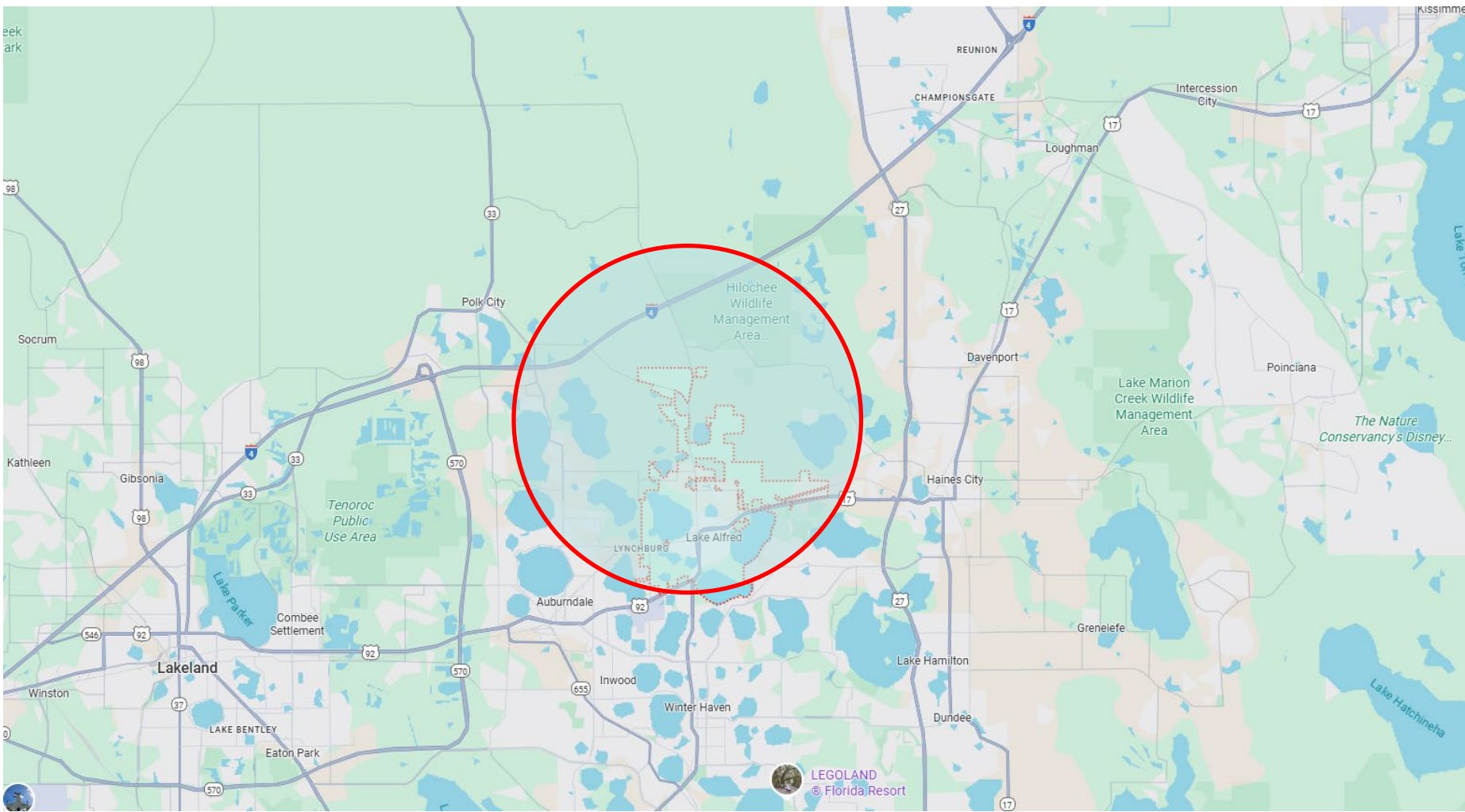


N.T.S.

CR 557 (Buena Vista Dr)

Request for Speed Limit Adjustment

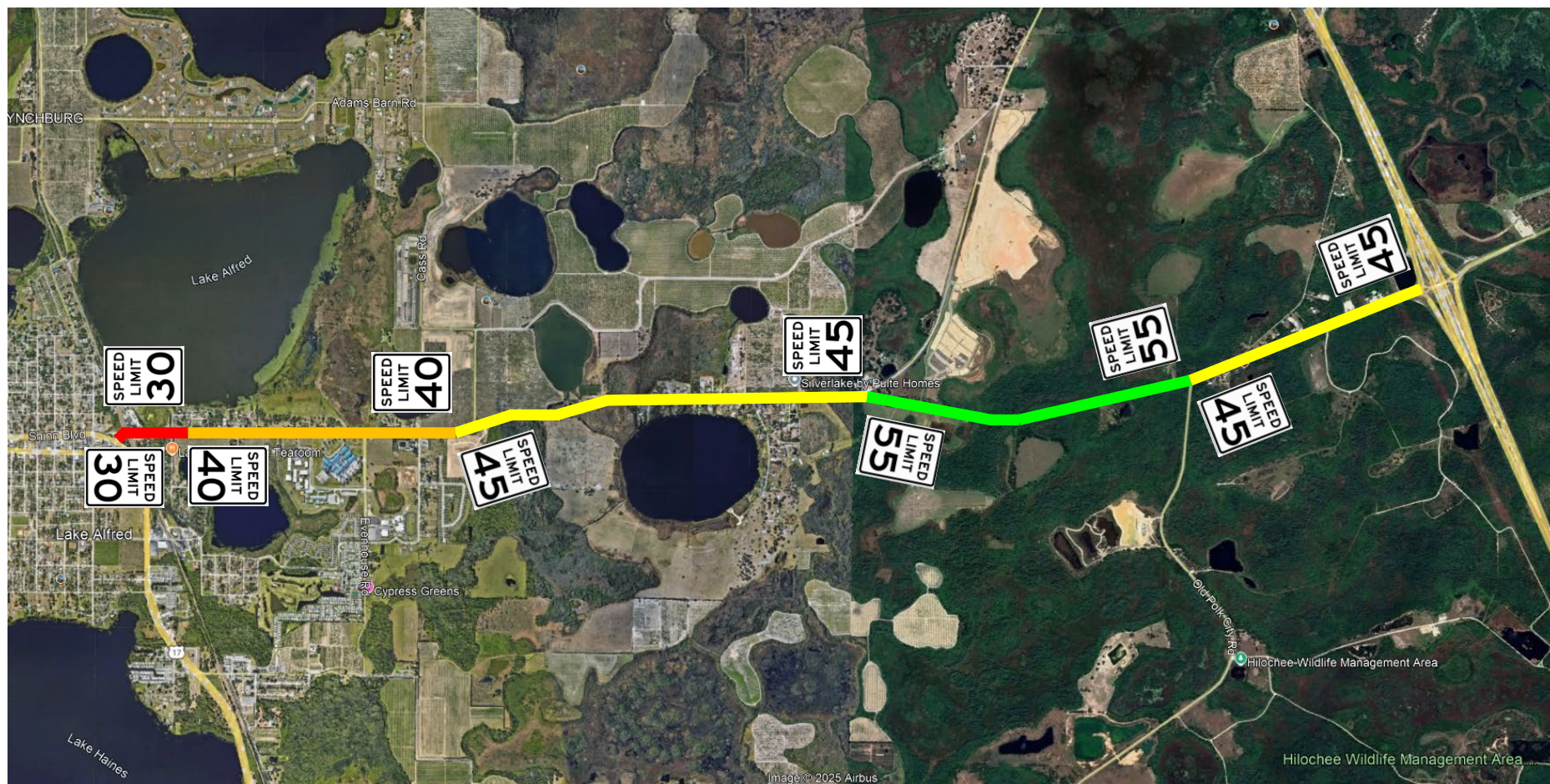
Vicinity Map





CR 557 (Buena Vista Dr)

Request for Speed Limit Adjustment





POLK COUNTY TRANSPORTATION DIVISION
SPEED STUDY

ROAD DESCRIPTION

Road Name	CR 557 (Buena Vista Dr)			Road Number	763201
Section	32	Township	27 S	Range	26 E
Commission District	3	Maintenance Unit	R3	Functional Classification	UC
From	US 92	Node	N/A	Mile Post	0.00
To	Interstate 4	Node	N/A	Mile Post	6.40

REASON FOR RESOLUTION

Customer Service Request #	76735	Internal Request		External Request	✓
----------------------------	-------	------------------	--	------------------	---

New Posting		Speed Adjustment	✓	
-------------	--	------------------	---	--

External Agency Name
(If Applicable)

Problem Statement:

The City of Lake Alfred requested a speed limit reduction due to increased development along the corridor.

TEST RUN SPEEDS

Test Run Speed #1 in M.P.H.	None	Comments:	85th Percentile	
Test Run Speed #2 in M.P.H.	None	Comments:	85th Percentile	
Test Run Speed #3 in M.P.H.	None	Comments:	85th Percentile	


ROADWAY ALIGNMENT

Number of Hills	12	Number of Curves	7	Number of Turns	1
Lane Width (ft)	12"	Number of Lanes	2	Shoulder Width (ft)	0
Number of School Zones	None	Posted Speed of School Zones	None	Pavement Condition	Good
Number of Intersections	21	Sight Distance of Intersections	Adequate		
Number of Driveways	76	Sight Distance of Driveways	Adequate		
Number of Stop Signs	0	Number of Signals	2		

SPEED LIMIT INFORMATION

Current Speed Limit Posting (M.P.H.)	55	55			
Proposed Speed Limit Posting (M.P.H.)	45	45			
From Mile Post	1.500	5.070			
To Mile Post	3.540	6.400			

Notes:

Review conducted by	Holly Toley	Date	8/22/2025
Entered by	Steve Logan	Date	9/10/2025
Concurred/authorized by Traffic Engineer	Amy J. Gregory, P.E.		
Signature		Date	