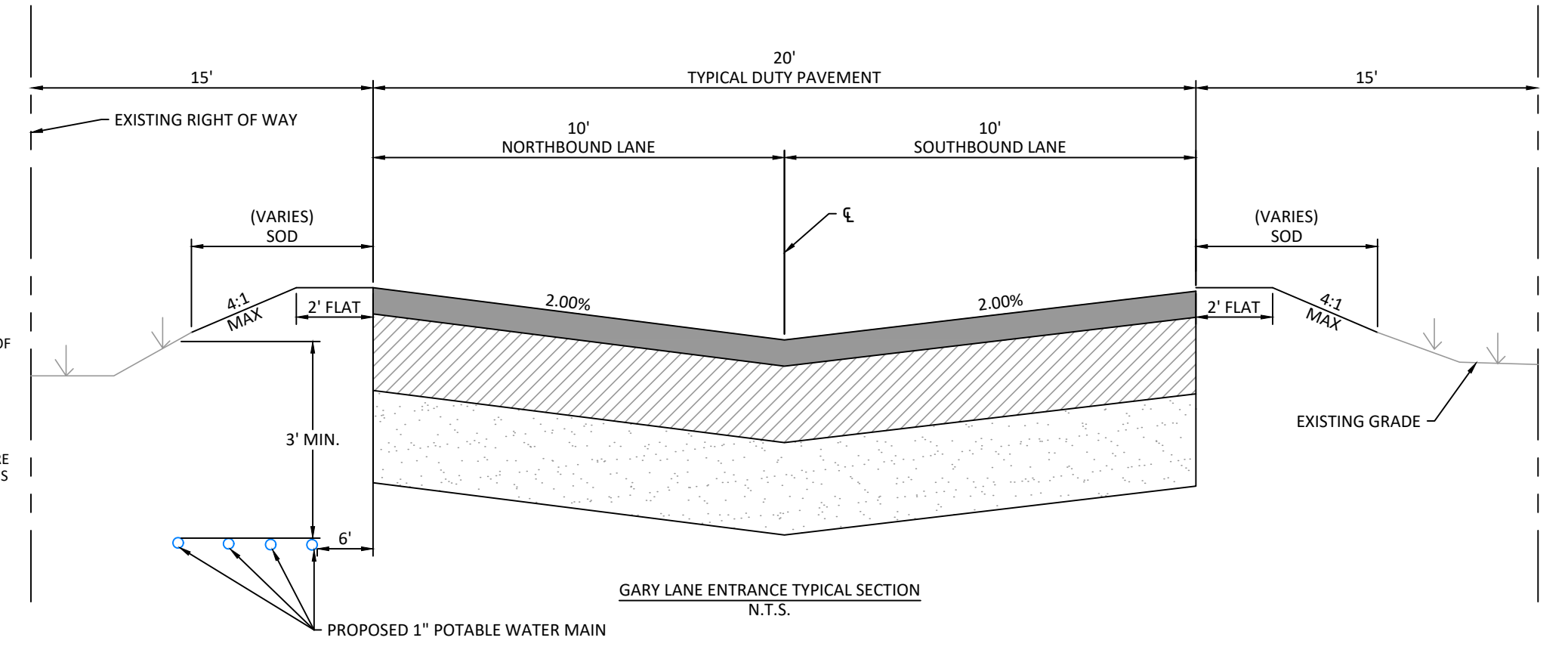


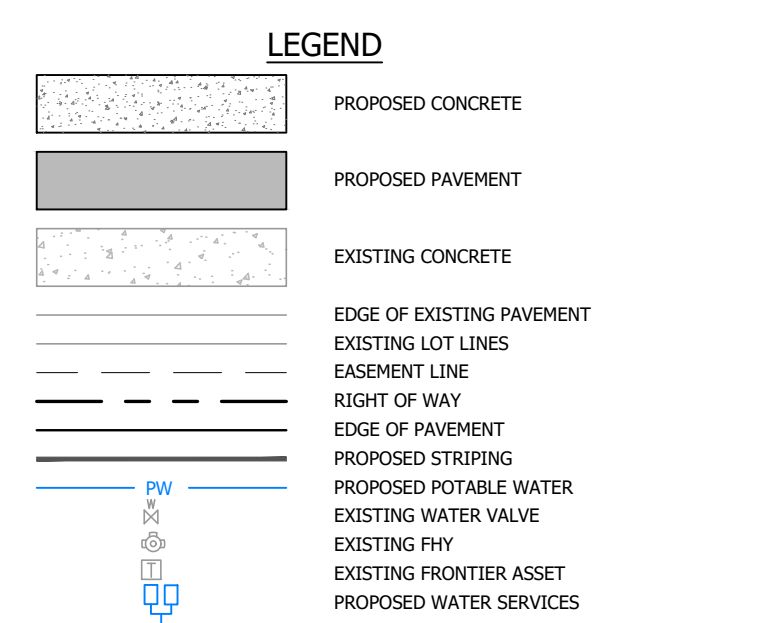
**GENERAL POTABLE WATER**

- CONTRACTOR TO MAKE A SUNSHINE ONE CALL AND FIELD LOCATE ALL EXISTING UTILITIES. ALL EXISTING UTILITY LOCATIONS SHOWN ARE APPROXIMATE.
- ALL VALVES, SERVICES, FITTINGS, HYDRANTS, ETC. ARE NOT DRAWN TO SCALE BUT ARE SHOWN FOR SCHEMATIC PURPOSES ONLY. FOR PROPER INSTALLATION DETAILS SEE WATER AND SEWER DETAILS AND SPECIFICATIONS.
- CONTRACTOR TO PERFORM ALL CONNECTIONS TO EXISTING WATER MAIN IN THE PRESENCE OF AUTHORIZED CITY OF LAKELAND UTILITIES DIVISION PERSONNEL.
- BACTERIOLOGICAL SAMPLING POINTS SHALL BE TAKEN AT ALL POINTS SHOWN ON UTILITY PLANS AND ALL POINTS INDICATED ON THE EDEP PERMIT. A MINIMUM OF 1 SAMPLE SHALL BE TAKEN AT THE PROPOSED METER LOCATION.
- THE CONTRACTOR SHALL BE RESPONSIBLE FOR CONSTRUCTING WATER DISTRIBUTION SYSTEM ACCORDING TO THE ENGINEER'S DESIGN AND THE LATEST CITY OF LAKELAND UTILITIES SPECIFICATIONS AND PROCEDURES.
- CONTRACTOR SHALL PROVIDE ALL SERVICE AND BEND LOCATIONS TO THE ENGINEER FOR AS-BUILT/RECORD DRAWINGS.
- ALL PRESSURIZED MAINS SHALL BE POLY-PIGGED.
- AS-BUILT DRAWINGS SHALL INDICATE ANY DEPARTURES FROM THE APPROVED PLANS DURING CONSTRUCTION.
- THE SUBDIVIDER OR CONTRACTOR SHALL NOTIFY THE COUNTY OR CITY ENGINEER DIVISION AT LEAST ONE WEEK PRIOR TO CONSTRUCTION.
- THE CONTRACTOR SHALL OBTAIN A CITY OF LAKELAND RIGHT OF WAY USE PERMIT PRIOR TO THE COMMENCEMENT OF ANY WORK WITHIN CITY OF LAKELAND RIGHT OF WAY.
- ALL WATER LINES ARE TO BE INSTALLED WITH A MINIMUM OF 3' OF COVER.
- ALL CONSTRUCTION MATERIALS SHALL BE LISTED ON THE APPROVED MATERIALS LIST PROVIDED BY THE UTILITY COMPANY. CONTRACTOR TO ENSURE ALL PUBLICLY MAINTAINED ITEMS ARE IN ACCORDANCE WITH THE UTILITY CODE.
- HORIZONTAL AND VERTICAL SEPARATION BETWEEN DISSIMILAR UTILITIES ARE TO BE MAINTAINED PER THE PROVIDED SEPARATION DETAIL. WHERE POSSIBLE, THE LEAST CONTAMINATED UTILITY SHALL BE PLACED ABOVE THE OTHERS. MINIMUM VERTICAL SEPARATION OF DISSIMILAR UTILITIES IS 12" UNLESS OTHERWISE NOTED.
- TRADITIONS ENGINEERING SHALL BE NOTIFIED A MINIMUM OF 48 HOURS PRIOR TO ANY TESTING OR DISINFECTION.
- HYDROSTATIC TESTS CONSISTING OF PRESSURE TEST AND LEAKAGE TEST SHALL BE CONDUCTED ON ALL NEWLY-INSTALLED PRESSURE PIPES AND APPURTENANCES. THE TESTS SHALL BE IN ACCORDANCE WITH PROVISIONS OF AWWA C600 OR M23 AS APPLICABLE. ADDITIONAL TESTING STANDARDS BY THE UTILITY COMPANY MAY BE REQUIRED.
- DISINFECTION OF THE WATER DISTRIBUTION SYSTEM SHALL BE PERFORMED IN ACCORDANCE WITH AWWA C651-DISINFECTING WATER MAIN.
- WHERE THE SOILS REPORT INDICATES THE POSSIBILITY OF UNSUITABLE MATERIAL IN THE VICINITY OF UTILITY LINES, THE CONTRACTOR SHALL DETERMINE THE NATURE AND EXTENT OF THIS UNSUITABLE MATERIAL, PREPARE TRENCH AND INSTALL THE UTILITY LINES IN ACCORDANCE WITH ASTM D-2321. IT WILL BE THE CONTRACTOR'S RESPONSIBILITY TO NOTIFY THE ENGINEER OF THIS UNSUITABLE MATERIAL.
- FOR PURPOSES OF BACKFILLING TRENCHES: COMMON FILL SHALL CONSIST OF MINERAL SOIL, SUBSTANTIALLY FREE OF CLAY, ORGANIC MATERIAL, MUCK, LOAM, WOOD, TRASH AND OTHER OBJECTIONABLE MATERIAL WHICH MAY BE COMPRESSIBLE OR WHICH CANNOT BE COMPACTED PROPERLY. COMMON FILL SHALL NOT CONTAIN STONES LARGER 3-1/2 INCHES IN ANY DIMENSION IN THE TOP 12 INCHES OR SIX INCHES IN ANY DIMENSION IN THE BALANCE OF THE AREA. COMMON FILL SHALL NOT CONTAIN ASPHALT, BROKEN CONCRETE, MASONRY, RUBBLE OR OTHER SIMILAR MATERIALS. IT SHALL HAVE PHYSICAL PROPERTIES SUCH THAT IT CAN BE READILY SPREAD AND COMPACTED DURING FILLING. ADDITIONAL COMMON FILL SHALL BE IN ACCORDANCE WITH FDOT SPECIFICATIONS, UNLESS FINER MATERIAL IS APPROVED FOR USE IN A SPECIFIC LOCATION BY THE UTILITY COMPANY.



**ONSITE POTABLE WATER LINE NOTE**

- POTABLE WATER LINE SHALL BE INSTALLED A MINIMUM OF 3' BELOW EXISTING SURFACE FROM TOP OF PIPE.

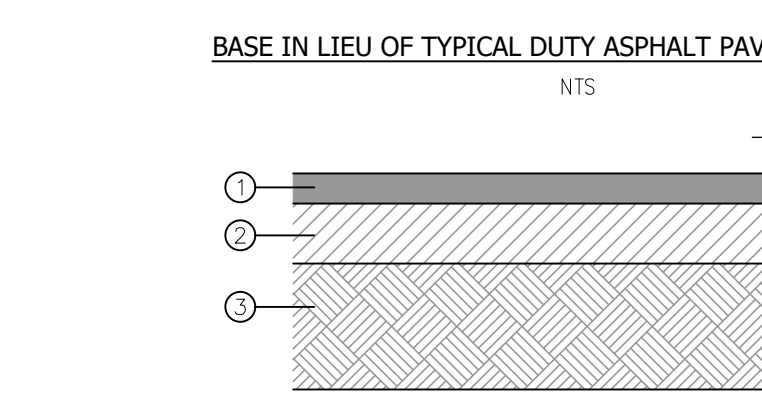


**SITE CHARACTERISTICS**

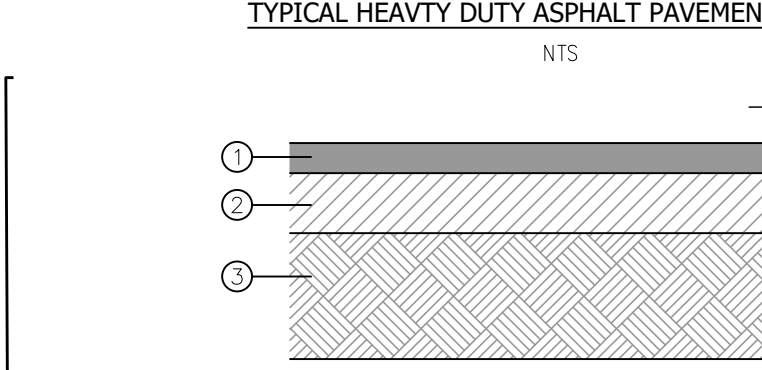
PARCEL INFORMATION:

PARCEL ID:	24-29-09-279990-00050
PROPOSED USE:	RESIDENTIAL
FLOOD AREA:	ZONE X/ZONE AE (12105C0485G EFF. 12/22/2016)
ZONING / LAND USE:	RESIDENTIAL
PARCEL AREA:	40.41 AC

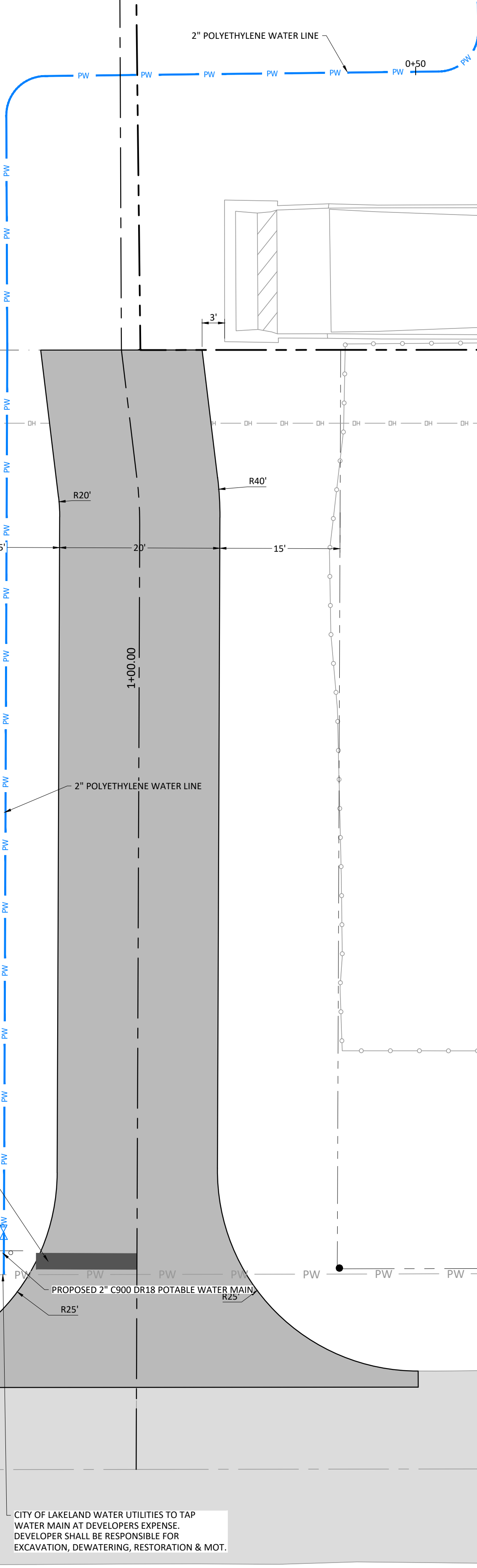
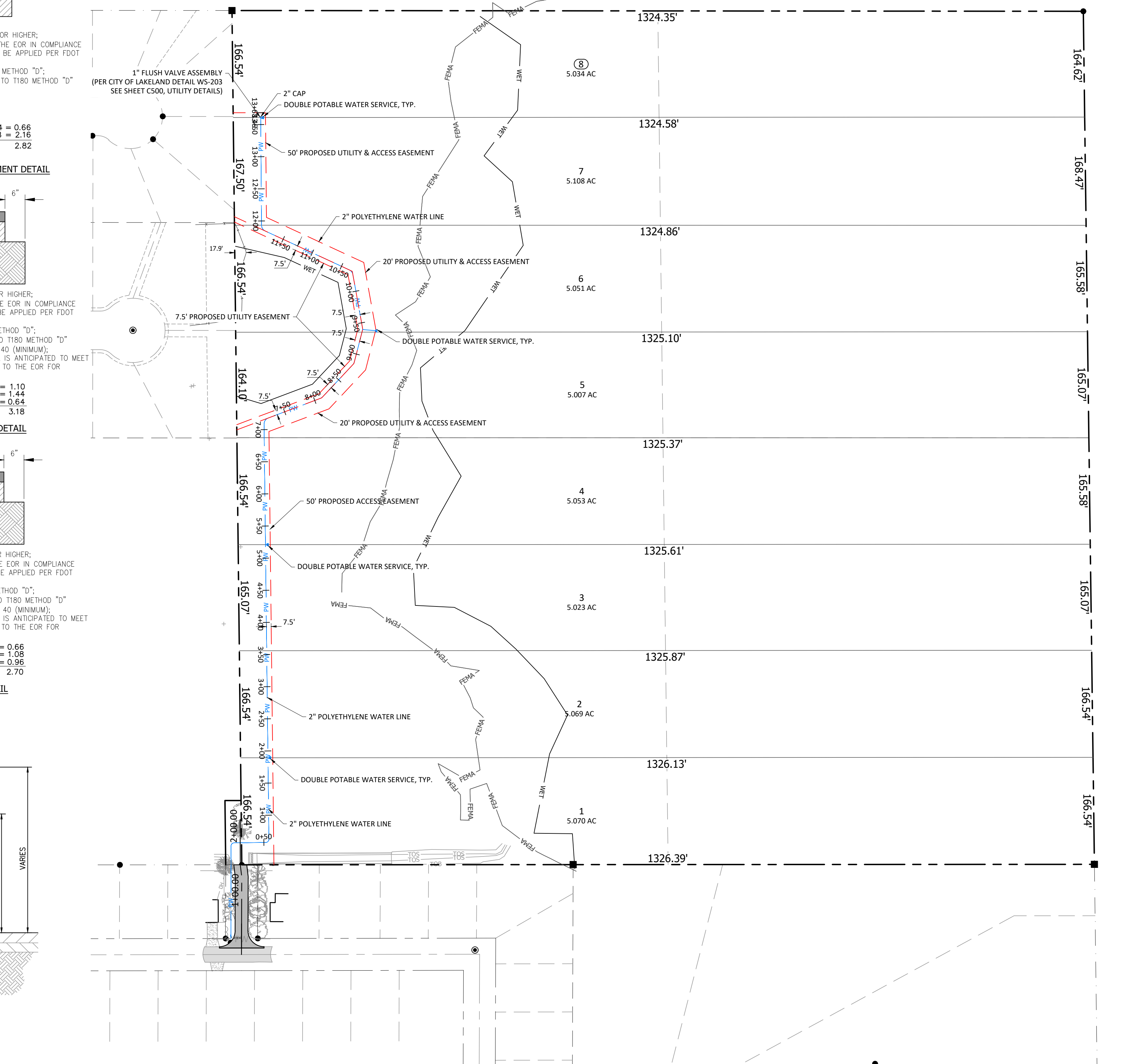
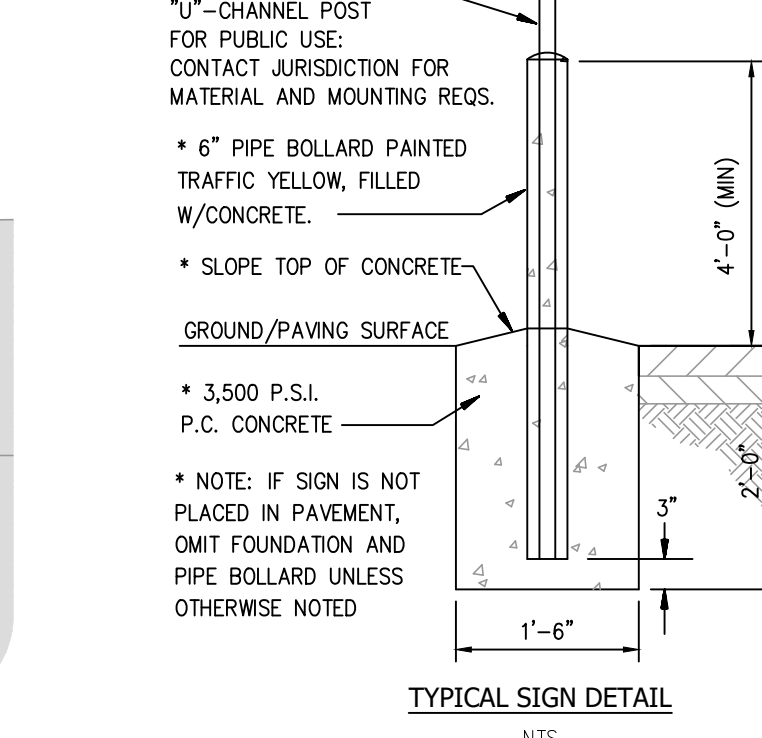
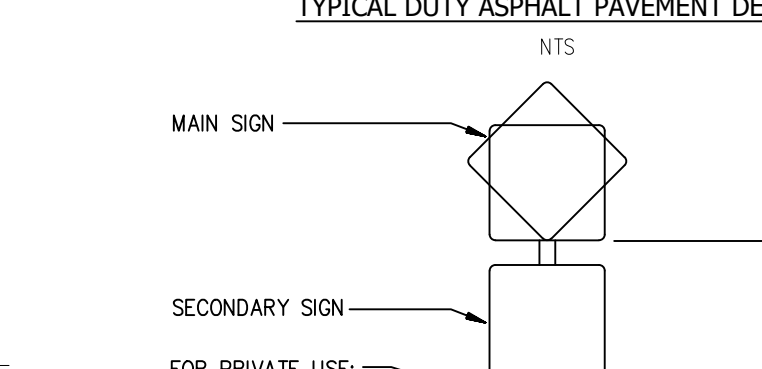
- 1.5" TYPE "SP-9.5" ASPHALTIC CONCRETE; TRAFFIC LEVEL B OR HIGHER; LAYER THICKNESS 1.0" TO 1.5"; RAP WILL BE APPROVED BY THE EOR IN COMPLIANCE WITH FDOT SPECIFICATIONS, SECTION 334; BINDER COURSE TO BE APPLIED PER FDOT SPECIFICATION, SECTION 334-2.
- 12" LIMEROCK (MIN LBR 100); COMPACTED 98% AASHTO T180 METHOD "D"; ALTERNATIVE: 8" CRUSHED CONCRETE; COMPACTED 98% AASHTO T180 METHOD "D"



- 2.5" TYPE "SP-9.5" ASPHALTIC CONCRETE; TRAFFIC LEVEL B OR HIGHER; LAYER THICKNESS 1.0" TO 1.5"; RAP WILL BE APPROVED BY THE EOR IN COMPLIANCE WITH FDOT SPECIFICATIONS, SECTION 334; BINDER COURSE TO BE APPLIED PER FDOT SPECIFICATION, SECTION 334-2.
- 8" LIMEROCK (MIN LBR 100); COMPACTED 98% AASHTO T180 METHOD "D"; ALTERNATIVE: 8" CRUSHED CONCRETE; COMPACTED 98% AASHTO T180 METHOD "D"
- 8" TYPE "B" STABILIZATION PER FDOT SPECIFICATION 160; LBR 40 (MINIMUM); COMPACTED TO 98% AASHTO T180. NOTE: IF EXISTING MATERIAL IS ANTICIPATED TO MEET THE REQUIREMENTS ABOVE THEN TESTING SHALL BE SUBMITTED TO THE EOR FOR VERIFICATION.



- 1.5" TYPE "SP-9.5" ASPHALTIC CONCRETE; TRAFFIC LEVEL B OR HIGHER; LAYER THICKNESS 1.0" TO 1.5"; RAP WILL BE APPROVED BY THE EOR IN COMPLIANCE WITH FDOT SPECIFICATIONS, SECTION 334; BINDER COURSE TO BE APPLIED PER FDOT SPECIFICATION, SECTION 334-2.
- 6" LIMEROCK (MIN LBR 100); COMPACTED 98% AASHTO T180 METHOD "D"; ALTERNATIVE: 8" CRUSHED CONCRETE; COMPACTED 98% AASHTO T180 METHOD "D"
- 12" TYPE "B" STABILIZATION PER FDOT SPECIFICATION 160; LBR 40 (MINIMUM); COMPACTED TO 98% AASHTO T180. NOTE: IF EXISTING MATERIAL IS ANTICIPATED TO MEET THE REQUIREMENTS ABOVE THEN TESTING SHALL BE SUBMITTED TO THE EOR FOR VERIFICATION.



CITY OF LAKELAND WATER UTILITIES TO TAP WATER MAIN AT DEVELOPER'S EXPENSE. DEVELOPER SHALL BE RESPONSIBLE FOR EXCAVATION, DEWATERING, RESTORATION & MOT.

REVISION NO.	DATE	DESCRIPTION

CLIENT: HULBERT HOMES  
PROJECT NAME: GARDEN OF EDEN

PROJECT NUMBER: 23-45  
SHEET NUMBER: C300

**TRADITIONS ENGINEERING**

GARY LANE, LAKELAND FLORIDA 33812