



INSTR # 2022295338
 BK 195 Pgs 31-33 PG(s)3
 RECORDED 11/09/2022 01:09:43 PM
 STACY M. BUTTERFIELD, CLERK OF COURT
 POLK COUNTY
 RECORDING FEES \$60.00
 RECORDED BY shakcamp

Plat Name: Solvita Phase 5D

Section 14
Township 27 South
Range 28 East

STATE OF FLORIDA
 COUNTY OF POLK

FILED FOR RECORD this 9th day of November 2022

Recorded in Plat Book: 195
 Page(s) ----- 28-30

Record verified 11/9/2022

Stacy M. Butterfield
 Clerk of Circuit Court

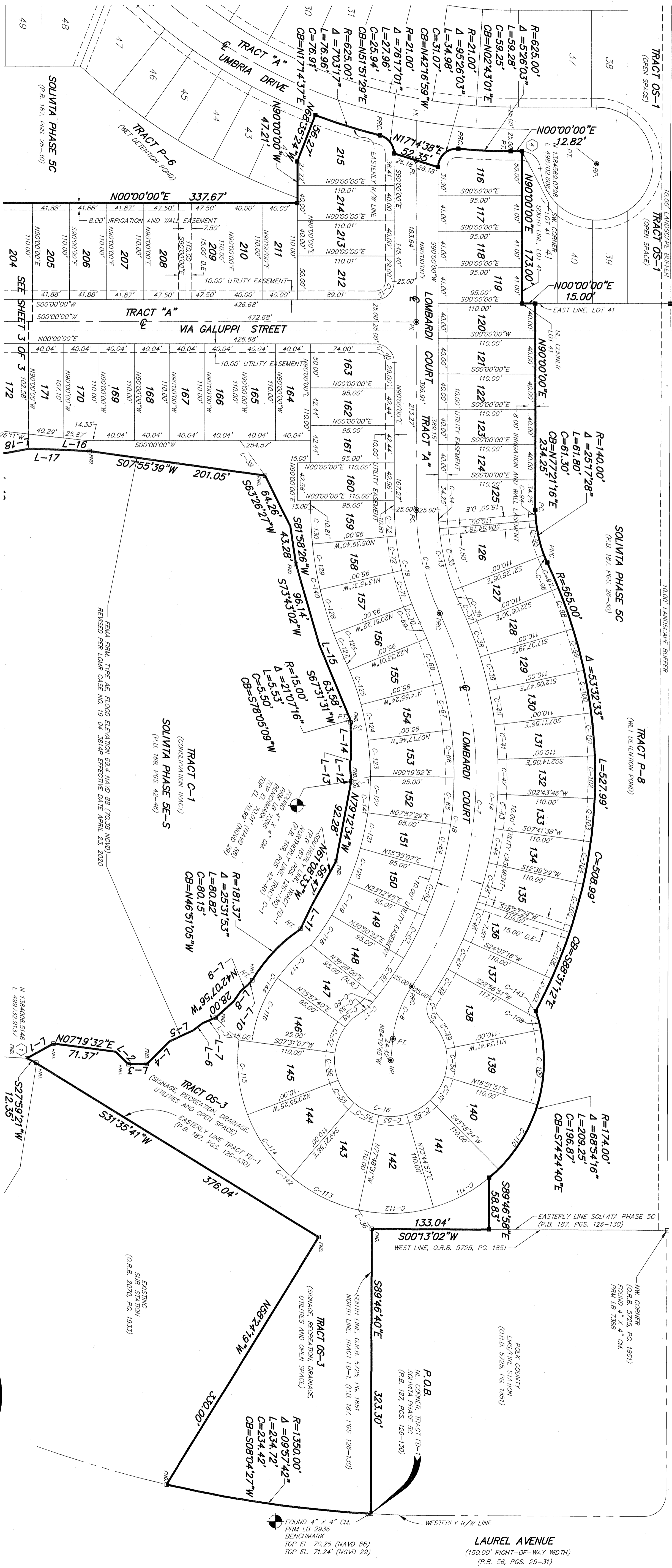
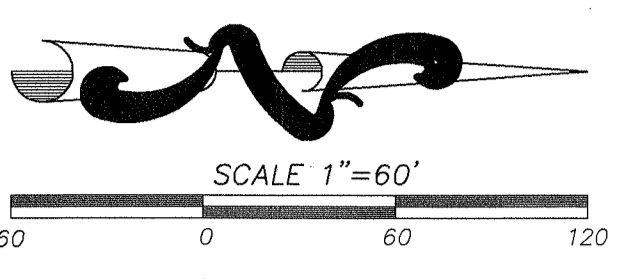


By: *Stephanie May*
 Stephanie May
 Deputy Clerk

SOLITILLA PHASE 5D

A REPLAT
 REPLATING TRACT FD-1, A PORTION OF TRACT P-6 AND A PORTION OF TRACT P-8
 SOLITILLA PHASE 5C, RECORDED IN PLAT BOOK 187, PAGES 26 THROUGH 30
 LYING IN SECTIONS 14, TOWNSHIP 27 SOUTH, RANGE 28 EAST
 POLK COUNTY, FLORIDA

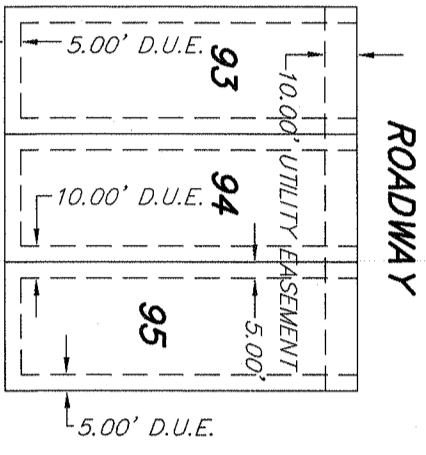
SHEET 2 OF 3 PLAT BOOK 187 PAGE 30



FLOOD HAZARD WARNING:

THIS PROPERTY MAY BE SUBJECT TO FLOODING, EVEN MEETING FEDERAL, STATE OR LOCAL STANDARDS DOES NOT ENSURE THAT ANY IMPROVEMENTS SUCH AS STRUCTURES, DRIVEWAYS, YARDS, SANITARY SEWAGE SYSTEMS, AND WATER SYSTEMS WILL NOT BE FLOODED IN CERTAIN RAIN EVENTS.

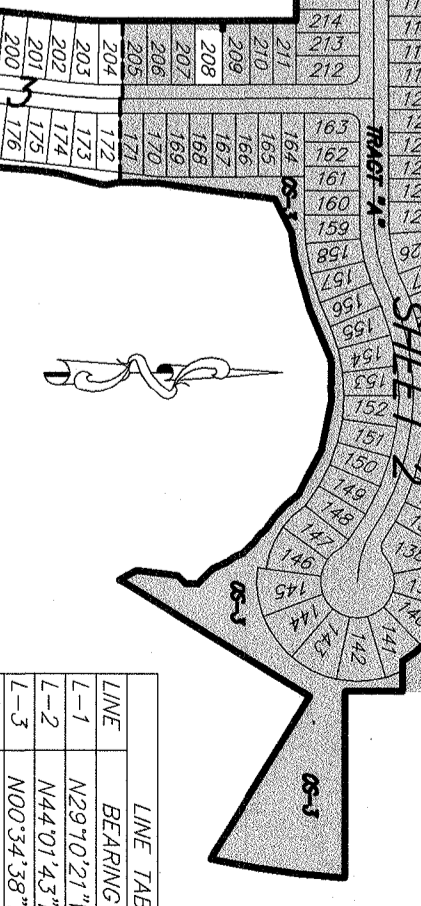
NOTICE:
 THIS PLAT, AS RECORDED IN ITS GRAPHIC FORM, IS THE OFFICIAL DEFINITION OF THE SUBDIVIDED LANDS DESCRIBED HEREIN AND WILL IN NO CIRCUMSTANCES BE SUPPLANTED IN AUTHORITY BY ANY OTHER GRAPHIC OR DIGITAL FORM OF THIS PLAT. THERE MAY BE ADDITIONAL RESTRICTIONS THAT ARE NOT RECORDED ON THIS PLAT THAT MAY BE FOUND IN THE PUBLIC RECORDS OF THIS COUNTY.



CURVE	RADIUS	DELTA	LENGTH	CHORD	CHL. BEARING
C-1	63.00'	72.84°	72.84'	63.00'	N72.84°16'W
C-2	43.00'	59.17°	44.42'	42.42'	N59.17°16'W
C-3	23.00'	45.50°	30.91'	28.91'	N45.50°16'W
C-4	13.00'	31.83°	17.40'	15.40'	N31.83°16'W
C-5	3.00'	8.16°	3.18'	3.18'	N8.16°16'W

CURVE	RADIUS	DELTA	LENGTH	CHORD	CHL. BEARING
C-6	13.00'	31.83°	17.40'	15.40'	N31.83°16'W
C-7	3.00'	8.16°	3.18'	3.18'	N8.16°16'W
C-8	13.00'	31.83°	17.40'	15.40'	N31.83°16'W
C-9	3.00'	8.16°	3.18'	3.18'	N8.16°16'W
C-10	13.00'	31.83°	17.40'	15.40'	N31.83°16'W

CURVE	RADIUS	DELTA	LENGTH	CHORD	CHL. BEARING
C-11	13.00'	31.83°	17.40'	15.40'	N31.83°16'W
C-12	3.00'	8.16°	3.18'	3.18'	N8.16°16'W
C-13	13.00'	31.83°	17.40'	15.40'	N31.83°16'W
C-14	3.00'	8.16°	3.18'	3.18'	N8.16°16'W
C-15	13.00'	31.83°	17.40'	15.40'	N31.83°16'W



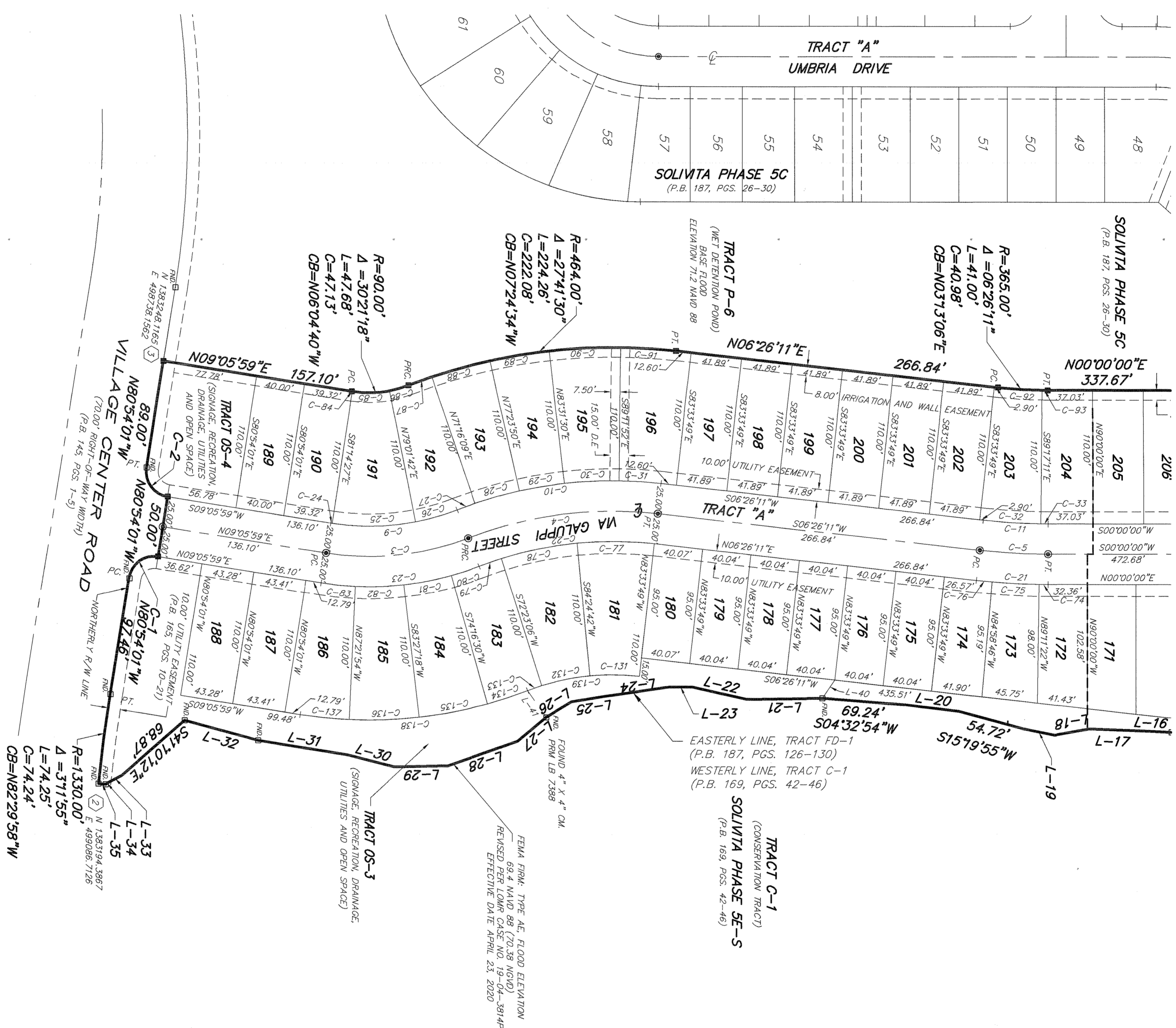
LINE	BEARING	LENGTH
L-1	N63.00°00'W	34.22'
L-2	N43.00°00'W	20.53'
L-3	N23.00°00'W	16.84'
L-4	N03.00°00'W	13.15'
L-5	N83.00°00'W	29.27'

PEC
 SURVEYING AND MAPPING, LLC
 CERTIFICATE OF AUTHORIZATION NUMBER LB 7808
 2100 Alwaye Trail, Suite 203 • Oviedo, Florida 32765 • 407-542-4967

SOLIVITA PHASE 5D

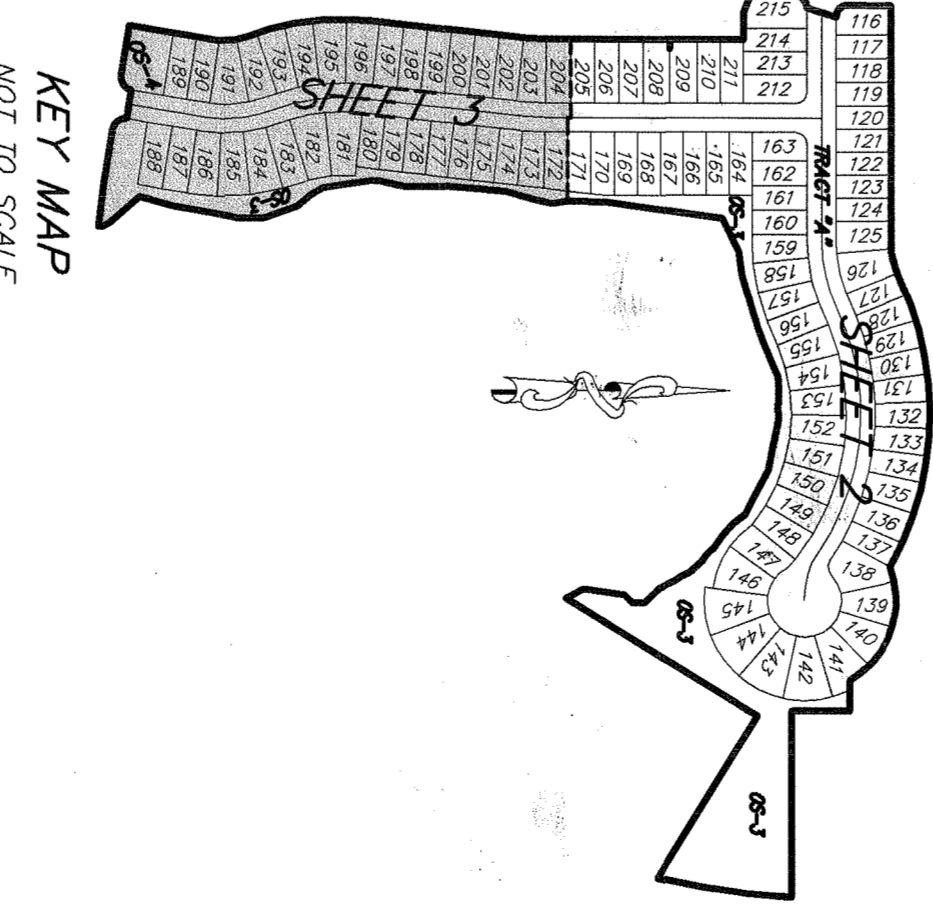
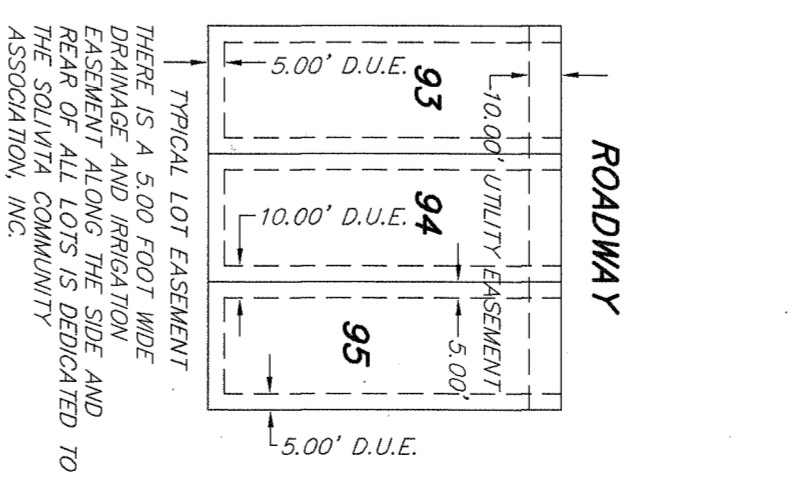
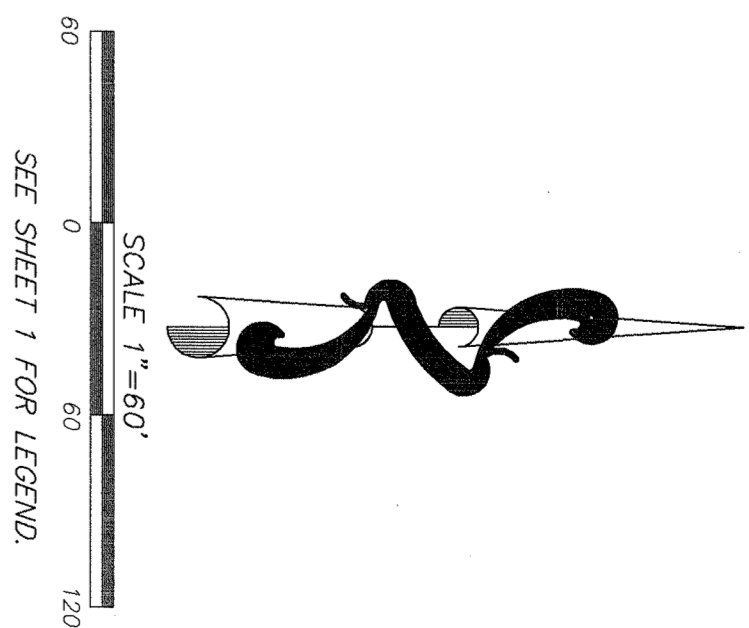
A REPLAT
 REPLATTING TRACT FD-1, A PORTION OF TRACT P-6 AND A PORTION OF TRACT P-8
 SOLIVITA PHASE 5C, RECORDED IN PLAT BOOK 187, PAGES 26 THROUGH 30
 LYING IN SECTIONS 14, TOWNSHIP 27 SOUTH, RANGE 28 EAST
 POLK COUNTY, FLORIDA

SEE SHEET 2 OF 3



LINE	BEARING	LENGTH
L-16	S02°39'32"W	34.50'
L-17	S01°58'56"W	33.00'
L-18	S12°24'55"W	28.20'
L-19	S12°24'55"W	44.72'
L-20	S00°54'55"W	44.72'
L-21	S00°55'05"E	61.88'
L-22	S12°47'43"W	45.42'
L-23	S01°04'45"E	40.92'
L-24	S09°29'43"E	26.31'
L-25	S01°49'31"E	24.51'
L-26	S14°00'32"E	30.76'
L-27	S19°18'21"E	60.74'
L-28	S01°49'31"E	44.12'
L-29	S12°24'55"W	38.39'
L-30	S15°11'11"W	62.25'
L-31	S08°48'45"E	12.40'
L-32	S34°43'09"E	2.87'
L-33	S03°33'59"W	6.00'
L-34	N55°28'17"W	18.17'
L-35	S52°58'10"W	20.84'

CURVE	RADIUS	DELTA	LENGTH	CHORD	CH. BEARING
C-1	21.00'	90°00'00"	32.99'	29.70'	N53°54'01"W
C-2	21.00'	90°00'00"	32.99'	29.70'	S54°05'59"W
C-3	225.00'	30°21'18"	119.20'	112.84'	N08°04'40"W
C-4	225.00'	27°41'30"	109.01'	102.43'	S07°24'34"E
C-5	200.00'	30°21'18"	105.96'	104.42'	N08°04'40"W
C-6	200.00'	27°41'30"	97.10'	90.43'	S07°24'34"E
C-7	425.00'	6°26'11"	53.36'	50.31'	N03°13'05"E
C-8	504.00'	2°14'10"	146.93'	145.60'	S02°24'34"E
C-9	504.00'	30°21'18"	132.45'	125.40'	N08°04'40"W
C-10	504.00'	27°41'30"	120.92'	113.40'	S07°24'34"E
C-11	504.00'	30°21'18"	194.63'	186.87'	S01°06'22"E
C-12	504.00'	27°41'30"	156.00'	148.60'	S19°04'45"E
C-13	504.00'	2°14'10"	37.86'	37.84'	S19°04'45"E
C-14	504.00'	6°26'11"	32.86'	32.84'	S03°24'01"E
C-15	504.00'	5°34'32"	34.81'	34.80'	S03°12'05"W
C-16	425.00'	5°34'32"	47.44'	47.42'	S03°12'05"W
C-17	525.00'	4°12'55"	38.97'	38.97'	N02°24'36"E
C-18	525.00'	3°02'52"	48.95'	48.95'	N02°24'36"E
C-19	504.00'	12°01'39"	63.80'	63.80'	N02°24'36"E
C-20	504.00'	3°28'25"	63.81'	63.80'	N12°28'25"W
C-21	290.00'	9°10'48"	40.06'	40.01'	N12°28'25"W
C-22	290.00'	9°10'48"	40.06'	40.01'	N12°28'25"W
C-23	290.00'	9°10'48"	40.06'	40.01'	N12°28'25"W
C-24	290.00'	9°10'48"	40.06'	40.01'	N12°28'25"W
C-25	290.00'	9°10'48"	40.06'	40.01'	N12°28'25"W
C-26	290.00'	9°10'48"	40.06'	40.01'	N12°28'25"W
C-27	290.00'	9°10'48"	40.06'	40.01'	N12°28'25"W
C-28	290.00'	9°10'48"	40.06'	40.01'	N12°28'25"W
C-29	290.00'	9°10'48"	40.06'	40.01'	N12°28'25"W
C-30	290.00'	9°10'48"	40.06'	40.01'	N12°28'25"W
C-31	290.00'	9°10'48"	40.06'	40.01'	N12°28'25"W
C-32	290.00'	9°10'48"	40.06'	40.01'	N12°28'25"W
C-33	290.00'	9°10'48"	40.06'	40.01'	N12°28'25"W
C-34	290.00'	9°10'48"	40.06'	40.01'	N12°28'25"W
C-35	290.00'	9°10'48"	40.06'	40.01'	N12°28'25"W
C-36	290.00'	9°10'48"	40.06'	40.01'	N12°28'25"W
C-37	290.00'	9°10'48"	40.06'	40.01'	N12°28'25"W
C-38	290.00'	9°10'48"	40.06'	40.01'	N12°28'25"W
C-39	290.00'	9°10'48"	40.06'	40.01'	N12°28'25"W
C-40	290.00'	9°10'48"	40.06'	40.01'	N12°28'25"W



FLOOD HAZARD WARNING:
 THIS PROPERTY MAY BE SUBJECT TO FLOODING, EVEN MEETING FEDERAL, STATE OR LOCAL STANDARDS DOES NOT ENSURE THAT ANY IMPROVEMENTS SUCH AS STRUCTURES, DRIVEWAYS, YARDS, SANITARY SEWAGE SYSTEMS, AND WATER SYSTEMS WILL NOT BE FLOODED IN CERTAIN RAIN EVENTS.

NOTICE:
 THIS PLAT, AS RECORDED IN ITS GRAPHIC FORM, IS THE OFFICIAL DEPICTION OF THE SUBDIVIDED LANDS DESCRIBED HEREIN AND WILL IN NO CIRCUMSTANCES BE SUPPLANTED IN AUTHORITY BY ANY OTHER GRAPHIC OR DIGITAL FORM OF THE PLAT. THERE MAY BE ADDITIONAL RESTRICTIONS THAT ARE NOT RECORDED ON THIS PLAT THAT MAY BE FOUND IN THE PUBLIC RECORDS OF THIS COUNTY.



SURVEYING AND MAPPING, LLC
 CERTIFICATE OF AUTHORIZATION NUMBER LB 7808

2100 Alafaya Trail, Suite 203 • Oviedo, Florida 32765 • 407-542-4967

SEE SHEET 1 FOR LEGEND.