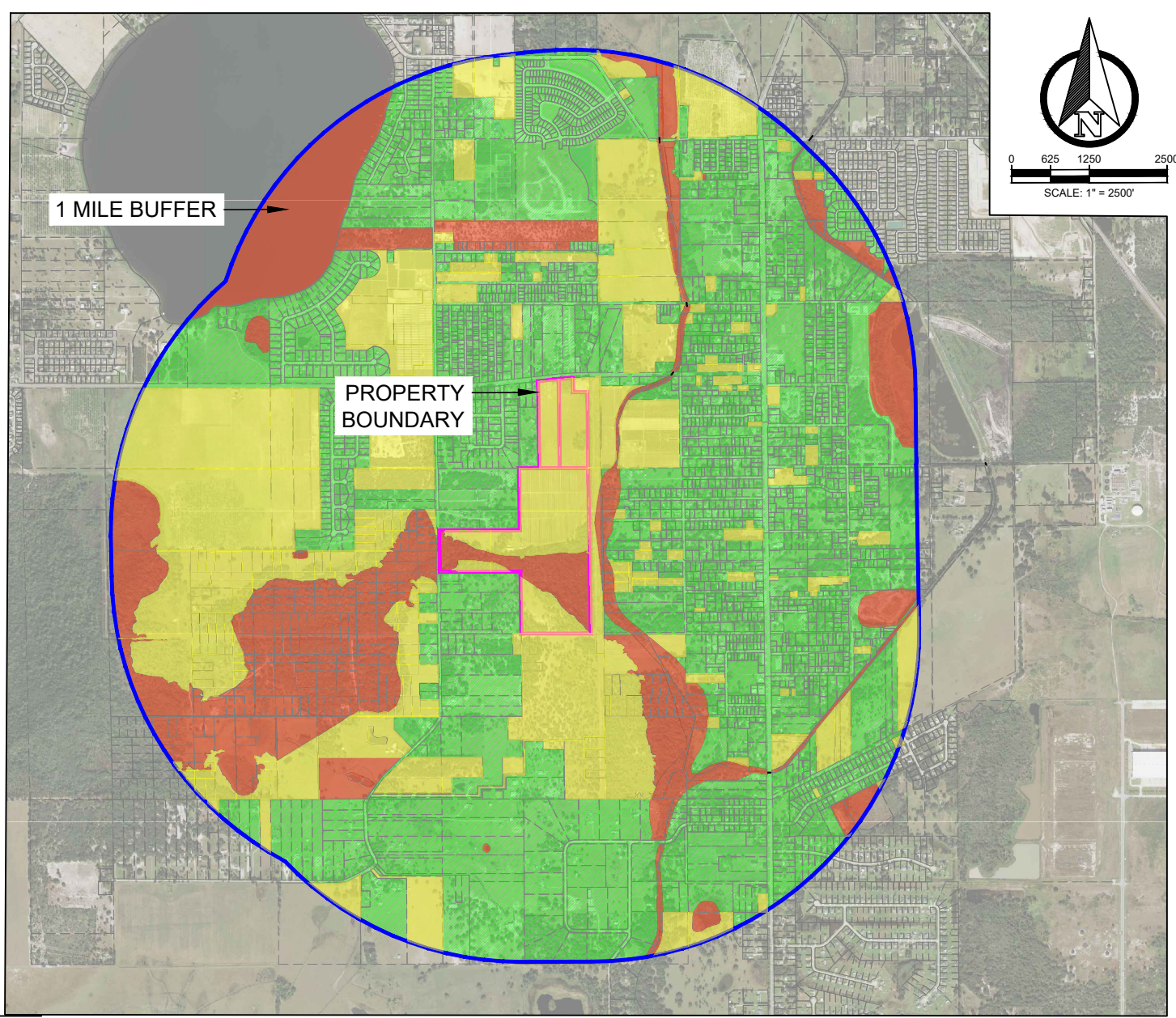







x:\PROJECTS\1158.02 - NEXT LEVEL - BOMBER RD SUB\DRAWINGS\ENGINEERING\SPD\1158.02-SPD EXHIBIT (1 MILE BUFFER).dwg



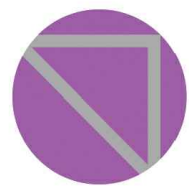
LEGEND

	1 MILE BUFFER	(3,514.0 AC)
	PROPERTY BOUNDARY	
	DEVELOPED AREA	(2,060.0 AC)
	UNDEVELOPED AREA	(906.0 AC)
	UNDEVELOPABLE AREA	(548.0 AC)

CALCULATIONS

SPD CALCULATION FORMULAS:
1) TOTAL AC - TOTAL UNDEVELOPABLE
= DEVELOPABLE AC
2) TOTAL DEVELOPED AC /
TOTAL DEVELOPABLE ACREAGE
X 100% = % DEVELOPED

SPD CALCULATIONS:
1) 3,514.0 AC - 548.0 AC = 2,966.0 AC
2) 2,060.0 AC / 2,966.0 AC X 100% = 69.45%



NEXT LEVEL
PLANNING & PERMITTING

**BOMBER & GERBER DAIRY ROAD
SUBDIVISION**

BOMBER & GERBER DAIRY ROAD
WINTER HAVEN, FL 33880

Developable Area Map